



EUROPEAN COMMISSION  
HEALTH & CONSUMERS DIRECTORATE-GENERAL

Directorate E – Safety of the food chain  
Unit E.3 - Chemicals, contaminants, pesticides

(metazachlor)

SANCO/140/08 – rev. 1

26 September 2008

## FINAL

### Review report for the active substance **metazachlor**

Finalised in the Standing Committee on the Food Chain and Animal Health at its meeting on  
26 September 2008

in view of the inclusion of metazachlor in Annex I of Directive 91/414/EEC

#### 1. Procedure followed for the re-evaluation process

This review report has been established as a result of the re-evaluation of metazachlor, made in the context of the work programme for review of existing active substances provided for in Article 8(2) of Directive 91/414/EEC concerning the placing of plant protection products on the market, with a view to the possible inclusion of this substance in Annex I to the Directive.

Commission Regulation (EC) No 451/2000<sup>(1)</sup> laying down the detailed rules for the implementation of the second and third stages of the programme of work referred to in Article 8(2) of Council Directive 91/414/EEC, as last amended by Regulation (EC) No 1490/2002<sup>(2)</sup>, has laid down the detailed rules on the procedure according to which the re-evaluation has to be carried out. Metazachlor is one of the existing active substances covered by this Regulation.

In accordance with the provisions of Article 4 of Regulation (EC) No 451/2000, BASF and Makhteshim Agan notified to the Commission of their wish to secure the inclusion of the active substance metazachlor in Annex I to the Directive.

In accordance with the provisions of Article 5 of Regulation (EC) No 451/2000, the Commission, designated The United Kingdom as rapporteur Member State to carry out the assessment of metazachlor on the basis of the dossiers submitted by the notifiers. In Regulation (EC) No 1490/2002 the Commission specified furthermore that the deadline for the notifiers with regard to the submission to the rapporteur Member States of the dossiers required under Article 7(2) of Regulation (EC) No 1490/2002, as well as for other parties with regard to further technical and scientific information was 30 November 2003.

---

<sup>1</sup> OJ No L 55, 29.02.2000, p.25.

<sup>2</sup> OJ No L 224, 21.8.2002, p.23. Regulation as last amended by Regulation (EC) No 1095/2007 (OJ L 246, 21.09.2007, p. 19).

BASF and Makteshim Agan submitted by the deadline a dossier to the rapporteur Member State which did not contain substantial data gaps, taking into account the supported uses. Therefore the applicants BASF and Makteshim Agan were considered to be the data submitters.

In accordance with the provisions of Article 10(1) of Regulation (EC) No 1490/2002, United Kingdom submitted on 27 September 2005 to the EFSA the report of their examination, hereafter referred to as the draft assessment report, including, as required, a recommendation concerning the possible inclusion of metazachlor in Annex I to the Directive. Moreover, in accordance with the provisions of Article 10(2) of Regulation (EC) 1490/2002, the Commission and the Member States received also the summary dossier on metazachlor from the notifiers.

In accordance with the provisions of Article 11 of Regulation (EC) No 1490/2002, the EFSA organised the consultation on the draft assessment report by all the Member States as well as by BASF and Makteshim Agan being data submitters, on 3 October 2006 by making it available.

The EFSA organised an intensive consultation of technical experts from a certain number of Member States, to review the draft assessment report and the comments received thereon (peer review).

In accordance with the provisions of Article 11 (4) of Regulation 1490/2002 the EFSA sent to the Commission its conclusion on the risk assessment [Conclusions regarding the peer review of the pesticide risk assessment of the active substance metazachlor (finalised 14 April 2008)<sup>3</sup>]. This conclusion refers to background document A (draft assessment report) and background document B (EFSA peer review report).

In accordance with the provisions of Article 12 of Regulation (EC) No 1490/2002, the Commission referred on 26 September 2008 a draft review report to the Standing Committee on the Food Chain and Animal Health, for final examination. The draft review report was finalised in the meeting of the Standing Committee on 26 September 2008.

The present review report contains the conclusions of the final examination by the Standing Committee. Given the importance of the conclusion of the EFSA, and the comments and clarifications submitted after the conclusion of the EFSA (background document C), these documents are also considered to be part of this review report.

## **2. Purposes of this review report**

This review report, including the background documents and appendices thereto, has been developed and finalised in support of the Directive **2008/116/EC**<sup>4</sup> concerning the inclusion of metazachlor in Annex I to Directive 91/414/EEC, and to assist the Member States in decisions on individual plant protection products containing metazachlor they have to take in accordance with the provisions of that Directive, and in particular the provisions of article 4(1) and the uniform principles laid down in Annex VI.

This review report provides also for the evaluation required under Section A.2.(b) of the above mentioned uniform principles, as well as under several specific sections of part B of these principles. In these sections it is provided that Member States, in evaluating applications and

---

<sup>3</sup> EFSA Scientific Report (2008) n 145p. 1- 141.

<sup>4</sup> Commission Directive 2008/116/EC (OJ L 337, 16.12.2008, p. 86)

granting authorisations, shall take into account the information concerning the active substance in Annex II of the directive, submitted for the purpose of inclusion of the active substance in Annex I, as well as the result of the evaluation of those data.

In accordance with the provisions of Article 13 of Regulation (EC) No 1490/2002, Member States will keep available or make available this review report for consultation by any interested parties or will make it available to them on their specific request.

The information in this review report is, at least partly, based on information which is confidential and/or protected under the provisions of Directive 91/414/EEC. It is therefore recommended that this review report would not be accepted to support any registration outside the context of Directive 91/414/EEC, e.g. in third countries, for which the applicant has not demonstrated to have regulatory access to the information on which this review report is based.

### **3. Overall conclusion in the context of Directive 91/414/EEC**

The overall conclusion from the evaluation is that it may be expected that plant protection products containing metazachlor will fulfil the safety requirements laid down in Article 5(1)(a) and (b) of Directive 91/414/EEC. This conclusion is however subject to compliance with the particular requirements in sections 4, 5, 6 and 7 of this report, as well as to the implementation of the provisions of Article 4(1) and the uniform principles laid down in Annex VI of Directive 91/414/EEC, for each metazachlor containing plant protection product for which Member States will grant or review the authorisation.

Furthermore, these conclusions were reached within the framework of the uses which were proposed and supported by the main data submitter and mentioned in the list of uses supported by available data (attached as Appendix II to this review report).

Extension of the use pattern beyond those described above will require an evaluation at Member State level in order to establish whether the proposed extensions of use can satisfy the requirements of Article 4(1) and of the uniform principles laid down in Annex VI of Directive 91/414/EEC.

The following reference values have been finalised as part of this re-evaluation:

ADI 0.08 mg/Kg bw/day  
ARfD 0.5 mg/Kg bw  
AOEL 0.2 mg/Kg bw/day

With particular regard to residues, the review has established that the residues arising from the proposed uses, consequent on application consistent with good plant protection practice, have no harmful effects on human or animal health. The Theoretical Maximum Daily Intake (TMDI; excluding water and products of animal origin) for a 60 kg adult is < 1% of the Acceptable Daily Intake (ADI), based on the FAO/WHO European Diet (August 1994).

Additional intake from water and products of animal origin are not expected to give rise to intake problems.

Estimates of acute dietary exposure of adults and toddlers revealed that the Acute Reference Dose (ARfD) would not be exceeded (UK NESTI below 0.1% in adult population).

The review has identified several acceptable exposure scenarios for operators, workers and bystanders, which require however to be confirmed for each plant protection product in accordance with the relevant sections of the above mentioned uniform principles.

The review has also concluded that under the proposed and supported conditions of use there are no unacceptable effects on the environment, as provided for in Article 4 (1) (b) (iv) and (v) of Directive 91/414/EEC, provided that certain conditions are taken into account as detailed in section 6 of this report.

#### **4. Identity**

The identity of metazachlor is given in Appendix I.

The active substance shall comply at least with the FAO specification and there seem not to be reasons for deviating from that specification.

The review has established that for the active substance notified the manufacturing impurity toluene is considered to be of toxicological concern and a maximum level of 0.01% is established.

#### **5. Endpoints and related information**

In order to facilitate Member States, in granting or reviewing authorisations, to apply adequately the provisions of Article 4(1) of Directive 91/414/EEC and the uniform principles laid down in Annex VI of that Directive, the most important endpoints were identified during the re-evaluation process. These endpoints are listed in the conclusion of the EFSA, and at section 3 of this report.

#### **6. Particular conditions to be taken into account on short term basis by Member States in relation to the granting of authorisations of plant protection products containing metazachlor**

On the basis of the proposed and supported uses (as listed in Appendix II), the following particular issues have been identified as requiring particular and short term attention from all Member States, in the framework of any authorisations to be granted, varied or withdrawn, as appropriate:

- the operator safety and ensure that conditions of use prescribe the application of adequate personal protective equipment;
- the protection of aquatic organisms;
- the protection of non-target plants
- the protection of the groundwater, when the active substance is applied in regions with vulnerable soil and/or climatic conditions.

Risk mitigation measures should be applied where appropriate.

## **7. List of studies to be generated**

At this stage sufficient information is available on the relevance of certain metabolites. However, a decision on the classification of metazachlor under Directive 67/548/EEC is not yet finalised. Such decision might lead to the need for further information on the metabolites 479M04, 479M08, 479M09, 479M11 and 479M12.

Some endpoints may require the generation or submission of additional studies to be submitted to the Member States in order to ensure authorisations for use under certain conditions. The list of studies to be generated, still ongoing or available but not peer reviewed can be found in the relevant part of the EFSA Scientific report (page 47).

## **8. Information on studies with claimed data protection**

For information of any interested parties, the rapporteur Member State will keep available a document which gives information about the studies for which the main data submitter has claimed data protection and which during the re-evaluation process were considered as essential with a view to annex I inclusion. This information is only given to facilitate the operation of the provisions of Article 13 of Directive 91/414/EEC in the Member States. It is based on the best information available but it does not prejudice any rights or obligations of Member States or operators with regard to its uses in the implementation of the provisions of Article 13 of the Directive 91/414/EEC and neither does it commit the Commission.

## **9. Updating of this review report**

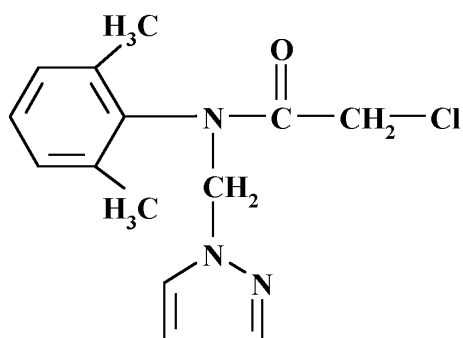
The information in this report may require to be updated from time to time in order to take account of technical and scientific developments as well as of the results of the examination of any information referred to the Commission in the framework of Articles 7, 10 or 11 of Directive 91/414/EEC. Any such adaptation will be finalised in the Standing Committee on the Food Chain and Animal Health, in connection with any amendment of the inclusion conditions for metazachlor in Annex I of the Directive.

## APPENDIX I

## Identity

(METAZACHLOR)

<b>Common name (ISO)</b>	metazachlor
<b>Chemical name (IUPAC)</b>	<i>2-chloro-N-(pyrazol-1-ylmethyl)acet-2',6'-xylidide</i>
<b>Chemical name (CA)</b>	2-chloro-N-(2,6-dimethylphenyl)-N-(1H-pyrazol-1-ylmethyl)acetamide
<b>CIPAC No</b>	411
<b>CAS No</b>	67129-08-2
<b>EEC No</b>	266-583-0
<b>FAO SPECIFICATION</b>	411/TC (1999) min. 940 g/kg
<b>Minimum purity</b>	≥950g/Kg
<b>Identity of relevant impurities (of toxicological, environmental and/or other significance) in the active substance as manufactured (g/kg)</b>	toluene max. 0.01%
<b>Molecular formula</b>	C <sub>14</sub> H <sub>16</sub> Cl N <sub>3</sub> O
<b>Molecular mass</b>	277.8 g/mol
<b>Structural formula</b>	



## APPENDIX II

## List of uses supported by available data

(METAZACHLOR)

## Summary of representative uses evaluated (metazachlor)\*

## BASF

(a)	Member State or Country	Product name	F G or I (b)	Pests or Group of pests controlled (c)	Formulation		Application				Application rate per treatment			PHI (days) (l)	Remarks: (m)
					Type (d-f)	Conc. of as (i)	met hod kind (f-h)	growth stage & season (j)	number min max (k)	interval between applications (min)	kg as/hL min max	water L/ha min max	kg as/ha min max		
Rapeseed, winter, spring	South EU	Butisan S (BAS 479 22H)	F	Annual weeds	SC	500	S P	00-09	1	Not relevant	0.17-0.5	200-600	1.0	Winter -End of January in year of harvest Spring – before 10 <sup>th</sup> true leaf.	Preemergence, waiting period determined by use pattern [1]
Rapeseed, winter-, spring	South EU	Butisan S (BAS 479 22H)	F	Annual weeds	SC	500	S P	10-18	1	Not relevant	0.17-0.5	200-600	1.0	Winter -End of January in year of harvest Spring – before 10 <sup>th</sup> true leaf.	Postemergence, waiting period determined by use pattern [1]
Rapeseed, winter, spring	North EU	Butisan S (BAS 479 22H)	F	Annual weeds	SC	500	S P	00-09	1	Not relevant	0.17-0.5	200-600	1.0	Winter -End of January in year of harvest Spring – before 10 <sup>th</sup> true leaf.	Preemergence, waiting period determined by use pattern [1]
Rapeseed, winter-, spring	North EU	Butisan S (BAS 479 22H)	F	Annual weeds	SC	500	S P	10-18	1	Not relevant	0.17-0.5	200-600	1.0	Winter -End of January in year of harvest Spring – before 10 <sup>th</sup> true leaf.	Posreemergence, waiting period determined by use pattern [1]

**MAK-FSG**

Crop and/or situation  (a)	Member State or Country	Product name	F G or I (b)	Pests or Group of pests controlled  (c)	Formulation		Application				Application rate per treatment			PHI (days)  (l)	Remarks:  (m)
					Type  (d-f)	Conc. of as  (i)	method kind  (f-h)	growth stage & season  (j)	number min max  (k)	interval between applications (min)	kg as/hL  min max	water L/ha  min max	kg as/ha  min max		
Winter rape	GE	FUEGO	F	Grass weeds, particularly annual meadow grass, and broadleaved weeds	SC	500 g/l	Spraying	early post-emergence (BBCH 10-13)	1	not relevant	0.25	300	0.75	F	not stated [1]
<i>Northern White Cedar</i> ( <i>Thuja occidentalis</i> ), <i>Rhododendron</i> ( <i>Rhododendron</i> spp.),  <i>Privet</i> ( <i>Ligustrum</i> spp.)  <i>Lilac</i> ( <i>Syringa</i> spp.),  <i>Alder</i> ( <i>Alnus glutinosa</i> ),  <i>Grey Willow</i> ( <i>Salix cinerea</i> ),  <i>Sea-buckthorn</i> ( <i>Hippophae rhamnoides</i> ),  <i>Norway spruce</i> ( <i>Picea abies</i> )	GE	FUEGO	F	Grass weeds, particularly annual meadow grass, and broadleaved weeds	SC	500 g/l	Spraying	early post-emergence of the weeds (BBCH 11-12)	1	Not relevant	0.25	300	0.75	na	The available risk assessment not cover intended uses applied for with only one application every three years. [1]