



# **Evaluation of the EU Legislative Framework in the Field of GM Food and Feed**

## **Presentation to Stakeholders**

17 July 2009

**Agra CEAS Consulting Ltd.**

**Food Chain Evaluation Consortium (FCEC)**

(Agra CEAS Consulting - Arcadia International - Bureau van Dijk - Civic Consulting)

# Presentation structure

- Study team and focus
- Legislative frameworks pre and post-2003
- Current intervention logic
- Evolution of the GM sector
- Consumer perceptions
- Evaluation questions and issues
- Information and data sources
- Evaluation process and timetable
- Request for assistance

# Team

FCEC Consortium consists of four partners:

- **Agra CEAS Consulting (GM evaluation leader)**
- Arcadia International
- Bureau van Dijk
- CIVIC Consulting (Consortium manager)

# Study focus

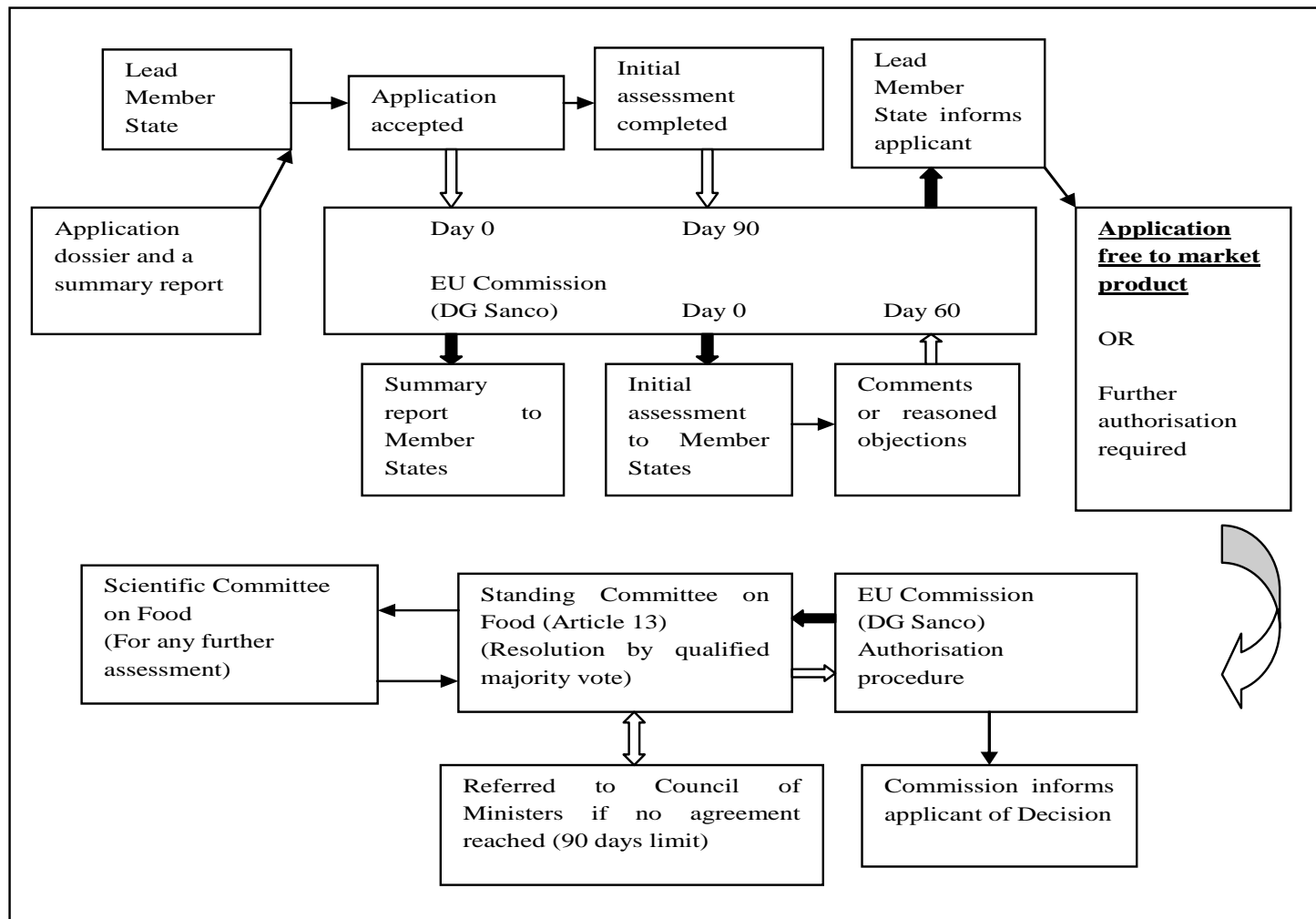
## **Analysis of the EU legislative framework on GM feed and food:**

1. The risk assessment and regulatory approval process, including:
  - Measures taken to streamline the risk assessment procedure
  - Treatment of stacked events
  - Role of safeguard measures
  - Asynchronous authorisations
  - The operation of harmonised control measures
2. The compulsory labelling of GM food and feed

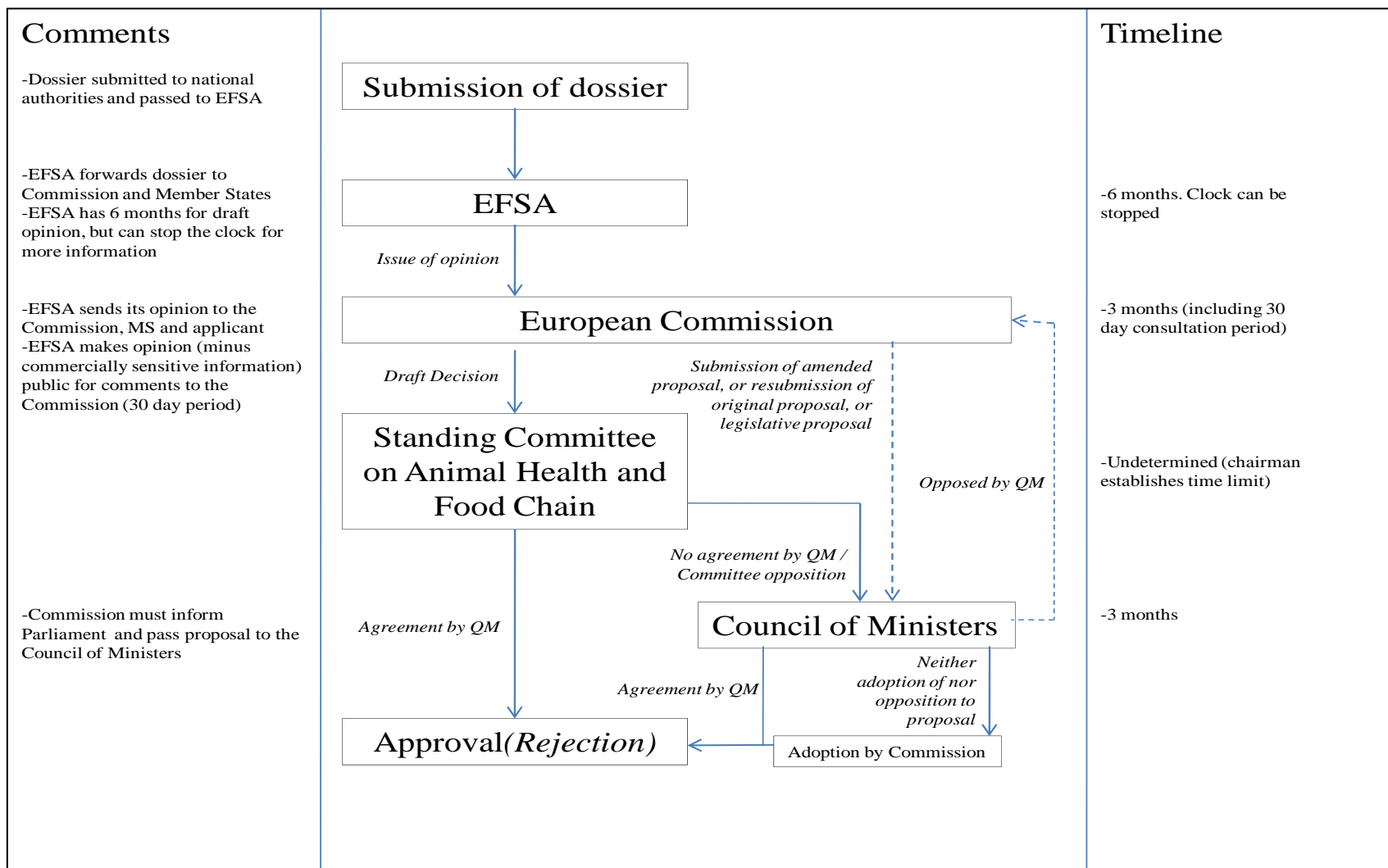
## **Outside the remit of the study:**

- Cultivation (separate DG ENV study)

# Legislative framework pre-2003



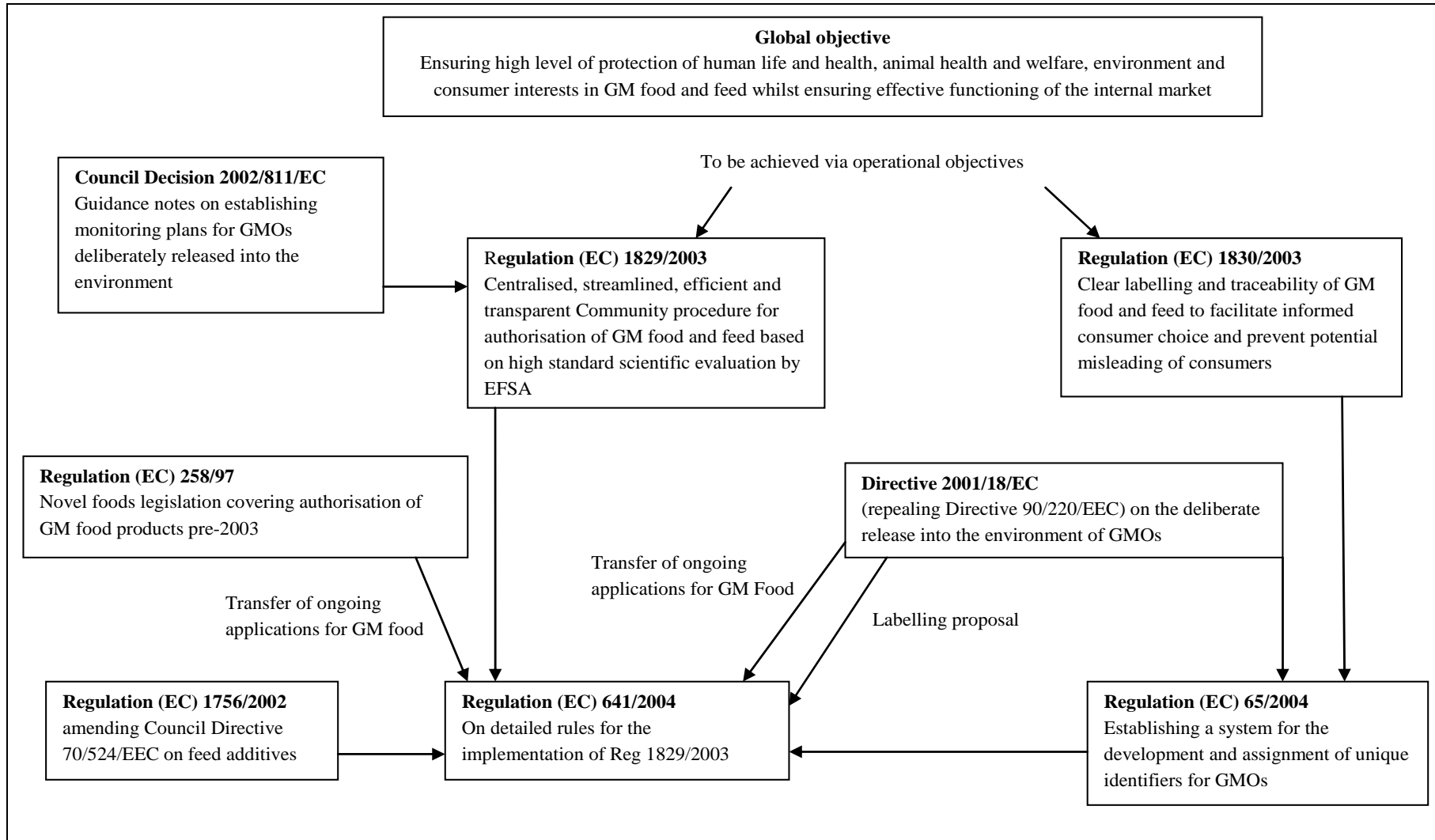
# Legislative framework post-2003



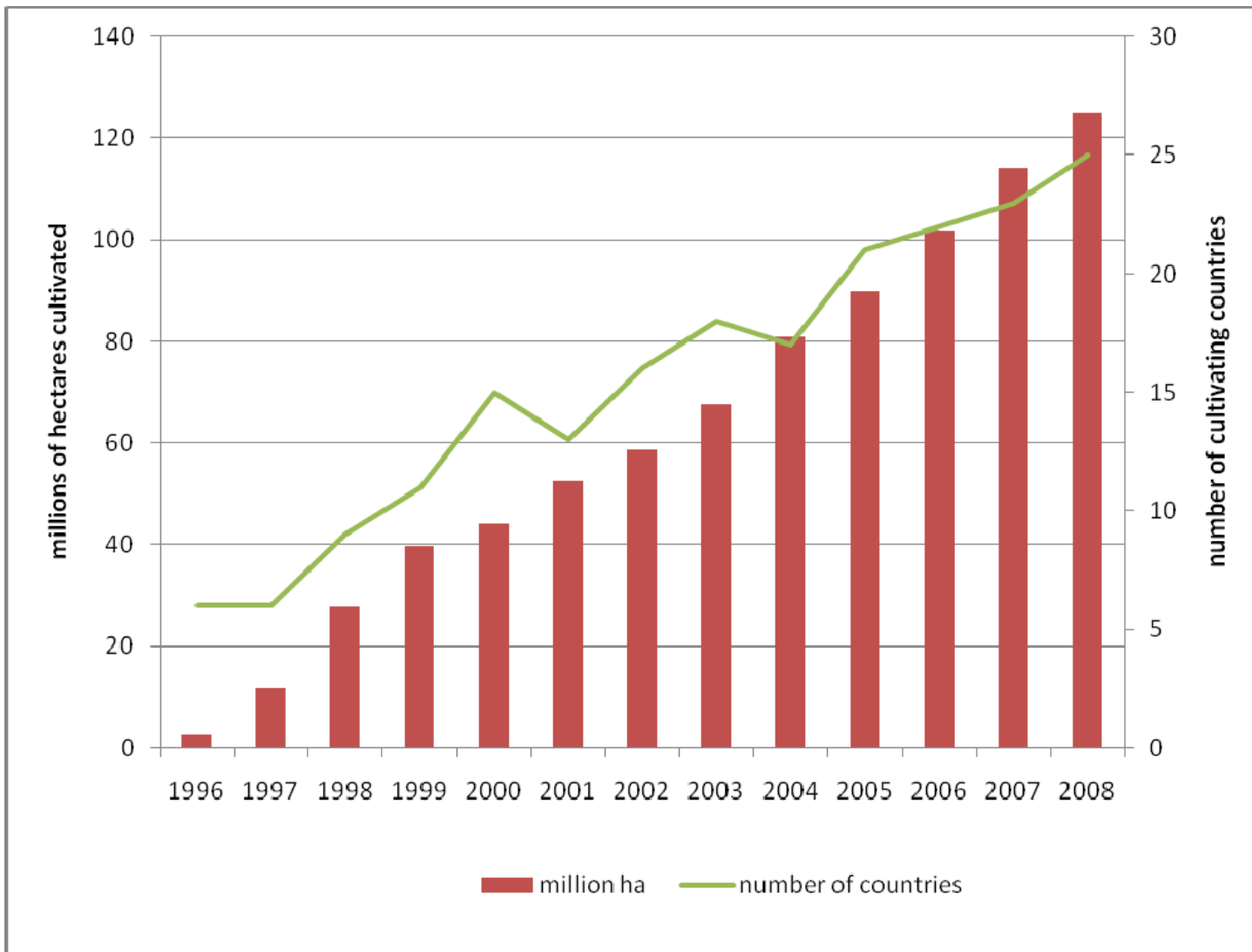
# Main legislative changes

- **GM food and feed in a single regulatory framework:**
  - Reg. 1829/2003 and Reg. 1830/2003 cover all food and feed.
- **A single scientific evaluation undertaken by EFSA:**
  - Previously completed by a Member State Competent Authority.
- **A centralised Community procedure for the authorisation of GM food and feed:**
  - Previously partially centralised.
- **New, consistent labelling requirements.**
  - Tolerance threshold of 0.9%.
- **Transitional measures for adventitious and technically unavoidable presence of GM material:**
  - Expired April 2007.

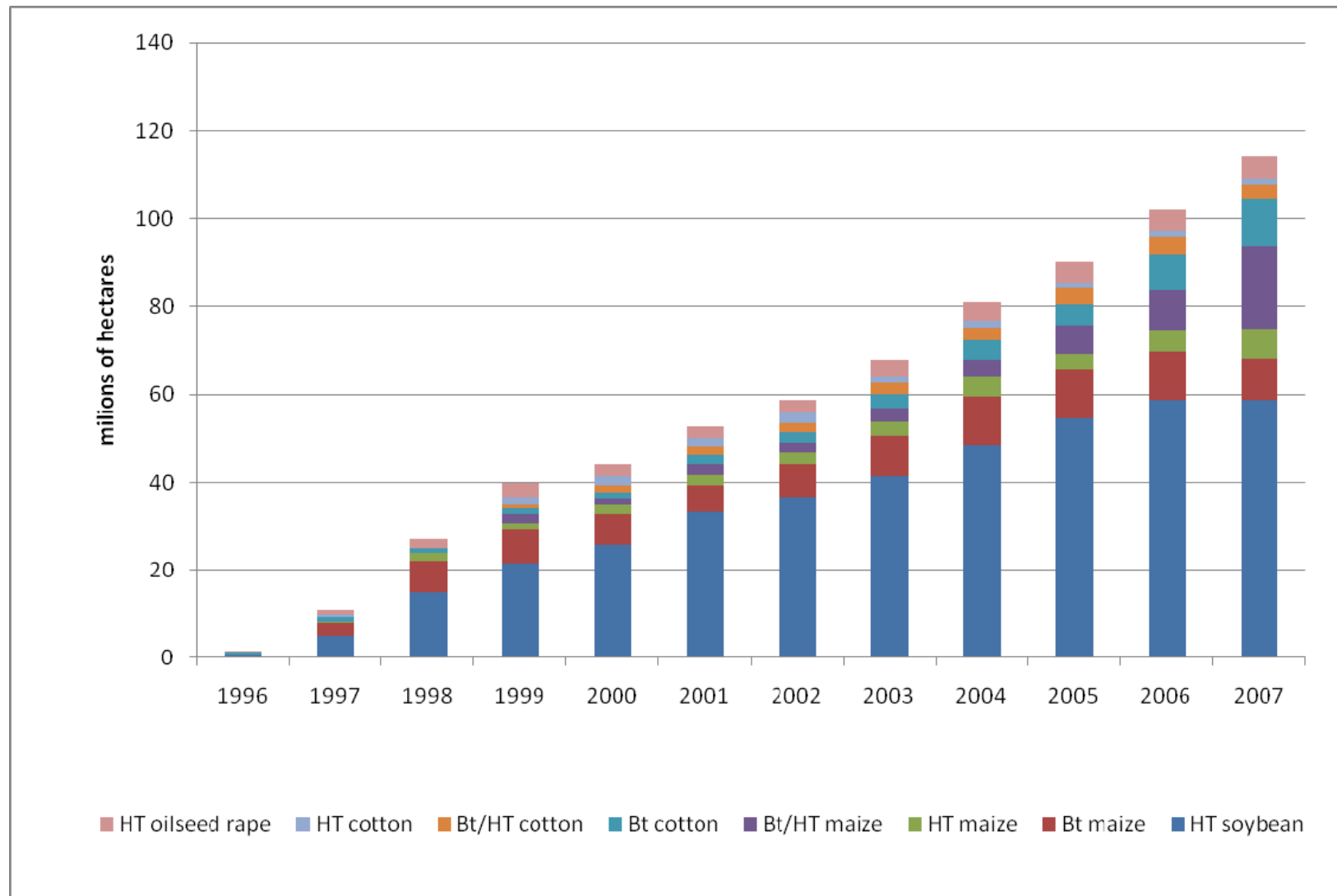
## Intervention logic



# Global evolution of the GM sector



# Global evolution of the GM sector



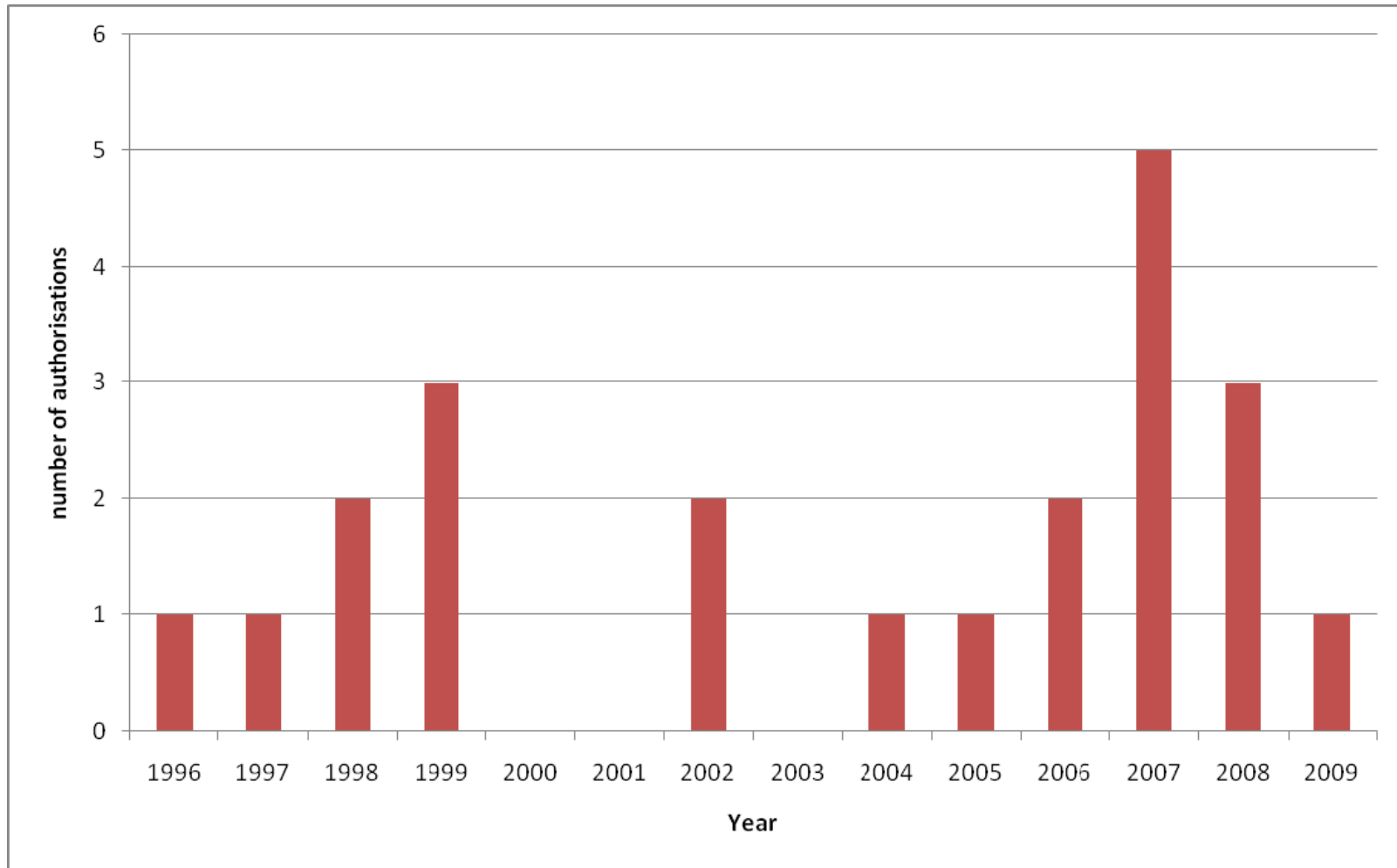
# EU evolution of the GM sector

## EU authorisations by crop

	HT	<i>Bt</i>	HT/ <i>Bt</i>	<b>Total</b>
Canola/oilseed rape	3			<b>3</b>
Cotton	2	2	2	<b>6</b>
Maize	3	3	6	<b>12</b>
Soybean	3			<b>3</b>
Sugar beet	1			<b>1</b>
<b>Total</b>	<b>12</b>	<b>5</b>	<b>8</b>	<b>25</b>

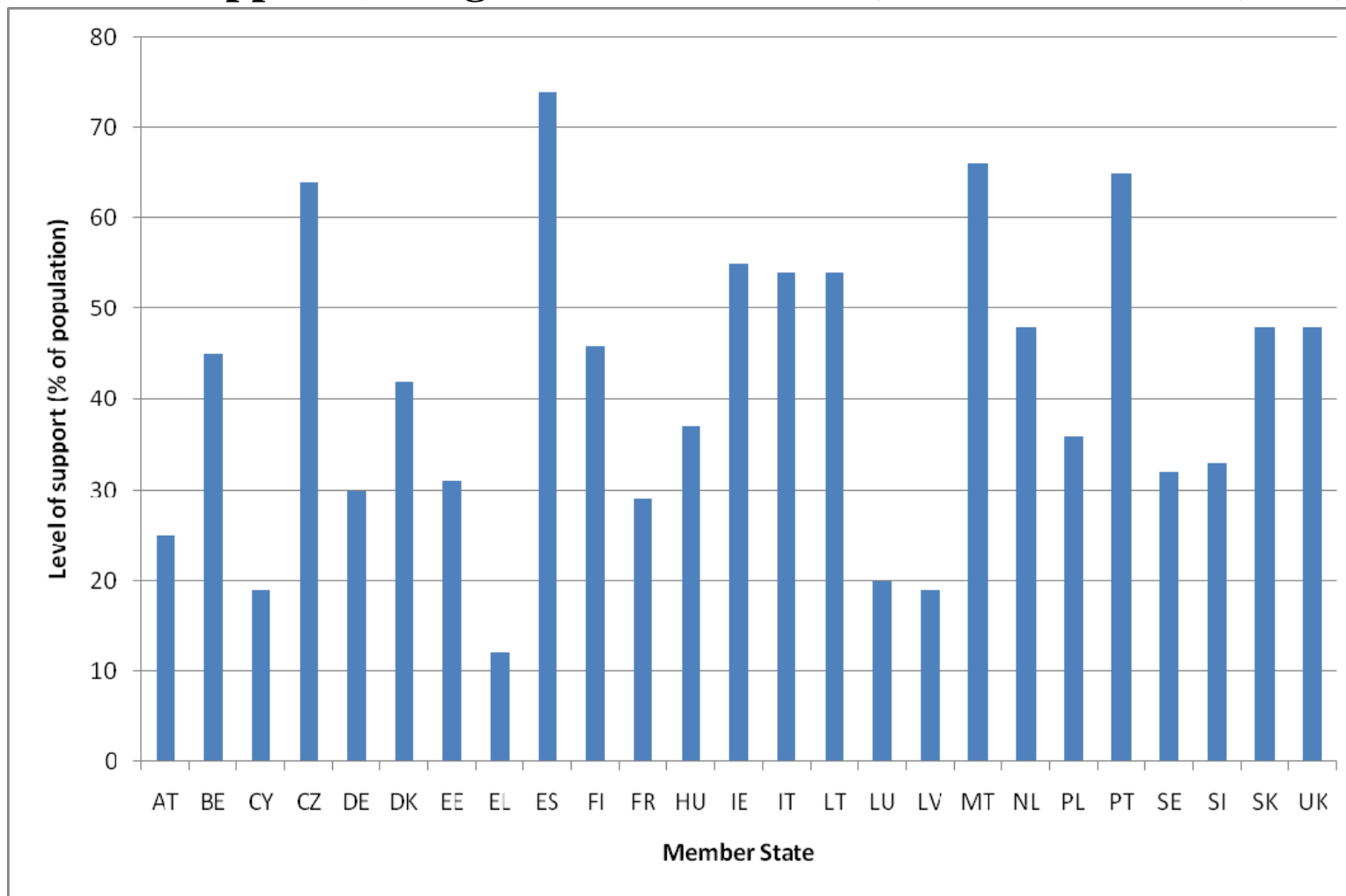
# EU evolution of the GM sector

## EU authorisations by year



# Consumer perceptions of GMs

## Level of support (outright and risk tolerant) for GMs EU-25 (2005)



# Evaluation Questions (EQs)

- **Overall legislative objectives and sector developments (EQs 1-2):**
  - Legislative objectives
  - Realisation of objectives
  - Future developments
  - Ability to capture potential benefits from future developments
- **Issues:**
  - Increasing use of stacked events
  - Second/third generation GM events
  - Rationale behind Member State voting patterns

# Evaluation Questions (EQs)

- **Risk assessment and regulatory approval process (EQs 3-7)**
  - Effectiveness
  - Approach to stacked events
  - Efficiency
  - Impact of legislation
  - Emergency measures
  - Asynchronous authorisations
- **Issues:**
  - Rationale for regulatory approach to stacked events
  - Impact of an end to “mirror” policy
  - Difference between legislation and implementation

# Evaluation Questions (EQs)

- **The compulsory labelling of GM food and feed (EQs 8-12)**
  - Providing informed consumer choice
  - Consumer acceptance
  - Impact of labelling rules
  - Extent of labelling
  - Consequences of extension of scope
  - GM-free schemes
- **Issues:**
  - Difficulty obtaining consumer opinions
  - Little information on GM food

# Evaluation Questions (EQs)

- **Acceptance (EQ 13)**
  - Reasons for controversy
  - Impact/cost of risk aversion
  - Attitudes to risk and uncertainty
  - Improving trust in science-based risk assessment in GM context
- **Issues:**
  - Difficulty obtaining public opinion
  - General public understanding and interpretation of science in general and risk in particular

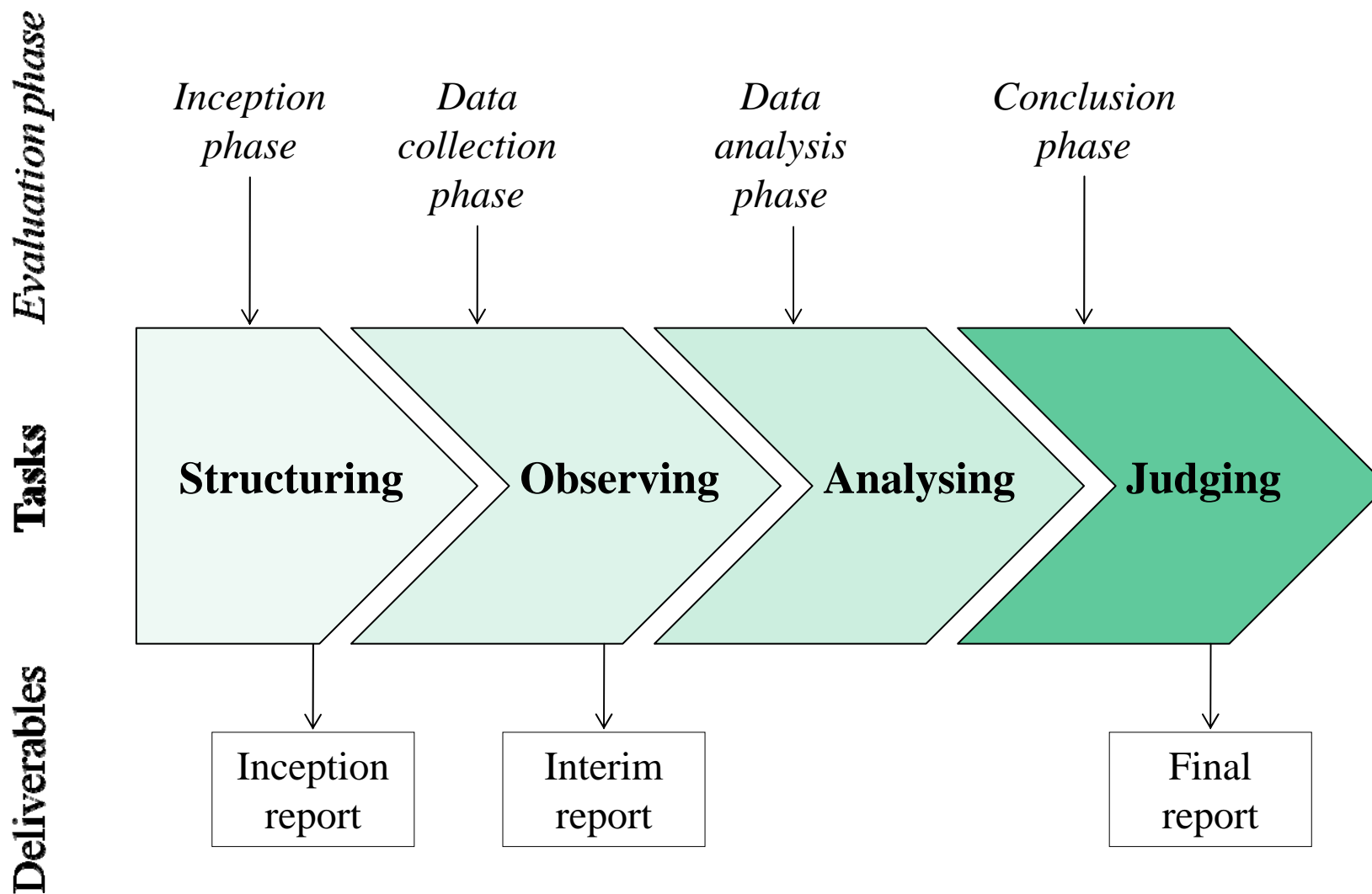
# Evaluation Questions (EQs)

- **Conclusions and recommendations (EQ 14)**
  - Evidence-based conclusions and recommendations
  - Options for the future
  - Relevance, social, environmental and economic impact of options
- **Issues:**
  - Difficult to draw conclusions from what are likely to be divergent views
  - Likely to be divergent views on the impact of options

# Information sources

- **Identified literature:**
  - E.g. JRC, OECD, Eurobarometer, LEI, DG Agri, etc.
- **Exploratory interviews conducted:**
  - With a sample of stakeholders
- **Competent Authority survey**
- **Stakeholder survey**
- **Further stakeholder interviews:**
  - Technology providers, users, trade, processors, retail, consumer organisations, NGOs
- **Case studies (provisional):**
  - Imports, labelling, feed and livestock, consumers, authorisation

# Evaluation process



# Timeline and key milestones

Months:	1	2	3	4	5	6	7	8	9	10	11	12
Activities:	2009							2010				
	Jun	Jul	Aug	Sep	Oct	Nov	Dec	Jan	Feb	Mar	Apr	May
<i>Kick off meeting (w/c 1/06)</i>	■											
Methodology refinement/validation; first round of interviews	■	■										
<b><i>Inception Report</i></b>												
<i>Inception meeting (6 weeks after project start)</i>												
<i>Attendance at the advisory forum for the food chain meeting</i>												
<i>Attendance at the SCFCAH meeting</i>												
Main phase: launch surveys, interviews and case studies			■	■	■	■						
<b><i>Interim Report (progress report)</i></b>												
<i>Interim meeting (6 months after project start)</i>												
<i>Attendance at stakeholder conference</i>												
Main phase: conclude survey and case studies; analysis							■	■	■			
Draft Final Report (final results and analysis)										■	■	
<i>Final meeting (10 months after project start)</i>											■	
Draft Final Report revision + other Deliverables												■
Final Report (approval)												■

# Request for assistance

- **Data sources/documents**
- **Stakeholder contact details:**
  - Technology providers, users, trade, processors, retail, consumer organisations and NGOs
  - Approximately 20 key contacts required in each Member State for the stakeholder survey (national membership would be a good start)
  - Up to 50 key contacts required at the EU level for the stakeholder survey and more in-depth follow up interviews
- **Case studies:**
  - When finalised we would value views on which Member States should be used for which thematic case studies
  - Specific contact details within selected Member States