



MINISTERIO
DE MEDIO AMBIENTE
Y MEDIO RURAL Y MARINO

Spanish National Eradication Programme on Sheep and Goat Brucellosis 2009.

Results and evolution.



National eradication program 2009

- Main measures:
 1. Routine testing with compulsory slaughter and compensation
 2. With or without vaccination (Rev-1)
 3. Regionalitation of measures (increased measures in high prevalence areas, more frequent testing)

Regions with PREVALENCE 0

- To keep herd prevalence in 0 and to gain officially free status on at least 99,8% of herds
- Stamping out
- Vaccination forbidden

Regions of low prevalence ($<2,5\%$)

- To achieve eradication levels in 2 years
- Vaccination forbidden in UVLs M4 or M3, not if risk situations or to complete the minimum period of vaccination. Stamping out.

In the rest of UVLs , vaccination of young animals (rev-1 conjunctival), except in herds M4 or M3 gaining status M4



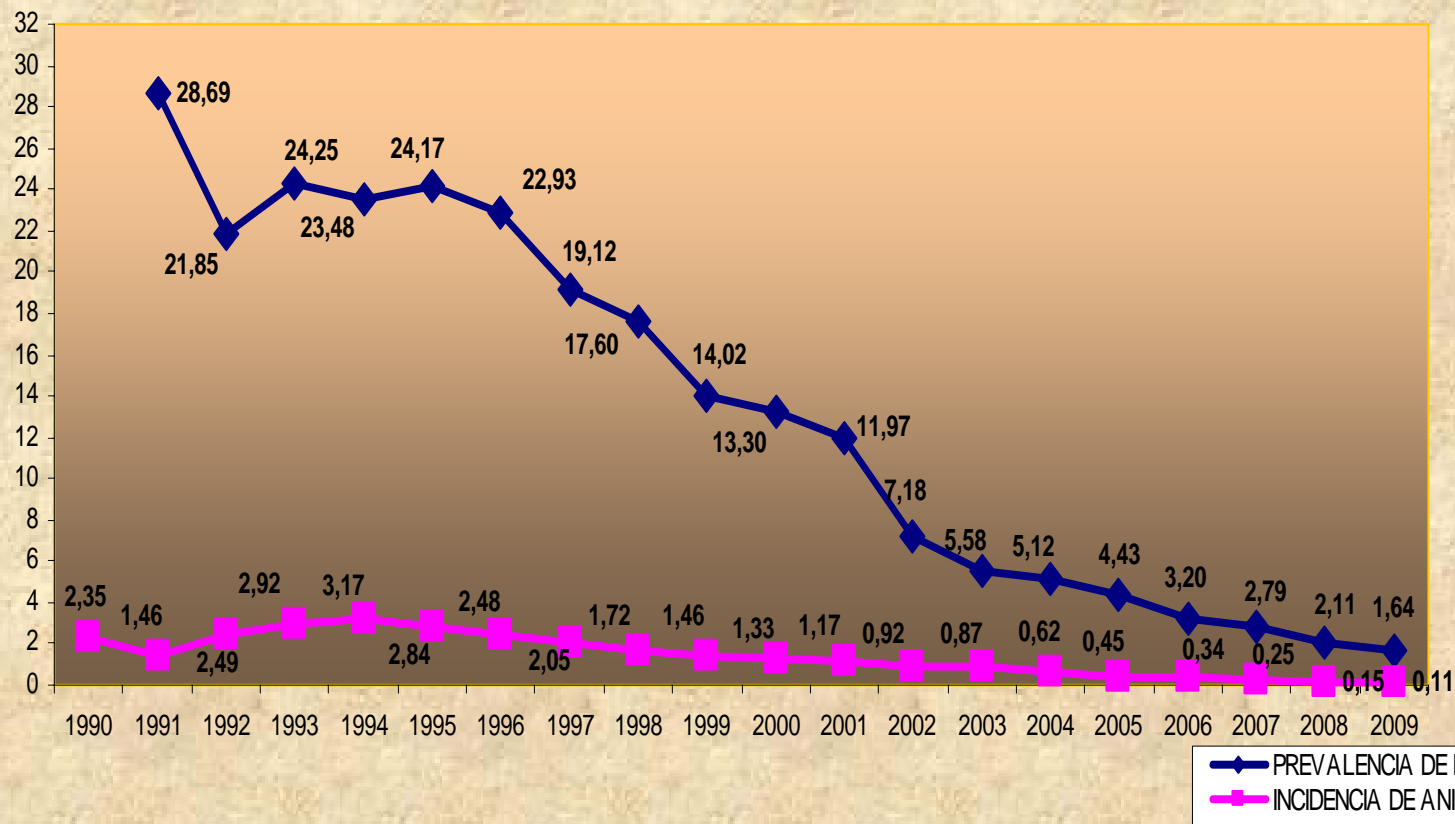
Regions with high prevalence ($> 2.5\%$)

- To achieve eradication levels in 3 years

vaccination of young animals (rev-1 conjunctival), except in herds M4 or M3 gaining status M4 under certain conditions



PREVALENCIA DE REBAÑO E INCIDENCIA EN ANIMALES 1990-2009 BRUCELOSIS OVINA Y CAPRINA

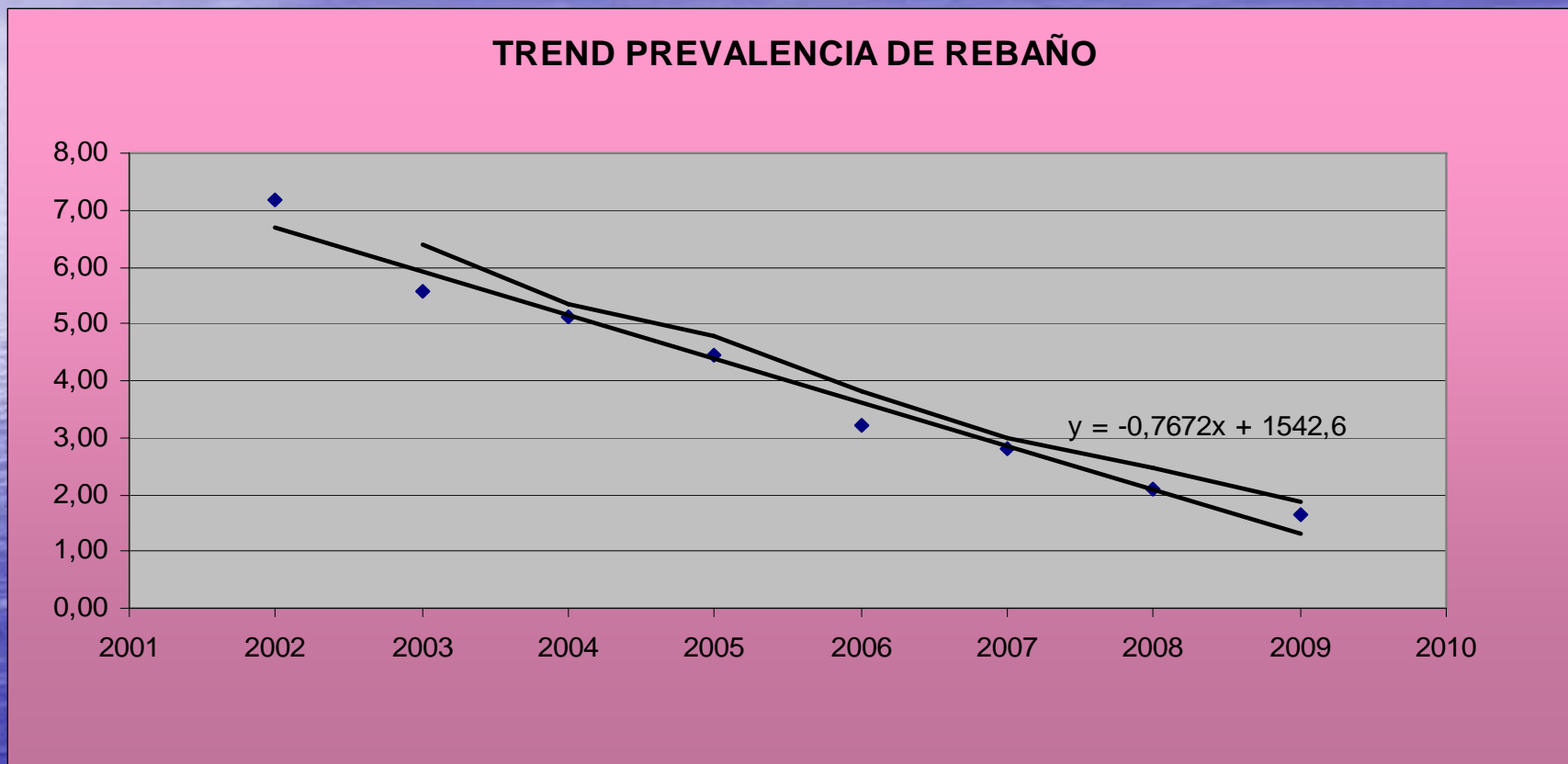




EVOLUCIÓN DE LA PREVALENCIA DE REBAÑO (EN %)

CCAA	EVOLUCIÓN DE LA PREVALENCIA DE REBAÑO (EN %)								
	2001	2002	2003	2004	2005	2006	2007	2008	2009
ANDALUCÍA	27,11	21,62	12,72	12,97	13,76	11,56	10,39	8,55	7,95
ARAGÓN	32,30	15,14	11,83	5,97	4,18	1,59	1,52	0,70	0,38
ASTURIAS	0,16	0,05	0,01	0,00	0,00	0,00	0,00	0,00	0,00
BALEARES	0,20	0,00	0,00	0,00	0,00	0,00	0,00	0,00	0,00
CANARIAS	0,00	0,00	0,00	0,00	0,00	0,00	0,00	0,00	0,00
CANTABRIA	3,71	2,63	1,90	1,05	0,55	0,49	1,39	0,78	0,18
CASTILLA LA MANCHA	8,93	7,96	6,58	7,52	6,09	3,55	2,10	2,11	1,97
CASTILLA Y LEÓN	15,28	9,60	6,95	6,37	3,72	1,97	1,80	1,51	0,35
CATALUÑA	27,15	19,09	20,69	17,51	14,06	9,53	5,44	3,14	1,55
EXTREMADURA	5,60	4,34	3,07	3,68	3,18	2,22	1,84	0,95	0,66
GALICIA	0,29	0,18	0,08	0,03	0,04	0,01	0,01	0,00	0,00
LA RIOJA	6,73	9,42	10,00	8,50	2,54	1,11	1,61	0,70	0,70
MADRID	15,03	5,10	7,89	5,60	4,69	6,44	3,42	4,01	2,82
MURCIA	18,22	0,14	8,02	6,15	4,71	3,96	8,70	7,00	4,99
NAVARRA	1,08	1,30	0,40	0,13	0,09	0,00	0,00	0,00	0,00
PAÍS VASCO	0,09	0,42	0,44	0,31	0,08	0,12	0,00	0,15	0,04
VALENCIA	39,48	26,44	22,35	15,42	15,13	8,10	3,74	5,72	2,60
TOTAL	11,97	7,18	5,58	5,12	4,43	3,20	2,79	2,11	1,63

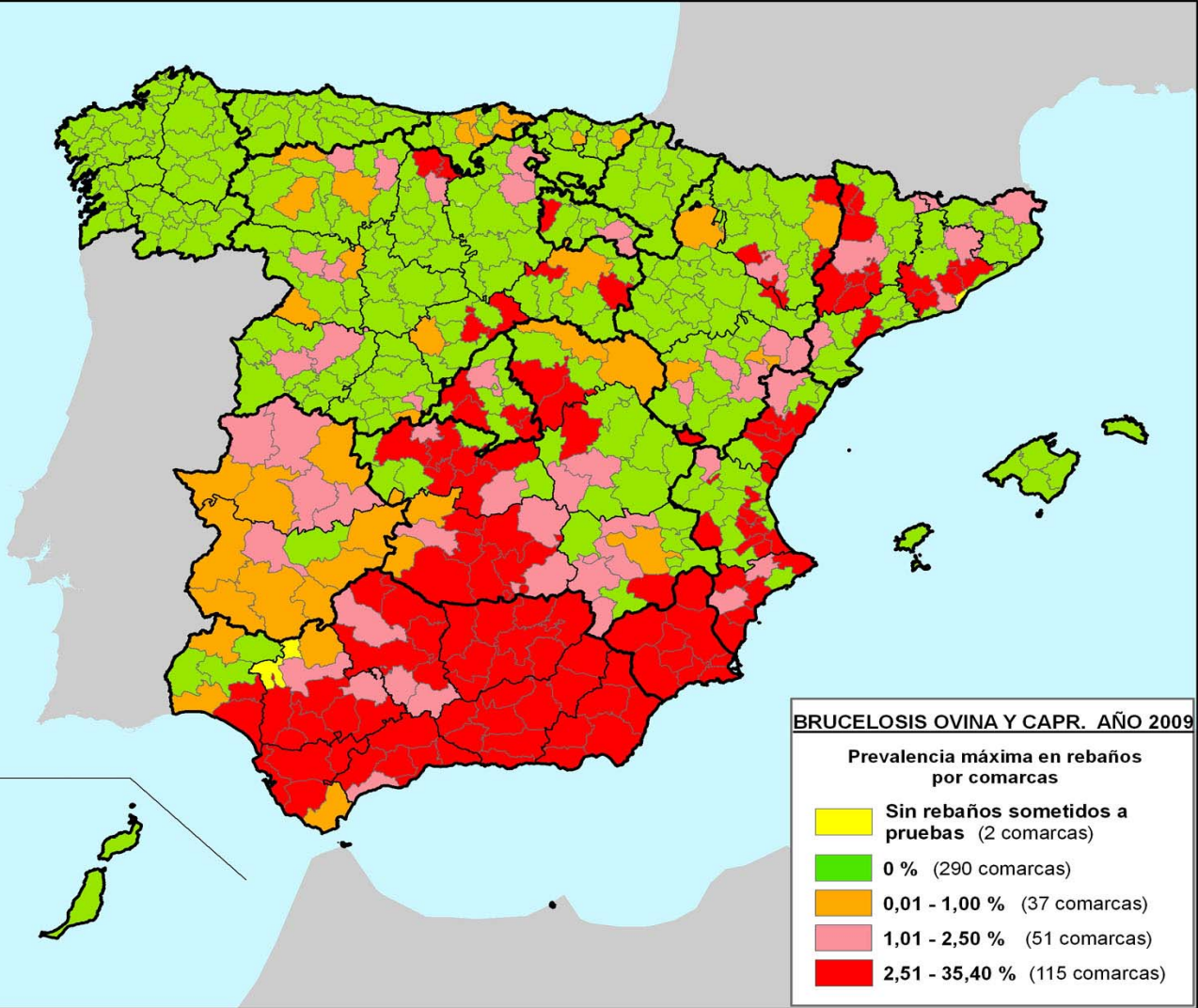
TREND ANALYSIS



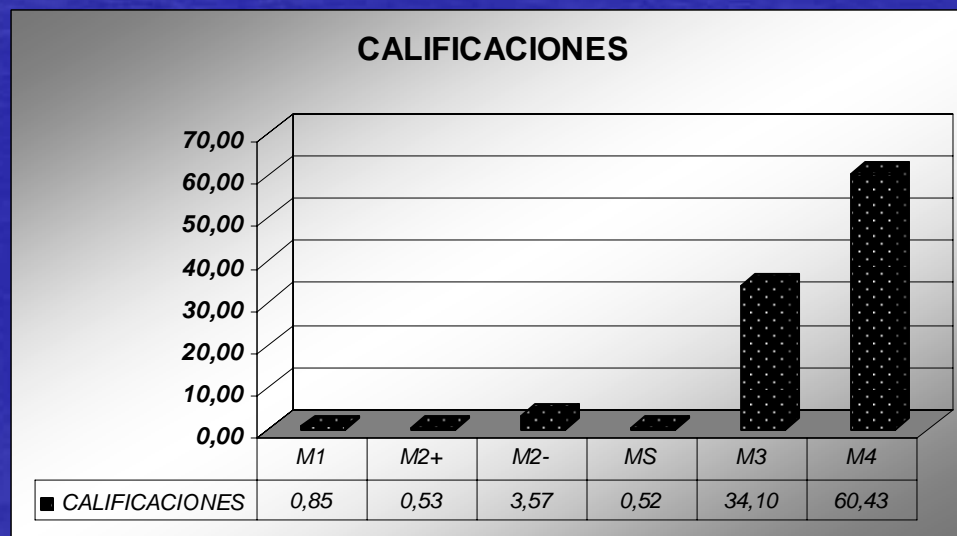
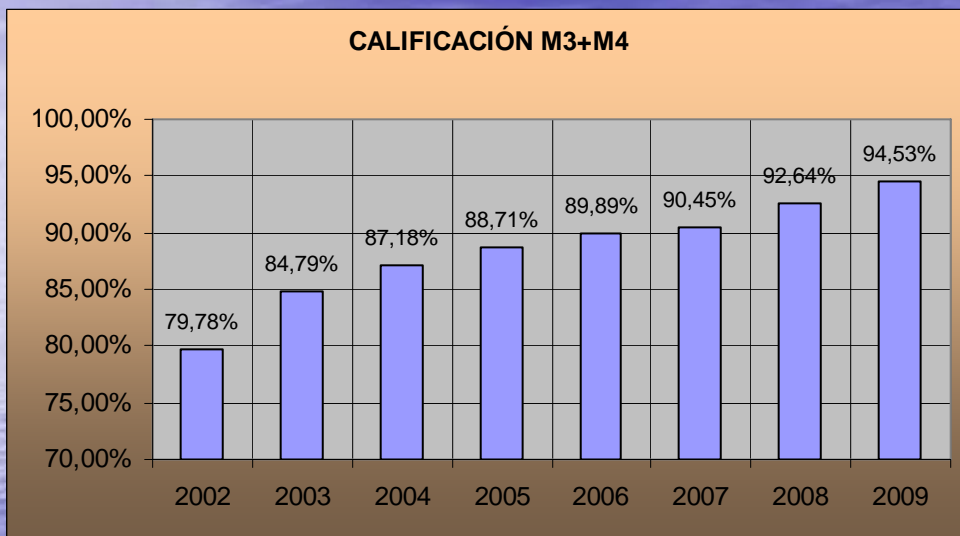
Trend analysis: decreasing trend sinificative all the years ($p < 0,01$)

Yearly relative decrease: 21,34% (95%CI: -23,98;-18,61)

HERD PREVALENCE BY LVU's



Herd status



Conclusions

- Favourable evolution of the epidemiological indicators, following the trends of previous years

Thank you

