

# **Bovine Brucellosis the United Kingdom (Northern Ireland) 2009**

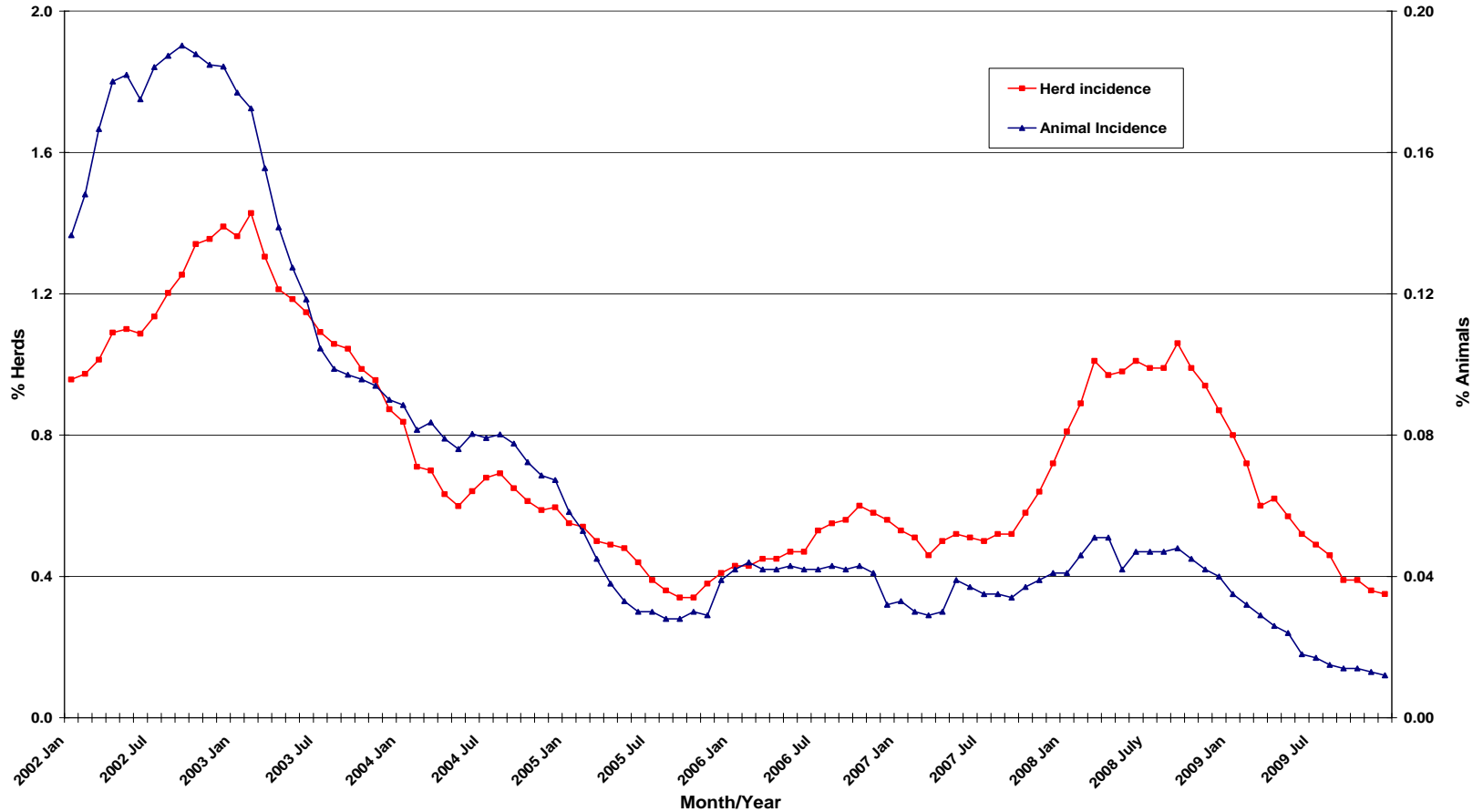
**SCoFCAH 1-2 June 2010**

# Current Control Measures

- **Brucellosis Control Initiative** – an implementation task force with dedicated staff
- **Brucellosis audits of field offices by HQ staff**
- **Publicity Campaign** – posters, press articles, etc. emphasis on abortion reporting
- **Staff training and Private Vet meetings;**
- **Bulk Milk Elisa testing applied to all dairy herds**
- **Abattoir surveillance for females over 30 months**
- **i-Elisa introduced in risk herds**
- **Annual testing in all DVO's**
- **Pre-movement testing for all eligible cattle over 12 months**
- **Cattle identification inspections for herds experiencing a breakdown.**
- **Tracing and purchase of the progeny of reactors**
- **Removal of low CFT animals**
- **Enhanced restrictions on contiguous herds**
- **Temporary Control Areas with increased controls**
- **Management database designed to facilitate local management of outbreaks**
- **Modifications to valuation procedure to reduce potential for over-compensation**
- **Slurry treatment with lime in breakdown herds to kill the bacterium**

# BR Herd and Animal Incidence (2002-2009)

BR Herd and Animal Incidence  
(12 month moving average: January 2002 to December 2009)



# UK (NI): test and Disease Statistics: 2004-2009

Year	No. cattle tested	No. serological tests	Animal Incidence	Herd Incidence
2004	860653	1244900	0.067	0.60
2005	911790	1255842	0.039	0.41
2006	928500	1302518	0.032	0.56
2007	911394	1260709	0.041	0.72
2008	908811	1322883	0.040	0.87
2009	888898	1222323	0.012	0.35

Confirmed Herd Incidence	%
2005	0.15
2006	0.28
2007	0.25
2008	0.16
2009	0.05

## Data on infection 2008

<b>Species</b>	<b>Number of new herds infected</b>	<b>Number of positive animals</b>
<b>Bovine</b>	<b>177~</b>	<b>366#</b>

**36 herds had infection confirmed by culture**

~ serological reactor in herd where no reactor animal identified in previous 12 months  
# seropositive animals

## Data on infection 2009

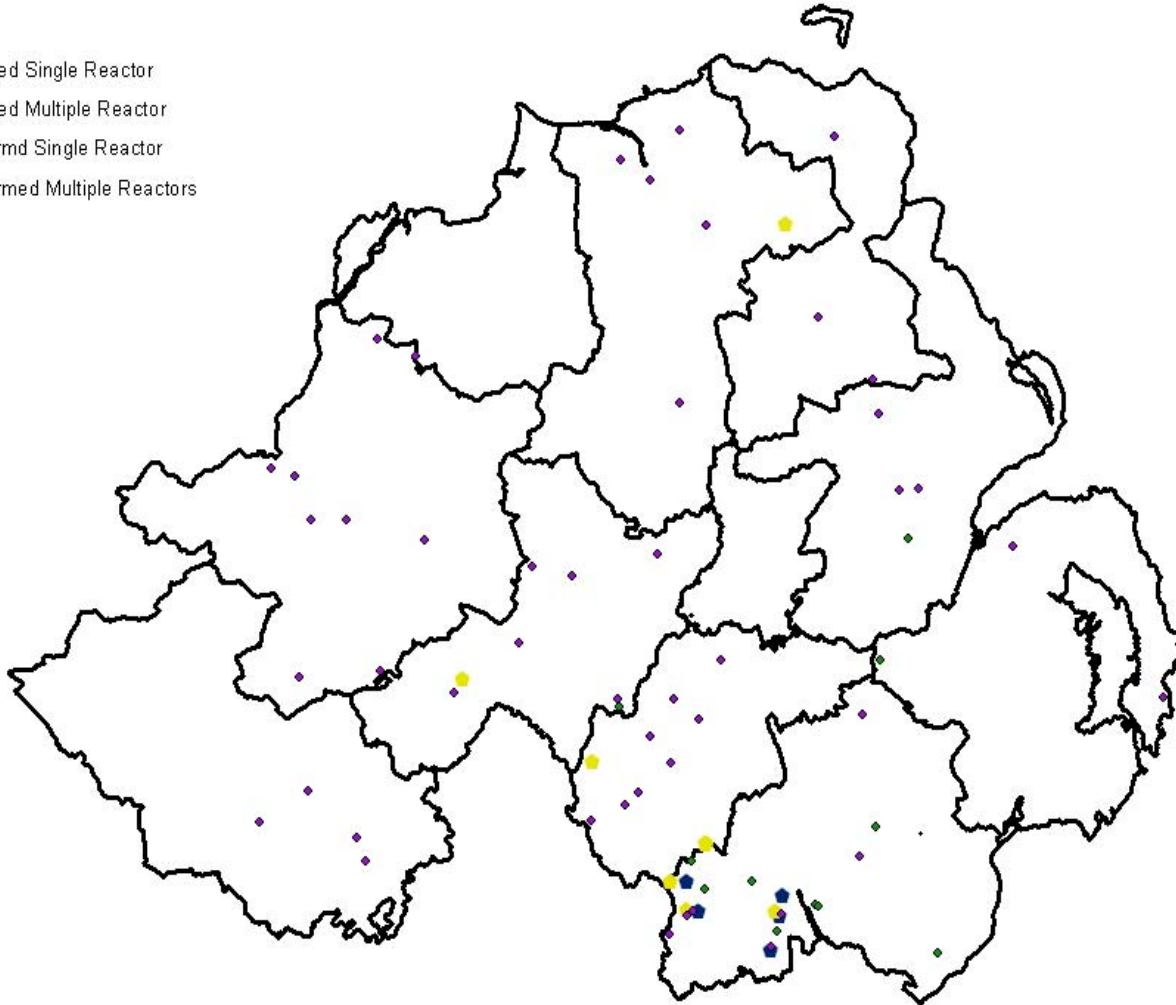
<b>Species</b>	<b>Number of new herds infected</b>	<b>Number of positive animals</b>
<b>Bovine</b>	<b>71~</b>	<b>116#</b>

**12 herds had infection confirmed by culture**

~ serological reactor in herd where no reactor animal identified in previous 12 months  
# seropositive animals

# BR Herd Breakdowns 2009

- Confirmed Single Reactor
- Confirmed Multiple Reactor
- Unconfirmed Single Reactor
- Unconfirmed Multiple Reactors



# Conclusions

- More focused and intensive efforts since 2007 have resulted in significant improvements in herd incidence, animal incidence and confirmed incidence of the disease.
- Reduction in disease levels in the areas that have historically seen a higher incidence is very encouraging.
- However, we are not complacent as experience has taught us that brucellosis hotspots can develop with risk of considerable spread.
- We are encouraged by the industry's united condemnation of what appeared to be an incident of deliberate infection in late December 2009.
- We are, with input from industry stakeholders, preparing statutory Brucellosis Biosecurity Guidance which, if not followed, can allow a reduction or withholding of compensation.