



DGV
Direcção Geral
de Veterinária

Ministério da Agricultura,
do Desenvolvimento Rural e das Pescas

Bluetongue

Update situation in Portugal



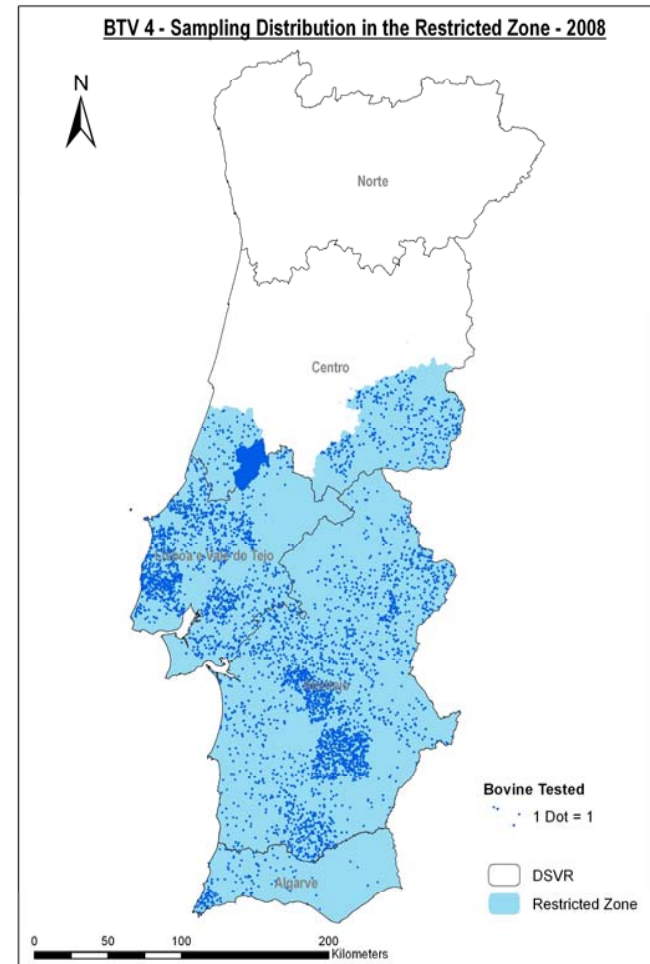
SCOFCAH – 12 January 2010

Epidemiological situation BTV4

- No evidence of viral circulation since **March 2008**
- End of BTV4 vaccination in **December 2008**

Portugal presented a cross sectional study to the European Commission in January 2009, to sustain the demonstration of absence of the disease

Portugal expects to declare freedom from BTV4 infection in 2010 (indemnity status)



BTV - 1

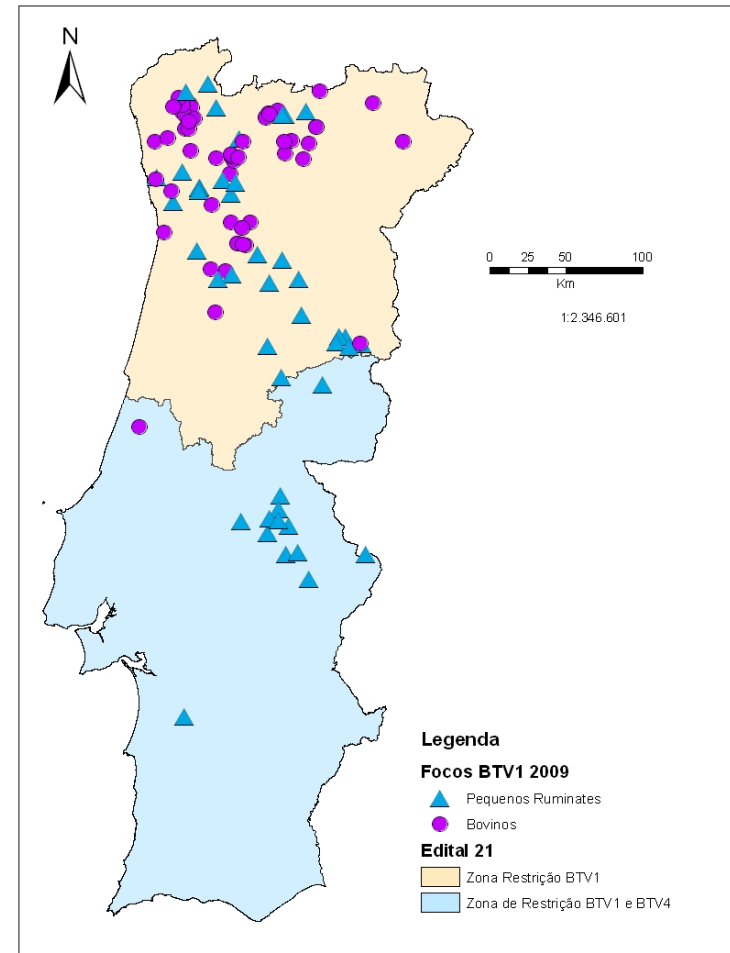
2009

- ◆ Evidence of viral circulation

129 BTV1 outbreaks

71 in North Region
36 in Center Region
22 in Alentejo Region

- ◆ Start of vector seasonally free period :
15 December 2009 (Edit 24)



BTV – 1

Sheep Vaccination

2009 Campaign *

Region (DSVR)	N° vaccinated sheep	N° vaccinated holdings	N° sheep (census)	N° holdings (census)	% vaccinated sheep	% vaccinated holdings
N	251.394	11.322	355.056	13.964	70,80%	81,08%
C	465.151	18.294	574.963	28.292	80,90%	64,66%
LVT	157.062	6.206	218.731	7.774	71,81%	79,83%
ALT	889.816	7.148	1.166.874	9.115	76,26%	78,42%
ALG	49.837	925	49.974	956	99,73%	96,76%
TOTAL	1.813.260	43.895	2.365.598	60.101	76,65%	73,04%

Source: PISANET (includes annual revaccination)

* data until 11 January 2010

BTV1

2009 Cattle Vaccination *

Region (DSVR)	N° vaccinated cattle
N	4.744
C	6.322
LVT	2.904
ALT	82.829
ALG	917
TOTAL	97.716

Mandatory vaccination for all cattle aged 3 to 8 months, born in 2009 and destined to reproductive or production movement

Source: PISANET

** data until 11 January 2010*

BTV8 vaccination

- ❑ Vaccination on a voluntary base, according to Regulation 123/2009 from 10 February, started in 30th March 2009.
- ❑ Preventive vaccination in restricted zones without virus circulation
- ❑ BTV 8 Vaccin supplied free of charges to OPP by DGV.
- ❑ OPP veterinarians apply the vaccin.
- ❑ Vaccination is mandatory for intra-communitary trade without delay period.

DSVR	Nº cattle vaccinated	Nº sheep vaccinated
Norte	59.097	30.918
Centro	1.073	0
Lisboa Vale Tejo	1.553	0
Alentejo	46.868	27.740
Algarve	0	0
Total	108.591	58.658

Source: PISANET – data until 11 January 2010

Specific surveillance programme in slaughterhouses

Purpose:

- ❑ Demonstrate absence of BTV4 and BTV8 viral circulation
- ❑ Monitorize BTV1 viral circulation

Implementation:

- ❑ One day per month, in all national slaughterhouses, collection of blood samples in cattle (*started March 2009*).



Permits detection prevalence 2% with 95% confidence

Specific surveillance programme in slaughterhouses

Results*:

6.427 bovine samples



173 BTV1 positive results

116 North Region

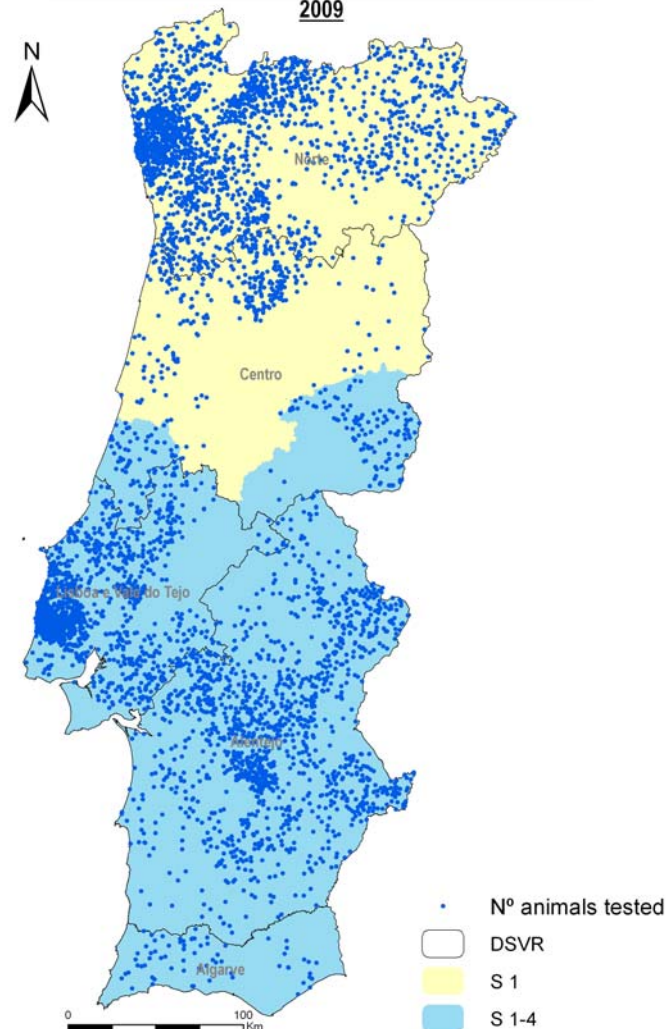
27 Center Region

13 Lisboa e Vale do Tejo Region

17 Alentejo Region

**Data collected until 30 December 2009*

BLUETONGUE
VIROLOGICAL SURVEILLANCE IN SLAUGHTERHOUSES
2009



Collaboration between
all entities



Early detection
Surveillance



Vaccination



Disease control

BTV4

4 vaccination campaigns



Absence of **BTV4** in 2008

BTV1

2nd year of vaccination



Absence of **BTV1** em 2011

Thank you for your attention