



**National Sanitary Veterinary and Food
Safety Authority**



**Implementation of monitoring,
control and eradication program
of Classical Swine Fever in
Romania in 2009**

4-5 February 2010,
SCFCAH, Brussels



Country Status – annual reports OIE

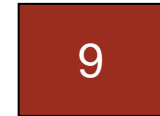
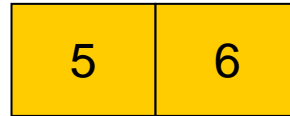
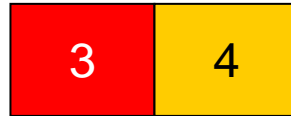
2005


2006


2007


2008

2009



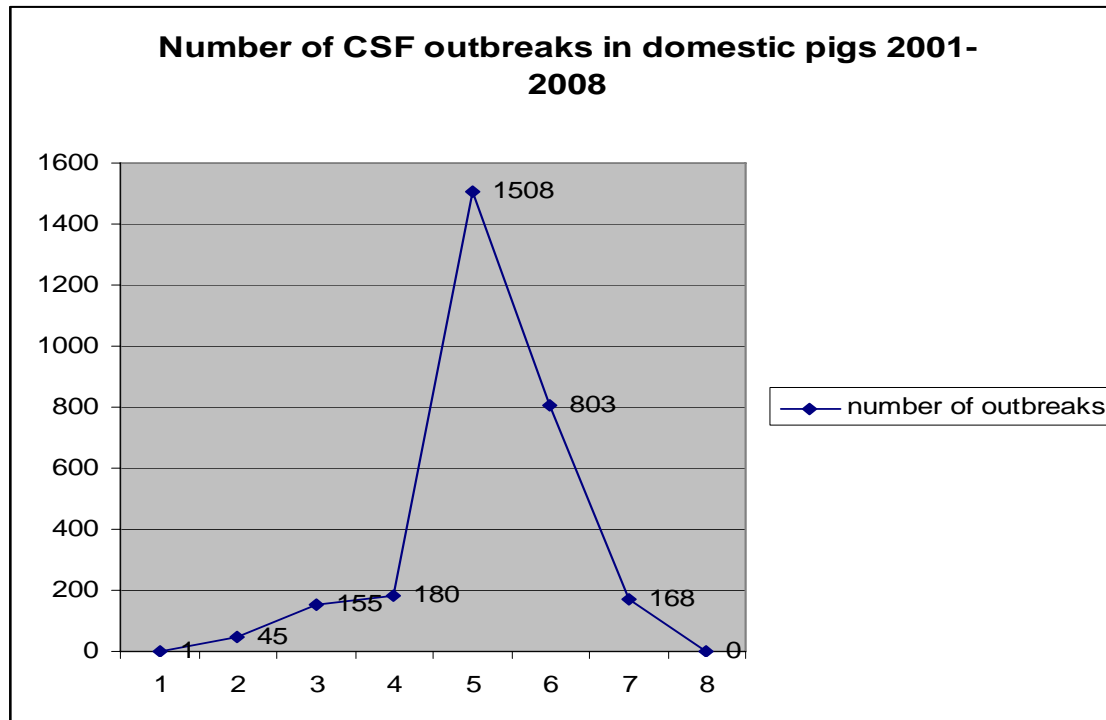
 infected animal with clinical signs

 Infections present in certain zone

 No infections

Outbreaks of CSF

- The peak of CSF outbreaks was in 2005.
- Vaccination campaign led to the improvement of epidemiological situation – absence of CSF outbreaks in 2008 and 2009.





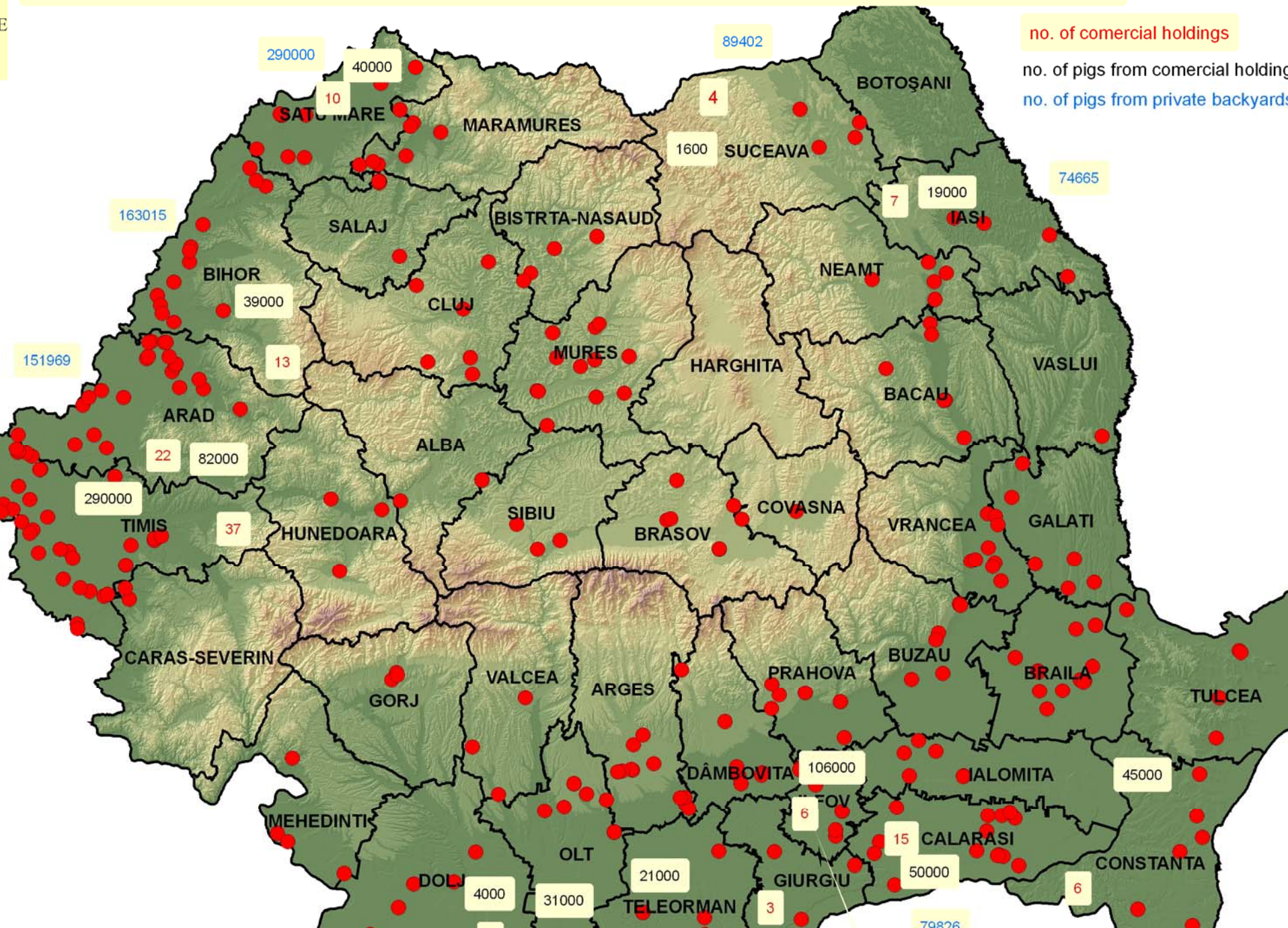
CSF outbreaks 2007 - 2009

	2007		2008	2009
	Non-profess.	Commercial		
CSF outbreaks in domestic pigs	165	3	0	0
Dead pigs due to CSF	507	11030	0	0
Destroyed pigs due to CSF	4002	42659	0	0
Total number of affected pigs	4509	53689	0	0
Affected villages	95	2	0	0
Affected counties	19	1	0	0
CSF cases in wild boar	25	0	0	0

2009-Pigs livestock situations

- On January 1, 2010 in Romania there were 294 Commercial Farms with 1.550.000 pigs.
- On December 15, 2009 in Romania there were approximately 1.500.000 non-professional holding (backyard) with 3.890.000 pigs

Comercial holdings and private backyards situation and pigs density from Romania at 01.01.2010



Data on emergency vaccination for CSF in domestic
pigs from non-professional holdings
1.01.2009 – 30.11.2009

Year	Total no. of herds (non professional holdings)	Total no. of animals at 15 of November	Information regarding the vaccination program			
			Total Nr. of pigs vaccinated *	Number of adult vaccinated animals	No. of young vaccinated animals	No. of vaccine doses administered
2009	1.528.409	3.890.257	5.649.186	333.182	5.316.004	6.082.061

* The vaccinations was held in 2 campaigns in spring and autumn.

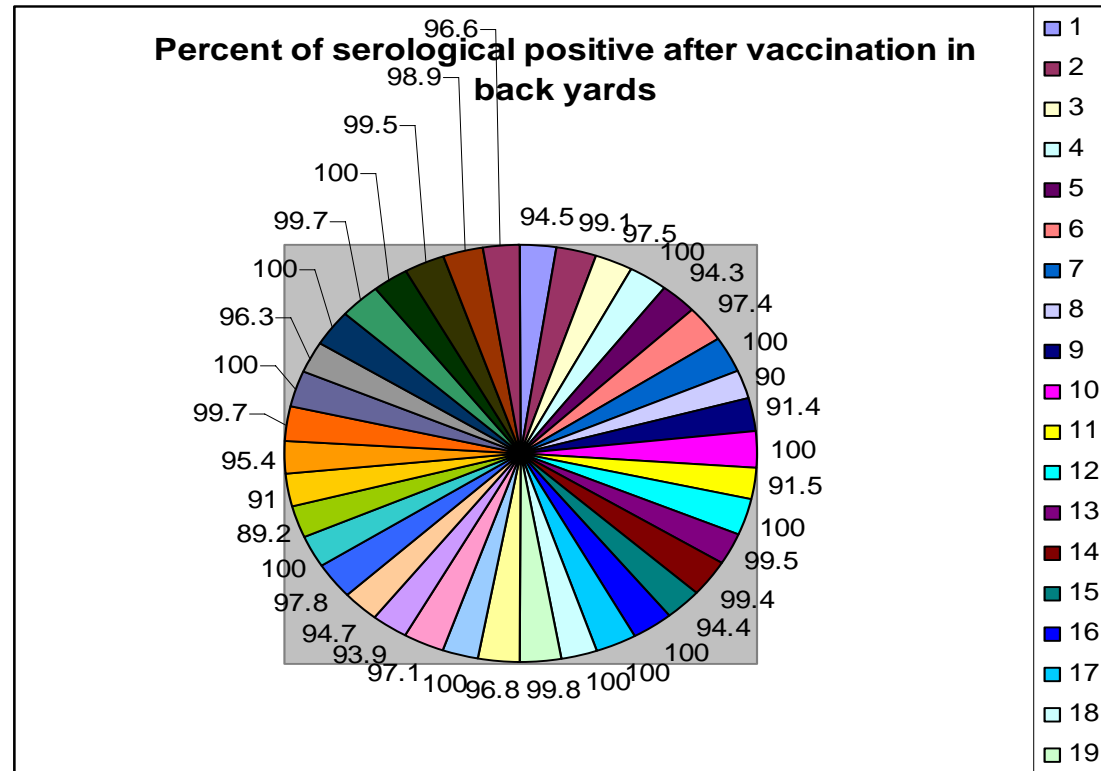
Surveillance of CSF in non-professional holdings 01.01.2009 – 31.12.2009

County	Serological exam with ELISA classic kit				Fluorescence antibody test (FAT)			RT-PCR organs			RT-PCR blood on preservative		
	TS	+	-	D	TS	+	-	TS	+	-	TS	+	-
42	94802	92320	2100	380	876	-	876	16	-	16	41	-	41

- The vaccination campaign in back-yards decrease the viral pressure

Immunity after vaccination in back yards

We consider that immunity after vaccination is good with an average at 96.7%



Emergency vaccination against CSF 2009 – wild boars

Total number of hunting areas	Number of Baits applied	Total number of wild boars	The number of baits recovered
2160	303.135	57000	7376

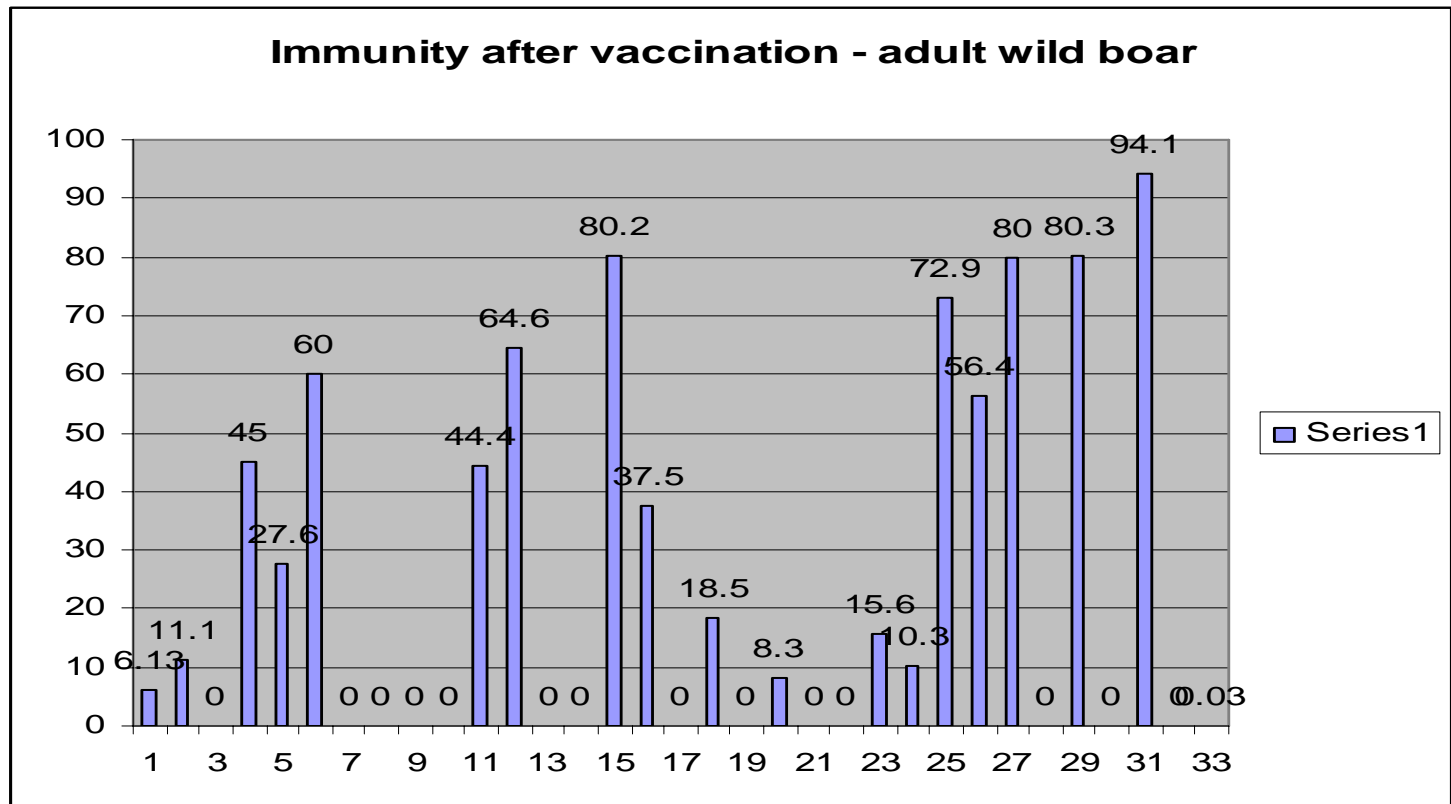
Wild boars Virusological Surveillance

Wild boars age	FAT			RT-PCR		
	Sample	P	N	Sample	P	N
< 1 year	2966		2966	288	1	287
1-2 years	3225		3225	55		55
>2 years	5196		5196	76		76
TOTAL	11387		11387	419	1	418

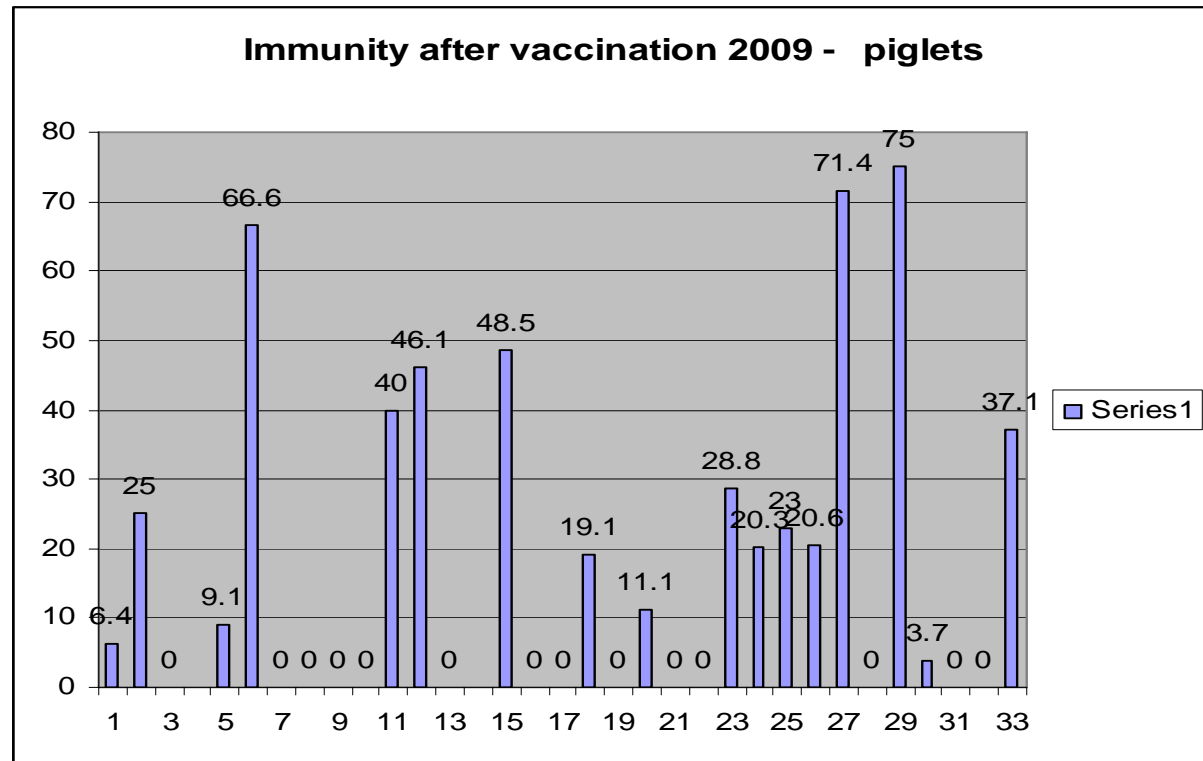
A case of CSF in wild boar

- There was a case of CSF in 12.01.2009 in wild boars (a pig under one year old shot in a hunting ground with a low pig density, no more of 30 wild pigs in all) in the Danube Delta area.
- The RT-PCR test for the detection of CSF virus genome was positive.
- The FAT made on sternal bone marrow smear and cryosection of spleen was negative.
- The virus isolation of CSF virus on cell culture PK15 was also negative.
- NRL for CSF performed the phylogenetic analysis following to viral ARN sequences of glycoprotein gene E2. This strain belongs to subgroup 2.3, having an identity of 99% with the wild virus strains isolated previously in Romania.
- The sample was sent to the CRL for further investigation.

Immunity after vaccination in adult wild boar

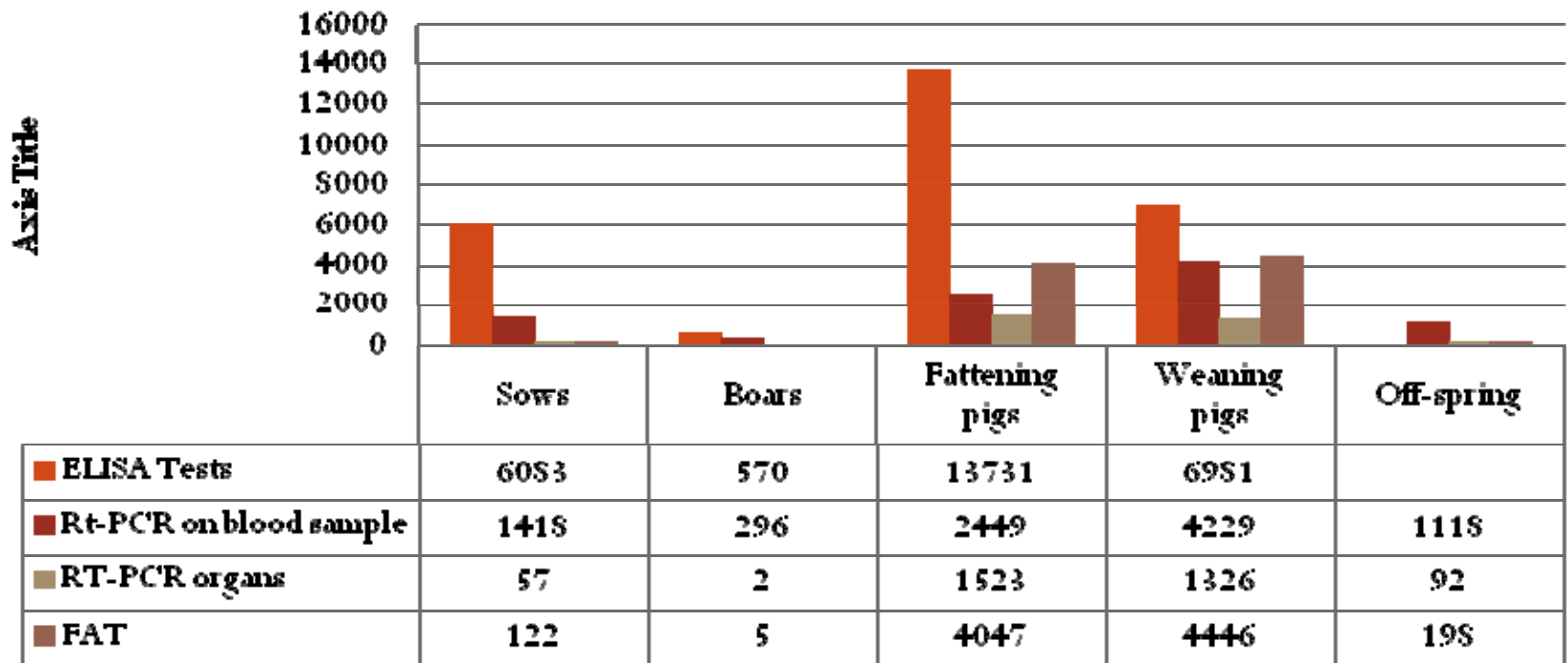


Immunity after vaccination in wild boar - < 1 year



Surveillance in commercial holdings 2009

VIRUSOLOGICAL AND SEROLOGICAL SURVEILLANCE



Strategies for 2010

- For 2010, the eradication program will be applied all over Romania. Regarding vaccination, the strategy adopted provides cessation of vaccination for all domestic pigs and emergency vaccination only for the wild boards, in risk areas.
- In February-March, at the all 42 county will be organized CSF simulation exercises, involving all the authorities; the exercises will be organized by the competent territorial authorities, according to the working procedures used in the international simulation exercise for Foot an Mouth disease, with European Community support.
- The Strategic Plan for 2010 (Government Decision no.2/2010) provided the “standstill” regulation for 30 days for pigs.
- This “standstill” regulation is under construction and this regulation will introduce the obligation to certify the domestic swine movements, as a specific regulation for domestic pigs coming from backyards.