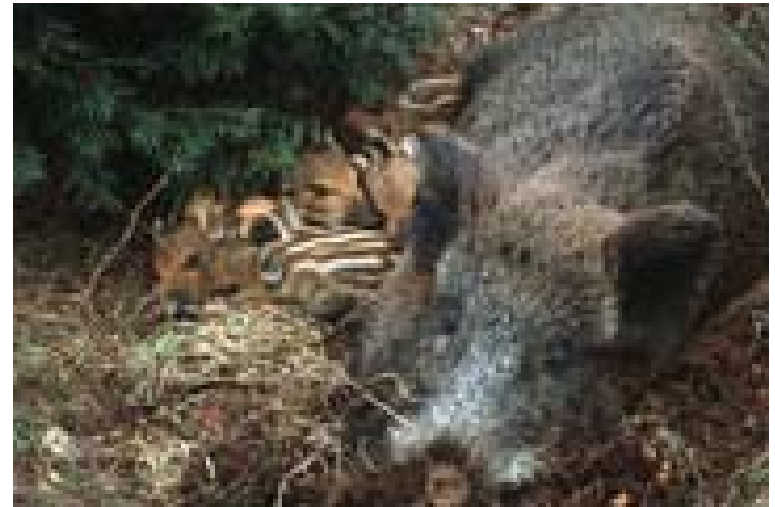
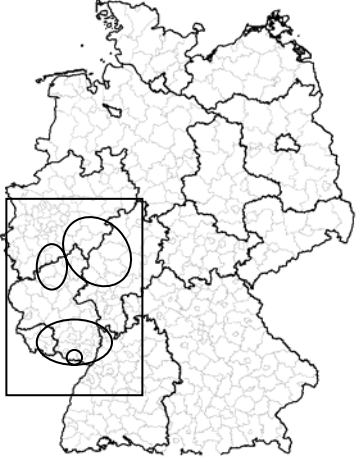


Application of the Classical Swine Fever Control Program in Germany



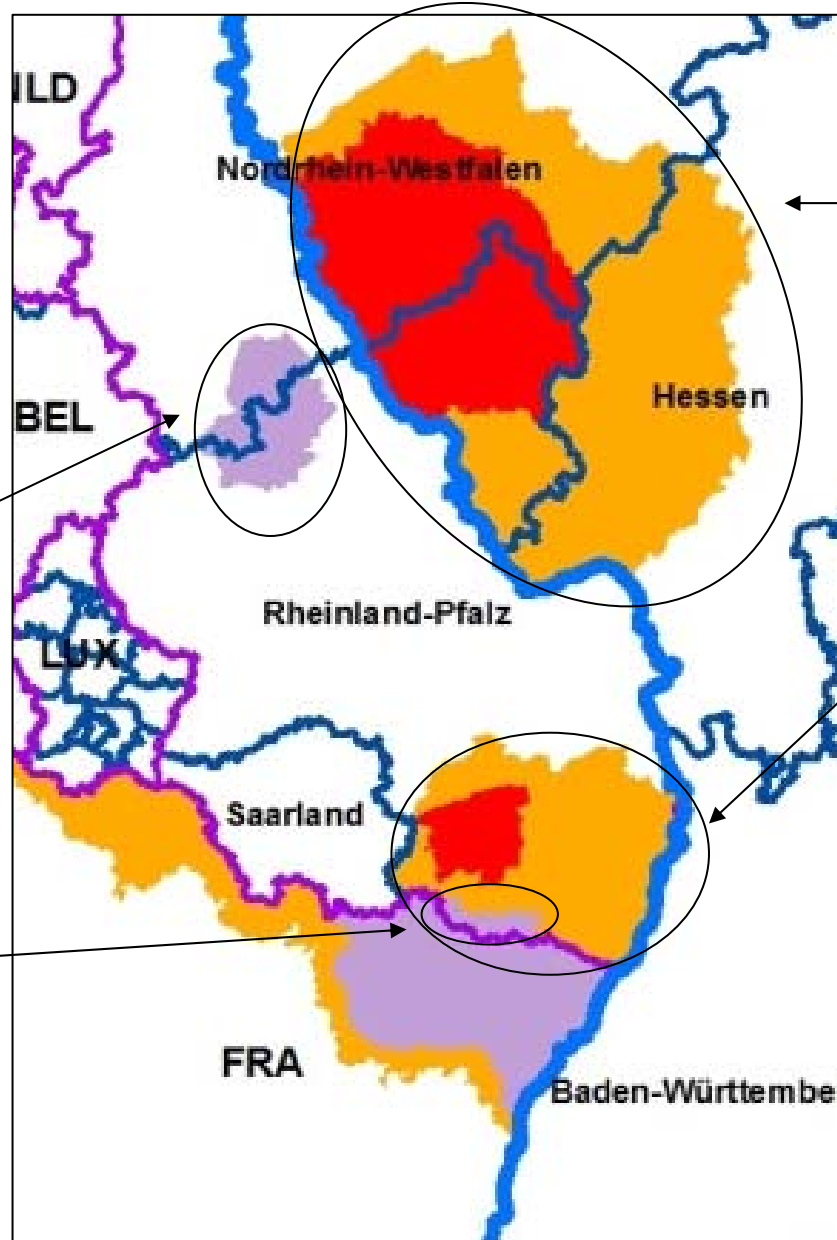
CSF-situation in Germany 2009 - 2011

Federal Ministry
of Food, Agriculture and
Consumer Protection



CSF-vaccination area in **Eifel** region, last CSF-case 11 July 2007, vaccination since December 2005, lifted in spring 2010

Cordon sanitaire due to CSF-findings in France, last case in France 2007, no „German“ case, lifted in spring 2010

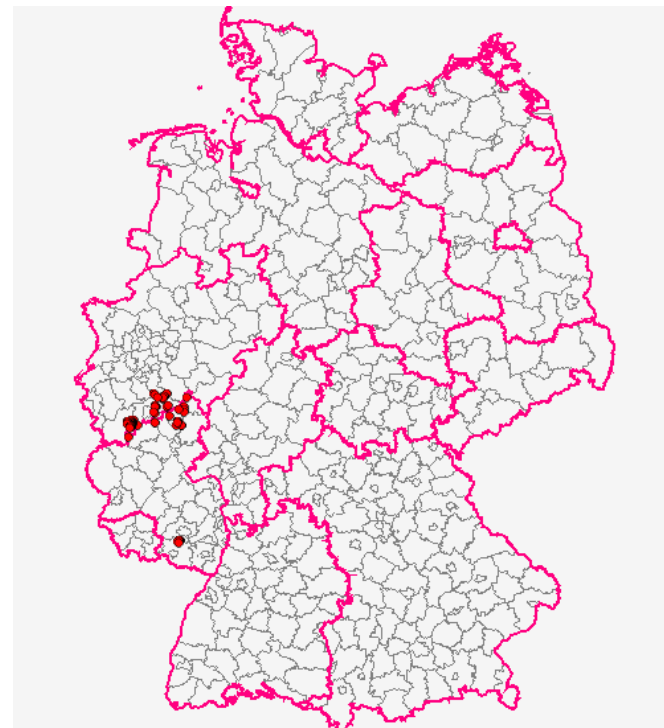
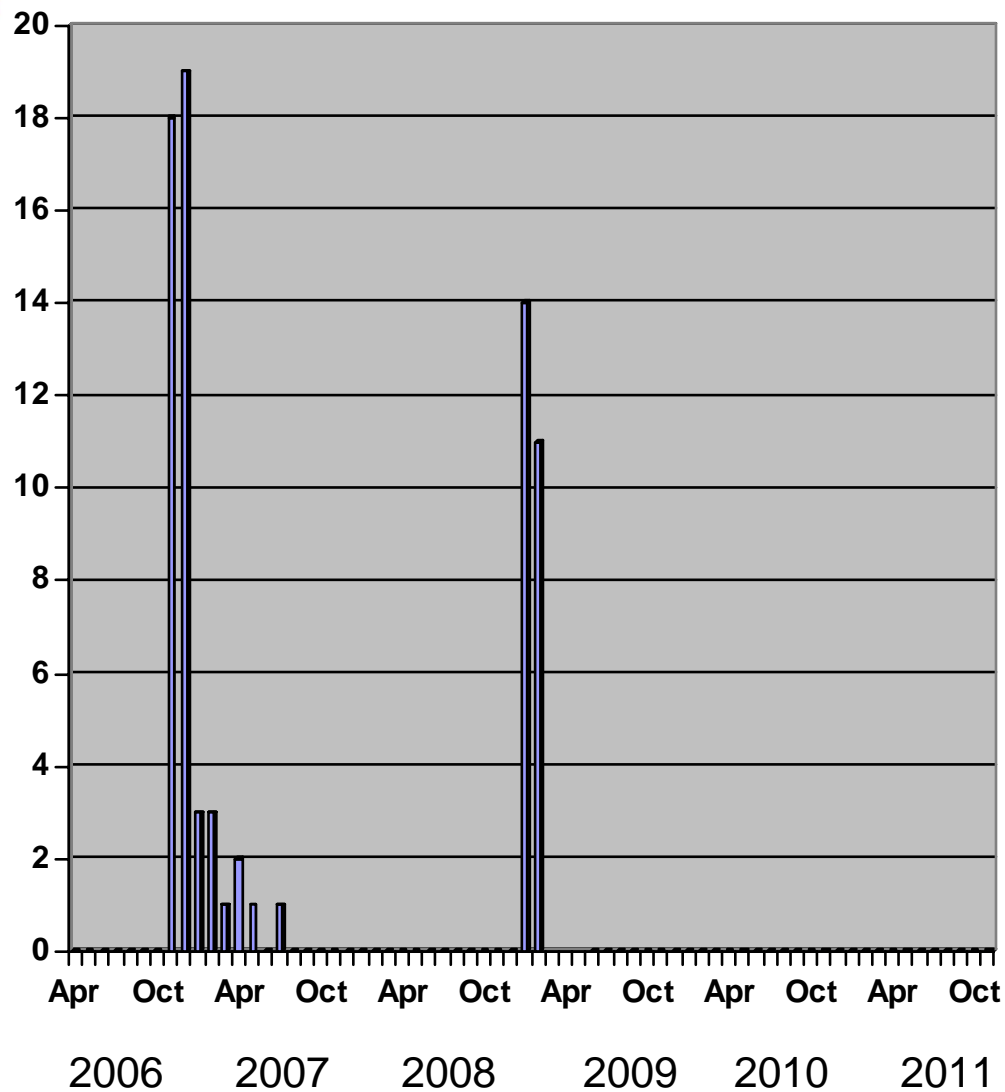


CSF-restriction area on the **right side of the river Rhine**, last CSF-case 29 July 2009, vaccination started in March 2009 (ongoing)

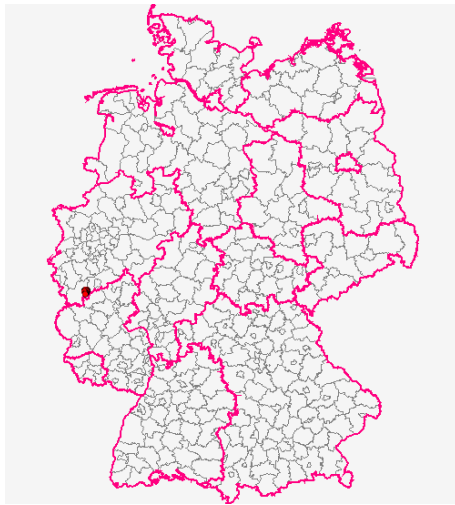
CSF-restriction area in the **Pfalz** region, last CSF-case 30 April 2009, vaccination started in April 2009 (ongoing)

- Infected area
- Monitoring area
- Vaccination area

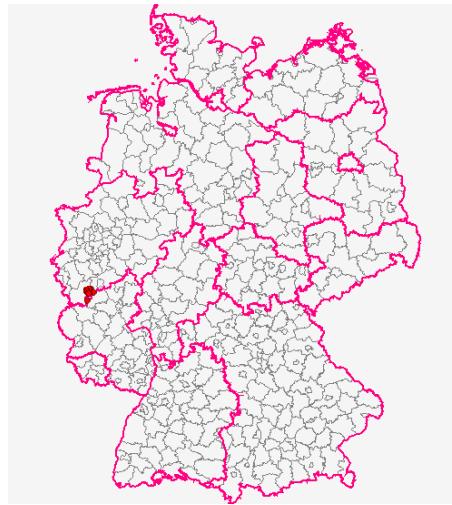
number of CSF-cases in wild boar 2006-2011



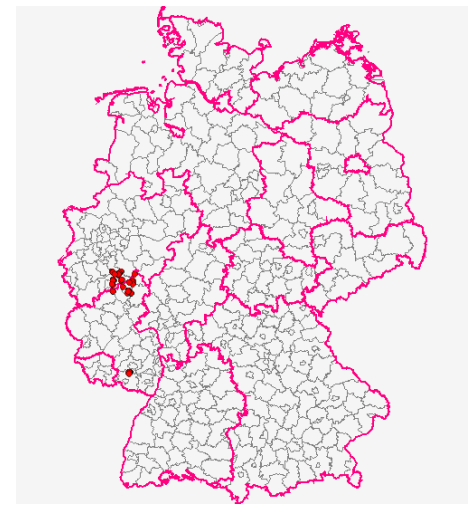
distribution of CSF in Germany 2006 - 2011



2006



2007



2009

2008, 2010 and 2011 no CSF-cases in wild boar

Expensions for measures according to Control Program in 2010

domestic pigs:

- 40.025 ELISA-tests (ca. 187.000,- Euro)
- 13.968 additional laboratory tests (virus isolation, zell cultures, etc.) (ca. 264.000 Euro)

wild boar:

- 73.722 ELISA-tests (ca. 411.000 Euro)
- additional laboratory tests 25.604 (ca. 575.000 Euro)
- vaccination with distribution of 1.139.200 baits (ca. 1.045.600 Euro)

Total costs for virological and serological examination of domestic and wild boar and for vaccination of wild boar in 2010: ca. 2.48 Mio Euro

laboratory testing of domestic pigs in 2010

	Number of tests		
	ELISA	Others: virus isol., cell culture	others
B.-Württemb.	4.419	16	315
Bavaria	2.135	83	979
Berlin	0	0	0
Brandenburg	1.043	111	255
Hesse	1.084	102	12
M.-Western Pomerania	7.000	0	277
Lower Saxony	11.350	1.167	4.080
North Rhine-Westf.	9.273	0	4.038
Rhineland-Palatinate	1.175	53	541
Saarland	175	0	2
Saxony	1.510	1.152	690
Saxony-Anh.	0	0	0
Schlesw.-Holst.	664	6	9
Thuringia	197	0	80
Total	40.025	2.690	11.278
Costs	187.281,08	78.063,43	186.153,44

laboratory testing of wild boars in 2010

	Number of tests		
	ELISA	Others: virus isol., cell culture	others
B.-Württemb.	2.086	1	1.988
Bavaria	1.451	0	61
Berlin	0	0	0
Brandenburg	1.643	205	640
Hesse	6.965	6	5.349
M.-Western Pomerania	4.759	5	148
Lower Saxony	3.770	0	3.989
North Rhine-Westf.	14.809	0	3.070
Rhineland-Palatinate	22.211	6	5.043
Saarland	5.879	0	2.657
Saxony	7.407	579	933
Saxony-Anh.	1.333	0	142
Schlesw.-Holst.	424	523	132
Thuringia	985	0	127
Total	73.722	1.325	24.279
Costs	410.821,94	27.921,46	546.901,12

vaccination of wild boar in 2010

	Number of baits	Expensions for the baits	Distribution costs
Total	1.139.200	1.025.870,--	19.800,00
North Rhine- Westfalia	605.600	545.040,00	
Rhineland- Palatinate	533.600	480.830,00	19.800,00

perspective for 2012

- last performance of double vaccination campaign in spring 2012, hereafter ceizing of vaccination activity
- transformation of infected areas and vaccination areas into intensive monitoring areas (laboratory examination of all shot and fallen wild boar)
- in other parts of North Rhine-Westphalia and Rhineland-Palatinate: monitoring of all fallen wild boar and shot young wild boar up to 30 kg
- continued application of an action program agreed with hunters organisations for the hunting year 2011/2012 – intensive hunting (lifting of shutoff)

Thank you for your attention!



SCOFCAH 8 - 9 November 2011