

Bovine Brucellosis the United Kingdom (Northern Ireland) 2010

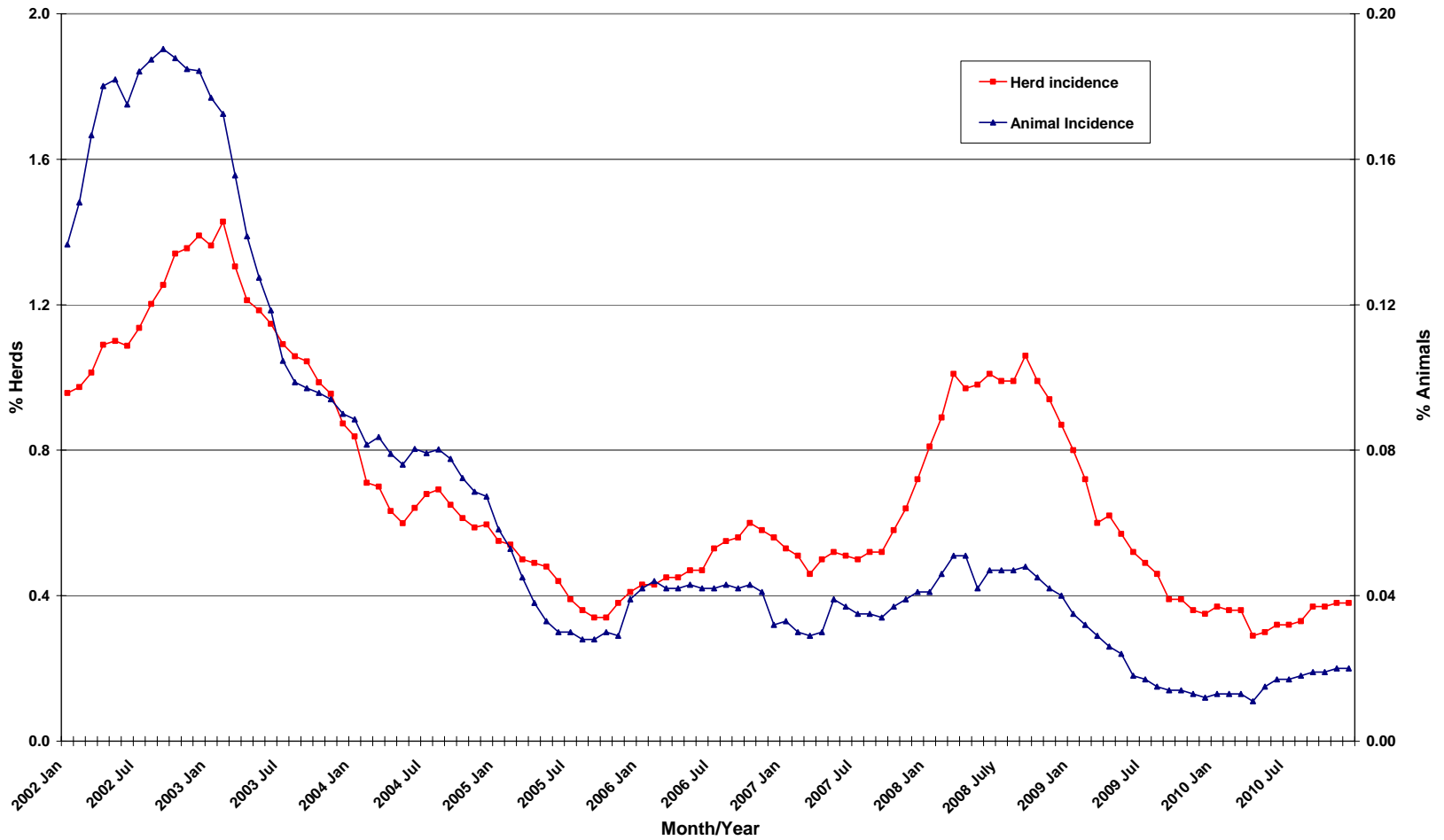
SCoFCAH

Current Control Measures

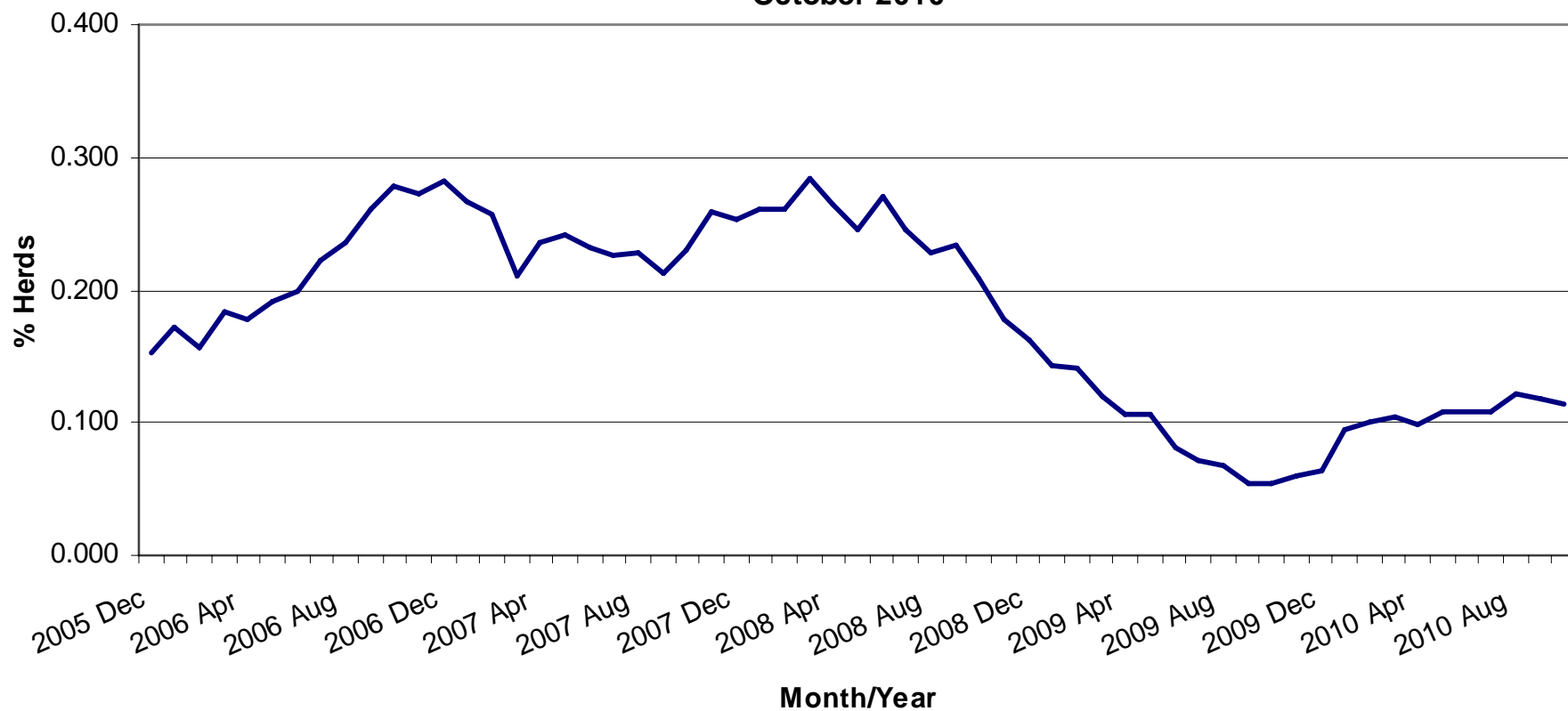
- **Brucellosis Control Initiative** – an implementation task force with dedicated staff
- **Brucellosis audits of field offices by HQ staff**
- **Publicity Campaign** – posters, press articles, etc. emphasis on abortion reporting
- **Staff training and Private Vet meetings;**
- **Bulk Milk Elisa testing applied to all dairy herds**
- **Abattoir surveillance for females over 48 months**
- **i-Elisa introduced in risk herds**
- **Annual testing in all DVO's**
- **Pre-movement testing for all eligible cattle over 12 months**
- **Cattle identification inspections for herds experiencing a breakdown.**
- **Tracing and purchase of the progeny of reactors**
- **Removal of low CFT animals**
- **Enhanced restrictions on contiguous herds**
- **Temporary Control Areas with increased controls**
- **Management database designed to facilitate local management of outbreaks**
- **Modifications to valuation procedure to reduce potential for over-compensation**
- **Slurry treatment with lime in breakdown herds to kill the bacterium**



BR Herd and Animal Incidence
 (12 month moving average: January 2002 to December 2010)



BR annual herd incidence where infection confirmed by culture: December 2005 to October 2010



UK (NI): test and Disease Statistics: 2005-2010

Year	No. cattle tested	Animal Incidence	Herd Incidence
2005	911790	0.039	0.41
2006	928500	0.032	0.56
2007	911394	0.041	0.72
2008	908811	0.040	0.87
2009	888898	0.012	0.35
2010	867402	0.020	0.38

Confirmed Herd Incidence	%
2005	0.15
2006	0.28
2007	0.25
2008	0.16
2009	0.05
2010	0.10

Data on infection 2009

Species	Number of new herds infected	Number of positive animals
Bovine	71~	116#

13 herds had infection confirmed by culture

~ serological reactor in herd where no reactor animal identified in previous 12 months
seropositive animals

Data on infection 2010

Species	Number of new herds infected	Number of positive animals
Bovine	74~	184#

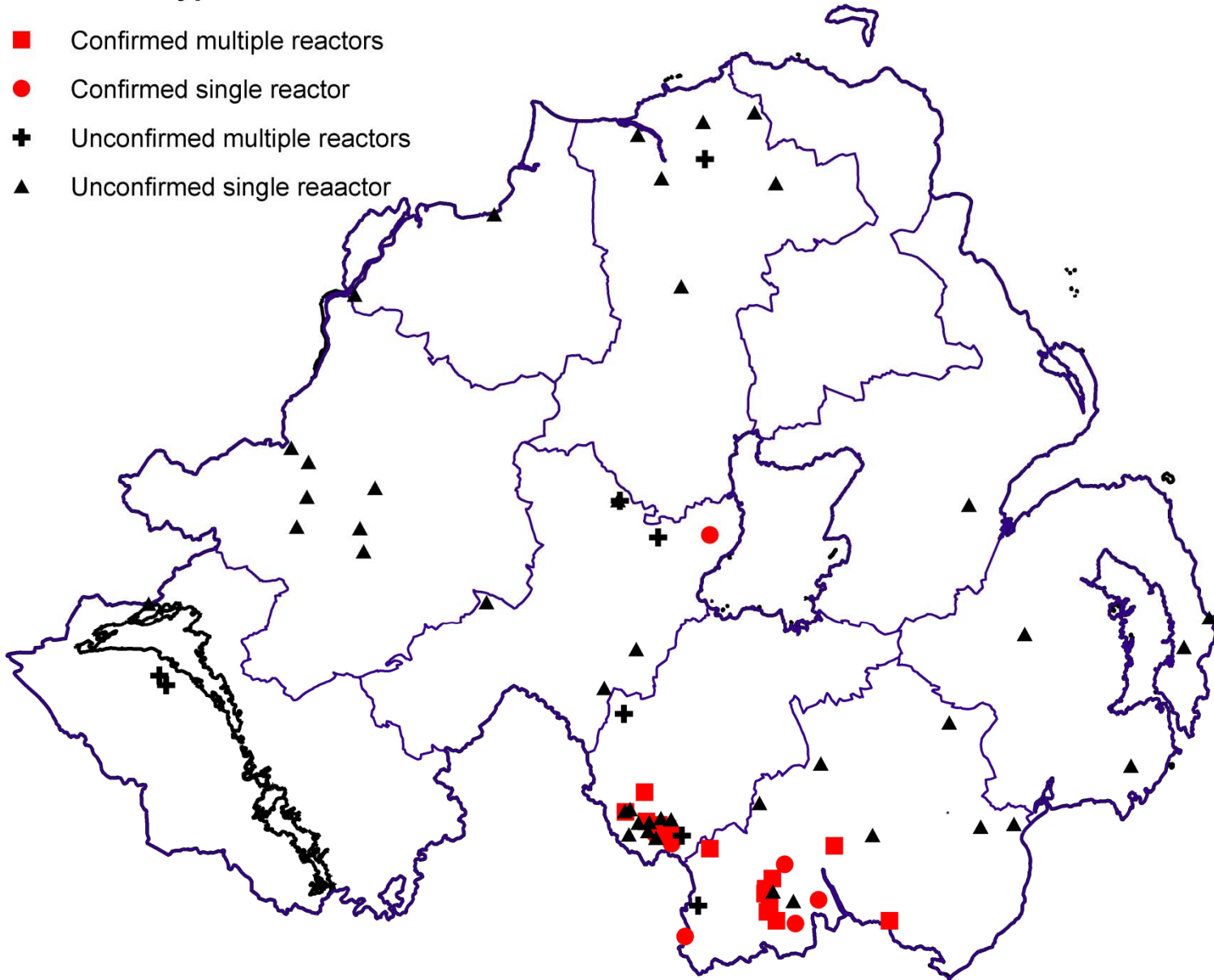
24 herds had infection confirmed by culture

~ serological reactor in herd where no reactor animal identified in previous 12 months
seropositive animals

Brucellosis breakdowns 2010

Breakdown Type

- Confirmed multiple reactors
- Confirmed single reactor
- + Unconfirmed multiple reactors
- ▲ Unconfirmed single reactor



Summary

More focused and intensive disease control efforts since 2007 had resulted in significant improvements in herd incidence, animal incidence and confirmed incidence of the disease.

In late December 2009 there appeared to be an incident of deliberate infection.

The spread from this and from a 2nd cluster of infection in a neighbouring division resulted in an increase in the number of infected herds in 2010, setting back the substantial progress that had been made in the previous year.

Intensive measures, including Temporary Control Areas, were introduced with the aim of early detection of spread.

Most of the new confirmed infection was confined to the first half of 2010 with much reduced numbers of new breakdowns since then.

There were 24 confirmed breakdowns in 2010 (There have been 4 so far in 2011 – to end Aug)