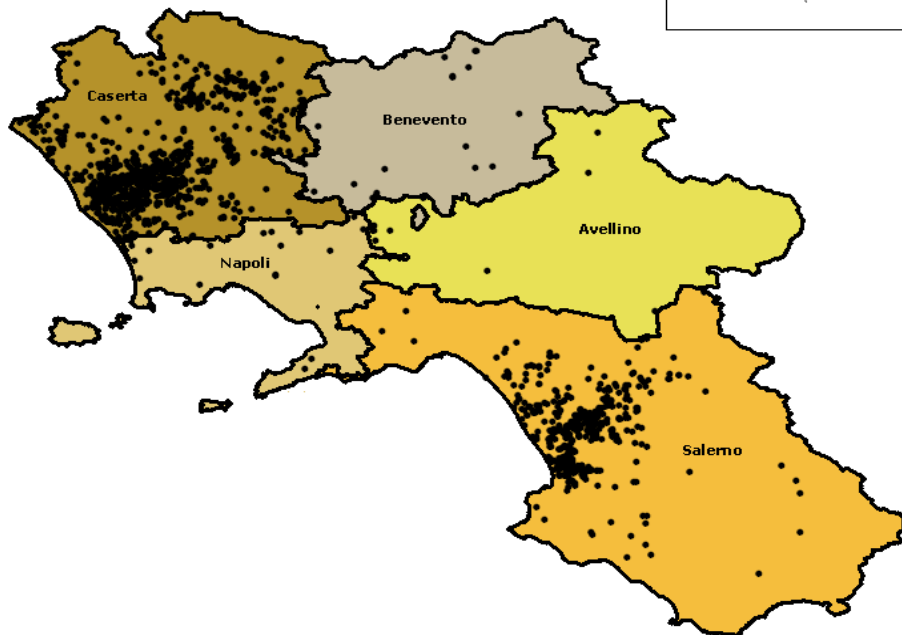


# Regione Campania Distribuzione allevamenti bufalini per provincia



## Legenda

- ALLEVAMENTO
- Province
- AV
- BN
- CE
- NA
- SA

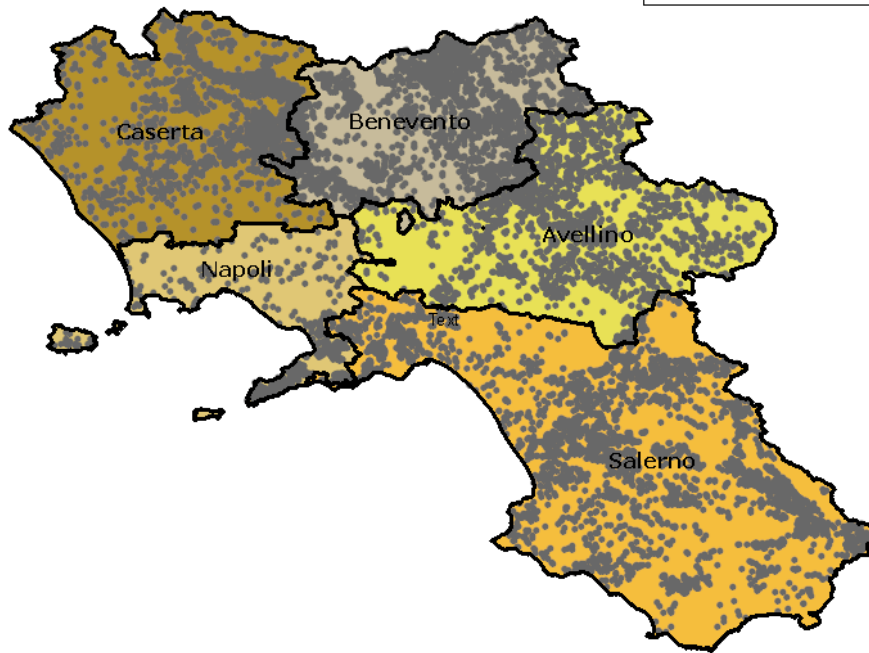
0,1 0,05 0 0,1 0,2 0,3 0,4  
Decimal Degrees

Campania Region:  
buffalo herds  
distribution










N

### Regione Campania Distribuzione allevamenti bovini per provincia



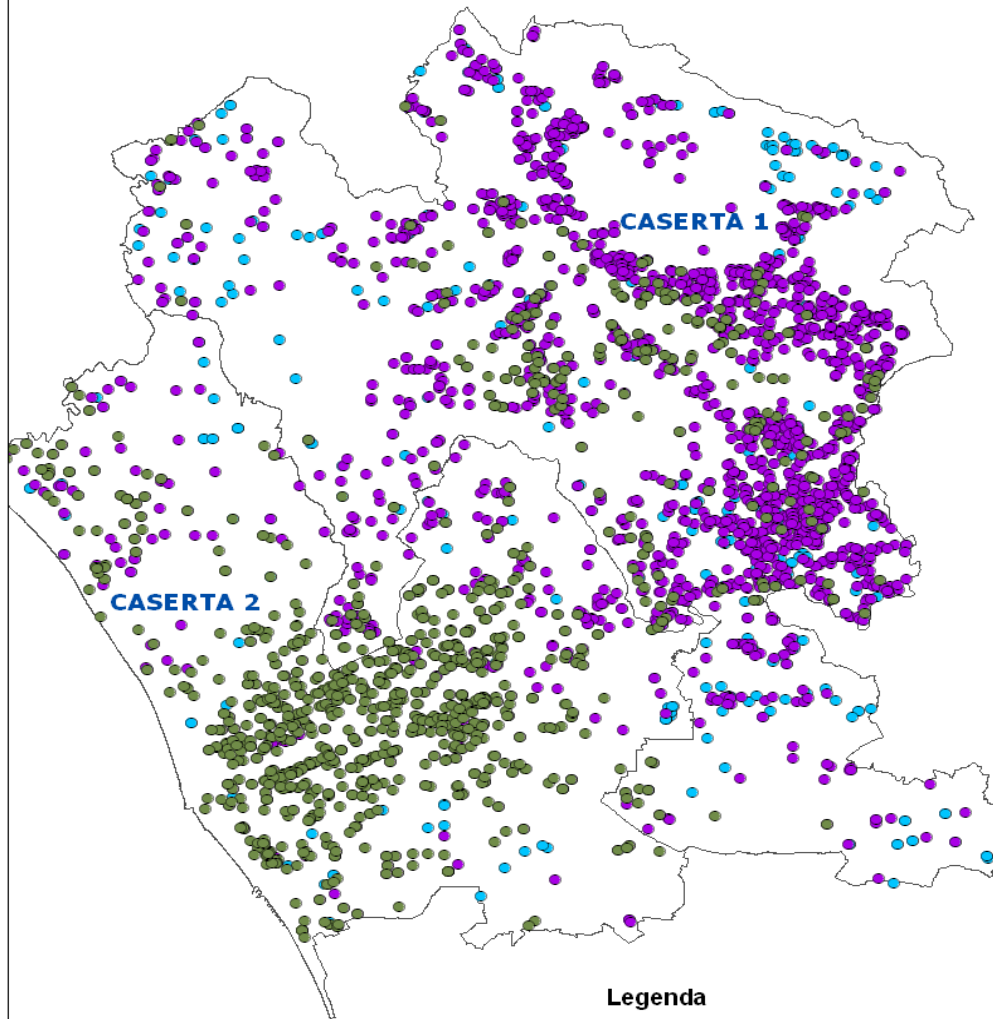
#### Legenda

-  Province
-  ALLEVAMENTO
-  AV
-  BN
-  CE
-  NA
-  SA

0,1 0,05 0 0,1 0,2 0,3 0,4  
Decimal Degrees

Campania Region:  
bovine herds  
distribution





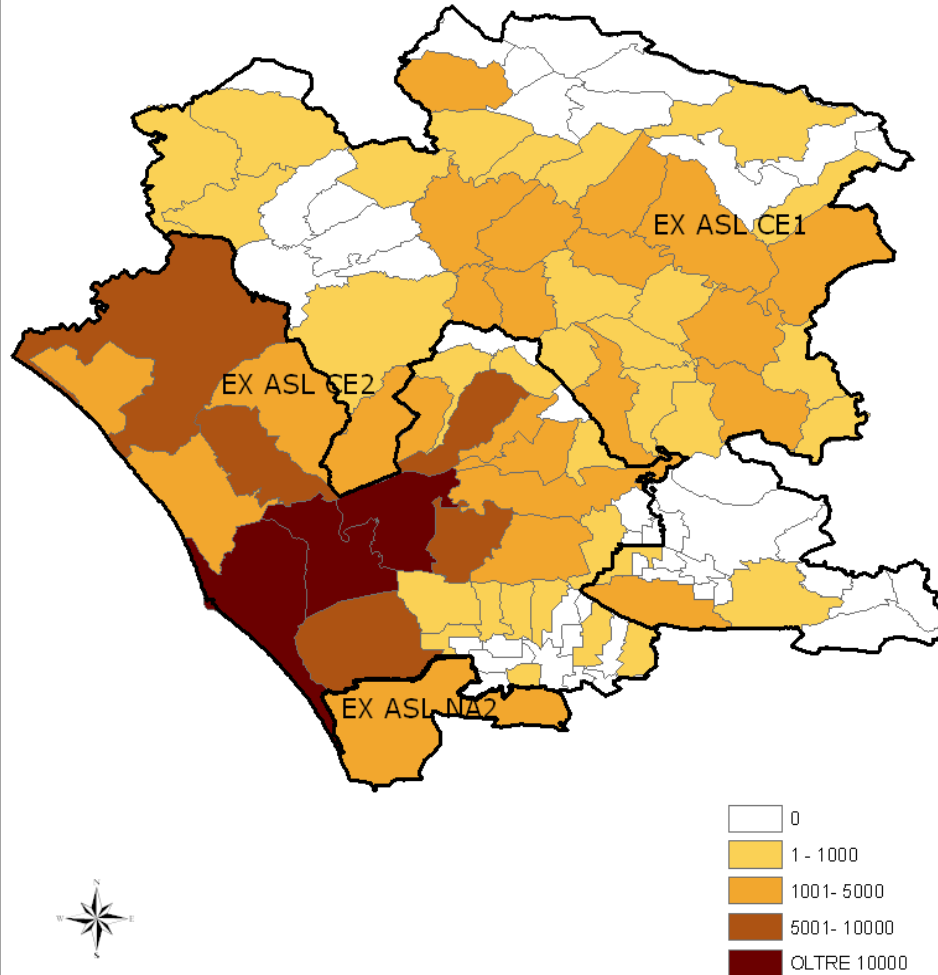
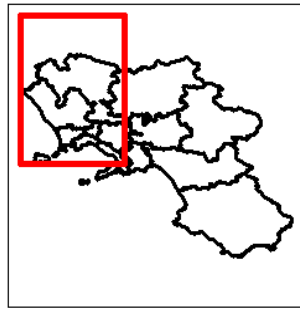
**Legenda**

- **Aziende Bufaline**
- **Aziende Bovine**
- **Aziende ovi-caprine**
- Provincia di Caserta**

# Caserta Province: Bovine, Buffalo and ovi-caprine herds distribution



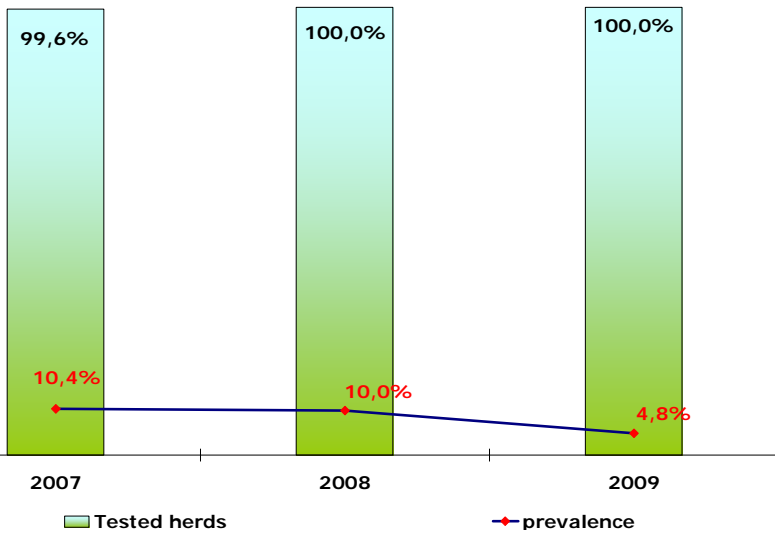
**Provincia di Caserta e zone limitrofe**  
**Distribuzione capi bufalini per Comune**



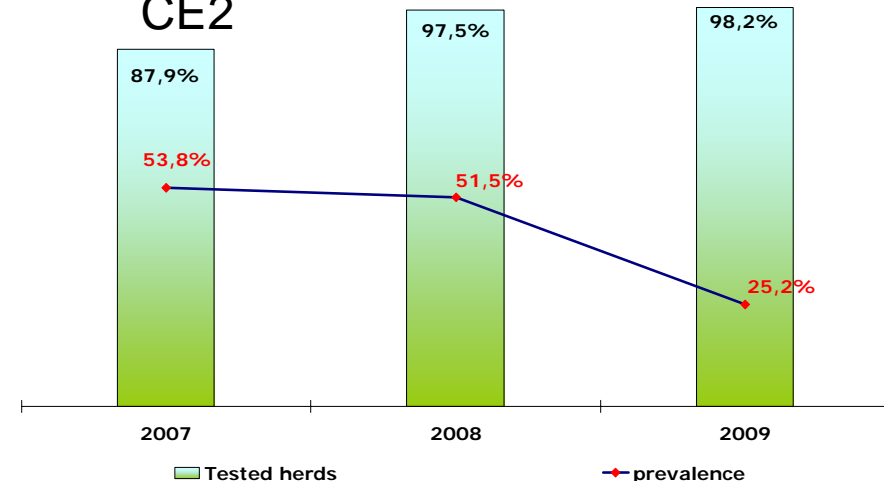
Caserta Province:  
buffalo density

# % buffalo herds tested for brucellosis and prevalence 2007-2009

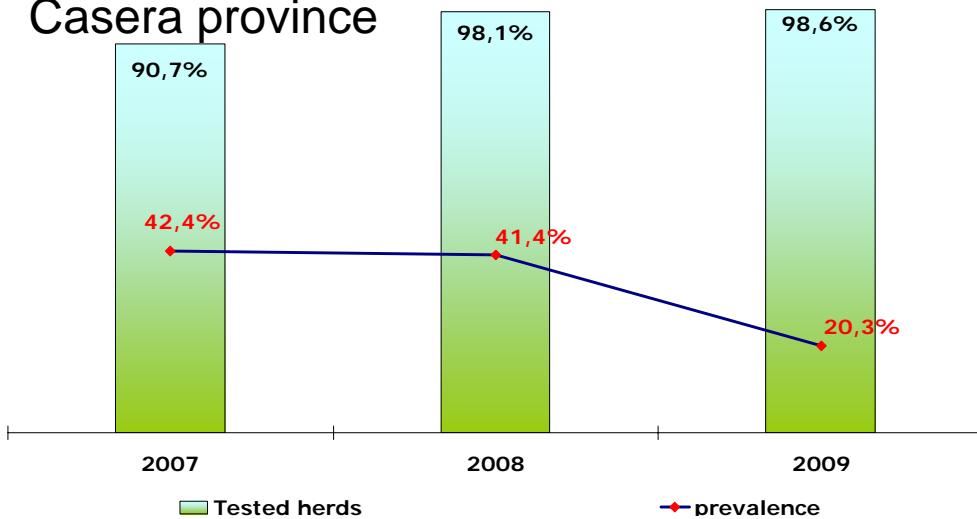
## CE1



## CE2

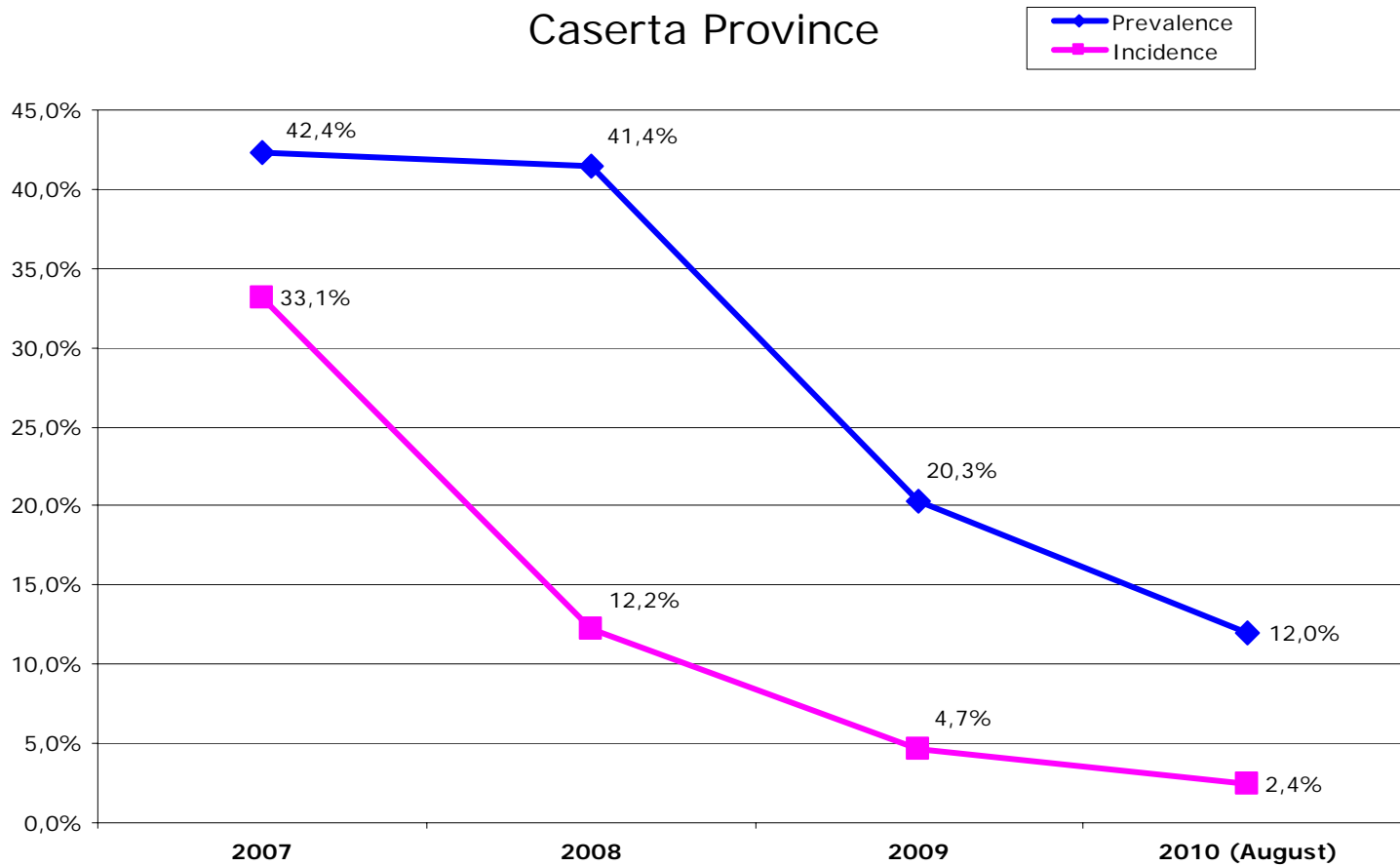


## Casera province

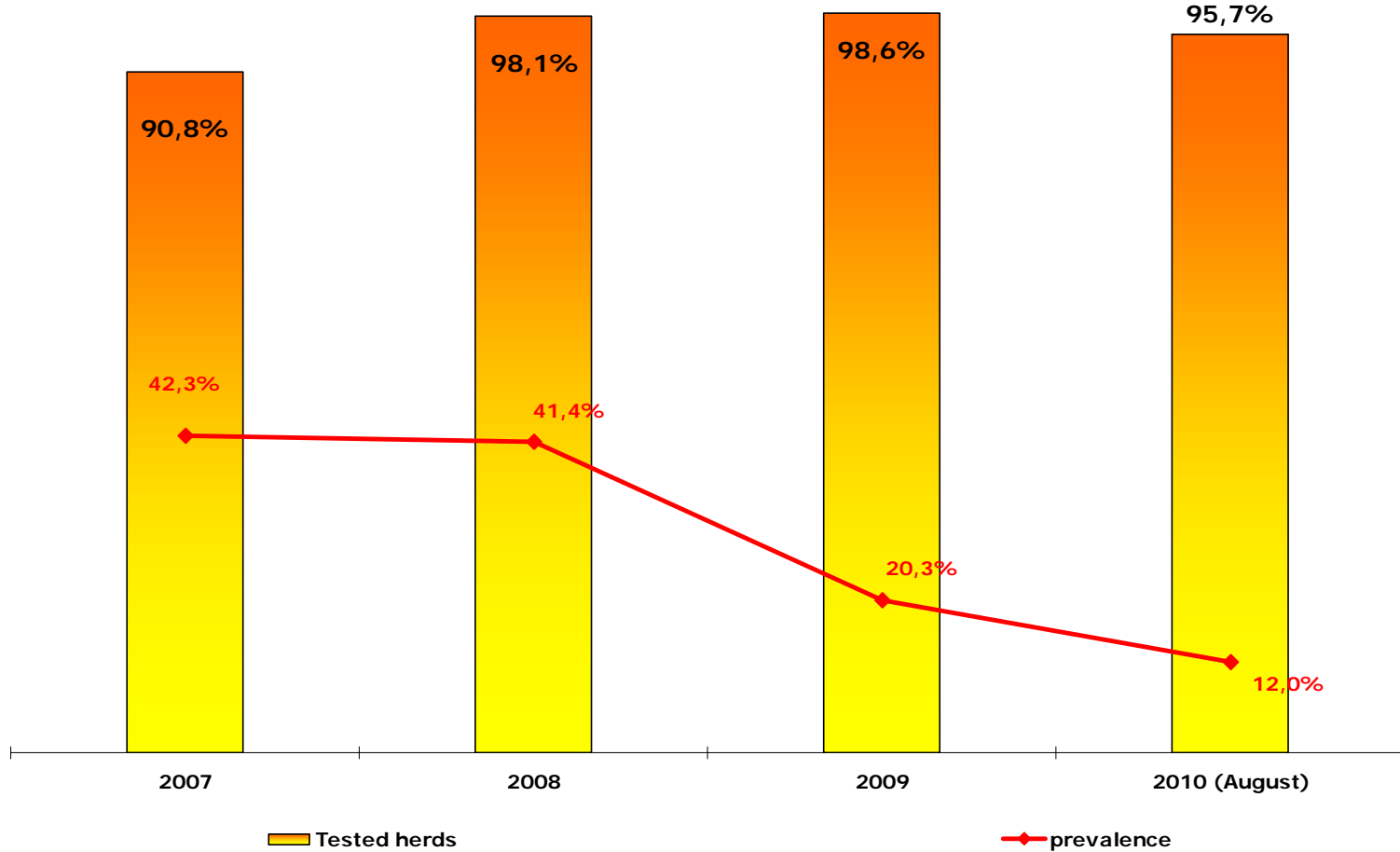


# Bufaline Brucellosis: Prevalence and incidence 2007 – 2010 (August)

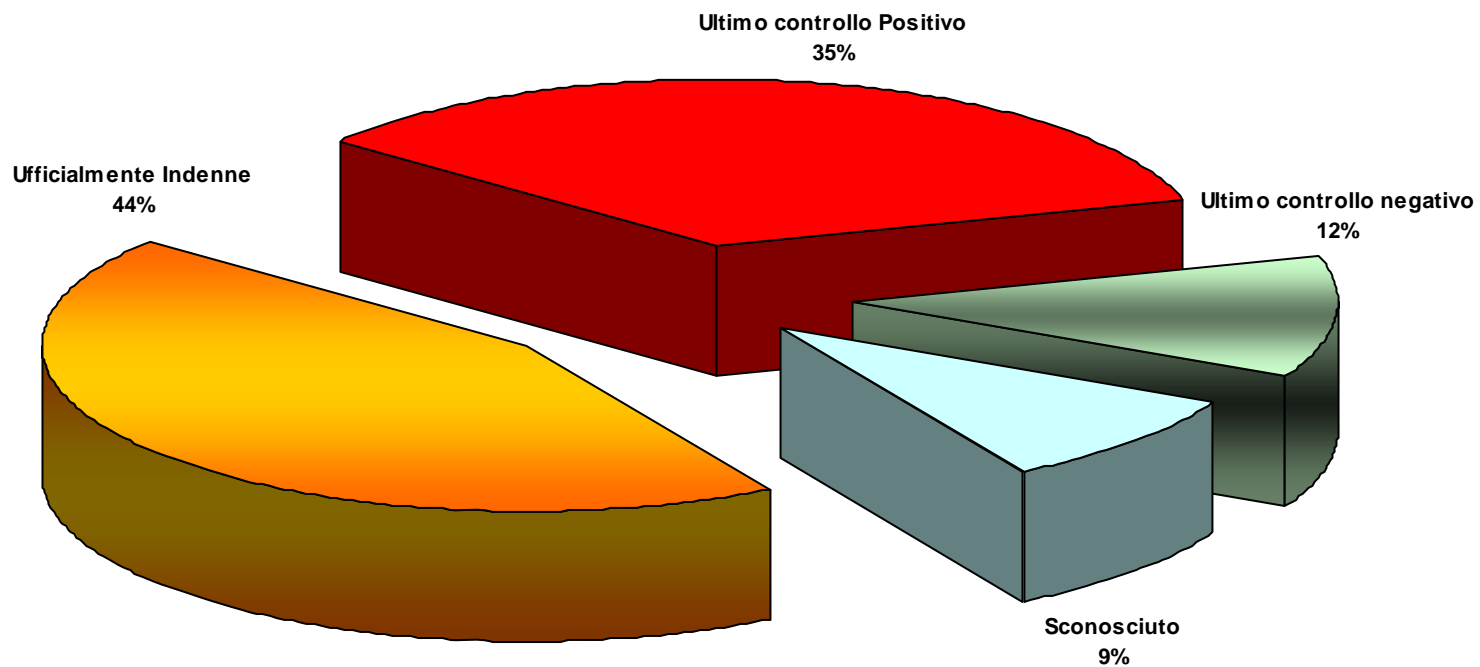
Caserta Province



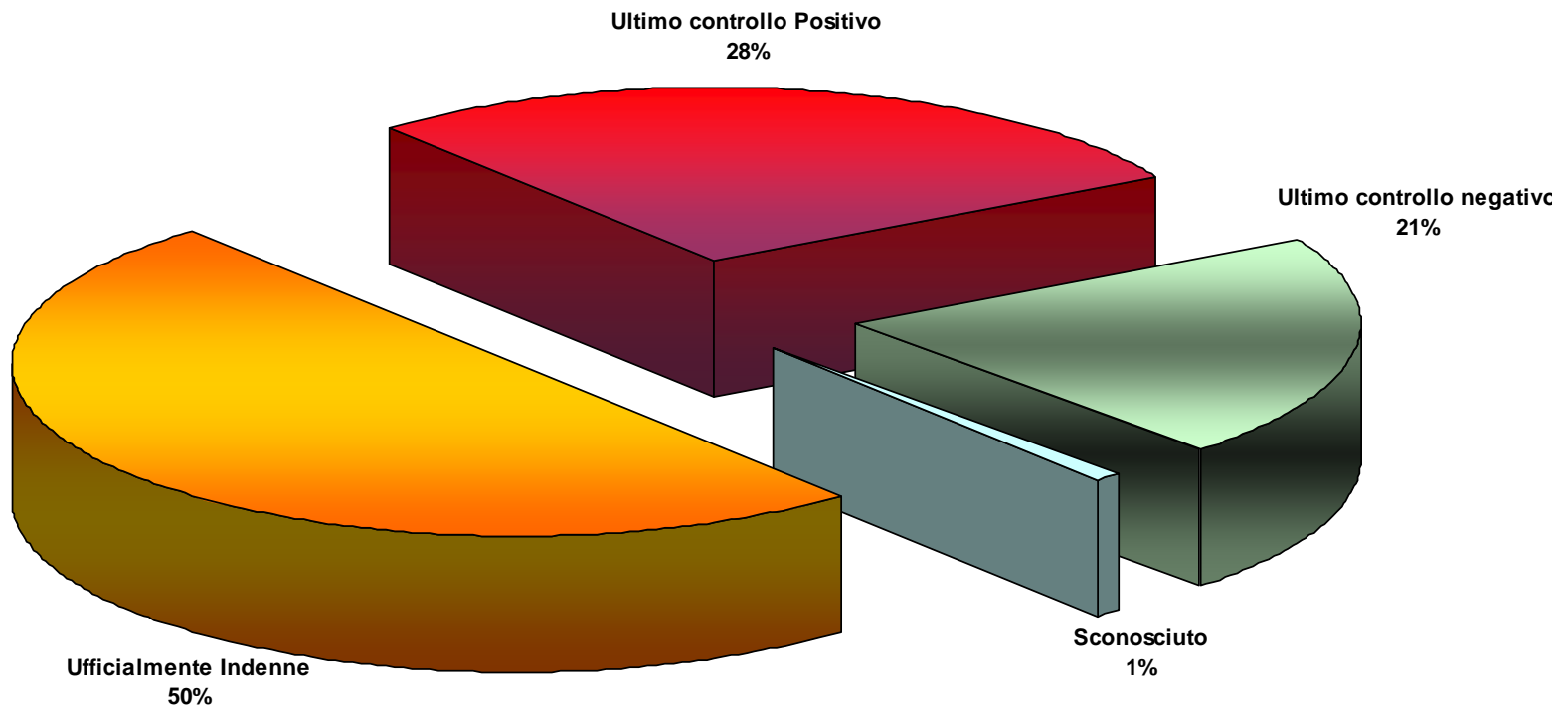
# Caserta province: tested buffalo herds and prevalence from January 2007 to August 2010



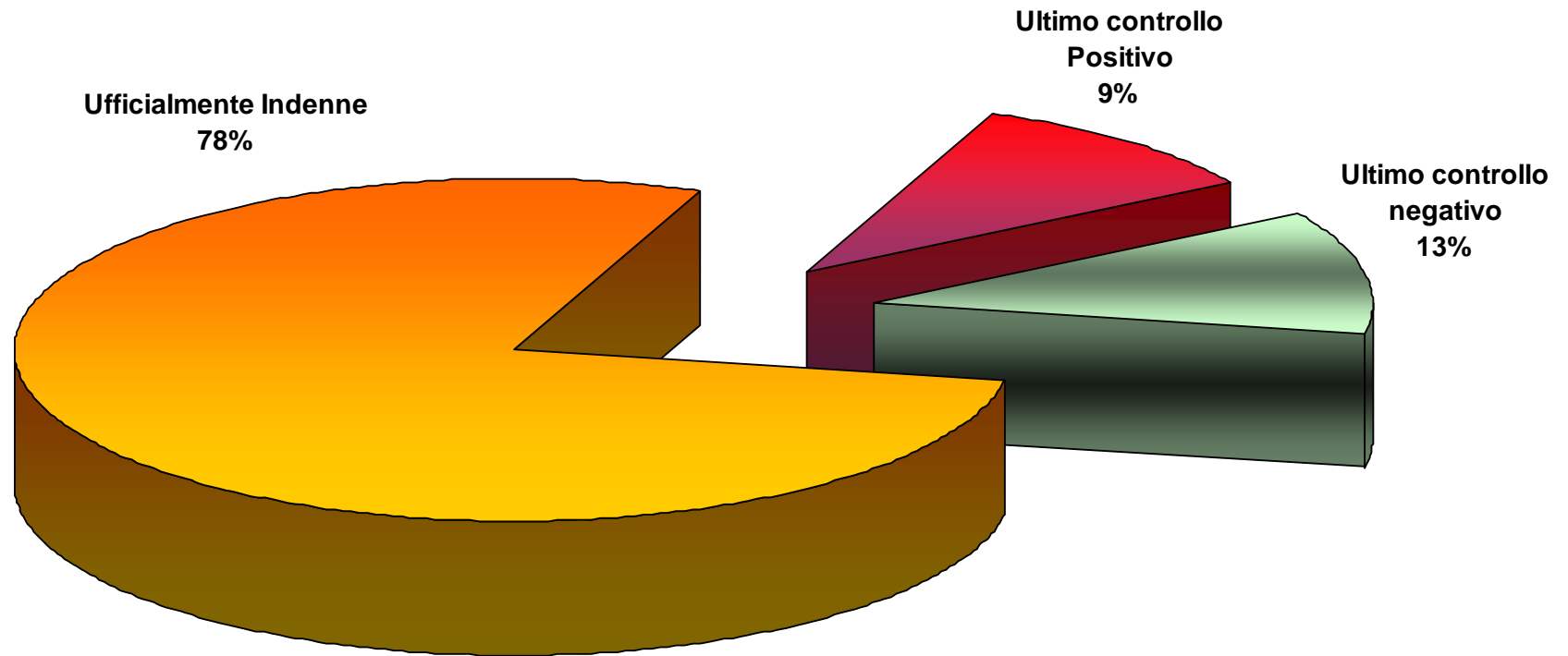
# Caserta Province: herds sanitary status December 31 2008

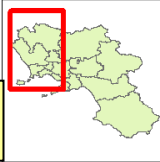


# Caserta Province: herds sanitary status December 31 2009

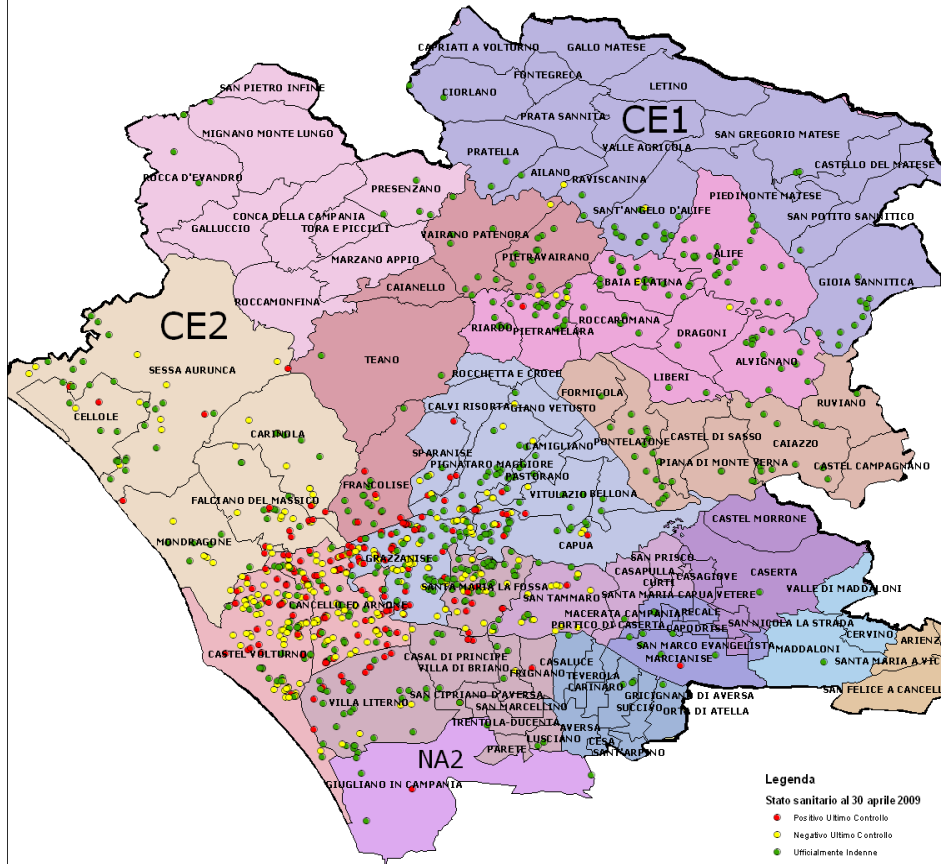


# Caserta Province: herds sanitary status August 30 2010





# Allevamenti bufalini provincia di Caserta: stato sanitario al 31/12/2008



**Legenda**  
 Stato sanitario al 30 aprile 2009

- Positivo Ultimo Controllo
- Negativo Ultimo Controllo
- Ufficialmente Indenne

**DISTRETTO**

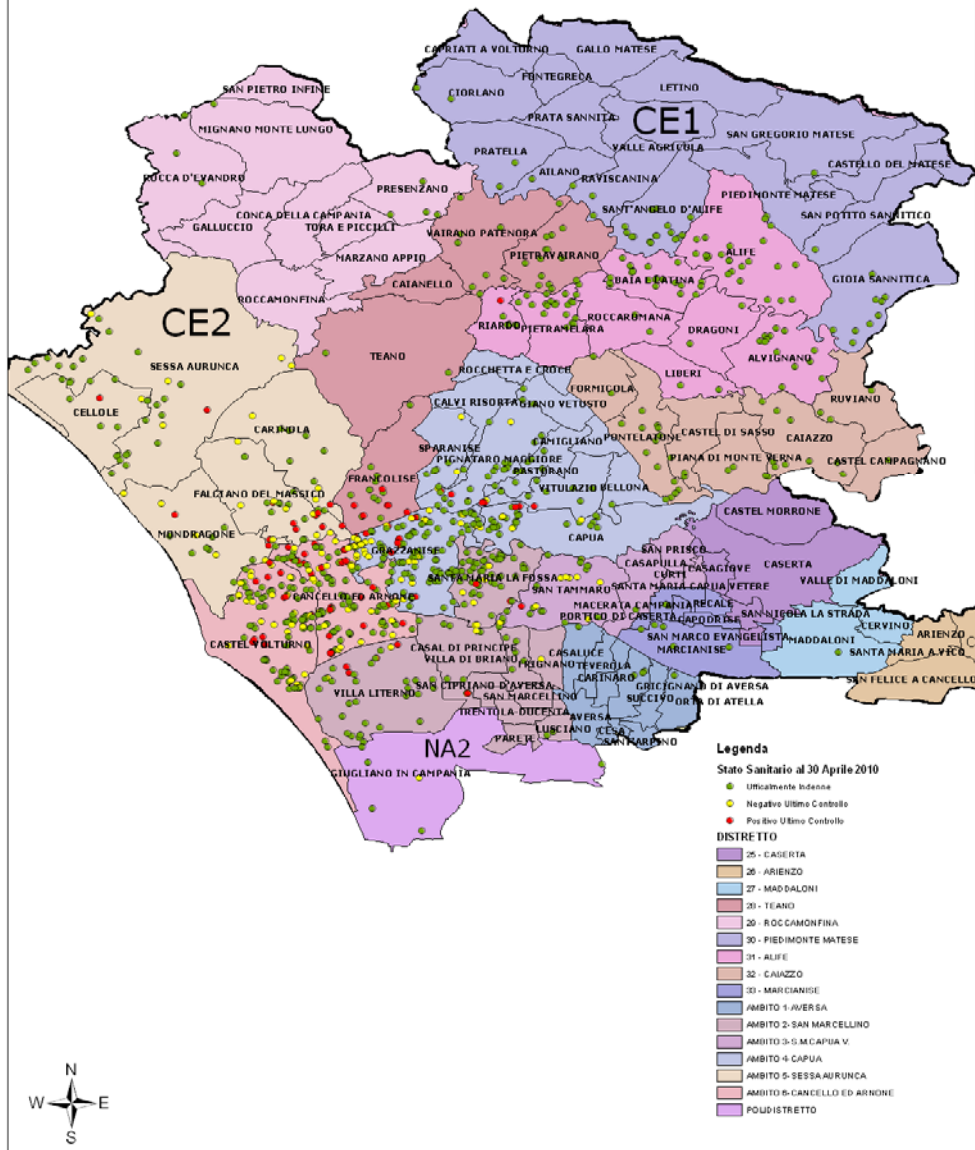
- 25 - CASERTA
- 26 - ARIENZO
- 27 - MAD DALONI
- 28 - TEANO
- 29 - ROCCAMONFINA
- 30 - PIEDIMONTE MATESE
- 31 - ALIFE
- 32 - CAIAZZO
- 33 - MARCIANISE
- AMBITO 1-AVERSA
- AMBITO 2-SAN MARCELLINO
- AMBITO 3-S.M.CAPUA V.
- AMBITO 4-CAPUA
- AMBITO 5-SESSA AURUNCA
- AMBITO 6-CANCELLO ED ARNONE
- PODIDISTRETTO

Caserta Province: buffalo herds distribution with regard to Sanitary status December 31 2008





Allevamenti bufalini provincia di Caserta:  
stato sanitario al 31/12/2009

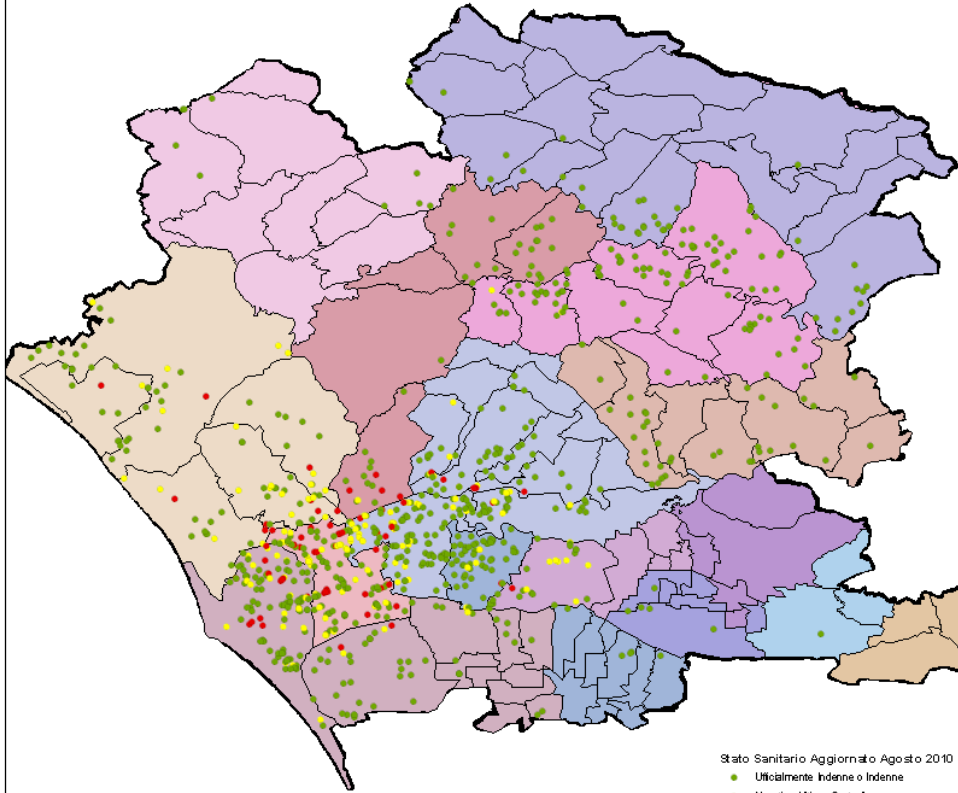


Caserta Province: buffalo  
herds distribution with  
regard to  
Sanitary status  
December 31 2009





Allevamenti bufalini provincia di Caserta:  
stato sanitario al 30/08/2010



Stato Sanitario Aggiornato Agosto 2010

- Ufficialmente Indenne o Indenne
- Negativo Ultimo Controllo
- Positivo Ultimo Controllo

- DISTRETTO
- 25 - CASERTA
  - 26 - ARLENZO
  - 27 - MADDALONI
  - 28 - TEANO
  - 29 - ROCCAMONFINA
  - 30 - PIEDIMONTE MATESE
  - 31 - ALIFE
  - 32 - CAIAZZO
  - 33 - MARCIANISE
- AMBITO
- 1-AVERSA
  - 2-SAN MARCELLINO
  - 3-S.M.CAPUA.V.
  - 4-CAPUA
  - 5-SESSA AURUNCA
  - 6-CANCELLO ED ARNONE

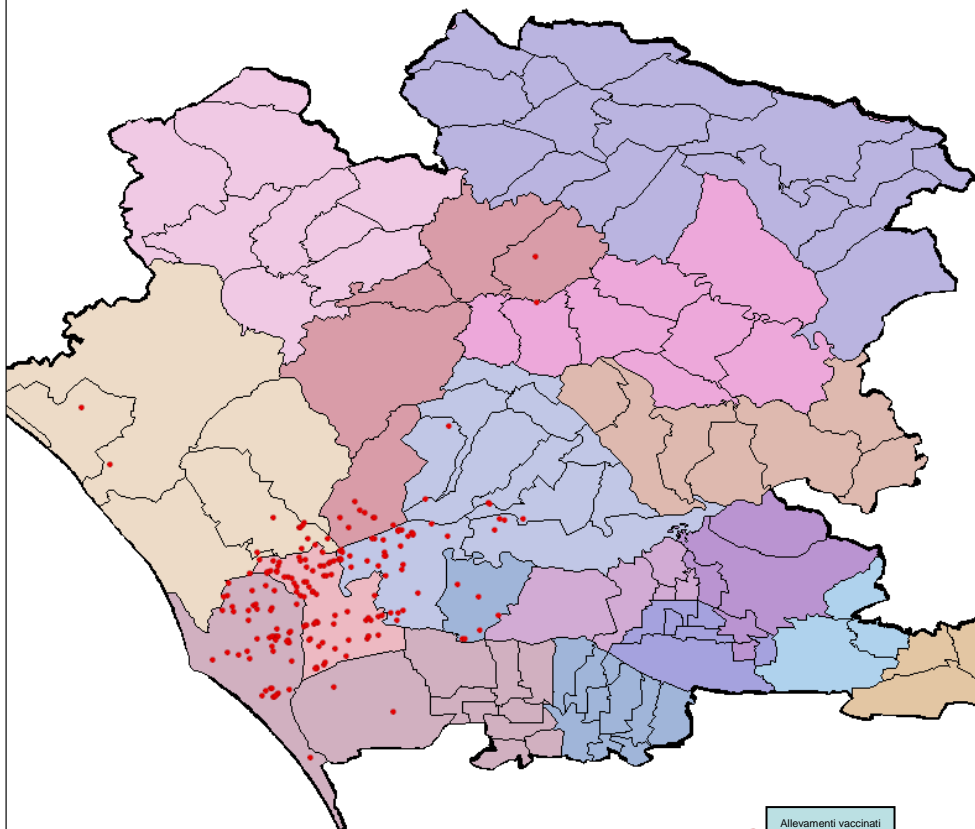


Caserta Province:  
buffalo herds  
distribution with  
regard to  
Sanitary status  
August 30 2010





### Provincia di Caserta: allevamenti vaccinati



- Allevamenti vaccinati
- DISTRETTO
- 25 - CASERTA
  - 26 - ARIENZO
  - 27 - MADDALONI
  - 28 - TEANO
  - 29 - ROCCAMONFINA
  - 30 - PIEDIMONTE MARSESE
  - 31 - ALIFE
  - 32 - CALAZZO
  - 33 - MARCIANISE
- AMBITO 1-AVERSA
- AMBITO 2-SAN MARCELLINO
- AMBITO 3-S.M.CAPUA.V.
- AMBITO 4-CAPUA
- AMBITO 5-SESSA AURUNCA
- AMBITO 6-CANCELLO ED ARNONE



Caserta Province  
buffalo vaccinated  
herds 2008-2010

N vaccinated herds= 197  
N vaccinated animals= 9923



## Caserta Province: tested buffalo herds January-August 2010

ASL	DISTRETTO	N aziende presenti	N aziende controllabili	N aziende testate	N aziende positive	N nuove positive	% Az. Controllate	% az. pos.	% nuove pos
CE 1	27 - MADDALONI	1	1	1	0	0	100,0%	0,0%	0,0%
	28 - TEANO	40	39	39	5	0	100,0%	12,8%	0,0%
	29 - ROCCAMONFINA	10	9	9	0	0	100,0%	0,0%	0,0%
	30 - PIEDIMONTE MATESE	37	37	37	0	0	100,0%	0,0%	0,0%
	31 - ALIFE	97	94	94	1	1	100,0%	1,1%	1,1%
	32 - CAIAZZO	34	33	33	0	0	100,0%	0,0%	0,0%
	33 - MARCIANISE	6	6	6	0	0	100,0%	0,0%	0,0%
<b>Totale CE 1</b>		<b>225</b>	<b>219</b>	<b>219</b>	<b>6</b>	<b>1</b>	<b>100,0%</b>	<b>2,7%</b>	<b>0,5%</b>
CE 2	AMBITO 1-AVERSA	64	64	63	4	1	98,4%	6,3%	1,6%
	AMBITO 2-SAN MARCELLINO	169	168	158	20	3	94,0%	12,7%	1,9%
	AMBITO 3-S.M.CAPUA V.	27	27	24	1	0	88,9%	4,2%	0,0%
	AMBITO 4-CAPUA	209	209	203	31	5	97,1%	15,3%	2,5%
	AMBITO 5-SESSA AURUNCA	93	92	84	14	1	91,3%	16,7%	1,2%
	AMBITO 6-CANCELLO ED ARNONE	129	127	116	28	10	91,3%	24,1%	8,6%
<b>Totale CE2</b>		<b>691</b>	<b>687</b>	<b>648</b>	<b>98</b>	<b>20</b>	<b>94,3%</b>	<b>15,1%</b>	<b>3,1%</b>
<b>TOTALE</b>		<b>916</b>	<b>906</b>	<b>867</b>	<b>104</b>	<b>21</b>	<b>95,7%</b>	<b>12,0%</b>	<b>2,4%</b>



## Caserta Province: tested buffalo heads January-August 2010

ASL	DISTRETTO	N capi presenti	N capi controllabili	N capi testati	N capi positivi	N capi positivi in nuovi focolai	% capi controllati	% capi positivi
CE 1	27 - MADDALONI	105	95	95	0	0	100,0%	0,0%
	28 - TEANO	7.173	6.167	6.167	399	0	100,0%	6,5%
	29 - ROCCAMONFINA	2.895	1.808	1.808	0	0	100,0%	0,0%
	30 - PIEDIMONTE MATESE	8.376	6.975	6.975	0	0	100,0%	0,0%
	31 - ALIFE	15.797	13.712	13.712	2	2	100,0%	0,0%
	32 - CAIAZZO	5.606	4.861	4.861	0	0	100,0%	0,0%
	33 - MARCIANISE	1.168	1.032	1.032	0	0	100,0%	0,0%
<b>Totale CE 1</b>		<b>41.120</b>	<b>34.650</b>	<b>34.650</b>	<b>401</b>	<b>2</b>	<b>100,0%</b>	<b>1,2%</b>
CE 2	AMBITO 1-AVERSA	10.547	9.152	9.079	185	3	99,2%	2,0%
	AMBITO 2-SAN MARCELLINO	32.279	28.499	27.176	546	38	95,4%	2,0%
	AMBITO 3-S.M.CAPUA V.	5.178	4.477	3.987	2	0	89,1%	0,1%
	AMBITO 4-CAPUA	37.358	32.750	31.763	349	42	97,0%	1,1%
	AMBITO 5-SESSA AURUNCA	20.579	17.867	16.410	470	6	91,8%	2,9%
	AMBITO 6-CANCELLO ED ARNONE	25.983	22.372	20.535	822	287	91,8%	4,0%
<b>Totale CE2</b>		<b>131.924</b>	<b>115.117</b>	<b>108.950</b>	<b>2.374</b>	<b>376</b>	<b>94,6%</b>	<b>2,2%</b>
<b>TOTALE</b>		<b>173.044</b>	<b>149.767</b>	<b>143.600</b>	<b>2.775</b>	<b>378</b>	<b>95,9%</b>	<b>1,9%</b>



## Prevalence distribution into herds: expectation to December 2010

