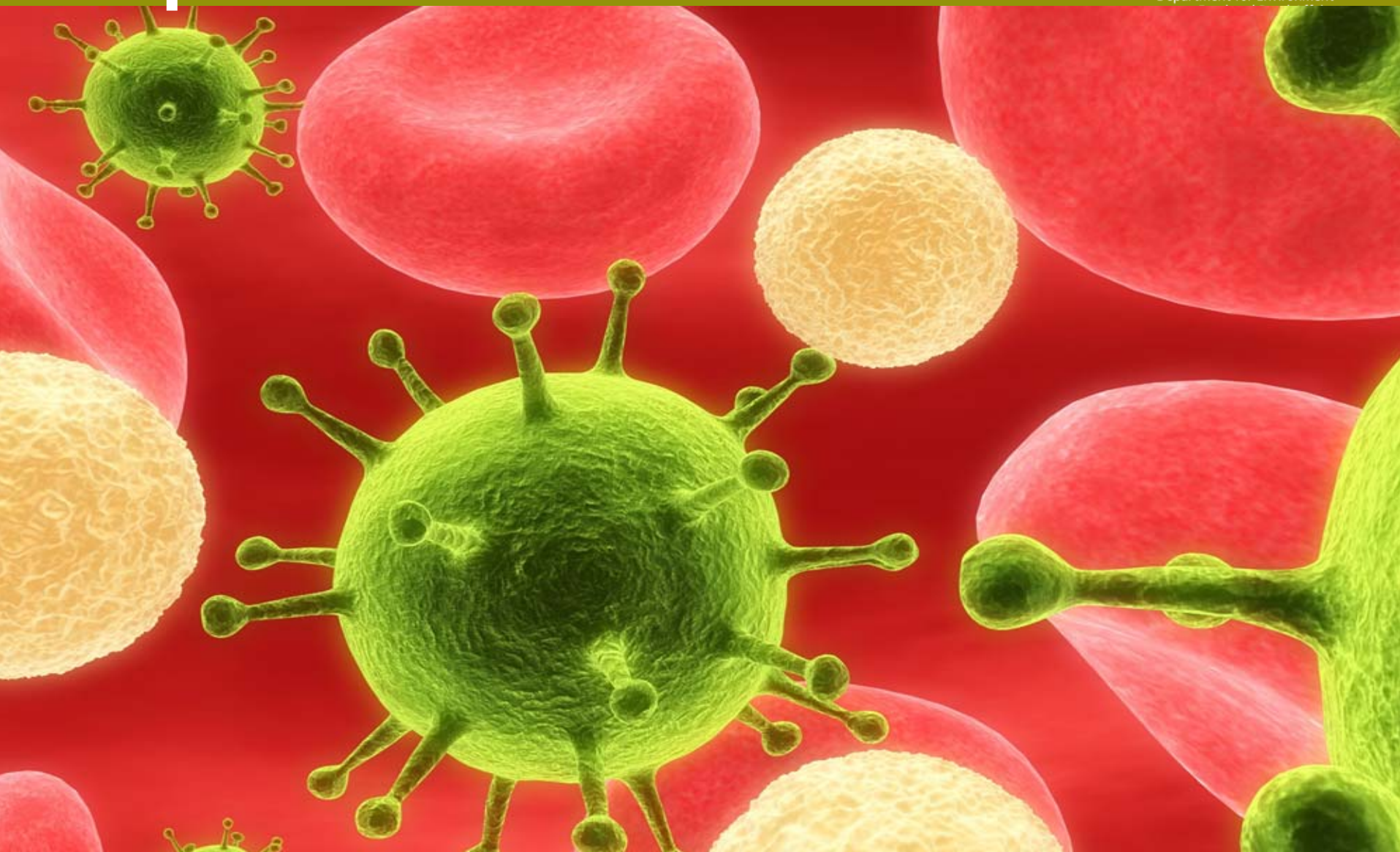


# Schmallenberg virus: Reports in the UK



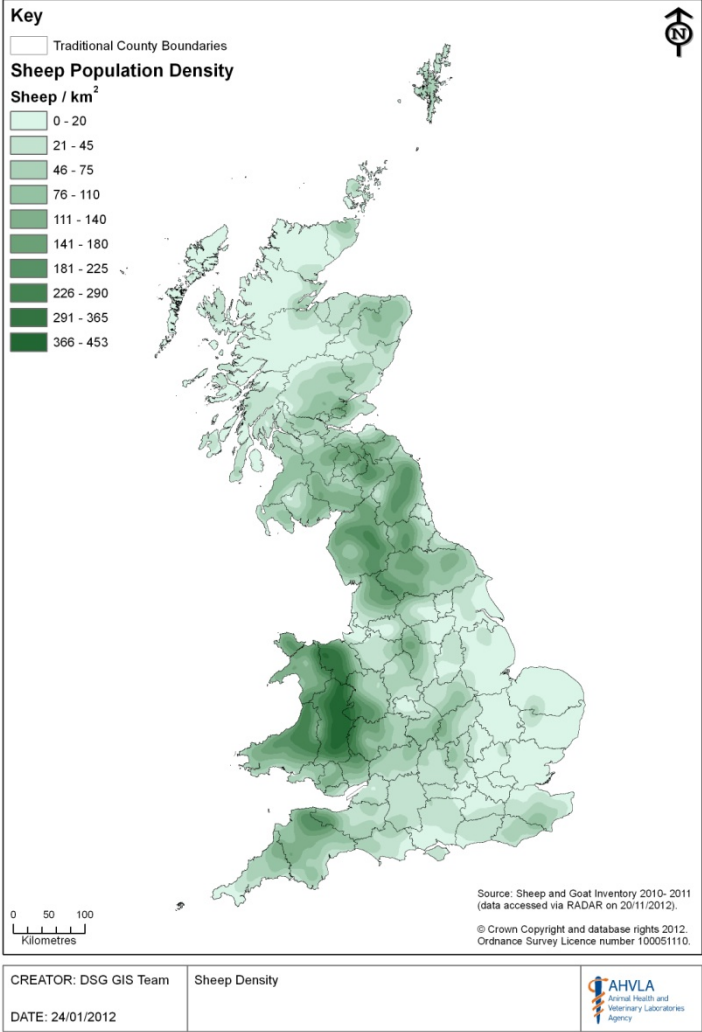
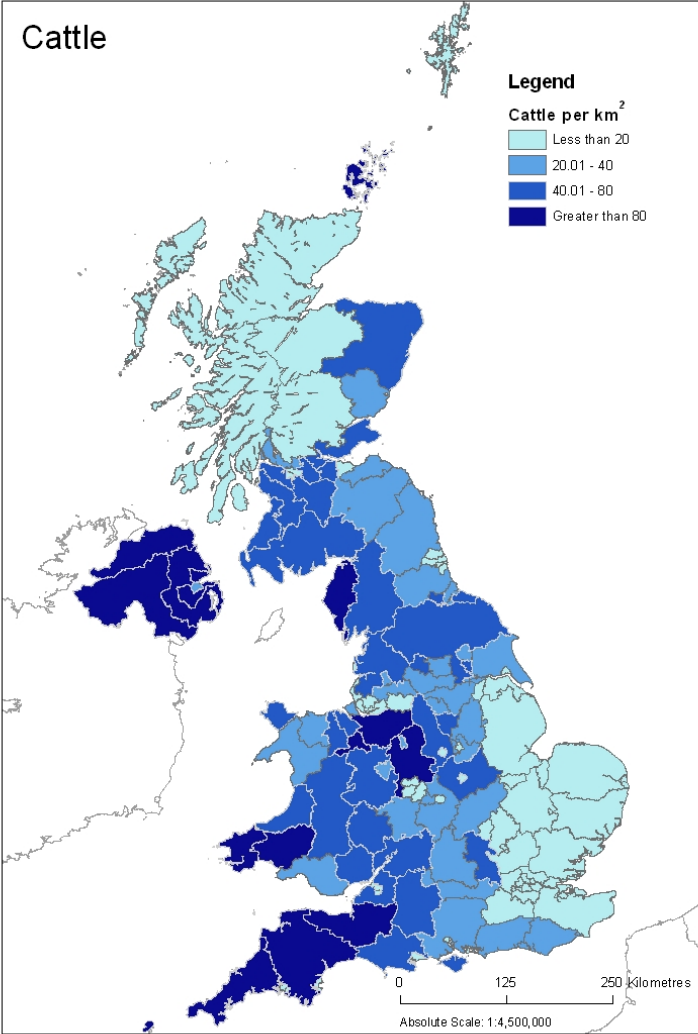
**defra**  
Department for Environment



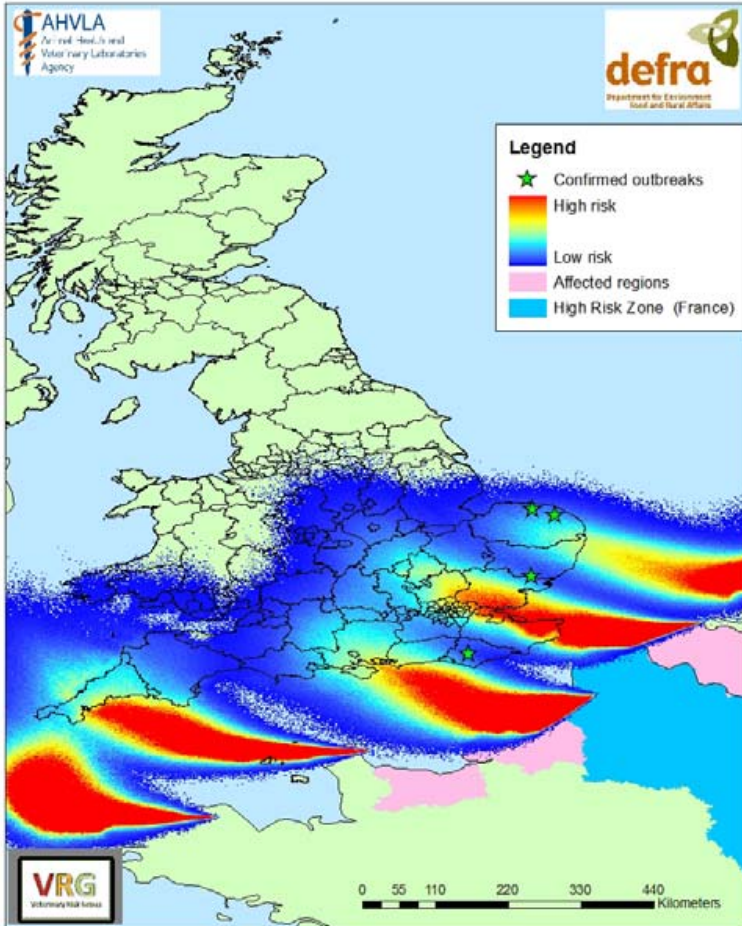
# Timeline of reporting

- Summer 2011 – no clinical signs in cattle or sheep reported in the UK following enhanced surveillance
- November 2011 – Germany reported new orthobunyavirus
- December 2011 – UK published preliminary assessment
  - Information on for abortions, stillbirths and deformities
- January 2012 – vector modelling showed at risk areas
  - Enhanced surveillance for abortions, stillbirths and deformities
  - Updated outbreak assessment
  - 20th January 2012 – first cases reported on UK farms in the at risk area
  - <http://www.defra.gov.uk/animal-diseases/monitoring/>

# UK sheep and cattle population

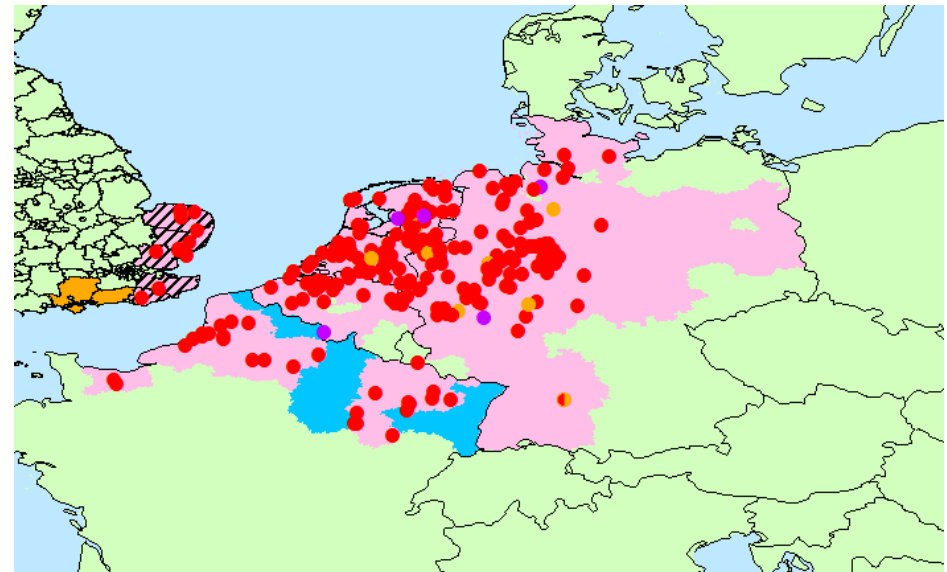


# Modelling of risk area



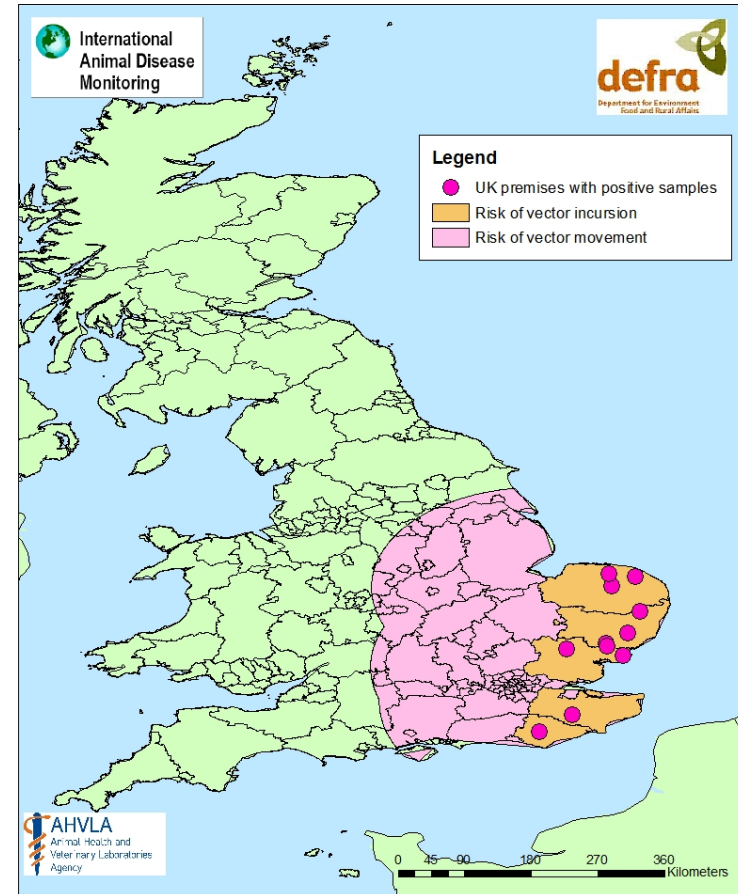
Greatest area put at risk in the UK on a single day between July and November 2011.  
(Note: plumes suitable for vector incursion occurred on less than 20% of days during this period)

- Based on continuous modelling of BTV vectors by wind direction and climate
- Between July and November 2011



# UK reports of confirmed SBV disease

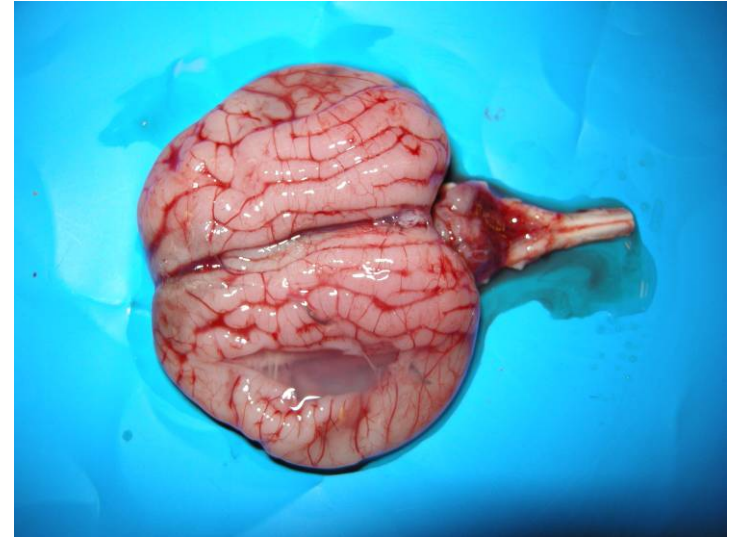
- Based on presence of clinical signs – deformities in newborn or still born lambs
- Confirmation by (FLI) RT-PCR and sequencing



UK outbreaks of SBV: Areas at risk of vector incursion according to met model data and areas at risk of vector movement over land with time



Aborted lamb with deformed limbs (arthrogryposis)



Brain defects from an affected aborted lamb- fluid filled pockets in cerebral hemispheres (hydranencephaly)



Twisted spine from an affected aborted lamb (kyphosis/scoliosis)

- Enhanced surveillance (voluntary)
- Information to farmers and vets
- Public Health surveillance
- Supporting serodiagnostics and research into the virus
- Collaboration with EU Member States, EFSA and European Commission

# Next Steps



- Serology test
- Data collection
- Work on possible economic impacts and distribution of disease
- Additional research on pathogen characterisation
- Shared information with EFSA, Commission and Member States to develop epidemiology reports and risk assessments



**defra**

Department for Environment  
Food and Rural Affairs

**Thank you!**

