



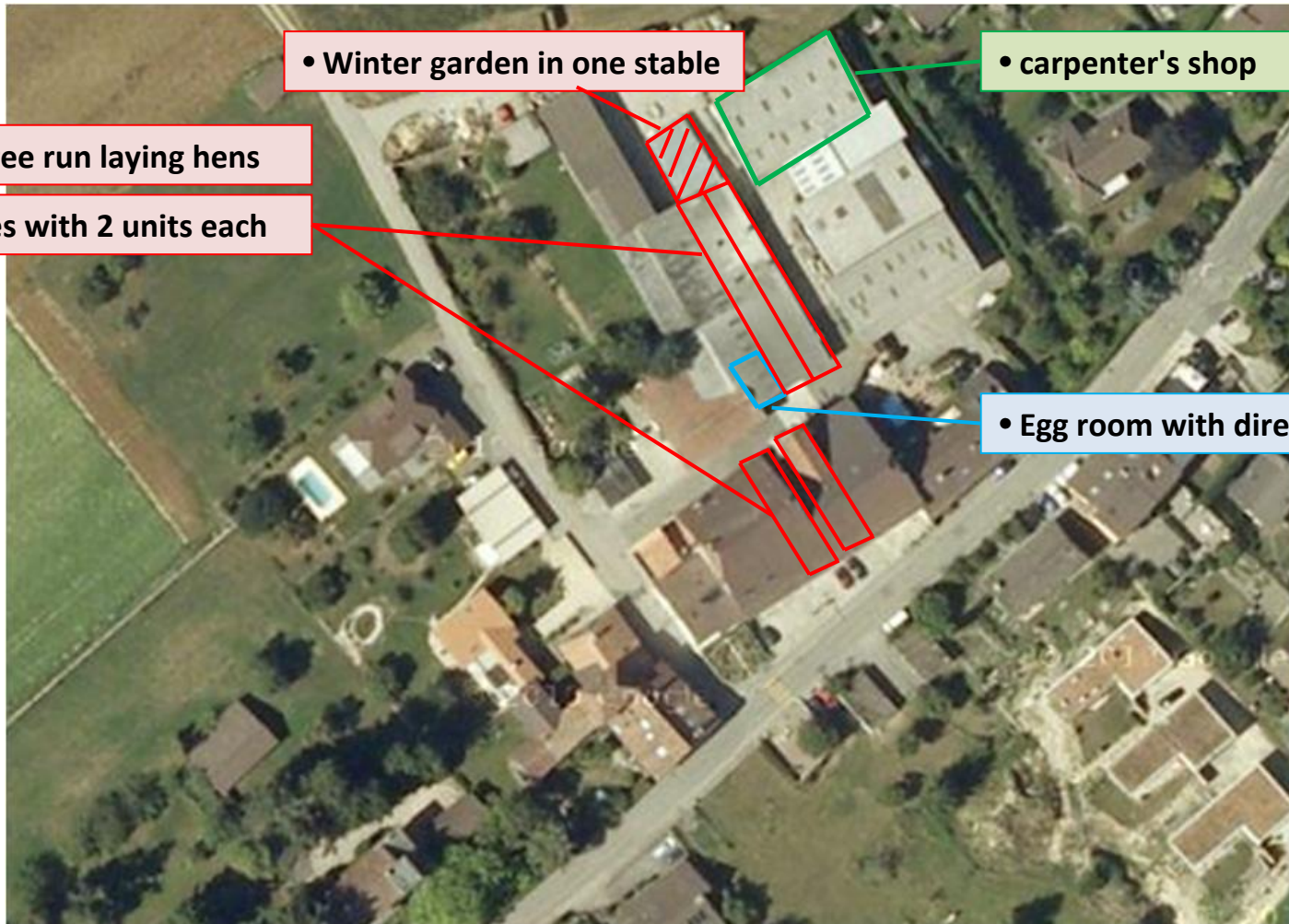
Newcastle Disease in Switzerland

November 2011

- **The farm and its premises**
- **From the first symptoms to the disease confirmation**
- **The emergency procedure and the measures taken**
- **The epidemiological investigation**
- **Lifting the measures and the end of the outbreak**



The farm and its premises



• Winter garden in one stable

• carpenter's shop

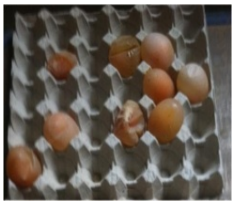
• 5'120 free run laying hens

• 2 stables with 2 units each

• Egg room with direct sale



From the first symptoms to the disease confirmation





From the first symptoms to the disease confirmation

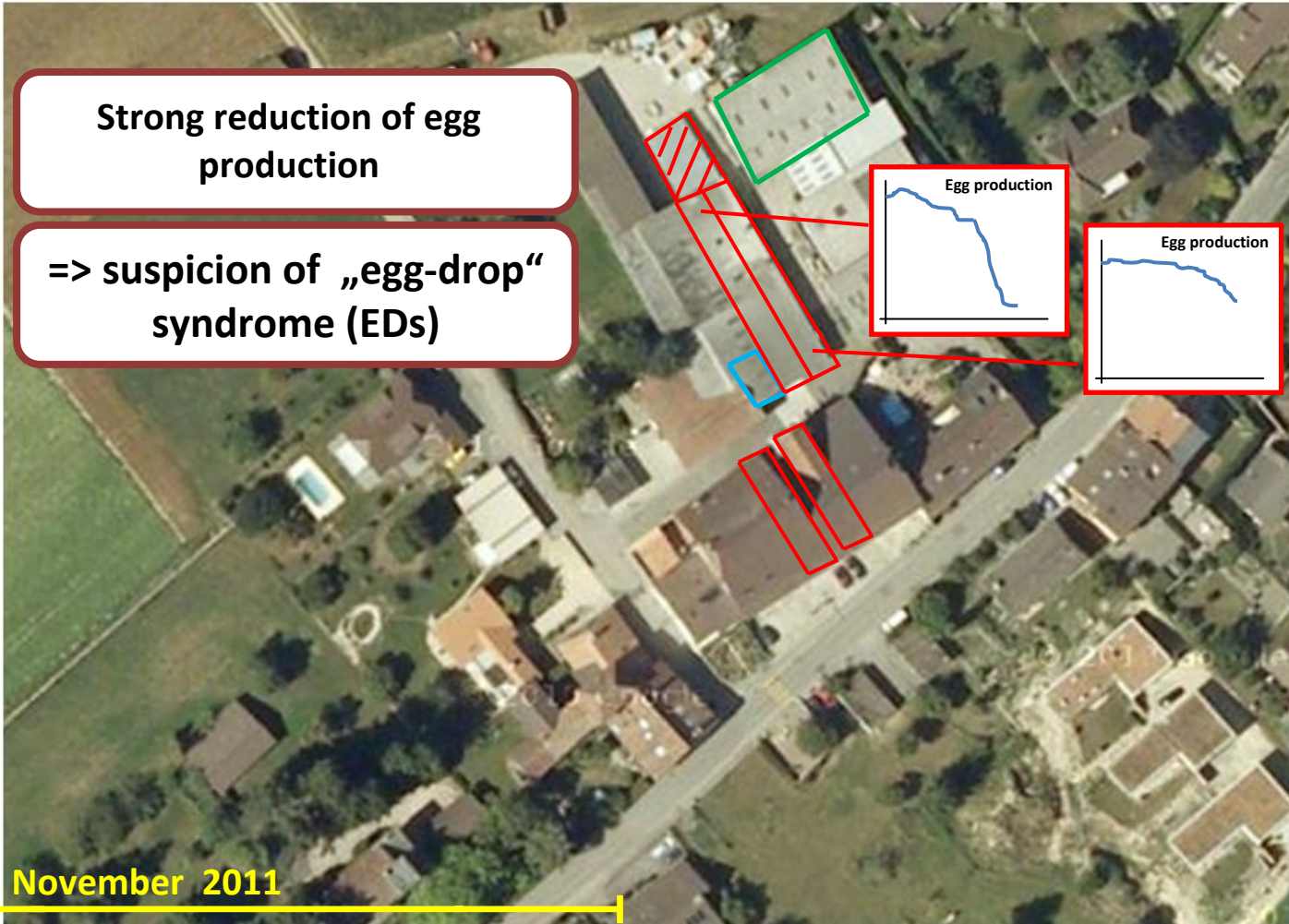
Strong reduction of egg production

=> suspicion of „egg-drop“ syndrome (EDs)

Egg production

Egg production

Timeline **November 2011**



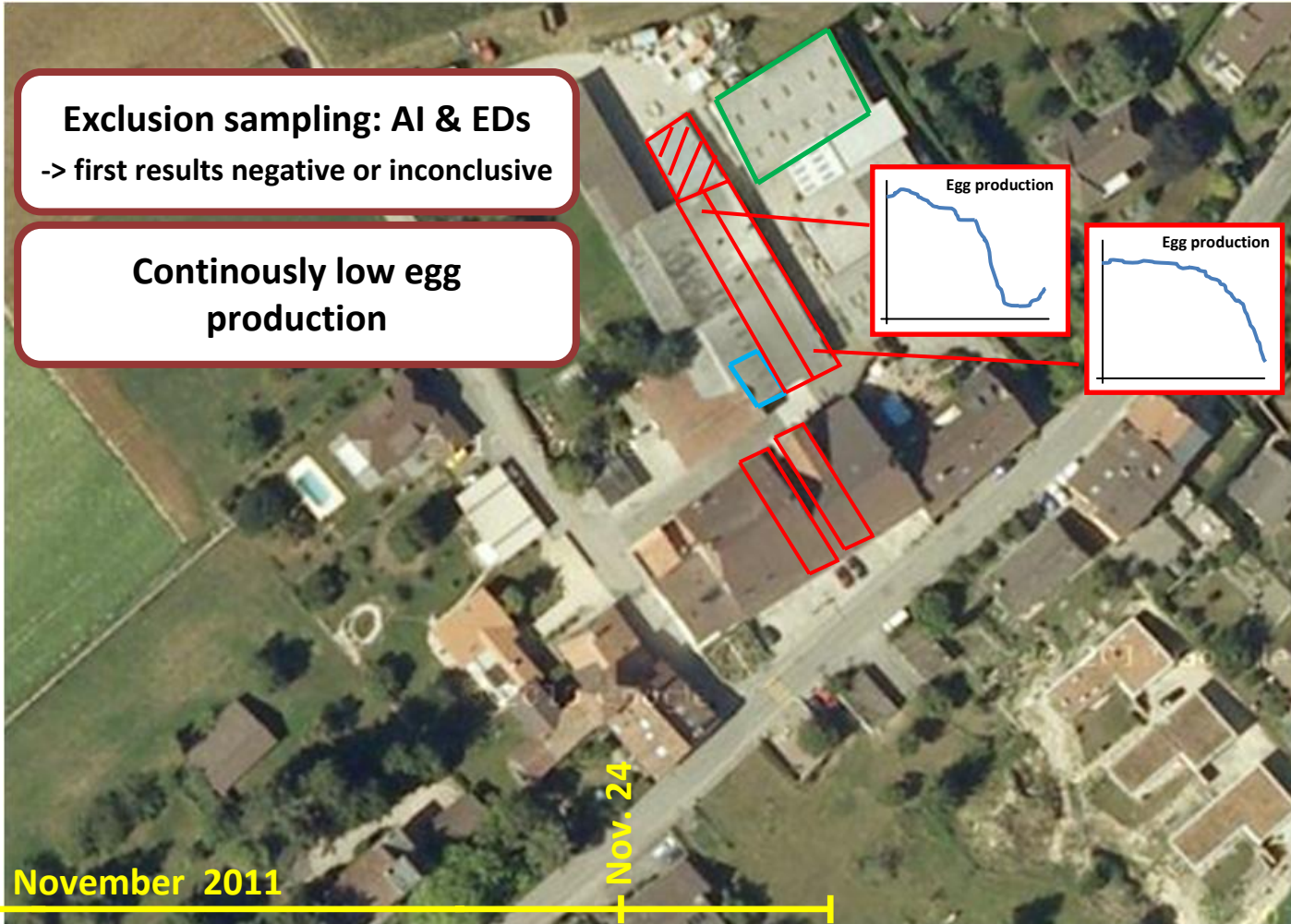
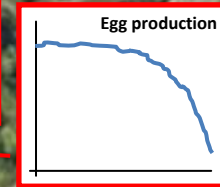


From the first symptoms to the disease confirmation

Nov. 24

Exclusion sampling: AI & EDs
-> first results negative or inconclusive

Continuously low egg production

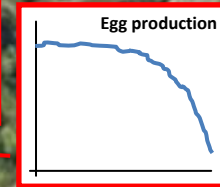




From the first symptoms to the disease confirmation

Nov. 29

**2nd sampling / testing
-> re-testing and pathotyping**



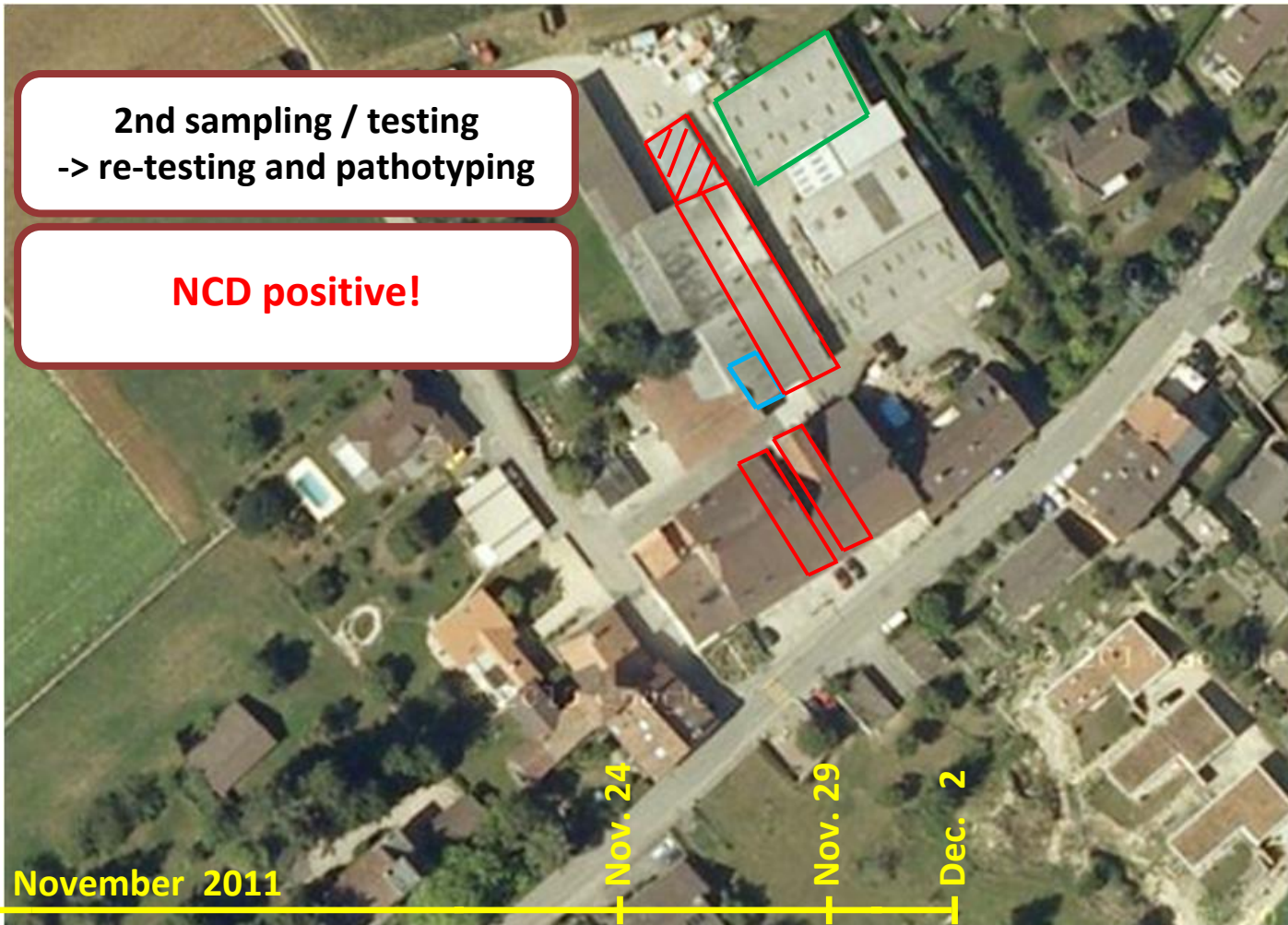


From the first symptoms to the disease confirmation

Dec. 2

2nd sampling / testing
-> re-testing and pathotyping

NCD positive!



Timeline

November 2011

Nov. 24

Nov. 29

Dec. 2



The emergency procedure and the measures taken

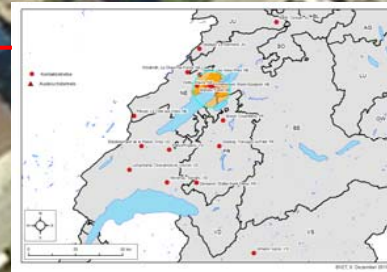
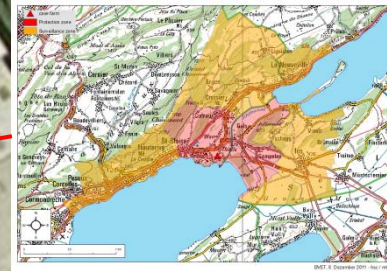
Dec. 2

Official reinforced ban on the farm

Declaration of protection and surveillance zones

Establishing the list of contact farms
17 farms through egg commerce
4 farms through diff. (indirect) contacts
Hatchery and breeding farm of origin

Communication in Switzerland and notification to ADNS and OIE



Location of the 17 egg contact farms

Nov. 10, 2017

Nov. 20

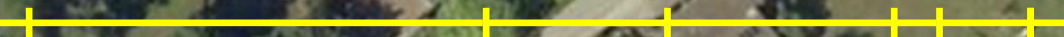
Nov. 24

Nov. 29

Nov. 30

Dec. 2

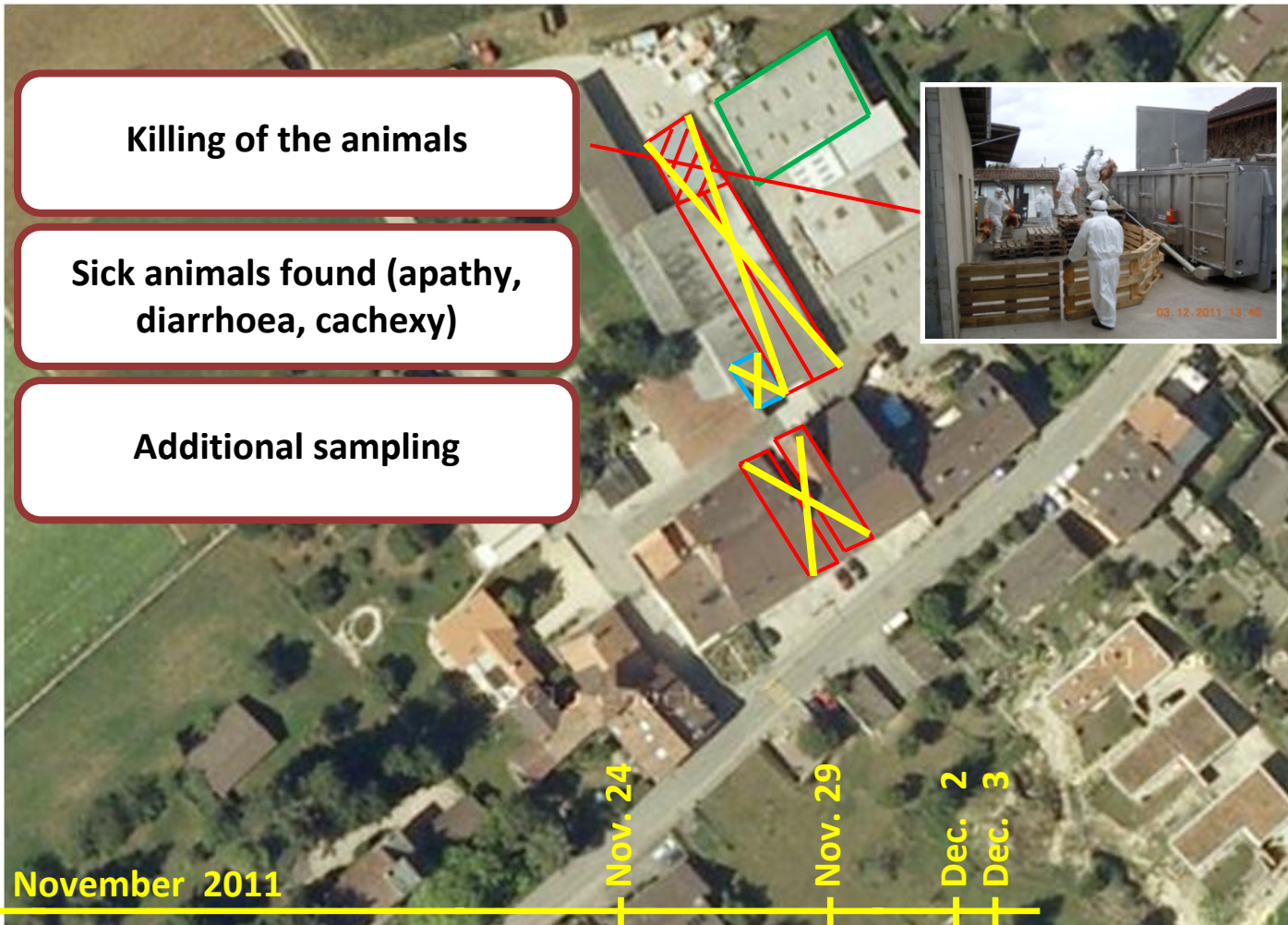
Timeline





The emergency procedure and the measures taken

Dec. 3



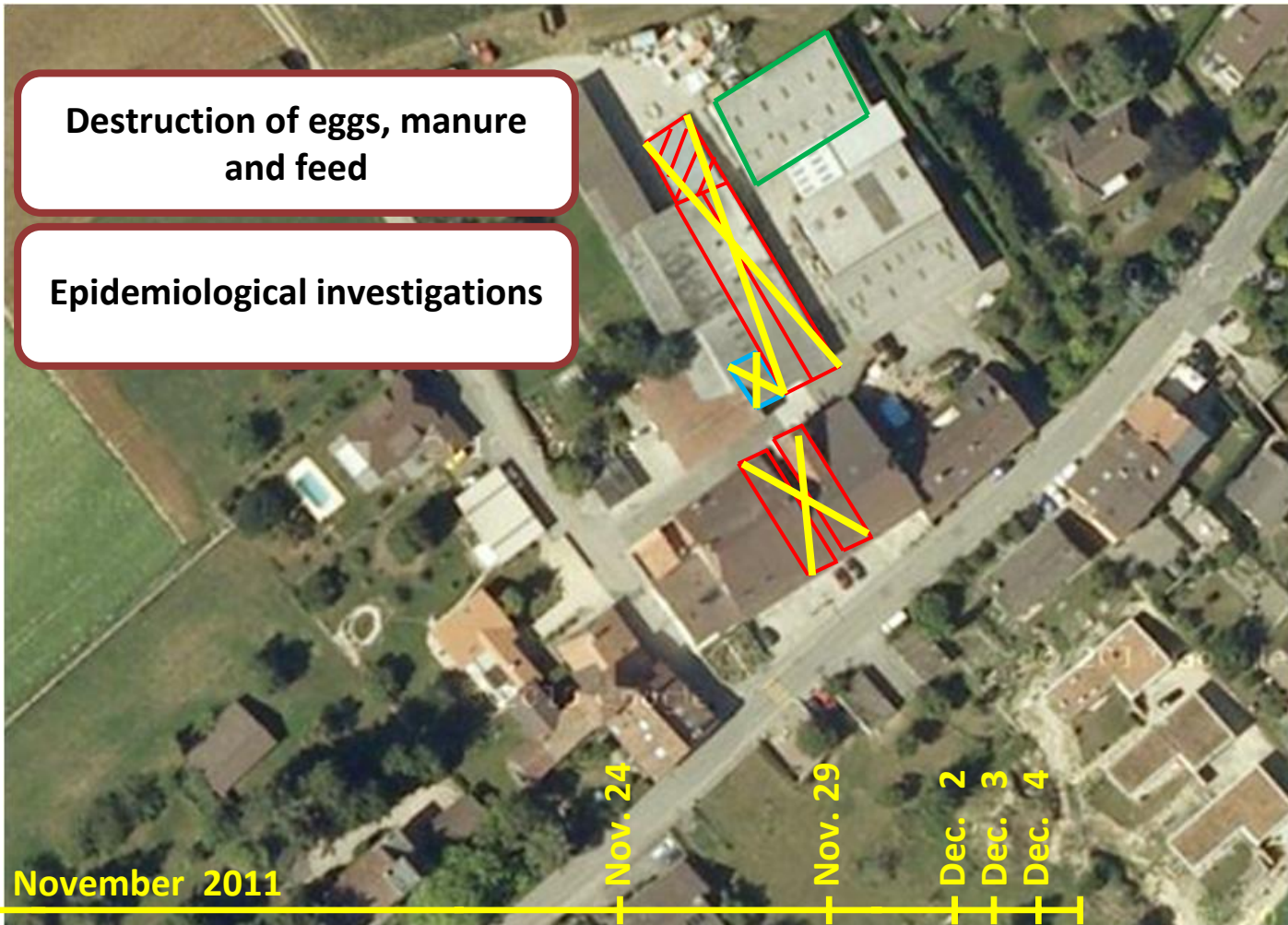


The emergency procedure and the measures taken

Dec. 4

**Destruction of eggs, manure
and feed**

Epidemiological investigations





The emergency procedure and the measures taken

Dec. 4

**Destruction of eggs, manure
and feed**

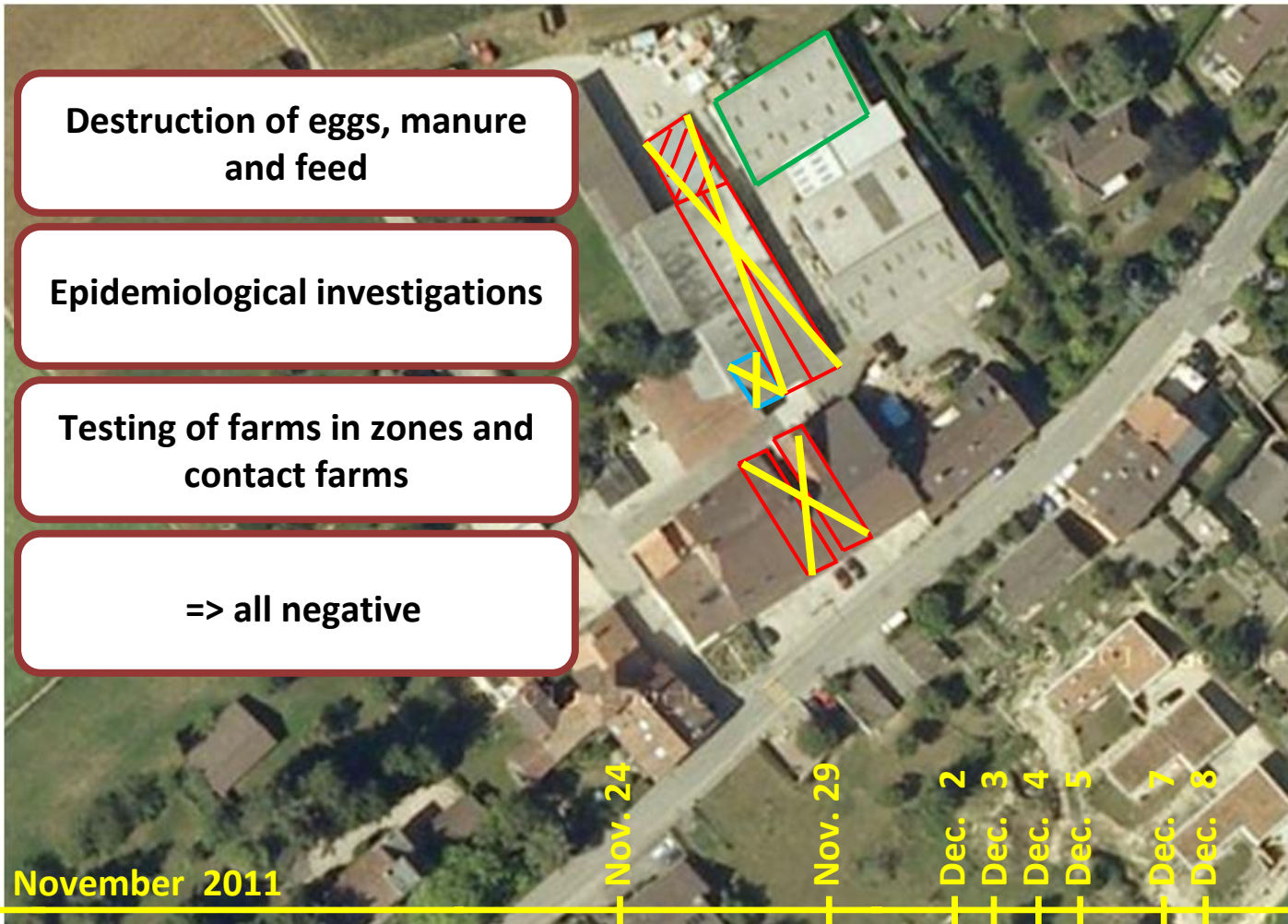
Epidemiological investigations

Dec. 5

**Testing of farms in zones and
contact farms**

Dec. 8-

=> all negative



Timeline

November 2011

Nov. 24

Nov. 29

Dec. 2

Dec. 3

Dec. 4

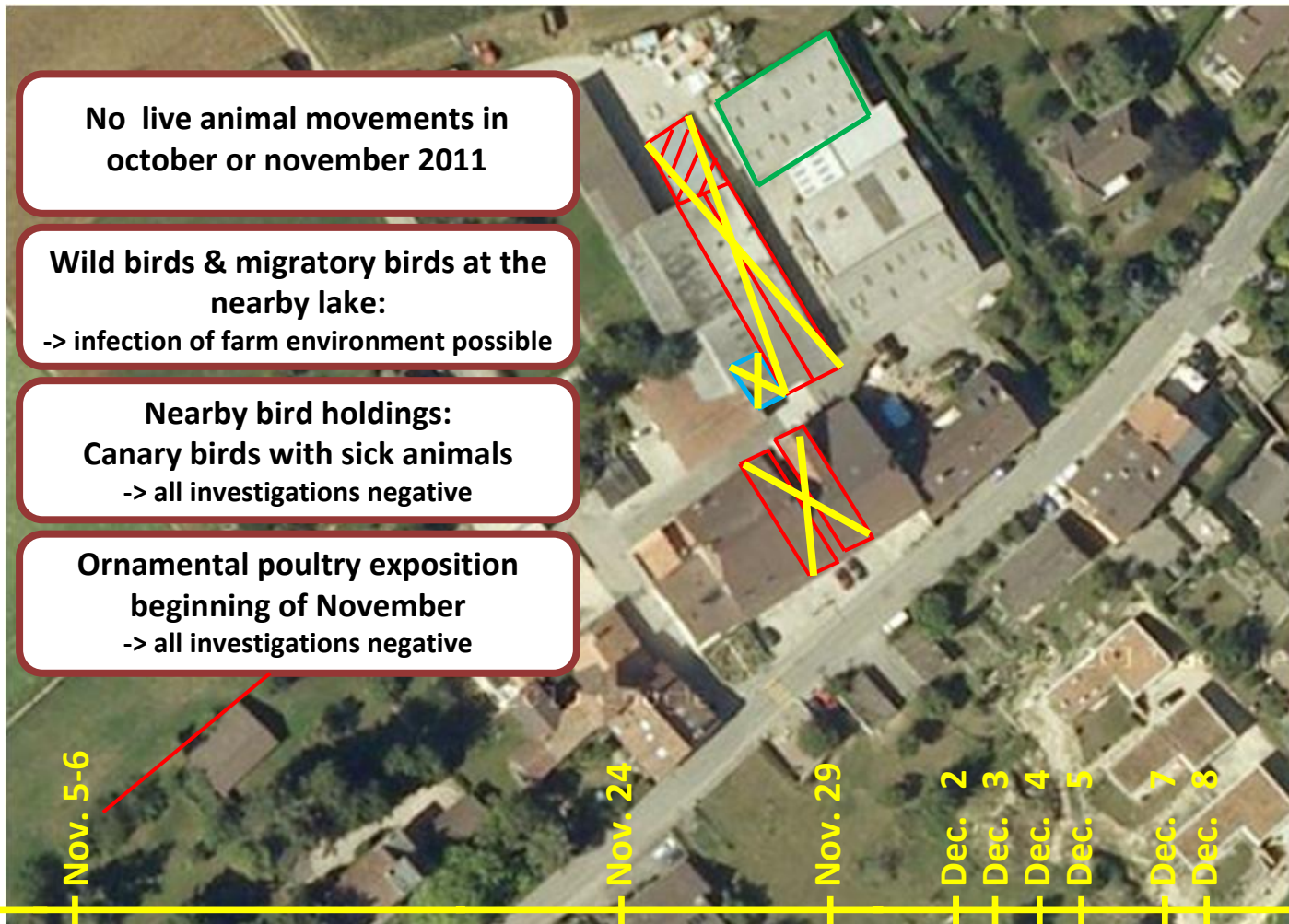
Dec. 5

Dec. 7

Dec. 8

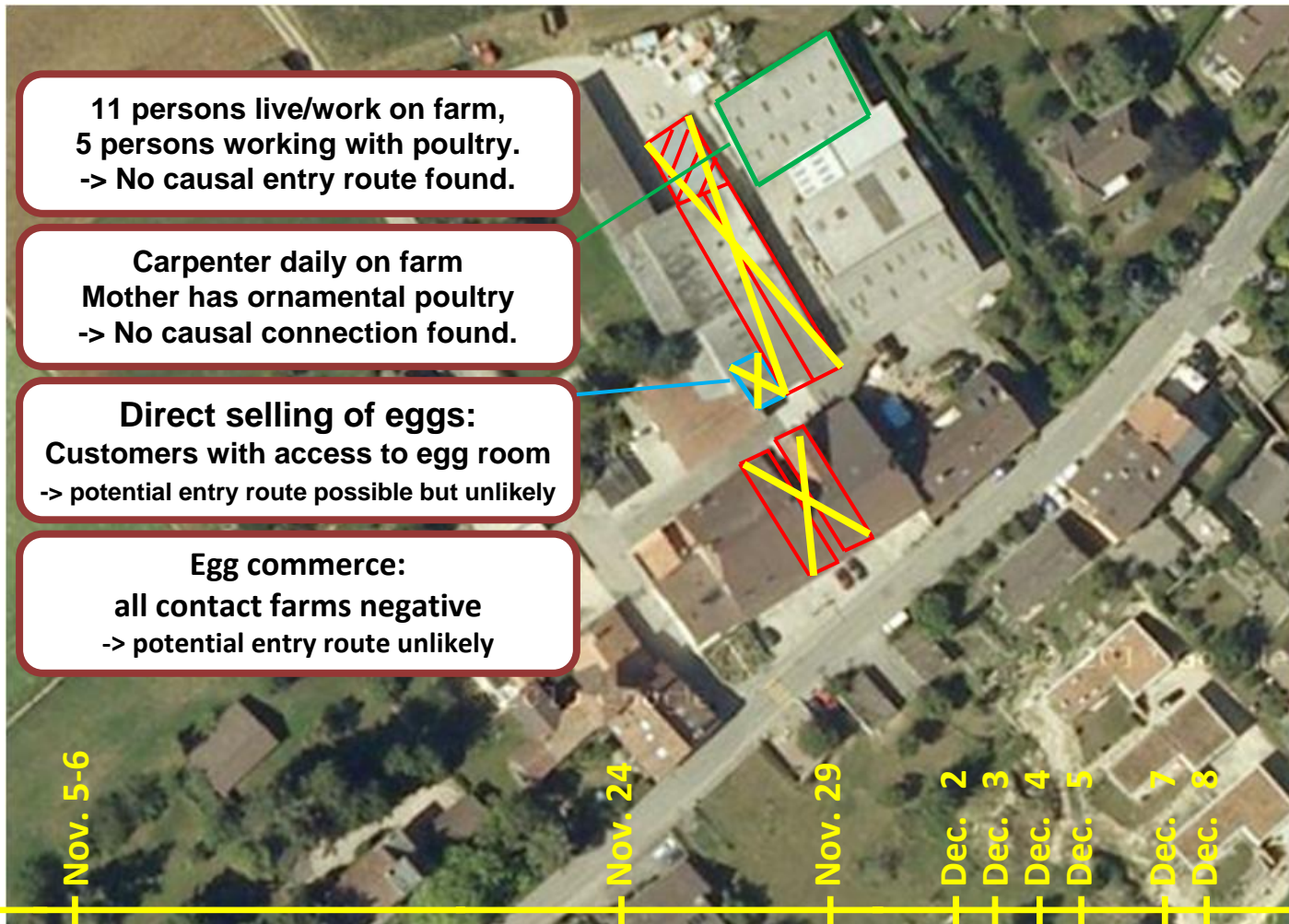


The epidemiological investigation





The epidemiological investigation





Lifting the measures and the end of the outbreak

No further cases found

**No export of poultry or
eggs from zones**

**Origin of virus still
unknown**

**Measures lifted in zones
on Dec. 27th 2011**

**Measures lifted on
farm on Jan. 10th 2012**

