



MINISTERIO
DE MEDIO AMBIENTE
Y MEDIO RURAL Y MARINO

EVOLUTION OF THE NATIONAL ERADICATION PROGRAMME ON BOVINE TB 2010 IN SPAIN



Brussels, 5-6th July 2011



MINISTERIO
DE MEDIO AMBIENTE
Y MEDIO RURAL Y MARINO

National Eradication Programme 2007-2010

Goal: Eradication of the disease in bovine herds

Main tool: to increase the sensitivity of diagnostic in high prevalence areas



MINISTERIO
DE MEDIO AMBIENTE
Y MEDIO RURAL Y MARINO

PROGRAM 2010

1. CCAA low prevalence (<1%)
single and/or comparative skin test
(epidemiological units “free”)





2. CCAA high prevalence (>1%)

- herds OTF: single skin test with severe interpretation
 UVLs >3%: 2 test by year in T3 herds
- herds T2: at least 3 test by year
 single skin test with severe interpretation

INCREASE SENSITIVITY AT HERD LEVEL
SANCO/10200/2006 “**severe interpretation
of tuberculin test in high prevalence
areas**”



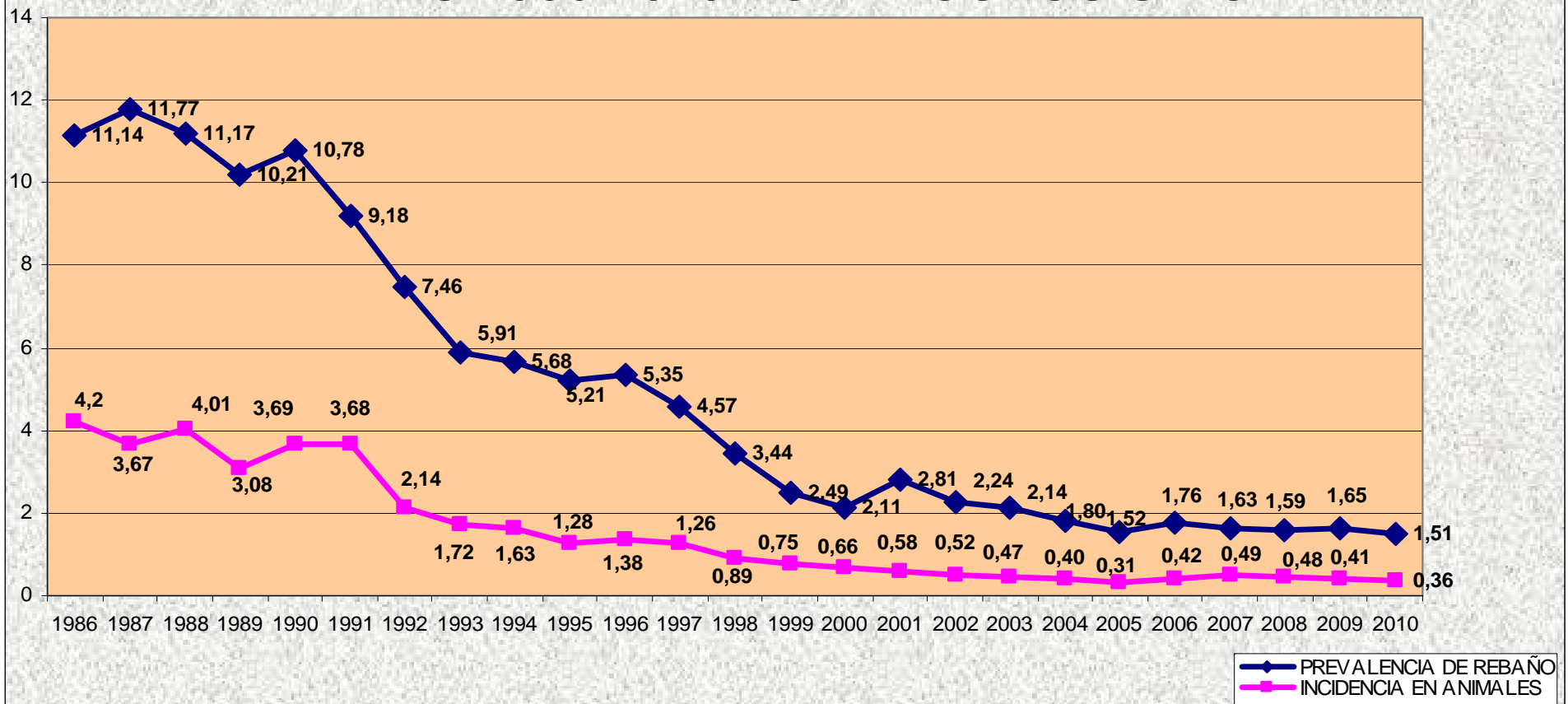
OTHERS MEASURES

- **Strategic use of gamma-INF assay (UVLs > 1%)
181.000 test in 2010**
- **Pre-movement test: more than 112.000**
- **Official controls on field teams: 866**



Evolution: herd prevalence and animal incidence

PREVALENCIA DE REBAÑO E INCIDENCIA EN ANIMALES 1986-2010 TUBERCULOSIS BOVINA



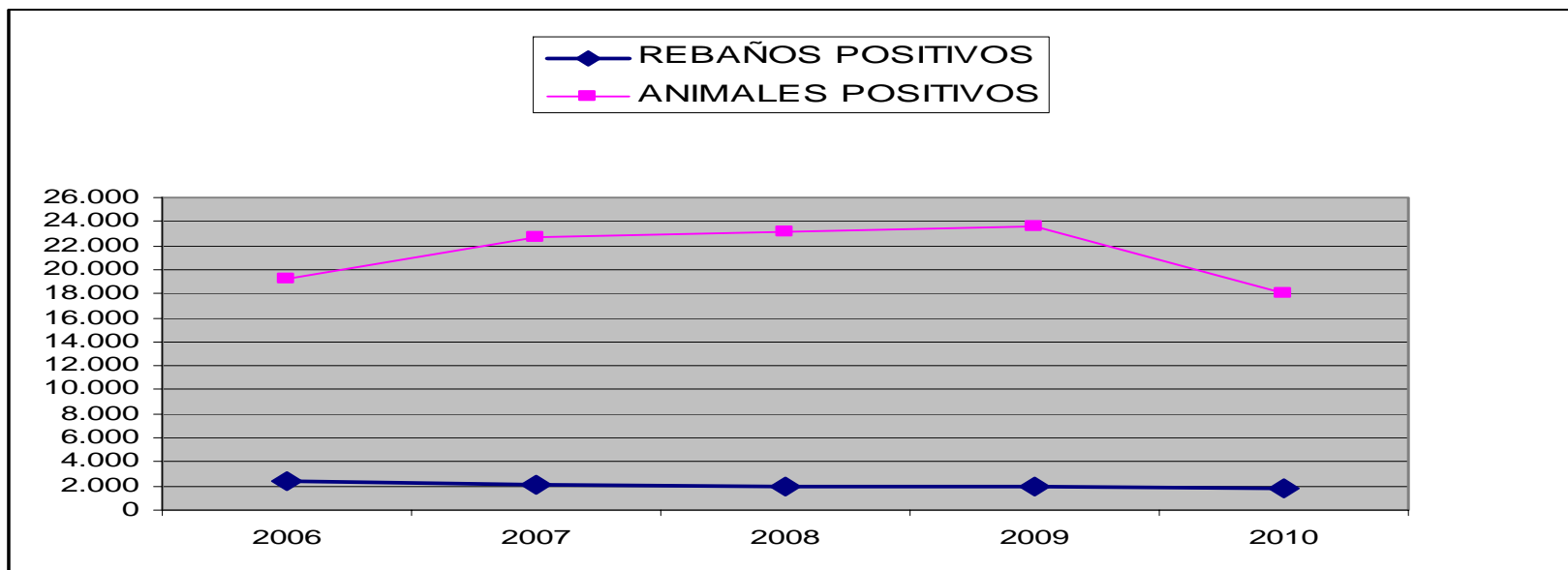


Investigation herds and animals in 2010

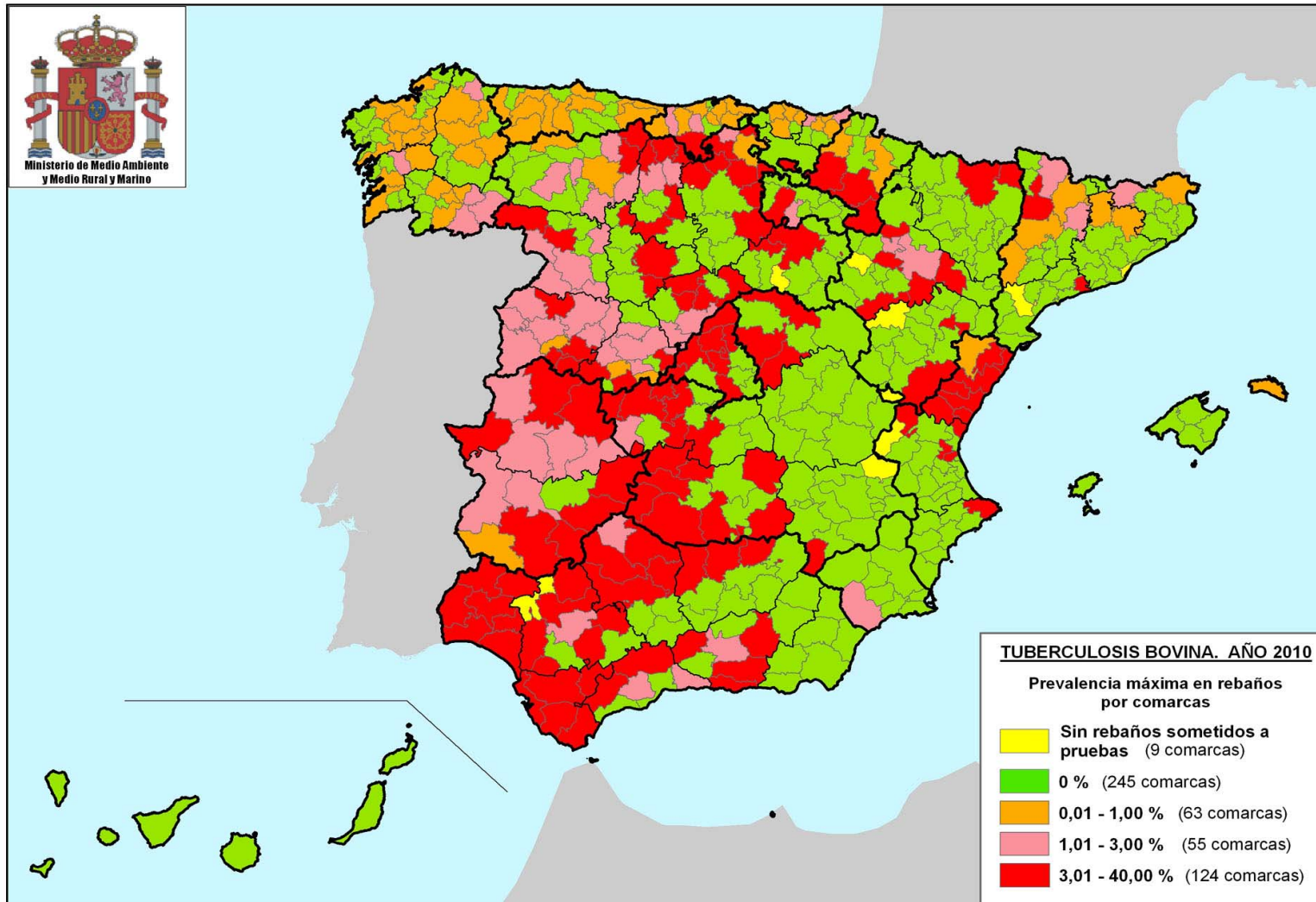
	HERDS	ANIMALS
Investigated	116.399	5.043.219
Positive	1.755	18.073
Prevalence	1,51%	0,36%

Evolution positive herds and animals in 2010

Año	REBAÑOS			ANIMALES		
	Investigados	Positivos	Prevalencia (%)	Investigados	Positivos	Incidencia (%)
2005	142.840	2.168	1,52	4.690.709	14.481	0,31
2006	136.922	2.408	1,76	4.594.603	19.194	0,42
2007	130.063	2.121	1,63	4.655.658	22.755	0,49
2008	124.956	1.984	1,59	4.873.183	23.171	0,48
2009	119.664	1.970	1,65	5.689.533	23.549	0,41
2010	116.399	1.755	1,51	5.043.219	18.073	0,36



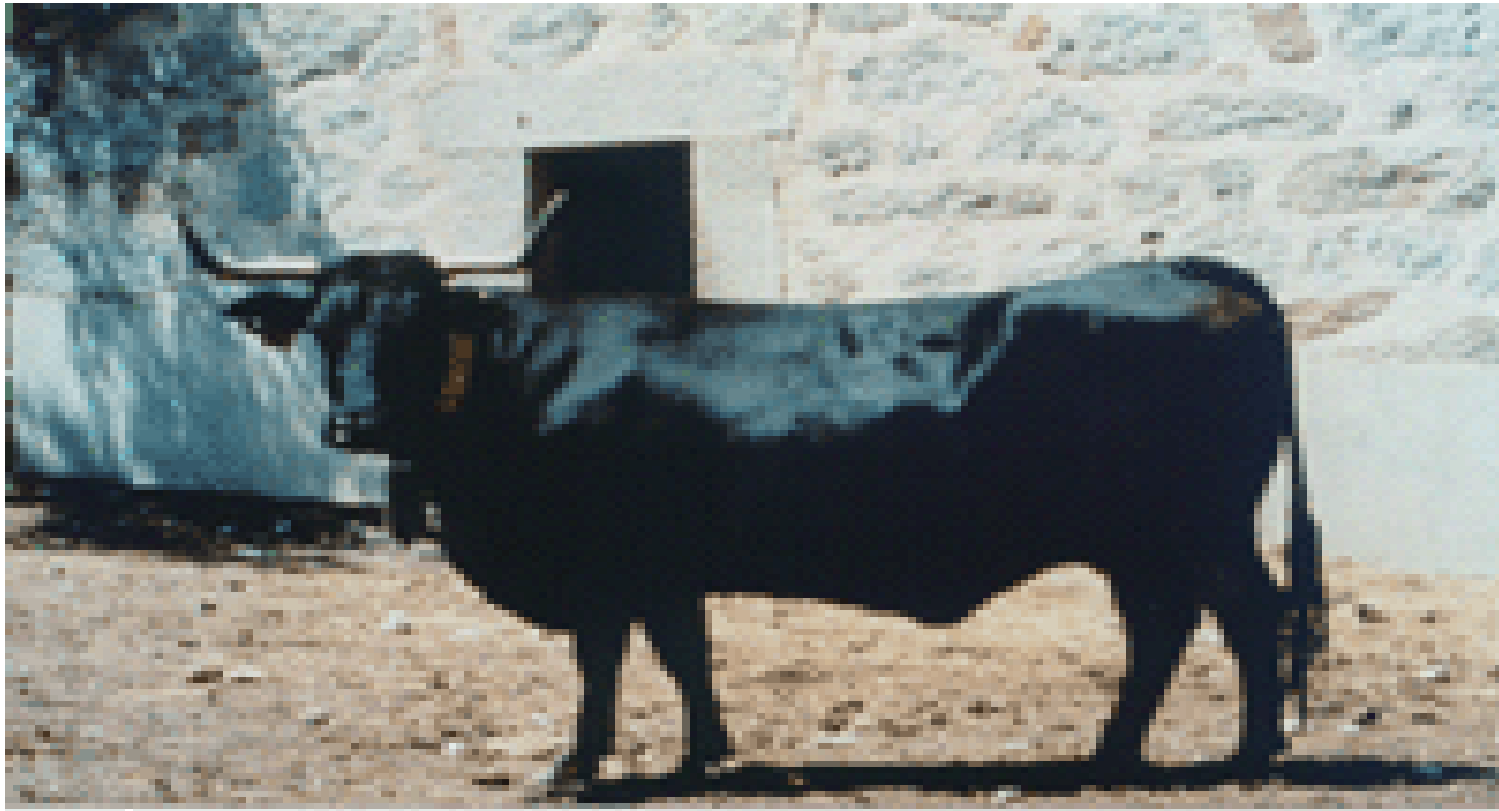
Local Veterinary Unit prevalence





Conclusions

- **In 2010 decrease (no significative) of the herd prevalence.**
- **Moderate level of decrease in the animal incidence, in spite of the high number of gamma-INF test performed**
- **A epidemiological study of risk factors in high prevalence areas on-going (type of field team; density of wild animals; density of goats; herd size; herd type; age of the animals...)**



Thank you