



MINISTERIO  
DE MEDIO AMBIENTE  
Y MEDIO RURAL Y MARINO

# WEST NILE SITUATION IN SPAIN 2010-2011



©1999 Richard C. Russell

SCFCAH , 4-5 October 2011

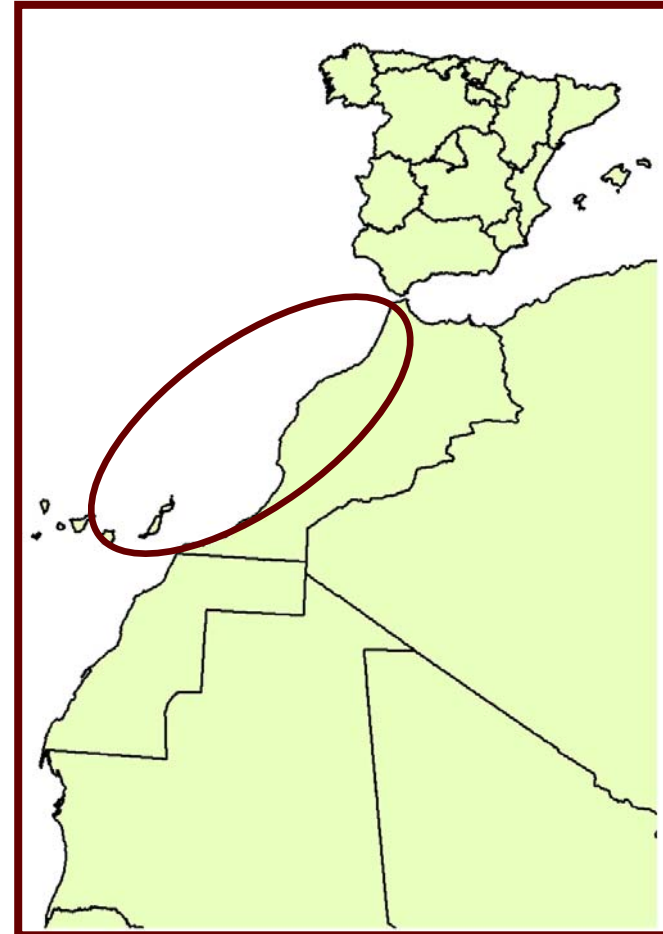


## WEST NILE IN SPAIN 2010 (I)

Notified outbreaks in Morocco  
in August 2010



Surveillance reinforcement in  
Spain





## WEST NILE IN SPAIN 2010 (II)

- Primary outbreak  
(clinical suspicion in  
horses): Jerez de la  
Frontera, Campiña.  
CÁDIZ

10/9/2010

- Diagnostic:
  - IgM ELISA
  - RT-PCR



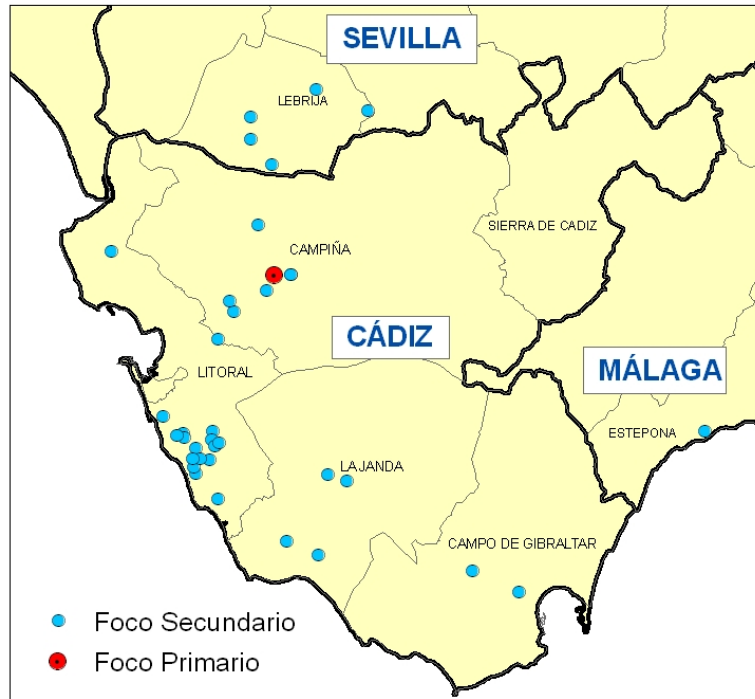


# WEST NILE IN SPAIN 2010 (III)

## Focos Fiebre del Nilo Occidental. 15 de enero 2011



Provincia	Total
Cádiz	30
Málaga	1
Sevilla	5
<b>Total</b>	<b>36</b>



■ 2 cases in humans (CÁDIZ)

	OUTBREAK	PROVINCE
SEPTEMBER	16	CADIZ
OCTOBER	15	CADIZ, MALAGA, SEVILLA
NOVEMBER	4	CADIZ
DECEMBER	1	SEVILLA

SUSCEPTIBLE ANIMALS (horses)	AFFECTED ANIMALS	DEAD ANIMALS
1001	45	8



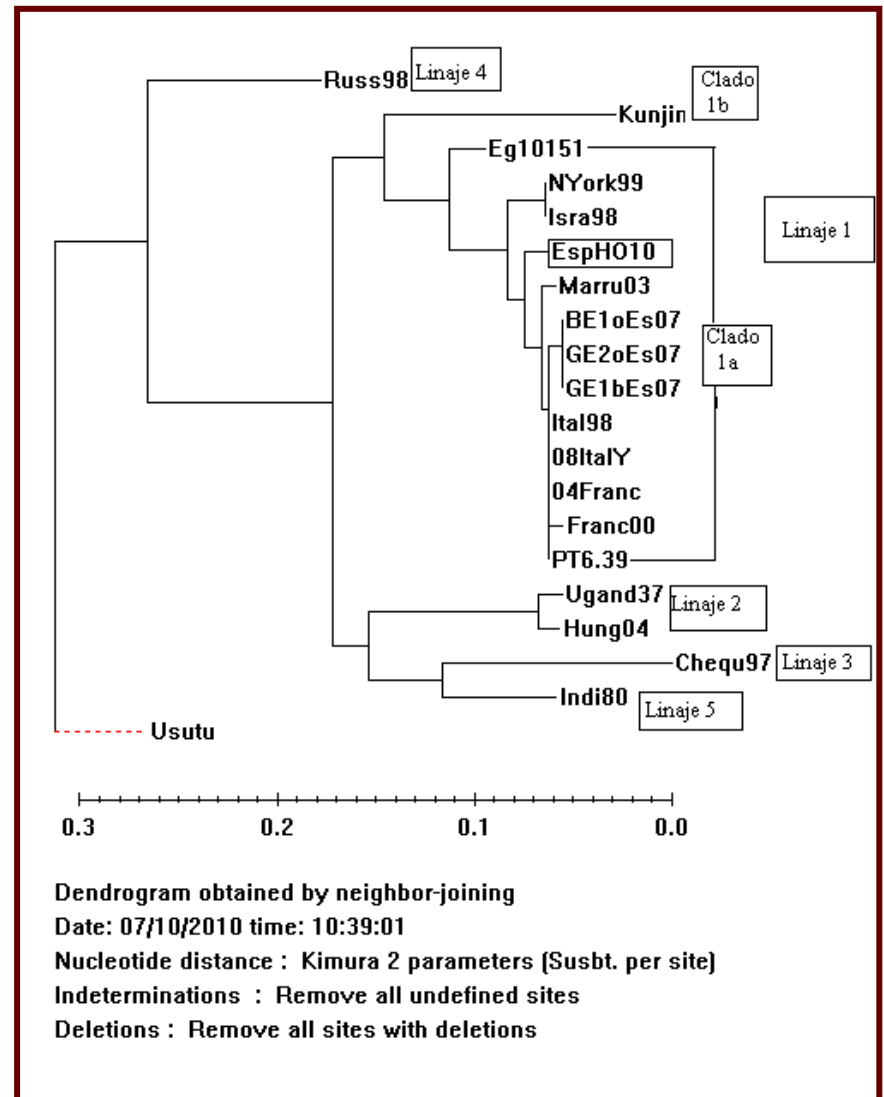
# WEST NILE IN SPAIN 2010 (IV)

Spain 2010

Lineage 1

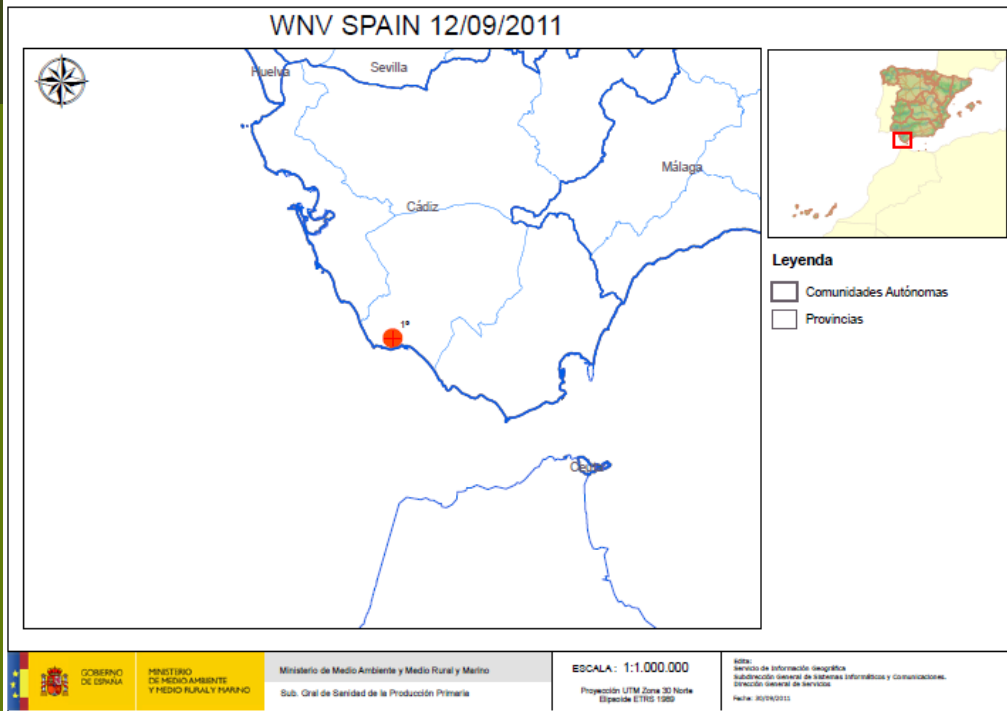


Relation to strains  
from: France, Italy,  
Portugal and Morocco  
(2003-2009)





# WEST NILE IN SPAIN 2011 (I)



- Primary outbreak (clinical suspicion in 3 horses):  
Barbate, La Janda. CÁDIZ
- 12/9/2011
- Diagnostic:
  - IgM ELISA

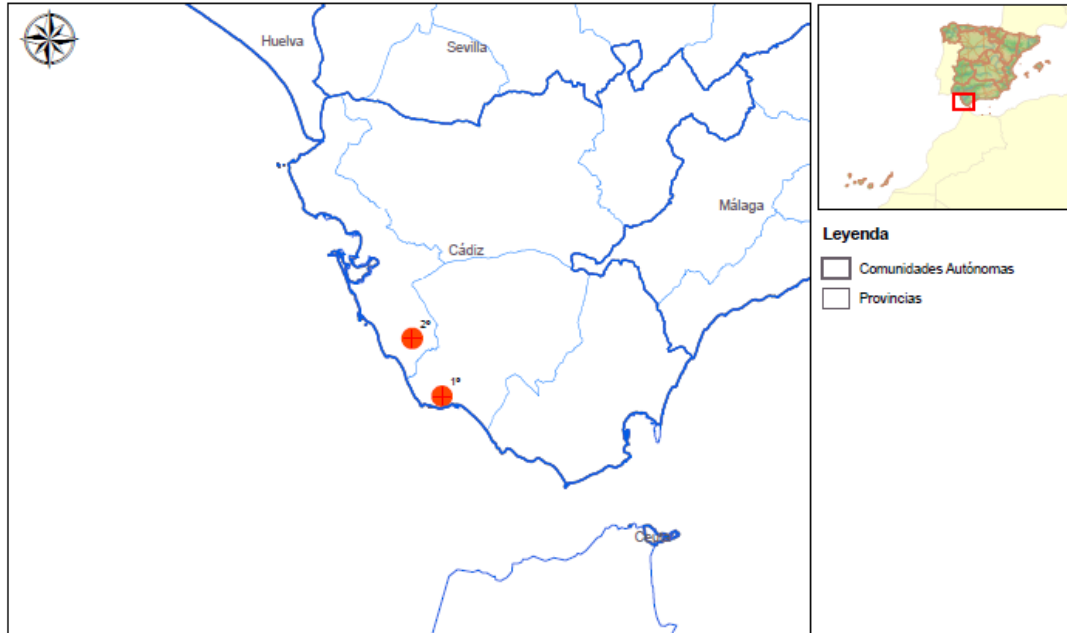


SUSCEPTIBLE ANIMALS	AFFECTED ANIMALS	DEAD ANIMALS
31	3	0



# WEST NILE IN SPAIN 2011 (II)

WNV SPAIN 30/09/2011



- Primary outbreak (clinical suspicion in 3 horses):  
Barbate, La Janda. CÁDIZ
- 12/9/2011
- Diagnostic:
  - IgM ELISA



- 1 Secondary outbreak:  
Conil de la Frontera.  
CÁDIZ
- 30/9/2011
- Diagnostic:
  - IgM ELISA

SUSCEPTIBLE ANIMALS  
(horses)

2

AFFECTED ANIMALS

1

DEAD ANIMALS

1



## WEST NILE IN SPAIN: IMPLEMENTED MEASURES

- ❑ Epidemiological research.
- ❑ Census of horses on farms and clinical examination.
- ❑ Vector control.
- ❑ Collaboration and Communication with Public Health Authorities.
- ❑ Surveillance reinforcement of nearby horse holdings and wildlife.
- ❑ No movement restrictions.
- ❑ Voluntary application of inactivated vaccine on horses (authorized by EU)



MINISTERIO  
DE MEDIO AMBIENTE  
Y MEDIO RURAL Y MARINO

MINISTRY OF ENVIRONMENT, RURAL  
AND MARINE AFFAIRS (SPAIN)  
Animal Health Department  
[sganimal@marm.es](mailto:sganimal@marm.es)

