

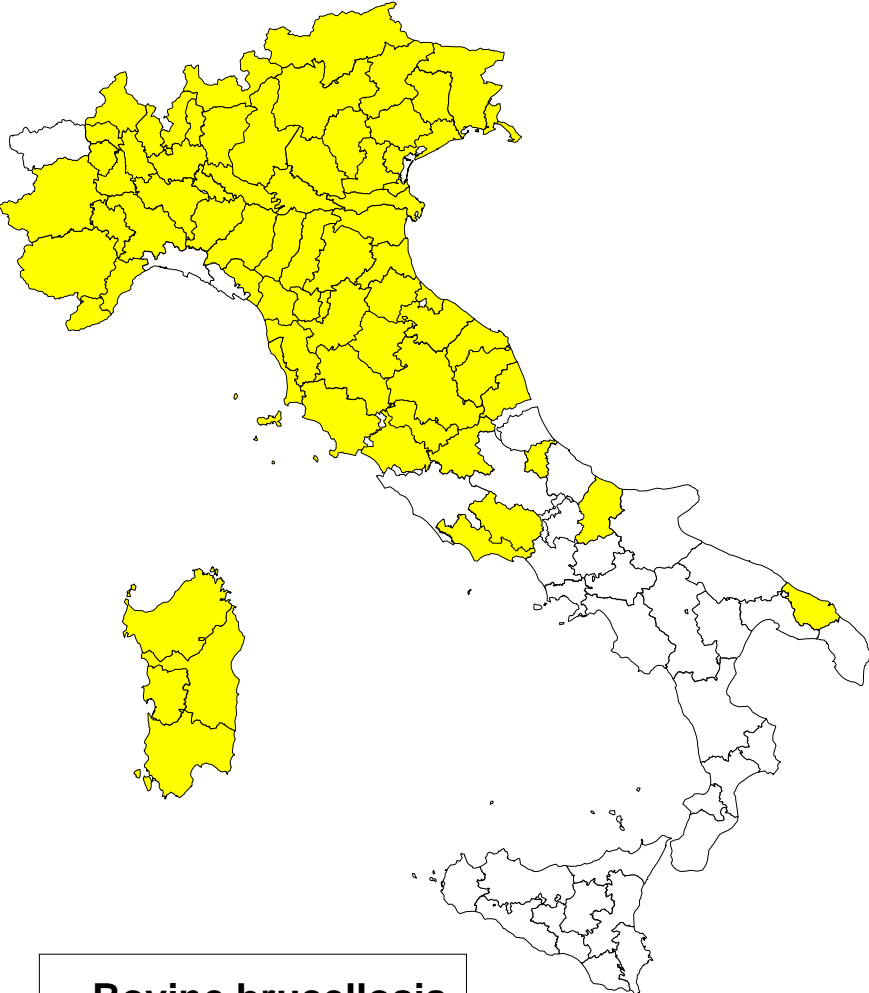
Bovine brucellosis in Italy



Ministry of Health – ITALY



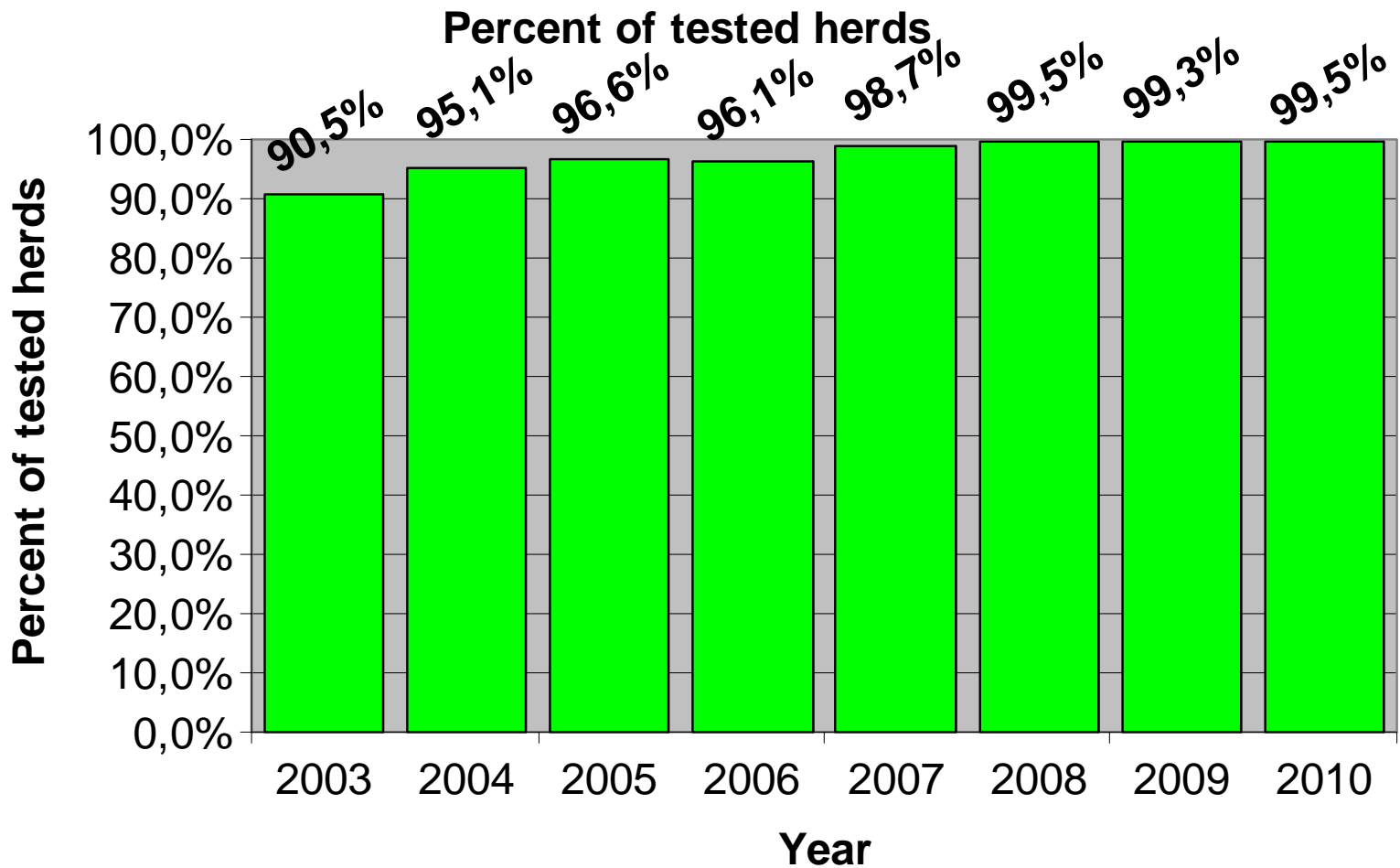
O.F. Provinces at 10-05-2011



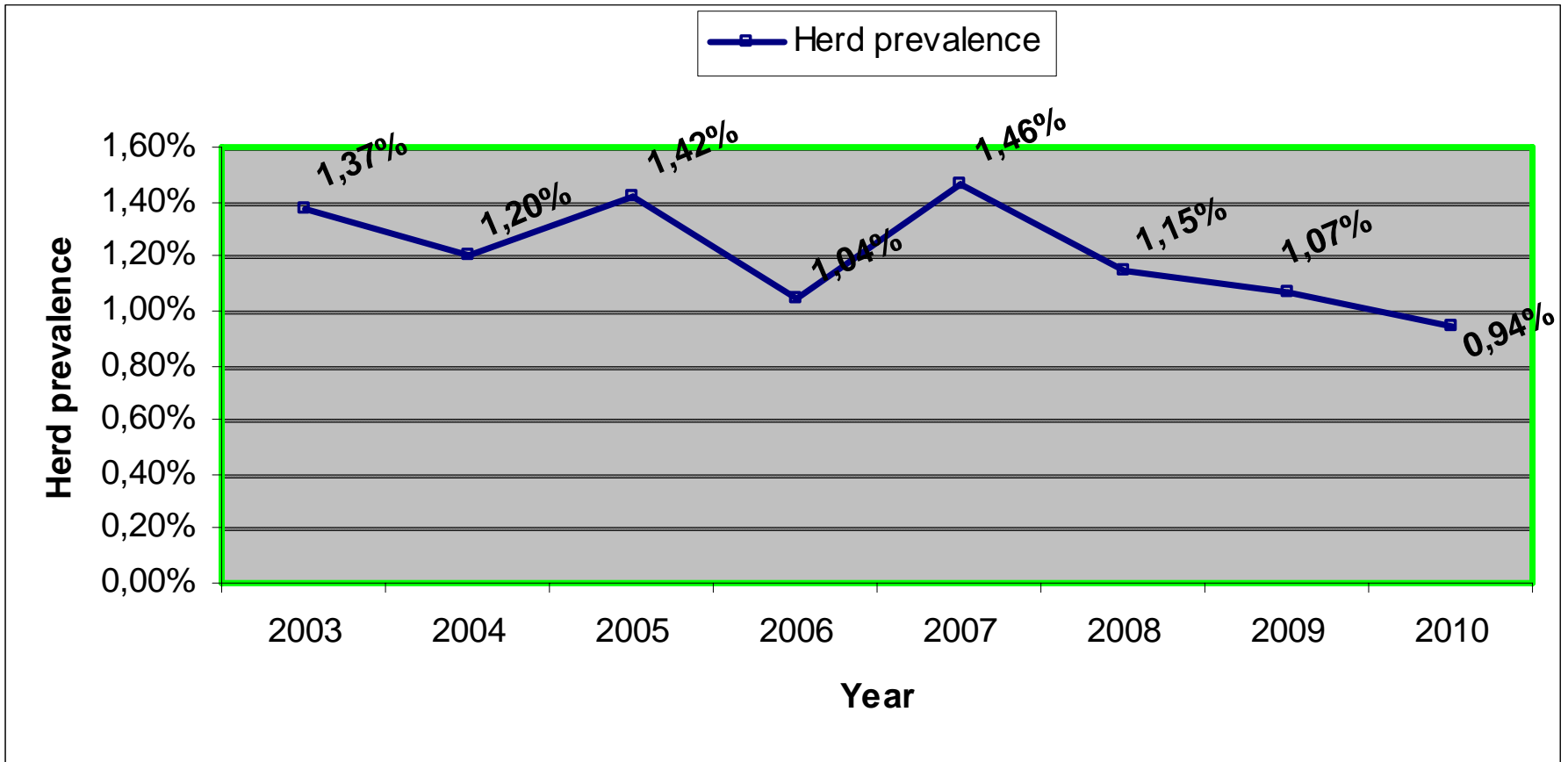
Bovine brucellosis
 OBF provinces
 ■ (69)

ITALIAN REGIONS	ITALIAN OBF PROVINCES
Emilia-Romagna	whole Region
Lombardia	whole Region
Marche	whole Region
Sardegna	whole Region
Toscana	whole Region
Trentino Alto Adige	whole Region
Umbria	whole Region
Piemonte	whole Region
Friuli Venezia Giulia	whole Region
Liguria	Imperia, Savona
Veneto	whole Region
Lazio	Frosinone, Latina, Rieti, Viterbo
Abruzzo	Pescara
Molise	Campobasso
Puglia	Brindisi
TOTAL	69

Bovine herds tested for brucellosis in Italy

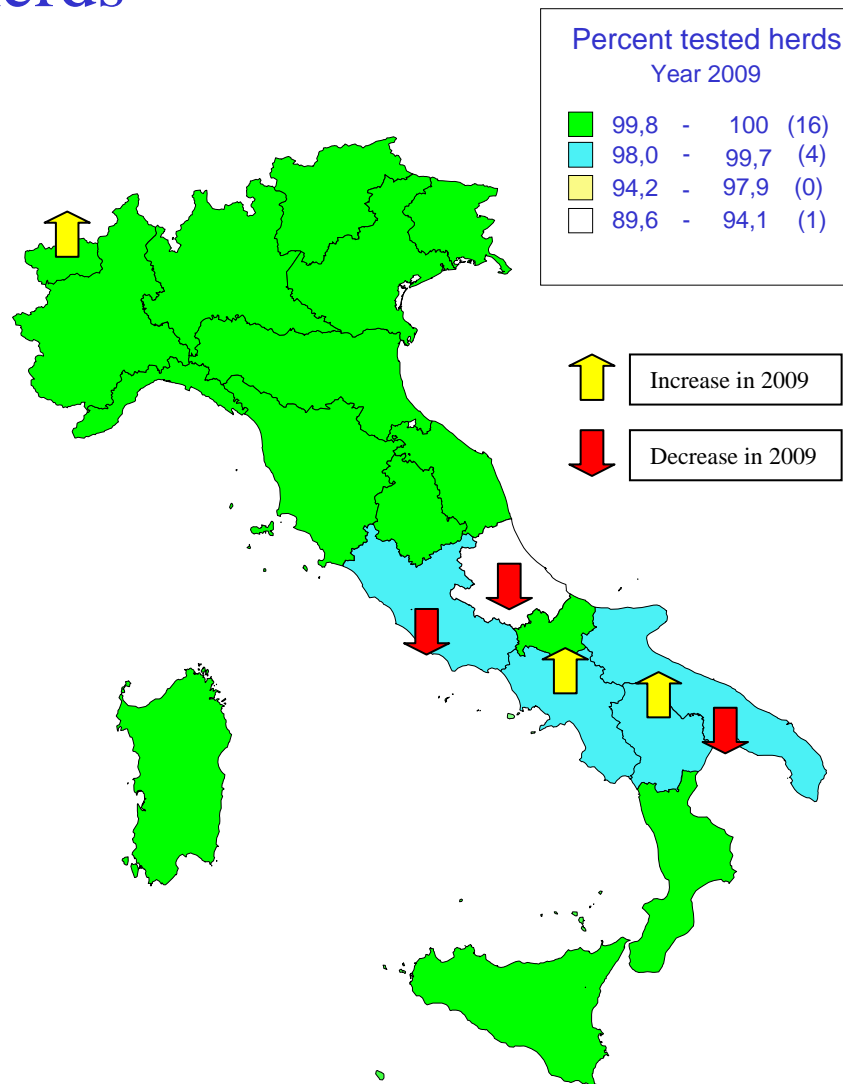


Bovine brucellosis positive herds



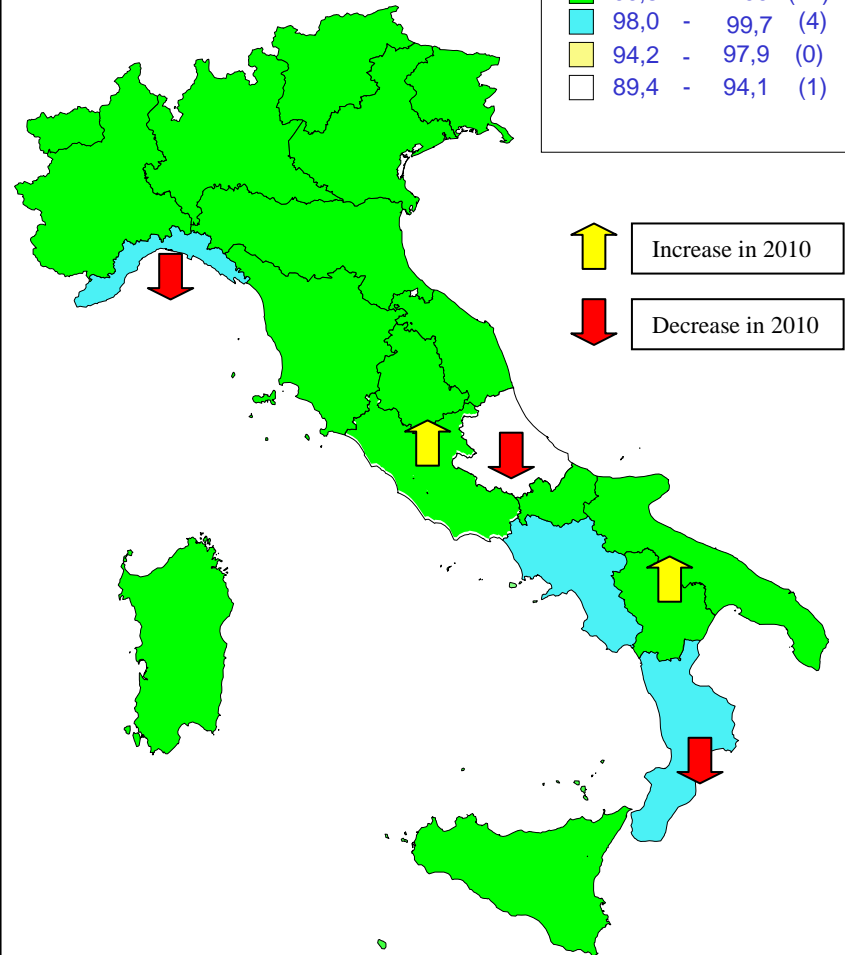
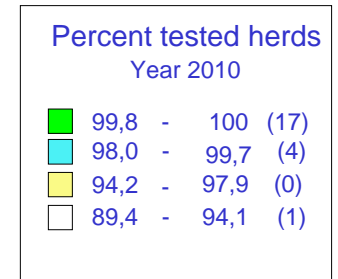
Year 2009: Bovine brucellosis tested herds

Region	Tested herds
Bolzano	100,0%
Calabria	100,0%
Emilia Romagna	100,0%
Friuli Venezia Giulia	100,0%
Liguria	100,0%
Lombardia	100,0%
Molise	100,0%
Piemonte	100,0%
Toscana	100,0%
Umbria	100,0%
Valle d'Aosta	100,0%
Veneto	100,0%
Marche	100,0%
Sardegna	99,9%
Trento	99,9%
Sicilia	99,9%
Basilicata	99,7%
Lazio	99,2%
Puglia	98,1%
Campania	98,1%
Abruzzo	89,6%
Total	99.3%



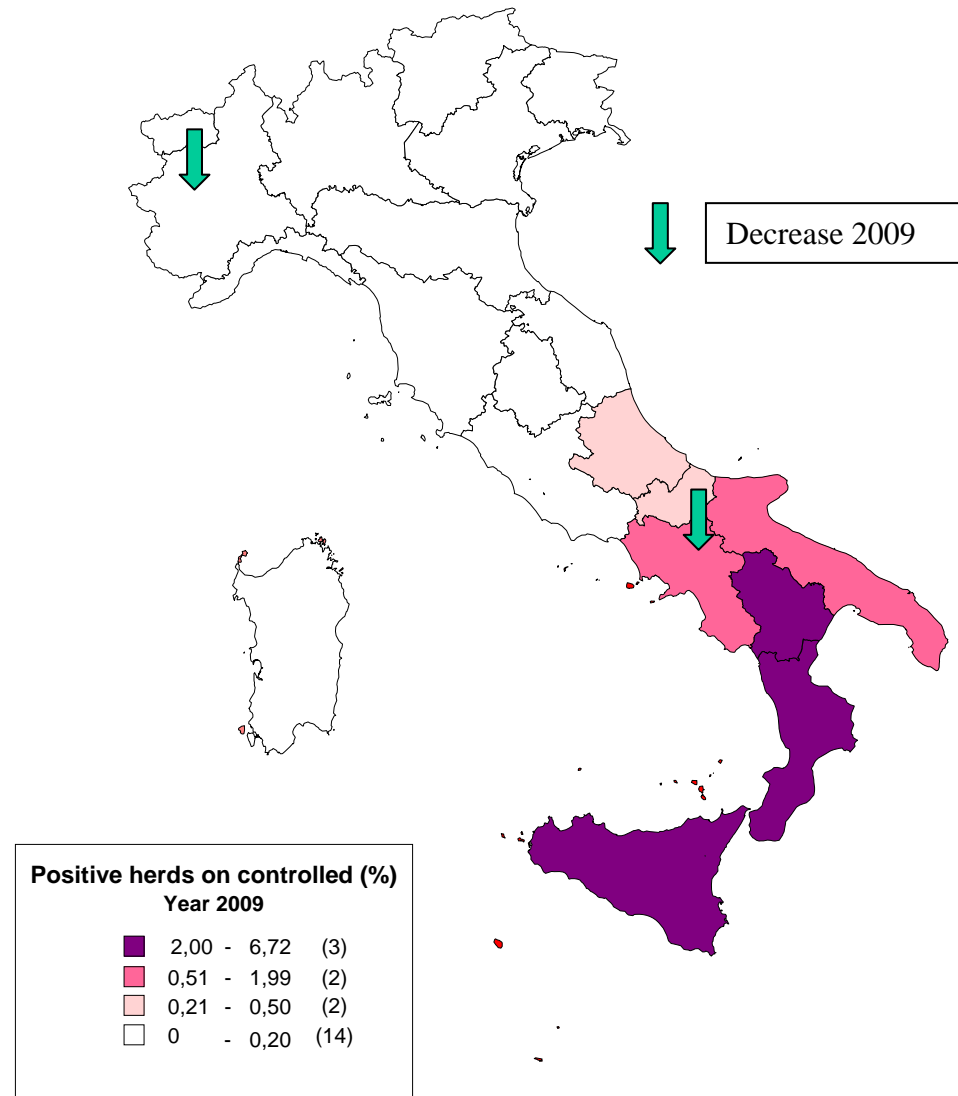
Year 2010: Bovine brucellosis tested herds

Region	Tested herds
Bolzano	100,0%
Friuli Venezia Giulia	100,0%
Lazio	100,0%
Lombardia	100,0%
Marche	100,0%
Piemonte	100,0%
Puglia	100,0%
Toscana	100,0%
Trento	100,0%
Umbria	100,0%
Valle d'Aosta	100,0%
Veneto	100,0%
Emilia Romagna	99,9%
Sardegna	99,9%
Molise	99,9%
Sicilia	99,9%
Basilicata	99,8%
Liguria	99,7%
Calabria	99,6%
Campania	98,6%
Abruzzo	89,4%
Total	99.5%



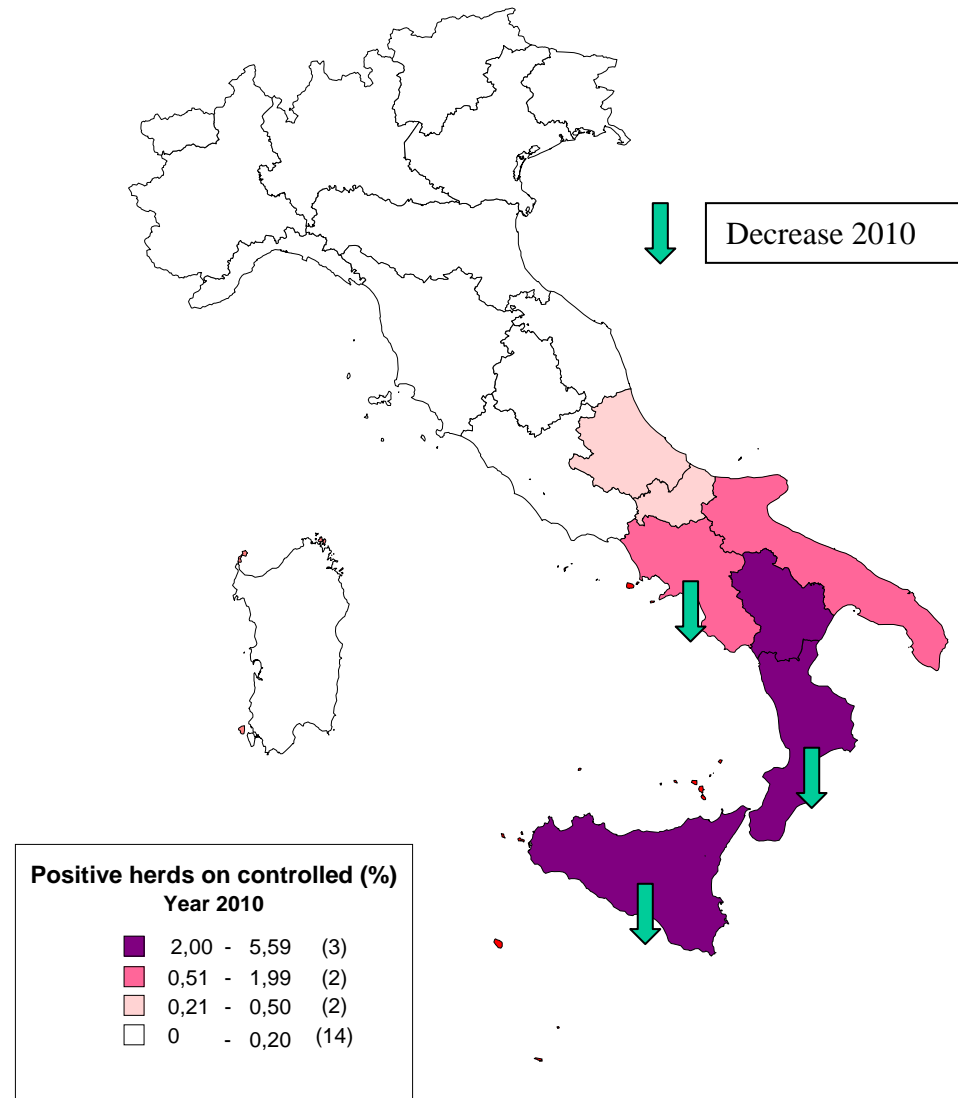
Year 2009: bovine brucellosis positive herds

Region	Percent positive herds
Sicilia	6,72%
Calabria	4,12%
Basilicata	2,13%
Campania	1,28%
Puglia	1,27%
Molise	0,36%
Abruzzo	0,32%
Trento	0,07%
Lazio	0,04%
Sardegna	0,01%
Lombardia	0,01%
Bolzano	0,00%
Emilia Romagna	0,00%
Friuli Venezia Giulia	0,00%
Liguria	0,00%
Marche	0,00%
Piemonte	0,00%
Toscana	0,00%
Umbria	0,00%
Valle d'Aosta	0,00%
Veneto	0,00%
Italy	1,07%



Year 2010: bovine brucellosis positive herds

Region	Percent positive herds
Sicilia	5,59%
Calabria	3,53%
Basilicata	2,95%
Puglia	1,33%
Campania	1,01%
Molise	0,42%
Abruzzo	0,34%
Lombardia	0,01%
Bolzano	0,00%
Emilia Romagna	0,00%
Friuli Venezia Giulia	0,00%
Lazio	0,00%
Liguria	0,00%
Marche	0,00%
Piemonte	0,00%
Sardegna	0,00%
Toscana	0,00%
Trento	0,00%
Umbria	0,00%
Valle d'Aosta	0,00%
Veneto	0,00%
Italy	1,07%



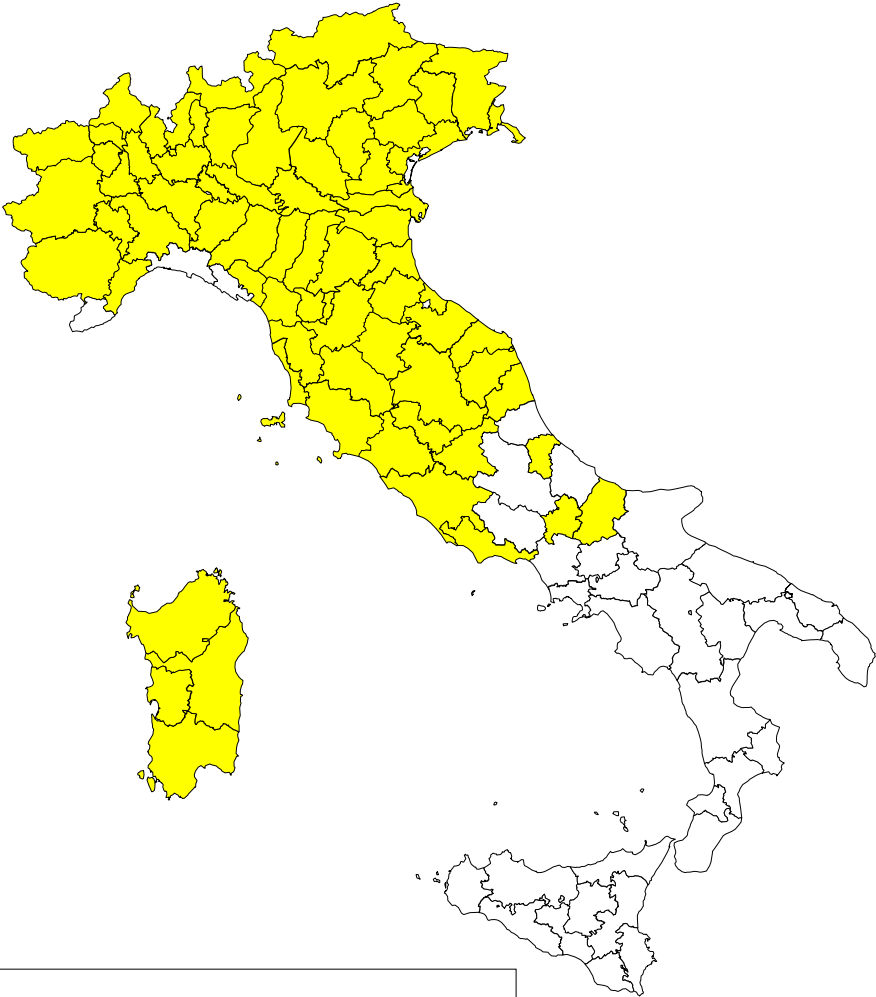
Sheep and goat brucellosis in Italy



Ministry of Health – ITALY



OBF Provinces at 10-05-2011

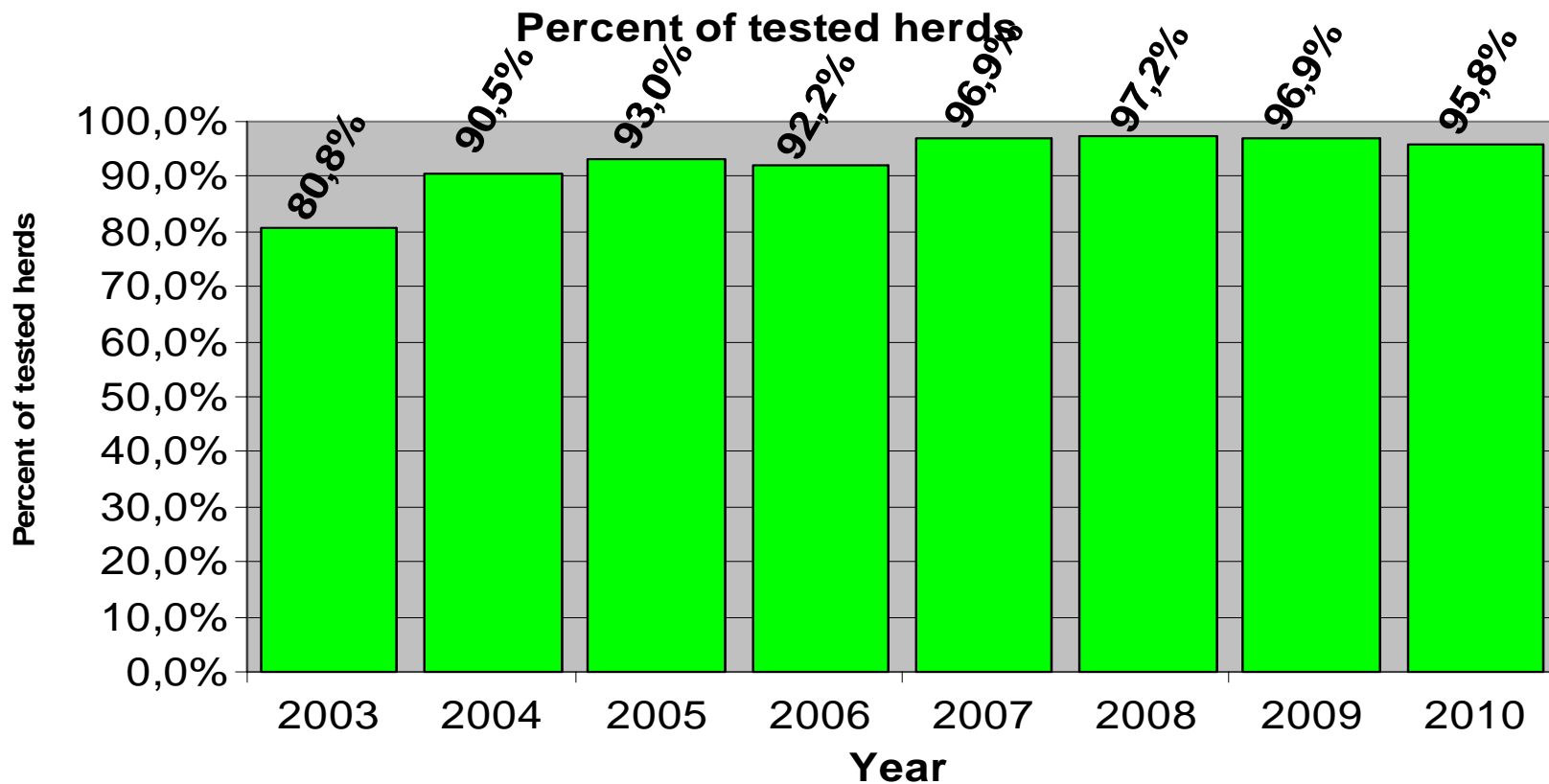


**Sheep and goat
brucellosis
OBF provinces**

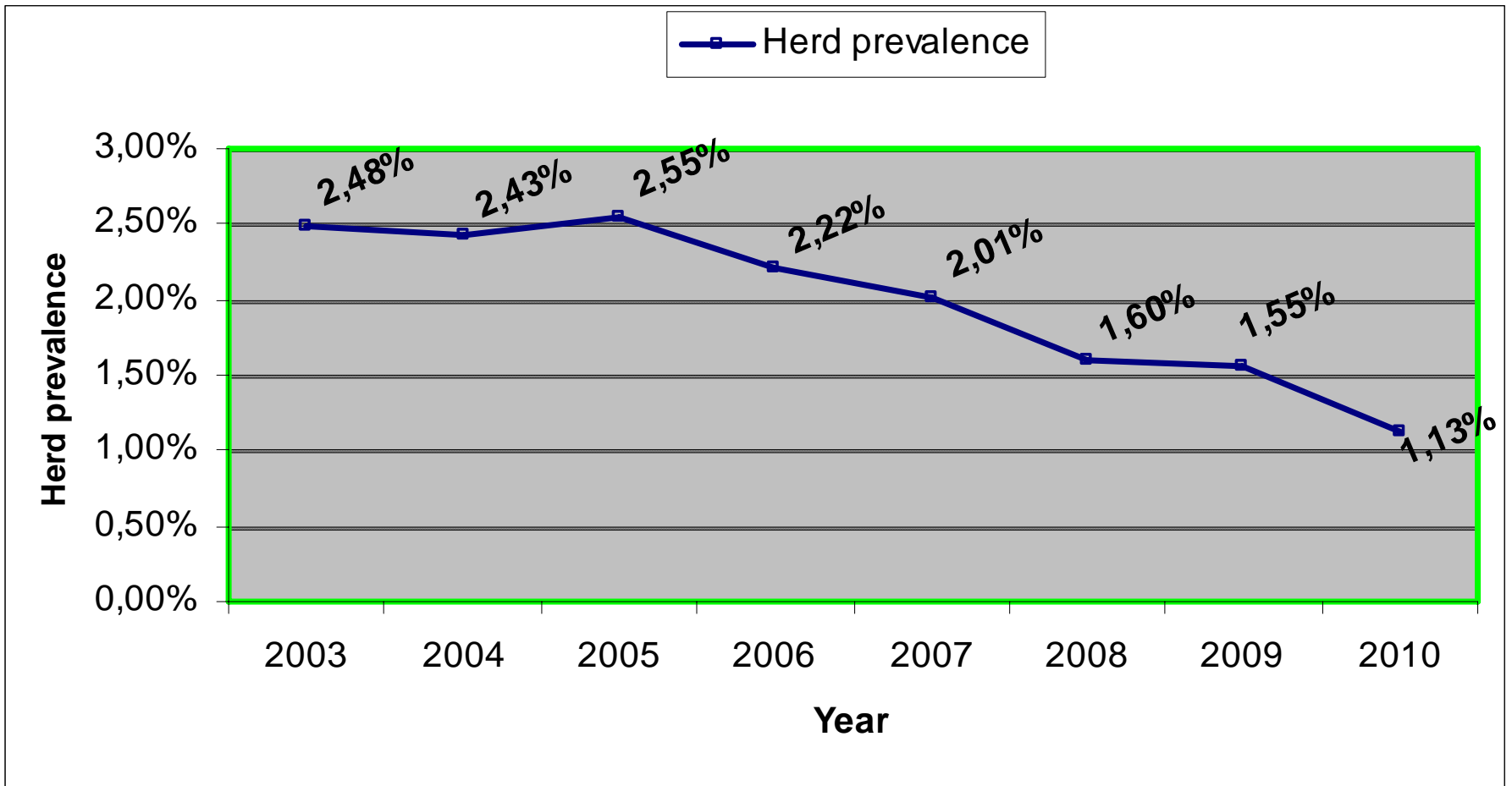
(70)

ITALIAN REGIONS	ITALIAN OBF PROVINCES
Lombardia	whole Region
Marche	whole Region
Sardegna	whole Region
Toscana	whole Region
Trentino Alto Adige	whole Region
Umbria	whole Region
Piemonte	whole Region
Friuli Venezia Giulia	whole Region
Liguria	Savona
Veneto	whole Region
Lazio	Latina, Rieti, Roma, Viterbo
Abruzzo	Pescara
Molise	whole Region
Emilia Romagna	whole Region
Valle d'Aosta	whole Region
TOTAL	70

Sheep and goat herds tested in Italy

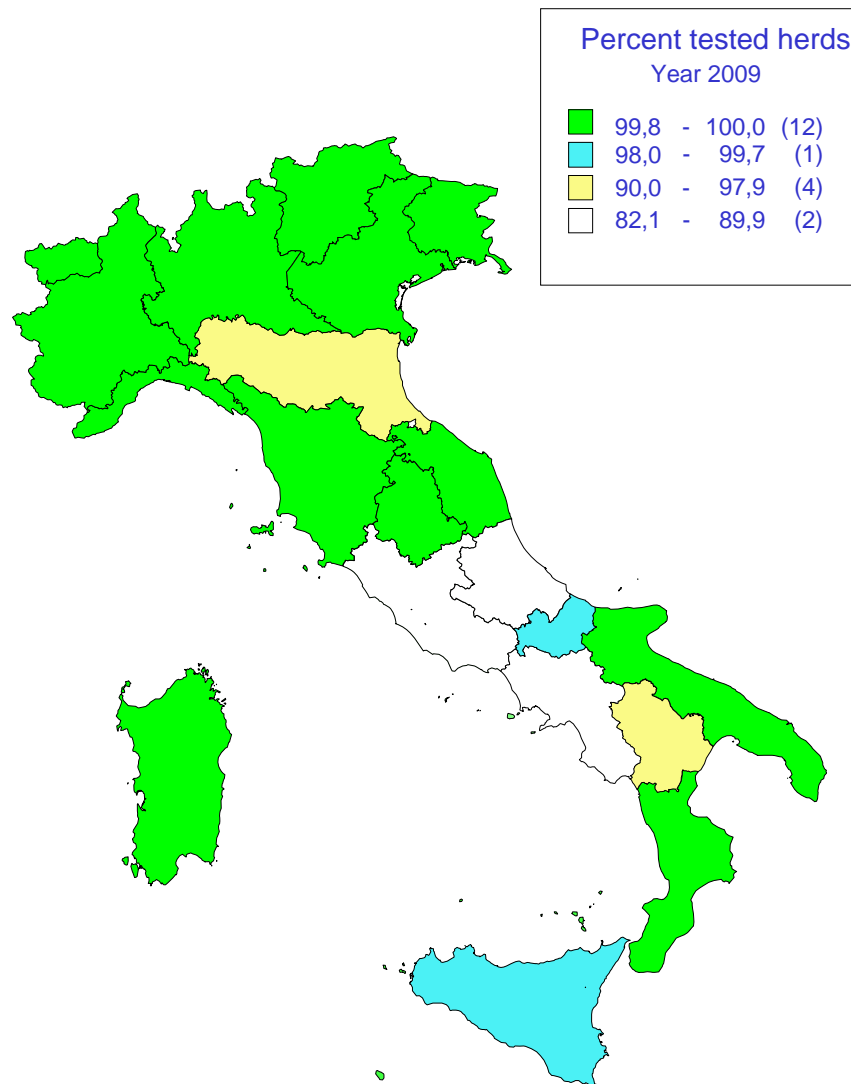


Positive herds



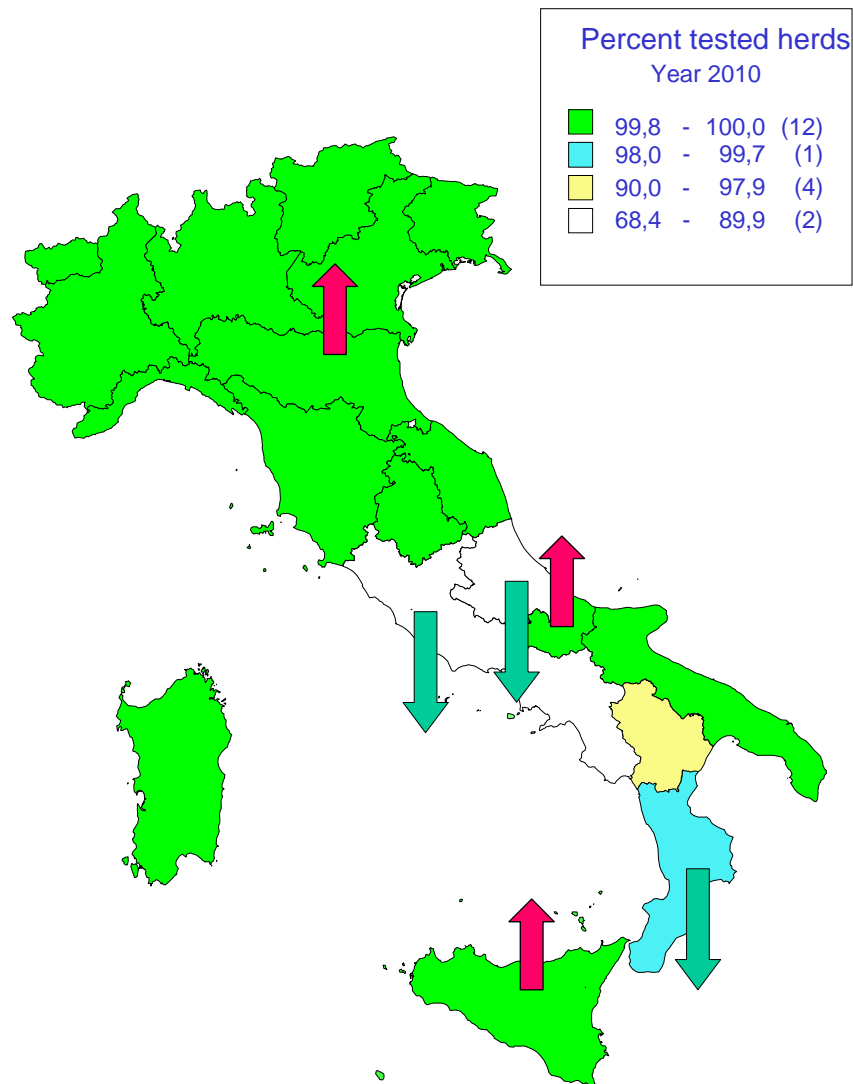
Year 2009: Tested herds

Region	Tested herds
Bolzano	100,0%
Calabria	100,0%
Friuli Venezia Giulia	100,0%
Liguria	100,0%
Marche	100,0%
Molise	100,0%
Piemonte	100,0%
Toscana	100,0%
Trento	100,0%
Umbria	100,0%
Valle d'Aosta	100,0%
Veneto	100,0%
Lombardia	100,0%
Sardegna	99,9%
Sicilia	99,2%
Puglia	97,6%
Emilia Romagna	95,9%
Basilicata	90,2%
Abruzzo	89,9%
Lazio	89,7%
Campania	82,1%
Total	96,9%



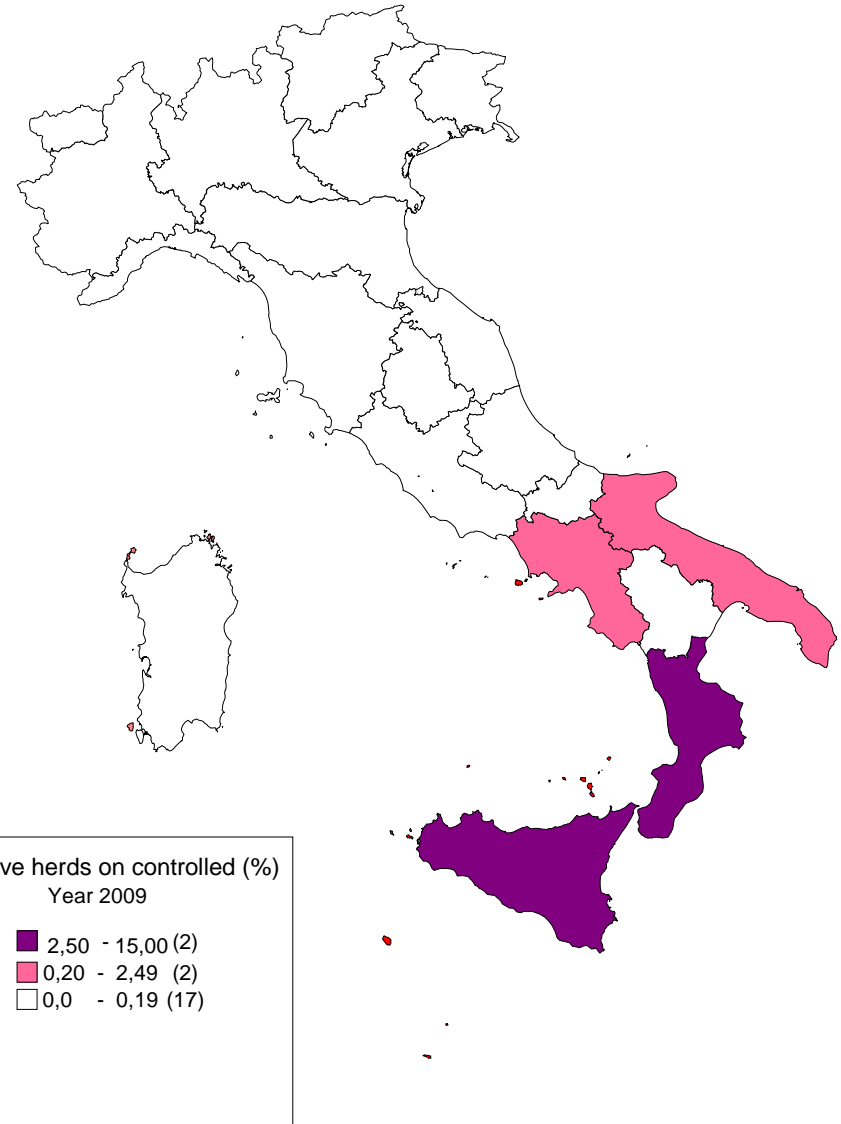
Year 2010: Tested herds

Region	Tested herds
Bolzano	100,0%
Friuli Venezia Giulia	100,0%
Liguria	100,0%
Marche	100,0%
Molise	100,0%
Piemonte	100,0%
Sardegna	100,0%
Trento	100,0%
Valle d'Aosta	100,0%
Veneto	100,0%
Lombardia	100,0%
Puglia	100,0%
Umbria	100,0%
Toscana	99,9%
Emilia Romagna	99,9%
Sicilia	99,9%
Calabria	99,4%
Basilicata	95,7%
Campania	85,5%
Lazio	83,4%
Abruzzo	68,4%
Total	95,8%



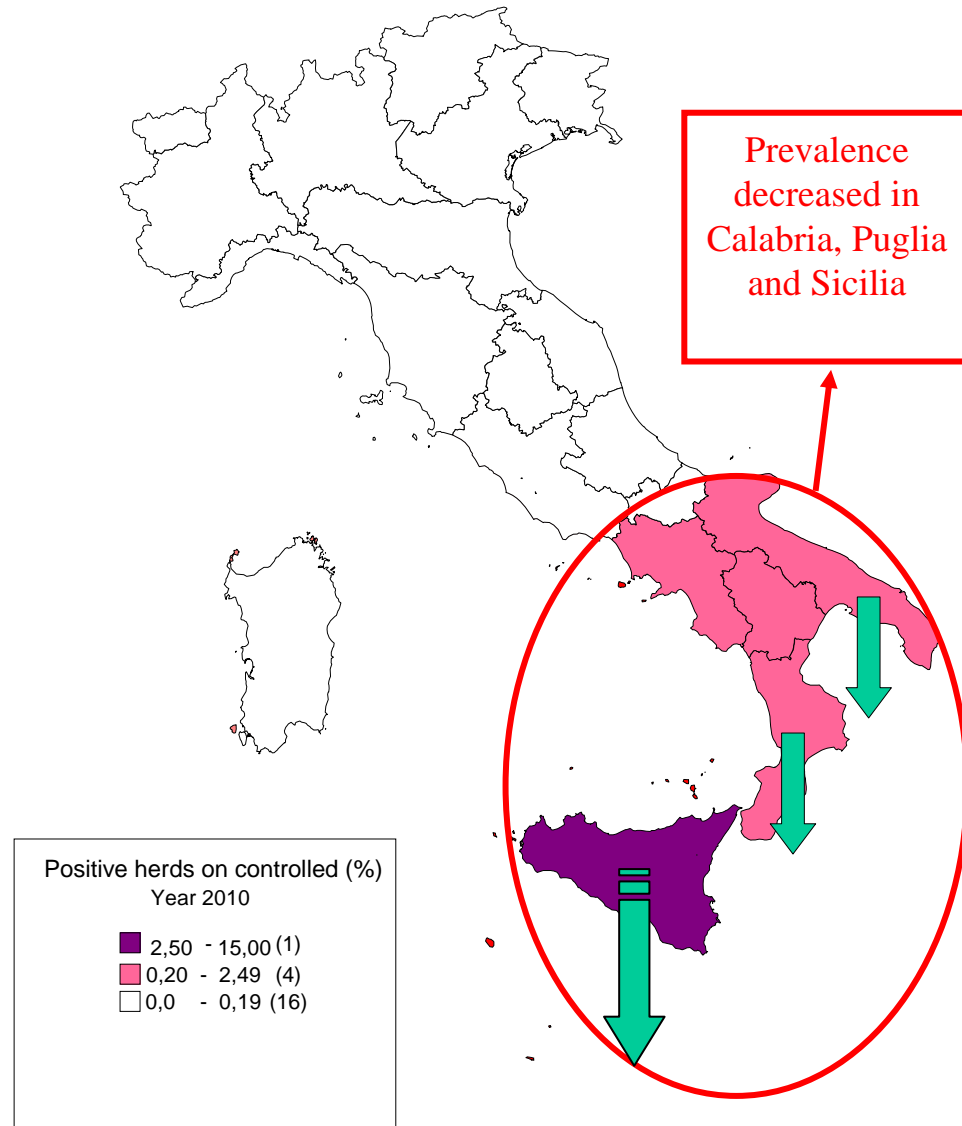
Percentage of infected flocks in 2009

Region	Percentage infected flocks
Sicilia	13,19%
Calabria	2,81%
Puglia	1,87%
Campania	0,92%
Basilicata	0,19%
Emilia Romagna	0,08%
Abruzzo	0,04%
Lazio	0,03%
Lombardia	0,02%
Sardegna	0,01%
Bolzano	0,00%
Friuli Venezia Giulia	0,00%
Liguria	0,00%
Marche	0,00%
Molise	0,00%
Piemonte	0,00%
Toscana	0,00%
Trento	0,00%
Umbria	0,00%
Valle d'Aosta	0,00%
Veneto	0,00%
Total	1,55%



Percentage of infected flocks in 2010

Region	Percentage infected flocks
Sicilia	9,23%
Calabria	2,43%
Puglia	1,56%
Campania	1,10%
Basilicata	0,21%
Lazio	0,07%
Abruzzo	0,02%
Bolzano	0,00%
Emilia Romagna	0,00%
Friuli Venezia Giulia	0,00%
Liguria	0,00%
Lombardia	0,00%
Marche	0,00%
Molise	0,00%
Piemonte	0,00%
Sardegna	0,00%
Toscana	0,00%
Trento	0,00%
Umbria	0,00%
Valle d'Aosta	0,00%
Veneto	0,00%
Total	1,13%



Overall picture

- More central and north regions officially free (Emilia Romagna & Valle d'Aosta for S & G brucellosis, Frosinone, Latina, Viterbo for bovine brucellosis)
- Decrease in holding prevalence in Calabria, Sicilia and Puglia

Actions proposed at a Central Level

- Renewal of O.M. 14-11-2006 for Calabria, Campania, Puglia and Sicilia with:
 - Compulsory use of SANAN
 - Control of transhumance through national database (BDN)
 - Shortening of follow up of positive holdings to brucellosis (21 days)
 - Shortening of time for slaughtering of positive animals (15 days from notification to the owner)
 - Guidelines for stamping out
- Audit to regions and competent laboratories

Thank you for your attention

Ministry of Health - ITALY

