

Bluetongue in Italy

Report:

From 01.01.2010 to 31.12.2010

Data source: <http://eubtnet.izs.it>

(outbreaks data source: ADNS; Surveillance data source: BTNet)

BTV occurrence

from 01/01/2010 to 31/12/2010

Data refer to

- 5 animals with clinical signs
- 32 seroconverted animals tested in the framework of the national surveillance system.

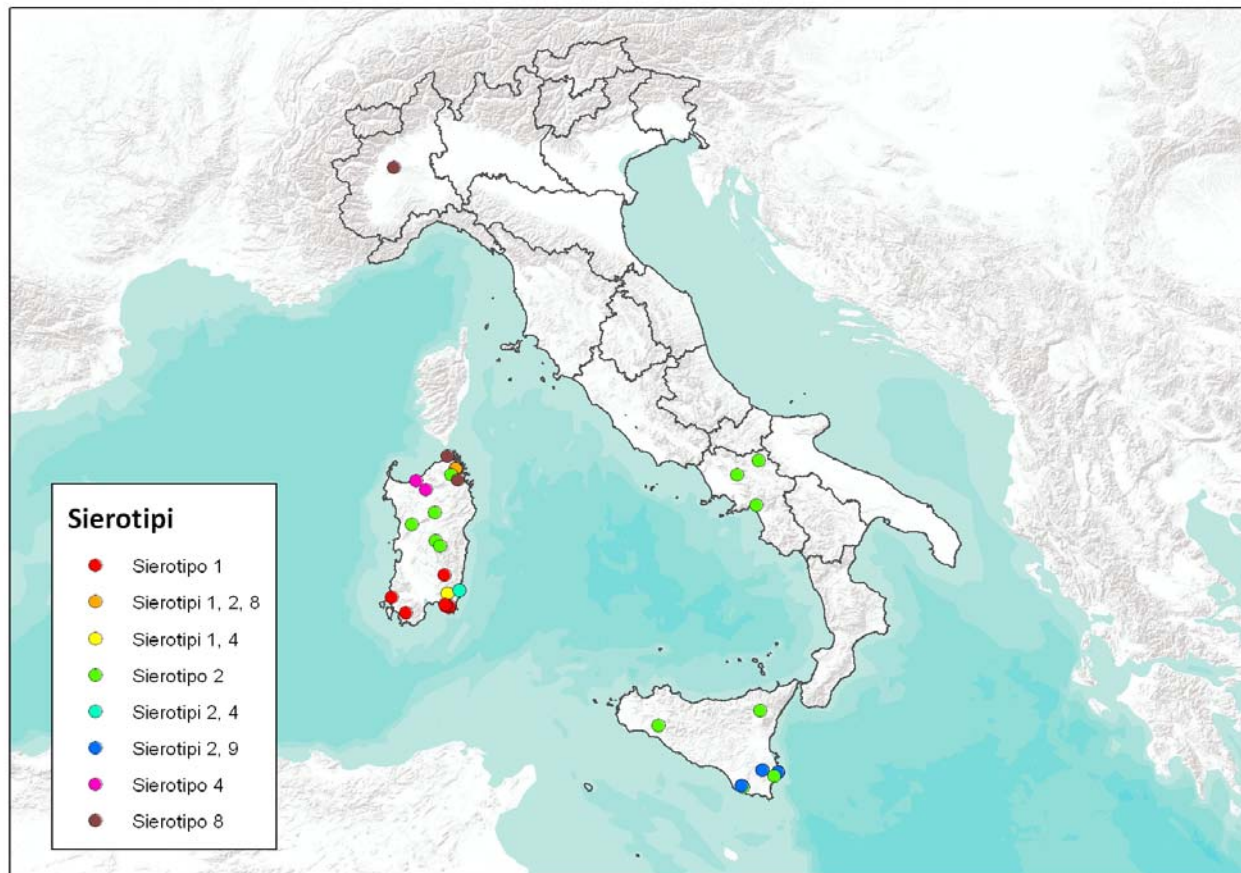
Region	Serotype	Species	N. of outbreaks
Piemonte	Serotype 8	CATTLE	1
		GOATS	1
		SHEEP	1
Campania	Serotype 2	CATTLE	3
Sicilia	Serotype 2	CATTLE	5
		SHEEP	1
	Serotype 2 & 9	CATTLE	3
Sardegna	Serotype 1	SHEEP	5
		GOATS	2
	Serotype 2	SHEEP	7
	Serotype 4	GOATS	2
		CATTLE	1
	Serotype 2 & 4	SHEEP	1
	Serotype 8	SHEEP	3
		GOATS	1

As defined in Art. 2 of COMMISSION REGULATION (EC) No 1266/2007, a case of bluetongue is an animal that meets one of the following requirements:

- (i) it presents clinical signs consistent with the presence of bluetongue;
- (ii) it is a sentinel animal that had showed negative serological results in a previous test and has seroconverted from negative to positive for antibodies to at least one bluetongue serotype since that test;
- (iii) it is an animal from which the bluetongue virus has been isolated and identified as such;
- (iv) it is an animal which has tested positive to bluetongue serological tests or from which viral antigen or viral ribonucleic acid (RNA) specific to one or more of the bluetongue serotypes has been identified.

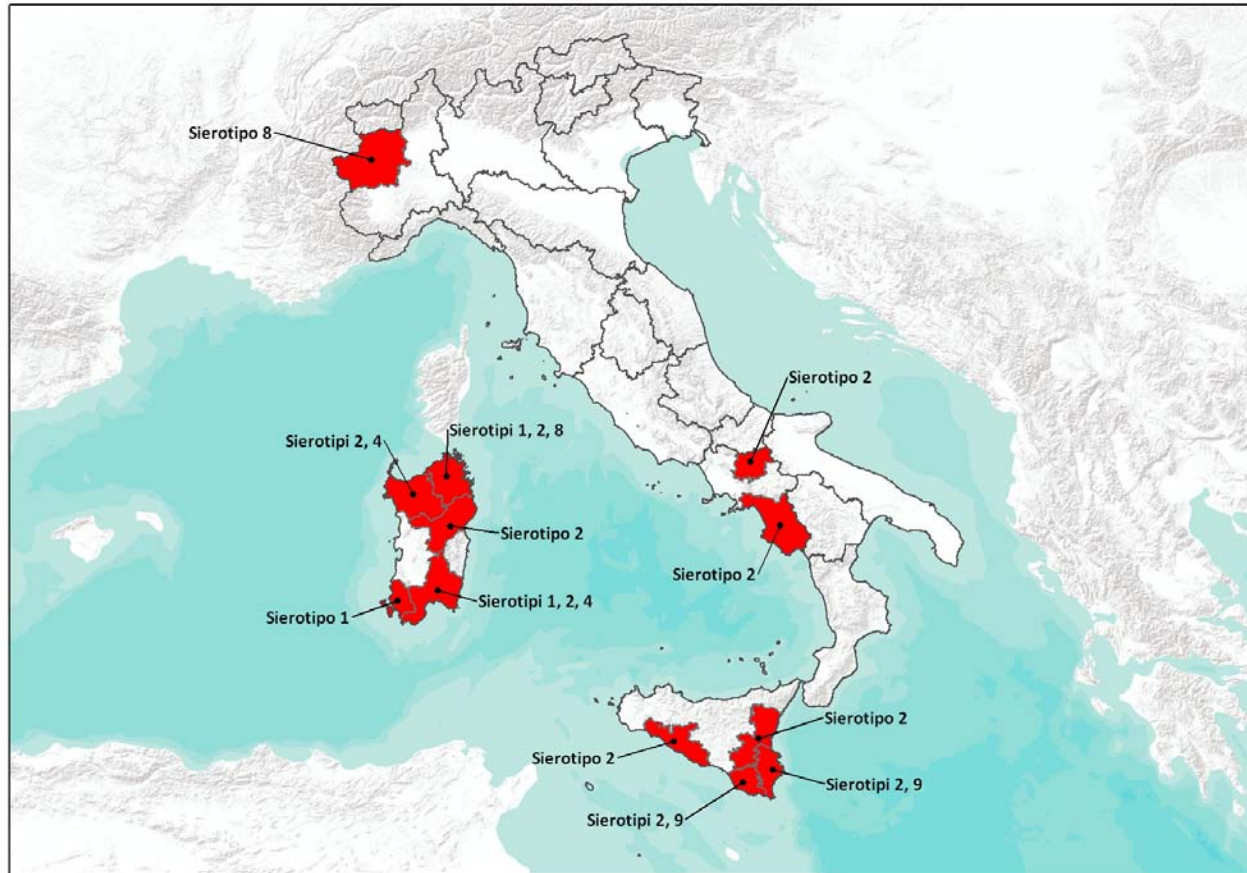
BTV occurrence

Distribution of bluetongue outbreaks
from 01/01/2010 to 31/12/2010



BTV occurrence

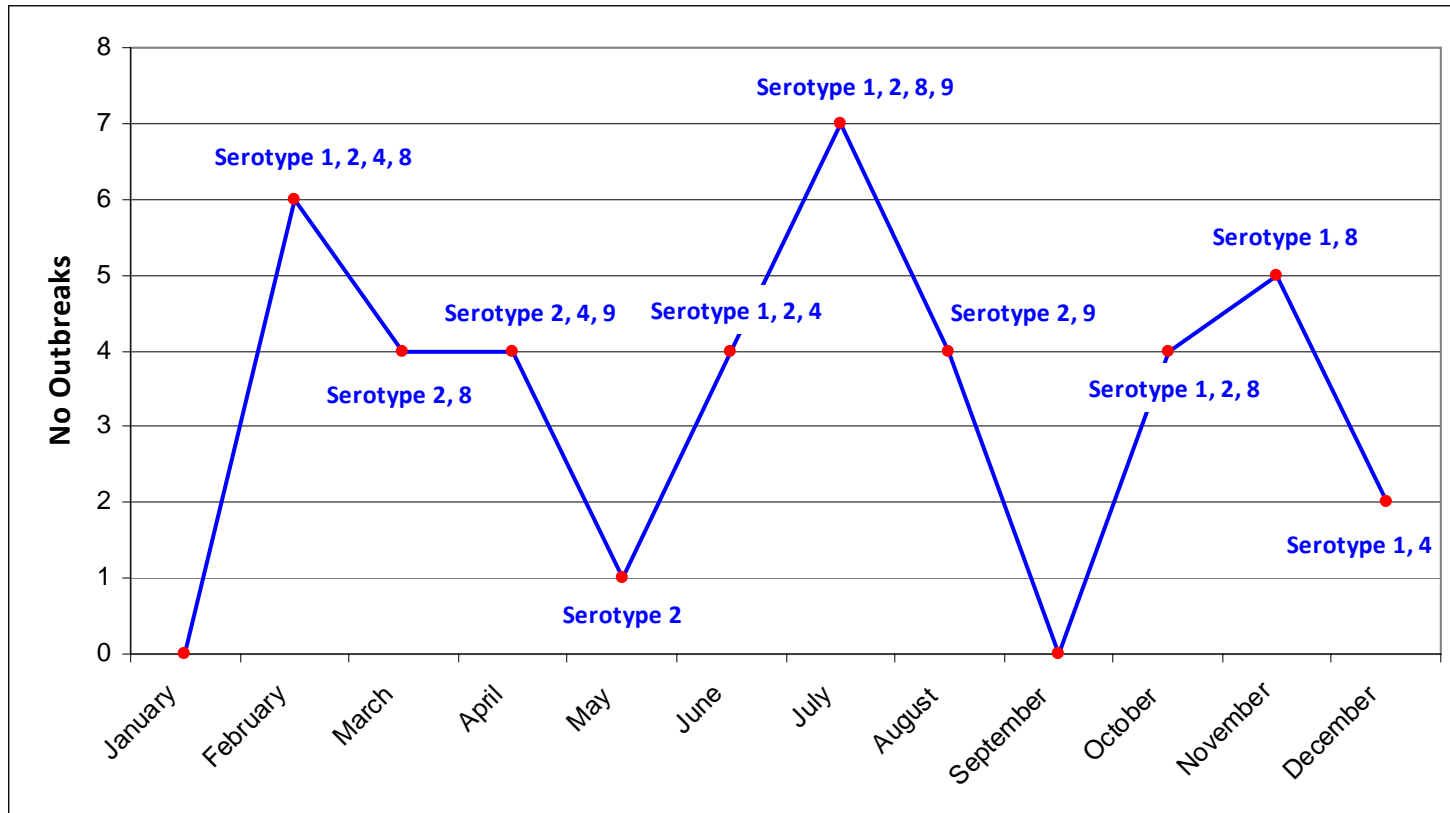
Distribution of bluetongue outbreaks
from 01/01/2010 to 31/12/2010



BT outbreaks in Italy

from 01/01/2010 to 31/12/2010

According to date of confirmation



Serological surveillance activity in Italy (01/01/2010-31/12/2010)

Number of tests performed on sentinel animals

Species	ELISA	PCR	Serum neutralisation
CATTLE	315957	1166	23864
BUFFALOS	1275	4	208
SHEEP	68776	172	2720
GOATS	9670	12	368
SHEEP&GOATS	7928	110	904
Total	403606	1464	28064

METHOD	gen-10	feb-10	mar-10	apr-10	mag-10	giu-10	lug-10	ago-10	set-10	ott-10	nov-10	dic-10	Total
<i>ELISA</i>	19061	21489	34656	35404	38426	37531	36946	36486	37098	36919	37364	32370	403750
<i>PCR</i>	126	105	151	108	214	212	48	116	145	122	55	62	1464
<i>Serum neutralisation</i>	1200	2178	2016	2245	2976	3097	2416	2152	2328	2056	3456	1944	28064
Total	20387	23772	36823	37757	41616	40840	39410	38754	39571	39097	40875	34376	433278

Italy - BTV1 and BTV8 situation in Piemonte and Liguria regions

REGION	PROVINCE	VIRUS CIRCULATION		VACCINATION		DEMARICATION
		<i>BTV1</i>	<i>BTV8</i>	<i>BTV1</i>	<i>BTV8</i>	
Piemonte	Cuneo	No	Not from 2 years	Yes	Yes	Low risk area BTV1-BTV8
	Alessandria, Biella, Verbano-Cusio-Ossola, Vercelli	No (data on monitoring programme will be provided)	No (data on monitoring programme will be provided)	Yes	Yes	Low risk area BTV1-BTV8
	Novara	No	No (data on monitoring programme will be provided)	No	Yes	Low risk area BTV8
	Asti e Torino	No	Yes	Yes	Yes	Low risk area for BTV1 Normal restricted area for BTV8
Liguria	Imperia	No	No	Yes	Yes	Low risk area BTV1-BTV8

Thank you for attention