



Ministério da
Agricultura
Desenvolvimento
Rural e Pescas



DGV
Direcção Geral
de Veterinária

Portugal

Bovine tuberculosis eradication programme 2008

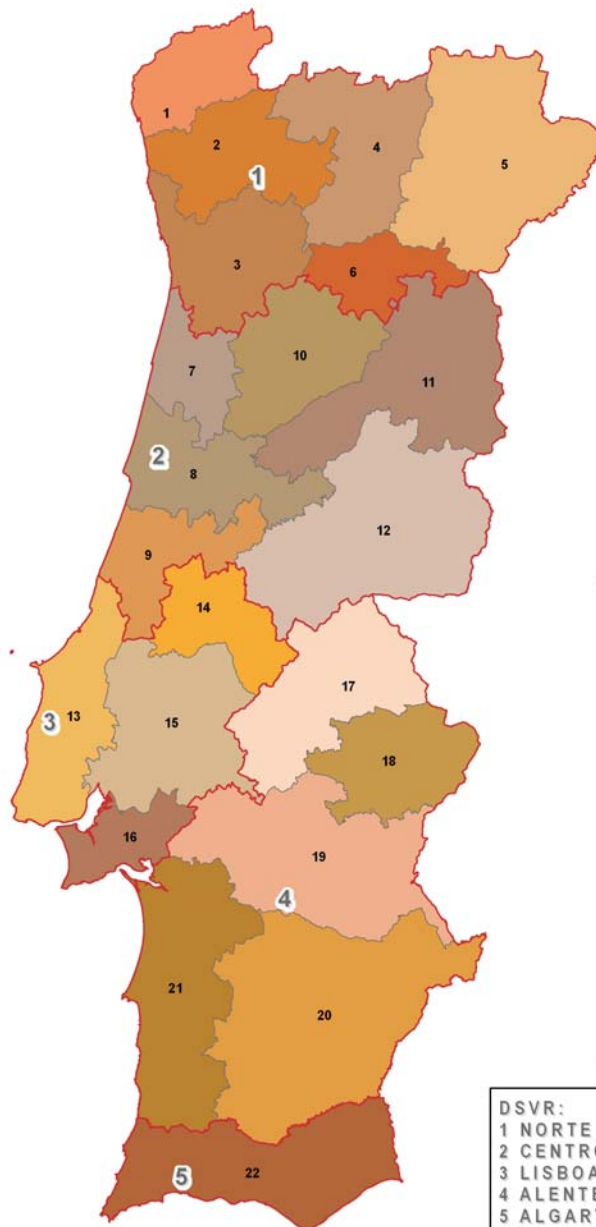
Epidemiological situation

Standing Committee on the Food Chain and Animal Health (SCOFAH)

Brussels, 3th and 4th November 2009

introduction

- The eradication programme for bovine tuberculosis (BT) has been well implemented
- In some aspects has gone beyond the requirements of Community legislation
- During the last years the evolution of the indicators regarding the disease has been favourable



- DIV:
- 1 VIANA DO CASTELO
 - 2 BRAGA
 - 3 PORTO
 - 4 VILA REAL
 - 5 BRAGANÇA
 - 6 DOURO SUL
 - 7 AVEIRO
 - 8 COIMBRA
 - 9 LEIRIA
 - 10 VISEU
 - 11 GUARDA
 - 12 CASTELO BRANCO
 - 13 OESTE
 - 14 RIBATEJO NORTE
 - 15 RIBATEJO
 - 16 SETÚBAL
 - 17 PORTALEGRE
 - 18 ELVAS
 - 19 ÉVORA
 - 20 BEJA
 - 21 ALCÁCER DO SAL
 - 22 FARO

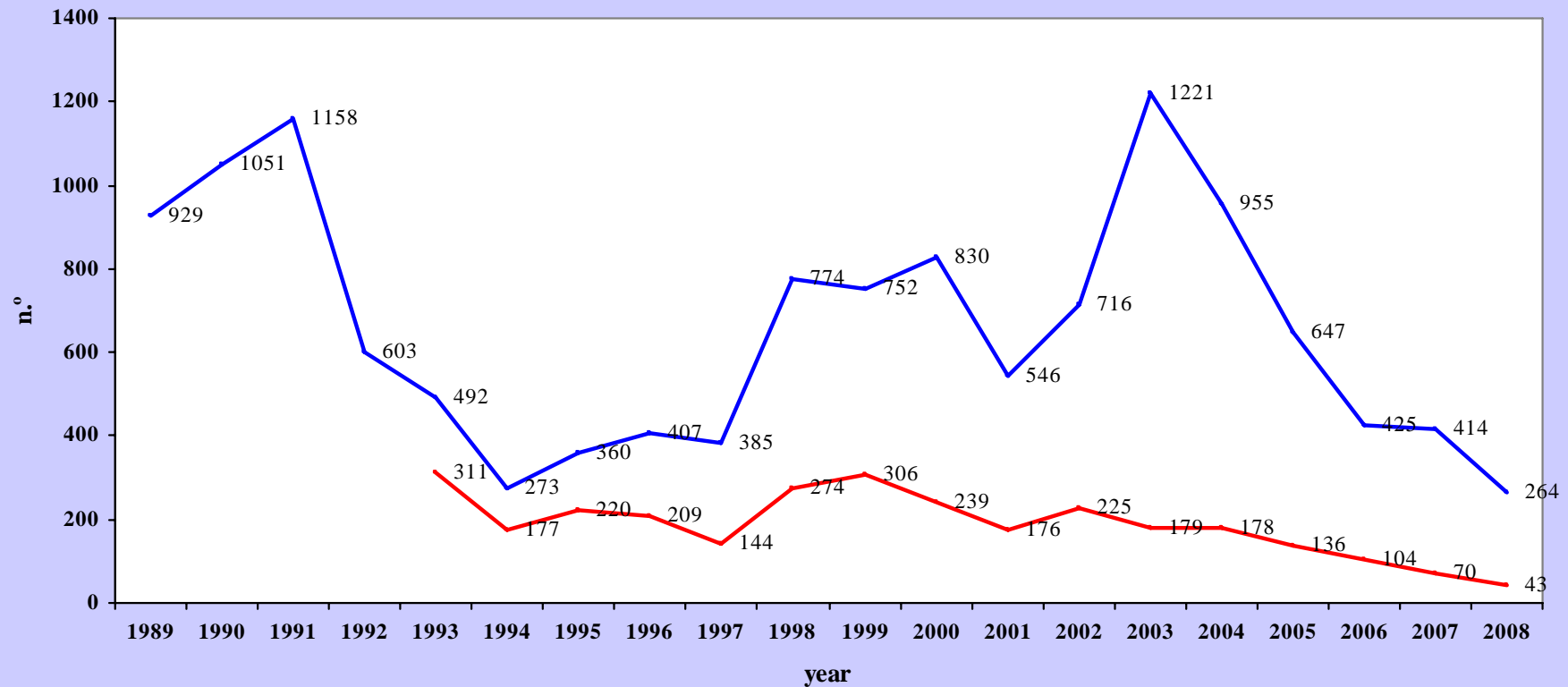
- DSVR:
- 1 NORTE
 - 2 CENTRO
 - 3 LISBOA E VALE DO TEJO
 - 4 ALENTEJO
 - 5 ALGARVE

n.º herds
40.911

n.º animals
1.138.006

bovine tuberculosis eradication programme in Portugal historic of the n.º positive herds / n.º positive animals

1989 - 2008

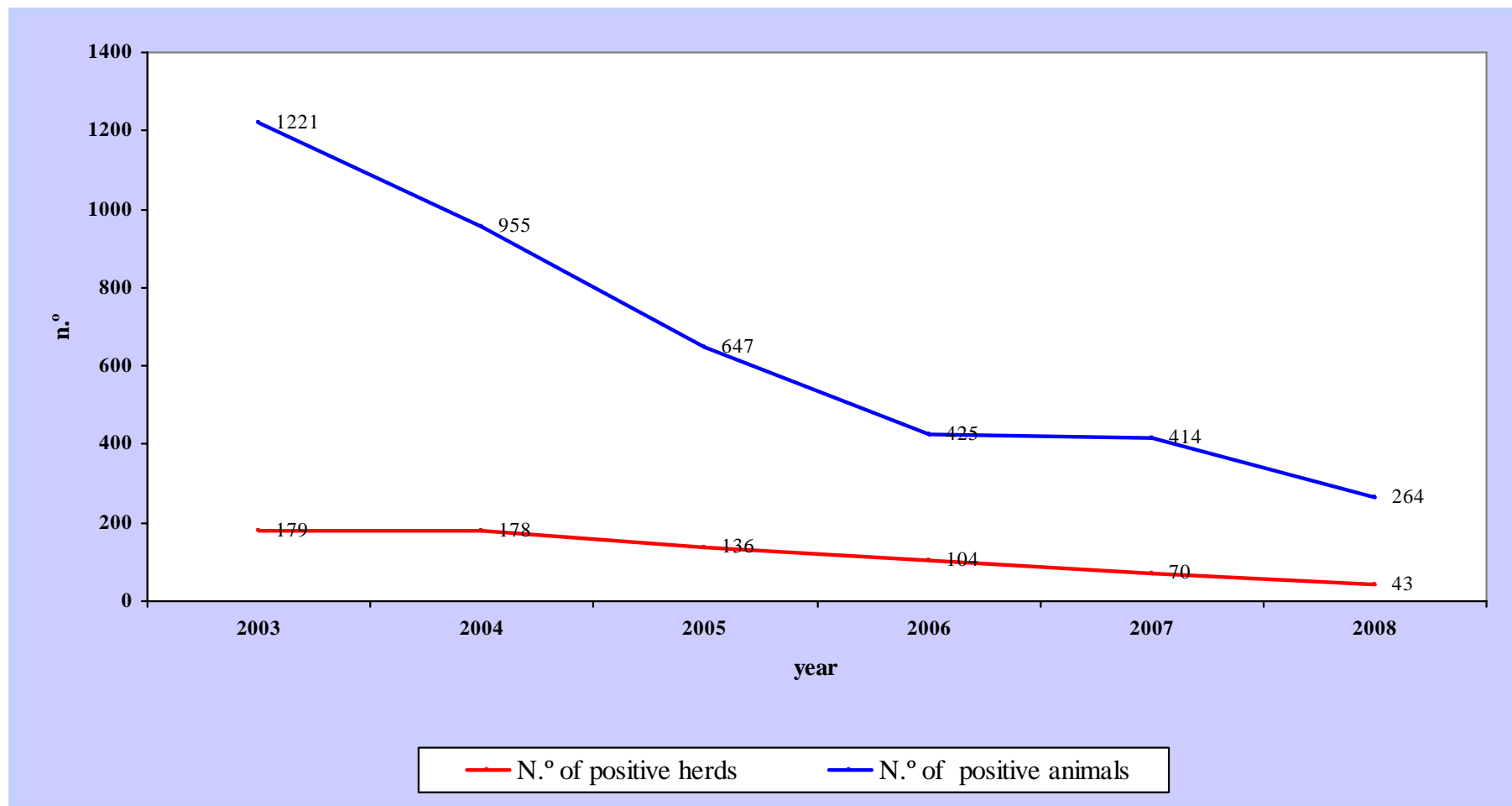


— N.º of positive herds — N.º of positive animals

bovine tuberculosis eradication programme in Portugal

n.º positive herds / n.º positive animals

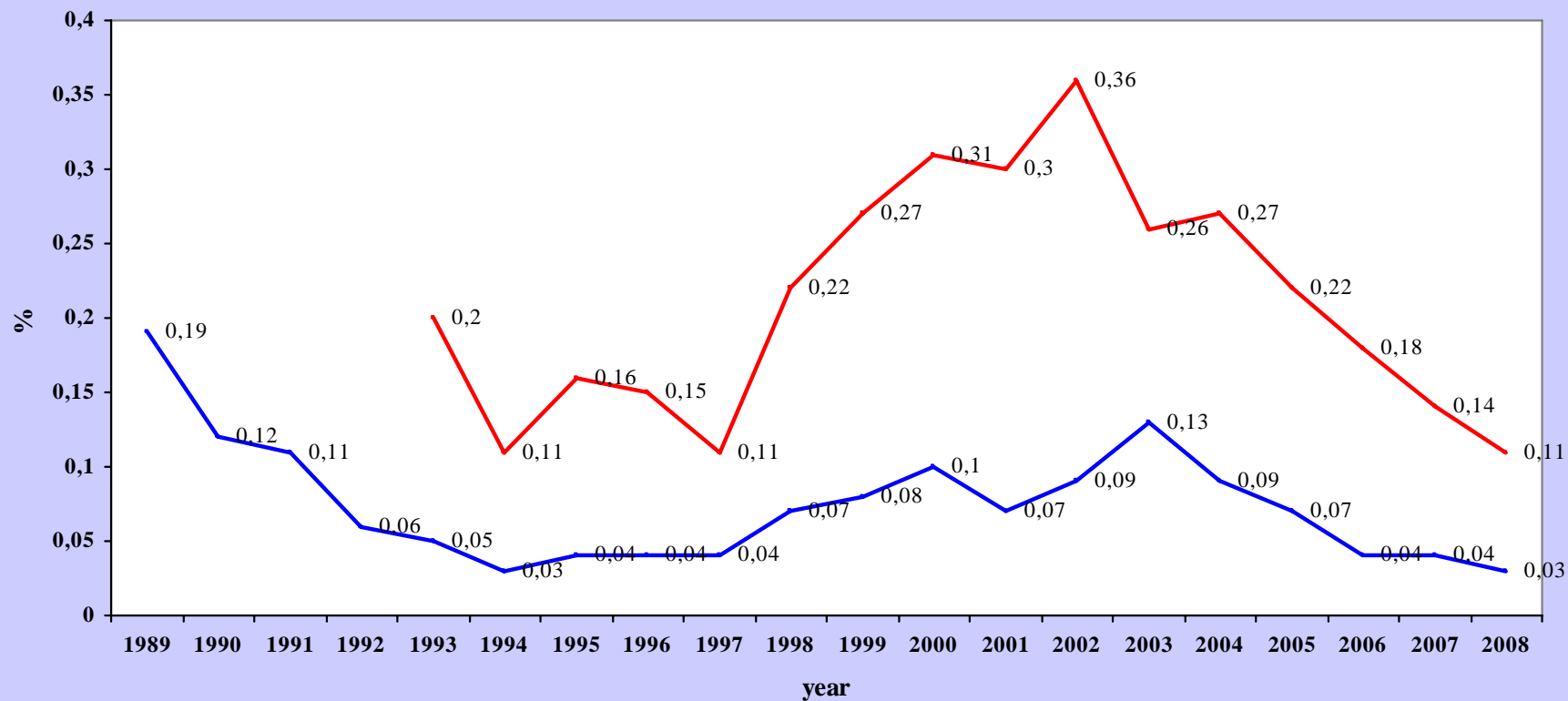
2003 - 2008



bovine tuberculosis eradication programme in Portugal

historic of the % positive herds / % positive animals

1989 - 2008

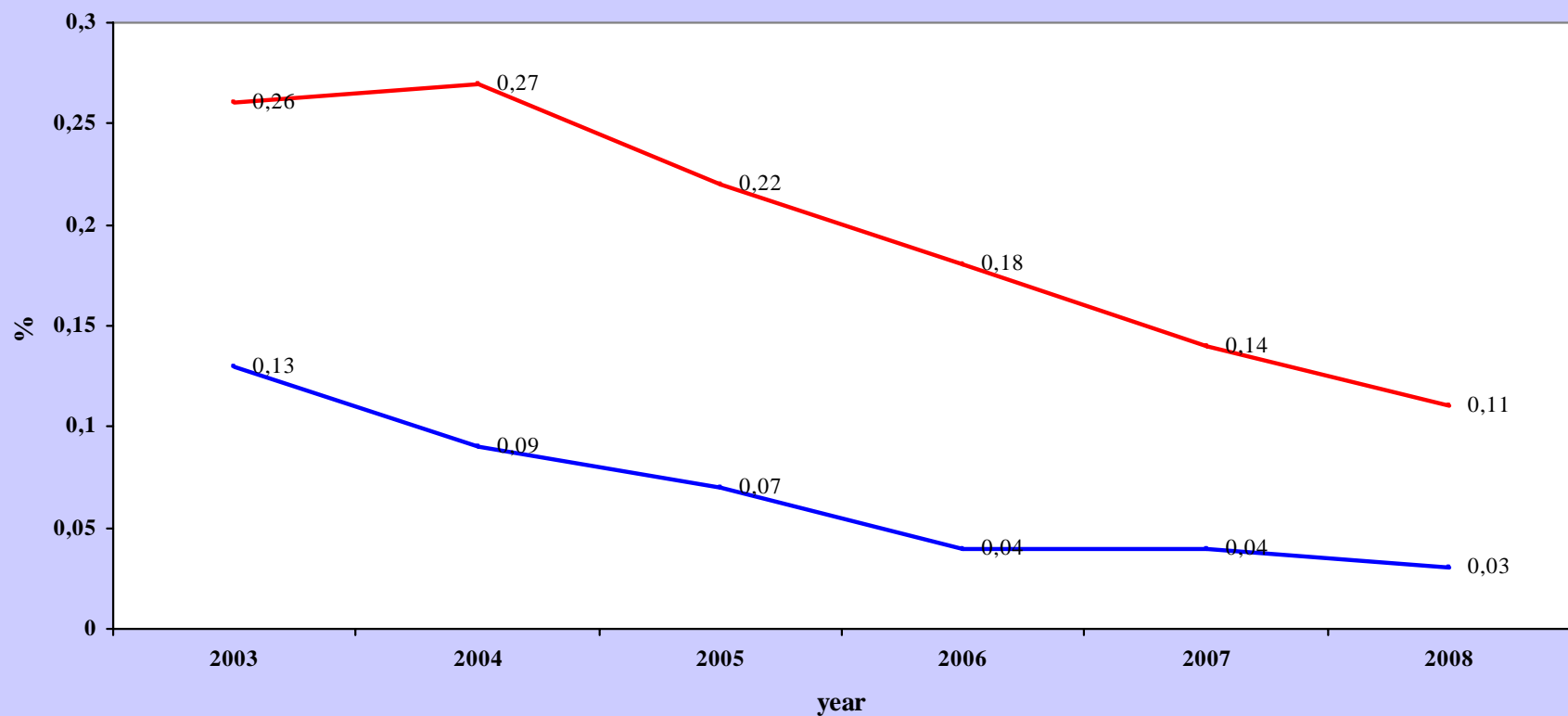


— % of positive herds — % of positive animals

bovine tuberculosis eradication programme in Portugal

% positive herds / % positive animals

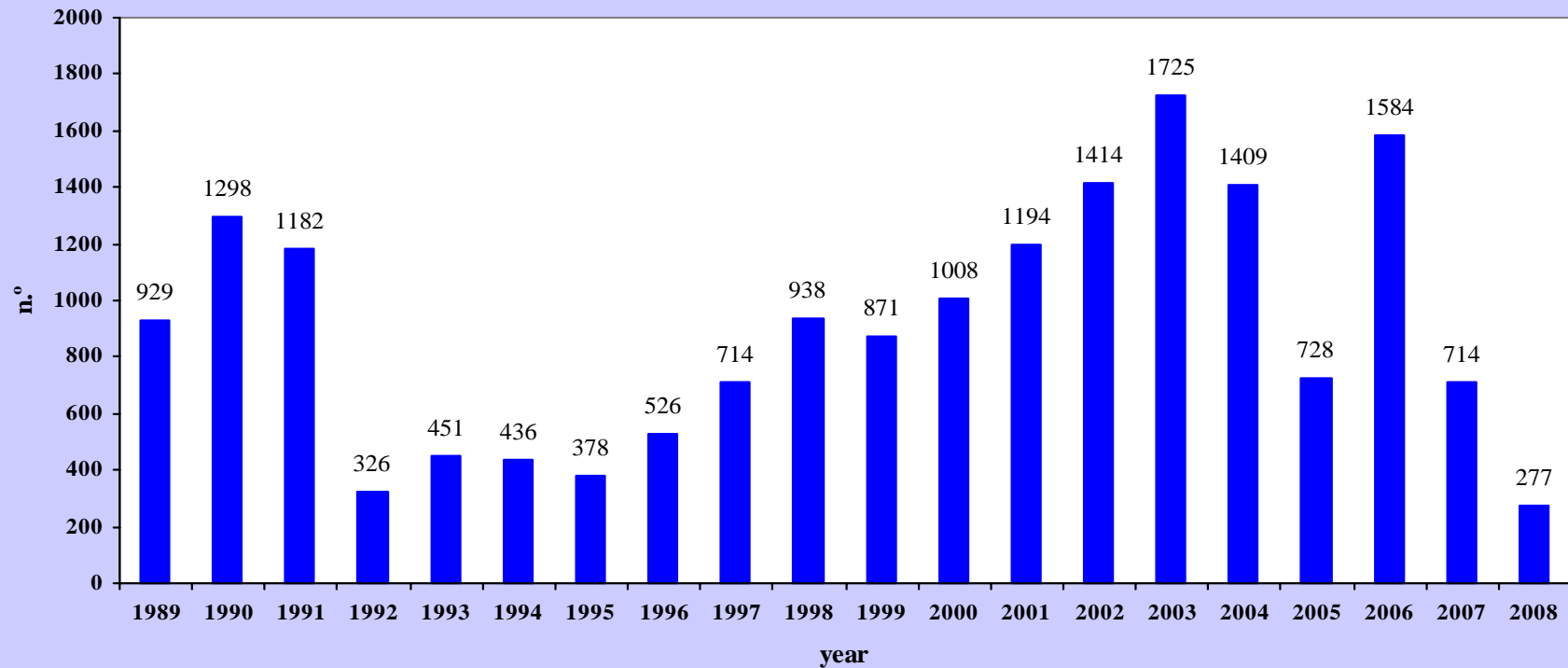
2003 - 2008



— % of positive herds — % of positive animals

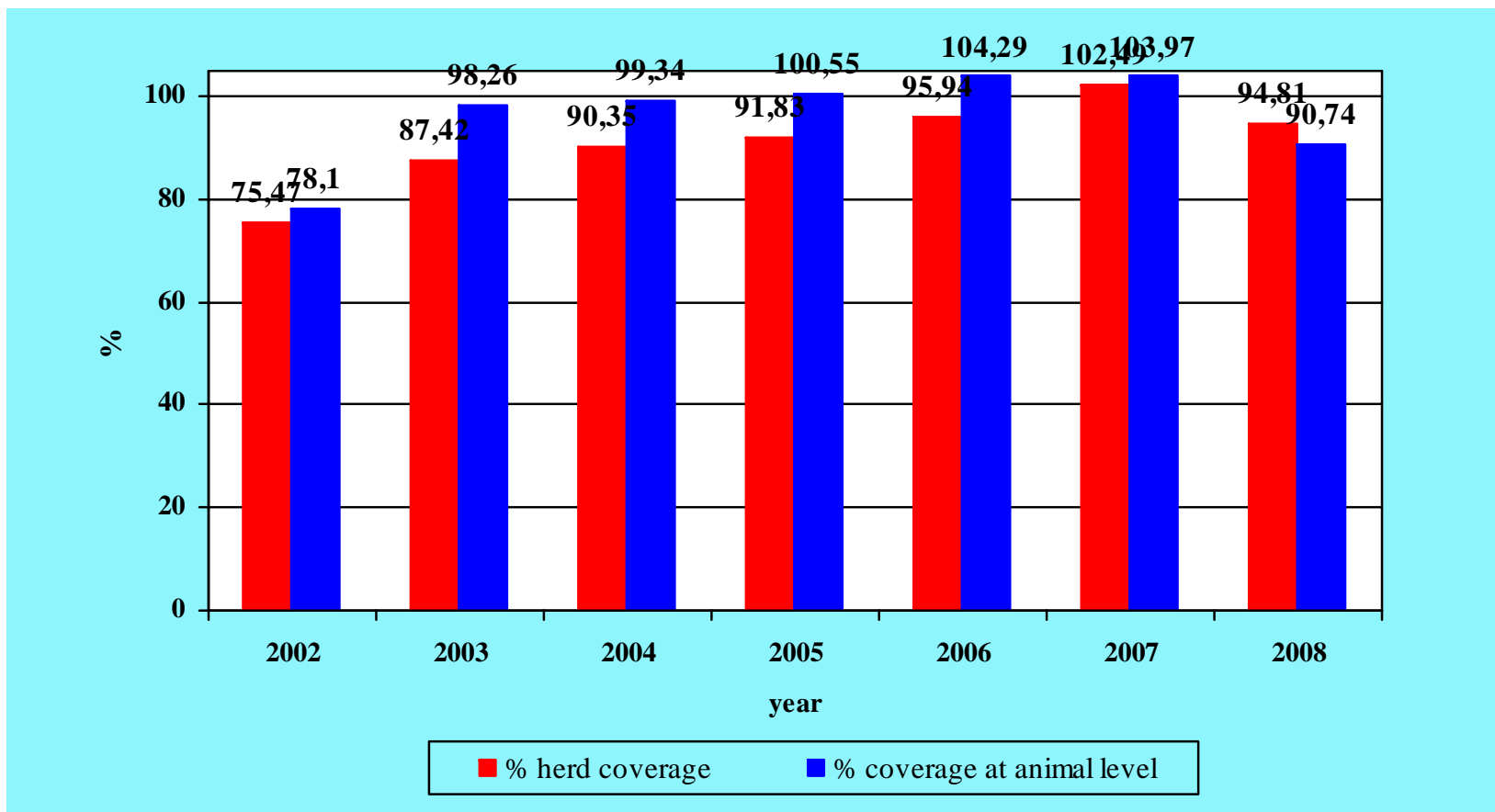
bovine tuberculosis eradication programme in Portugal historic of the n.º of slaughtered animals

1989 - 2008



bovine tuberculosis eradication programme in Portugal

% herd coverage / % coverage at animal level
2002 - 2008



Aspects of the eradication programme for bovine tuberculosis in Portugal that have gone beyond the requirements of Community legislation

- bovine herds confirmed as infected with tuberculosis (T2.1), animals with inconclusive reaction to comparative intradermal tuberculin test (IDT), are equally slaughtered, if there also exists a positive animal at the same herd.

that is: if herd T2.1 with 1Bov (+) and 1Bov (inconc.) → both are slaughtered

- For an infected herd (T2.1), to recover the officially free status (T3), all animals over 6 weeks of age have to react negatively to:
 1. One comparative IDT, 42 days after the elimination of the last positive animal.
 2. Two consecutive comparative IDT applied during an interval of minimum 60 days.
 3. One comparative IDT, 6 months after the previous test.

(A TOTAL OF 4 CONTROLS)

conclusions

- Proactive attitude (decision before bacteriological results)
- Epidemiological evaluation at regional level for in time decision
- Involvement of the stakeholders
- Reinforce stamping-out

Thank you