



# Q fever in the Netherlands



Living  
off the land,  
caring  
for nature.



Ministry of Agriculture, Nature and  
Food Quality

# Q fever in the Netherlands

Jan Bloemendal  
SCoFCAH  
July 1st, 2010



# Introduction

- Animal Q fever
- Human Q fever
- Expert advice on Q fever
- Measures
  - ➔ Non-infected farms
  - ➔ Former infected farms





# Animal Q fever

Infected farms in the Netherlands:

- Number of outbreaks March 2010: 76
- Number of outbreaks June 2010: 89

Number of culled animals:

- 50.355 pregnant goats
- 1.468 male goats



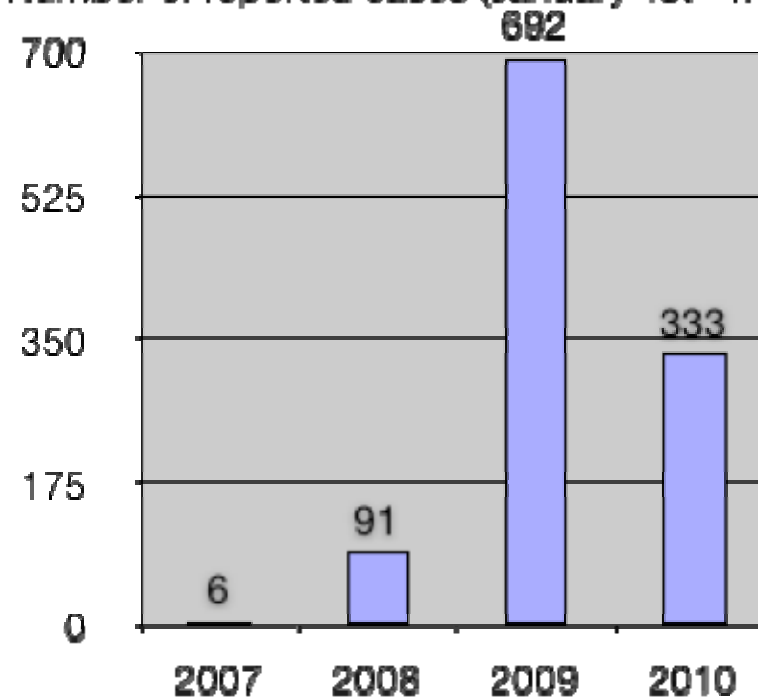


# Human Q fever

Number of human patients:

- 2009: 2.355
- 2010: 276  
(until June 29th)

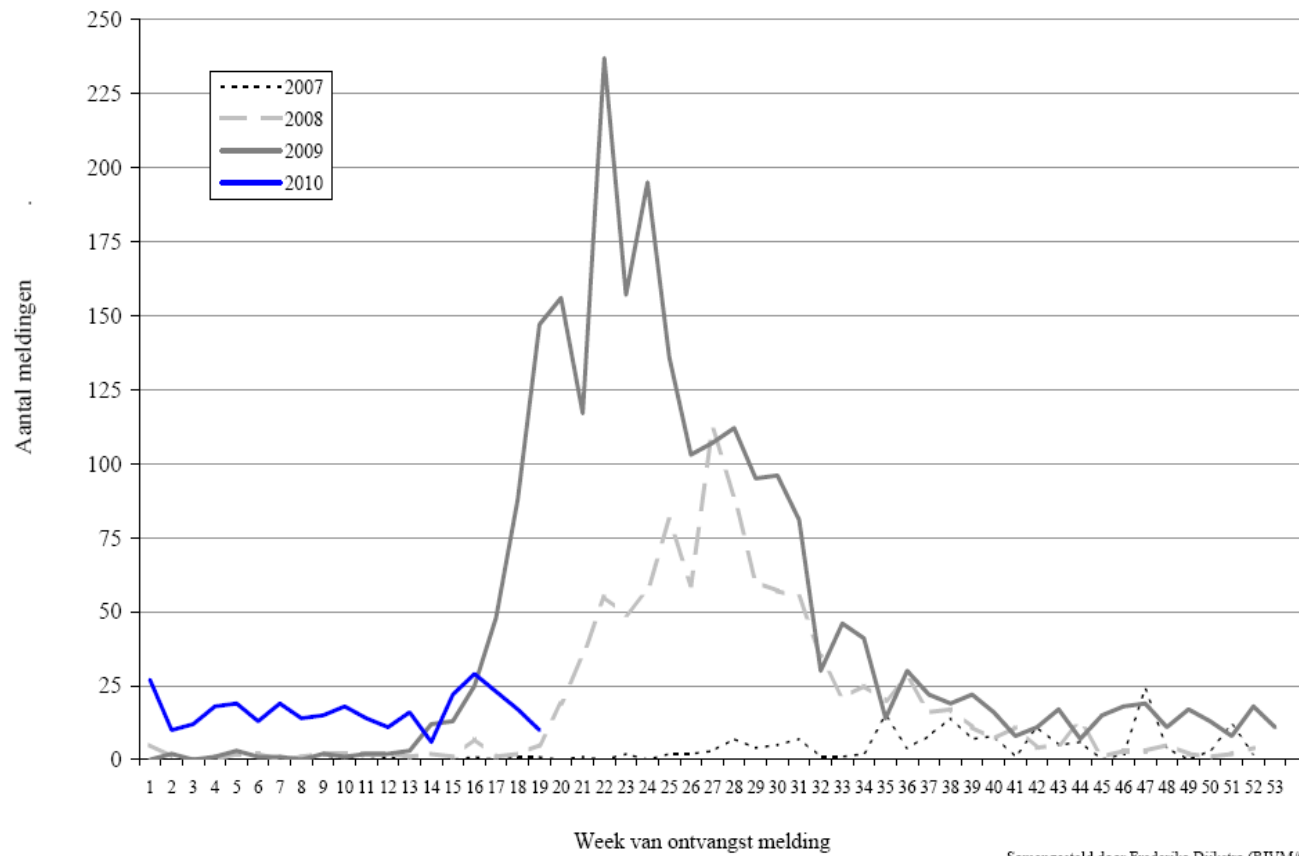
Number of reported cases (January 1st - May 25th)





# Human Q fever

## Number of reported human patients

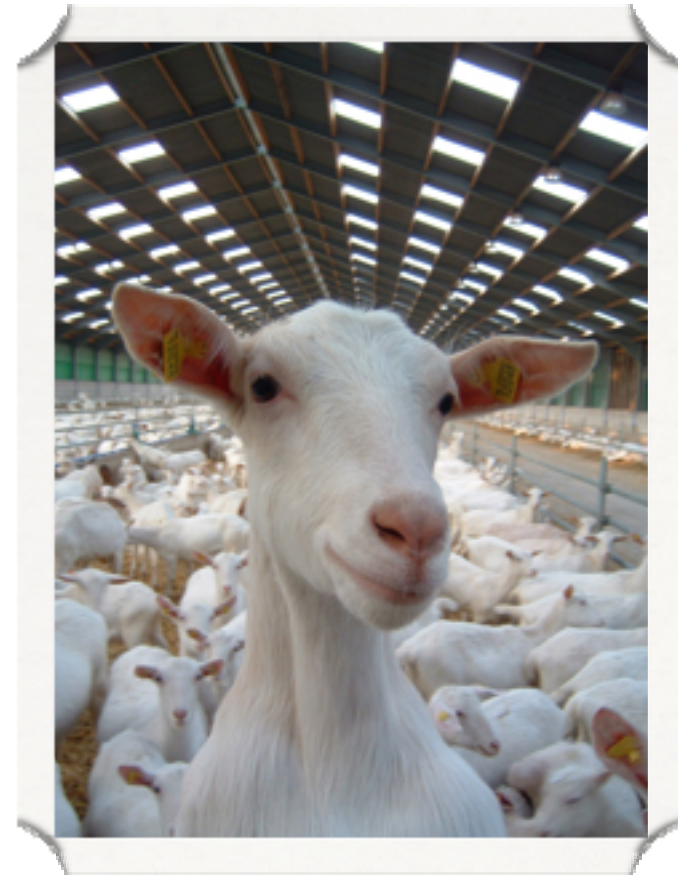


Samengesteld door Frederika Dijkstra (RIVM/Cib/EPI)



## Expert advice on Q fever

- Advice of Dutch experts in line with scientific advice EFSA





## Expert advice on Q fever: hygiene and vaccination

- Hygiene:
  - ➔ Current measures concerning hygiene and manure should be maintained
  - ➔ Current measures for farms with a public function do not need intensification
- Vaccination
  - ➔ Vaccination campaign will lead to a significant reduction of dispersion of *Coxiella burnetii*
  - ➔ Vaccination campaign should be continued the coming years



# Expert advice on Q fever: bulk milk monitoring and breeding and transport restrictions

- Bulk milk monitoring:
  - ➔ Bulk milk monitoring should be maintained, but;
  - ➔ Frequency of bulk milk monitoring at non-infected farms can be decreased
- Breeding and transport restrictions:
  - ➔ The breeding and transport restrictions on non-infected farms can be ended



## Expert advice on Q fever: expansion restrictions

- Expansion restrictions:
- Expansion restrictions should be maintained until June 2011





## Measures on non-infected farms

- The breeding and transport restrictions end on July 15th





## Measures on former infected farms

- Lifelong breeding restrictions
- Transport restrictions end on August 15th
  - Depends on outcome research on vaccination
  - Repopulation with fully vaccinated animals
  - Responsibility of the sector
- Compensation





Thank you

