

Impact of fisheries in habitats and species. How to minimise it?

Giles Bartlett
Fishery Policy Officer
WWF-UK



- What Marine Protected Areas (MPAs) can do for fisheries impact mitigation (conservation)
- 3 examples of MPAs that the NGO's have been involved in
 - Rockall Bank
 - Ekofish Plaice fishery MSC certification (Netherlands)
 - NSRAC Nephrops LTMP
- Some of the challenges for the future



What can MPAs do for conservation

- Essentially a tool to protect biodiversity – not a silver bullet, but an essentially part of a LTMPs, particularly where multi-species and multi-gear fisheries exist – used to mitigate specific and cumulative impacts
- Reduce negative impacts on seabed habitats and features
- Protect a range of species, including rare and threatened
- When developed as part of a network they can protect the wider ecosystem functioning and processes – on which the fisheries depend



Rockall Bank – A case study demonstrating stakeholder collaboration to protect vulnerable habitats

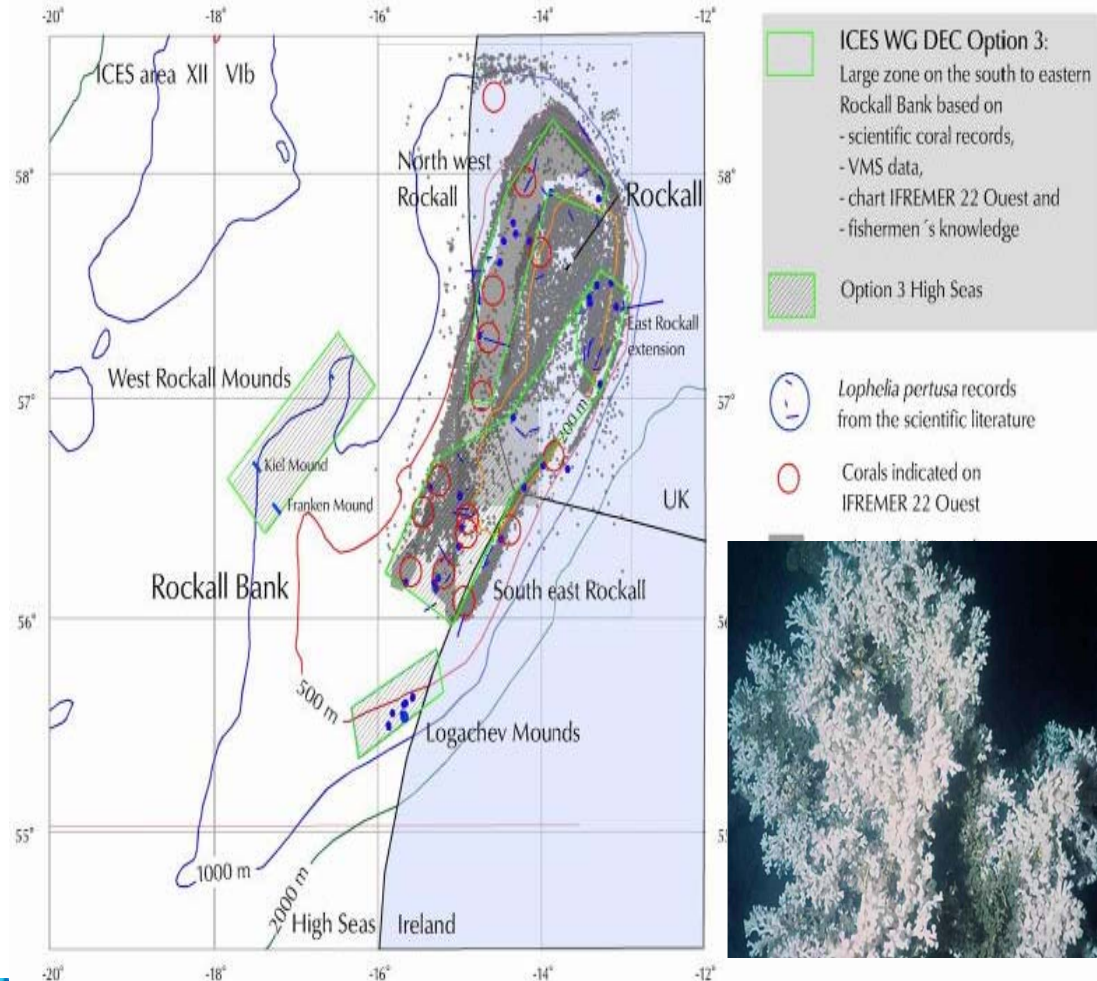
- To protect the lophellia coral reefs found at the NW of the Rockall Bank (200 miles west of Scotland)
- To accurately define and map the areas of coral
- To avoid closing areas of NW Rockall to fishing where there are no coral present
- To prohibit bottom trawling or bottom set fishing gear in the defined area of coral



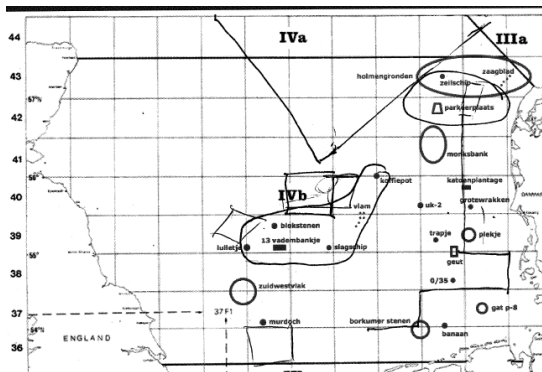
Rockall Bank – The SFF & WWF Working Together to Achieve Acceptable Outcomes 2006

Best available information supported the designation:

- VMS Data (provided by Jason Hall-Spencer)
- Fishermen’s Charts and knowledge
- Scientific survey data provided by FRS, JNCC and other bodies
- Geological data from the BGS and other institutes



EKOFISH Group Plaice MSC Certification



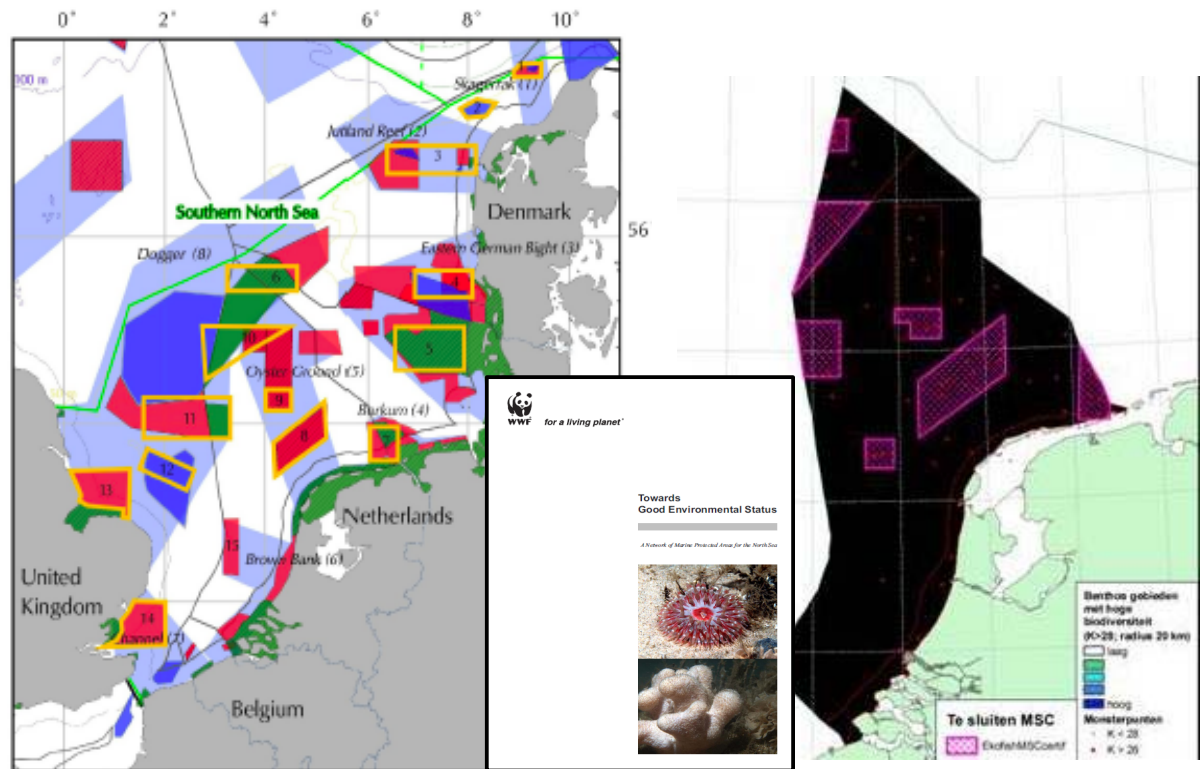
- EKOFISH Intensive cooperation with fishermen; agreement on 7 closed areas for protection of seabed / benthos, commitment to implement CCTV, further reduction of bycatch through development of more selective gear.
- Additional no-trawl areas additional to those that were required in the assessment
- EKOFISH claimed only a very small percentage of catch is Cod 5 (35-46 cm) less than 5% of total cod catch; however evidence to be provided for this in 2010
- Rest of trawling fleet will start MSC 2010, of which OSPREY is first one. Cod bycatch issues will be addressed.



Proposal for No-Trawl Areas as part of MSC Certification

In 2009, WWF proposed closed areas in Dutch EEZ, as we needed time to develop priority areas in German, UK and Danish EEZ's (Southern North Sea) closures are required to support conservation objectives.

Areas across the other EEZ's proposed in June, 2010 and discussions are ongoing with Ekofish and Osprey clients to have these included in those assessments.



Supporting Work - Monitoring and Compliance



Proposal -

Video monitoring Pilot within 6 months (to monitor bycatch, discarding, interactions with Protected Endangered or Threatened species etc). Participate in study on possibilities of large scale implementation of video monitoring in demersal fleet.



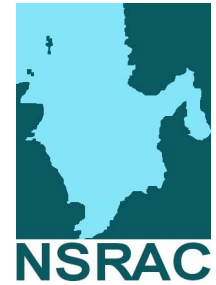
NSRAC Nephrops LTMP



- Ecological impacts of nephrops fishing is the critical issue for NGO's – mitigation, limits and targets to minimise footprint the fishery on species and habitats
- Working Group has agreed to include representative MPAs with the plan
- Locations of sites and coverage is to be agreed
- Sites could be within existing or planned MPAs to reduce additional burden
- Stakeholder led approach is important
- Must be compatible with the rest other objectives of the plan and consider inter-dependencies with other fisheries – assist with achieving GES for the Regional Sea
- Need to ensure designations are applicable to all Member States through new Regulation



NSRAC Nephrops LTMP Ecological Targets



- Maintain a limit to the effort applied in the fishery to limit overall environmental impact
- Monitor discarding and associated impacts e.g. effects on discard-dependent seabird communities
- Assess impacts on seabed habitat and associated species communities, including benthic communities – develop mitigation strategies
- Develop management measures to avoid interactions with endangered, threatened and protected species
- Identify and implement Marine Protected Areas, including “real time”, seasonal and permanent closed areas



The MPA Challenge for the Fishing Industry

- Need for greater understanding on why MPAs are needed, the different types, and what they are trying to deliver
- Understanding - NOT all MPAs will be no take or highly protected – selective or low impact fishing may be allowed
- To develop LTMPs that reflect the new spatial reality
- Opportunities to fish more selectively – by adapting or changing fishing methods access will still be allowed in many sites
- Accept and engage in developing the sites and the network – the industry has a crucial role to play and must engage in the process e.g. English Regional Seas project

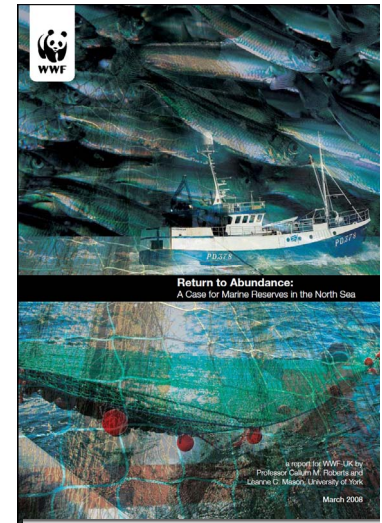
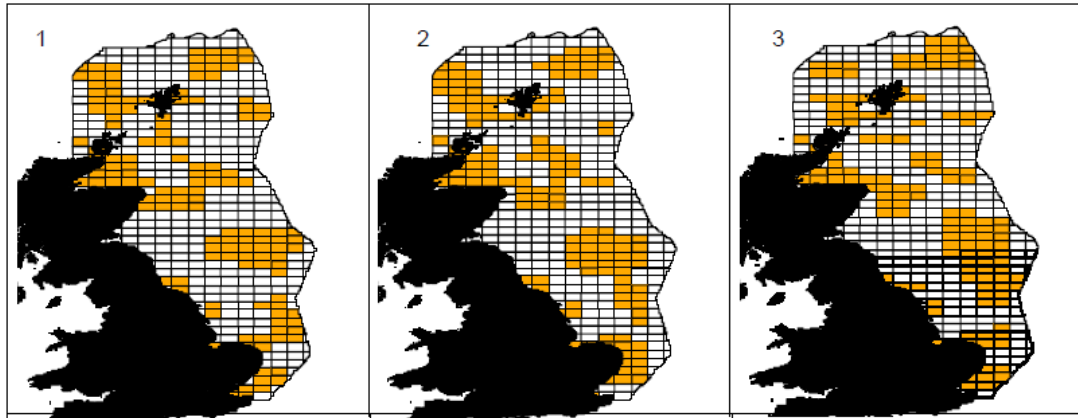


The MPA Challenge for the Fishing Industry

- MPA role in monitoring impacts of fishing activities
- Their potential for monitoring fishing mortality (sedentary species)
- The importance of establishing a network across a regional sea – healthy ecosystems support productive fisheries
- To engage fully in the planning process to ensure that their knowledge is used in site and network development – top down site selection is not ideal and is less likely to be respected by users
- Champion the case that sites must be apply to all MS fleets (non-discriminatory)



Future Challenges – Developing the Network Across Fisheries and Sectors



- Need better and more data including fishing and Ecological data – across all Member States – with improved access to practitioners
- Consistent approaches to network development and monitoring of the sites, network and wider regional sea ecosystem





A Network of MPAs - a key component for a Integrated Sea Use Management system based upon Marine Spatial Plans



- Sector by sector approach ,
- Greater collaboration between authorities at the Regional Level
- Greater stakeholder involvement

- Joined up legislative framework - CFP & MSFD
- Need political will and understanding
- Weak and/or uncoordinated goals





Links to reports cited and referred to in this presentation can be found

http://wwf.panda.org/what_we_do/footprint/smart_fishing/fishing_news/fisheries_publication_archive.cfm?160201/Towards-Good-Environmental-Status---A-Network-of-Marine-Protected-Areas-for-the-North-Sea

http://www.wwf.org.uk/filelibrary/pdf/marine_reserves_north_sea.pdf

http://assets.wwf.org.uk/downloads/discard_reduction.pdf

http://assets.panda.org/downloads/ltmp_full_final.pdf

