



European Commission

Eurostat – Unit F.5: Education, health, social protection

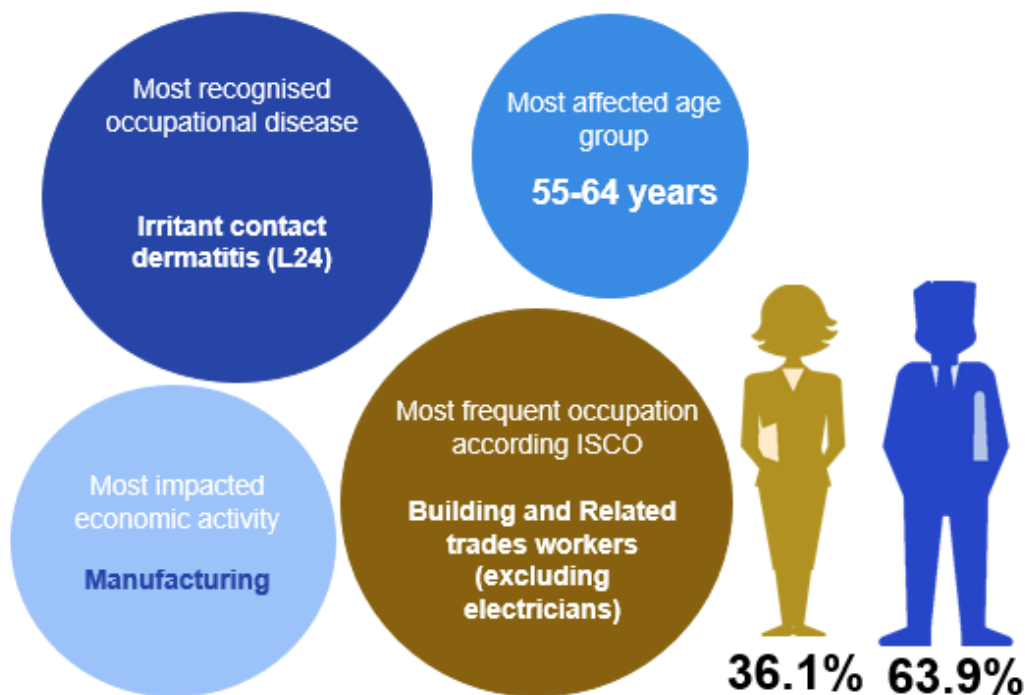
## European occupational diseases statistics (EODS) – experimental statistics – Country profile: **Denmark**

### Introduction

European occupational diseases statistics (EODS) are essential elements for the European Commission's strategy to assess the efficiency of Community legislation on health and safety at work. At present, EODS are experimental statistics. Beyond their occurrence, these statistics reflect the way in which the concept of occupational disease is integrated into the national social security or health systems.

This country profile is based on the EODS short list of occupational diseases. It presents information about the occupational diseases at national level. (as aggregated data for the signalled period).

**Figure 1 – Occupational diseases in a nutshell, 2013-2021**

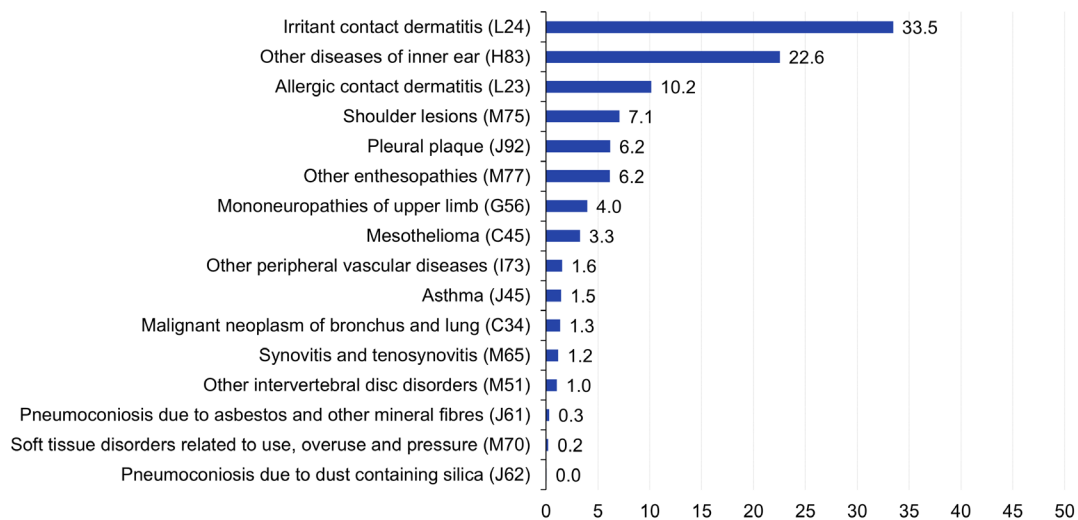


Source: Eurostat EODS extraction

# Recognised cases of occupational diseases in EODS short list

**Figure 2 – Distribution of the diseases in the short list, 2013-2021**

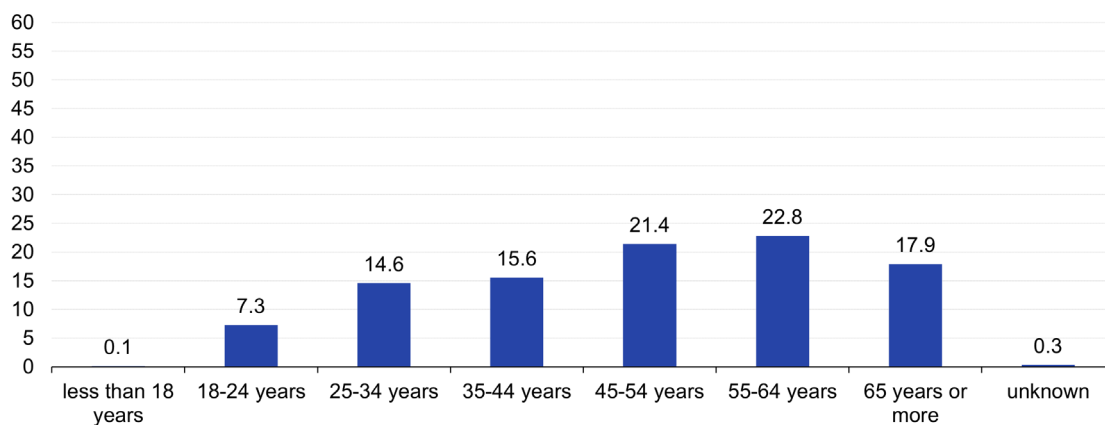
(in %)



Source: Eurostat EODS extraction

**Figure 3 – Distribution of occupational diseases in the short list by age group, 2013-2021**

(in %)



Source: Eurostat EODS extraction

**Table 1 – Most impacted economic activity (NACE) of EODS short list, 2013-2021**

(in %)

Economic activities (NACE Rev 2)	NACE code	Percentage
Specialised construction activities	43	14.4%
Human health activities	86	6.7%
Public administration and defence; compulsory social security	84	6.5%
Manufacture of food products	10	6.2%
Residential care activities	87	5.1%

Source: Eurostat EODS extraction

## Definition

An occupational disease is a disease that is caused by the work or working conditions. The disease may develop due to short or long-term exposures. This means that the disease must have developed due to exposures in the workplace and that correlation between the exposures and the disease is well known in medical research. Or put in another way, it must not be likely beyond reasonable doubt, that the disease was caused by factors other than work.

## Useful links

- [Experimental statistics – EODS section on Eurostat website](#)
- [EODS short list](#) (PDF)
- [Data](#) (Excel file)
- [Metadata](#) (Excel file)
- [Methodological note](#) (PDF)