

141/2017 - 15 September 2017

July 2017

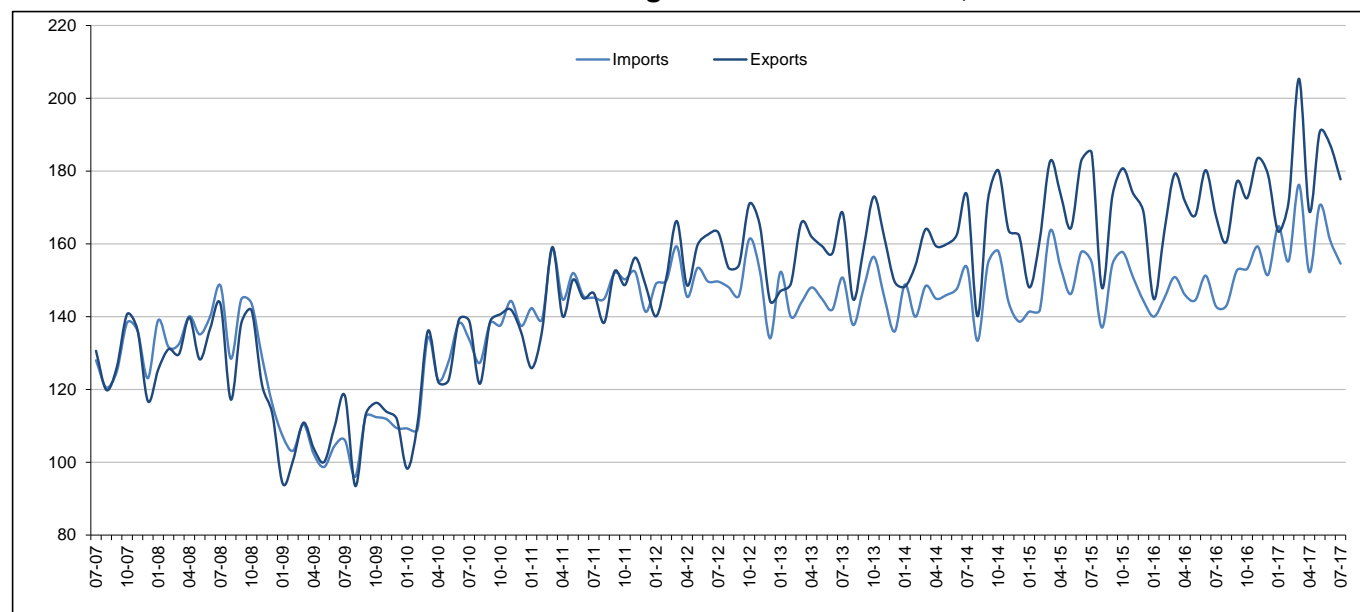
**Euro area international trade in goods surplus****€23.2 bn**

€8.8 bn surplus for EU28

**Euro area**

The first estimate for **euro area** (EA19) exports of goods to the rest of the world in July 2017 was €177.7 billion, an increase of 6.1% compared with July 2016 (€167.6 bn). Imports from the rest of the world stood at €154.6 bn, a rise of 8.2% compared with July 2016 (€142.8 bn). As a result, the **euro area** recorded a €23.2 bn surplus in trade in goods with the rest of the world in July 2017, compared with +€24.8 bn in July 2016. **Intra-euro area** trade rose to €145.6 bn in July 2017, up by 5.6% compared with July 2016.

These data are released by **Eurostat, the statistical office of the European Union.**

**International trade in goods of the euro area, € bn**

In January to July 2017, **euro area** exports of goods to the rest of the world stood at €1 265.1 bn (an increase of 7.7% compared with January-July 2016) and imports at €1 135.0 bn (an increase of 11.2% compared with January-July 2016). As a result, the **euro area** recorded a surplus of €130.2 bn, compared with +€154.1 bn in January-July 2016. **Intra-euro area** trade rose to €1 074.0 bn in January-July 2017, up by 7.3% compared with January-July 2016.

**EA19 trade - non seasonally adjusted data****bn €**

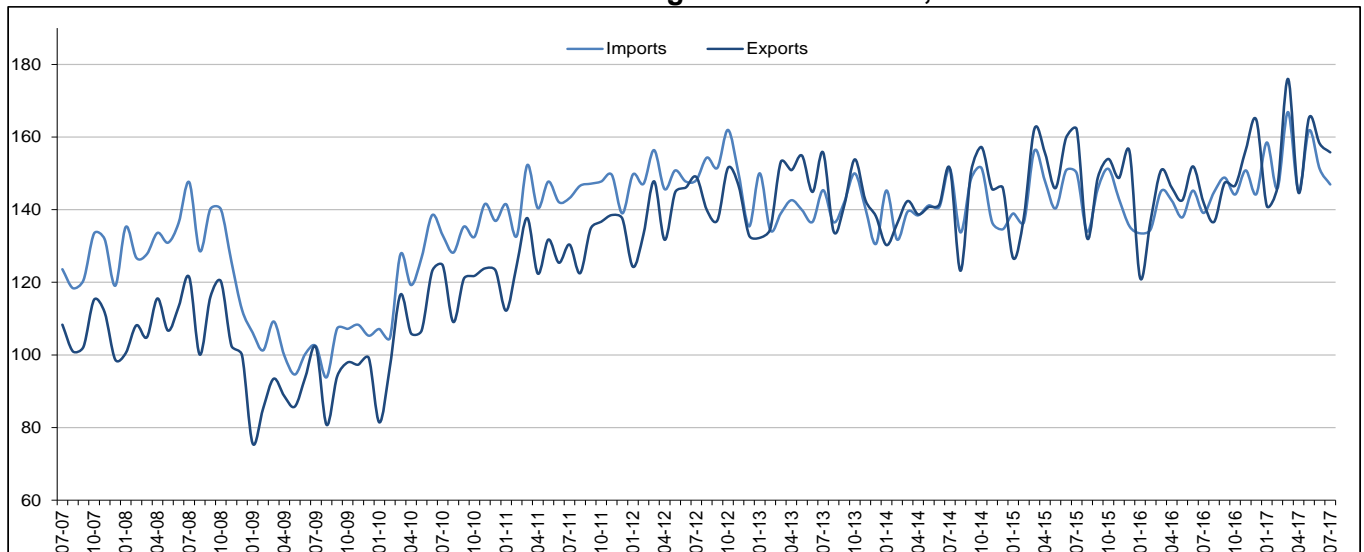
Flows	Jul 16	Jul 17	Growth	Jan-Jul 16	Jan-Jul 17	Growth
Extra-EA19 exports	167.6	177.7	6.1%	1 174.7	1 265.1	7.7%
Extra-EA19 imports	142.8	154.6	8.2%	1 020.6	1 135.0	11.2%
Extra-EA19 trade balance	24.8	23.2		154.1	130.2	
Intra-EA19 trade	137.9	145.6	5.6%	1 000.7	1 074.0	7.3%

The source dataset is available [here](#).

## European Union

The first estimate for **extra-EU28** exports of goods in July 2017 was €155.8 billion, up by 9.7% compared with July 2016 (€142.1 bn). Imports from the rest of the world stood at €146.9 bn, up by 5.6% compared with July 2016 (€139.1 bn). As a result, the **EU28** recorded a €8.8 bn surplus in trade in goods with the rest of the world in July 2017, compared with +€3.0 bn in July 2016. **Intra-EU28** trade rose to €260.3 bn in July 2017, +5.3% compared with July 2016.

International trade in goods of the EU28, € bn



In January to July 2017, **extra-EU28** exports of goods stood at €1 087.3 bn (an increase of 9.6% compared with January-July 2016) and imports at €1 076.5 bn (an increase of 10.1% compared with January-July 2016). As a result, the **EU28** recorded a surplus of €10.8 bn, compared with +€14.0 bn in January-July 2016. **Intra-EU28** trade rose to €1 938.3 bn in January-July 2017, +6.9% compared with January-July 2016.

### EU28 trade - non seasonally adjusted data

bn €

Flows	Jul 16	Jul 17	Growth	Jan-Jul 16	Jan-Jul 17	Growth
Extra-EU28 exports	142.1	155.8	9.7%	991.8	1 087.3	9.6%
Extra-EU28 imports	139.1	146.9	5.6%	977.9	1 076.5	10.1%
Extra-EU28 trade balance	3.0	8.8		14.0	10.8	
Intra-EU28 trade	247.3	260.3	5.3%	1 813.6	1 938.3	6.9%

The source dataset is available [here](#).

### Main products - EU28

bn €

	Extra-EU28 exports			Extra-EU28 imports			Trade balance	
	Jan-Jul 16	Jan-Jul 17	Growth	Jan-Jul 16	Jan-Jul 17	Growth	Jan-Jul 16	Jan-Jul 17
<b>Total</b>	<b>991.8</b>	<b>1 087.3</b>	<b>9.6%</b>	<b>977.9</b>	<b>1 076.5</b>	<b>10.1%</b>	<b>14.0</b>	<b>10.8</b>
<b>Primary goods:</b>	<b>129.1</b>	<b>154.6</b>	<b>19.7%</b>	<b>244.5</b>	<b>308.4</b>	<b>26.1%</b>	<b>-115.4</b>	<b>-153.8</b>
<i>Food &amp; drink</i>	65.2	68.8	5.5%	63.2	66.1	4.5%	2.0	2.7
<i>Raw materials</i>	24.7	29.6	19.9%	39.4	46.8	18.7%	-14.7	-17.2
<i>Energy</i>	39.3	56.3	43.3%	141.9	195.5	37.8%	-102.6	-139.2
<b>Manufactured goods:</b>	<b>832.6</b>	<b>896.5</b>	<b>7.7%</b>	<b>685.9</b>	<b>734.5</b>	<b>7.1%</b>	<b>146.7</b>	<b>162.0</b>
<i>Chemicals</i>	181.0	196.6	8.6%	110.0	116.3	5.7%	71.0	80.3
<i>Machinery &amp; vehicles</i>	422.5	453.3	7.3%	315.3	340.1	7.9%	107.2	113.2
<i>Other manuf'd goods</i>	229.1	246.5	7.6%	260.6	278.1	6.7%	-31.5	-31.5
<b>Other</b>	<b>30.2</b>	<b>36.2</b>	<b>20.2%</b>	<b>47.5</b>	<b>33.6</b>	<b>-29.2%</b>	<b>-17.3</b>	<b>2.6</b>

The source dataset is available [here](#).

### Main trading partners - EU28

bn €

	EU28 exports to			EU28 imports from			Trade balance	
	Jan-Jul 16	Jan-Jul 17	Growth	Jan-Jul 16	Jan-Jul 17	Growth	Jan-Jul 16	Jan-Jul 17
<b>United States</b>	210.7	219.6	4.3%	145.9	151.8	4.1%	64.8	67.8
<b>China</b>	95.8	113.5	18.6%	192.7	206.9	7.4%	-96.9	-93.4
<b>Switzerland</b>	79.7	91.4	14.7%	72.1	64.4	-10.7%	7.6	27.0
<b>Russia</b>	39.7	48.8	23.0%	65.7	85.4	30.0%	-26.0	-36.6
<b>Turkey</b>	45.9	48.4	5.5%	38.9	41.1	5.5%	7.0	7.4
<b>Japan</b>	32.2	35.0	9.0%	38.5	41.3	7.3%	-6.4	-6.3
<b>Norway</b>	27.7	29.2	5.5%	35.3	45.3	28.2%	-7.6	-16.1
<b>South Korea</b>	24.6	28.5	15.8%	24.1	29.3	21.4%	0.5	-0.7
<b>India</b>	21.9	23.8	8.6%	23.4	26.5	13.6%	-1.5	-2.7
<b>Canada</b>	20.2	22.2	9.8%	16.3	18.5	13.2%	3.9	3.7

The source dataset is available [here](#).

## Member States' total trade (intra-EU + extra-EU)

bn €

	Total exports						Total imports						Trade balance					
	Total		Intra-EU		Extra-EU		Total		Intra-EU		Extra-EU		Total		Intra-EU		Extra-EU	
	Jan-Jul 17	Growth / Jan-Jul 16	Jan-Jul 17	Growth / Jan-Jul 16	Jan-Jul 17	Growth / Jan-Jul 16	Jan-Jul 17	Growth / Jan-Jul 16	Jan-Jul 17	Growth / Jan-Jul 16	Jan-Jul 17	Growth / Jan-Jul 16	Jan-Jul 17	Jan-Jul 16	Jan-Jul 17	Jan-Jul 16	Jan-Jul 17	Jan-Jul 16
<b>Belgium</b>	219.6	5%	157.4	4%	62.2	7%	204.0	4%	129.6	5%	74.4	2%	15.6	13.5	27.8	28.7	-12.2	-15.2
<b>Bulgaria</b>	15.1	15%	9.9	10%	5.2	25%	17.0	18%	10.8	11%	6.2	31%	-1.9	-1.3	-0.9	-0.8	-1.0	-0.5
<b>Czech Republic</b>	90.8	7%	76.1	6%	14.7	9%	81.0	10%	63.4	8%	17.6	16%	9.9	11.3	12.7	12.9	-2.9	-1.6
<b>Denmark</b>	52.4	6%	31.9	5%	20.5	8%	46.7	7%	32.7	4%	14.0	15%	5.6	5.9	-0.9	-1.0	6.5	6.9
<b>Germany</b>	743.9	6%	437.0	6%	306.8	7%	599.6	9%	394.4	8%	205.2	12%	144.2	150.4	42.7	47.3	101.6	103.0
<b>Estonia</b>	7.3	10%	5.3	6%	2.0	20%	8.6	11%	6.9	9%	1.7	20%	-1.3	-1.1	-1.6	-1.4	0.4	0.3
<b>Ireland</b>	70.2	6%	35.5	5%	34.7	8%	41.7	2%	28.1	5%	13.6	-4%	28.5	25.0	7.4	7.0	21.1	17.9
<b>Greece</b>	16.6	17%	9.1	9%	7.5	28%	29.8	18%	15.1	8%	14.7	30%	-13.1	-11.0	-6.0	-5.6	-7.2	-5.5
<b>Spain</b>	166.5	9%	111.0	8%	55.6	10%	180.6	12%	107.1	6%	73.5	20%	-14.1	-8.8	3.9	1.9	-18.0	-10.7
<b>France</b>	274.8	4%	163.8	3%	110.9	6%	324.3	8%	225.3	8%	99.0	8%	-49.5	-35.9	-61.5	-49.0	12.0	13.1
<b>Croatia</b>	7.9	15%	5.1	11%	2.8	23%	12.7	12%	9.8	10%	2.9	21%	-4.8	-4.4	-4.7	-4.4	0.0	0.0
<b>Italy</b>	263.3	8%	148.2	7%	115.1	8%	237.7	11%	140.6	9%	97.1	14%	25.6	31.1	7.6	9.8	18.0	21.4
<b>Cyprus</b>	1.6	-2%	0.6	-33%	1.0	41%	4.2	3%	2.7	-9%	1.5	32%	-2.6	-2.5	-2.1	-2.0	-0.5	-0.5
<b>Latvia</b>	6.7	12%	4.6	10%	2.1	16%	8.3	16%	6.5	13%	1.8	29%	-1.6	-1.1	-1.9	-1.5	0.3	0.4
<b>Lithuania</b>	14.7	17%	8.7	12%	6.0	25%	16.3	16%	11.4	15%	4.8	20%	-1.6	-1.4	-2.7	-2.2	1.2	0.8
<b>Luxembourg</b>	8.4	-3%	7.0	-3%	1.4	-7%	11.7	3%	9.7	10%	2.0	-24%	-3.3	-2.7	-2.7	-1.6	-0.6	-1.1
<b>Hungary</b>	58.1	10%	47.0	8%	11.1	16%	54.6	13%	41.4	10%	13.1	23%	3.6	4.7	5.6	5.8	-2.0	-1.1
<b>Malta</b>	1.2	-32%	0.7	7%	0.5	-53%	3.1	-16%	1.9	7%	1.2	-37%	-1.9	-1.9	-1.2	-1.1	-0.7	-0.8
<b>Netherlands</b>	329.0	13%	247.2	11%	81.8	19%	289.2	12%	134.1	9%	155.2	15%	39.8	32.6	113.2	98.6	-73.4	-66.1
<b>Austria</b>	86.3	8%	61.6	9%	24.7	7%	89.6	9%	69.0	8%	20.6	13%	-3.3	-2.3	-7.4	-7.2	4.1	5.0
<b>Poland</b>	115.5	10%	91.6	9%	23.9	12%	114.8	13%	81.3	10%	33.5	21%	0.6	3.8	10.2	10.1	-9.6	-6.3
<b>Portugal</b>	32.4	11%	24.1	7%	8.3	22%	39.8	14%	30.3	11%	9.6	27%	-7.5	-5.6	-6.2	-4.8	-1.3	-0.8
<b>Romania</b>	36.1	9%	27.4	10%	8.7	8%	42.9	13%	32.6	10%	10.4	22%	-6.8	-5.1	-5.2	-4.7	-1.7	-0.4
<b>Slovenia</b>	19.6	13%	14.9	13%	4.7	14%	18.3	15%	12.7	13%	5.6	21%	1.3	1.4	2.2	1.9	-0.9	-0.5
<b>Slovakia</b>	42.4	7%	36.2	7%	6.2	10%	41.5	9%	33.2	8%	8.4	13%	0.9	1.3	3.0	3.1	-2.1	-1.8
<b>Finland</b>	34.7	16%	20.7	17%	14.0	15%	35.5	14%	25.0	8%	10.5	29%	-0.8	-1.3	-4.3	-5.3	3.4	4.0
<b>Sweden</b>	77.9	8%	45.9	8%	32.0	9%	77.6	8%	54.9	7%	22.7	11%	0.3	0.2	-8.9	-8.6	9.3	8.7
<b>United Kingdom</b>	232.6	10%	109.7	6%	122.9	12%	327.4	-2%	171.6	1%	155.9	-5%	-94.8	-121.2	-61.8	-66.7	-33.0	-54.5

The source dataset is available [here](#).

## Geographical information

The **euro area** (EA19) includes Belgium, Germany, Estonia, Ireland, Greece, Spain, France, Italy, Cyprus, Latvia, Lithuania, Luxembourg, Malta, the Netherlands, Austria, Portugal, Slovenia, Slovakia and Finland.

The **European Union** (EU28) includes Belgium, Bulgaria, the Czech Republic, Denmark, Germany, Estonia, Ireland, Greece, Spain, France, Croatia, Italy, Cyprus, Latvia, Lithuania, Luxembourg, Hungary, Malta, the Netherlands, Austria, Poland, Portugal, Romania, Slovenia, Slovakia, Finland, Sweden and the United Kingdom.

## Methods and definitions

Since the introduction of Intrastat for intra-EU trade on 1 January 1993, the value of dispatches has been consistently higher than that of arrivals. In theory, as dispatches are declared FOB and arrivals CIF, the value of arrivals should be slightly higher than that of dispatches. Eurostat uses dispatches as the more reliable measure of total intra-EU trade as, at aggregated levels, total dispatches has better coverage than total arrivals. Due to this divergence in intra-EU trade, and to the difficulties of interpreting figures in absolute terms at the level of individual Member States, trade balances for individual Member States must be interpreted with caution. The same caution applies to the trade balance of the euro area, which includes some intra-EU trade.

National concepts may differ from the harmonised methodology used by Eurostat, leading to differences between figures in this release and those published nationally, both for raw data and for seasonally adjusted series.

Products are classified according to the Standard international trade classification (SITC), Revision 4.

## Revisions and timetable

This News Release is based on data available on 12 September 2017. These are provisional figures based on information provided by Member States. They are subject to frequent revision for up to two years after the month in question.

## For more information

Eurostat website section on international trade in goods

Eurostat database section on international trade in goods

Eurostat Statistics Explained article on international trade in goods statistics

Eurostat €-indicators release calendar

Issued by: **Eurostat Press Office**

**Vincent BOURGSAIS**  
Tel: +352-4301-33 444  
[eurostat-pressoffice@ec.europa.eu](mailto:eurostat-pressoffice@ec.europa.eu)


For further information on data:

**Michele MAROTTA**  
Tel: +352-4301-32 493  
[estat-etfree@ec.europa.eu](mailto:estat-etfree@ec.europa.eu)

 [EurostatStatistics](https://www.facebook.com/EurostatStatistics)

 [ec.europa.eu/eurostat/](http://ec.europa.eu/eurostat/)

 [@EU\\_Eurostat](https://twitter.com/EU_Eurostat)

 **Media requests:** Eurostat media support / Tel: +352-4301-33 408 / [eurostat-mediasupport@ec.europa.eu](mailto:eurostat-mediasupport@ec.europa.eu)

## Annex - Seasonally adjusted data

In July 2017 compared with June 2017, **euro area** seasonally adjusted exports decreased by 1.1%, while imports increased by 0.7%. The seasonally adjusted balance was +€18.6 bn, a fall compared with June (+€21.7 bn).

### EA19 trade - seasonally adjusted data

bn €

Flows	Aug 16	Sep16	Oct 16	Nov16	Dec16	Jan17	Feb 17	Mar 17	Apr 17	May 17	Jun 17	Jul 17
Extra-EA19 exports	171.9	170.5	170.6	176.0	179.3	177.5	179.0	182.9	179.8	183.9	180.3	178.2
Extra-EA19 imports	148.7	147.8	150.9	154.2	156.3	162.5	161.0	161.6	161.2	165.3	158.6	159.7
Extra-EA19 trade balance	23.2	22.7	19.7	21.8	23.0	15.0	18.0	21.3	18.6	18.6	21.7	18.6
Intra-EA19 trade	143.7	142.8	144.2	147.8	148.1	148.9	150.1	152.3	150.3	154.1	151.6	150.4

The source dataset is available [here](#).

In July 2017 compared with June 2017, **EU28** seasonally adjusted exports rose by 1.4% and imports by 0.8%. The seasonally adjusted balance was +€4.4 bn, an increase compared with June (+€3.4 bn).

### EU28 trade - seasonally adjusted data

bn €

Flows	Aug 16	Sep16	Oct 16	Nov16	Dec16	Jan17	Feb 17	Mar 17	Apr 17	May 17	Jun 17	Jul 17
Extra-EU28 exports	143.8	143.5	146.0	150.7	159.9	156.2	154.2	158.0	154.1	158.1	152.7	154.9
Extra-EU28 imports	146.4	145.2	142.4	146.8	149.1	154.4	153.3	155.0	153.8	157.4	149.4	150.5
Extra-EU28 trade balance	-2.6	-1.7	3.7	3.9	10.9	1.8	0.9	3.0	0.3	0.7	3.4	4.4
Intra-EU28 trade	260.8	259.2	259.5	267.0	269.1	269.0	272.4	276.0	273.2	278.7	275.7	272.0

The source dataset is available [here](#).

### Contribution of EU28 Member States to extra-EU28 trade - seasonally adjusted data

bn €

	Total exports			Total imports			Trade balance	
	Jun 17	Jul 17	Growth	Jun 17	Jul 17	Growth	Jun 17	Jul 17
<b>EU28</b>	<b>152.7</b>	<b>154.9</b>	<b>1.4%</b>	<b>149.4</b>	<b>150.5</b>	<b>0.8%</b>	<b>3.4</b>	<b>4.4</b>
Belgium	9.1	8.8	-3.2%	10.5	10.4	-1.1%	-1.4	-1.6
Bulgaria	0.8	0.7	-2.3%	0.9	0.9	-3.5%	-0.1	-0.1
Czech Republic	2.2	2.0	-6.6%	2.5	2.6	4.7%	-0.4	-0.6
Denmark	2.9	2.9	0.6%	2.1	2.1	2.2%	0.8	0.8
Germany	43.3	43.9	1.6%	28.8	29.0	0.7%	14.5	14.9
Estonia	0.3	0.3	-1.4%	0.2	0.2	8.3%	0.1	0.0
Ireland	5.0	4.2	-15.6%	2.3	1.6	-30.2%	2.7	2.6
Greece	1.0	1.1	11.2%	1.6	1.8	11.5%	-0.7	-0.8
Spain	7.5	7.8	4.1%	9.8	10.3	5.5%	-2.3	-2.5
France	15.6	15.5	-0.9%	13.6	14.2	4.2%	2.0	1.3
Croatia	0.4	0.4	-8.4%	0.4	0.4	1.8%	0.0	0.0
Italy	16.5	16.2	-1.9%	13.3	13.1	-1.4%	3.2	3.1
Cyprus	0.2	0.2	4.2%	0.2	0.2	4.8%	0.0	0.0
Latvia	0.3	0.3	-5.3%	0.3	0.3	-7.7%	0.0	0.0
Lithuania	0.9	0.8	-5.9%	0.7	0.7	-1.1%	0.2	0.2
Luxembourg	0.2	0.2	1.9%	0.3	0.3	-17.4%	-0.1	-0.1
Hungary	1.6	1.5	-5.3%	1.9	1.9	-2.8%	-0.3	-0.3
Malta	0.1	0.1	-14.1%	0.1	0.1	5.4%	-0.1	-0.1
Netherlands	12.2	11.4	-7.0%	21.6	21.9	1.4%	-9.4	-10.5
Austria	3.6	3.5	-2.7%	2.7	2.9	9.8%	0.9	0.5
Poland	3.5	3.5	-1.6%	5.0	4.8	-4.7%	-1.5	-1.3
Portugal	1.1	1.1	4.6%	1.2	1.3	11.1%	-0.1	-0.2
Romania	1.1	1.2	9.4%	1.6	1.5	-5.9%	-0.5	-0.3
Slovenia	0.7	0.7	0.2%	0.8	0.9	12.7%	-0.1	-0.2
Slovakia	0.9	0.9	6.1%	1.2	1.2	1.6%	-0.3	-0.3
Finland	1.9	2.0	2.1%	1.3	1.4	9.2%	0.6	0.5
Sweden	4.6	4.7	2.1%	3.2	3.4	7.1%	1.5	1.3
United Kingdom	15.4	19.0	23.4%	21.3	21.1	-1.0%	-5.9	-2.1

The source dataset is available [here](#).

International trade in goods balance, seasonally adjusted, € bn

