

94/2017 - 15 June 2017

April 2017

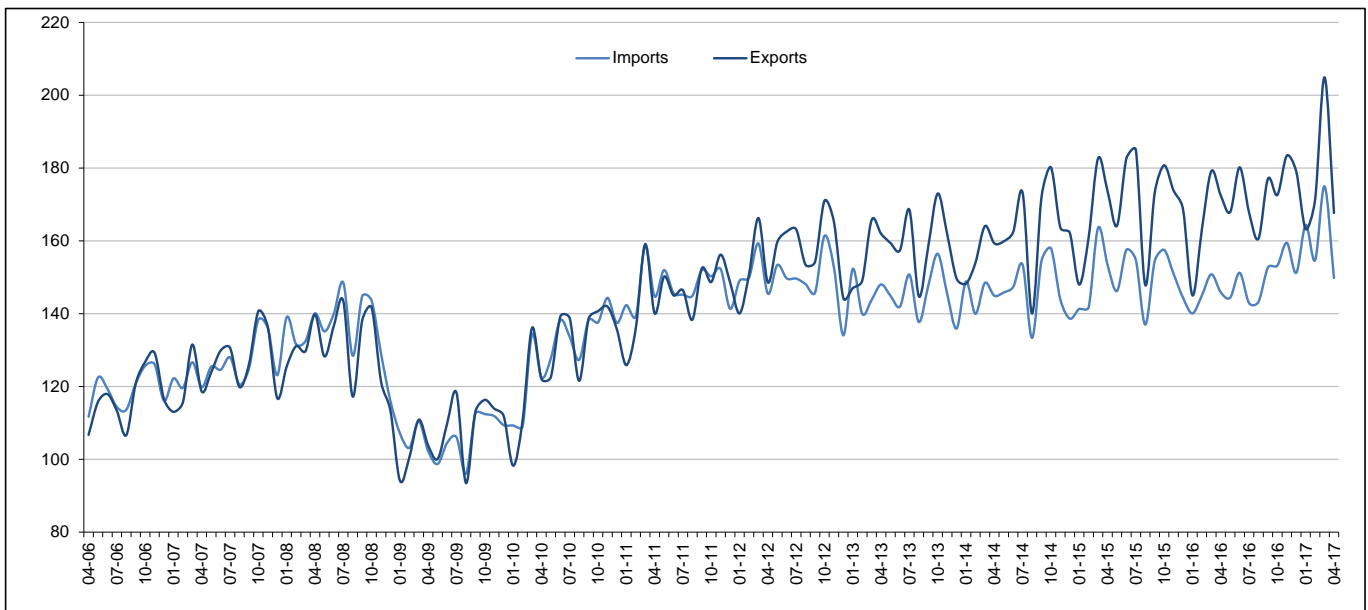
Euro area international trade in goods surplus**€17.9 bn**

€0.1 bn deficit for EU28

Euro area

The first estimate for **euro area** (EA19) exports of goods to the rest of the world in April 2017 was €167.7 billion, a decrease of 3% compared with April 2016 (€172.5 bn). Imports from the rest of the world stood at €149.8 bn, a rise of 3% compared with April 2016 (€145.9 bn). As a result, the **euro area** recorded a €17.9 bn surplus in trade in goods with the rest of the world in April 2017, compared with +€26.6 bn in April 2016. **Intra-euro area** trade stood at €144.7 bn in April 2017, nearly stable compared with April 2016.

These data are released by **Eurostat, the statistical office of the European Union**.

International trade in goods of the euro area, € bn

In January to April 2017, **euro area** exports of goods to the rest of the world stood at €707.2 bn (an increase of 7% compared with January-April 2016) and imports at €643.9 bn (an increase of 11% compared with January-April 2016). As a result, the **euro area** recorded a surplus of €63.2 bn, compared with +€78.1 bn in January-April 2016. **Intra-euro area** trade rose to €609.3 bn in January-April 2017, up by 7% compared with January-April 2016.

EA19 trade - non seasonally adjusted data**bn €**

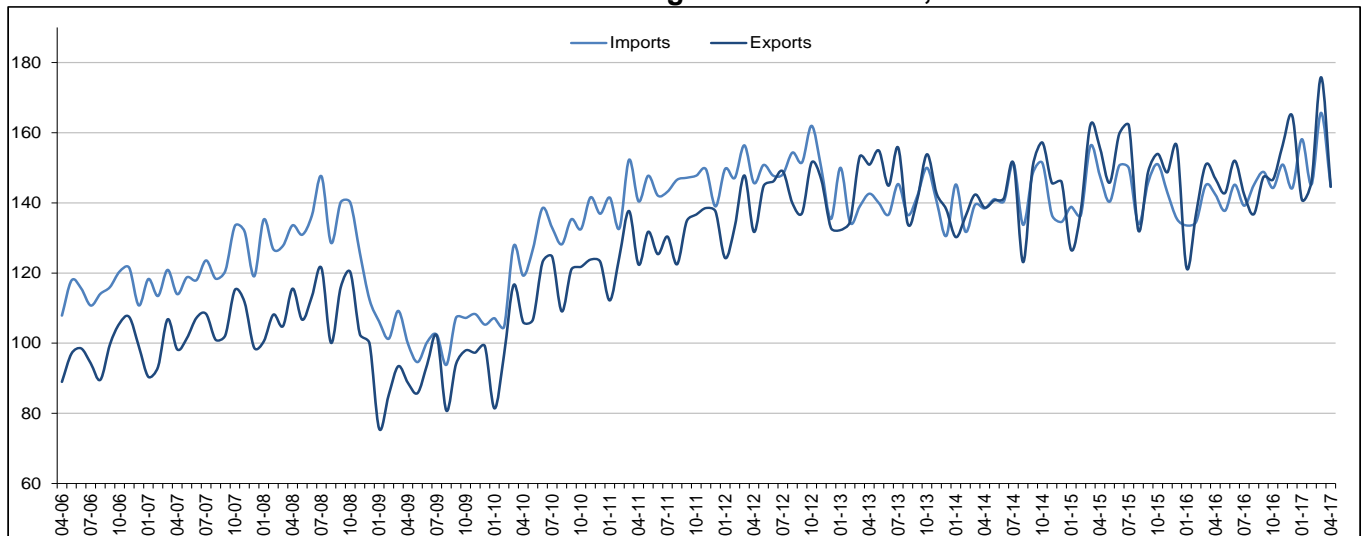
Flows	Apr 16	Apr 17	Growth	Jan-Apr 16	Jan-Apr 17	Growth
Extra-EA19 exports	172.5	167.7	-3%	659.9	707.2	7%
Extra-EA19 imports	145.9	149.8	3%	581.8	643.9	11%
Extra-EA19 trade balance	26.6	17.9		78.1	63.2	
Intra-EA19 trade	144.3	144.7	0%	568.4	609.3	7%

The source dataset is available [here](#).

European Union

The first estimate for **extra-EU28** exports of goods in April 2017 was €144.6 billion, down by 2% compared with April 2016 (€146.9 bn). Imports from the rest of the world stood at €144.6 bn, up by 2% compared with April 2016 (€142.3 bn). As a result, the **EU28** recorded a €0.1 bn deficit in trade in goods with the rest of the world in April 2017, compared with a surplus of €4.5 bn in April 2016. **Intra-EU28 trade** fell to €259.2 bn in April 2017, -1% compared with April 2016.

International trade in goods of the EU28, € bn



In January to April 2017, **extra-EU28** exports of goods stood at €607.4 bn (an increase of 9% compared with January-April 2016) and imports at €613.7 bn (an increase of 10% compared with January-April 2016). As a result, the **EU28** recorded a deficit of €6.3 bn, compared with a surplus of €0.8 bn in January-April 2016. **Intra-EU28 trade** rose to €1 097.6 bn in January-April 2017, +6% compared with January-April 2016.

EU28 trade - non seasonally adjusted data

bn €

Flows	Apr 16	Apr 17	Growth	Jan-Apr 16	Jan-Apr 17	Growth
Extra-EU28 exports	146.9	144.6	-2%	556.3	607.4	9%
Extra-EU28 imports	142.3	144.6	2%	555.5	613.7	10%
Extra-EU28 trade balance	4.5	-0.1		0.8	-6.3	
Intra-EU28 trade	262.9	259.2	-1%	1 033.7	1 097.6	6%

The source dataset is available [here](#).

Main products - EU28

bn €

	Extra-EU28 exports			Extra-EU28 imports			Trade balance	
	Jan-Apr 16	Jan-Apr 17	Growth	Jan-Apr 16	Jan-Apr 17	Growth	Jan-Apr 16	Jan-Apr 17
Total	556.3	607.4	9%	555.5	613.7	10%	0.8	-6.3
Primary goods:	71.5	88.5	24%	134.8	181.4	35%	-63.3	-93.0
<i>Food & drink</i>	36.9	38.7	5%	36.2	37.8	4%	0.6	1.0
<i>Raw materials</i>	14.0	17.0	22%	22.7	26.6	17%	-8.7	-9.6
<i>Energy</i>	20.6	32.7	58%	75.8	117.1	54%	-55.2	-84.4
Manufactured goods:	466.3	498.7	7%	395.8	412.7	4%	70.5	86.0
<i>Chemicals</i>	101.6	111.8	10%	64.1	66.8	4%	37.4	45.0
<i>Machinery & vehicles</i>	235.8	250.9	6%	182.6	191.0	5%	53.3	59.8
<i>Other manuf'd goods</i>	128.9	136.0	5%	149.1	154.8	4%	-20.1	-18.8
Other	18.5	20.2	10%	25.0	19.6	-22%	-6.5	0.6

The source dataset is available [here](#).

Main trading partners - EU28

bn €

	EU28 exports to			EU28 imports from			Trade balance	
	Jan-Apr 16	Jan-Apr 17	Growth	Jan-Apr 16	Jan-Apr 17	Growth	Jan-Apr 16	Jan-Apr 17
United States	118.3	126.0	6%	85.2	86.5	2%	33.1	39.5
China	53.4	62.5	17%	110.8	115.4	4%	-57.4	-52.9
Switzerland	46.6	50.6	9%	38.6	36.3	-6%	8.0	14.3
Russia	21.6	26.6	23%	36.5	51.3	41%	-14.9	-24.7
Turkey	25.8	26.4	2%	22.3	23.1	4%	3.5	3.2
Norway	15.3	16.5	7%	19.8	27.1	37%	-4.4	-10.6
Japan	17.7	19.7	11%	22.5	23.2	3%	-4.7	-3.5
South Korea	14.1	15.7	11%	14.3	17.1	20%	-0.1	-1.4
India	12.3	13.2	7%	13.9	15.3	10%	-1.5	-2.1
Canada	11.1	12.4	12%	9.9	10.7	7%	1.2	1.7

The source dataset is available [here](#).

Member States' total trade (intra-EU + extra-EU)

bn €

	Total exports						Total imports						Trade balance					
	Total		Intra-EU		Extra-EU		Total		Intra-EU		Extra-EU		Total		Intra-EU		Extra-EU	
	Jan-Apr 17	Growth / Jan-Apr 16	Jan-Apr 17	Growth / Jan-Apr 16	Jan-Apr 17	Growth / Jan-Apr 16	Jan-Apr 17	Growth / Jan-Apr 16	Jan-Apr 17	Growth / Jan-Apr 16	Jan-Apr 17	Growth / Jan-Apr 16	Jan-Apr 17	Jan-Apr 16	Jan-Apr 17	Jan-Apr 16	Jan-Apr 17	Jan-Apr 16
Belgium	126.1	5%	91.9	6%	34.2	4%	118.8	6%	77.3	10%	41.6	-1%	7.3	7.2	14.7	16.5	-7.4	-9.3
Bulgaria	8.2	13%	5.3	9%	2.8	22%	9.5	20%	6.0	11%	3.5	38%	-1.3	-0.7	-0.7	-0.5	-0.6	-0.2
Czech Republic	51.9	4%	43.5	4%	8.4	9%	45.9	8%	35.9	7%	10.0	13%	6.0	7.2	7.6	8.4	-1.6	-1.2
Denmark	29.7	6%	18.1	5%	11.6	9%	26.7	7%	18.9	5%	7.8	13%	3.0	3.0	-0.8	-0.8	3.8	3.8
Germany	421.1	5%	248.8	5%	172.3	7%	341.8	9%	224.7	8%	117.1	11%	79.3	85.3	24.2	29.0	55.1	56.3
Estonia	4.1	9%	3.0	5%	1.1	20%	5.0	12%	4.0	11%	1.0	19%	-0.8	-0.6	-1.0	-0.7	0.2	0.1
Ireland	40.1	9%	19.8	3%	20.3	15%	23.0	2%	15.9	8%	7.1	-11%	17.2	14.3	3.9	4.6	13.3	9.7
Greece	9.2	18%	5.0	8%	4.2	32%	17.6	22%	8.2	6%	9.4	41%	-8.4	-6.6	-3.2	-3.1	-5.1	-3.4
Spain	93.5	10%	62.8	9%	30.7	11%	102.1	12%	60.1	7%	42.0	21%	-8.6	-5.8	2.7	1.3	-11.3	-7.1
France	154.3	3%	93.2	2%	61.1	4%	184.7	7%	128.2	7%	56.5	8%	-30.4	-22.5	-35.0	-28.5	4.6	6.0
Croatia	4.4	17%	2.8	12%	1.6	27%	6.9	11%	5.4	8%	1.5	24%	-2.6	-2.5	-2.6	-2.5	0.1	0.0
Italy	142.9	7%	80.8	5%	62.0	8%	132.6	10%	78.2	7%	54.5	14%	10.2	13.6	2.7	3.9	7.5	9.8
Cyprus	0.7	-28%	0.3	-55%	0.4	21%	2.4	34%	1.4	25%	0.9	51%	-1.6	-0.7	-1.1	-0.5	-0.5	-0.3
Latvia	3.7	10%	2.6	8%	1.1	13%	4.4	11%	3.5	9%	1.0	21%	-0.7	-0.6	-0.9	-0.8	0.2	0.2
Lithuania	8.1	15%	4.8	10%	3.3	25%	9.1	17%	6.3	14%	2.8	27%	-1.0	-0.7	-1.5	-1.1	0.5	0.4
Luxembourg	4.7	-4%	3.9	-4%	0.8	-3%	6.6	2%	5.4	8%	1.2	-18%	-1.9	-1.6	-1.5	-0.9	-0.4	-0.6
Hungary	32.7	9%	26.5	7%	6.2	17%	30.2	11%	22.7	7%	7.5	23%	2.5	2.7	3.8	3.5	-1.3	-0.8
Malta	0.7	-17%	0.4	5%	0.3	-34%	1.6	-21%	1.0	16%	0.6	-48%	-0.9	-1.2	-0.6	-0.5	-0.3	-0.7
Netherlands	185.8	13%	139.9	12%	46.0	18%	163.8	13%	75.0	8%	88.8	17%	22.0	18.6	64.8	55.7	-42.8	-37.1
Austria	48.8	7%	34.9	8%	13.9	6%	50.5	7%	38.3	5%	12.2	15%	-1.6	-1.7	-3.4	-4.3	1.8	2.6
Poland	64.9	7%	51.4	6%	13.4	15%	64.1	10%	45.1	7%	19.0	19%	0.7	2.2	6.3	6.6	-5.5	-4.3
Portugal	18.2	13%	13.5	8%	4.6	28%	22.0	14%	16.7	10%	5.3	30%	-3.8	-3.2	-3.1	-2.7	-0.7	-0.5
Romania	20.2	9%	15.4	9%	4.9	9%	23.6	10%	17.9	7%	5.7	22%	-3.4	-2.8	-2.6	-2.6	-0.8	-0.2
Slovenia	10.8	11%	8.2	10%	2.6	14%	10.1	13%	7.1	13%	3.0	14%	0.7	0.8	1.1	1.2	-0.4	-0.4
Slovakia	24.4	8%	20.8	7%	3.5	13%	23.8	9%	18.9	7%	5.0	18%	0.5	0.8	1.9	1.9	-1.4	-1.1
Finland	19.1	15%	11.3	14%	7.8	17%	19.8	12%	13.6	4%	6.2	36%	-0.8	-1.1	-2.3	-3.2	1.6	2.1
Sweden	44.4	7%	26.4	7%	18.0	8%	44.7	9%	31.8	8%	13.0	13%	-0.3	0.5	-5.3	-4.7	5.0	5.3
United Kingdom	132.2	8%	62.2	5%	70.1	10%	187.4	-1%	97.7	1%	89.7	-2%	-55.2	-66.1	-35.6	-37.8	-19.6	-28.3

The source dataset is available [here](#).

Geographical information

The **euro area** (EA19) includes Belgium, Germany, Estonia, Ireland, Greece, Spain, France, Italy, Cyprus, Latvia, Lithuania, Luxembourg, Malta, the Netherlands, Austria, Portugal, Slovenia, Slovakia and Finland.

The **European Union** (EU28) includes Belgium, Bulgaria, the Czech Republic, Denmark, Germany, Estonia, Ireland, Greece, Spain, France, Croatia, Italy, Cyprus, Latvia, Lithuania, Luxembourg, Hungary, Malta, the Netherlands, Austria, Poland, Portugal, Romania, Slovenia, Slovakia, Finland, Sweden and the United Kingdom.

Methods and definitions

Since the introduction of Intrastat for intra-EU trade on 1 January 1993, the value of dispatches has been consistently higher than that of arrivals. In theory, as dispatches are declared FOB and arrivals CIF, the value of arrivals should be slightly higher than that of dispatches. Eurostat uses dispatches as the more reliable measure of total intra-EU trade as, at aggregated levels, total dispatches has better coverage than total arrivals. Due to this divergence in intra-EU trade, and to the difficulties of interpreting figures in absolute terms at the level of individual Member States, trade balances for individual Member States must be interpreted with caution. The same caution applies to the trade balance of the euro area, which includes some intra-EU trade.

National concepts may differ from the harmonised methodology used by Eurostat, leading to differences between figures in this release and those published nationally, both for raw data and for seasonally adjusted series.

Products are classified according to the Standard international trade classification (SITC), Revision 4.

Revisions and timetable

This News Release is based on data available on 9 June 2017. These are provisional figures based on information provided by Member States. They are subject to frequent revision for up to two years after the month in question.

For more information

Eurostat website section on international trade in goods

Eurostat database section on international trade in goods

Eurostat Statistics Explained article on international trade in goods statistics

Eurostat €-indicators release calendar


Issued by: **Eurostat Press Office**

Vincent BOURGSAIS
Tel: +352-4301-33 444
eurostat-pressoffice@ec.europa.eu


For further information on data:

Michele MAROTTA
Tel: +352-4301-32 493
estat-etfree@ec.europa.eu

 [EurostatStatistics](https://www.facebook.com/EurostatStatistics)

 ec.europa.eu/eurostat/

 [@EU_Eurostat](https://twitter.com/EU_Eurostat)

 **Media requests:** Eurostat media support / Tel: +352-4301-33 408 / eurostat-mediasupport@ec.europa.eu

Annex - Seasonally adjusted data

In April 2017 compared with March 2017, **euro area** seasonally adjusted exports decreased by 2.1% and imports by 0.8%. The seasonally adjusted balance was +€19.6 bn, a fall compared with March (+€22.2 bn).

EA19 trade - seasonally adjusted data

bn €

Flows	May 16	Jun 16	Jul 16	Aug 16	Sep16	Oct 16	Nov16	Dec16	Jan17	Feb 17	Mar 17	Apr 17
Extra-EA19 exports	168.1	167.7	166.9	172.0	170.2	170.4	175.9	179.1	177.3	178.7	182.7	178.9
Extra-EA19 imports	143.2	145.7	147.3	148.6	147.6	150.7	154.2	156.1	162.1	160.3	160.5	159.3
Extra-EA19 trade balance	24.8	22.0	19.6	23.3	22.7	19.6	21.7	23.1	15.3	18.4	22.2	19.6
Intra-EA19 trade	139.6	141.7	141.1	143.4	142.4	143.8	147.2	147.6	148.5	149.6	151.8	150.9

The source dataset is available [here](#).

In April 2017 compared with March 2017, **EU28** seasonally adjusted exports fell by 2.2% and imports by 0.5%. The seasonally adjusted balance was +€0.7 bn, a fall compared with March (+€3.3 bn).

EU28 trade - seasonally adjusted data

bn €

Flows	May 16	Jun 16	Jul 16	Aug 16	Sep16	Oct 16	Nov16	Dec16	Jan17	Feb 17	Mar 17	Apr 17
Extra-EU28 exports	141.9	141.6	140.4	144.0	143.4	145.8	150.7	159.6	155.5	154.1	157.7	154.3
Extra-EU28 imports	137.2	140.6	142.0	146.0	144.8	141.9	146.6	149.2	154.4	153.1	154.4	153.6
Extra-EU28 trade balance	4.7	1.0	-1.5	-2.0	-1.4	3.9	4.1	10.3	1.1	1.0	3.3	0.7
Intra-EU28 trade	253.8	257.9	256.2	260.4	258.7	259.0	266.2	268.4	268.2	271.3	274.8	272.2

The source dataset is available [here](#).

Contribution of EU28 Member States to extra-EU28 trade - seasonally adjusted data

bn €

	Total exports			Total imports			Trade balance	
	Mar 17	Apr 17	Growth	Mar 17	Apr 17	Growth	Mar 17	Apr 17
EU28	157.7	154.3	-2.2%	154.4	153.6	-0.5%	3.3	0.7
Belgium	8.7	8.4	-3.4%	10.3	10.4	1.0%	-1.6	-2.0
Bulgaria	0.7	0.7	2.8%	1.0	0.9	-13.0%	-0.3	-0.2
Czech Republic	2.2	2.1	-3.7%	2.6	2.5	-0.8%	-0.4	-0.4
Denmark	3.1	2.7	-14.1%	2.0	2.1	4.5%	1.2	0.6
Germany	44.3	43.3	-2.1%	29.4	29.6	0.9%	14.9	13.7
Estonia	0.3	0.3	-3.7%	0.2	0.2	1.9%	0.1	0.1
Ireland	5.3	5.0	-6.5%	1.6	1.7	3.9%	3.7	3.3
Greece	1.1	1.1	2.7%	2.0	2.3	13.6%	-0.9	-1.1
Spain	8.0	8.0	0.9%	10.4	10.3	-1.5%	-2.5	-2.2
France	16.2	16.1	-0.6%	14.0	13.7	-2.2%	2.2	2.4
Croatia	0.5	0.4	-18.1%	0.4	0.4	-4.2%	0.0	0.0
Italy	16.7	15.9	-5.1%	13.5	13.3	-1.5%	3.3	2.6
Cyprus	0.1	0.1	-13.2%	0.2	0.2	-8.1%	-0.1	-0.1
Latvia	0.3	0.3	4.7%	0.2	0.2	-8.5%	0.1	0.1
Lithuania	0.9	0.9	-3.2%	0.7	0.7	3.6%	0.3	0.2
Luxembourg	0.2	0.2	-9.9%	0.3	0.3	-2.9%	-0.1	-0.1
Hungary	1.6	1.6	-4.5%	2.0	1.7	-15.3%	-0.4	-0.2
Malta	0.1	0.1	8.6%	0.1	0.2	63.5%	0.0	-0.1
Netherlands	12.2	11.6	-5.1%	22.6	22.3	-1.6%	-10.4	-10.7
Austria	3.6	3.6	-0.3%	2.8	2.8	1.3%	0.9	0.8
Poland	3.7	3.5	-5.4%	5.0	4.7	-5.9%	-1.3	-1.2
Portugal	1.3	1.2	-4.3%	1.3	1.5	16.4%	0.0	-0.3
Romania	1.2	1.3	1.2%	1.5	1.5	6.6%	-0.2	-0.3
Slovenia	0.7	0.7	-1.3%	0.8	0.8	1.7%	-0.1	-0.1
Slovakia	1.0	0.9	-1.1%	1.4	1.2	-10.5%	-0.4	-0.3
Finland	2.0	2.0	-2.5%	1.4	1.5	8.1%	0.6	0.4
Sweden	4.8	4.3	-9.0%	3.3	3.3	1.6%	1.5	1.0
United Kingdom	16.9	18.0	6.2%	23.6	23.4	-1.0%	-6.7	-5.4

The source dataset is available [here](#).

International trade in goods balance, seasonally adjusted, € bn

