

64/2017 – 19 April 2017

February 2017

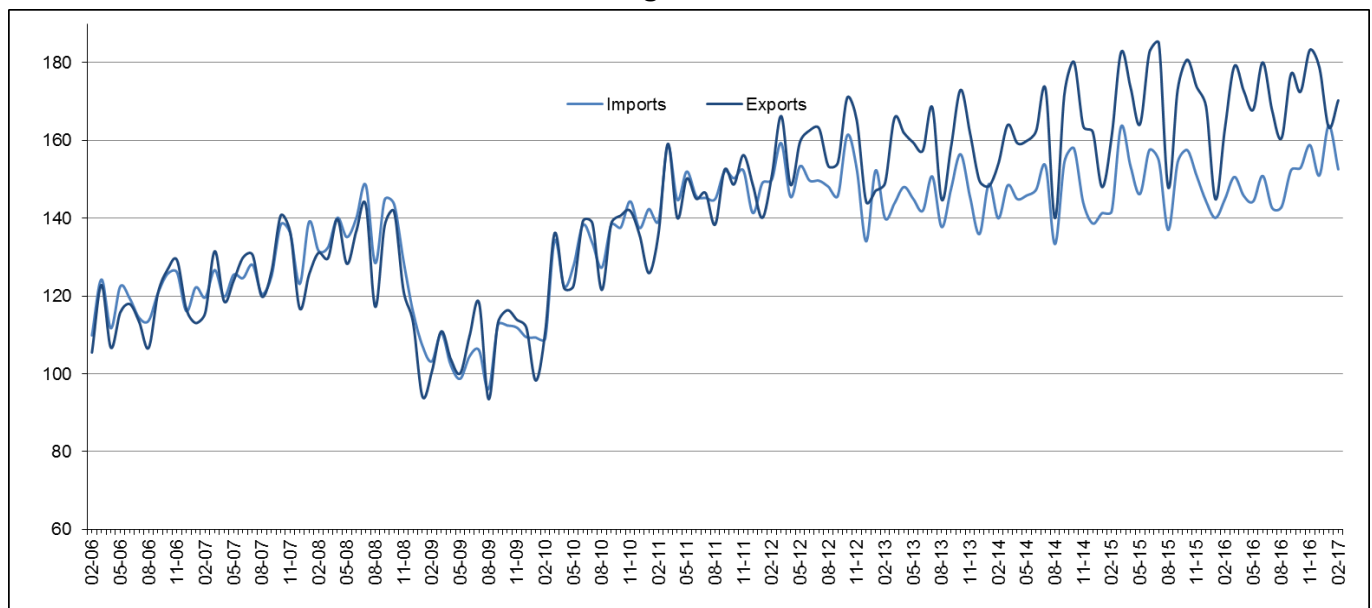
Euro area international trade in goods surplus €17.8 bn

€1.7 bn surplus for EU28

Euro area

The first estimate for **euro area** (EA19) exports of goods to the rest of the world in February 2017 was €170.3 billion, an increase of 4% compared with February 2016 (€163.2 bn). Imports from the rest of the world stood at €152.6 bn, a rise of 5% compared with February 2016 (€144.9 bn). As a result, the **euro area** recorded a €17.8 bn surplus in trade in goods with the rest of the world in February 2017, compared with +€18.2 bn in February 2016. **Intra-euro area** trade rose to €149.1 bn in February 2017, up by 5% compared with February 2016.

These data are released by **Eurostat, the statistical office of the European Union**.

International trade in goods of the euro area, € bn

In January to February 2017, **euro area** exports of goods to the rest of the world rose to €333.7 bn (an increase of 8% compared with January-February 2016), while imports rose to €316.4 bn (an increase of 11% compared with January-February 2016). As a result the **euro area** recorded a surplus of €17.3 bn, compared with +€23.0 bn in January-February 2016. **Intra-euro area** trade rose to €294.9 bn in January-February 2017, up by 8% compared with January-February 2016.

EA19 trade - non seasonally adjusted data**bn €**

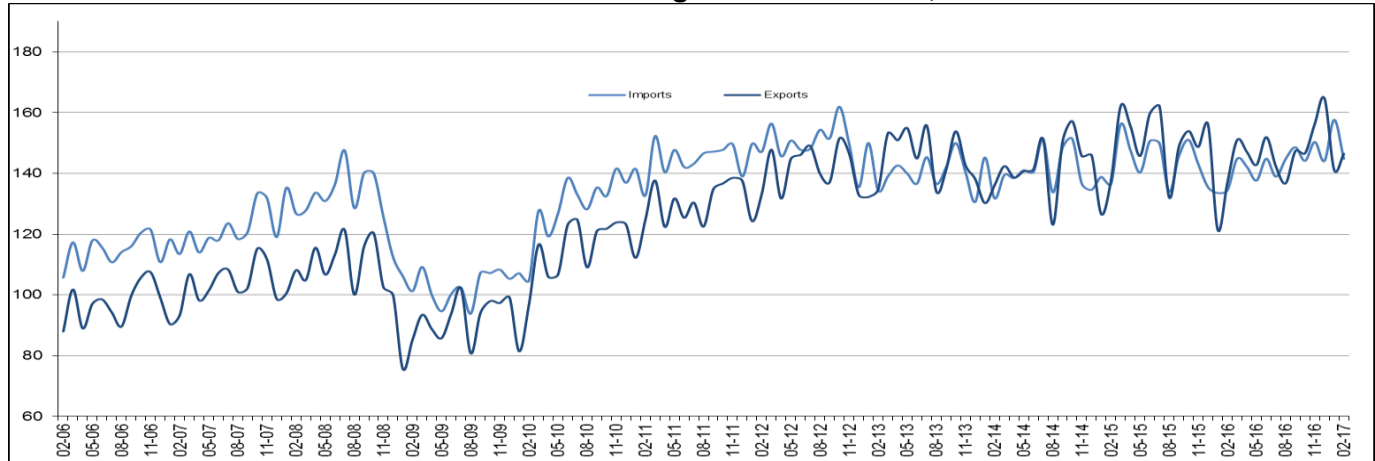
Flows	Feb 16	Feb 17	Growth	Jan-Feb 16	Jan-Feb 17	Growth
Extra-EA19 exports	163.2	170.3	4%	308.1	333.7	8%
Extra-EA19 imports	144.9	152.6	5%	285.0	316.4	11%
Extra-EA19 trade balance	18.2	17.8		23.0	17.3	
Intra-EA19 trade	141.7	149.1	5%	273.8	294.9	8%

The source dataset is available [here](#).

European Union

The first estimate for **extra-EU28** exports of goods in February 2017 was €146.5 billion, up by 7% compared with February 2016 (€137.0 bn). Imports from the rest of the world stood at €144.8 bn, up by 8% compared with February 2016 (€134.5 bn). As a result, the **EU28** recorded a €1.7 bn surplus in trade in goods with the rest of the world in February 2017, compared with +€2.6 bn in February 2016. **Intra-EU28** trade rose to €265.9 bn in February 2017, +3% compared with February 2016.

International trade in goods of the EU28, € bn



In January to February 2017, **extra-EU28** exports of goods rose to €287.6 bn (an increase of 11% compared with January-February 2016), while imports rose to €302.4 bn (an increase of 13% compared with January-February 2016). As a result, the **EU28** recorded a deficit of €14.8 bn, compared with -€9.6 bn in January-February 2016. **Intra-EU28** trade rose to €528.2 bn in January-February 2017, +6% compared with January-February 2016.

EU28 trade - non seasonally adjusted data

bn €

Flows	Feb 16	Feb 17	Growth	Jan-Feb 16	Jan-Feb 17	Growth
Extra-EU28 exports	137.0	146.5	7%	258.4	287.6	11%
Extra-EU28 imports	134.5	144.8	8%	268.0	302.4	13%
Extra-EU28 trade balance	2.6	1.7		-9.6	-14.8	
Intra-EU28 trade	257.9	265.9	3%	497.4	528.2	6%

The source dataset is available [here](#).

Main products - EU28

bn €

	Extra-EU28 exports			Extra-EU28 imports			Trade balance	
	Jan-Feb 16	Jan-Feb 17	Growth	Jan-Feb 16	Jan-Feb 17	Growth	Jan-Feb 16	Jan-Feb 17
Total	258.4	287.6	11%	268.0	302.4	13%	-9.6	-14.8
Primary goods:	33.7	42.9	27%	65.5	91.2	39%	-31.8	-48.3
<i>Food & drink</i>	17.3	18.3	5%	17.7	18.2	3%	-0.3	0.1
<i>Raw materials</i>	6.4	8.1	26%	10.9	12.7	16%	-4.5	-4.6
<i>Energy</i>	9.9	16.5	67%	36.9	60.4	64%	-27.0	-43.8
Manufactured goods:	214.4	233.4	9%	194.7	202.4	4%	19.7	31.0
<i>Chemicals</i>	47.3	53.5	13%	32.6	32.6	0%	14.8	20.9
<i>Machinery & vehicles</i>	105.9	115.8	9%	86.0	92.2	7%	19.9	23.6
<i>Other manuf'd goods</i>	61.1	64.1	5%	76.1	77.6	2%	-15.0	-13.5
Other	10.4	11.2	8%	7.9	8.8	12%	2.5	2.4

The source dataset is available [here](#).

Main trading partners - EU28

bn €

	EU28 exports to			EU28 imports from			Trade balance	
	Jan-Feb 16	Jan-Feb 17	Growth	Jan-Feb 16	Jan-Feb 17	Growth	Jan-Feb 16	Jan-Feb 17
United States	54.1	59.7	10%	40.0	40.9	2%	14.0	18.8
China	24.5	29.2	19%	59.1	60.1	2%	-34.6	-30.9
Switzerland	23.5	25.9	10%	16.9	18.1	7%	6.6	7.8
Russia	9.4	12.3	30%	17.0	26.4	55%	-7.6	-14.1
Turkey	11.9	12.2	2%	10.5	11.2	6%	1.4	1.0
Norway	7.3	7.8	7%	9.8	14.1	44%	-2.5	-6.3
Japan	8.5	9.6	13%	10.3	11.0	7%	-1.7	-1.4
South Korea	6.6	7.6	15%	6.4	8.3	31%	0.2	-0.8
India	5.8	6.3	9%	6.7	7.3	9%	-1.0	-1.0
Canada	5.2	5.7	9%	4.5	5.2	16%	0.7	0.4

The source dataset is available [here](#).

Member States' total trade (intra-EU + extra-EU)

bn €

	Total exports						Total imports						Trade balance					
	Total		Intra-EU		Extra-EU		Total		Intra-EU		Extra-EU		Total		Intra-EU		Extra-EU	
	Jan-Feb 17	Growth / Jan-Feb 16	Jan-Feb 17	Growth / Jan-Feb 16	Jan-Feb 17	Growth / Jan-Feb 16	Jan-Feb 17	Growth / Jan-Feb 16	Jan-Feb 17	Growth / Jan-Feb 16	Jan-Feb 17	Growth / Jan-Feb 16	Jan-Feb 17	Jan-Feb 16	Jan-Feb 17	Jan-Feb 16	Jan-Feb 17	Jan-Feb 16
Belgium	60.9	5%	44.5	5%	16.4	5%	58.4	6%	38.0	12%	20.4	-3%	2.6	3.2	6.5	8.6	-4.0	-5.4
Bulgaria	4.0	13%	2.5	9%	1.4	20%	4.4	18%	2.8	12%	1.6	31%	-0.5	-0.2	-0.3	-0.2	-0.2	-0.1
Czech Republic	25.0	4%	21.0	3%	4.0	9%	21.9	6%	16.9	4%	4.9	14%	3.1	3.4	4.1	4.1	-1.0	-0.7
Denmark	14.1	6%	8.5	4%	5.6	11%	12.8	4%	9.0	3%	3.8	6%	1.2	0.9	-0.6	-0.6	1.8	1.5
Germany	201.4	7%	119.9	5%	81.5	10%	166.0	8%	108.5	7%	57.5	9%	35.4	34.0	11.4	12.4	24.0	21.6
Estonia	1.9	10%	1.4	5%	0.5	28%	2.4	19%	2.0	19%	0.5	22%	-0.5	-0.3	-0.5	-0.3	0.0	0.0
Ireland	19.0	11%	9.3	0%	9.7	25%	10.7	3%	7.3	6%	3.4	-3%	8.3	6.7	2.0	2.5	6.3	4.3
Greece	4.2	17%	2.3	4%	2.0	36%	8.5	31%	3.8	7%	4.7	60%	-4.3	-2.9	-1.6	-1.4	-2.7	-1.5
Spain	44.0	11%	29.9	10%	14.1	12%	49.5	14%	28.4	8%	21.1	23%	-5.5	-3.8	1.5	0.8	-7.0	-4.6
France	72.7	1%	44.7	1%	28.0	2%	91.1	9%	62.8	8%	28.3	10%	-18.4	-11.9	-18.1	-13.8	-0.3	1.9
Croatia	2.1	21%	1.3	16%	0.7	30%	3.1	10%	2.4	6%	0.7	28%	-1.0	-1.1	-1.1	-1.1	0.1	0.1
Italy	66.6	7%	38.1	5%	28.4	11%	65.2	12%	37.7	9%	27.6	17%	1.3	3.9	0.5	1.8	0.8	2.1
Cyprus	0.3	34%	0.1	5%	0.2	61%	0.9	36%	0.6	18%	0.3	87%	-0.6	-0.4	-0.5	-0.4	-0.1	-0.1
Latvia	1.8	11%	1.2	10%	0.5	13%	2.1	15%	1.6	13%	0.5	22%	-0.3	-0.3	-0.4	-0.3	0.0	0.1
Lithuania	3.9	16%	2.4	13%	1.5	22%	4.3	24%	2.9	18%	1.5	36%	-0.5	-0.2	-0.5	-0.3	0.0	0.2
Luxembourg	2.4	-1%	1.9	-5%	0.5	18%	3.2	4%	2.5	9%	0.7	-9%	-0.8	-0.7	-0.6	-0.3	-0.2	-0.4
Hungary	15.7	9%	12.7	7%	3.0	19%	14.5	10%	10.8	7%	3.7	22%	1.2	1.2	1.9	1.8	-0.7	-0.5
Malta	0.3	-2%	0.2	-6%	0.1	3%	0.8	-25%	0.4	8%	0.3	-46%	-0.5	-0.7	-0.3	-0.2	-0.2	-0.5
Netherlands	91.6	16%	68.9	13%	22.7	25%	80.0	13%	36.3	9%	43.7	16%	11.6	8.3	32.6	27.8	-21.0	-19.5
Austria	23.2	8%	16.7	9%	6.4	7%	24.5	6%	17.7	3%	6.8	17%	-1.3	-1.6	-0.9	-1.8	-0.4	0.2
Poland	30.5	6%	24.4	4%	6.1	16%	30.5	10%	21.2	6%	9.2	21%	0.0	1.0	3.2	3.4	-3.1	-2.4
Portugal	8.8	14%	6.6	9%	2.2	31%	10.5	15%	7.9	11%	2.6	33%	-1.7	-1.4	-1.3	-1.1	-0.4	-0.3
Romania	9.7	9%	7.4	9%	2.3	10%	11.0	11%	8.3	7%	2.7	25%	-1.3	-1.0	-0.9	-1.0	-0.3	0.0
Slovenia	5.1	10%	3.9	9%	1.2	12%	4.9	15%	3.4	15%	1.5	14%	0.2	0.4	0.5	0.6	-0.3	-0.2
Slovakia	11.6	7%	10.0	7%	1.6	10%	11.2	9%	8.9	8%	2.3	12%	0.3	0.4	1.1	1.1	-0.7	-0.6
Finland	9.0	16%	5.4	15%	3.6	18%	9.6	15%	6.3	3%	3.3	51%	-0.6	-0.6	-1.0	-1.5	0.3	0.9
Sweden	21.6	11%	13.0	11%	8.6	11%	21.5	11%	15.3	10%	6.3	15%	0.0	0.1	-2.3	-2.2	2.3	2.3
United Kingdom	64.7	8%	29.9	5%	34.8	11%	89.8	4%	47.2	0%	42.6	9%	-25.1	-26.4	-17.3	-18.6	-7.8	-7.8

The source dataset is available [here](#).

Geographical information

The **euro area** (EA19) includes Belgium, Germany, Estonia, Ireland, Greece, Spain, France, Italy, Cyprus, Latvia, Lithuania, Luxembourg, Malta, the Netherlands, Austria, Portugal, Slovenia, Slovakia and Finland.

The **European Union** (EU28) includes Belgium, Bulgaria, the Czech Republic, Denmark, Germany, Estonia, Ireland, Greece, Spain, France, Croatia, Italy, Cyprus, Latvia, Lithuania, Luxembourg, Hungary, Malta, the Netherlands, Austria, Poland, Portugal, Romania, Slovenia, Slovakia, Finland, Sweden and the United Kingdom.

Methods and definitions

Since the introduction of Intrastat for intra-EU trade on 1 January 1993, the value of dispatches has been consistently higher than that of arrivals. In theory, as dispatches are declared FOB and arrivals CIF, the value of arrivals should be slightly higher than that of dispatches. Eurostat uses dispatches as the more reliable measure of total intra-EU trade as, at aggregated levels, total dispatches has better coverage than total arrivals. Due to this divergence in intra-EU trade, and to the difficulties of interpreting figures in absolute terms at the level of individual Member States, trade balances for individual Member States must be interpreted with caution. The same caution applies to the trade balance of the euro area, which includes some intra-EU trade.

National concepts may differ from the harmonised methodology used by Eurostat, leading to differences between figures in this release and those published nationally, both for raw data and for seasonally adjusted series.

Products are classified according to the Standard international trade classification (SITC), Revision 4.

Revisions and timetable

This News Release is based on data available on 12 April 2017. These are provisional figures based on information provided by Member States. They are subject to frequent revision for up to two years after the month in question.

For more information

Eurostat website section on international trade in goods

Eurostat database section on international trade in goods

Eurostat Statistics Explained article on international trade in goods statistics

Eurostat €-indicators release calendar

Issued by: **Eurostat Press Office**

Vincent BOURGAIIS
Tel: +352-4301-33 444
eurostat-pressoffice@ec.europa.eu


For further information on data:

Michele MAROTTA
Tel: +352-4301-32 493
estat-etfree@ec.europa.eu

 [EurostatStatistics](https://www.facebook.com/EurostatStatistics)

 ec.europa.eu/eurostat/

 [@EU_Eurostat](https://twitter.com/EU_Eurostat)

 **Media requests:** Eurostat media support / Tel: +352-4301-33 408 / eurostat-mediasupport@ec.europa.eu

Annex - Seasonally adjusted data

In February 2017 compared with January 2017, euro area seasonally adjusted exports increased by 0.4%, while imports decreased by 1.7%. The seasonally adjusted balance was +€19.2 bn, an increase compared with January (+€15.7 bn).

EA19 trade - seasonally adjusted data

bn €

Flows	Mar 16	Apr 16	May 16	Jun 16	Jul 16	Aug 16	Sep16	Oct16	Nov16	Dec16	Jan17	Feb17
Extra-EA19 exports	168.1	169.4	168.1	167.6	166.7	171.9	170.2	170.2	175.6	178.8	177.2	177.9
Extra-EA19 imports	143.9	144.5	143.1	145.3	147.0	148.3	147.2	150.4	153.5	155.8	161.5	158.7
Extra-EA19 trade balance	24.2	24.9	25.0	22.3	19.7	23.6	23.0	19.7	22.1	23.0	15.7	19.2
Intra-EA19 trade	139.2	141.3	139.5	141.8	141.1	143.5	142.5	143.6	147.0	147.3	148.0	150.2

The source dataset is available [here](#).

In February 2017 compared with January 2017, EU28 seasonally adjusted exports and imports both fell by 0.8%. The seasonally adjusted balance remained stable at +€1.7 bn.

EU28 trade - seasonally adjusted data

bn €

Flows	Mar 16	Apr 16	May 16	Jun 16	Jul 16	Aug 16	Sep16	Oct16	Nov16	Dec16	Jan17	Feb17
Extra-EU28 exports	143.1	143.2	141.8	141.5	140.3	144.0	143.4	145.8	150.5	159.4	155.6	154.4
Extra-EU28 imports	140.4	141.3	137.1	140.2	141.6	145.7	144.5	141.8	146.1	149.1	153.9	152.7
Extra-EU28 trade balance	2.6	2.0	4.8	1.3	-1.3	-1.8	-1.1	4.0	4.4	10.3	1.7	1.7
Intra-EU28 trade	253.9	258.3	253.7	257.9	256.1	260.4	258.7	258.6	265.9	267.8	267.3	270.2

The source dataset is available [here](#).

Contribution of EU28 Member States to extra-EU28 trade - seasonally adjusted data

bn €

	Total exports			Total imports			Trade balance	
	Jan17	Feb17	Growth	Jan17	Feb17	Growth	Jan17	Feb17
EU28	155.6	154.4	-0.8%	153.9	152.7	-0.8%	1.7	1.7
Belgium	8.4	8.6	1.9%	10.3	10.1	-2.2%	-1.8	-1.5
Bulgaria	0.8	0.8	11.7%	0.9	1.0	12.4%	-0.1	-0.1
Czech Republic	2.1	2.2	1.6%	2.6	2.4	-4.5%	-0.4	-0.3
Denmark	2.9	2.9	1.8%	1.9	1.8	-2.7%	1.0	1.1
Germany	43.7	43.1	-1.4%	28.5	28.2	-1.1%	15.2	14.9
Estonia	0.3	0.3	3.3%	0.3	0.2	-15.1%	0.0	0.1
Ireland	5.0	5.2	5.4%	1.6	1.7	1.5%	3.3	3.6
Greece	1.2	1.1	-5.9%	2.5	2.2	-14.3%	-1.4	-1.1
Spain	8.0	7.6	-5.3%	10.6	10.5	-0.8%	-2.6	-2.9
France	14.6	15.8	8.2%	14.5	14.1	-2.7%	0.1	1.7
Croatia	0.5	0.4	-13.1%	0.4	0.4	7.8%	0.1	0.0
Italy	16.3	15.8	-3.3%	13.5	13.5	0.1%	2.8	2.3
Cyprus	0.1	0.1	-9.0%	0.2	0.1	-32.2%	-0.1	0.0
Latvia	0.3	0.3	6.2%	0.2	0.2	-10.5%	0.0	0.1
Lithuania	0.9	0.9	4.4%	0.8	0.8	-2.8%	0.1	0.1
Luxembourg	0.3	0.2	-51.1%	0.3	0.5	42.5%	0.0	-0.3
Hungary	1.6	1.6	-0.1%	1.8	1.8	-0.2%	-0.3	-0.3
Malta	0.1	0.1	-2.3%	0.2	0.1	-52.8%	-0.1	0.0
Netherlands	11.9	12.2	2.3%	22.6	22.9	1.5%	-10.6	-10.7
Austria	3.5	3.5	2.0%	3.3	3.2	-2.9%	0.2	0.4
Poland	3.5	3.3	-4.1%	4.7	5.1	8.9%	-1.2	-1.7
Portugal	1.2	1.2	4.0%	1.4	1.3	-5.2%	-0.2	-0.1
Romania	1.3	1.4	0.6%	1.5	1.5	-4.4%	-0.2	-0.1
Slovenia	0.7	0.6	-4.7%	0.8	0.7	-5.8%	-0.1	-0.1
Slovakia	0.9	0.9	7.9%	1.2	1.2	-0.2%	-0.4	-0.3
Finland	2.1	1.9	-5.6%	1.8	1.5	-18.1%	0.2	0.5
Sweden	4.5	4.6	4.3%	3.3	3.2	-3.5%	1.1	1.4
United Kingdom	19.2	17.6	-8.1%	22.2	22.5	1.3%	-3.0	-4.9

The source dataset is available [here](#).

International trade in goods balance, seasonally adjusted, € bn

