

116/2016 - 15 June 2016

April 2016

Euro area international trade in goods surplus

€27.5 bn

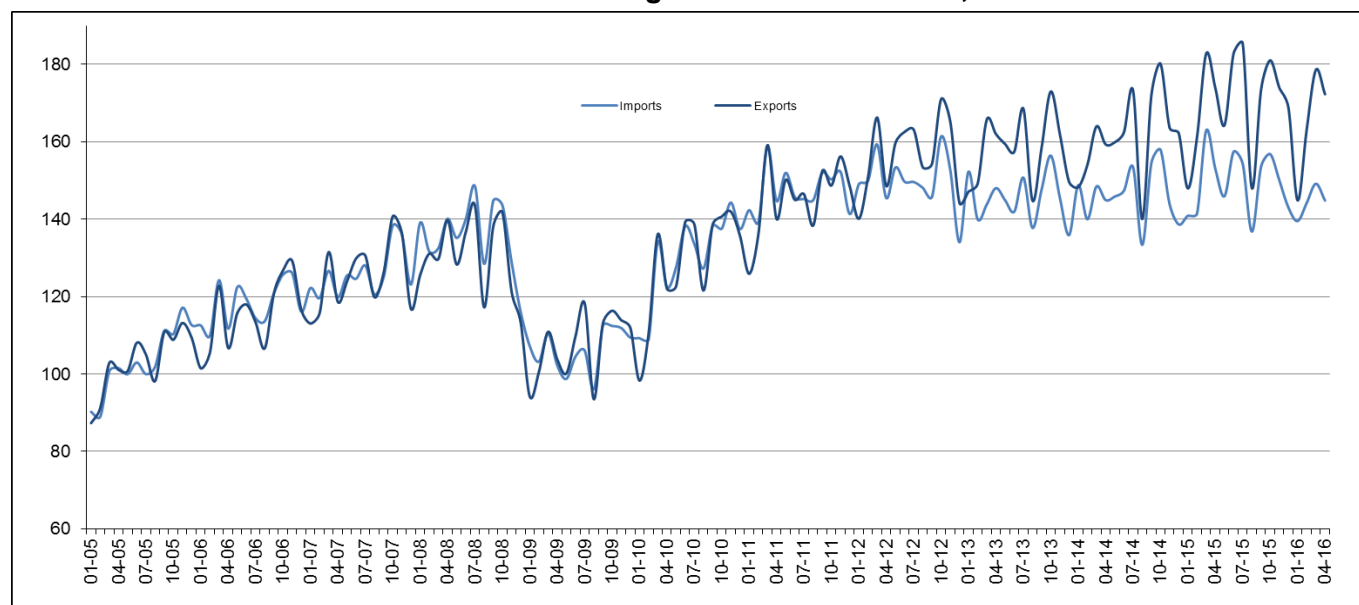
€5.6 bn surplus for EU28

Euro area

The first estimate for **euro area** (EA19) exports of goods to the rest of the world in April 2016 was €172.3 billion, a decrease of 1% compared with April 2015 (€173.9 bn). Imports from the rest of the world stood at €144.8 bn, a fall of 5% compared with April 2015 (€153.0 bn). As a result, the **euro area** recorded a €27.5 bn surplus in trade in goods with the rest of the world in April 2016, compared with +€20.9 bn in April 2015. **Intra-euro area** trade rose to €142.8 bn in April 2016, up by 1% compared with April 2015.

These data are released by **Eurostat, the statistical office of the European Union**.

International trade in goods of the euro area, € bn



In January to April 2016, **euro area** exports of goods to the rest of the world stood at €659.0 bn (-1% compared with January-April 2015), and imports at €577.7 bn (-3% compared with January-April 2015). As a result the **euro area** recorded a surplus of €81.3 bn, compared with +€67.6 bn in January-April 2015. **Intra-euro area** trade remained nearly stable at €565.3 bn in January-April 2016.

EA19 trade - non seasonally adjusted data

bn €

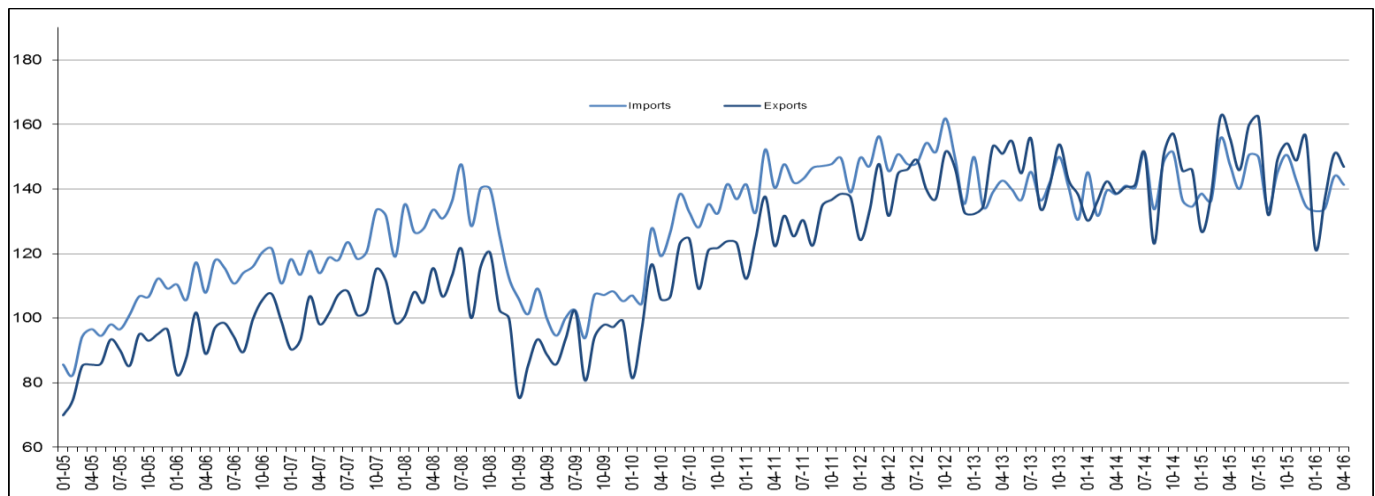
Flows	Apr 15	Apr 16	Growth	Jan-Apr 15	Jan-Apr 16	Growth
Extra-EA19 exports	173.9	172.3	-1%	665.9	659.0	-1%
Extra-EA19 imports	153.0	144.8	-5%	598.3	577.7	-3%
Extra-EA19 trade balance	20.9	27.5		67.6	81.3	
Intra-EA19 trade	141.8	142.8	1%	562.7	565.3	0%

The source dataset is available [here](#).

European Union

The first estimate for **extra-EU28** exports of goods in April 2016 was €146.9 billion, down by 6% compared with April 2015 (€155.7 bn). Imports from the rest of the world stood at €141.3 bn, down by 4% compared with April 2015 (€147.5 bn). As a result, the **EU28** recorded a €5.6 bn surplus in trade in goods with the rest of the world in April 2016, compared with +€8.2 bn in April 2015. **Intra-EU28** trade rose to €260.9 bn in April 2016, +2% compared with April 2015.

International trade in goods of the EU28, € bn



In January to April 2016, **extra-EU28** exports of goods stood at €556.4 bn (-5% compared with January-April 2015), and imports at €552.5 bn (-4% compared with January-April 2015). As a result, the **EU28** recorded a surplus of €3.9 bn, compared with +€4.7 bn in January-April 2015. **Intra-EU28** trade rose to €1 029.7 bn in January-April 2016, +1% compared with January-April 2015.

EU28 trade - non seasonally adjusted data

bn €

Flows	Apr 15	Apr 16	Growth	Jan-Apr 15	Jan-Apr 16	Growth
Extra-EU28 exports	155.7	146.9	-6%	583.0	556.4	-5%
Extra-EU28 imports	147.5	141.3	-4%	578.3	552.5	-4%
Extra-EU28 trade balance	8.2	5.6		4.7	3.9	
Intra-EU28 trade	255.5	260.9	2%	1 015.2	1 029.7	1%

The source dataset is available [here](#).

Main products - EU28

bn €

	Extra-EU28 exports			Extra-EU28 imports			Trade balance	
	Jan-Apr 15	Jan-Apr 16	Growth	Jan-Apr 15	Jan-Apr 16	Growth	Jan-Apr 15	Jan-Apr 16
Total	583.0	556.4	-5%	578.3	552.5	-4%	4.7	3.9
Primary goods:	80.3	71.4	-11%	174.2	134.0	-23%	-94.0	-62.6
<i>Food & drink</i>	36.7	36.9	1%	36.1	36.1	0%	0.6	0.9
<i>Raw materials</i>	15.3	14.0	-8%	24.6	22.6	-8%	-9.4	-8.6
<i>Energy</i>	28.3	20.5	-28%	113.5	75.4	-34%	-85.2	-54.9
Manufactured goods:	479.6	466.5	-3%	388.5	393.4	1%	91.0	73.1
<i>Chemicals</i>	104.2	101.7	-2%	63.1	64.1	2%	41.1	37.6
<i>Machinery & vehicles</i>	242.2	235.7	-3%	176.0	180.5	3%	66.1	55.3
<i>Other manuf'd goods</i>	133.2	129.0	-3%	149.4	148.9	0%	-16.2	-19.8
Other	23.2	18.5	-20%	15.5	25.0	61%	7.6	-6.6

The source dataset is available [here](#).

Main trading partners - EU28

bn €

	EU28 exports to			EU28 imports from			Trade balance	
	Jan-Apr 15	Jan-Apr 16	Growth	Jan-Apr 15	Jan-Apr 16	Growth	Jan-Apr 15	Jan-Apr 16
United States	121.3	118.2	-3%	84.2	83.6	-1%	37.1	34.6
China	54.4	53.4	-2%	113.6	110.6	-3%	-59.2	-57.2
Switzerland	50.8	46.6	-8%	33.6	38.6	15%	17.2	8.1
Russia	23.0	21.6	-6%	46.4	36.4	-22%	-23.4	-14.8
Turkey	26.7	25.9	-3%	20.3	22.2	10%	6.4	3.6
Japan	17.7	17.7	0%	20.3	22.6	11%	-2.6	-4.8
Norway	16.1	15.3	-5%	25.8	19.7	-24%	-9.7	-4.3
South Korea	15.8	14.2	-10%	13.9	14.3	2%	1.9	-0.1
India	12.9	12.3	-5%	14.1	13.8	-2%	-1.2	-1.5
Canada	11.4	11.2	-2%	10.2	9.8	-4%	1.2	1.3

The source dataset is available [here](#).

Member States' total trade (intra-EU + extra-EU)

bn €

	Total exports						Total imports						Trade balance					
	Total		Intra-EU		Extra-EU		Total		Intra-EU		Extra-EU		Total		Intra-EU		Extra-EU	
	Jan-Apr 16	Growth / Jan-Apr 15	Jan-Apr 16	Growth / Jan-Apr 15	Jan-Apr 16	Growth / Jan-Apr 15	Jan-Apr 16	Growth / Jan-Apr 15	Jan-Apr 16	Growth / Jan-Apr 15	Jan-Mar 16	Growth / Jan-Apr 15	Jan-Apr 16	Jan-Apr 15	Jan-Apr 16	Jan-Apr 15	Jan-Apr 16	Jan-Apr 15
Belgium	116.7	-2%	84.1	-2%	32.7	-4%	109.5	-3%	67.4	-4%	42.1	-3%	7.3	6.2	16.7	15.4	-9.4	-9.3
Bulgaria	7.2	-3%	4.9	3%	2.3	-14%	7.9	-8%	5.4	-1%	2.5	-20%	-0.7	-1.1	-0.5	-0.7	-0.2	-0.4
Czech Republic	50.0	7%	42.2	9%	7.7	0%	42.3	4%	33.6	7%	8.7	-5%	7.6	5.9	8.7	7.4	-1.0	-1.5
Denmark	28.1	-4%	17.2	-4%	10.8	-4%	24.9	-3%	18.0	2%	6.9	-13%	3.1	3.6	-0.8	0.2	3.9	3.3
Germany	400.1	1%	238.1	4%	161.9	-2%	313.7	0%	208.6	2%	105.1	-3%	86.4	81.3	29.6	25.1	56.8	56.2
Estonia	3.8	-1%	2.9	-1%	1.0	0%	4.4	3%	3.6	6%	0.8	-9%	-0.6	-0.4	-0.8	-0.5	0.2	0.1
Ireland	36.0	1%	18.7	0%	17.3	3%	19.9	-9%	13.6	-2%	6.3	-22%	16.1	13.5	5.0	4.7	11.0	8.8
Greece	7.8	-8%	4.6	1%	3.2	-17%	14.3	-4%	7.8	1%	6.6	-9%	-6.5	-6.4	-3.1	-3.1	-3.4	-3.3
Spain	84.9	2%	57.3	5%	27.6	-4%	90.8	-1%	56.1	2%	34.6	-7%	-5.9	-8.6	1.2	-0.2	-7.1	-8.4
France	150.2	-1%	91.7	0%	58.5	-3%	173.0	1%	120.5	4%	52.5	-5%	-22.8	-19.4	-28.8	-24.8	6.0	5.4
Croatia	3.7	3%	2.4	2%	1.2	4%	6.1	3%	4.9	5%	1.2	-4%	-2.4	-2.3	-2.4	-2.3	0.0	-0.1
Italy	134.1	-1%	76.7	3%	57.4	-5%	120.4	-3%	72.8	1%	47.6	-8%	13.6	11.0	3.9	2.7	9.8	8.3
Cyprus	0.5	-23%	0.2	-34%	0.3	-10%	1.5	-9%	1.1	-8%	0.4	-12%	-1.0	-1.0	-0.9	-0.8	-0.1	-0.1
Latvia	3.3	-6%	2.3	-8%	1.0	-2%	3.9	-7%	3.1	-5%	0.8	-16%	-0.6	-0.7	-0.8	-0.8	0.2	0.0
Lithuania	7.0	-1%	4.3	-3%	2.7	4%	7.6	-5%	5.4	1%	2.2	-17%	-0.6	-1.0	-1.1	-0.9	0.4	-0.1
Luxembourg	5.0	-2%	4.2	-3%	0.9	4%	6.4	-11%	4.9	-4%	1.5	-29%	-1.3	-2.0	-0.7	-0.8	-0.6	-1.2
Hungary	30.2	3%	24.9	4%	5.3	-3%	27.6	1%	21.4	3%	6.2	-6%	2.6	2.1	3.5	3.1	-0.9	-1.0
Malta	0.8	-7%	0.3	1%	0.5	-12%	2.0	18%	0.8	-14%	1.2	61%	-1.2	-0.9	-0.5	-0.6	-0.7	-0.2
Netherlands	163.9	-3%	125.0	-2%	38.9	-5%	143.3	-5%	67.9	0%	75.5	-8%	20.5	18.6	57.1	60.1	-36.6	-41.5
Austria	45.5	1%	32.3	3%	13.2	-1%	46.4	0%	35.9	2%	10.6	-6%	-0.9	-1.5	-3.6	-3.7	2.6	2.1
Poland	60.1	2%	48.3	2%	11.7	-1%	57.0	-1%	41.0	0%	16.0	-4%	3.1	1.4	7.4	6.3	-4.3	-4.9
Portugal	16.1	-2%	12.5	4%	3.6	-18%	19.2	-1%	15.1	0%	4.1	-7%	-3.1	-3.0	-2.6	-3.0	-0.5	0.0
Romania	18.6	4%	14.1	7%	4.4	-4%	21.4	8%	16.7	9%	4.6	2%	-2.8	-2.0	-2.6	-2.1	-0.2	0.1
Slovenia	9.7	3%	7.5	3%	2.3	3%	8.8	0%	6.2	0%	2.7	-1%	0.9	0.6	1.3	1.1	-0.4	-0.5
Slovakia	22.5	2%	19.4	3%	3.1	-1%	21.5	2%	17.3	5%	4.2	-8%	1.0	1.0	2.0	2.4	-1.1	-1.4
Finland	16.4	-8%	9.8	-6%	6.7	-11%	17.4	-4%	12.8	-2%	4.5	-11%	-0.9	-0.3	-3.1	-2.6	2.1	2.4
Sweden	41.5	0%	24.8	1%	16.7	-3%	40.6	0%	29.3	4%	11.3	-8%	0.9	1.3	-4.5	-3.6	5.4	4.9
United Kingdom	122.4	-9%	58.9	-3%	63.5	-14%	188.7	1%	96.9	-3%	91.8	5%	-66.2	-52.0	-38.0	-39.1	-28.3	-12.9

The source dataset is available [here](#).

Geographical information

The **euro area** (EA19) includes Belgium, Germany, Estonia, Ireland, Greece, Spain, France, Italy, Cyprus, Latvia, Lithuania, Luxembourg, Malta, the Netherlands, Austria, Portugal, Slovenia, Slovakia and Finland.

The **European Union** (EU28) includes Belgium, Bulgaria, the Czech Republic, Denmark, Germany, Estonia, Ireland, Greece, Spain, France, Croatia, Italy, Cyprus, Latvia, Lithuania, Luxembourg, Hungary, Malta, the Netherlands, Austria, Poland, Portugal, Romania, Slovenia, Slovakia, Finland, Sweden and the United Kingdom.

Methods and definitions

Since the introduction of Intrastat for intra-EU trade on 1 January 1993, the value of dispatches has been consistently higher than that of arrivals. In theory, as dispatches are declared FOB and arrivals CIF, the value of arrivals should be slightly higher than that of dispatches. Eurostat uses dispatches as the more reliable measure of total intra-EU trade as, at aggregated levels, total dispatches has better coverage than total arrivals. Due to this divergence in intra-EU trade, and to the difficulties of interpreting figures in absolute terms at the level of individual Member States, trade balances for individual Member States must be interpreted with caution. The same caution applies to the trade balance of the euro area, which includes some intra-EU trade.

National concepts may differ from the harmonised methodology used by Eurostat, leading to differences between figures in this release and those published nationally, both for raw data and for seasonally adjusted series.

Products are classified according to the Standard international trade classification (SITC), Revision 4.

Revisions and timetable

This News Release is based on data available on 10 June 2016. These are provisional figures based on information provided by Member States. They are subject to frequent revision for up to two years after the month in question.

For more information

Eurostat website section on international trade in goods

Eurostat database section on international trade in goods

Eurostat Statistics Explained article on international trade in goods statistics


Eurostat €-indicators release calendar

Issued by: **Eurostat Press Office**

Tim ALLEN

Tel: +352-4301-33 444

eurostat-pressoffice@ec.europa.eu

 ec.europa.eu/eurostat/


For further information on data:

Anne BERTHOMIEU-CRISTALLO

Tel: +352-4301-33 616

estat-etfree@ec.europa.eu

 [@EU_Eurostat](https://twitter.com/EU_Eurostat)

 **Media requests:** Eurostat media support / Tel: +352-4301-33 408 / eurostat-mediasupport@ec.europa.eu

Annex - Seasonally adjusted data

In April 2016 compared with March 2016, **euro area** seasonally adjusted exports increased by 4.9% and imports by 2.6%. The seasonally adjusted balance was +€28.0 bn, an increase compared with March (+€23.7 bn).

EA19 trade - seasonally adjusted data

bn €

Flows	May 15	Jun 15	Jul 15	Aug 15	Sep 15	Oct 15	Nov 15	Dec 15	Jan 16	Feb 16	Mar 16	Apr 16
Extra-EA19 exports	170.3	171.8	172.9	166.6	168.0	168.4	171.0	171.0	166.8	167.9	166.6	174.7
Extra-EA19 imports	149.0	152.6	150.5	147.2	148.2	148.5	147.9	148.3	146.2	147.3	142.9	146.6
Extra-EA19 trade balance	21.3	19.3	22.5	19.4	19.8	19.9	23.1	22.8	20.6	20.6	23.7	28.0
Intra-EA19 trade	140.1	143.8	142.8	139.9	140.9	141.4	142.2	141.5	139.8	140.7	138.4	142.1

The source dataset is available [here](#).

In April 2016 compared with March 2016, **EU28** seasonally adjusted exports rose by 4.7% and imports by 2.4%. The seasonally adjusted balance was +€4.9 bn, an increase compared with March (+€1.6 bn).

EU28 trade - seasonally adjusted data

bn €

Flows	May 15	Jun 15	Jul 15	Aug 15	Sep 15	Oct 15	Nov 15	Dec 15	Jan 16	Feb 16	Mar 16	Apr 16
Extra-EU28 exports	150.1	151.0	150.8	145.9	146.2	145.2	147.0	151.3	142.6	143.5	142.3	148.9
Extra-EU28 imports	143.4	146.8	144.5	140.1	141.2	142.7	141.3	139.6	138.1	138.3	140.7	144.0
Extra-EU28 trade balance	6.7	4.3	6.4	5.8	5.0	2.5	5.7	11.7	4.6	5.3	1.6	4.9
Intra-EU28 trade	254.4	259.7	258.2	253.8	256.4	257.7	260.0	257.5	255.1	258.1	253.3	260.9

The source dataset is available [here](#).

Contribution of EU28 Member States to extra-EU28 trade - seasonally adjusted data

bn €

	Total exports			Total imports			Trade balance	
	Mar 16	Apr 16	Growth	Mar 16	Apr 16	Growth	Mar 16	Apr 16
EU28	142.3	148.9	4.7%	140.7	144.0	2.4%	1.6	4.9
Belgium	7.9	8.4	7.3%	9.7	10.7	10.9%	-1.8	-2.3
Bulgaria	0.6	0.6	-6.2%	0.7	0.7	0.3%	0.0	-0.1
Czech Republic	1.9	2.0	2.9%	2.2	2.3	1.7%	-0.3	-0.3
Denmark	2.9	2.7	-4.8%	1.8	1.7	-0.6%	1.1	1.0
Germany	41.4	44.1	6.6%	26.6	26.1	-2.1%	14.7	18.0
Estonia	0.3	0.3	4.2%	0.2	0.2	19.9%	0.1	0.1
Ireland	4.5	4.5	1.2%	1.8	1.6	-10.9%	2.7	2.9
Greece	0.8	0.9	9.3%	1.6	1.8	13.3%	-0.7	-0.9
Spain	7.3	7.2	-1.0%	8.7	8.3	-3.9%	-1.4	-1.1
France	15.0	15.0	0.4%	12.7	13.4	5.2%	2.2	1.6
Croatia	0.3	0.3	-0.1%	0.3	0.4	16.9%	0.0	0.0
Italy	14.7	16.4	11.5%	11.4	12.4	8.8%	3.3	4.0
Cyprus	0.1	0.1	-8.7%	0.1	0.1	-1.8%	0.0	0.0
Latvia	0.3	0.3	2.4%	0.2	0.2	-6.5%	0.1	0.1
Lithuania	0.8	0.7	-5.5%	0.6	0.6	-5.3%	0.2	0.2
Luxembourg	0.2	0.2	10.6%	0.3	0.4	49.7%	-0.1	-0.2
Hungary	1.3	1.4	9.3%	1.6	1.6	-0.5%	-0.2	-0.1
Malta	0.2	0.1	-65.8%	0.2	0.3	17.2%	0.0	-0.2
Netherlands	9.6	10.7	11.4%	19.0	19.1	0.4%	-9.4	-8.4
Austria	3.3	3.6	9.1%	2.5	2.4	-5.4%	0.8	1.2
Poland	3.1	3.2	2.8%	4.1	4.2	1.6%	-1.0	-1.0
Portugal	1.0	1.0	-4.5%	1.2	1.0	-19.1%	-0.2	0.0
Romania	1.1	1.2	8.3%	1.2	1.3	6.6%	-0.1	-0.1
Slovenia	0.6	0.6	9.1%	0.7	0.6	-3.6%	-0.1	0.0
Slovakia	0.8	0.8	5.2%	1.0	1.1	3.6%	-0.2	-0.2
Finland	1.8	1.7	-3.3%	1.2	1.2	1.4%	0.6	0.5
Sweden	4.3	4.4	1.6%	2.9	2.8	-2.8%	1.4	1.5
United Kingdom	16.3	16.3	0.1%	26.1	27.6	5.6%	-9.8	-11.2

The source dataset is available [here](#).

International trade in goods balance, seasonally adjusted, € bn

