

51/2016 - 17 March 2016

January 2016

Euro area international trade in goods surplus €6.2 bn

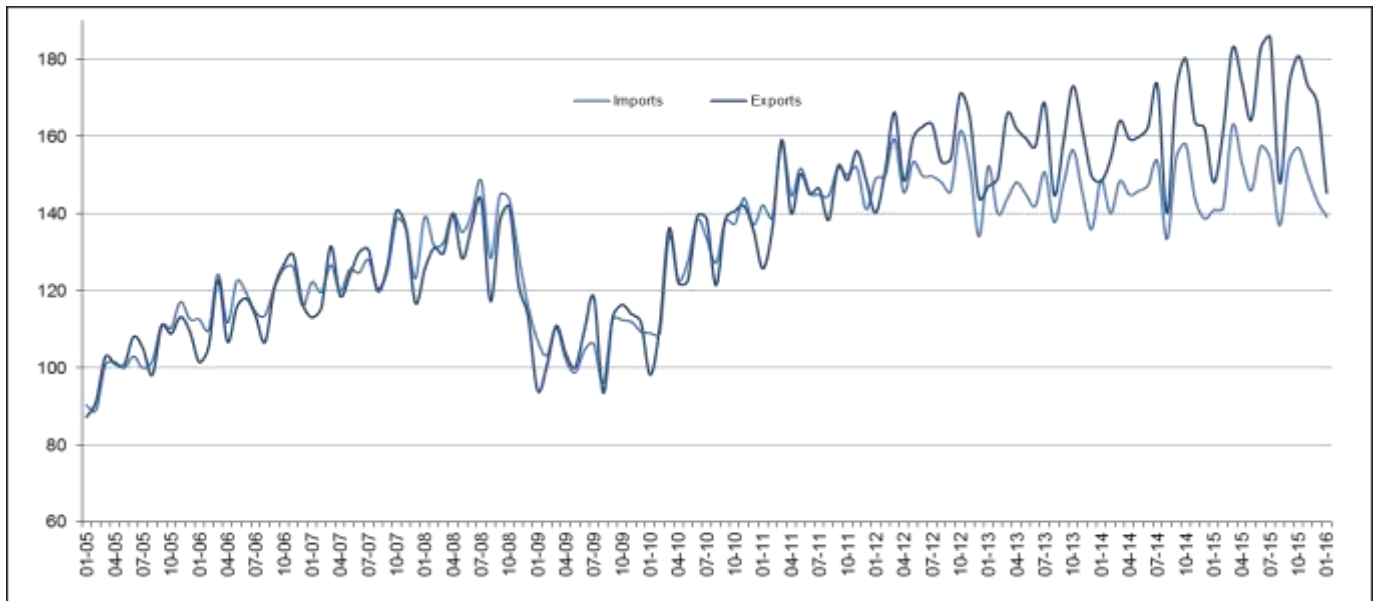
€11.0 bn deficit for EU28

Euro area

The first estimate for **euro area** (EA19) exports of goods to the rest of the world in January 2016 was €145.3 billion, a decrease of 2% compared with January 2015 (€148.0 bn). Imports from the rest of the world stood at €139.1 bn, a fall of 1% compared with January 2015 (€140.9 bn). As a result, the **euro area** recorded a €6.2 bn surplus in trade in goods with the rest of the world in January 2016, compared with +€7.1 bn in January 2015. **Intra-euro area** trade remained stable at €132.5 bn in January 2016 compared with January 2015.

These data are released by **Eurostat, the statistical office of the European Union.**

International trade in goods of the euro area, € bn



In 2015, **euro area** exports of goods to the rest of the world rose to €2 043.0 bn (an increase of 5% compared with 2014), while imports rose to €1 796.4 bn (an increase of 2% compared with 2014). As a result the **euro area** recorded a surplus of €246.6 bn, compared with +€182.4 bn in 2014. **Intra-euro area** trade rose to €1 691.1 bn in 2015, up by 3% compared with 2014.

EA19 trade - non seasonally adjusted data

bn €

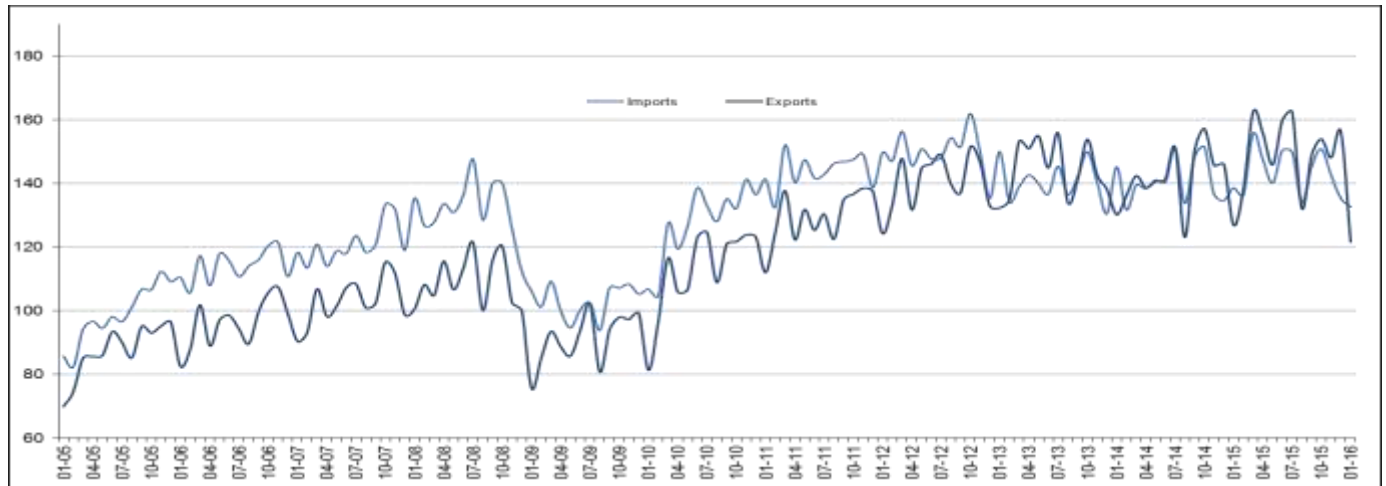
Flows	Jan 15	Jan 16	Growth	Jan-Dec 14	Jan-Dec 15	Growth
Extra-EA19 exports	148.0	145.3	-2%	1 939.4	2 043.0	5%
Extra-EA19 imports	140.9	139.1	-1%	1 757.0	1 796.4	2%
Extra-EA19 trade balance	7.1	6.2		182.4	246.6	
Intra-EA19 trade	132.5	132.5	0%	1 642.5	1 691.1	3%

The source dataset is available [here](#).

European Union

The first estimate for **extra-EU28** exports of goods in January 2016 was €121.6 billion, down by 4% compared with January 2015 (€126.9 bn). Imports from the rest of the world stood at €132.7 bn, also down by 4% compared with January 2015 (€138.6 bn). As a result, the **EU28** recorded a €11.0 bn deficit in trade in goods with the rest of the world in January 2016, compared with -€11.8 bn in January 2015. **Intra-EU28** trade rose to €239.6 bn in January 2016, +1% compared with January 2015.

International trade in goods of the EU28, € bn



In 2015, **extra-EU28** exports of goods rose to €1 790.7 bn (an increase of 5% compared with 2014), while imports rose to €1 726.5 bn (an increase of 2% compared with 2014). As a result, the **EU28** recorded a surplus of €64.2 bn, compared with +€11.1 bn in 2014. **Intra-EU28 trade** rose to €3 070.3 bn in 2015, +5% compared with 2014.

EU28 trade - non seasonally adjusted data

bn €

Flows	Jan 15	Jan 16	Growth	Jan-Dec 14	Jan-Dec 15	Growth
Extra-EU28 exports	126.9	121.6	-4%	1 703.0	1 790.7	5%
Extra-EU28 imports	138.6	132.7	-4%	1 691.9	1 726.5	2%
Extra-EU28 trade balance	-11.8	-11.0		11.1	64.2	
Intra-EU28 trade	237.7	239.6	1%	2 932.3	3 070.3	5%

The source dataset is available [here](#).

Main products - EU28

bn €

	Extra-EU28 exports			Extra-EU28 imports			Trade balance	
	Jan 15	Jan 16	Growth	Jan 15	Jan 16	Growth	Jan 15	Jan 16
Total	126.9	121.6	-4%	138.6	132.7	-4%	-11.8	-11.0
Primary goods:	17.8	16.3	-8%	41.3	34.3	-17%	-23.5	-18.0
<i>Food & drink</i>	8.0	8.1	1%	8.9	9.0	1%	-0.9	-0.8
<i>Raw materials</i>	3.4	3.0	-13%	6.1	5.6	-8%	-2.7	-2.6
<i>Energy</i>	6.4	5.2	-18%	26.3	19.7	-25%	-20.0	-14.5
Manufactured goods:	104.1	99.6	-4%	93.1	94.4	1%	11.0	5.2
<i>Chemicals</i>	23.6	22.7	-4%	14.7	15.9	8%	8.9	6.8
<i>Machinery & vehicles</i>	51.5	48.5	-6%	41.4	41.7	1%	10.0	6.8
<i>Other manuf'd goods</i>	29.0	28.4	-2%	37.0	36.8	0%	-7.9	-8.4
Other	4.9	5.7	16%	4.2	4.0	-6%	0.7	1.8

The source dataset is available [here](#).

Main trading partners - EU28

bn €

	EU28 exports to			EU28 imports from			Trade balance	
	Jan 15	Jan 16	Growth	Jan 15	Jan 16	Growth	Jan 15	Jan 16
United States	26.1	25.0	-4%	18.6	18.3	-2%	7.6	6.7
China	11.9	11.8	-1%	30.4	30.3	0%	-18.4	-18.5
Switzerland	12.0	12.3	3%	7.8	8.0	3%	4.2	4.3
Russia	5.0	4.2	-17%	10.3	8.6	-17%	-5.3	-4.4
Turkey	5.7	5.4	-6%	4.8	4.9	2%	0.9	0.5
Japan	4.2	4.1	-2%	4.7	5.1	9%	-0.5	-1.0
Norway	3.7	3.6	-4%	6.4	5.3	-17%	-2.6	-1.7
South Korea	3.5	3.2	-10%	3.4	3.2	-6%	0.1	0.0
India	2.7	2.6	-4%	3.3	3.3	0%	-0.6	-0.7
Canada	2.4	2.4	2%	2.6	2.4	-8%	-0.2	0.0

The source dataset is available [here](#).

Member States' total trade (intra-EU + extra-EU)

bn €

	Total exports						Total imports						Trade balance					
	Total		Intra-EU		Extra-EU		Total		Intra-EU		Extra-EU		Total		Intra-EU		Extra-EU	
	Jan 16	Growth / Jan 15	Jan 16	Growth / Jan 15	Jan 16	Growth / Jan 15	Jan 16	Growth / Jan 15	Jan 16	Growth / Jan 15	Jan 16	Growth / Jan 15	Jan 16	Jan 15	Jan 16	Jan 15	Jan 16	Jan 15
Belgium	28.4	4%	21.2	7%	7.1	-4%	26.5	1%	16.0	0%	10.5	4%	1.9	1.2	5.2	3.9	-3.3	-2.6
Bulgaria	1.7	1%	1.2	-2%	0.6	6%	1.8	-8%	1.2	-2%	0.6	-18%	0.0	-0.2	0.0	0.0	0.0	-0.2
Czech Republic	11.8	9%	10.0	11%	1.7	1%	9.9	4%	7.6	7%	2.3	-5%	1.9	1.3	2.4	2.0	-0.6	-0.7
Denmark	6.5	-5%	4.0	-7%	2.6	0%	6.0	-6%	4.1	-4%	1.9	-10%	0.6	0.5	-0.1	0.0	0.6	0.4
Germany	88.9	-1%	54.7	1%	34.2	-5%	75.1	2%	48.4	3%	26.7	-1%	13.7	16.2	6.3	7.1	7.5	9.1
Estonia	0.8	-10%	0.7	-7%	0.2	-20%	1.0	2%	0.8	6%	0.2	-11%	-0.2	0.0	-0.2	-0.1	0.0	0.0
Ireland	8.9	9%	5.0	18%	3.9	-1%	4.6	-10%	3.2	0%	1.4	-27%	4.3	3.1	1.8	1.0	2.5	2.1
Greece	1.7	-8%	1.1	0%	0.6	-19%	2.9	-7%	1.6	-5%	1.3	-9%	-1.2	-1.3	-0.6	-0.6	-0.6	-0.6
Spain	18.6	-1%	12.9	1%	5.7	-5%	20.8	-1%	12.2	-2%	8.6	0%	-2.2	-2.3	0.7	0.3	-2.9	-2.6
France	34.6	0%	21.1	0%	13.5	0%	40.5	0%	27.7	0%	12.8	0%	-5.9	-5.7	-6.6	-6.5	0.7	0.8
Croatia	0.7	1%	0.5	4%	0.2	-6%	1.2	4%	1.0	-2%	0.2	32%	-0.4	-0.4	-0.4	-0.5	0.0	0.1
Italy	28.0	-4%	16.7	0%	11.2	-8%	27.9	-3%	16.2	-1%	11.7	-7%	0.0	0.1	0.5	0.5	-0.5	-0.3
Cyprus	0.1	-56%	0.1	-73%	0.1	10%	0.3	-16%	0.2	-14%	0.1	-20%	-0.2	-0.1	-0.2	-0.1	0.0	0.0
Latvia	0.7	-11%	0.5	-13%	0.2	-6%	0.8	-12%	0.6	-11%	0.2	-15%	-0.1	-0.1	-0.1	-0.1	0.0	0.0
Lithuania	1.6	2%	1.0	0%	0.6	6%	1.6	-7%	1.1	-3%	0.5	-14%	0.0	-0.2	0.0	-0.1	0.0	-0.1
Luxembourg	1.2	-2%	1.0	3%	0.2	-21%	1.5	-5%	1.1	-3%	0.4	-11%	-0.2	-0.3	-0.1	-0.1	-0.2	-0.2
Hungary	6.7	1%	5.6	2%	1.2	-3%	6.4	4%	4.8	3%	1.6	5%	0.4	0.5	0.8	0.8	-0.4	-0.3
Malta	0.2	3%	0.1	32%	0.1	-20%	0.3	-4%	0.2	-3%	0.1	-6%	-0.1	-0.1	-0.1	-0.1	0.0	0.0
Netherlands	39.6	-2%	30.2	-2%	9.4	-4%	34.2	-4%	16.1	1%	18.0	-8%	5.4	5.0	14.1	14.8	-8.6	-9.8
Austria	9.9	-2%	7.1	-3%	2.9	0%	10.8	1%	7.8	0%	3.0	5%	-0.9	-0.6	-0.8	-0.6	-0.1	0.0
Poland	13.4	-3%	11.0	-1%	2.4	-8%	12.7	-4%	8.9	-2%	3.8	-8%	0.7	0.5	2.0	2.0	-1.4	-1.5
Portugal	3.7	-1%	2.9	5%	0.8	-19%	4.4	-1%	3.4	0%	1.0	-5%	-0.6	-0.6	-0.5	-0.6	-0.2	-0.1
Romania	4.1	-2%	3.2	3%	0.9	-15%	4.5	3%	3.5	4%	1.0	-1%	-0.4	-0.2	-0.3	-0.3	-0.1	0.1
Slovenia	2.2	2%	1.7	1%	0.5	5%	1.9	-5%	1.3	-5%	0.6	-4%	0.3	0.1	0.4	0.3	-0.1	-0.2
Slovakia	5.2	3%	4.5	4%	0.6	-3%	5.0	4%	4.0	6%	1.0	-3%	0.2	0.2	0.6	0.7	-0.4	-0.4
Finland	3.6	-10%	2.2	-9%	1.4	-12%	3.9	-9%	2.8	-6%	1.1	-14%	-0.3	-0.3	-0.6	-0.6	0.3	0.3
Sweden	9.4	-1%	5.8	0%	3.7	-3%	9.3	0%	6.5	0%	2.8	-2%	0.1	0.2	-0.8	-0.7	0.9	1.0
United Kingdom	28.9	-3%	13.7	-4%	15.2	-2%	41.6	-5%	22.2	-1%	19.4	-10%	-12.6	-14.1	-8.4	-8.1	-4.2	-6.0

The source dataset is available [here](#).

Geographical information

The **euro area** (EA19) includes Belgium, Germany, Estonia, Ireland, Greece, Spain, France, Italy, Cyprus, Latvia, Lithuania, Luxembourg, Malta, the Netherlands, Austria, Portugal, Slovenia, Slovakia and Finland.

The **European Union** (EU28) includes Belgium, Bulgaria, the Czech Republic, Denmark, Germany, Estonia, Ireland, Greece, Spain, France, Croatia, Italy, Cyprus, Latvia, Lithuania, Luxembourg, Hungary, Malta, the Netherlands, Austria, Poland, Portugal, Romania, Slovenia, Slovakia, Finland, Sweden and the United Kingdom.

Methods and definitions

Since the introduction of Intrastat for intra-EU trade on 1 January 1993, the value of dispatches has been consistently higher than that of arrivals. In theory, as dispatches are declared FOB and arrivals CIF, the value of arrivals should be slightly higher than that of dispatches. Eurostat uses dispatches as the more reliable measure of total intra-EU trade as, at aggregated levels, total dispatches has better coverage than total arrivals. Due to this divergence in intra-EU trade, and to the difficulties of interpreting figures in absolute terms at the level of individual Member States, trade balances for individual Member States must be interpreted with caution. The same caution applies to the trade balance of the euro area, which includes some intra-EU trade.

National concepts may differ from the harmonised methodology used by Eurostat, leading to differences between figures in this release and those published nationally, both for raw data and for seasonally adjusted series.

Products are classified according to the Standard international trade classification (SITC), Revision 4.

Revisions and timetable

This News Release is based on data available on 14 March 2016. These are provisional figures based on information provided by Member States. They are subject to frequent revision for up to two years after the month in question.

For more information

Eurostat's website section on international trade in goods

Eurostat's database section on international trade in goods

Eurostat's Statistics Explained article on international trade in goods statistics


Eurostat's €-indicators release calendar

Issued by: **Eurostat Press Office**

Tim ALLEN

Tel: +352-4301-33 444

eurostat-pressoffice@ec.europa.eu

 ec.europa.eu/eurostat/


For further information on data:

Anne BERTHOMIEU-CRISTALLO

Tel: +352-4301-33 616

estat-etfree@ec.europa.eu

 [@EU_Eurostat](https://twitter.com/EU_Eurostat)

 **Media requests:** Eurostat media support / Tel: +352-4301-33 408 / eurostat-mediasupport@ec.europa.eu

Annex - Seasonally adjusted data

In January 2016 compared with December 2015, **euro area** seasonally adjusted exports decreased by 1.9% and imports by 1.3%. The seasonally adjusted balance was +€21.2 bn, a fall compared with December (+€22.5 bn).

EA19 trade - seasonally adjusted data

bn €

Flows	Feb 15	Mar 15	Apr 15	May 15	Jun 15	Jul 15	Aug 15	Sep 15	Oct 15	Nov 15	Dec 15	Jan 16
Extra-EA19 exports	172.2	172.6	171.4	170.5	171.9	173.0	166.6	167.7	168.1	170.4	170.7	167.4
Extra-EA19 imports	149.0	155.1	151.9	149.3	152.6	150.4	147.3	148.1	148.7	148.1	148.2	146.2
Extra-EA19 trade balance	23.2	17.5	19.5	21.2	19.4	22.6	19.4	19.6	19.5	22.3	22.5	21.2
Intra-EA19 trade	139.3	140.3	140.6	140.3	143.9	142.6	139.8	141.0	141.5	142.1	141.6	140.2

The source dataset is available [here](#).

In January 2016 compared with December 2015, **EU28** seasonally adjusted exports fell by 5.2% and imports by 1.3%. The seasonally adjusted balance was +€5.7 bn, a fall compared with December (+€11.8 bn).

EU28 trade - seasonally adjusted data

bn €

Flows	Feb 15	Mar 15	Apr 15	May 15	Jun 15	Jul 15	Aug 15	Sep 15	Oct 15	Nov 15	Dec 15	Jan 16
Extra-EU28 exports	148.7	153.6	152.4	150.1	151.1	151.0	146.2	146.3	145.4	146.9	151.7	143.8
Extra-EU28 imports	144.2	150.7	146.5	143.7	146.8	144.5	140.3	141.4	143.0	141.7	139.9	138.1
Extra-EU28 trade balance	4.4	2.9	5.9	6.5	4.3	6.5	5.8	4.8	2.4	5.2	11.8	5.7
Intra-EU28 trade	253.5	255.7	253.8	254.7	259.9	258.0	253.7	256.4	257.7	259.8	257.2	255.0

The source dataset is available [here](#).

Contribution of EU28 Member States to extra-EU28 trade - seasonally adjusted data

bn €

	Total exports			Total imports			Trade balance	
	Dec 15	Jan 16	Growth	Dec 15	Jan 16	Growth	Dec 15	Jan 16
EU28	151.7	143.8	-5.2%	139.9	138.1	-1.3%	11.8	5.7
Belgium	8.4	8.2	-2.6%	10.6	10.7	1.5%	-2.1	-2.5
Bulgaria	0.7	0.7	2.5%	0.7	0.7	-5.5%	0.0	0.0
Czech Republic	2.0	2.0	3.0%	2.5	2.4	-2.4%	-0.5	-0.4
Denmark	2.9	2.7	-5.6%	1.9	1.9	0.7%	1.0	0.8
Germany	41.2	40.3	-2.1%	26.5	26.8	1.2%	14.7	13.6
Estonia	0.2	0.2	-14.6%	0.2	0.2	-6.9%	0.1	0.0
Ireland	4.7	4.5	-3.4%	1.9	1.6	-13.1%	2.8	2.9
Greece	0.9	0.8	-12.5%	1.7	1.6	-4.3%	-0.7	-0.8
Spain	7.4	7.1	-3.9%	9.0	9.1	0.9%	-1.6	-1.9
France	15.6	15.4	-0.8%	13.7	13.5	-0.9%	1.9	1.9
Croatia	0.3	0.3	-2.7%	0.4	0.3	-15.7%	0.0	0.0
Italy	15.8	14.6	-7.9%	12.1	12.0	-1.1%	3.7	2.6
Cyprus	0.1	0.1	13.6%	0.1	0.1	-9.2%	0.0	0.0
Latvia	0.3	0.3	-6.2%	0.2	0.2	-2.8%	0.1	0.1
Lithuania	0.8	0.7	-4.9%	0.7	0.5	-24.3%	0.1	0.2
Luxembourg	0.2	0.2	-6.9%	0.4	0.4	-7.6%	-0.2	-0.2
Hungary	1.4	1.4	-3.4%	1.6	1.6	-0.1%	-0.2	-0.2
Malta	0.1	0.1	-28.7%	0.1	0.1	-21.9%	0.0	0.0
Netherlands	10.6	10.5	-1.7%	20.2	18.9	-6.5%	-9.5	-8.4
Austria	3.4	3.6	3.6%	2.8	2.8	2.3%	0.6	0.7
Poland	3.2	3.0	-6.3%	4.1	4.0	-2.2%	-0.9	-1.0
Portugal	1.1	1.0	-13.8%	1.2	1.1	-11.5%	-0.1	-0.1
Romania	1.1	1.1	-0.6%	1.1	1.2	2.6%	0.0	0.0
Slovenia	0.6	0.6	0.7%	0.7	0.6	-5.4%	-0.1	0.0
Slovakia	0.8	0.8	3.2%	1.2	1.2	0.6%	-0.4	-0.3
Finland	1.9	1.6	-12.0%	1.2	1.2	-1.3%	0.7	0.4
Sweden	4.5	4.2	-8.2%	3.1	3.0	-3.6%	1.5	1.2
United Kingdom	21.3	17.7	-17.2%	20.3	20.5	1.0%	1.0	-2.9

The source dataset is available [here](#).

International trade in goods balance, seasonally adjusted, € bn

