

33/2016 - 15 February 2016

First estimate for 2015

## Euro area international trade in goods surplus €246.0 bn

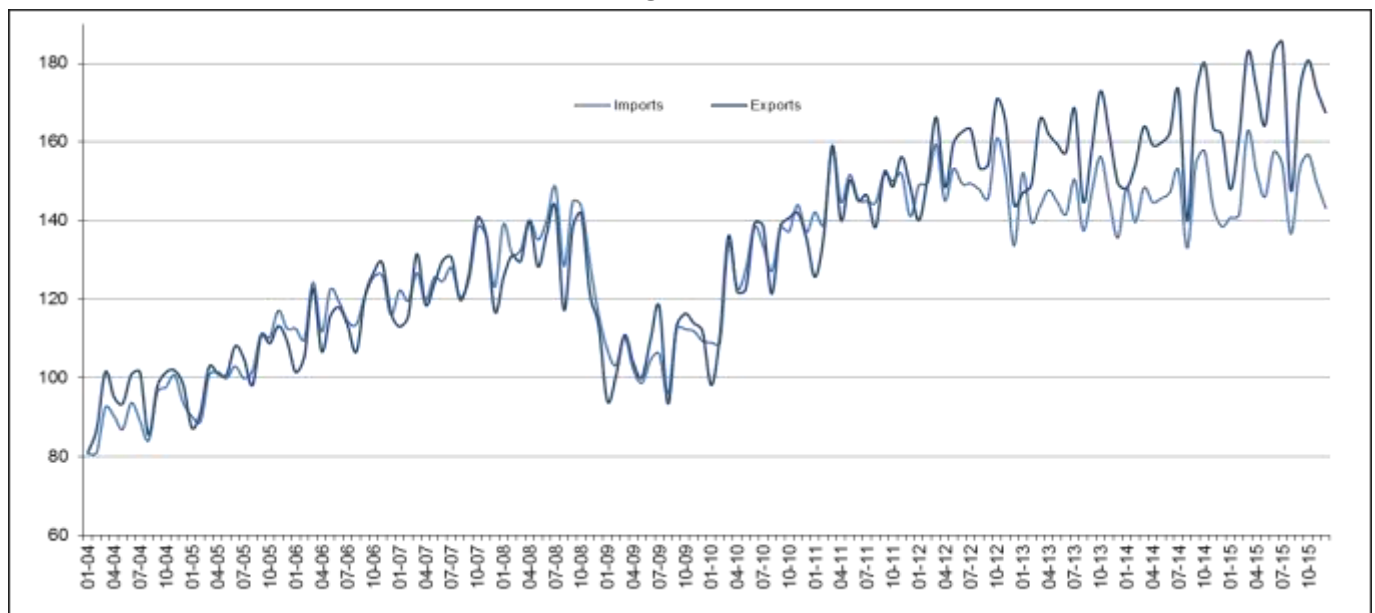
€64.2 bn surplus for EU28

### Euro area

The first estimate for **euro area** (EA19) exports of goods to the rest of the world in December 2015 was €167.5 billion, an increase of 3% compared with December 2014 (€162.1 bn). Imports from the rest of the world stood at €143.2 bn, also a rise of 3% compared with December 2014 (€138.5 bn). As a result, the **euro area** recorded a €24.3 bn surplus in trade in goods with the rest of the world in December 2015, compared with +€23.6 bn in December 2014. **Intra-euro area** trade rose to €130.3 bn in December 2015, up by 2% compared with December 2014.

These data are released by **Eurostat**, the statistical office of the European Union.

International trade in goods of the euro area, € bn



In 2015, **euro area** exports of goods to the rest of the world rose to €2 040.2 bn (an increase of 5% compared with 2014), while imports rose to €1 794.2 bn (an increase of 2% compared with 2014). As a result, the **euro area** recorded a surplus of €246.0 bn, compared with +€184.3 bn in 2014. **Intra-euro area** trade rose to €1 689.0 bn in 2015, up by 3% compared with 2014.

### EA19 trade - non seasonally adjusted data

bn €

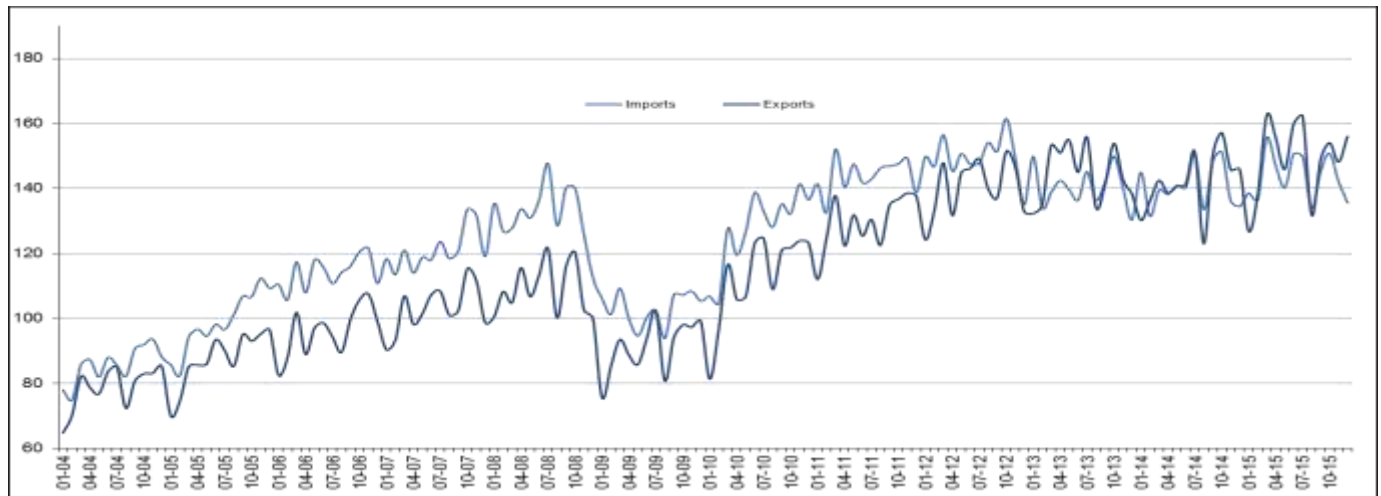
Flows	Dec 14	Dec 15	Growth	Jan-Dec 14	Jan-Dec 15	Growth
Extra-EA19 exports	162.1	167.5	3%	1 938.1	2 040.2	5%
Extra-EA19 imports	138.5	143.2	3%	1 753.8	1 794.2	2%
Extra-EA19 trade balance	23.6	24.3		184.3	246.0	
Intra-EA19 trade	127.5	130.3	2%	1 641.5	1 689.0	3%

The source dataset is available [here](#).

## European Union

The first estimate for **extra-EU28** exports of goods in December 2015 was €156.0 billion, up by 7% compared with December 2014 (€145.8 bn). Imports from the rest of the world stood at €135.5 bn, up by 1% compared with December 2014 (€134.4 bn). As a result, the **EU28** recorded a €20.5 bn surplus in trade in goods with the rest of the world in December 2015, compared with +€11.4 bn in December 2014. **Intra-EU28** trade rose to €234.7 bn in December 2015, +3% compared with December 2014.

### International trade in goods of the EU28, € bn



In 2015, **extra-EU28** exports of goods rose to €1 789.1 bn (an increase of 5% compared with 2014), while imports rose to €1 724.9 bn (an increase of 2% compared with 2014). As a result, the **EU28** recorded a surplus of €64.2 bn, compared with +€13.3 bn in 2014. **Intra-EU28** trade rose to €3 066.6 bn in 2015, +5% compared with 2014.

### EU28 trade - non seasonally adjusted data

bn €

Flows	Dec 14	Dec 15	Growth	Jan-Dec 14	Jan-Dec 15	Growth
Extra-EU28 exports	145.8	156.0	7%	1 702.1	1 789.1	5%
Extra-EU28 imports	134.4	135.5	1%	1 688.7	1 724.9	2%
Extra-EU28 trade balance	11.4	20.5		13.3	64.2	
Intra-EU28 trade	227.3	234.7	3%	2 930.7	3 066.6	5%

The source dataset is available [here](#).

### Main products - EU28

bn €

	Extra-EU28 exports			Extra-EU28 imports			Trade balance	
	Jan-Dec 14	Jan-Dec 15	Growth	Jan-Dec 14	Jan-Dec 15	Growth	Jan-Dec 14	Jan-Dec 15
<b>Total</b>	<b>1 702.1</b>	<b>1 789.1</b>	<b>5%</b>	<b>1 688.7</b>	<b>1 724.9</b>	<b>2%</b>	<b>13.3</b>	<b>64.2</b>
<b>Primary goods:</b>	<b>260.4</b>	<b>241.6</b>	<b>-7%</b>	<b>615.6</b>	<b>508.7</b>	<b>-17%</b>	<b>-355.2</b>	<b>-267.1</b>
<i>Food &amp; drink</i>	107.6	113.3	5%	98.4	108.0	10%	9.2	5.2
<i>Raw materials</i>	43.3	43.2	0%	72.8	72.1	-1%	-29.5	-28.8
<i>Energy</i>	109.5	85.1	-22%	444.3	328.6	-26%	-334.8	-243.5
<b>Manufactured goods:</b>	<b>1 374.0</b>	<b>1 469.5</b>	<b>7%</b>	<b>1 029.9</b>	<b>1 168.4</b>	<b>13%</b>	<b>344.0</b>	<b>301.1</b>
<i>Chemicals</i>	278.8	315.1	13%	165.4	184.9	12%	113.4	130.2
<i>Machinery &amp; vehicles</i>	708.6	750.9	6%	456.3	532.4	17%	252.3	218.5
<i>Other manuf'd goods</i>	386.6	403.6	4%	408.2	451.1	11%	-21.6	-47.6
<b>Other</b>	<b>67.7</b>	<b>78.0</b>	<b>15%</b>	<b>43.2</b>	<b>47.8</b>	<b>11%</b>	<b>24.5</b>	<b>30.2</b>

The source dataset is available [here](#).

### Main trading partners - EU28

bn €

	EU28 exports to			EU28 imports from			Trade balance	
	Jan-Dec 14	Jan-Dec 15	Growth	Jan-Dec 14	Jan-Dec 15	Growth	Jan-Dec 14	Jan-Dec 15
<b>United States</b>	310.9	369.5	19%	206.5	246.2	19%	104.5	123.3
<b>China</b>	164.6	170.4	4%	302.1	350.3	16%	-137.5	-179.9
<b>Switzerland</b>	140.3	150.8	8%	96.6	102.3	6%	43.7	48.5
<b>Russia</b>	103.2	73.9	-28%	182.4	135.9	-25%	-79.2	-62.0
<b>Turkey</b>	74.5	79.0	6%	54.4	61.6	13%	20.1	17.4
<b>Norway</b>	50.2	48.9	-3%	85.1	74.3	-13%	-34.9	-25.4
<b>Japan</b>	53.3	56.6	6%	56.6	59.7	6%	-3.3	-3.2
<b>South Korea</b>	43.2	47.9	11%	38.8	42.3	9%	4.4	5.6
<b>India</b>	35.5	37.9	7%	37.1	39.4	6%	-1.7	-1.5
<b>Brazil</b>	36.9	34.6	-6%	30.9	30.9	0%	6.1	3.7

The source dataset is available [here](#).

## Member States' total trade (intra-EU + extra-EU)

bn €

	Total exports						Total imports						Trade balance					
	Total		Intra-EU		Extra-EU		Total		Intra-EU		Extra-EU		Total		Intra-EU		Extra-EU	
	Jan-Dec 15	Growth / Jan-Dec 14	Jan-Dec 15	Growth / Jan-Dec 14	Jan-Dec 15	Growth / Jan-Dec 14	Jan-Dec 15	Growth / Jan-Dec 14	Jan-Dec 15	Growth / Jan-Dec 14	Jan-Dec 15	Growth / Jan-Dec 14	Jan-Dec 15	Jan-Dec 14	Jan-Dec 15	Jan-Dec 14	Jan-Dec 15	Jan-Dec 14
Belgium	358.9	1%	258.1	3%	100.7	-3%	338.2	-1%	212.1	-5%	126.1	5%	20.6	13.3	46.0	29.0	-25.4	-15.6
Bulgaria	23.2	5%	14.9	8%	8.3	0%	26.4	1%	17.0	5%	9.4	-6%	-3.3	-4.1	-2.1	-2.3	-1.1	-1.7
Czech Republic	142.6	8%	118.9	10%	23.7	1%	126.6	9%	97.6	9%	29.0	10%	15.9	15.6	21.2	18.4	-5.3	-2.8
Denmark	85.9	3%	52.6	-1%	33.3	9%	77.1	3%	53.5	3%	23.6	3%	8.8	8.7	-0.9	1.1	9.7	7.6
Germany	1 198.3	7%	693.9	7%	504.4	6%	946.4	4%	621.6	4%	324.8	4%	251.9	216.5	72.3	53.8	179.5	162.7
Estonia	11.6	-4%	8.7	0%	2.9	-14%	13.1	-5%	10.7	-5%	2.4	-6%	-1.4	-1.7	-2.0	-2.5	0.5	0.8
Ireland	108.6	21%	58.5	19%	50.0	24%	64.3	17%	43.6	15%	20.7	20%	44.3	34.5	14.9	11.3	29.3	23.1
Greece	25.8	-5%	13.9	6%	11.9	-16%	43.6	-9%	23.0	-1%	20.6	-17%	-17.8	-20.8	-9.1	-10.2	-8.8	-10.6
Spain	254.0	4%	165.1	6%	89.0	1%	278.8	3%	167.9	8%	110.9	-4%	-24.7	-25.9	-2.8	1.0	-21.9	-26.8
France	456.0	4%	268.2	2%	187.8	8%	516.1	1%	352.7	2%	163.5	-1%	-60.2	-72.4	-84.4	-82.0	24.3	9.6
Croatia	11.6	11%	7.6	16%	4.0	4%	18.4	7%	14.3	9%	4.1	1%	-6.8	-6.7	-6.7	-6.5	-0.2	-0.3
Italy	413.8	4%	227.2	4%	186.6	4%	368.6	3%	215.6	6%	152.9	0%	45.2	41.9	11.5	14.9	33.7	27.0
Cyprus	1.6	21%	0.9	11%	0.8	34%	5.0	-1%	3.7	2%	1.3	-9%	-3.4	-3.7	-2.8	-2.9	-0.5	-0.9
Latvia	10.9	-1%	7.5	1%	3.3	-4%	12.9	-3%	10.3	-4%	2.6	1%	-2.0	-2.3	-2.7	-3.2	0.7	0.9
Lithuania	23.0	-5%	14.2	6%	8.9	-19%	25.5	-2%	17.0	0%	8.5	-5%	-2.4	-1.5	-2.8	-3.6	0.4	2.1
Luxembourg	15.6	8%	13.1	10%	2.5	-2%	21.1	5%	15.3	-5%	5.8	45%	-5.5	-5.6	-2.2	-4.1	-3.3	-1.5
Hungary	88.8	7%	72.3	8%	16.6	0%	83.5	6%	63.6	7%	19.8	1%	5.4	4.3	8.6	7.2	-3.2	-2.9
Malta	2.3	5%	1.0	-5%	1.3	16%	5.2	1%	3.4	5%	1.8	-5%	-2.9	-2.9	-2.3	-2.1	-0.5	-0.8
Netherlands	511.2	1%	386.1	0%	125.1	2%	455.9	3%	208.1	2%	247.8	3%	55.4	62.7	178.0	180.9	-122.7	-118.2
Austria	137.3	2%	96.1	2%	41.2	2%	139.9	2%	107.3	2%	32.6	3%	-2.6	-2.8	-11.2	-11.5	8.6	8.6
Poland	178.7	8%	141.6	10%	37.1	-1%	173.6	3%	121.7	4%	51.9	2%	5.1	-2.7	19.9	11.0	-14.8	-13.7
Portugal	49.8	4%	36.2	6%	13.6	-3%	60.1	2%	46.0	4%	14.2	-5%	-10.3	-10.9	-9.7	-10.0	-0.6	-0.9
Romania	54.6	4%	40.2	8%	14.4	-5%	63.0	8%	48.6	10%	14.4	0%	-8.4	-6.1	-8.3	-6.8	0.0	0.8
Slovenia	28.8	6%	21.9	7%	6.9	3%	26.8	5%	18.7	6%	8.1	2%	2.0	1.5	3.2	2.7	-1.1	-1.2
Slovakia	68.1	5%	58.2	6%	9.9	-3%	66.3	7%	52.1	11%	14.1	-4%	1.9	3.4	6.1	8.0	-4.2	-4.6
Finland	53.6	-4%	31.5	-2%	22.1	-7%	54.2	-6%	39.5	0%	14.7	-20%	-0.6	-1.8	-8.0	-7.3	7.4	5.5
Sweden	126.1	2%	73.7	2%	52.4	2%	124.0	2%	86.6	3%	37.5	-2%	2.0	1.6	-12.9	-11.7	15.0	13.3
United Kingdom	415.0	9%	184.5	1%	230.5	16%	564.0	9%	302.3	10%	261.7	7%	-149.0	-139.5	-117.8	-93.3	-31.2	-46.1

The source dataset is available [here](#).

## Geographical information

The **euro area** (EA19) includes Belgium, Germany, Estonia, Ireland, Greece, Spain, France, Italy, Cyprus, Latvia, Lithuania, Luxembourg, Malta, the Netherlands, Austria, Portugal, Slovenia, Slovakia and Finland.

The **European Union** (EU28) includes Belgium, Bulgaria, the Czech Republic, Denmark, Germany, Estonia, Ireland, Greece, Spain, France, Croatia, Italy, Cyprus, Latvia, Lithuania, Luxembourg, Hungary, Malta, the Netherlands, Austria, Poland, Portugal, Romania, Slovenia, Slovakia, Finland, Sweden and the United Kingdom.

## Methods and definitions

Since the introduction of Intrastat for intra-EU trade on 1 January 1993, the value of dispatches has been consistently higher than that of arrivals. In theory, as dispatches are declared FOB and arrivals CIF, the value of arrivals should be slightly higher than that of dispatches. Eurostat uses dispatches as the more reliable measure of total intra-EU trade as, at aggregated levels, total dispatches has better coverage than total arrivals. Due to this divergence in intra-EU trade, and to the difficulties of interpreting figures in absolute terms at the level of individual Member States, trade balances for individual Member States must be interpreted with caution. The same caution applies to the trade balance of the euro area, which includes some intra-EU trade.

National concepts may differ from the harmonised methodology used by Eurostat, leading to differences between figures in this release and those published nationally, both for raw data and for seasonally adjusted series.

Products are classified according to the Standard international trade classification (SITC), Revision 4.

## Revisions and timetable

This News Release is based on data available on 10 February 2016. These are provisional figures based on information provided by Member States. They are subject to frequent revision for up to two years after the month in question.

## For more information

Eurostat's website section on international trade in goods

Eurostat's database section on international trade in goods

Eurostat's Statistics Explained article on international trade in goods statistics

Eurostat's €-indicators release calendar

Issued by: **Eurostat Press Office**

**Tim ALLEN**

**Tel: +352-4301-33 444**


**[eurostat-pressoffice@ec.europa.eu](mailto:eurostat-pressoffice@ec.europa.eu)**


For further information on data:

**Anne BERTHOMIEU-CRISTALLO**

**Tel: +352-4301-33 616**

**[estat-etfree@ec.europa.eu](mailto:estat-etfree@ec.europa.eu)**

 **Media requests:** Eurostat media support / Tel: +352-4301-33 408 / [eurostat-mediasupport@ec.europa.eu](mailto:eurostat-mediasupport@ec.europa.eu)

 [ec.europa.eu/eurostat/](http://ec.europa.eu/eurostat/)

 [@EU\\_Eurostat](https://twitter.com/EU_Eurostat)

## Annex - Seasonally adjusted data

In December 2015 compared with November 2015, **euro area** seasonally adjusted exports decreased by 0.3%, while imports increased by 0.8%. The seasonally adjusted balance was +€21.0 bn, a fall compared with November (+€22.6 bn).

### EA19 trade - seasonally adjusted data

bn €

Flows	Jan 15	Feb 15	Mar 15	Apr 15	May 15	Jun 15	Jul 15	Aug 15	Sep 15	Oct 15	Nov 15	Dec 15
Extra-EA19 exports	164.8	171.9	172.4	171.3	170.3	171.9	172.8	166.5	167.8	168.1	170.4	170.0
Extra-EA19 imports	144.2	148.8	154.8	151.6	149.2	152.5	150.3	147.2	148.0	148.3	147.9	149.0
Extra-EA19 trade balance	20.5	23.1	17.6	19.7	21.1	19.3	22.4	19.3	19.8	19.8	22.6	21.0
Intra-EA19 trade	137.1	139.2	140.2	140.6	140.3	143.9	142.6	139.7	141.0	141.0	141.9	141.8

The source dataset is available [here](#).

In December 2015 compared with November 2015, **EU28** seasonally adjusted exports rose by 3.4%, while imports fell by 0.7%. The seasonally adjusted balance was +€11.6 bn, an increase compared with November (+€5.7 bn).

### EU28 trade - seasonally adjusted data

bn €

Flows	Jan 15	Feb 15	Mar 15	Apr 15	May 15	Jun 15	Jul 15	Aug 15	Sep 15	Oct 15	Nov 15	Dec 15
Extra-EU28 exports	143.2	148.3	153.4	152.2	149.9	151.1	151.0	146.3	146.7	146.0	147.5	152.6
Extra-EU28 imports	139.9	144.0	150.4	146.2	143.5	146.8	144.5	140.3	141.5	143.0	141.9	140.9
Extra-EU28 trade balance	3.3	4.3	3.0	6.0	6.4	4.3	6.5	5.9	5.2	3.0	5.7	11.6
Intra-EU28 trade	247.6	253.3	255.5	253.7	254.7	259.8	258.0	253.7	256.5	257.1	259.5	256.5

The source dataset is available [here](#).

### Contribution of EU28 Member States to extra-EU28 trade - seasonally adjusted data

bn €

	Total exports			Total imports			Trade balance	
	Nov 15	Dec 15	Growth	Nov 15	Dec 15	Growth	Nov 15	Dec 15
<b>EU28</b>	<b>147.5</b>	<b>152.6</b>	<b>3.4%</b>	<b>141.9</b>	<b>140.9</b>	<b>-0.7%</b>	<b>5.7</b>	<b>11.6</b>
Belgium	7.9	8.4	7.1%	9.8	10.8	11.1%	-1.9	-2.4
Bulgaria	0.7	0.7	5.0%	0.8	0.7	-2.9%	-0.1	0.0
Czech Republic	2.0	1.9	-2.0%	2.5	2.5	0.6%	-0.5	-0.5
Denmark	2.8	2.9	5.6%	1.9	1.9	0.9%	0.9	1.0
Germany	41.8	41.3	-1.2%	26.9	26.4	-1.7%	14.9	14.9
Estonia	0.2	0.2	0.8%	0.2	0.2	9.1%	0.1	0.1
Ireland	4.6	4.7	2.5%	1.8	1.8	0.0%	2.8	2.9
Greece	1.0	0.9	-8.4%	1.7	1.7	2.3%	-0.6	-0.8
Spain	7.4	7.4	-0.2%	9.2	9.0	-2.0%	-1.7	-1.6
France	15.4	15.7	1.8%	13.6	13.7	0.4%	1.7	1.9
Croatia	0.3	0.3	-2.8%	0.4	0.4	-4.2%	-0.1	0.0
Italy	15.2	15.9	4.9%	12.3	12.1	-1.3%	2.9	3.8
Cyprus	0.1	0.1	-6.4%	0.1	0.1	3.2%	0.0	0.0
Latvia	0.3	0.3	-4.4%	0.2	0.2	-5.3%	0.1	0.1
Lithuania	0.8	0.8	-4.2%	0.6	0.7	20.8%	0.2	0.1
Luxembourg	0.2	0.2	-6.9%	0.4	0.4	3.0%	-0.2	-0.2
Hungary	1.4	1.4	6.5%	1.7	1.6	-2.5%	-0.3	-0.2
Malta	0.1	0.1	23.9%	0.1	0.1	-24.0%	0.0	0.0
Netherlands	10.5	10.6	1.5%	20.3	20.7	1.9%	-9.8	-10.0
Austria	3.3	3.4	3.0%	2.7	2.8	1.9%	0.6	0.7
Poland	3.0	3.2	6.8%	4.3	4.1	-4.5%	-1.3	-0.9
Portugal	1.1	1.1	5.1%	1.2	1.2	3.0%	-0.1	-0.1
Romania	1.2	1.1	-1.9%	1.1	1.1	0.5%	0.0	0.0
Slovenia	0.6	0.6	5.5%	0.7	0.7	3.1%	-0.1	-0.1
Slovakia	0.9	0.8	-6.0%	1.1	1.1	0.0%	-0.3	-0.3
Finland	1.7	1.9	8.5%	1.2	1.2	4.7%	0.6	0.7
Sweden	4.1	4.6	10.1%	3.1	3.1	0.3%	1.1	1.5
United Kingdom	19.2	21.9	14.3%	22.2	20.5	-7.9%	-3.1	1.4

The source dataset is available [here](#).

International trade in goods balance, seasonally adjusted, € bn

