

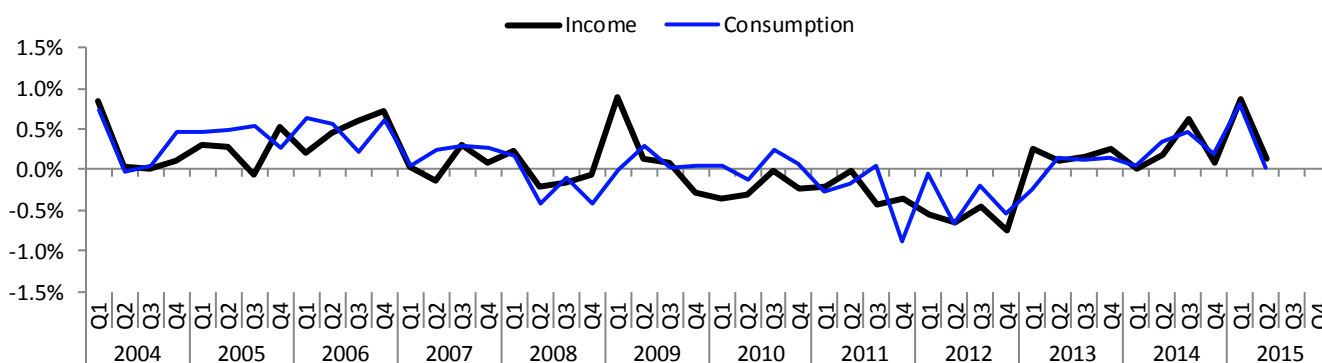
Second quarter of 2015

Household real income per capita nearly stable in both euro area and EU28

Real consumption per capita stable in euro area and nearly stable in EU28

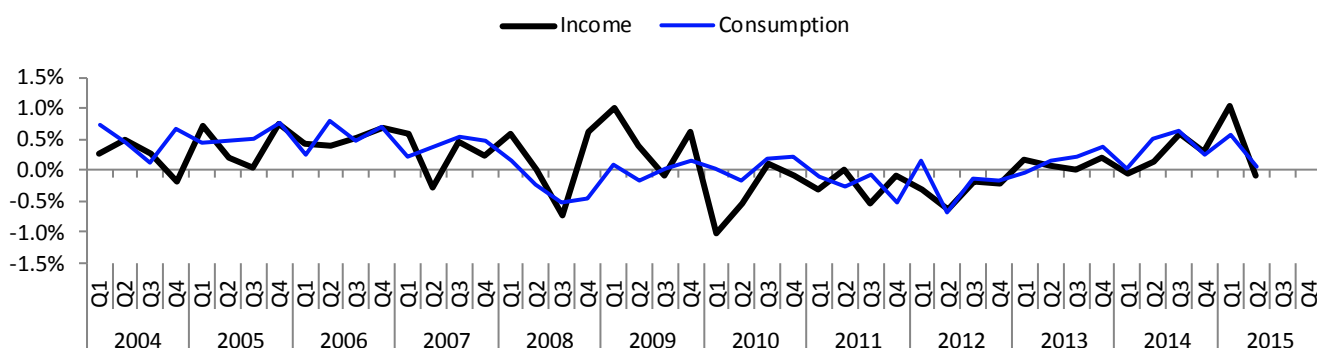
In the **euro area**, in real terms, household income per capita increased by 0.1% in the second quarter of 2015, after an increase of 0.9% in the previous quarter. Household real consumption per capita was stable in the second quarter of 2015, after an increase of 0.8% in the first quarter of 2015.

Euro area real growth of household income and consumption per capita, % (seasonally adjusted)



In the **EU28** household real income per capita decreased by 0.1% in the second quarter of 2015, after an increase of 1.1% in the previous quarter. Household real consumption per capita increased by 0.1% in the second quarter of 2015, after an increase of 0.6% in the first quarter of 2015.

EU28 real growth of household income and consumption per capita, % (seasonally adjusted)



These data come from a detailed set of seasonally adjusted quarterly European sector accounts released by **Eurostat, the statistical office of the European Union** and the **European Central Bank (ECB)**. The [dataset](#) is available on the Eurostat website, and the key indicators are also discussed in [Statistics Explained](#).

Geographical information

The **euro area** (EA19) consists of 19 Member States: Belgium, Germany, Estonia, Ireland, Greece, Spain, France, Italy, Cyprus, Latvia, Lithuania, Luxembourg, Malta, the Netherlands, Austria, Portugal, Slovenia, Slovakia and Finland, plus the European Central Bank and European Stability Mechanism.

The **European Union** (EU28) consists of 28 Member States: Belgium, Bulgaria, the Czech Republic, Denmark, Germany, Estonia, Ireland, Greece, Spain, France, Croatia, Italy, Cyprus, Latvia, Lithuania, Luxembourg, Hungary, Malta, the Netherlands, Austria, Poland, Portugal, Romania, Slovenia, Slovakia, Finland, Sweden and the United Kingdom plus the EU institutions.

Methods and definitions

Household real income per capita is defined as the adjusted gross disposable income of households, in nominal terms, divided by the total population (source: National Accounts) and by the deflator (price index) of household final consumption expenditure.

Household real consumption per capita is defined as the actual final consumption expenditure of households, in nominal terms, divided by the total population (source: National Accounts) and by the deflator (price index) of household final consumption expenditure.

The compilation of the European sector accounts follows the **European System of Accounts 2010 (ESA2010)** and covers the period from the first quarter of 1999 to the second quarter of 2015.

Institutional sectors bring together economic units with broadly similar characteristics and behaviour, namely: households (including non-profit institutions serving households), non-financial corporations, financial corporations, government and the rest of the world. In the latter, to measure the external transactions of the euro area / European Union, it is necessary to remove cross-border flows within the area concerned.

Eurostat's website includes detailed annual and quarterly sector accounts of Member States of the European Economic Area and derived key indicators published 120 days after each quarter (which also cover annual indicators such as debt-to-income ratios). A subset of quarterly key indicators is published 102 days after each quarter.

Seasonal adjustment has been performed using the Tramo-Seats method as implemented in JDemetra+ software. The seasonally adjusted series are built up indirectly as the sum of seasonally adjusted components.

Due to the conversion to euro, the growth rates of European Union aggregates may be affected by movements in exchange rates.

Revisions and time table

A first release, focussing on data for household saving and investment rates in the euro area, is published 102 days after each quarter.

Compared with News Release [134/2015](#) of 29 July 2015, the growth rate of household income per capita in real terms for the first quarter of 2015 remained unchanged for the EA19 and has been revised from +0.9% to +1.1% for the EU28. The growth rate of household consumption per capita in real terms remained unchanged for the EA19 and has been revised from +0.8% to +0.6% for the EU28.

For more information

Eurostat's [quarterly data](#) on sector accounts


Eurostat's [annual data](#) on sector accounts

Eurostat's [metadata](#) on European sector accounts compilation

Detailed data and methodology on the Eurostat's website [here](#) and on the ECB's website [here](#)

Eurostat's €-indicators [release calendar](#)

Issued by: **Eurostat Press Office**
Vincent BOURGEAIS
Tel: +352-4301-33 444
eurostat-pressoffice@ec.europa.eu


 ec.europa.eu/eurostat/

 [@EU_Eurostat](https://twitter.com/EU_Eurostat)

For further information:

Peter GAL
Filippo GREGORINI
Enrico INFANTE

Tel: +352-4301-31 914
estat-sector-query@ec.europa.eu

 **Media requests:** Eurostat media support / Tel: +352-4301-33 408 / eurostat-mediasupport@ec.europa.eu

Household adjusted gross disposable income and consumption

(seasonally adjusted, percentage change compared with the previous quarter)

		Euro area (EA19)							European Union (EU28)				
		Contribution of the components to nominal growth of adjusted gross disposable income						Nominal growth of the adjusted gross disposable income per capita	Real growth of the adjusted gross disposable income per capita	Real growth of actual final consumption per capita	Nominal growth of the adjusted gross disposable income per capita	Real growth of the adjusted gross disposable income per capita	Real growth of actual final consumption per capita
		Wages (received)	Gross operating surplus and mixed income	Net property income and other current transfers	Social benefits	Taxes	Social transfers in kind						
2004	Q1	0.3	0.2	0.3	0.3	0.2	0.1	1.3	0.9	0.7	1.2	0.3	0.7
	Q2	0.3	0.3	0.1	0.1	-0.1	0.2	0.8	0.0	0.0	1.7	0.5	0.5
	Q3	0.1	0.1	0.1	0.1	0.1	0.1	0.5	0.0	0.0	0.7	0.3	0.1
	Q4	0.3	0.2	0.3	0.1	-0.2	0.2	0.6	0.1	0.5	-0.1	-0.2	0.7
2005	Q1	0.4	0.1	0.0	0.2	-0.2	0.2	0.7	0.3	0.5	1.3	0.7	0.4
	Q2	0.3	0.2	0.2	0.3	0.0	0.2	0.9	0.3	0.5	1.2	0.2	0.5
	Q3	0.4	0.1	0.3	0.1	-0.3	0.2	0.7	-0.1	0.5	0.7	0.0	0.5
	Q4	0.5	0.1	0.0	0.1	0.0	0.3	1.0	0.5	0.3	1.3	0.8	0.8
2006	Q1	0.2	0.5	0.2	0.3	-0.5	0.2	0.8	0.2	0.6	0.9	0.4	0.3
	Q2	0.7	0.2	0.2	0.2	-0.1	0.2	1.2	0.5	0.6	1.0	0.4	0.8
	Q3	0.4	0.4	0.2	0.1	0.0	0.2	1.1	0.6	0.2	1.3	0.5	0.5
	Q4	0.6	0.3	0.2	0.2	-0.3	0.1	1.0	0.7	0.6	1.5	0.7	0.7
2007	Q1	0.5	0.1	0.2	0.1	-0.1	0.2	0.7	0.0	0.0	1.2	0.6	0.2
	Q2	0.4	0.3	0.1	0.3	-0.4	0.1	0.7	-0.1	0.2	0.5	-0.3	0.4
	Q3	0.5	0.3	0.1	0.2	-0.3	0.2	0.8	0.3	0.3	0.9	0.5	0.5
	Q4	0.5	0.2	0.2	0.4	-0.2	0.2	1.1	0.1	0.3	0.5	0.2	0.5
2008	Q1	0.6	0.2	0.1	0.1	-0.1	0.2	0.9	0.2	0.2	0.1	0.6	0.2
	Q2	0.2	0.1	0.1	0.2	-0.1	0.3	0.7	-0.2	-0.4	0.4	0.0	-0.2
	Q3	0.3	-0.1	-0.1	0.4	-0.1	0.2	0.4	-0.2	-0.1	0.2	-0.7	-0.5
	Q4	-0.2	-0.5	-0.2	0.2	0.0	0.2	-0.6	-0.1	-0.4	-1.1	0.6	-0.5
2009	Q1	-0.4	-0.9	0.0	0.7	0.3	0.2	-0.1	0.9	0.0	-2.1	1.0	0.1
	Q2	-0.1	0.0	-0.6	0.5	0.3	0.2	0.2	0.1	0.3	1.2	0.4	-0.2
	Q3	0.1	0.0	-0.3	0.3	0.0	0.2	0.2	0.1	0.0	0.6	-0.1	0.0
	Q4	0.2	0.0	-0.1	0.0	0.0	0.1	0.1	-0.3	0.0	0.6	0.6	0.1
2010	Q1	0.0	0.0	-0.2	0.2	-0.1	0.1	0.0	-0.4	0.0	0.2	-1.0	0.0
	Q2	0.2	0.1	0.0	0.1	-0.1	0.1	0.3	-0.3	-0.1	0.8	-0.5	-0.2
	Q3	0.2	0.2	0.0	0.1	0.0	0.0	0.4	0.0	0.2	1.0	0.1	0.2
	Q4	0.3	0.2	0.0	0.1	-0.2	0.0	0.3	-0.2	0.1	0.2	-0.1	0.2
2011	Q1	0.2	0.3	0.0	0.1	-0.2	0.0	0.5	-0.2	-0.3	0.7	-0.3	-0.1
	Q2	0.3	0.2	0.2	0.1	0.0	0.0	0.7	0.0	-0.2	0.1	0.0	-0.3
	Q3	-0.1	-0.1	0.1	0.1	-0.2	0.0	-0.1	-0.4	0.1	-0.2	-0.5	-0.1
	Q4	0.1	0.0	0.0	0.3	0.0	0.0	0.3	-0.4	-0.9	0.7	-0.1	-0.5
2012	Q1	0.0	-0.2	0.2	0.1	-0.2	0.0	-0.1	-0.5	0.0	0.8	-0.3	0.2
	Q2	0.0	0.0	-0.1	0.1	-0.2	0.0	-0.3	-0.7	-0.7	0.3	-0.6	-0.7
	Q3	0.0	0.1	-0.1	0.1	-0.2	0.0	-0.2	-0.5	-0.2	0.7	-0.2	-0.1
	Q4	-0.2	0.1	-0.1	0.2	-0.1	0.0	-0.2	-0.7	-0.5	0.0	-0.2	-0.2
2013	Q1	0.1	0.0	0.1	0.2	0.0	0.1	0.5	0.3	-0.3	-0.5	0.2	0.0
	Q2	0.1	0.1	0.0	0.1	-0.2	0.1	0.2	0.1	0.1	0.2	0.1	0.2
	Q3	0.2	0.1	0.1	0.0	-0.1	0.1	0.4	0.2	0.1	0.2	0.0	0.2
	Q4	0.3	0.0	0.0	0.1	0.0	0.1	0.4	0.3	0.2	0.7	0.2	0.4
2014	Q1	0.1	0.1	-0.1	0.1	-0.1	0.1	0.1	0.0	0.0	0.2	-0.1	0.0
	Q2	0.2	0.0	-0.1	0.2	-0.1	0.1	0.2	0.2	0.3	0.5	0.2	0.5
	Q3	0.3	0.1	0.1	0.2	-0.1	0.1	0.7	0.6	0.5	1.1	0.6	0.6
	Q4	0.2	0.0	0.0	0.1	-0.1	0.1	0.2	0.1	0.2	0.5	0.3	0.2
2015	Q1	0.4	0.2	0.1	0.1	-0.3	0.1	0.6	0.9	0.8	1.8	1.1	0.6
	Q2	0.4	0.1	0.2	0.1	-0.1	0.1	0.7	0.1	0.0	1.1	-0.1	0.1

The source dataset is available [here](#). Please note that the data in the table are independently rounded to the nearest 0.1.