

106/2015 - 16 June 2015

## First quarter of 2015 compared with the fourth quarter of 2014 Employment up by 0.1% in euro area and by 0.3% in the EU28

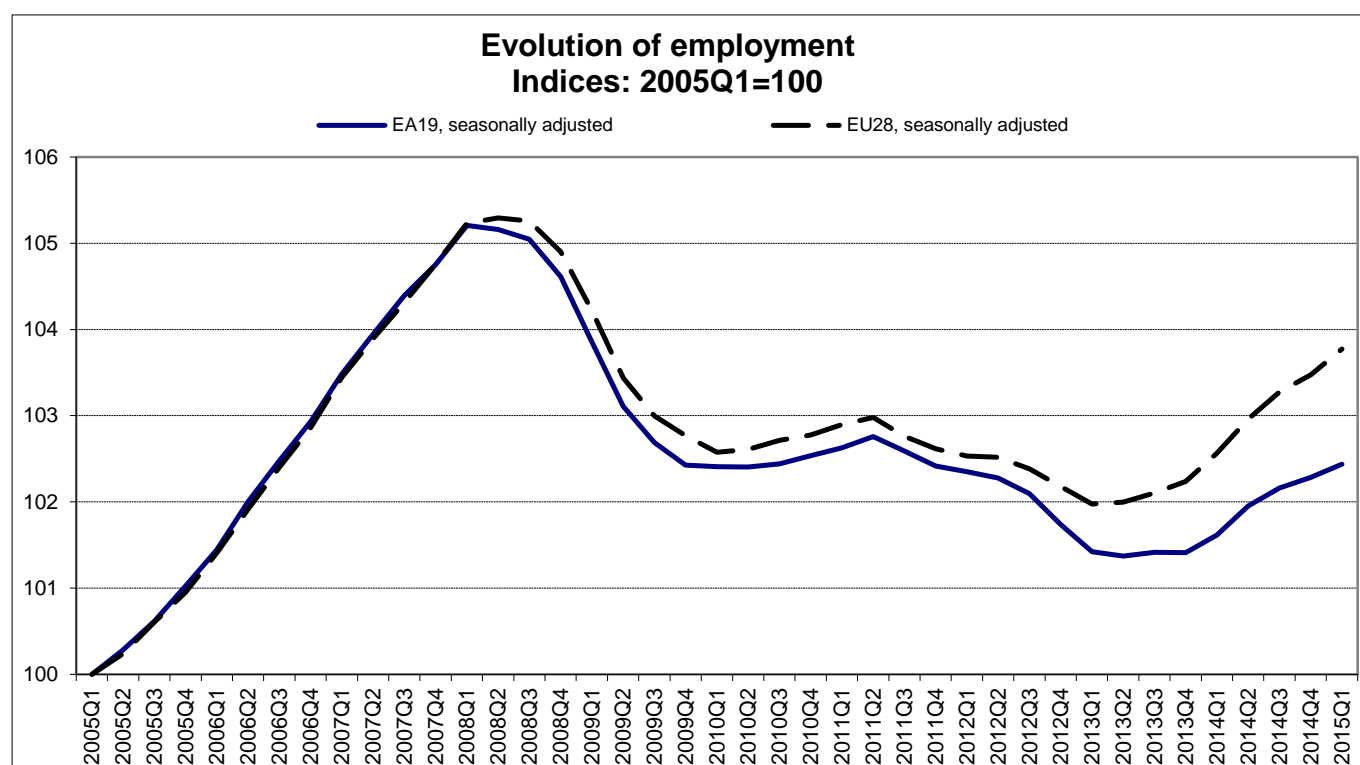
+0.8% and +1.1% respectively compared with the first quarter of 2014

The number of persons employed<sup>1</sup> increased by 0.1% in the **euro area**<sup>2</sup> (EA19) and by 0.3% in the **EU28**<sup>2</sup> in the first quarter of 2015 compared with the previous quarter, according to national accounts estimates published by **Eurostat, the statistical office of the European Union**. In the fourth quarter of 2014, employment increased by 0.1% in the euro area and 0.2% in the EU28. These figures are seasonally adjusted.

Compared with the same quarter of the previous year, employment increased by 0.8% in the **euro area** and by 1.1% in the **EU28** in the first quarter of 2015 (after +0.9% and +1.1% respectively in the fourth quarter of 2014).

Eurostat estimates that, in the first quarter of 2015, 228.1 million men and women were employed in the **EU28**, of which 150.3 million were in the **euro area**. These figures are seasonally adjusted.

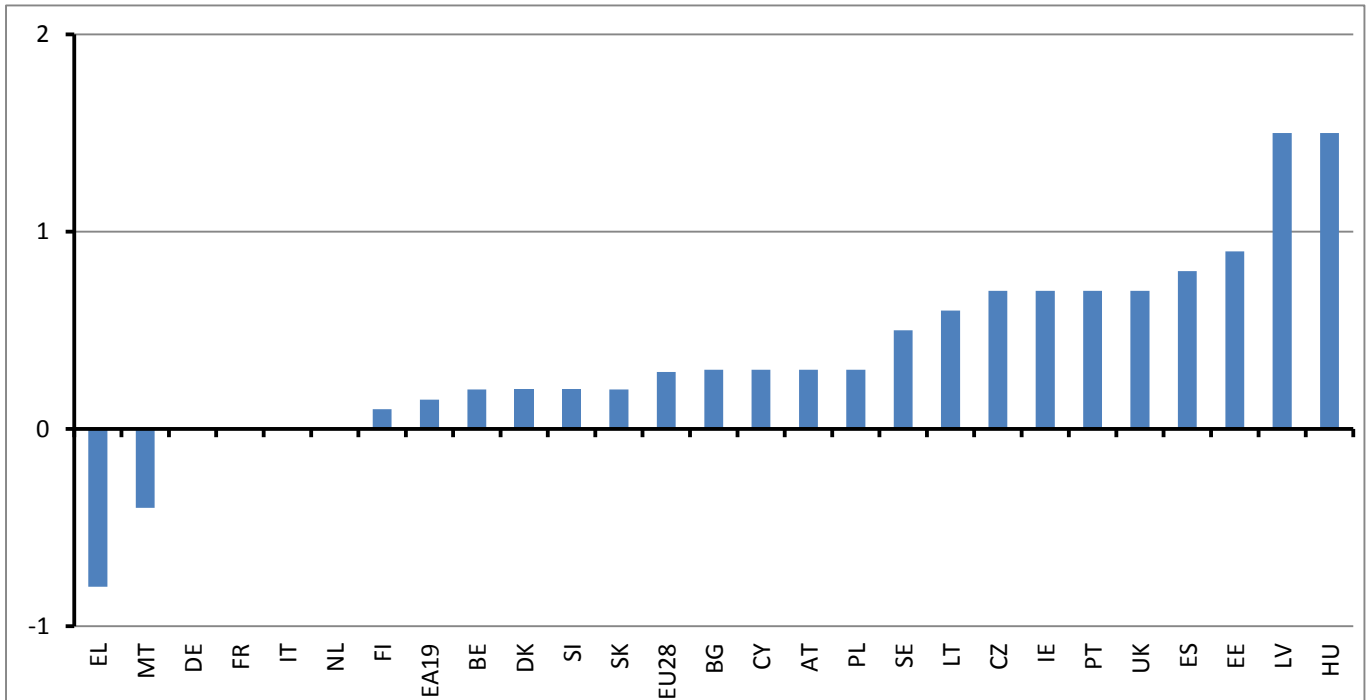
These quarterly data on employment provide a picture of labour input consistent with the output and income measure of national accounts.



## Employment growth in Member States

Among Member States for which data are available, **Latvia** and **Hungary** (+1.5%) recorded the highest increases in the first quarter of 2015 compared with the previous quarter, followed by **Estonia** (+0.9%), **Spain** (+0.8%), the **Czech Republic**, **Ireland**, **Portugal** and the **United Kingdom** (all +0.7%). **Greece** (-0.8%) and **Malta** (-0.4%) recorded decreases, while employment was stable in **Germany**, **France**, **Italy** and the **Netherlands**.

**Member States' growth rates for employment in the first quarter of 2015**  
% change over the previous quarter, seasonally adjusted



1. Employment covers employees and self-employed working in resident production units (i.e. the domestic employment concept). Unless otherwise stated, all employment estimates in this release use *persons* as the measurement unit. ESA2010 acknowledges other possible measures for employment: jobs and total hours worked. More information on employment in national accounts is available on Eurostat's website:  
<http://ec.europa.eu/eurostat/web/national-accounts/methodology/employment>.
2. The euro area (EA19) includes Belgium, Germany, Estonia, Ireland, Greece, Spain, France, Italy, Cyprus, Latvia, Lithuania, Luxembourg, Malta, the Netherlands, Austria, Portugal, Slovenia, Slovakia and Finland.  
The European Union (EU28) includes Belgium, Bulgaria, the Czech Republic, Denmark, Germany, Estonia, Ireland, Greece, Spain, France, Croatia, Italy, Cyprus, Latvia, Lithuania, Luxembourg, Hungary, Malta, the Netherlands, Austria, Poland, Portugal, Romania, Slovenia, Slovakia, Finland, Sweden and the United Kingdom.

Issued by: **Eurostat Press Office**

**Tim ALLEN**  
Tel: +352-4301-33444  
[eurostat-pressoffice@ec.europa.eu](mailto:eurostat-pressoffice@ec.europa.eu)


[ec.europa.eu/eurostat/](http://ec.europa.eu/eurostat/)

[@EU\\_Eurostat](https://twitter.com/EU_Eurostat)

For further information on data:

**Jenny RUNESSON**  
Tel: +352-4301- 36130  
[estat-gdp-query@ec.europa.eu](mailto:estat-gdp-query@ec.europa.eu)

**Christine GERSTBERGER**  
Tel: +352-4301-30175  
[estat-gdp-query@ec.europa.eu](mailto:estat-gdp-query@ec.europa.eu)

 **Media requests:** Eurostat media support / Tel: +352-4301-33408 / [eurostat-mediasupport@ec.europa.eu](mailto:eurostat-mediasupport@ec.europa.eu)

### Employment growth rates\*

	Percentage change compared with the previous quarter				Percentage change compared with the same quarter of the previous year			
	2014			2015	2014			2015
	Q2	Q3	Q4	Q1	Q2	Q3	Q4	Q1
<b>EA19</b>	0.3	0.2	0.1	<b>0.1</b>	0.6	0.7	0.9	<b>0.8</b>
<b>EU28</b>	0.4	0.3	0.2	<b>0.3</b>	0.9	1.1	1.1	<b>1.1</b>
Member States								
<b>Belgium</b>	0.2	0.1	0.1	<b>0.2</b>	0.5	0.5	0.5	<b>0.6</b>
<b>Bulgaria</b>	0.0	0.2	0.0	<b>0.3</b>	0.3	0.7	0.1	<b>0.8</b>
<b>Czech Republic</b>	-0.2	0.2	0.4	<b>0.7</b>	-0.1	0.5	0.8	<b>1.1</b>
<b>Denmark</b>	0.3	0.1	0.3	<b>0.2</b>	0.7	0.6	0.8	<b>0.8</b>
<b>Germany</b>	0.3	0.1	0.2	<b>0.0</b>	0.9	0.8	0.9	<b>0.7</b>
<b>Estonia</b>	2.4	-0.2	0.5	<b>0.9</b>	-0.2	1.3	3.1	<b>3.6</b>
<b>Ireland</b>	0.3	0.6	0.7	<b>0.7</b>	1.7	1.4	1.6	<b>2.3</b>
<b>Greece</b>	-0.1	1.6	0.0	<b>-0.8</b>	-0.5	1.5	2.4	<b>0.7</b>
<b>Spain</b>	0.9	0.4	0.7	<b>0.8</b>	1.2	1.7	2.4	<b>2.9</b>
<b>France</b>	0.1	0.0	-0.1	<b>0.0</b>	0.3	0.3	0.1	<b>0.0</b>
<b>Croatia</b>	1.0	1.1	-0.9	:	1.6	4.9	1.6	<b>2.8</b>
<b>Italy</b>	0.2	0.1	0.0	<b>0.0</b>	-0.1	0.4	0.4	<b>0.3</b>
<b>Cyprus</b>	0.1	-0.2	-0.3	<b>0.3</b>	-1.4	-0.8	-1.5	<b>0.0</b>
<b>Latvia</b>	-0.6	-1.6	0.7	<b>1.5</b>	-1.3	-3.0	-1.2	<b>0.0</b>
<b>Lithuania</b>	-1.1	1.6	0.2	<b>0.6</b>	0.9	3.0	1.9	<b>1.7</b>
<b>Luxembourg</b>	1.1	0.1	0.8	:	2.3	2.4	2.5	:
<b>Hungary</b>	0.7	0.8	0.2	<b>1.5</b>	3.2	3.5	2.4	<b>3.4</b>
<b>Malta</b>	1.7	1.0	0.3	<b>-0.4</b>	5.0	4.5	4.2	<b>2.7</b>
<b>Netherlands</b>	0.1	0.1	0.4	<b>0.0</b>	-0.4	-0.3	0.6	<b>0.6</b>
<b>Austria</b>	0.2	0.0	0.2	<b>0.3</b>	1.0	0.6	0.5	<b>0.7</b>
<b>Poland</b>	0.6	0.6	-0.1	<b>0.3</b>	1.6	1.9	1.6	<b>1.6</b>
<b>Portugal</b>	0.8	1.0	-1.0	<b>0.7</b>	1.6	1.9	0.7	<b>1.4</b>
<b>Romania</b>	:	:	:	:	0.4	1.5	0.8	<b>1.0</b>
<b>Slovenia</b>	0.2	0.2	0.3	<b>0.2</b>	0.7	0.8	0.8	<b>1.0</b>
<b>Slovakia</b>	0.6	0.3	0.6	<b>0.2</b>	1.4	1.4	2.1	<b>1.8</b>
<b>Finland</b>	0.5	-0.8	0.1	<b>0.1</b>	-0.3	-0.2	-0.2	<b>0.0</b>
<b>Sweden</b>	0.5	0.7	0.2	<b>0.5</b>	1.3	1.9	1.5	<b>1.8</b>
<b>United Kingdom</b>	0.5	0.4	0.3	<b>0.7</b>	2.5	2.3	2.0	<b>1.9</b>
EFTA countries								
<b>Norway</b>	0.3	0.3	0.2	:	1.3	1.0	1.0	:

: Data not available.

\* Percentage change in the number of persons employed in resident production units compared with the previous quarter based on seasonally adjusted data. Percentage change compared with the same quarter of the previous year based on non-seasonally adjusted data.

## T1a TOTAL EMPLOYMENT AND EMPLOYMENT BY INDUSTRY

t/t-1 PERCENTAGE CHANGE OVER THE PREVIOUS QUARTER – SEASONALLY ADJUSTED

NACE Rev 2	Total economy				Agriculture, forestry and fishing				Industry (mining, manufacturing, electricity, water and waste)				of which: Manufacturing				Construction				Trade, transport, accommodation and food service activities			
Section					A				B, C, D and E				C				F				G, H and I			
	2014			2015	2014			2015	2014			2015	2014			2015	2014			2015	2014			2015
	Q2	Q3	Q4	Q1	Q2	Q3	Q4	Q1	Q2	Q3	Q4	Q1	Q2	Q3	Q4	Q1	Q2	Q3	Q4	Q1	Q2	Q3	Q4	Q1
EA19	0.3	0.2	0.1	<b>0.1</b>	0.1	0.1	-0.1	<b>0.0</b>	0.3	-0.1	0.1	<b>0.1</b>	0.3	-0.1	0.2	<b>0.1</b>	-0.2	0.2	-0.6	<b>0.5</b>	0.6	0.3	0.0	<b>0.2</b>
EU28	0.4	0.3	0.2	<b>0.3</b>	-0.1	-0.1	-0.5	<b>-0.1</b>	0.3	0.0	0.1	<b>0.4</b>	0.3	0.0	0.2	<b>0.3</b>	-0.1	0.2	-0.1	<b>0.5</b>	0.6	0.4	0.2	<b>0.2</b>

## T1b TOTAL EMPLOYMENT AND EMPLOYMENT BY INDUSTRY

t/t-1 PERCENTAGE CHANGE OVER THE PREVIOUS QUARTER – SEASONALLY ADJUSTED

NACE Rev 2	Information and communication				Financial and insurance activities				Real estate activities				Professional and support service activities				Administration and other public services				Arts, entertainment and other services			
Section	J				K				L				M and N				O, P and Q				R, S, T and U			
	2014			2015	2014			2015	2014			2015	2014			2015	2014			2015	2014			2015
	Q2	Q3	Q4	Q1	Q2	Q3	Q4	Q1	Q2	Q3	Q4	Q1	Q2	Q3	Q4	Q1	Q2	Q3	Q4	Q1	Q2	Q3	Q4	Q1
EA19	0.2	0.4	0.2	<b>0.3</b>	-0.5	-0.1	0.1	<b>-0.3</b>	-0.2	0.8	0.0	<b>0.9</b>	0.8	0.5	0.6	<b>0.5</b>	0.1	0.1	0.1	<b>0.1</b>	0.5	0.3	0.2	<b>-0.7</b>
EU28	0.6	0.9	0.4	<b>1.6</b>	-0.3	0.3	0.0	<b>-0.2</b>	-0.5	0.4	0.4	<b>-1.2</b>	1.1	0.7	0.7	<b>0.1</b>	0.1	0.2	0.2	<b>0.5</b>	0.7	0.3	0.3	<b>0.2</b>

## T2a TOTAL EMPLOYMENT AND EMPLOYMENT BY INDUSTRY

t/t-4 PERCENTAGE CHANGE OVER THE SAME QUARTER OF THE PREVIOUS YEAR – NON-SEASONALLY ADJUSTED

NACE Rev 2	Total economy				Agriculture, forestry and fishing				Industry (mining, manufacturing, electricity, water and waste)				of which: Manufacturing				Construction				Trade, transport, accommodation and food service activities			
Section					A				B, C, D and E				C				F				G, H and I			
	2014			2015	2014			2015	2014			2015	2014			2015	2014			2015	2014			2015
	Q2	Q3	Q4	Q1	Q2	Q3	Q4	Q1	Q2	Q3	Q4	Q1	Q2	Q3	Q4	Q1	Q2	Q3	Q4	Q1	Q2	Q3	Q4	Q1
EA19	0.6	0.7	0.9	<b>0.8</b>	0.7	0.4	0.7	<b>0.2</b>	-0.1	0.1	0.4	<b>0.4</b>	0.0	0.1	0.4	<b>0.4</b>	-1.9	-1.3	-1.6	<b>0.0</b>	0.8	1.1	0.9	<b>1.1</b>
EU28	0.9	1.1	1.1	<b>1.1</b>	-0.6	0.4	0.3	<b>-0.1</b>	0.4	0.5	0.7	<b>0.9</b>	0.5	0.5	0.7	<b>0.7</b>	-0.8	-0.6	-0.9	<b>0.3</b>	1.2	1.5	1.2	<b>1.2</b>

## T2b TOTAL EMPLOYMENT AND EMPLOYMENT BY INDUSTRY

t/t-4 PERCENTAGE CHANGE OVER THE SAME QUARTER OF THE PREVIOUS YEAR – NON-SEASONALLY ADJUSTED

NACE Rev 2	Information and communication				Financial and insurance activities				Real estate activities				Professional and support service activities				Administration and other public services				Arts, entertainment and other services			
Section	J				K				L				M and N				O, P and Q				R, S, T and U			
	2014			2015	2014			2015	2014			2015	2014			2015	2014			2015	2014			2015
	Q2	Q3	Q4	Q1	Q2	Q3	Q4	Q1	Q2	Q3	Q4	Q1	Q2	Q3	Q4	Q1	Q2	Q3	Q4	Q1	Q2	Q3	Q4	Q1
EA19	0.9	1.4	1.4	<b>1.2</b>	-1.2	-0.8	-0.8	<b>-0.8</b>	0.9	0.2	0.8	<b>1.7</b>	2.1	2.1	2.6	<b>2.4</b>	0.7	0.7	0.7	<b>0.5</b>	0.4	0.6	1.6	<b>0.3</b>
EU28	1.7	2.3	2.7	<b>3.7</b>	-1.4	-0.6	-0.9	<b>-0.5</b>	2.4	1.8	1.9	<b>-0.8</b>	2.9	3.1	3.2	<b>2.5</b>	0.8	0.8	0.8	<b>0.9</b>	1.5	1.5	1.7	<b>1.3</b>