

## FLASH REPORT ON RECYCLING RESULTS IN THE EU

The sustainable management of resources is a cornerstone of sustainable development. Current patterns of resource use, production, consumption and waste disposal are placing increasing pressure on the environment. This is increasing greenhouse gas emissions and contributing to air, water and soil pollution. Improved resource efficiency makes good business sense and contributes to significant energy savings (95% in the case of aluminium). Improved recycling can also supply essential materials to European industry with much lower environmental impacts than extraction of raw materials.

EU legislation on waste sets a number of targets for re-use, recycling and recovery for different waste streams including end-of-life vehicles (ELV), packaging and waste electrical and electronic equipment (WEEE). These targets aim to make the best use of resources contained in waste and to minimise the environmental and human health impacts associated with waste management. Collectively, they contribute substantially to improving overall resource efficiency. Each year (or second year in the case of electrical and electronic equipment), the Commission receives data on the national reuse, recycling and recovery figures for these waste streams.

The achievement of the targets set for packaging waste has gradually improved in recent years, and a continued increase in both recycling and recovery rates has been observed since 1997. However, the newly reported treatment rates for waste vehicles and electronics show much scope for improvement. Overall, the EU15 countries with well established waste management systems perform better than the new Member States which still need to build the necessary waste management infrastructure and enhance their waste collection and recovery rates. Not meeting the targets accounts for the loss of valuable resources and more landfilling and is against the principles of EU waste legislation.

The Commission is closely monitoring the situation. Particular attention will be given to next year's reports on End-of-Life Vehicles and Waste Electrical and Electronic Equipment. If there is no evidence of improvement, the Commission may decide to take steps against the non-complying Member States. The Commission has contacted the Member States which have failed to reach the prescribed targets in 2006. Only half of the Member States concerned have provided explanations. In most cases, the targets missed in 2006 were met in the following year. Further steps need to be taken in those Member States which did not provide a sufficient justification for failure and missed the targets in 2007. The Commission has also taken steps against the Member States which failed to report their figures.

Summary of the situation for each waste stream:

### PACKAGING

The Packaging Directive<sup>1</sup> sets two types of targets that need to be achieved by Member States: for overall recycling or recovery and for the recycling of specific waste streams. By the end of 2008, Member States had to meet more ambitious recycling and recovery rates, including material-specific recycling levels:

TARGET	To be reached no later than 30 June 2001	To be reached no later than 31 December 2008
recovery of packaging waste	min 50%, max 65%	min 60%
recycling of packaging waste	min 25%, max 45%	min 55%, max 80%
glass	min 15%	min 60%
paper and board	min 15%	min 60%
metals	min 15%	min 50%

<sup>1</sup> Directive 94/62/EC on packaging and packaging waste, OJ L 365, 31.12.1994, p.10.

plastics	min 15%	min 22.5%
wood	min 15%	min 15%

- In 2006 and 2007, a vast majority of Member States met the Packaging Directive targets
- Data have not been provided by Malta (2007) and Slovenia (2007)
- In 2006, Malta did not meet 5 of the 6 recycling targets
- Several new Member States missed certain targets, but the 2007 figures show a tendency for improvement in most of the reporting Member States on the previous year. Three Member States reported missing one of the targets two years in a row (Greece for plastic, Cyprus for glass and the minimum recovery rate). Overall, the following targets were not met:
  - **glass recycling target** missed by Romania in 2006 and by Cyprus in 2006 and 2007
  - **plastics recycling target** missed by Greece in 2006 and 2007 and by Cyprus in 2007
  - **minimum recovery rate for total packaging waste** missed by Bulgaria in 2006, Cyprus in 2006 and 2007, and Latvia and Lithuania in 2007
- Some countries, although compliant with the targets, show a decrease in their recycling and /or recovery rates or of the recycling rates of certain materials between 2006 and 2007. These include:
  - **decrease in recovery rate:** Latvia, Luxembourg
  - **decrease in recycling rate:** Hungary, Spain, Luxembourg, Austria
  - **decrease in glass recycling rate:** Portugal, Czech Republic, Greece, Luxembourg
  - **decrease in plastic recycling rate:** Portugal, Romania, Sweden, Cyprus, Latvia, Hungary
  - **decrease in paper and board recycling rate:** Denmark, Spain, Cyprus, Latvia, Luxembourg, Hungary
  - **decrease in metals recycling rate:** Romania, Estonia, France, Poland
- These figures, however, do not affect the overall increase in both recycling and recovery rates for packaging waste (see graph 1).
- In certain Member States such as Luxembourg, Austria and Sweden the decrease does not affect their compliance with the directive as their recycling and recovery rates in some cases surpass the targets set for 2008. However, this could prove to be a dangerous trend for the new Member States that missed one of the targets in 2007. Further close monitoring of the annual recycling and recovery rates is therefore necessary.

## END-OF-LIFE VEHICLES

All end-of-life vehicles have to be collected, cleaned up and subsequently reused, recycled or recovered to the levels prescribed in the End-of-Life Vehicle Directive<sup>2</sup>. From 1 January 2015 targets for re-use, recycling and recovery rates will be increased. Today, lower targets apply:

TARGET	By 1 January 2006	By 1 January 2015
Re-use and recycling	80%	85%
Re-use and recovery	85%	95%

- 24 Member States reported data on end-of life vehicles for 2007, but not all obligatory data have been provided. For 2006, Malta and Ireland have not reported their re-use, recycling and recovery data. Some 22 countries submitted a description of the data, but not all countries referred to the methodology used to report or the methodological guidance provided by the Commission in May 2009. As a result, the quality of data is in many cases unreliable and needs verification.

<sup>2</sup> Directive 2000/53/EC on end-of-life vehicles, OJ L 269, 21.10.2000, p.34.

- The **80% re-use and recycling target** was met by 19 out of 27 Member States in 2006 and 21 in 2007. Member States not meeting the target in 2007 were: the Czech Republic, France, and Poland, while for Italy, Malta and Slovenia data was either missing or incomplete. An increase in re-use and recycling rates was observed in 14 Member States, 2 maintained stable re-use and recycling rates and 8 saw a decrease in their re-use and recycling levels.
- The **85% recovery target** was met by only 12 out of 27 Member States in 2006 and by 14 in 2007. Between 2006 and 2007, the re-use and recovery rate increased in 14 Member States, remained stable in 3 and decreased in 7 (data for Italy, Malta and Slovenia were missing or incomplete).

### **Waste Electrical and Electronic Equipment (WEEE)**

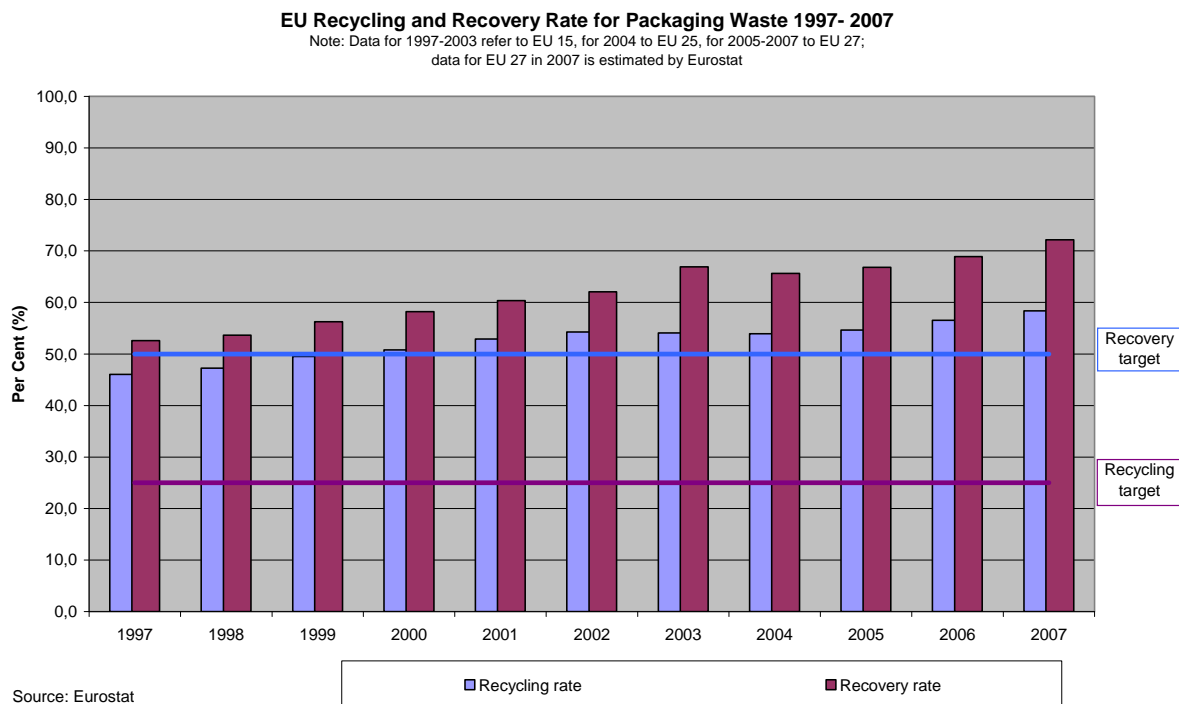
The targets for the collection and recovery of waste electrical and electronic equipment had to be met by 31 December 2006 for the EU15, 31 December 2007 for Slovenia, and 31 December 2008 for the other new Member States. By the end of 2006, 8 out of 15 Member States bound by the collection target had already met it. Only 6 out of 15 Member States met all the applicable WEEE recycling targets in 2006. The data show that a majority of Member States will have to take steps to ensure that the prescribed targets are met on time. The 2007 and 2008 data will be reported in mid-2010 when it will be possible to see a trend in WEEE collection and recycling rates.

- **Collection target of 4 kg per capita** was met by 8 Member States (2 Member States did not report).
- **All 10 applicable recycling targets** have already been met by 5 Member States (Denmark, Germany, Luxembourg, the Netherlands, Austria and Slovakia).
- **All 9 applicable recovery targets** have already been met by 5 Member States (Denmark, Luxembourg, the Netherlands, Austria and Slovakia).
- The **UK and Ireland** did not report on the targets.

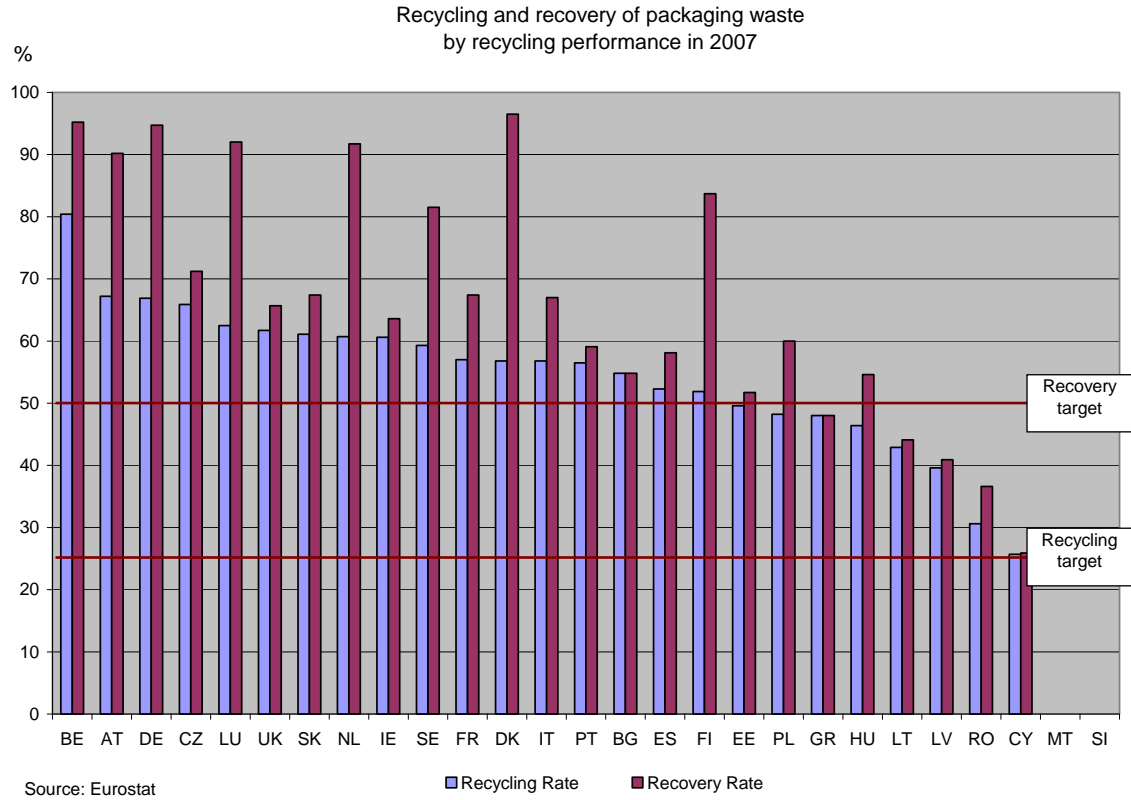
## Graphs and figures

### Packaging waste

**Figure 1:**

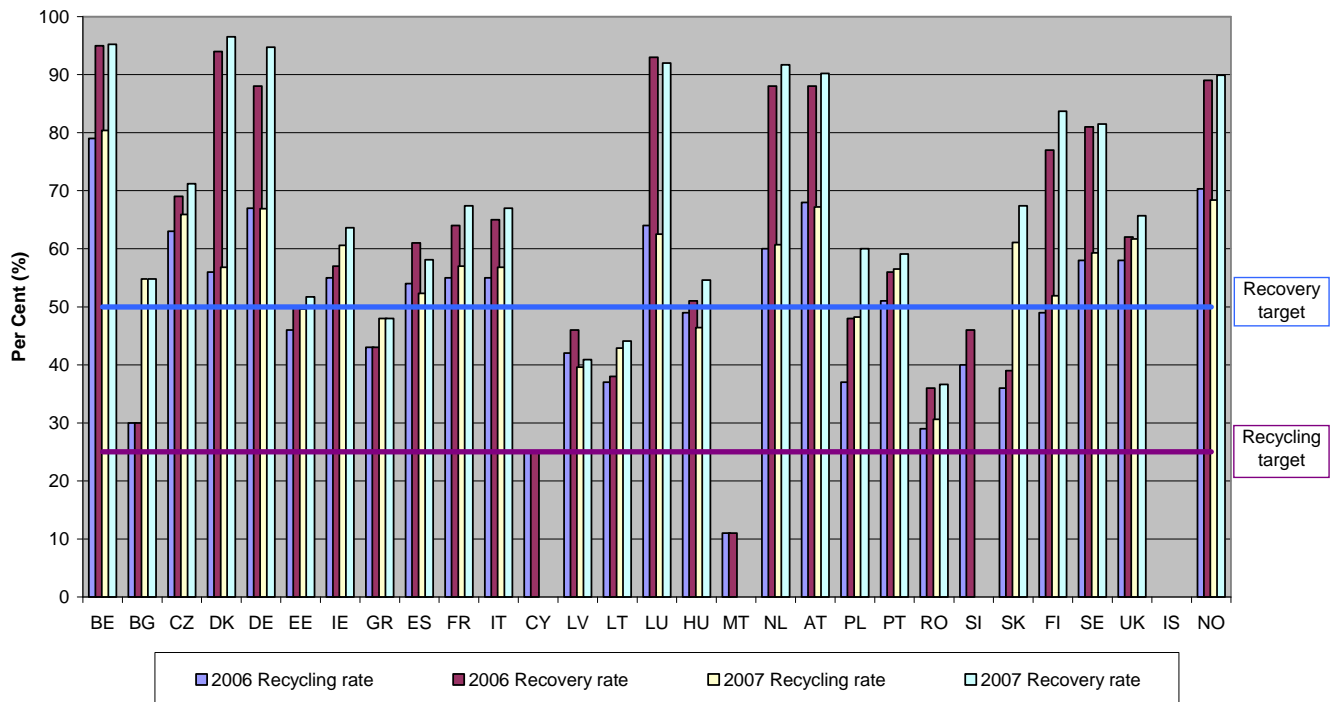


**Figure 2:**



**Figure 3:**

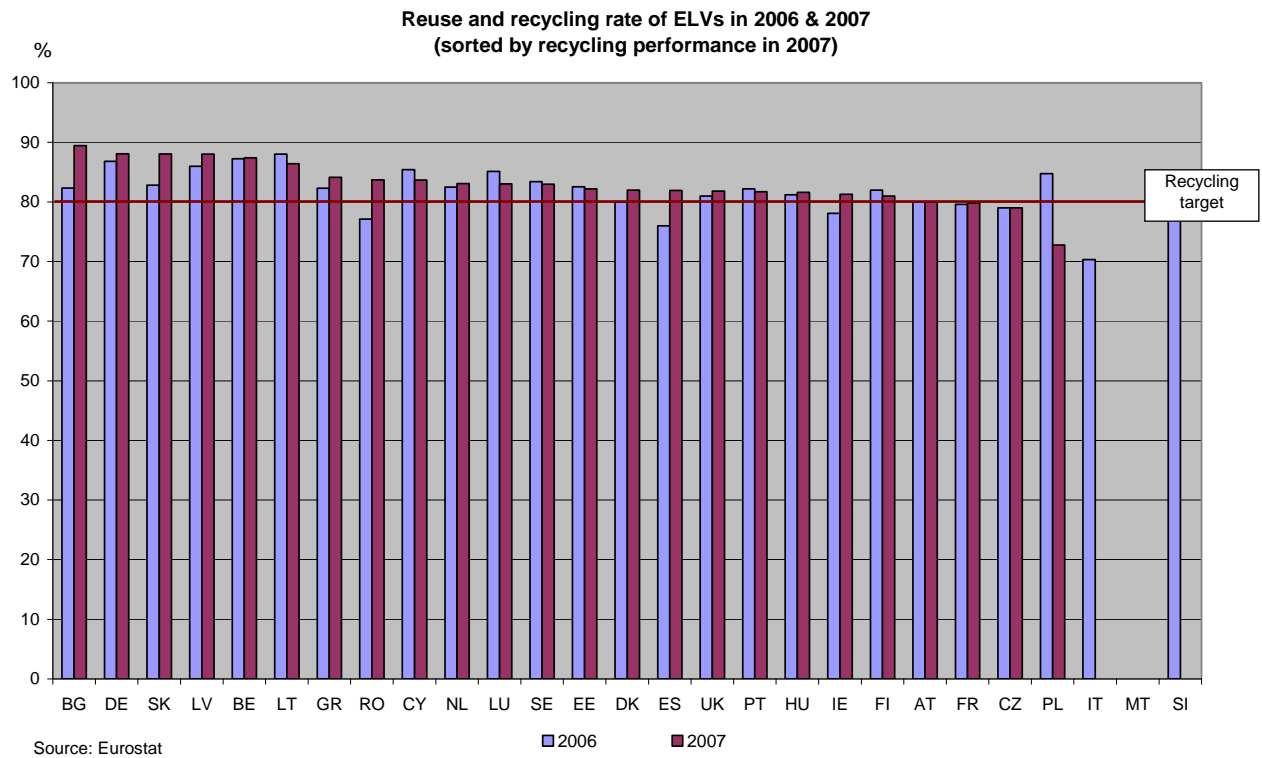
**Recycling and Recovery Rate for Packaging Waste 2006 & 2007**



## End-of-life vehicles

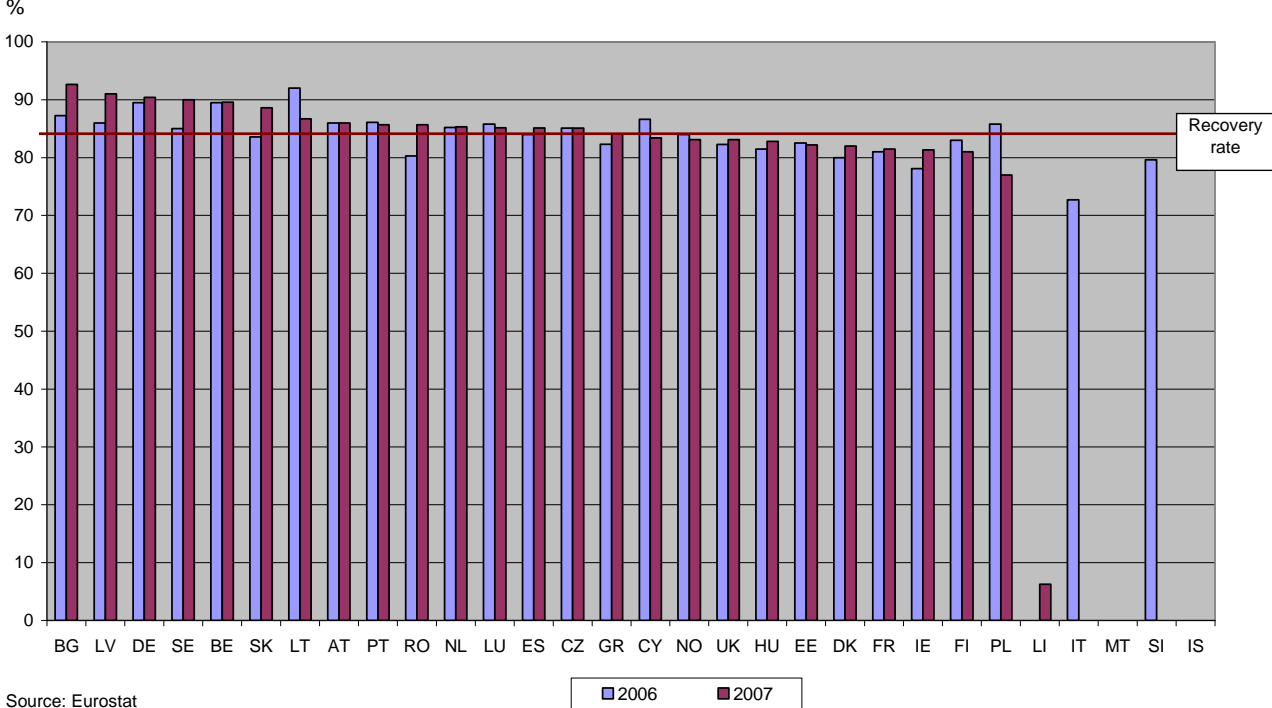
**Figure 4:**

Source: Eurostat.



**Figure 5:**

Reuse and recovery rate of ELVs in 2006 & 2007,  
sorted by recovery performance in 2007



## WEEE

**Figure 6:**

	COLLECTION	RECOVERY TARGETS								
	TARGET	1	2	3	4	5	6	7	9	10
	Collected from private households, target:	Large household appliances	Small household appliances	IT & Telecommunication	Consumer equipment	Lighting equipment	Electrical & electronic tools	Toys, leisure & sports equipment	Monitor & control instruments	Automatic dispensers
	in kg	in %								
target	4 kg per capita	80	70	75	75	70	70	70	70	80
BE	7,2	88	94	92	86	84	84	M	80	M
DK	10,8	97	96	92	91	85	96	96	96	97
DE	8,6	91	92	95	95	100	84	83	69	94
IE	M	M	M	M	M	M	M	M	M	M
EL	0,9	97	92	89	89	0	98	94	0	99
ES	3,6	76	59	79	94	92	73	66	84	M
FR	0,1	0	0	89	100	0	97	0	74	7
IT	0,8	M	M	M	M	M	M	M	M	M
LU	8,1	94	85	87	95	85	85	85	92	
NL	5,7	87	74	96	87	91	74	74	90	90
AT	7,4	87	85	87	89	86	85	86	86	93
PT	0,4	92	82	86	78	95	83	85	0	0
FI	7,1	91	74	76	74	79	73	60	48	90
SE	12,7	92	87	92	109	91	34	12	15	98
UK	M	M	M	M	M	M	M	M	M	M

target met  
target not met

Collection and recovery rates for WEEE waste in 2006. Green – target met, red – target not met. As of end 2006, targets will become legally binding for EU15 (names of countries highlighted in yellow on the left), NMS having transition periods. Source: Eurostat.

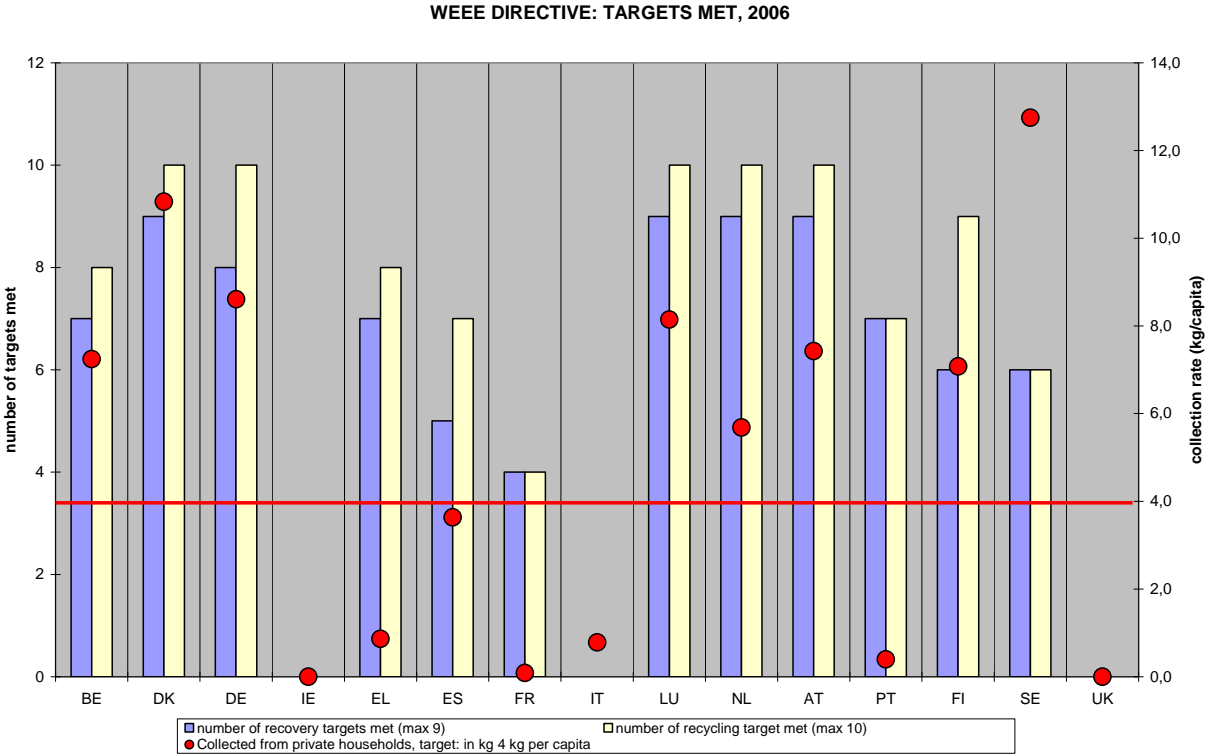
**Figure 7:**

	RECYCLING TARGETS									
	1	2	3	4	5	6	7	9	10	
	Large household appliances	Small household appliances	IT & Telecommunication	Consumer equipment	Lighting equipment	Electrical & electronic tools	Toys, leisure & sports equipment	Monitor & control instruments	Automatic dispensers	
	in %									
target	75	50	65	65	50	50	50	50	75	
BE	82	80	89	83	80	80	M	78	M	
DK	88	82	81	79	85	82	81	81	81	
DE	84	67	78	78	88	70	70	59	64	
EE	M	M	M	M	M	M	M	M	M	
IE	M	M	M	M	M	M	M	M	M	
EL	97	92	89	89	0	98	94	0	99	
ES	69	59	77	90	92	73	58	64	M	
FR	0	0	81	100	0	78	0	73	7	
IT	M	M	M	M	M	M	M	M	M	
LT	71	51	72	54	29	59	68	20	62	
LU	92	84	82	88	85	84	84	86		
HU	85	79	76	59	59	67	91	78	29	
NL	77	70	78	80	90	70	70	90	81	
AT	84	74	75	78	74	76	74	75	89	
PL	4	4	4	5	36	0	0	0	0	
PT	92	82	86	79	95	83	85	0	0	
SK	89	70	74	78	70	68	82	83	88	
FI	84	71	72	72	78	74	59	45	83	
SE	92	87	94	109	93	38	12	16	100	
UK	M	M	M	M	M	M	M	M	M	
NO	82	57	72	74	94	90	72	88	56	

target met  
target not met

Recycling rates for WEEE waste in 2006. Green – target met, red – target not met. As of end 2006, targets will become legally binding for EU15 (names of countries highlighted in yellow on the left), NMS having transition periods. Source: Eurostat.

**Figure 8:**



Targets already met for the WEEE Directive (only those countries for which the targets are legally binding as of end 2006). Maximum 9 targets applied for recovery, maximum 10 for recycling, which means that Member States meeting all of the applicable targets would score at 9 and 10 respectively.

Comments: In Luxembourg no automatic dispensers (category 10) were put on the market; the recovery and recycling target for this category are considered to be met. Ireland and the UK have not reported their data, hence collection rate is shown as 0.