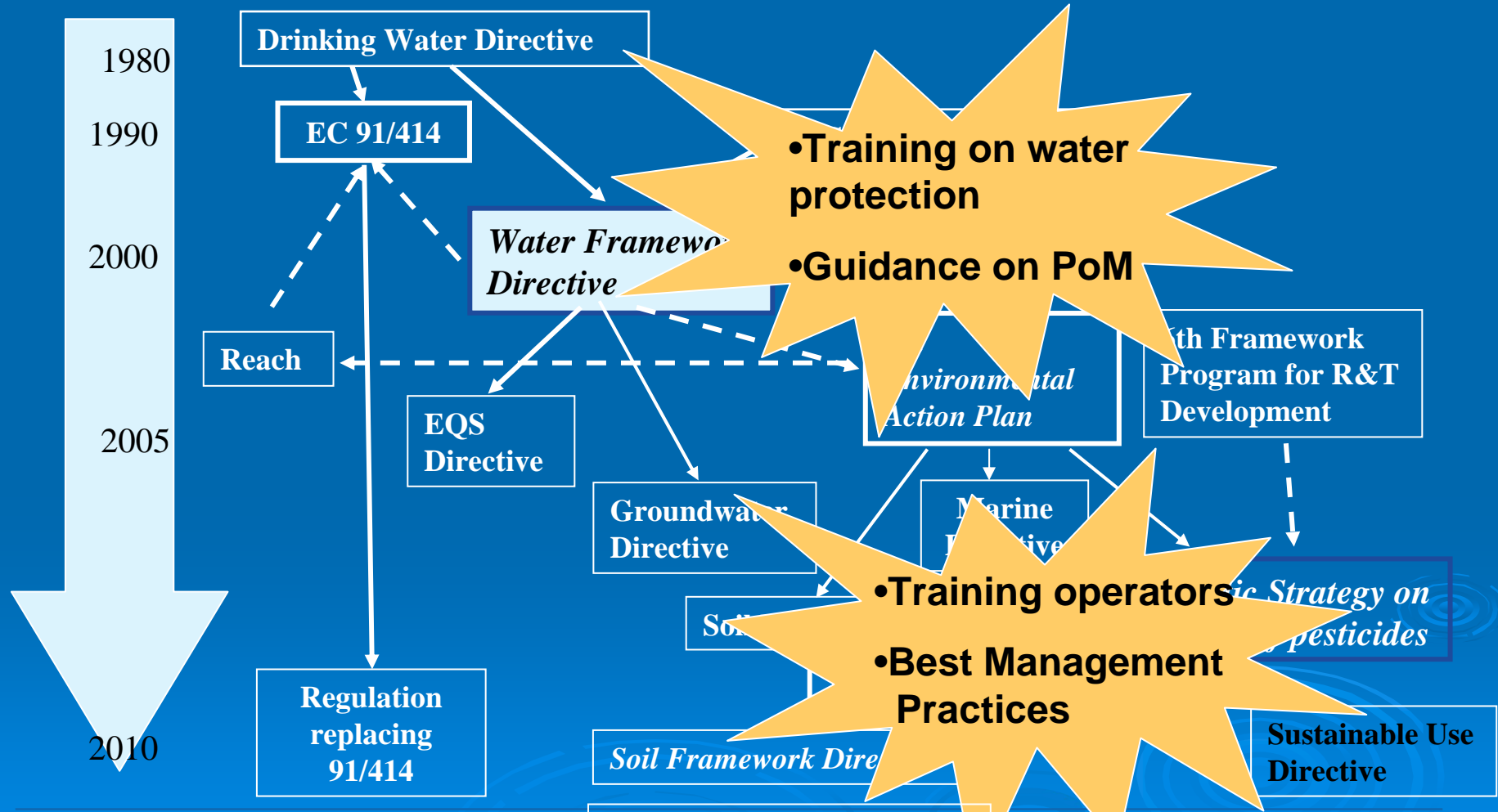


## Train **O**perators to **P**revent **P**oint **S**ources – an EU – Life and ECPA funded project

- Overall framework & relevance for SU
- TOPPS objectives, structure, strategy
- Achievements
- Lessons learned & conclusions

# TOPPS fits with EU legislation framework



Source: Syngenta

## TOPPS in Context

### Achieving the Sustainable Use of Pesticides / NAPs

- Focus needs to be on further risk & impact reduction during the use phase of plant protection products
  - Main goal of the Framework Directive
  - Registration of products covers risk assessment and products are considered safe for use
  - Loss of many PPP solutions due to review process and expected due to new 91/414
  - Diversity in cropping systems requires a diversity of plant protection product solutions
  - Resistance management
  - Implementation of IPM
  - IPM a holistic concept , part on Integrated Crop Management and Integrated Farming needs a variety of plant protection tools

## TOPPS in Context

### Achieving the Sustainable Use of Pesticides / NAPs

- NAPs / Measures to be focused on improving practices
  - Measured by progress indicators: e.g. uptake of IPM, sprayers passing the inspection, uptake of PPE, use of modern technologies (e.g. spray drift reduction nozzles, induction bowls, spray rinse tanks)
- NAPs / Measures envisaged need to consider the economic, social & ecological aspects
  - This a part of sustainability
  - Economic and social indicators to be included in the NAPs
- The way forward is responsible use & impact reduction!
  - No direct link between the amount used and the risk involved
  - Allow agriculture producing high quality food for all consumers
  - Take into account that agriculture has to respond to many external factors (climatic, pest pressures, markets)

➔ responsible use practices are key

## TOPPS in Context

### Achieving the Sustainable Use of Pesticides / NAPs

- Improvement of practices is the way forward!
- Involvement of all stakeholders necessary to identify these and gain commitment for the practical implementation
- Directive offers a lot of opportunities

➔  
developed in

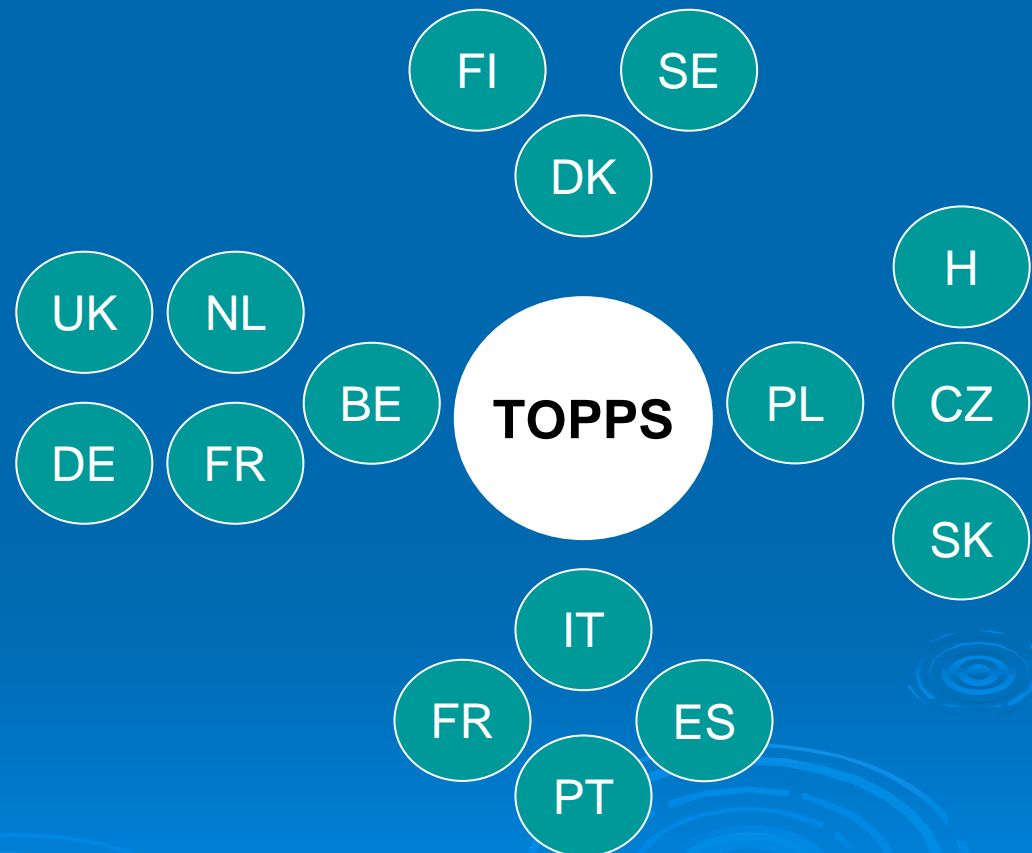
TOPPS = a valuable example for best practices,  
a stakeholder partnership

## TOPPS Objectives and scope

### TOPPS

is aimed at identifying **Best Management Practices** and disseminating them through **advice, training** and **demonstrations** at a larger co-ordinated scale in Europe with the intention of reducing losses of plant protection Products (PPP) to water

- **15 Member states**
- **12 Partners**
- **9 Contractors**



## Definitions: two main entry routes of PPP into water

### Point source

Point sources are related to the handling of pesticides

Key risky working processes are the

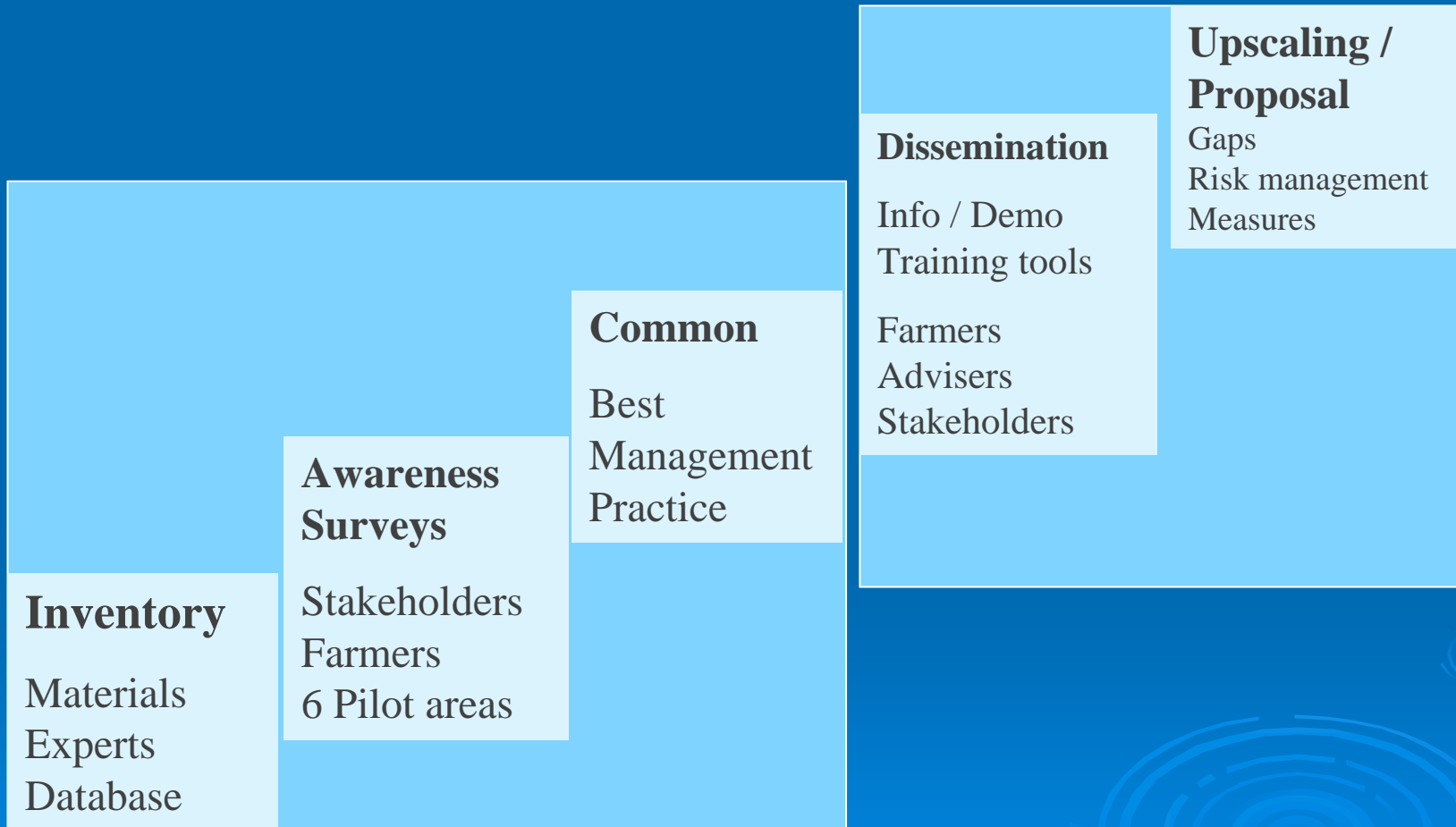
- Filling of sprayer
- Cleaning of sprayer
- Management of contaminated solutions after spraying (Remnant management)

### Diffuse source

Diffuse sources are mainly related to the application of pesticides and are influenced by soil conditions and weather

- Runoff from fields
- Drift

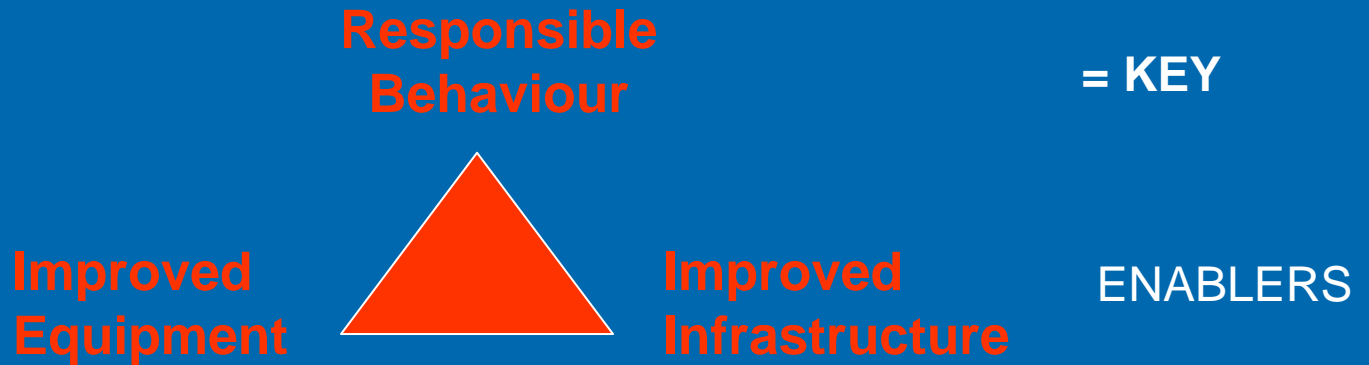
# TOPPS – PROJECT STEPS



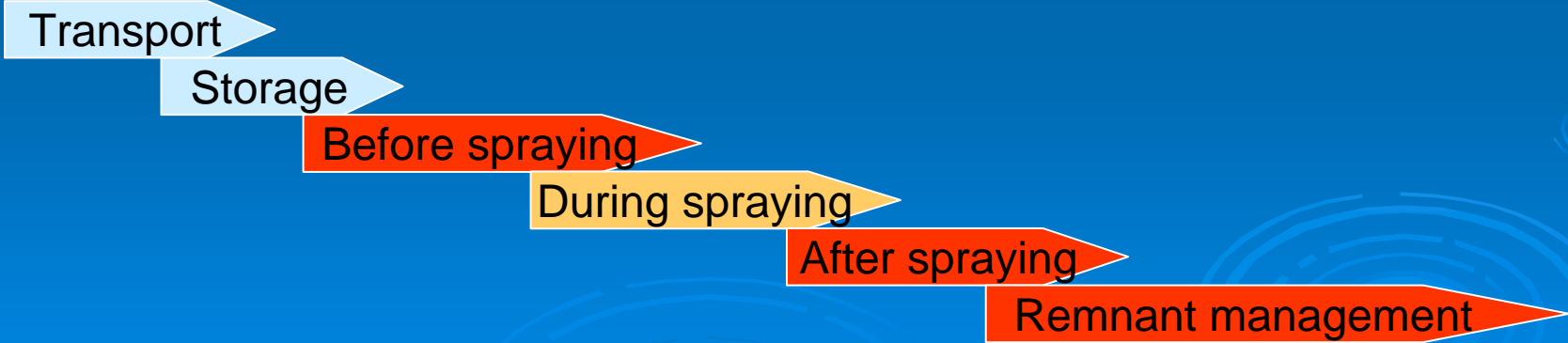
## Inventory

- More than 1300 addresses of experts and stakeholder organisations collected
- Materials on point sources
  - in most countries not existing
  - where available only addressing isolated aspects & scattered
  - no consistent approach (no working process view)
- Very few studies available where point sources significance was studied (DE, BE, UK, FR, SW)

# Key strategic elements



.....along working processes, ensure consistency



# Common Best Management Practices BMPs developed (15 countries)

## Common Best Management Practices



## Reference for advisers and authorities in 12 local languages

- Polish
- Czech
- Hungarian
- Slovak
- German
- French
- Danish
- Italian
- Spanish
- Portuguese
- English
- Dutch

Point of success: Common EU wide BMPs

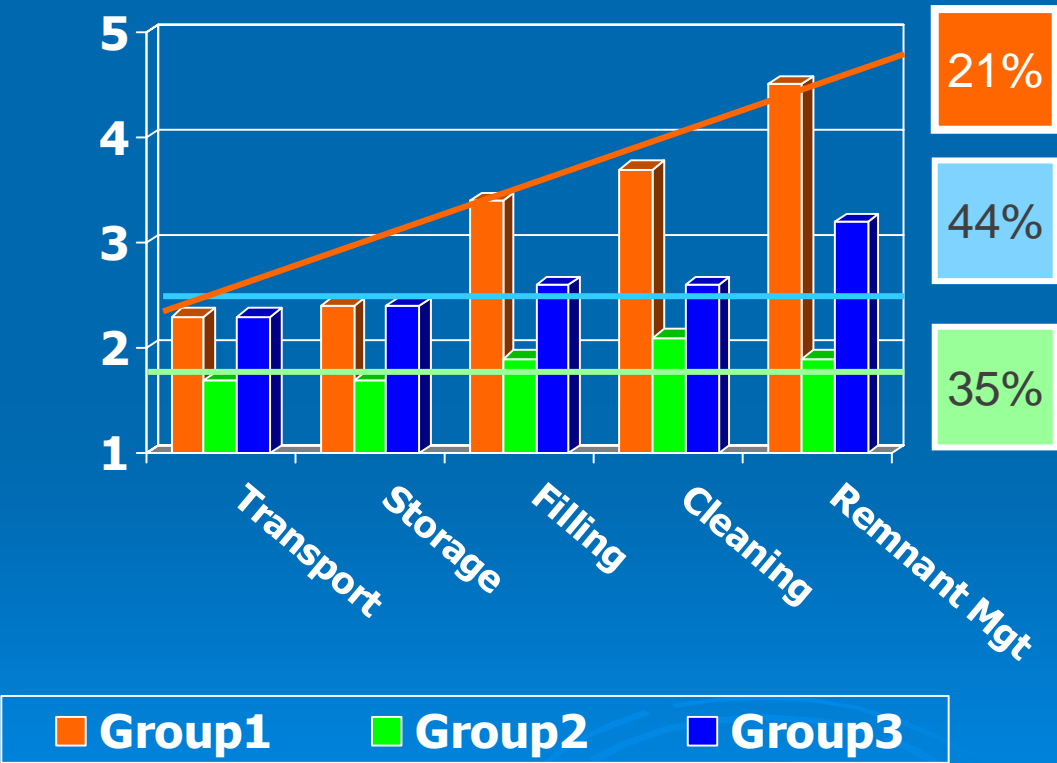
# Training / advice materials

.... a picture tells more than 1000 words ! (Picture gallery)



# Farmers perception of potential risks is not homogeneous

Awareness is not homogeneous  
 Similar pattern in other catchments found  
 (Example: Italian study n=200)



## Challenge !

How can we get awareness and information to those farmers, which are not reached by information and advice today ?

**Need for Training and advice is obvious**

**Implementation concepts needed**

Rating: 5 very important...1 not important

# Dissemination / Training / advice material – available via web downloads

- BMP's in 12 languages
- Demonstration trailers , exhibitions & fairs
- Flexible displays with BMPs (16 languages)
- Demonstration farms (10)  
FR, G, B, UK, DK, PL, IT, SP,
- Trainer handbook, picture gallery, video, technical brochures (technology, infrastructure)

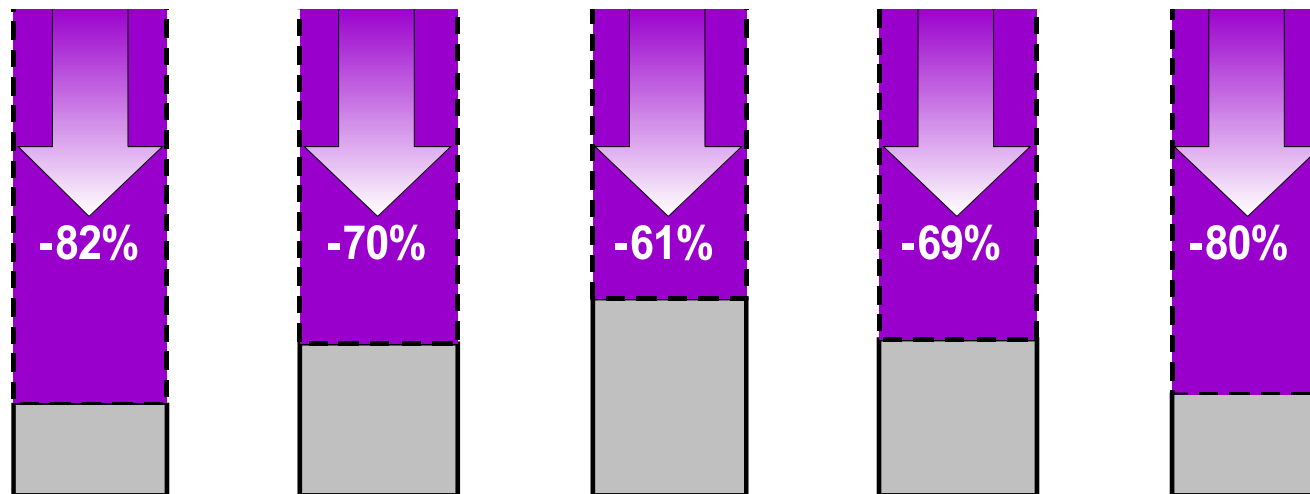



The collage features several TOPPS educational materials:

- Brochure Cover:** Titled "best Practice, better Water Protection". It features a tractor in a field and a large blue water droplet. The text includes "Prevent water contamination through point sources" and "BEST MANAGEMENT PRACTICES".
- "After spraying" Poster:** Provides instructions for cleaning the sprayer tank, stating "with you for cleaning the tank. Also clean the inside of the tank at least three times".
- "Before spraying" Poster:** Contains safety instructions and icons, including a crossed-out icon of a person drinking from a water source and an icon of a person filling a container.

**Changes after intensive training and transfer of sprayer cleaning to the field .- Study:Univ. Giessen Hessen /Germany**

**Rel. reduction of PPP pollution in 5 catchments sewage plants**



The cleaning process of the sprayer transfered to the field is able to reduce the point source pollution by about 70%

## What is achieved by TOPPS?

- Creation of awareness of the significance of point sources
- Basic packages for information, training and demonstrations is developed and available for farmers and advisers
- Start discussion with equipment manufacturers on necessary improvements.
- TOPPS BMPs can set a European baseline for the advisory framework
- TOPPS provides a solid basis for multistakeholder discussions on sustainable use and water protection
- TOPPS has developed a valuable European Network of dedicated experts, which can be helpful in enhancing SU

## Lessons learned / conclusions

**Strategic elements**

**Responsible  
Behaviour**

**Improved  
Equipment**

**Improved  
Infrastructure**

**Implementation needs**

**Right Focus (priorities)**

**Support**

**Commitment**

**Ensure consistency in messages**

**Use available expertise & existing networks (TOPPS cluster approach, bottom up partnership)**

# Thanks for you attention

## TOPPS-Partners

European  
Crop Protection  
Association  
(ECPA)



6, E. Van Nieuwenhuyselaan  
1160 Brussels, Belgium  
[www.ecpa.be](http://www.ecpa.be)

Harper Adams  
University  
College



Edmond  
TF108NB Newport, Shropshire  
United Kingdom  
[www.harper-adams.ac.uk](http://www.harper-adams.ac.uk)

PC fruit



Fruittuinweg1  
3800 Sint Truiden  
Belgium  
[www.pcfuit.be](http://www.pcfuit.be)

Research Inst.  
of Pomology  
and Floriculture



Pomologiczna 18  
Skierniewice  
Poland  
[www.insad.pl](http://www.insad.pl)

Danish  
Agricultural  
Advisory Service,  
National Centre  
DAAS



Udkaersvej 15  
Aarhus N, Denmark  
[www.landscentret.dk](http://www.landscentret.dk)

Institute for Land  
Reclamation and  
Grassland Farming  
IMUZ



Falenty-Aleja Hrabka 3  
Raszyn  
[www.imuz.edu.pl](http://www.imuz.edu.pl)

Università di Torino –  
Dipartimento di Economia e  
Ingenieria Agraria Forestale  
e Ambientale  
DEIAFA



Via Leonardo da Vinci 44  
10095 Grugliasco (TO), Italy  
[www.agraria.unito.it](http://www.agraria.unito.it)

Universitat  
Politècnica  
de Catalunya – Consorci  
Escola Industrial de Barcelona  
CEIB



08036 Barcelona  
Spain  
[www.esab.upc.es](http://www.esab.upc.es)

Provinciaal  
Onderzoeks-  
en Voorlichtingscentrum  
voor Land- en Tuinbouw POVL



Iesperweg 87  
8800 Rumbek  
Belgium  
[www.povlt.be](http://www.povlt.be)

Centre National du Machinisme  
Agricole, du Génie Rural,  
des Eaux et des Forêts  
CEMAGREF



361, Rue Jean François Breton  
Montpellier CEDEX  
France  
[www.cemagref.fr](http://www.cemagref.fr)

+ 9 sub -  
contractors

Arvalis –  
Institut  
du Végétal



Station d'expérimentation  
91720 Boigneville  
France  
[www.arvalis.institutduvegetal.fr](http://www.arvalis.institutduvegetal.fr)

Landwirtschafts-  
kammer  
Nordrhein-Westfalen



Nevinghoff 40  
48147 Münster  
Germany  
[www.lk-wl.de](http://www.lk-wl.de)