



"We have come to worship HIM"
(Mt 2:2)

Environmental Statement 2005

of Weltjugendtag gGmbH, Cologne

Contents

Table of contents	2
Foreword	3
Word of welcome	4
Weltjugendtag gGmbH – Description of the organization	5
Description of central locations	7
Steps on the path towards environmental management for the XX World Youth Day 2005	8
Guidelines for the environmentally friendly organization of the XX World Youth Day 2005 in Cologne	10
The environmental management system of the XX World Youth Day 2005	12
Environmental impact	15
- Direct environmental impact	17
- Indirect environmental impact	22
2005 Environment program	25
Declaration of validity	29
Contact, promoters, Imprint	30

Foreword

Christians, church groups and institutions are facing up to their shared responsibility for the preservation of God's creation. They know that they are called on to do so by the Biblical command to "till and keep" the earth (Gen 2:15), in other words to keep it habitable for coming generations through sustainable ways of life and management.

Young Christians and church youth associations in particular have often broken ground in the fight for "justice, peace and the preservation of God's creation", and continue to the present day to act as a major driving force. In recognition of this commitment, and in an awareness of their special responsibility, the organizers of the XX World Youth Day in Cologne have committed themselves to ensuring that this unique major event in Germany will be prepared and organized in a manner that is as environmentally friendly as possible. By providing spiritual inspiration and practical hints, and through public relations work, we are encouraging the young participants to continue to make a contribution in word and deed to the preservation of God's creation once they have reached their homes.

By establishing our environmental management system and having it independently verified, we are sending out a signal for more systematic environmental protection at major events. We are setting standards for environmentally friendly planning, and recommending organizations and enterprises to imitate this undertaking. What is more, we are encouraging institutions within the Church to intensify their active environmental protection efforts by introducing an environmental management system.

We would like to thank the Ministry for the Environment and Nature Conservation, Agriculture and Consumer Protection of the Land North-Rhine/Westphalia for its financial support of the project, as well as for their factual advice and support the Center for Ecology & Development (KATE) in Stuttgart, the Federal Ministry for the Environment, Nature Conservation and Nuclear Safety, and the Federal Environmental Agency, in addition to a large number of other authorities.

Prelate Dr. Heiner Koch
Secretary General of the XX World Youth Day 2005

Hermann-Josef Johanns
General Manager of Weltjugendtag gGmbH

Word of welcome

Dear Reader,

I am pleased to say that the planners of the XX World Youth Day 2005 decided to think of environmental protection at this major event right from the start. This is exemplary. They have decided to install an environmental management system, and to base this endeavor on the requirements set out in the European Regulation for eco-management and audit schemes – shortly referred to as EMAS. The preparatory office has therefore chosen a tool which has proven itself and earned our appreciation at the Federal Environmental Agency. Through its official registration as an EMAS participant, World Youth Day is sending signals to the public for environmental protection and the preservation of God's creation. It is especially impressive that a very short period of only nine months has passed between the decision of the World Youth Day Office Management Team to participate in EMAS, and successful registration. Congratulations are due for the success of this major feat.

This commitment will be a positive benefit to the environment not only when it comes to the technical means used to protect the environment, and in the policy of purchasing and using environmentally friendly products. It is just as important for the staff, and the many thousands of volunteers, to be made aware of environmental concerns. This also applies to the mass of information on environmentally sound conduct during the event days: This will bring about a direct, and in many cases also long-term, tangible and welcome reduction in environmental impact.

By itself, the anticipated number of 800,000 people attending the Concluding Mass, and the geographical spread of the events over the entire Cologne Archdiocese, already make Weltjugendtag gGmbH's participation in EMAS an event worthy of attention from an environmental policy point of view.

The only comparable event I can recall is the 20th Winter Olympics in Turin, which have an environmental management system that is certified in accordance with the ISO 14001 international environmental protection standard, and are also registered as EMAS participants. The Winter Olympics will not be taking place until next year, however. In this sense, World Youth Day is a prominent example of environmentally sound event organization. I truly hope that this example will have many imitators.

I wish you all the best for World Youth Day in Cologne!

Prof. Andreas Troge

President of the Federal Environmental Agency

Weltjugendtag gGmbH – Description of the organization

Weltjugendtag gGmbH was established in Cologne on 25 July 2002. The shareholders are the Association of German Dioceses and the Cologne Archdiocese.

The objective of the society is to further the purposes of the Church, to promote youth assistance, to advocate international understanding and to pursue cultural goals. The objective of the society is furthermore to spread and deepen belief in God and in the future of humankind in faith." (Excerpt from the Register of Companies)

The core task of Weltjugendtag gGmbH is to organize and implement the XX World Youth Day (WYD) 2005 in Cologne. The Pope has also issued an invitation to attend WYD. At this major event, which is unique in Germany so far

- The young people of all continents are to join together in celebrating a feast of faith incorporating prayer and services,
- international music, theater, cabaret and cinematographic performances from all parts of the world are to be organized, and
- an opportunity is to be provided to young people from all over the world to enter into an encounter, find common ground and go forth to the ends of the earth to serve as a beacon of reconciliation and mutual consideration.

Bodies

- Weltjugendtag gGmbH is managed by a three-person team (**Management Team**).
- World Youth Day's legal and financial policy is adopted by the six-person **Supervisory Board** of WJT gGmbH.
- At episcopal level, there is a "**Diocesan Management Board**" with Cardinal Joachim Meisner (Cologne) as chairman, as well as Cardinal Karl Lehmann (Mainz) and Bishop Franz-Josef Bode (Osnabrück).
- Prelate Dr. Heiner Koch has been nominated **Secretary General of World Youth Day** to act as an intermediary between this body and the World Youth Day Office, and as a point of contact for the Vatican.
- The pastoral guidelines and the entire concept of World Youth Day are subject to approval by the eleven-strong "**Local Organization Committee**".

The World Youth Day Office

The administrative apparatus of Weltjugendtag gGmbH - the "World Youth Day Office" – is managed by Rev. Ulrich Hennes, World Youth Day Secretary, and Rev. Georg Austen, World Youth Day Secretary acting on behalf of the German Bishops' Conference, as well as by General Manager Hermann-Josef Johanns.

85 employees – 82 full-time and three part-time – were working in the WYD Office at the end of May 2005. In addition, roughly 135 staff members are working on a voluntary basis to support the organization.

The World Youth Day Office is sub-divided into 13 Departments.

On 11 August 2004, the Management Team adopted the plan for the "Environmentally friendly organization of WYD 2005" as a binding foundation for the work of the Departments. It forms the basis of a systematic approach to reduce the environmental impact, whilst at the same time accommodating economic and social factors.

The World Youth Day Office has considered and continues to consider the right way to establish an environmental management system as follows

- to establish a structure of expectations and endeavors in order to make it possible to organize World Youth Day in an environmentally sound manner;
- to recognize and carry out programs to reduce the use of resources and the environmental burdens to be anticipated;
- to promote staff motivation and environmental awareness, to encourage them to work in an environmentally sound manner and to help preserve God's creation;
- to create an awareness among voluntary staff;
- to reduce costs in subordinate areas;
- to set a personal example in campaigning among pilgrims and interested parties for a viable future and greater justice worldwide;
- to attain plausibility and shape its image among the public; and
- to serve as a model for other major events, including for the next major World Youth Day.

Even in the face of such overwhelming tasks, there has been a willingness right from the outset to consider environmental concerns which has become more pronounced in recent months.

Description of central locations

The World Youth Day Office in Cologne

The office premises accommodating the full-time and voluntary staff will be housed in two administrative buildings in Cologne until the end of 2005: Roughly 1,750 m² of office space has been rented on three floors at Gereonstr. 1-3 (building A), added to which is about 950 m² of office space spread over two floors at Gereonstr. 25-29 (building B). Each staff member has a mathematical average of 12.3 m² of office space.

Cologne is a well-developed transport hub. Thanks to its central location, the facility is easily reached by public transport, and is a few minutes' walk from Cologne Central Station. The staff are offered an employer-sponsored annual public transport ticket (Jobticket), and most of them indeed use it.

The "Marienfeld" near Kerpen and Frechen

Location of the concluding event on August 20 and 21, 2005

The complex, 320 ha in size, is located in a part of the former Frechen open-cast mine belonging to Rheinbraun AG, now RWE Power AG, in the Rhine-Erft district, straddling the municipal boundaries of the towns of Kerpen and Frechen. The part now referred to as the Marienfeld, which is to be used for the concluding events of the XX World Youth Day, is in the possession of only a few owners, the main owner being RWE Power AG. The open-cast mine has been filled in and recultivated; it is a part of the Kottenforst-Ville Natural Park. The area rented by WJT gmbH – mostly farmland – has been largely planted as a meadow.

The complex is bordered to the East by a nature reserve and a landscape protection area, a landscape protection area being situated to the North; in the West there is an area designated under the EU's Directive on the conservation of natural habitats and of wild fauna and flora, in addition to a riding school, and another in the South West. The settlement of Horrem is towards the North, and there is an industrial zone in the South.

Wherever possible, the ecologically important habitats are spared in the development of the complex by adjusting the routes taken by paths, and where appropriate by closing them off and by using signs. In places where clearing is unavoidable, new areas will be planted to compensate after restoration.

The findings of a precautionary study of the "young" complex for rare plants or animal species did not require additional protective measures. As a preventive move, however, WYD applied to be exempted from the prohibitions of section 42 of the Federal Nature Protection Act (BnatSchG) in accordance with section 62 of the Federal Nature Protection Act for the planned construction measures on the Marienfeld, as well as in the preparation and implementation of the event.

Furthermore, an exemption from the stipulations of the landscape plan was applied for in accordance with section 62 of the North-Rhine/Westphalia Landscape Act (LG NW) concerning possible prohibitions related to the rights of way within protected areas and objects or bordering them.

Steps on the path towards environmental management for the XX World Youth Day 2005

June 2004

Dipl.-Ing. Thomas Here appointed by Weltjugendtag gGmbH as environmental officer.

August 2004

Plan for the "Environmentally friendly organization of the XX World Youth Day 2005 in Cologne" adopted by the Management Team on August 11.

September 2004

On September 20, the Conference of Heads of Department approves the establishment of an environmental management system in accordance with Regulation (EC) No. 761 / 2001 (EMAS).

October 2004

The "Environmental Steering Group" set up on October 21, including one representative from each Department. The Center for Ecology & Development (KATE) in Stuttgart is commissioned to accompany and support the establishment of the environmental management system.

November 2004

Using survey forms and interviews, the data are collected for the environmental audit. In a report summarizing the results, environmental services already rendered, possibilities for action and "critical points" are also listed.

On November 25, the "Environmental Steering Group" set out the fields of action – in accordance with environmental relevance and organizational capacity (portfolio method).

December 2004

Comprehensive environment program adopted on December 29 by the Management Team after approval by the Heads of Department.

February 2005

"Guidelines for an environmentally friendly organization of the XX World Youth Day 2005" adopted by the Management Team on February 9 after a broad internal discussion.

March 2005

The public relations work intensified to describe the environmental commitment of the World Youth Day Office.

April 2005

Environmental management system examined in the Internal Audit on April 7 for compliance with the requirements of the EMAS Regulation.

May 2005

Management review implemented on May 25 in the Management Team; corrective measures necessary or recommended are to be carried out.

June 2005

Environmental management system validated by environmental verifier Henning von Knobelsdorff on June 6 and 7 in accordance with Regulation (EC) No. 761 / 2001 (EMAS) and DIN EN ISO 14001:2005.

Guidelines for the environmentally friendly organization of the XX World Youth Day 2005 in Cologne

Taking responsibility

World Youth Day influences the way young people form their opinions on issues such as justice, peace and preserving God's creation (one of the aims of the XX World Youth Day 2005).

1. Our aim is to make the XX World Youth Day 2005 an environmentally friendly event

World Youth Day 2005 is a unique event attended by several hundred thousand people who will come to Germany from all over the world. It involves a lot of cost and organisation, and has a considerable impact on the environment. This is why we feel particularly committed to sustainability. By creating the most environmentally friendly conditions possible, we bear witness to our shared responsibility for God's creation and its future, and for fair opportunities in life for all people in a unified world. We strive to give a good example and inspire others.

2. We act in responsibility for God's Creation

God entrusted us with the earth, to till and keep it (Genesis, 2: 15) and to take responsibility for the future of creation. As Christians we see all life and the whole world as both a gift from God and a duty. We cannot accept that the goods of the earth are treated with disrespect or without regard for the well-being of future generations. As a result of our responsibility to God, to our fellow men and women, and in particular to all disadvantaged people and to future generations, we strive for a life of solidarity and sustainability.

3. We manage our affairs in an environmentally friendly and socially responsible way

In all our work – and especially the way we organize our administration, in the opening events, the Welcome Ceremony for the Pope, as well as the vigil and the concluding mass at Marienfeld near Kerpen – we endeavor to achieve solutions that involve the least possible harm to the environment. We promote sustainable management. In particular, we seek to save raw materials and energy, and we are always working on new ways to avoid or reduce environmental impact and hazards.

We are committed to observing all relevant environmental instructions, laws and regulations. We use the best possible environmentally friendly technologies available, insofar as they are economically viable for us. We give preference to environmentally friendly products, procedures and services, and also products from fair trade wherever possible. We select our business partners according to ecological and social criteria.

4. We employ systematic environmental management methods

We are in the process of setting up an EMAS environmental management system so as to gradually and constantly improve our environmental status. We support sustainable approaches and the active participation of all those who are working – as members of staff or volunteers – in the preparation and organization of World Youth Day. We motivate staff to make proposals for the improvement of the event's environmental impact.

5. We practice and encourage dialogue

We regularly inform the public about our successes and progress in our endeavors to act in a sustainable and environmentally friendly manner, but we are also frank about the limitations and unavoidable compromises we face. We seek out and nurture cooperation with state bodies, community-level authorities, specialist organizations and church institutions (particularly those that also practice environmental management). We are open to consultation and support, ideas and constructive criticism, and we know that we are dependent on these.

6. We encourage others to care for God's Creation

Our environmentally friendly organization of World Youth Day sets a precedent for others. We encourage German dioceses to make their own meetings at the Days of Encounter environmentally friendly, and we appeal to other enterprises and organizers of large-scale events to do the same. Our spiritual input and practical advice, our own exemplary action and public relations work all aim to encourage the young people who take part in World Youth Day to take the message home – to continue to protect the environment and preserve God's creation.

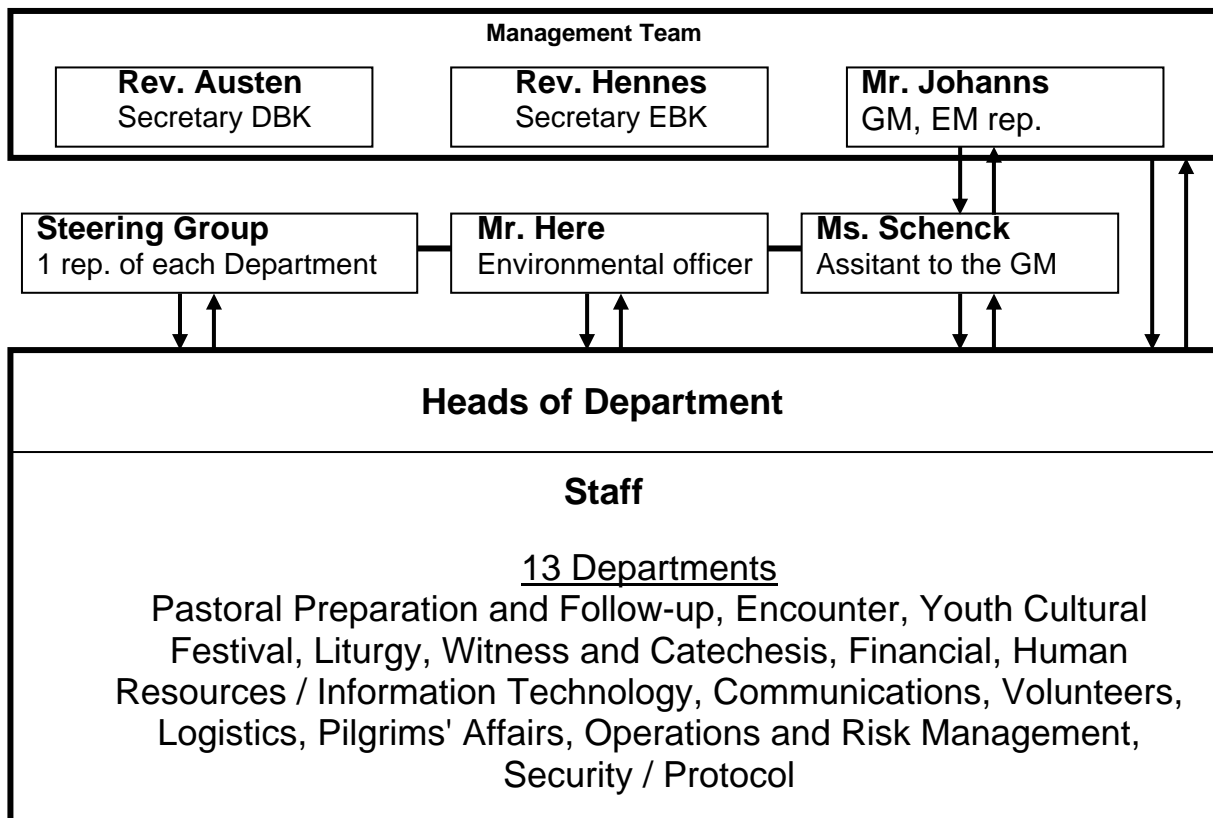
The environmental management system of the XX World Youth Day 2005

The goal of the environmental management system is to continually improve our performance in protecting the environment and reducing the environmental impact in the planning, implementation and follow-up phases of the XX World Youth Day 2005 in Cologne. We take EMAS as our orientation in this endeavor.

With a view to organizing World Youth Day to be as environmentally friendly as possible, we describe our goals, the main areas and processes, the organizational structures, processes and methods. In addition to the specific standards (cf. Environment Management Handbook) particularly the Christian religious motives and values, as well as ethical criteria, are taken into account.

The Handbook is available to all staff via the internal network (PISO). It is centrally administrated. This means that the most up-to-date instructions and documents are always available to everyone.

Our environmental management system is structured as follows:



Acronyms:

GM= General Manager

EM = environmental management

DBK = German Bishops' Conference

EBK = Cologne Archdiocese

The above players have the following tasks and responsibilities:

The General Manager (environmental management representative of the Management Team)

- takes on overall responsibility for establishment and implementation of environmental management in accordance with EMAS;
- ensures the necessary decisions are taken in the Management Team (environmental guidelines, environment program, any guidelines for individual Departments...);
- communicates the "Environmentally friendly organization of the WYD" in the Supervisory Board and at the shareholders' assembly, as well as in the Local Organization Committee;
- is responsible – together with the other members of the Management Team and the Head of the Communications Department – for presenting the environmental commitment to the outside world in planning and implementing WYD;
- in accordance with the rules of procedure, maintains the balance between ecologically desirable and economically feasible decisions on expenditure.

The environmental officer

- carries out his tasks in coordination with the General Manager (environmental management representative) or his assistant;
- advises the Management Team and the Departments in specialist environmentally-relevant matters, where appropriate proposing corrections and potential improvements;
- acquires information and drafts documents to prepare imminent decisions for the management;
- coordinates the drafting of the environmental management system;
- heads the "Environmental Steering Group";
- plans and organizes the "internal audits";
- accompanies the implementation of the environment program;
- establishes contacts – with a view to the success of the WYD – with other organizations of church environmental work, as well as with non-church specialists.

The "environment" Steering Group

- is composed of representatives of all Departments;
- supports the implementation of the environment program;
- takes care of communication and networking between Departments;
- advises the environment program with proposals to enhance environmental performance with documents to be submitted to the Heads of Department or to be subsequently put in force by the Management Team;
- promotes the information and motivation of the staff in the respective Departments.

The Heads of Department

- support the goal of the "Environmentally friendly organization of WYD" on the basis of the environmental concept adopted by the Management Team on August 11, 2004;

- are continually informed of the initiatives on the construction and expansion of environmental management in accordance with EMAS (via their representatives in the Environmental Steering Group and by the environmental officer);
- examine and decide on suggestions for improvement regarding their Department, which in turn form the basis for the environment program;
- are responsible for the implementation of the measures related to their Department, and in this way contribute towards reducing the environmental impact of WYD.

The staff

- submit improvement suggestions;
- are given encouragement and information on ways to reduce their environmental impact;
- are actively involved – in the context of their specialist tasks – in the implementation of measures, and hence help bear responsibility for reaching the goal.

Security commissioners

are nominated for buildings A and B; their tasks are described in the Environment Management Handbook, Chapter 4.1.

Environmental impact

In describing the (anticipated) environmental impact of the XX World Youth Day 2005 in Cologne, it is necessary to distinguish between direct and indirect environmental impact:

- **Direct** environmental impact is that caused directly by the relevant locations.
- **Indirect** environmental impact is that caused by Weltjugendtag gmbH and its staff, including by setting an example, by creating an awareness and through communication, by giving instructions or when awarding contracts to outside companies.

The following (foreseeable) environmental effects were collected and evaluated according to the following criteria¹ in the course of the environmental audit:

1. Compliance with the provisions of environmental law
2. General assessment of an environmental problem
 - 2.1 Opinion of interested groups / global significance of an environmental impact
 - 2.2 Internal opinion of the staff
3. Quantitative contribution by the facility to an environmental problem
4. State-of-the-art / economic feasibility of improvements
5. Evaluation of the risk / potential for an incident to take place

List of environmental aspects and environmental impact

Activity / environmental aspects	Environmental law	Magnitude	Third-party interests	Detrimental environmental impact	Notes	Environmental impact	Influenceability	Evaluation
Operations and Risk Management	••	•••	•••	•••	Central: award of contract, acquisitions, disposal; energy supply on major complexes	Use of resources, emissions, refuse	•••	•••
Pilgrims' Affairs	••	•••	•••	•••	Coordinated depts. mobility, accommodation, catering, registration	see at Mobility, catering, accommodation, registration	•••	•••
Mobility	•	•••	••	•••	Pilgrims' arrival, transport during WYD, journeys to work, visitors, suppliers	Energy consumption, emissions detrimental to climate	••	•••
Catering	••	•••	••	••	Contracts already concluded; regional suppliers unable to meet needs	By transport and preparation: refuse, emissions	••	•••
Refuse volume	••	•••	••	•••	Various Departments affected; many individuals concerned	Can be reduced through refuse avoidance and recycling, choice of environmentally friendly packaging	••	•••

¹ Documented in detail in the Environment Management Handbook, Annex 8.

Environmental communication	•	••	••	•	Internal, external by press work, media, printed matter; exemplary function; see also "Volunteers"	Paper consumption, promotion of environmental awareness in society; signals for other major events	•••	•••
WYD Office	•	••	••	•	Time-limited tenancy agreement – flat-rate for utilities; no influence on technology, but on office procedures	No pollutants known, no hazardous substances; consumption of electricity, water, heat energy, paper...	••	••
Logistics	•	••	•	••	Accommodation and venues linked to local public transport where possible	Downstream effects related to transport, energy supply, refuse,....	••	••
Accommodation	•	••	•	••	In 69 municipalities	Refuse, emissions	••	••
Volunteers	•	••	•	•	Training	Expand knowledge and awareness; advise pilgrims	••	•
Noise	•	•	•	•	e.g. construction phase at Marienfeld, traffic, overnight guests	Disturbance of neighbors	•	•
Security/ Protocol	•	•	•	•	Security concept; care for the bishops et al.	see Mobility	•	•
Financial					Significant for data collection			•
Registration		•		•	Part of the Pilgrims' Affairs Department			•

Basic criteria: ••• = high •• = medium • = low empty box = none

The particular nature and uniqueness of a World Youth Day in Germany makes it difficult at the present time to offer a precise description of the environmental impact:

- The greatest direct environmental impact will be restricted to the event days in August 2005; the systematic collection of environmentally-relevant data has been commissioned. They will be evaluated and published in another report after WYD.²
- A description is provided of the major **foreseeable** environmental impact and the precautions taken to reduce environmental damage.
- By contrast, the environmental impact of the ongoing office activity in the WYD Office can be considered to be relatively low.
- The concluding report will reveal environmental benchmarks, and where possible will compare them with environmental benchmarks of roughly comparable major events.

² This project is being promoted by the Ministry for the Environment and Nature Conservation, Agriculture and Consumer Protection of the Land North-Rhine/Westphalia.

Direct environmental impact

Access to the "Marienfeld"³

This area is the responsibility of the "Operations and Risk Management" Department. The general contractor Arge Marienfeld and its suppliers and contractors were given written instructions to orientate their decisions in line with the "Environmentally friendly organization of the XX World Youth Day 2005" document.

Since the "Marienfeld" complex will be re-used as farmland after World Youth Day, any alterations – such as the altar hill, paths and supply lines – must be removed (in most cases at the expense of the organizers). For this reason, access roads will only be tarred as absolutely necessary for reasons of safety (ambulances, fire brigade, personal protection; supply routes) and for disabled access, and those only for about 2 km. Roughly 37.5 km of gravel paths, the vast majority of which are temporary, will be constructed on the existing turf and lucerne. Prior to this, geogrids will be installed to ensure even soil compression and, in addition to a mixture of rubble and loess deposits, will help to avoid compaction that would not be amenable to revegetation.⁴

For the construction of the 10 m high "Altar Hill" – surface area approx. 15,000 m², plateau with altar and almost 2,000 seats in a space of approx. 3,500 m² – roughly 80,000 m³ of gravel has been brought in by 5,500 articulated vehicles and HGVs. The related transportation and emissions can be recorded in the concluding report.

For reasons of healthcare (middle of the summer!), to save resources and avoid refuse, the pilgrims will be supplied free **drinking water** using the piped variant, at an additional cost of € 200,000. Pilgrims can fill their reusable pilgrim's bottle (0.5 liter) with pre-cooled drinking water at 40 supply points spread over the more than 320 ha large complex, providing 1,600 taps fitted with automatic closing valves.

When it came to **energy** supply, attention was first directed towards finding the best way of meeting requirements, and satisfying power peaks in particular. The current plan is to cater for 10 MW. Having made a detailed examination of conceivable alternatives, and despite the obligation to subsequently remove the equipment, the decision was taken in favor of cable supply by the RWE-Verbund (RWE Energy/Rhein-Ruhr and RWE Power AG). The avoidance of noise and exhaust fumes on the pilgrim field, as well as safety aspects, were decisive in reaching this decision. RWE supplies electricity in an energy mix of fossil and renewable energy sources.

Individual diesel generators which are noise-excluded and emit as few emissions as possible are in use during the construction phase. For safety reasons, they will be installed in marginal

³ see Section "Description of Central Locations", p. 7

⁴ Additional soil mechanical tests are being implemented on an ongoing basis by independent soil scientists and geologists in the framework of a procedure to conserve evidence.

areas during the event days, and will only be used where needed to provide additional supply⁵. Advance research revealed that neither generators running on vegetable oil, nor with particle filters, are currently available on the market, and that it would be financially prohibitive to either convert or retrofit them due to the limited period of their use. A risk to the soil or ground water is ruled out by complying with the statutory provisions when handling substances that are harmful to water.

To avoid damaging the neighboring **nature reserves and landscape protection areas**, as well as areas designated under the EU's Directive on the conservation of natural habitats and of wild fauna and flora, the necessary precautions were coordinated with the competent authorities and with nature conservation associations, with signs being put up and particularly sensitive areas of the landscape being closed off⁶. Voluntary helpers are receiving appropriate training. Also in coordination with nature conservation associations, minimum impact routes were determined for the pilgrims' footpaths to the complex. We have pledged to carry out revegetation and to plant additional areas to compensate for any unavoidable clearing⁷.

The pilgrim's guidebook calls on pilgrims to litter the ground neither with cigarette ends nor with bottle tops or other refuse⁸. The "protect our nature" principle, for which special signs have been developed, is also explained in the guidebook in several languages.

At the other central venues

– for instance Cologne Mediapark, Cologne Tanzbrunnen, the LTU-Arena in Düsseldorf, the Hofgarten in Bonn – electricity and water supply, as well as refuse disposal, are generally available, and extra supply will be provided where necessary. There are plans to set up central public 'water points' in the towns of Cologne, Bonn, Düsseldorf, Wuppertal and elsewhere, where pilgrims can obtain drinking water free of charge.⁹

Mobility¹⁰

The journey to in the Cologne Archdiocese

Thousands of participants from all over the world will travel to WYD by plane. A rough calculation of the associated emissions is to be carried out after WYD. Reference has been made to the possibility to make compensatory payments for climate protection measures – www.atmosfair.de.

The individual dioceses select the means of transport – rail or bus - for the journey to be made on August 15 from the 26 German dioceses to the Cologne Archdiocese. The World Youth Day Office entered into early negotiations with Deutsche Bahn AG (German Railways) to expand the

⁵ Two redundant generators are planned for uninterrupted supply of the television stations' outside broadcast trucks, as well as for the glass studios.

⁶ The Boisdorf Lake, as well as the narrow access to the Fürstenbergmaar.

⁷ see Landscape conservation Advisory Plan (Landschaftspflegerischer Begleitplan) chapter on "internal and external development".

⁸ see section on Disposal.

⁹ The significance of water as the No. 1 Food Item and the basic right to access to drinking water are also emphasized at the beginning of the UN's International Decade for Action 'Water for Life'.

¹⁰ Described in detail in the Transport Concept.

special trains offered and on reduced tariffs. Over and above this, Deutsche Bahn is offering the "World Youth Day Special Group Ticket".

Transport during World Youth Day

During World Youth Day, the individual municipal transport companies will provide a stretched-to-capacity extended rail service (underground, trams and local trains) until late in the evening. Almost all transport to the venues can hence be carried out using environmentally friendly public transport which the pilgrims can use free of charge¹¹ with their pilgrim ID card.

Most shared accommodation is close to the catechesis venues (churches in which spiritual events take place from Wednesday to Friday) which can be reached on foot. Additional buses are only required for eight accommodation locations¹².

Importance also attaches to transport provided by volunteers with their private cars for chauffeuring bishops and guests of honor. Holding three opening masses in Cologne, Bonn and Düsseldorf, instead of a central opening event on the Poller Rheinwiesen in Cologne, makes a major contribution towards reducing transport requirements, and hence to reducing the environmental burden.

Concluding event

Pilgrims are also to be encouraged to use public transport for the journey to the "Marienfeld". For this reason, the four railway stations (Horrem, Sindorf, Frechen and Bahnhof Weiden) are to be served at the highest possible train frequency (to transport roughly 22,000 pilgrims per hour); the last stretch to the Marienfeld is on foot.

Additionally, other stops on the public transport network are connected by shuttle buses to take pilgrims so close to the complex that they can also do the last kilometers on foot.

Official instructions require 50,000 parking spaces to be provided in the region for day guests who arrive in their own vehicles, ignoring appeals to the contrary. From there, believers can also reach the Vigil and Concluding Mass by shuttle buses and on foot.

The transport companies, as well as the shuttle bus operators, have also been encouraged to use as many buses as possible with environmentally friendly drive systems.

HGV transport for the construction of the Altar Hill

has been documented and can be included in the CO₂ balance sheet which will be drawn up. The same applies to the 287 "Mobile Restaurant" vehicles.

Official journeys by WYD staff

Low-consumption vehicles are available from the CAMBIO car-sharing firm for official journeys which cannot be made using public transport. In the 17 months from October 2003 to April 2005, 55 World Youth Day staff have taken up this offer; they have driven a total of 53,294 km (average of 970 km per user)

¹¹ WJT gGmbH refunds the transport companies the cost of the additional services (included in the calculation of the prices for the pilgrim packages).

¹² These locations will be used to accommodate groups which arrive with their own bus.

Catering¹³

Catering for the more than 300,000 long-term participants is a major logistical task which has been contracted to an external caterer.

Each long-term participant receives reusable cutlery with their pilgrim backpack which is made of biodegradable "biocomponents" (such as maize starch). Replacement cutlery is available if needed from the lunch distribution points. The single use eating dishes are also made of biodegradable material.

Packaging in individual portions – apart from with fruit, buns and warm meals – is unavoidable.

The disposal concept provides for refuse separation into four fractions:

- biodegradable refuse (biodegradable cutlery, serviettes, left-overs)
- plastic refuse (PP foils and containers) – "Grüner Punkt"
- paper and cardboard (esp. packaging)
- household waste

Accommodation

Approx. 2,000 shared accommodation locations and 80,000 private accommodations are available in 69 municipalities in the Cologne Archdiocese for more than 300,000 long-term participants.

Each shared accommodation location will have a representative of the World Youth Day Office (so-called "Objektbetreuer") to deal with guests and their questions. The house rules and the instructions in the "pilgrim's guidebook"¹⁴ encourage guests to respect the environment – refuse avoidance and separation, careful use of energy and water, noise avoidance. The "Objektbetreuer" have also dealt with the environmental aspects in their training.

Refuse disposal is arranged according to the respective municipal disposal systems. Labeling on the containers and symbols also enables foreign guests to separate the resources such as paper and glass.

If owners of shared accommodation charge electricity and water to the World Youth Day Office, example consumption figures will be calculated and listed in the subsequent evaluation.

¹³ see Concise draft on the organization and implementation of catering for registered pilgrims.

¹⁴ see section A 2.7 Environmentally friendly World Youth Day.

The World Youth Day Office

Paper use and consumption in the Office

is of primary relevance here: Major alterations were carried out during the "environmental management" project.

Whilst in 2004 the copiers in both office buildings exclusively used normal paper which was bleached without using chlorine, since 2005 recycled paper (mostly made of 100 % reused paper with the Blue Angel environmental label, and to a lesser extent also without a "Blue Angel" label) was used in most cases. The following quantities were used in the first five months:

Type of paper (in quantity of sheets)	January 1 – December 31, 2004	January 1 - May 31, 2005
Normal paper DIN A4 80g	870,000	65,000
Normal paper DIN A3 80g	30,000	17,500
Recycled paper DIN A4 80g	----	405,000
Percentage of recycled paper	0	80

The 80 % recycled paper rate and the speed with which the alterations were made can set a standard and serve as an example for other church and non-church administrations.¹⁵ The cost savings related to the conversion to recycled paper are a good example that ecology and economy go hand in hand.

The vast majority of the copies are sent out, only a fraction being archived. Any used paper is collected in separate bins and recycled at the expense of the WYD Office.

The pilgrim's guidebook

Roughly 250 t of paper were needed for the pilgrim's guidebook alone, with its circulation of 500,000 copies (format 105 x 210 mm) in its sections on "Liturgy" (448 pages) and on "Program and Information" (464 pages), and this in spite of being printed on thin 45g paper. With this weight of paper, the best environmentally friendly material was found in a paper with a recycled paper share of more than 50 %; the wood fibers used are from sustainably managed forests in Southern Germany.

Printing contracts for manuals, fliers and posters

Here too a gradual conversion to environmentally-friendly recycled paper can be observed:

In the first half of 2004, only paper which was bleached without using chlorine or high-quality graphic paper was used, and from July 2004 additional use was made of 100 % recycled paper. A recycled paper share of 55 % can be documented for the 2nd half of 2004 for printed matter (not including posters and stickers). This rate was almost maintained in the first five months of 2005, with a much lower commission volume.

¹⁵ A comparison with selected church facilities validated in accordance with EMAS revealed that such a high rate has seldom been achieved.

A series of posters was printed on recycled paper in autumn 2004; otherwise wood-free picture printing paper was and is being used.

Office material

Here too, preference is given to the use of environmentally friendly articles: Lever arch files, suspension pockets and files and folders are made of recycled material with the Blue Angel environmental label; the writing pads were changed from normal to recycled paper. Envelopes in smaller formats are made of normal paper, mailers (DL format) are made of recycled paper with the Blue Angel.

Electricity, heating energy and water

"Additional costs" for electricity and heating energy, for water and waste water, as well as the disposal of household waste, are paid for on a flat-rate basis.

The office premises are heated with community heating. It is not possible to individually set the heating system in building B for technical reasons. Because of the short tenancy period, it would be impossible to persuade the landlord to invest in changes to reduce consumption.

Virtually no hot water is used; if necessary, it can be prepared using appliances under the sinks in the tea kitchens and washrooms (building A) and in the washroom (building B).

There are no systems under the control of the World Youth Day Office which could cause particular environmental risks. No large amounts of disinfectant are stored, these being brought in by the external cleaning company commissioned by WJT gGmbH: This is certified in accordance with DIN EN ISO 9001: 2000. It is also responsible for disposing of the containers and of any residues.

Merchandising articles and further acquisitions

When placing orders, attention is paid to compliance with social criteria (above all no child labor) and minimum ecological standards (in particular with no health-damaging ingredients); T-shirts for volunteers, as well as for sale to the public, meet the Oeko-Tex 100 standard; one T-shirt comes from ecofair trade.¹⁶

Indirect environmental impact

With the measures described to directly reduce the environmental burdens caused by the XX World Youth Day 2005, those in charge are meeting their responsibility for God's Creation based on the Christian faith, with a view to considering all the world's people, as well as coming generations.

At the same time, those responsible regard it as an obligation and an extraordinary opportunity to promote the environmental awareness and environmentally responsible activities of young people from all over the world, and hence to show to the public the necessity and affordability of

¹⁶ Certifications are available for this.

environmental protection and sustainable management at the beginning of the "Decade of Education for Sustainable Development" (2005 – 2015) proclaimed by the United Nations. The "Communications" Department has taken on particular responsibility for this aspect.

Manuals and printed matter

In the manuals for preparation of World Youth Day in the dioceses and parishes, aspects of the Christian responsibility for the Creation were also described at an early stage, in particular in the manual entitled "Guests are a blessing".¹⁷

Various materials on Christian creation spirituality were sent to each Catholic parish in Germany at the beginning of 2005 via the MISEREOR Episcopal Aid Agency, along with the CD entitled "Materialien für die Basisarbeit".

The "Wörterbuch Schöpfungsspiritualität" by Prof. Dr. Michael Rosenberger (Linz) has been made available (in German) at www.wjt2005.de.

Press and public relations work

Once the "Guidelines" and the "2005 Environment Program" had been adopted, intensified press work began at the beginning of March 2005 on activities for an environmentally friendly organization of the XX World Youth Day¹⁸. This is being further intensified after EMAS validation.

Initial contributions have appeared in specialist periodicals¹⁹, and more are being prepared.

The "Environment" section on the official [wjt2005](http://www.wjt2005.de) homepage is being updated and expanded constantly.

The Federal Ministry for the Environment, Nature Conservation and Nuclear Safety has approved subsidies for a "Renewable energies image campaign", which is being launched on the occasion of the WYD in cooperation with the Catholic Agricultural and Rural Youth of Germany.

Various events²⁰ in the framework of WYD involve questions of environmental protection and the how to achieve sustainable development.

Environmentally relevant aspects are a continual element of media reporting. The overall commitment was presented at a press conference on June 16, 2005.

Requirements for and dialog with suppliers

Many contractors and suppliers have a quality management system certified in accordance with ISO 9001 or an environmental management system in accordance with EMAS; certificates have been consulted by the WYD Office. Referring to the concept entitled "Environmentally friendly

¹⁷ Specific information on the environmentally friendly organization of the "Days of Encounter", pp. 55-68. The manuals can be downloaded at www.wjt2005.de

¹⁸ e.g. press release "Preservation of God's Creation" of March 2, 2005; further documents at www.wjt2005.de

¹⁹ e.g. Edmund Gumpert: "Alles öko! Die Umweltcheckliste (nicht nur) für die Begegnungstage beim Weltjugendtag" (Everything Green! Environmental Checklist (Not Only) for World Youth Day) – Gemeinde creativ Vol. 2/2005, pp. 11-13.

²⁰ see WYD program. Examples: "global village" of the Catholic Agricultural and Rural Youth in Bonn; Podium "Creating Environmental Justice" on 17.8 in Cologne.

organization of the WYD", the "Guidelines" and ecological procurement criteria²¹, WYD clearly expressed its interest in environmentally friendly products and services. An extensive, ongoing dialog with suppliers cannot be achieved, given the limited timeframe of the "enterprise" World Youth Day.

Staff information and training

The staff of the World Youth Day Office have been continually informed of the status and progress of the establishment of the environmental management system via the representatives from each Department in the Environmental Steering Group, by the environmental officer, in meetings, through notices, as well as by information and tips on the intranet.

The documents for the World Youth Day Office representatives "Objektbetreuer" and caretakers in the shared accommodation also mention precautions and arrangements for environmental protection, as does the introductory documentation for the short-term volunteers.

Information sessions have also been organized in some cases, (e.g. for the staff in the Pilgrim Service Center).

Advice to church bodies

After the XX World Youth Day, a presentation will be made of the experience gathered in its environmentally friendly organization to the environmental officers in the German dioceses, and in case of interest to the environmental officers of the member churches of the Evangelical Church in Germany. These individuals will work in turn as multipliers and advisors in the areas under their responsibility.

²¹ see Environment Management Handbook Chapters 2 and 6.1, as well as other applicable documents (Annexes 2 and 9).

2005 Environment program

The environment program was made final by the Management Team on December 29, 2004.

A number of elements were already implemented in the first five months of 2005:

- 80 % of the paper used in the World Youth Day Office is recycled.
- Envelopes made of recycled paper were purchased and are being used.
- Recycled paper is used for roughly 50 % of externally-contracted printed matter.
- Information on "Environmentally friendly World Youth Day" was included in the pilgrim's guidebook (A 2.7).
- The pilgrim's guidebook was printed on environmentally friendly paper (more than 50 % recycled).
- A press release on the environmental commitment, or to be more precise on the Guidelines, was published (March 2, 2005), plus further reports, also in response to media inquiries (Kölner Stadtanzeiger...).
- An "Environment" section was set up on the www.wjt2005.de website (WYD KNOWLEDGE – Environment).
- The provision of information for the staff members of the WYD Office on environmental topics was stepped up (discussions, via the Steering Group, intranet).
- Pictograms were acquired, examined and selected, such as on signs designating nature reserves and landscape protection areas, and on refuse separation in the accommodation.
- A review revealed that at present diesel generators to generate electricity are available neither with particle filters nor for operation with biodiesel.
- Electricity supply on the Marienfeld will be from the grid.
- Drinking water pipes are being installed for water supply on the Marienfeld, with 1,600 taps at a total of 40 stations.
- Advice for ecological building for the "Marienfeld" is in motion.
- Biodegradable eating dishes and cutlery ("bioplastic") are to be used in catering for the pilgrims.
- Questions related to fire protection and emergency provision were discussed with representatives of the Cologne fire brigade, and evacuation helpers were familiarized with their tasks.
- The press conference on the environmental commitment at World Youth Day takes place on June 16, 2005.

Work areas	Goal	Measure	Responsible	When
Office organization	To increase the proportion of recycled paper in copiers and printers in buildings A and B from 0 to 60 % ; with envelopes to 80 %	Purchase 100 % recycled paper Fill the main tray in the copiers with recycled paper – changeable by hand	Human Resources/Information Technology	From January 2005
		Convert to envelopes made of recycled paper	Human Resources/Information Technology	From the next order
	To use paper sparingly	More "paperless" communication	Each staff member	ongoing

Work areas	Goal	Measure	Responsible	When
	To preserve health	Appoint safety commissioner Carry out fire alarm	Management Team – in cooperation with Human Resources/Information Technology	January 2005
Communication	To promote environmental awareness and conduct	Information in the pilgrim's guidebook on environmental conduct and protection	Communication	February 28, 05
		Press conference on the WYD's environmental commitment	Communication	June 16, 05
Communication	To be credible	Ongoing information on environmental performance and projects, as well as tips on environmental conduct in the WYD Newsletter; also deliberate publicity of necessary compromises and omissions...	Communication	from January, ongoing
Communication	To provide information and create awareness	Publicize environmental performance and information on the WYD website	Communication	Immediately ongoing
		Proposals on internationally-understandable pictograms on the topics of drinking water, refuse (separation), etc., with support of the Communication Department, pictograms included in the pilgrim's guidebook	Operations and Risk Management Communication	Feb. 2005
		Spots on environmental conduct and environmental impact at the major events for the LED walls – in the preliminary program	Communication; Liturgy; environmental officer	
		Targeted, concise environmental information to staff in PISO e. g., tips on energy saving	Environmental officer	ongoing
	To increase the proportion of recycled paper to 60 %	Prefer to select recycled paper for externally-contracted printing jobs	Communication	ongoing
		Inform suppliers of the environmental concept and conduct of WYD	Each Department	ongoing
Program	To create an awareness of environmentally sound conduct	Inspiration by the actions of the "Friends and Angels"	Youth Cultural Festival	Feb / March 05
		Accommodate responsibility for God's creation in the liturgical and spiritual offerings, in particular the Sacrament of Reconciliation, Way of the Cross, "Myrrh" in the offering of the gifts	Liturgy	August 21, 05

Work areas	Goal	Measure	Responsible	When
Technology	Emissions, to minimize risks	Examine whether basic supply via the public grid (medium voltage) incl. moving can be bought in and that emergency electricity supply is guaranteed via generators	Operations and Risk Management	March 2005
	To avoid environmental and health risks from the electricity generators by using 100 % particle filters To use fossil resources sparingly and reduce CO ₂ emissions by a minimum of 20 % of the fuels required originating from renewable raw materials	After examining because of possible additional costs oblige that electricity generators must be fitted with particle filters Machines using renewable raw materials (biodiesel or vegetable oil)	Operations and Risk Management	May 2005
	To prevent environmental risk to water, soil and air	Ecological construction advice of the large projects (e.g. when constructing paths and roads, filling and operating generators, separate waste disposal in the building and removal phase)	Operations and Risk Management	March 2005
	To campaign for the use of solar energy	Renewable energies demonstration project Solar and photovoltaic technology, as well as where appropriate parabolic solar ovens will be used with the aid of funds from of the Federal Ministry for the Environment, Nature Conservation and Nuclear Safety.	Environmental officer – with Operations and Risk Management	January 2005
	To comply with Technical Noise Protection Instruction (TA Lärm)	Examine, quantify and where appropriate reduce noise nuisance for construction phase (hearing protection) and events	Operations and Risk Management	April – Aug. 2005
	To minimize packaging and reduce CO ₂ emissions	Supply all pilgrims with drinking water on the Marienfeld via the public drinking water pipes network	Operations and Risk Management	March 2005
Technology	To provide health and fire protection	For Poller Rheinwiesen examine the possibility of taking fire extinguishing water from the Rhine if necessary	Operations and Risk Management	Aug 2005
Transport	To reduce the number of participants arriving by car	Intensive public relations work in advance	Communication	March – August 2005
	To use fossil resources sparingly: 10 % of the shuttle buses should be operated using environmentally friendly energy.	Use buses and cars with alternative drives (natural gas, vegetable oil, hybrid vehicles)	Pilgrims' Affairs – Mobility	July 2005

Work areas	Goal	Measure	Responsible	When
Catering	To promote sustainable management	Environmentally friendly packaging, containers, cutlery, etc.	Pilgrims' Affairs – Catering	March 2005
	To use resources sparingly	Use regional and fair-trade products as far as possible (examine and discuss WYD requirements) Where appropriate symbolic action in specific projects (e.g. music picnic)	Pilgrims' Affairs – Catering	March 2005
Refuse	To reduce costs; achieve high recycling rates	Easily-understandable separation system for the venues or collect refuse together for subsequent recycling	Operations and Risk Management	March 2005
	To use resources sparingly	Measures to make it easier to clean the complexes at the end	Operations and Risk Management	March 2005
Refuse	To use resources sparingly	Coordination with those responsible in the municipalities via refuse disposal in the shared accommodation	Pilgrims' Affairs – Accommodation	April 2005
		Ensure a refuse concept coordinated between those responsible for catering and accommodation for the accommodation	Pilgrims' Affairs – Accommodation	June 2005
Accommodation	Save resources	Concise information and training for the World Youth Day Office representative (Objektbetreuer) on environmental impact / ways of saving resources	Pilgrims' Affairs – Accommodation	March 31, 2005
Volunteers	Inspiration for environmental knowledge and content – not least for the foreign volunteers	Put together environmental information – short and to the point - for the brochure for volunteers;	Volunteers	March 31, 2005
		Create an awareness at the general training courses for volunteers on environmental impact and conduct;	Volunteers	August 15, 2005
		Provide detailed information and instructions through specific familiarization of the volunteers deployed in particularly environmentally relevant areas;	Volunteers / competent specialist department	August 15, 2005
		Examine training offered in petrol-saving driving training for volunteers who are to drive the bishops	Sponsoring, environmental officer	March 31, 2005

Because of the time-limited Weltjugendtag gGmbH project, the Environmental Statement will not be updated annually. The organizers will submit an environmental report at the end of 2005 with an evaluation of the environmental data of the XX World Youth Day 2005 in Cologne.

Declaration of validity

**Environmental Verifier
Dipl.-Ing. Henning von Knobelsdorff
Humboldtstraße 13
53115 Bonn**

has examined the environment management system, the environmental audit,
its results and the Environmental Statement of

**Weltjugendtag gGmbH
Gereonstraße 1 – 3
D-50670 Köln**

for compliance with Regulation (EC) No 761/2001 of the European parliament and of the council
of 19 March 2001 allowing voluntary participation by organizations in a Community eco-
management and audit scheme (EMAS) and declared the present Environmental Statement to
be valid.

There will be no update of the Environmental Statement in the two ensuing years
because of time-limited nature of the organization.

Cologne, June 9, 2005

Henning von Knobelsdorff
Environmental Verifier
D-V-0090

Contact for environmental management-related matters

Dipl.-Ing. Thomas Here, environmental officer
Tel.: 0221 – 28550 – 401
Fax: 0221 – 28550 - 8 - 401
E-Mail: thomas.here@wjt2005.de

Weltjugendtag gGmbH was advised in establishing and validating environmental management in accordance with EMAS by

KATE – Center for Ecology & Development
Blumenstr. 19, 70182 Stuttgart
Tel. 0711 – 248397 - 0
E-Mail: info@kate-stuttgart.org
www.kate-stuttgart.org

The advisors

Edmund Gumpert,
Diplom-Theologe / Diplom-Volkswirt
E-Mail: umweltbeauftragter@bistum-wuerzburg.de
Reinhard Gradmann, Stuttgart
E-Mail: gradmann.org@email.de

The drafting of the Environmental Statement was promoted by

the Ministry for the Environment and Nature Conservation, Agriculture and
Consumer Protection of the Land North-Rhine/Westphalia
Schwannstraße 3, 40476 Düsseldorf
Tel. 0211 – 4566 - 0
E-Mail: infoservice@munlv.nrw.de

Initiative Pro Recyclingpapier
c/o Burson-Marsteller,
Schützenstr. 5, 10117 Berlin
Tel.: 030 – 240 793 96
Fax: 030 – 240 793 99
E-Mail: presse@initiative-papier.de
www.papiernetz.de

Imprint

Published by:
Weltjugendtag gGmbH
Communications Department
Matthias Kopp (V.i.S.d.P.)
Gereonstraße 1-3
D – 50670 Cologne
www.wjt2005.de

Editorial team and authors:

Thomas Here (responsible), Edmund Gumpert, Reinhard Gradmann, Monika Maria Clouth

Printed on 100 % recycled paper

The eco-balance sheets of the Federal Environmental Agency for graphic papers have confirmed that using recycled paper not only conserves valuable natural habitats, but that much less water and energy is also required for its manufacture. For this reason, World Youth Day decided to print the Environmental Statement on recycled paper consisting of 100% recycled paper and bearing the Blue Angel.



What is more: Recycled paper awarded the Blue Angel not only meets the highest environmental requirements. The Blue Angel also guarantees that no poisonous chemicals or additives were used in manufacture and that the paper meets all important technical requirements.

You will find more information on the topic of recycled paper on the website of the Pro Recyclingpapier recycled paper initiative at www.papiernetz.de

