

# Environmental Statement



**Verified Report** April 2006 – December 2007



## Foreword

Responsible and effective environmental management could never be more important than it is today. Tackling climate change means that everyone has to take responsibility for their environmental impacts - that is a key reason why Kirklees Council is committed to the Eco-Management and Audit Scheme (EMAS) - the highest European standard for environmental management systems which an organisation can achieve. EMAS also improves the efficiency of services.

Last year the Council received an award from the European Commission for being at the forefront of environmental action, coming first in the EMAS UK largest organisation category. This year the Council has gained the top achievement of "Platinum" Status 2007 and has been awarded the title of "Climate Change Champion" via the Business in the Environment Index process in the Yorkshire and Humber Region.

**Cllr Martyn Bolt,**  
**Cabinet Member for Transportation and Green Issues, Kirklees Council**



## Contents

1	Introduction	1
	Environmental Awards	2
2	Kirklees Council Environment Policy	3
3	Environment Vision 2025	5
4	Environmental Management	7
5	Environmental Awareness	7
6	Energy use and Greenhouse Gas Emissions	8
	Reducing Energy Use and associated CO <sub>2</sub> emissions	9
	CO <sub>2</sub> Emission Targets	11
7	Water	11
8	Waste	11
	Council Generated Waste	12
	Household Waste and Street Cleanliness	12
9	Transport	13
	Fleet Transport	13
	Employee Travel	13
	Transport Planning - Kirklees Region	14
10	Green Network	15
11	Built Environment	16
12	Air Quality	16
13	Contractors and Suppliers	17
14	EMS Corporate Objectives, Targets and Performance Indicators	18
15	EMAS Declaration	31
	Glossary	32

# 1 Introduction

This is a full Environmental Statement for Kirklees Council covering the period April 2006 to December 2007. The council has to produce an Environmental Statement every year to comply with the requirements of the EMAS (Eco Management and Audit Scheme) Regulation, to which it is registered.

This document outlines the council's performance against its corporate environmental objectives and targets. The council's corporate environmental objectives are outlined in its Environmental Policy, which is implemented through EMAS. The council's environmental objectives aim to address the council's significant environmental impacts.

Cabinet approved the Environmental Policy in January 2007. It was reviewed in early 2008 and is expected to be approved by Cabinet in March 2008 (see section two for the amendments made).

The council's corporate targets and performance indicators are detailed in Section 15 of this document.

On the 3rd January 2007 Cabinet adopted its new four-part ambition for Kirklees along with the 2025 Kirklees Environment Vision and subsequently Full Council endorsed this on the 17th January 2007.

The council's four-part ambition being:

Kirklees is a place:

- Where diversity is a strength
- Where young people want to be
- **Seen as a beacon for green living**
- With a strong economy

The main objectives for the Green Ambition and its associated work programme are to:

1. Reduce greenhouse gas emissions for the council and district;
2. Raise environmental standards of buildings;
3. Develop a comprehensive green network across the whole borough;  
and
4. Raise environmental awareness and change public perceptions

The Green Ambition is being implemented through the councils Change Programme and EMAS. Please see section three for more details concerning this.

## 2 Kirklees Council

### Kirklees Council Structure

The council acts as community leader, determining policy and agreeing the overall community strategies and key plans for the Kirklees area. The Full Council meeting provides a regular opportunity for all of the councillors in Kirklees to meet together to discuss issues of concern and to review the work of the Overview & Scrutiny Committee and of the Cabinet.

The Cabinet is the executive decision-making body within the council, which is chaired by the Leader of the council. Each Cabinet Member has a specific portfolio of work which he/she is responsible for and must report back to the Cabinet on a regular basis on progress of work. Members of the Cabinet also work together on a collective basis to deal with a much broader range of issues.

The Executive Management Group is responsible for the corporate management of the council. Officers within the group work on a collective and/or individual basis, and each is responsible for overseeing the management and performance of the council services which are grouped into directorates.

The Officers within the Executive Management Group closely support the work of the Cabinet. The Executive Management Group meets on a monthly basis with all of the Heads of Service within the council Senior Management Group to make sure that all of the senior managers within the council have a regular opportunity to keep up to date with the latest changes and/or issues which are taking shape.

**Kirklees Council performs a large number of activities and services for the population of Kirklees which are summarised in table 1.**

Service	Activities, Services and Products
Adult Services	Providing social care to adults within the district
Asset Management	Not a service in its own right, it will be incorporated into Design & Property Services to manage the council's portfolio of buildings and land whilst developing a strategic plan for the future.
Building Services	Provides maintenance for public buildings, schools and housing association properties within the district
Catering, Caretaking and Cleaning Service	Provides over 5 million school meals a year in both primary and secondary schools throughout Kirklees, and is responsible for the cleaning inside some 360 schools, offices and public buildings across Kirklees. The service also provides a relief caretaking service, an out of hours key-holding service and training/support for school and building caretakers.
Chief Executive's Office	Provides strategic advice and support to members and officers of the council, and helps review the work of the organisation and the services it is expected to provide.
Children and Young Peoples Services	Providing social care to young people within the district
Corporate Support Service.	Exists to help the council to achieve its objectives through high and consistent standards of management of: human and financial resources; equality and diversity issues; performance and corporate programming; information and administration
Culture & Leisure	Created through the merger in October 2003 of the former Services, Leisure and Recreation Services and Cultural Services. The service aims to promote, develop and improve leisure, recreation and cultural opportunities for people who live in, work in or visit Kirklees.
Design and Property Services	Covers a wide range of activities such as the design of new service buildings, maintenance, repair, demolition and site investigation and contaminated land assessment, carried out through an integrated organisation structured into: Professional Services division, Estates Management and Client Management.

Economic Development Service	Offers a range of services to individuals, organisations, businesses and communities to promote and assist the development of a dynamic and thriving economy. These include: action to help the unemployed into work, funding for new job creation, provision of managed workspace, securing external funding for economic and regeneration initiatives and a range of marketing and development services to enable investment and to support the local tourism industry.
Environment Unit	Responsible for the development and implementation of the council's environmental policies, and oversees continuous environmental improvement through implementation of an environmental management system for all council services (EMAS).
Environmental Services	Responsible for a very wide range of activities which include refuse collection, street cleaning, recycling, waste disposal, environmental enforcement, landfill site after care, council vehicle fleet provisions and maintenance; enforcement of the Food Safety Act and certain pollution and noise control elements of the Environmental Protection Act; animal welfare; enforcement of the Health and Safety at Work Act in non manufacturing premises; asbestos service, pest control and drainage issues.
Highways and Transportation	Responsibilities include: repair, maintain and improve roads, pavements, public rights of way, street lights and signs; control traffic through a range of measures; construct measures to assist disabled persons, buses, pedestrians and cyclists and to improve road safety; provide advice on new developments; and other functions as laid down by legislation.
Human Resources & Organisational Development	Roles include: provision of recruitment, personnel, occupational health and training support services; monitoring and development of corporate HR strategies; provision of corporate information to aid workforce development; development and management of a corporate learning and development plan; and provision of training and development

IE Government ICT (Intech)	The councils In-house IT and E-Government support, and providing flexible communication and information systems, thereby supporting all council services, and helping them provide services to the people of Kirklees. Activities include supporting telephone lines, personal computer, information systems and management of technical changes to the IT infrastructure.
Learning	Provides education for about 61,990 children (at Jan 2007) in 189 schools across Kirklees. Aims to ensure that each individual is able to access an educational provision which allows her or his potential to be fully realised.
Legal Services	Carries out all the legal work required by the council, Cabinet, its Committees and other departments and services. The service has the aim of ensuring that the council: operates effectively within the law; meets its statutory responsibilities; and uses its legal powers effectively to implement council policies for the benefit of Kirklees residents.
Partnerships and Procurement Service	Works actively with other council services and the private sector to develop new initiatives to achieve service improvements, best practice procurement and sustainable regeneration. Markets have now been incorporated into this service.
Planning Services	Responsible for: guiding future development; Development Control; Building Control, Licensing, Conservation of the built heritage and natural environment; and Improvements to the Public Realm - supplementing council resources by securing funding from external agencies so that improvements to our environment may be implemented.
Policy and Governance	The Policy and Governance Service brings together a range of functions relating to the development of and support to the democratic and electoral processes of the council, support to the elected councillors, together with corporate policy, corporate research and development of strategic partnerships.

Revenues & Benefits	Responsible for: Billing and recovery of Council Tax and Business Rates; processing of claims and payment of Housing and Council Tax Benefit; cashiering through a network of cash and information offices; and income processing and reconciliation.
Safer, Stronger Communities	Responsible for helping to support and develop communities in Kirklees. The aim is to work together to improve the quality of life for people living or working in the area. Incorporates Neighbourhood Renewal, Benefits advice and community work, as well as working towards making communities safer.
Strategic Finance	Aims to ensure the proper financial management and Service administration of the council, meeting statutory requirements and helping to achieve council policy. Provides financial services to assist, advise, educate, enable, formulate and enforce regulations to ensure that the council provides effective, economic and efficient services.
Strategic Housing Services	The delivery of Housing Services is divided between Strategic Housing Services and Kirklees Neighbourhood Housing Ltd (an arms length management organisation). Kirklees Strategic Housing Services own the houses and have strategic responsibility of the service.

## Scope of EMAS

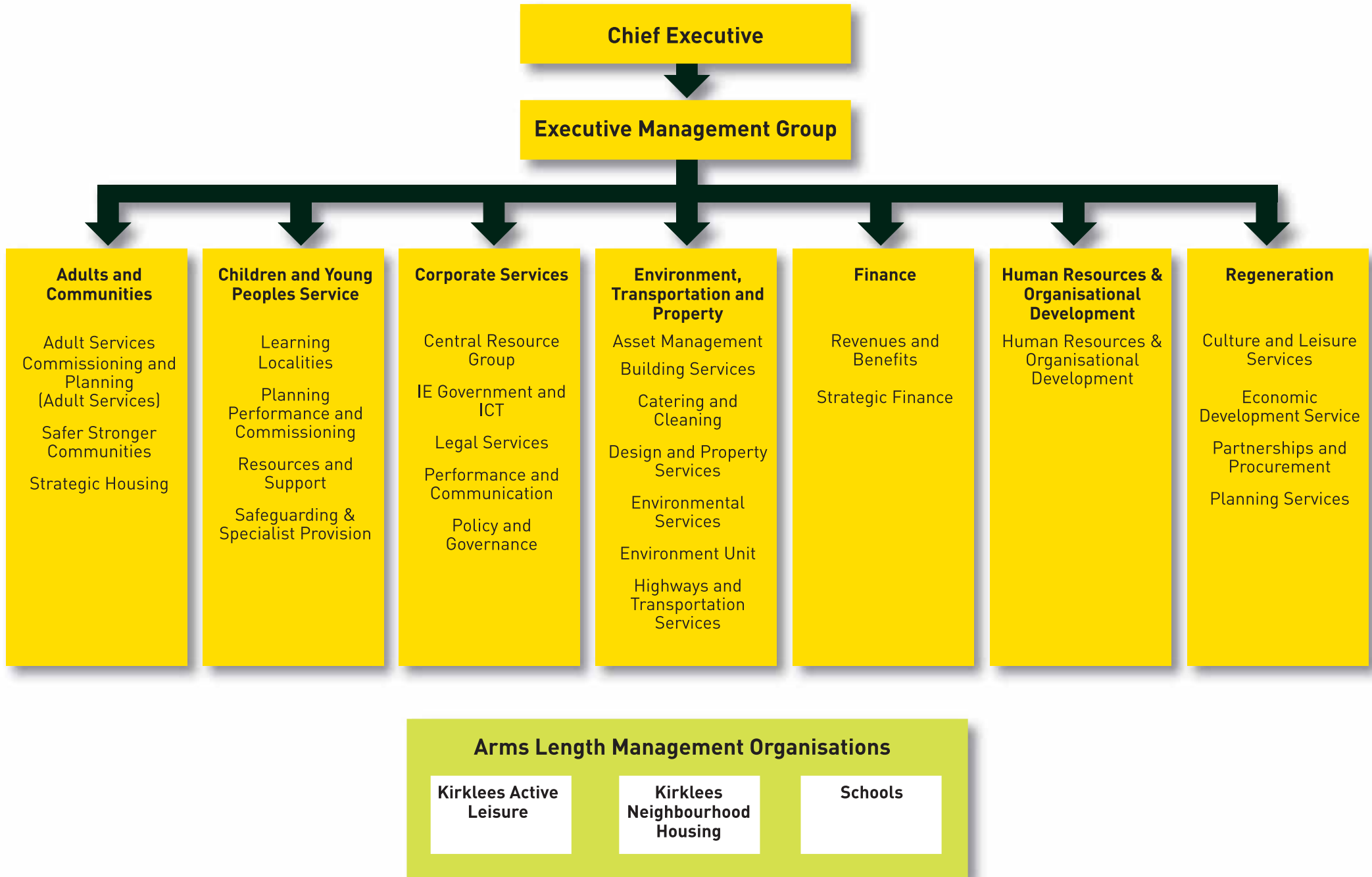
Each of the services within Kirklees Council falls under the scope of EMAS; each has an EMAS lead officer who is responsible for ensuring their service meets the requirements of the scheme.

Kirklees Council has three arms length management organisations (ALMOs); Kirklees Neighbourhood Housing (KNH), Kirklees Active Leisure (KAL) and Kirklees schools.

KNH is a not for profit company which is responsible for managing council owned homes on behalf of Kirklees Council. The organisation came into existence on 1 April 2002. It is a company wholly owned by the council but managed by a board of directors rather than a council committee. The company manages approximately 24,000 properties and provides all the landlord services to these properties.

KAL is a charitable trust responsible for the management, operation and development of 10 sports centres and swimming pools in Kirklees. The trust also manages the Stadium Health and Fitness Club and Spenborough Athletics Track. Although a completely independent body making its own decisions at meetings of the Board of Trustees, the council and the Trust are working together in partnership.

Kirklees schools are not managed by the Kirklees Council Education Service and as a result do not fall under the scope of EMAS.



### 3 Kirklees Council Environment Policy

The council's Environment Policy provides a framework for its approach to the protection and enhancement of the environment at a local to a global scale. Cabinet first adopted an Environment Policy in 1999. It is regularly revised to reflect the priorities for Kirklees Council and to ensure the ongoing effectiveness of the EMAS system. The Environment Policy for Kirklees Council is detailed below:

Kirklees Council recognises that its operations have an impact on the environment. In working towards a more sustainable future we are committed to minimising our adverse environmental impacts by reducing pollution and tackling climate change, while enhancing positive environmental impacts to improve the quality of life for the people of Kirklees. The council will achieve these commitments by maintaining an environmental management system - EMAS (Eco-Management and Audit Scheme) - to continuously monitor progress against this Environment Policy, and to improve our environmental performance and prevent pollution.

Specific areas that this policy tackles include: increasing energy and water efficiency and the amount of renewable energy generated; minimising the environmental impacts of travel; a co-ordinated programme of enhancing green spaces for wildlife and people; raising environmental awareness; reducing, re-using and recycling waste; encouraging a more sustainable built environment; and supporting community groups and businesses in local environmental action. The global problem of climate change makes our activity in these areas all the more imperative.

The council will encourage and enable all employees to do what they can to translate this Policy into practice. We want to set a good example to other organisations and will work with contractors and suppliers to improve environmental standards. The council will also co-ordinate action in the wider community and continue with national and international working to benefit the Kirklees District. The council will integrate this care for the environment into all areas of council activity and into all policies, strategies and decisions. This Policy supports the council's Green Ambition, 2025 Kirklees Environment Vision and the council's Vision objectives for "A diverse and confident community, with access for all to: high quality services, good customer care, a thriving economy and a healthy, safe and sustainable environment". The 2025 Kirklees Environment Vision and the council's Vision reflect the aspirations of the Community Strategy and the targets in the Local Area Agreement for Kirklees.

### Environmental Management

- EM1** Maintain an environmental management system to identify and manage the council's environmental impacts
- EM2** Carry out a regular evaluation of the council's environmental performance
- EM3** Ensure compliance with all relevant environmental legislation and other requirements to which the council subscribes
- EM4** Carry out a regular review of the council's environmental policy to ensure its ongoing effectiveness
- EM5** Minimise the risk of possible environmental damage from incidents and emergencies
- EM6** Conduct sustainability appraisals on significant new policies and projects

### Environmental Awareness

- EA1** Educate, train and motivate staff to conduct their activities in an environmentally responsible manner
- EA2** Raise the environmental awareness of the people of Kirklees, particularly children and young people
- EA3** Encourage and actively support local communities to undertake local environmental projects

### Energy and Greenhouse Gas Emissions

- EG1** Implement actions to achieve reductions in greenhouse gas emissions within council operations
- EG2** Facilitate the reduction of greenhouse gas emissions within the Kirklees area
- EG3** Increase the amount of renewable energy generated by the council and its arms length management organisations
- EG4** Increase the proportion of energy from renewable sources purchased for council managed buildings and street lighting
- EG5** Encourage and support the greater use of renewable energy within the Kirklees District

## Water

- WT1** Implement actions to reduce, reuse and recycle water within the council and arms length management organisations
- WT2** Encourage and support actions to reduce reuse and recycle water within the Kirklees District

## Waste

- WA1** Implement actions to reduce, reuse, recycle and recover value from waste within council operations
- WA2** Progress towards greater waste reduction and higher reuse, recycling, composting and recovery of value from waste within the Kirklees District, thus reducing dependence on landfilling
- WA3** Improve street cleanliness by reducing litter, graffiti and fly-tipping in the Kirklees District

## Transport

- TP1** Implement actions, which seek to minimise the environmental impact of the council's fleet vehicles and staff journeys to, from and at work
- TP2** Encourage cycling, walking and other objectives within the regional and district Transport Plans

## Green Network

- GN1** Manage land under council control within the Kirklees District for the benefit of wildlife, especially the Biodiversity Action Plan priority species and habitats
- GN2** Actively protect and enhance the natural environment and support others in doing so
- GN3** Work with land managers to effectively manage and improve accessibility to open country and the public rights of way network (footpaths, bridleways and byways)
- GN4** Improve the quality and accessibility of parks, open spaces, greenways and green corridors across the Kirklees District

## Built Environment

- BN1** Encourage sustainable design and management practices in council and district-wide new builds, renovations and conversions

## Air Quality

- AQ1** Develop a Kirklees Air Quality Strategy. This will include air quality related actions, targets and good practices including those promoted by other Kirklees policies and initiatives, in order to maintain air quality where it is good and improve air quality where it is poor
- AQ2** Work in partnership with other services to produce a policy framework as part of the Air Quality Strategy which will inform decision making in the areas of development control and regeneration

## Contractors and Suppliers

- CS1** Implement initiatives, which seek to minimise the environmental impact of all council purchases of goods and services
- CS2** Work in partnership with our suppliers and contractors to minimise the environmental impacts of their goods and services

## Environmental Policy Review

There have been some minor amendments made to the policy adopted in January 2007. Climate Change Mitigation and Adaptation has now been included as a corporate objective, which incorporates the previous Energy and Greenhouse Gas Emissions objectives. This has been created as it is now a corporate priority for services to set climate change mitigation and adaptation targets within their Service Performance Plans.

The objective to develop an air quality strategy has been removed from the Air Quality section as it has been achieved in 2007.

Finally, the Contracts and Suppliers section has been renamed Procurement, and a sustainable procurement objective has been included. This will encourage the council to consider social, economic and environmental issues in its procurement decisions.

## 4 Green Ambition

The Green Ambition is a clear statement from the council to its partners and the residents of Kirklees that it takes the environment and climate change seriously. The Green Ambition has become more embedded throughout the council within 2007, and has begun to drive change to deliver greater sustainability for Kirklees and to help deliver the Environment Vision 2025.

Kirklees Council's Green Ambition is:

***“To be a beacon of green living in the UK and at a European level by enabling the council to continue to place its environment work at the forefront of action in the UK and to mainstream sustainability into decision-making”***

The main objectives for the Green Ambition and its associated work programme are to:

1. Reduce greenhouse gas emissions for the council and district;
2. Raise environmental standards of buildings;
3. Develop a comprehensive green network across the whole borough;  
and
4. Raise environmental awareness and change public perceptions

The work programme is being delivered through the councils change programme and is divided into two main work areas:

### **1. Internal Change Agenda – A Low Carbon Council**

The internal change agenda includes building on the EMAS system by getting services to understand and act on their carbon impacts as well as adapting to climate change. It brings together a cross section of projects such as: carbon impacts and reporting, adaptation/mitigation plans and energy management and building design standards. The internal change agenda also links to the proposed new indicators for the Local Area Agreement “CO<sub>2</sub> reduction from LA operations” and “Adapting to Climate Change”.

### **2. External Change Agenda – A Low Carbon Kirklees**

The external change agenda includes driving down district carbon emissions through a programme of awareness raising about climate change and other environmental issues, and encouraging more

sustainable public behaviour. It also encompasses the delivery of Warm Zones to all households across Kirklees, increased renewable energy generation, the Low Carbon Local Development Framework and the co-ordination of partnership carbon emissions reductions. The external change agenda links to the proposed new indicator for the Local Area Agreement “per capita reduction in CO<sub>2</sub> emissions in the LA area”.

In 2007 the ‘Green Ambition Board’ was established to oversee the implementation and delivery of the Green Ambition. The Green Ambition Board includes members across a range of council services: Design and Property Services, Strategic Asset Management, Environment Unit, Environmental Services, Highways and Transportation, Economic Development, Strategic Finance, Planning Services and Adult and Communities Service. Beneath the Green Ambition Board six further boards have now been established to oversee delivery of the main Green Ambition work areas: Warm Zone, Green Network, Energy and Building Standards, Communication and Monitoring, Transport and Partnership and Carbon Reduction.

## Environmental Awards

The council received a number of awards in this reporting period.

- The Prince Michael of Kent International Road Safety award for the Kirklees Enhanced Pass Plus course as an outstanding contribution to improving road safety.
- Sustrans in partnership with Kirklees Council won the III European Greenway Award for accessibility & mobility for the Kirklees Greenway Network, made up of four National Cycle Network routes; Birkby-Bradley Greenway, Spen Valley Greenway, Spen Ringway and Calder Valley Greenway stretching for 15 miles from Bradford to Huddersfield via Dewsbury.
- Local Heroes Ministerial Reception. Sean Westerby, Emergency Planning Team Manager and Laila Ahmed, Community Support Worker received recognition for their courage, ingenuity and community spirit during and in the aftermath of the flooding in June and July 2007.
- A 'Gold' Green Apple Award for the National Environmental Management Systems Networking Group in recognition of how Kirklees Council is working to raise the profile of Environmental Management in other Local Authorities in England.



Ashden Awards 2006

## 5 Environmental Management

Kirklees Council recognises that it has an impact on the environment through the delivery of its services directly and indirectly through its procurement processes, use of suppliers and contractors and policy development.

A brief summary of the council's significant environmental aspects and impacts is provided in table 2 below (please note this is not a fully comprehensive list).

<b>Table 2: Environmental Aspects</b>	<b>Environmental Aspects and Impacts Environmental Impacts</b>
Potential to raise environmental awareness of Kirklees Council employees and Kirklees residents	Possible greener behaviours
Use of energy, transport and water leading to emissions of green house gases	Climate change
Use of water	Depletion of resources
Emissions to water	Potential water pollution
Waste generation and disposal via council activities	Environmental impacts associated with waste disposal
Municipal waste strategy development and implementation for the Kirklees district	Environmental impacts associated with waste disposal/recovery/recycling
Local transport planning	Climate change and local air quality
Management of land and open spaces	Potential to increase and protect biodiversity
Planning policy development and building design policies	Climate change
Local air quality strategy development	Poor/good local air quality.
Procurement	Climate change
Use of contractors and suppliers	Climate change and local environmental impacts
Environmental/Climate change policy development/mitigation work	Climate change mitigation/adaptation

Kirklees Council's EMAS system has been developed corporately by the council's Environment Unit to comply with the EMAS Regulation. In implementing EMAS, each service has taken responsibility for their EMAS system by nominating an EMAS Lead Officer who manages the system in their service area. They are supported by Environmental Cascade Officers (ECO's) whose main role is to raise environmental awareness and encourage greener behaviors in the office environment.

Kirklees Council services have continued to review their impacts on the environment and establish objectives and targets for improvement. As previously mentioned, council services are now in the process of establishing climate change mitigation and adaptation objectives and targets to re-emphasize the council commitment to reducing its CO<sub>2</sub> emissions. Performance against these targets will be monitored on an annual basis through the EMAS system.

The council's environmental performance is also monitored through EMAS via management reviews in each service. The effectiveness of EMAS is assessed and performance against targets reviewed. The council also has number of EMAS performance indicators which include environmentally related Local Area Agreement targets and Best Value Performance Indicators. Performance for this reporting period can be found in section 15 of this report.

Changes to the EMAS indicators will be made in the next EMAS public statement due to a new local government performance framework. The Local Government White Paper (published in October 2006), Strong and Prosperous Communities, set out the new performance framework for local government. The backbone of the new framework is 198 indicators covering all Government's priorities for local delivery. Every local authority leading a Local Area Agreement (LAA) will have to start reporting against the whole set of indicators and agree up to about 35 of them as 'local improvement targets' to form the basis of their LAA. The indicators and targets that are chosen for each LAA will differ from place to place. Local government will be required to report their performance against these indicators from April 2008.

The council continues to keep up to date with environmental legislation via the Groundwork/Kirklees legal register update service. A number of legal compliance audits have also taken place with selected council services according to the internal audit schedule.

Two Non-Compliance Notices were served on Kirklees Council in 2007, both relate to the Lower Spenn Valley Landfill Site (Waste Management Licence number EAWML 61058). In 2006 the Environment Agency notified the council that it was intending to modify the existing licence conditions for the Northeast quadrant of the Lower Spenn Valley former landfill site. The reason was to

ensure that landfill gas was collected from the site and flared, rather than being allowed to naturally vent to the atmosphere as had been the case since the site closed in the late nineties. The council were given six months to implement all of the new conditions. This time scale proved to be insufficient and as a result the conditions requiring the submission of a Landfill Gas Risk Assessment and Landfill Gas Management Plan were not met until late 2007 so the non compliance notices were served. The council took action to comply with the notices by the deadlines specified in the notices by supplying the Environment Agency with a Landfill Gas Risk Assessment and a Landfill Gas Management Plan for the site. The council have now put plans in place to start flaring the landfill gas by April 2008.

## 6 Environmental Awareness

Kirklees Council believes that there are great opportunities to raise the environmental awareness of council employees and Kirklees residents. There have been many successful, high profile awareness raising events and activities in this reporting period. The work has targeted council employees, school children, and the general public. During 2007, there were 45 environmental awareness-raising events delivered for Kirklees residents.

Internally, the council celebrated the 10th Anniversary of the ECO (Environmental Cascade Officer) Network. The ECO Network continues to grow and spread the environmental message to green the council office environment. A new "Green Employee Network", has also been established to complement the ECO network, which encourages employees to get involved in the green agenda on an individual level.

In 2006 the council was awarded funding from DEFRA to share its knowledge and experience of environmental management systems with other Local Authorities in England. By the end of 2007 the network covered all government office regions. There are now over 250 public sector bodies participating in the network, including Local Authorities, Public Transport organisations, Government Offices, Regional Development Agencies, the NHS, the Fire Service and the Police. The projects first year success was celebrated at a special event in Leeds Town Hall in July 2007.

## 7 Energy Use and Greenhouse Gas Emissions

Buildings energy emissions continue to be Kirklees Council's greatest impact in terms of carbon dioxide (CO<sub>2</sub>) emissions. In the last reporting year, energy consumption by buildings actually increased, yet emissions reduced. This reduction in emissions was due to the council purchasing more renewable energy. In this reporting period energy consumption has significantly reduced with an overall reduction of 5.35 million kWh of energy (9.7%).

Despite the reduction in energy consumption, the cost of energy is still continuing to rise with an overall energy bill of approximately £1.9 million in 2006 compared to £1.6 million in 2005. Increasing the energy efficiency of the council will not only reduce the council's environmental impact, but it will also reduce the impact of rising energy costs.

**Table 3: Energy Use in Council Buildings**

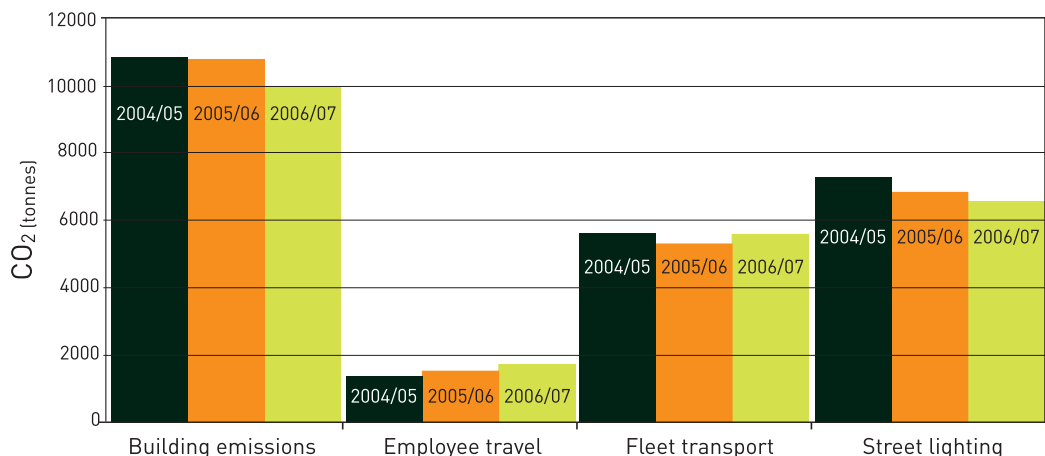
	2004	2005	2006
Gas (Million kWh)	35.92	34.16	32.24
Coal (Million kWh)	0.47	0.70	0.26
Oil (Million kWh)	2.79	3.91	1.68
Electricity (Million kWh)	15.95	16.47	15.70
Total energy use (Million kWh)	55.1	55.24	49.89
Total Cost	£1,420,662	£1,679,868	£1,914,782
CO <sub>2</sub> Emissions (Tonnes)	10,899	10,840	10,047

### Notes

- The data covers all council services under the EMAS scope. Therefore schools, Kirklees Active Leisure and Kirklees Neighbourhood Housing are excluded.
- Electricity is made up of 'brown' (non-renewable sources) and 'green' (renewable) – emissions are calculated for the former only.
- CO<sub>2</sub> emission co-efficient for each fuel type supplied by DEFRA
- Figures rounded to one (kWh) or two (total) decimal places

**Figure 1: Changes in CO2 Emissions since 2004/05-2006/07**

Figure 1: Changes in CO<sub>2</sub> emissions since 2004/05-2005/06



## Reducing Energy Use and Associated CO<sub>2</sub> Emissions

The council has continued to implement schemes in order to reduce energy and CO<sub>2</sub> emissions

### Street Lighting and Signage

#### Energy Consumption

During 2006-2007 street lighting, signage and traffic lights consumed 22.48 million kWh of electricity - 3% less than in 2005-2006. This energy continues to be sourced from a good quality combined heat and power station (GQCHP which is more efficient and releases less CO<sub>2</sub> than electricity from a regular coal or gas fuelled power station. Due to new guidelines from DEFRA the council has also improved its monitoring methodology in this area) and therefore we have revised the CO<sub>2</sub> emissions for both 2004-2005 and 2005-2006 to account for this.

#### Energy Initiatives

A feasibility study is being undertaken to develop a scheme whereby a system of solar photovoltaic (PV) panels on street lights are linked into the national grid so that energy produced from the PV panels during daylight hours will off set the power required to light them at night.

A pilot study in an area of Kirklees is also underway to dim street lighting by 50% after rush hour in order to reduce energy consumption by 35% with no

noticeable reduction of light intensity. It is hoped that this scheme will be rolled out where possible if successful. Also, only energy efficient street lighting installations are being purchased.

### Council Wide Initiative: Energy and Water Conservation Fund

The councils Energy & Water Conservation Loan Fund was set up to help make improvements to the efficiency of council buildings. Council services can apply for funding to improve the lighting, heating or water use in their buildings and schools. Last year £56,136 was allocated to projects such as new lighting in schools, automatic lighting controls in day care centres and cavity wall insulation in community centres. The grants allocated in 2006-2007 will potentially contribute a further annual saving of 64 tonnes of CO<sub>2</sub> which helps the council work towards achieving its overall target of reducing CO<sub>2</sub> emissions by 30% by 2020.

### School Climate Champions

The Energy and Water Conservation Fund continues to pay for the 'School Climate Champions' project. It offers students in 10 Kirklees schools the chance to learn about energy and the impacts its production and consumption have on the environment. Pupils carried out an energy audit of their school building and recommended improvements for action, these improvements can then put in place with funding from the Energy and Water Conservation Fund.



*Pupils carried out an energy audit of their school building*

## Emissions Trading Scheme

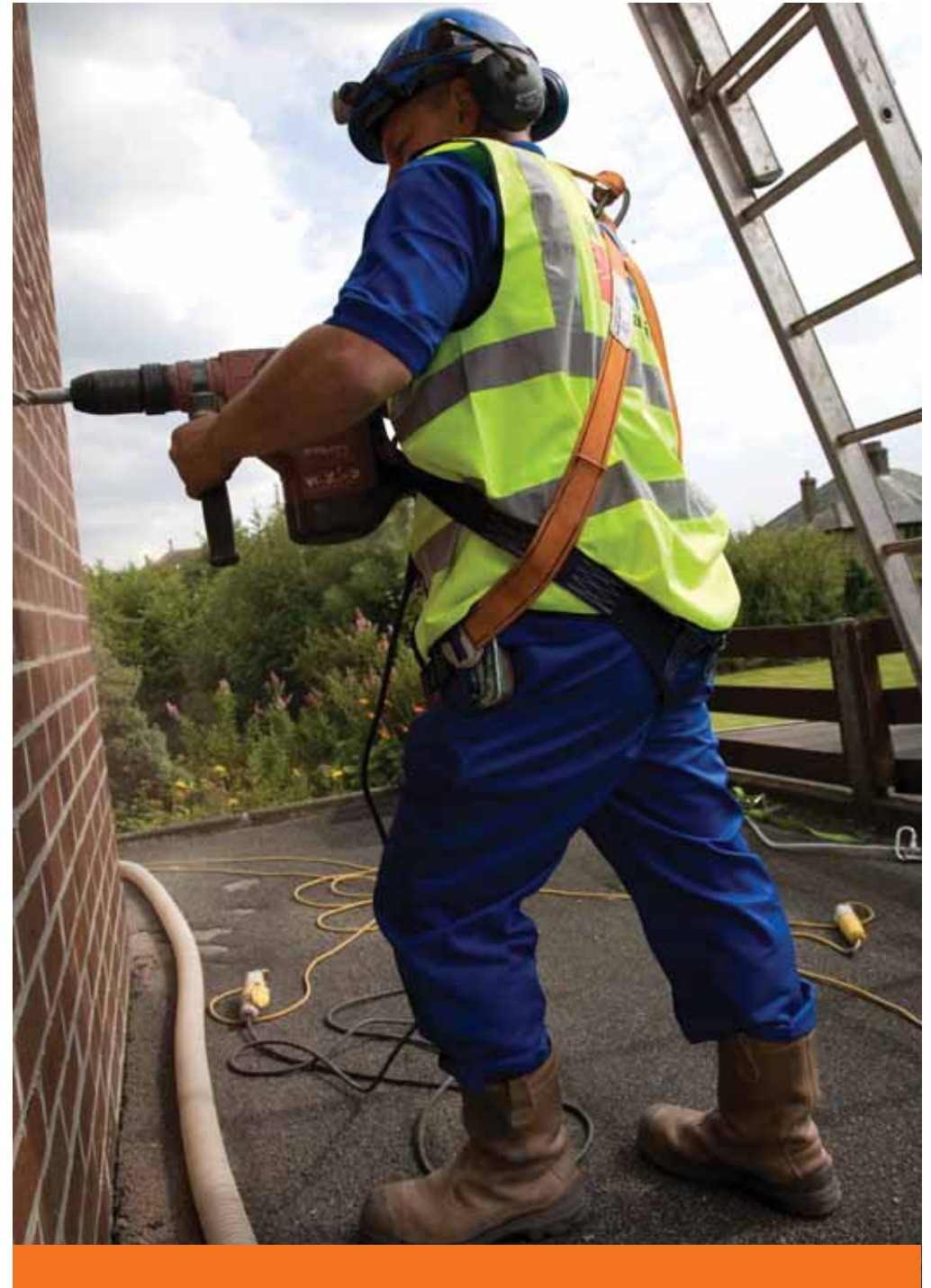
The council signed up to the UK Emissions Trading Scheme and began trading in 2002. This commitment was to reduce CO<sub>2</sub> emissions by 1,000 tonnes by the end of 2006 covering 254 council buildings. The successful verification of emissions trading data over the past five years provided funding of £53,049 from DEFRA. This was used to continue the work of reducing both energy and CO<sub>2</sub> emissions throughout the council. In 2006-2007, Kirklees Council did not have to purchase any Carbon allocations as the council had purchased in previous years to meet the CO<sub>2</sub> reduction targets set for 2006. Kirklees Council was the only government authority to take part in the UK emissions trading scheme.

## Warm Zone

Kirklees Council has both a national government and local area agreement (LAA) target to address fuel poverty. Currently the council estimates in the region of 32,000 - 45,000 homes in Kirklees are in fuel poverty. Kirklees has a strong record of targeted grant support to vulnerable households for energy efficiency and heating measures. This involves collaboration with Primary Care Trusts and private utility companies to ensure these measures get to the people who need them most.

This work has been given a major boost by being brought together as a three year delivery programme - "Warm Zone" - which started in February 2007. Kirklees Warm Zone will tackle fuel poverty and climate change by providing practical energy efficiency support to householders who will be able to receive free physical measures such as cavity wall and loft insulation and referrals to partner organisations. Warm Zone will reach every householder in Kirklees regardless of their age or income. The three year funded programme will be the main focal point of delivery of practical home energy efficiency measures to systematically tackle the current housing stock.

Government reporting requires us to report on carbon savings met through the Warm Zone programme. After around three months and nearly 1700 measures being completed, the total annual carbon saving is 170 tonnes which equates to a total lifetime saving of almost 6,000 tonnes of carbon. This is expected to reach much higher totals over the three year programme.



## Renewable Energy Purchasing

In this reporting period 18.1% of the energy purchased by 52 premises within the scope of EMAS is produced by renewable (green) sources on 'green' tariffs (57.6% of electricity consumed).

## Renewable Energy Generation

### SunCities

SunCities is a leading European funded solar energy project, which aimed to install approximately 3.05MWp (megawatt-peak) of solar electricity on 2,000 homes in Germany, the Netherlands and in Kirklees. This five year project was completed in February 2006 and resulted in 351kWp (kilowatt-peak) of electricity installed on homes in Kirklees. The following projects were completed in 2006/07 as an extension to the SunCities project.

### Primrose Hill Solar Village

Yorkshire Housing's new build properties were completed in September 2006. The new homes have been built to high environmental standards and achieved an EcoHomes rating of Very Good. Solar electricity panels (55kWp of roof integrated systems) and solar thermal systems have been incorporated on 31 new houses and a new building containing 32 flats. The design of the homes and the solar panels will help to reduce tenants' fuel bills as well as carbon emissions.

### Ashden Awards

In June 2006 Kirklees Council was recognised by the prestigious Ashden Awards for excellent local sustainable energy projects. The awards were presented by David Cameron, Leader of the Opposition and HRH Prince Charles. Funding received from the awards has allowed a training programme based on the SunCities experience to be developed for housing authorities.

### Deighton Centre

Two 15kW wind turbines were installed at the Deighton Centre in May 2006 and still continued to contribute to reducing the electricity bills and carbon emissions at the Centre. Following a period of non-operation the wind turbines are now fully operational.

### Civic Centre 3

The first Local Authority roof mounted wind turbines in the UK were installed on the roof of Civic Centre 3 in July 2006. The two 6kW wind turbines were the



Primrose Hill Solar Village

final phase of the European project Zero Emissions Neighbourhood (ZEN). ZEN aimed to showcase renewable energy technologies that complement with each other, solar electricity and solar thermal panels were installed on Civic Centre III in 2005. The high profile town centre location of the wind turbines is a clear statement of the council's commitment to address climate change.

### District Heating

A feasibility study commenced to investigate the opportunities for large scale district heating in Huddersfield. This work will be taken forward in 2008.

### Hydroelectric

A feasibility study commenced to investigate the opportunities for power generation using a number of weirs across the district. This work will be taken forward in 2008.

### Future plans

- Work will continue through 2008 to take the district heating and hydro schemes forward with partner organisations.
- Biomass strategy – a biomass strategy will be developed to support the supply of biomass to Kirklees Council new build projects through improved management of Kirklees Council woodlands.
- Sustainable Construction Training Centre – feasibility work assessing the opportunities for a training centre in the Colne Valley will be taken forward through partnership development and securing funding.
- Installation of 6kWp solar Pv on the new Media Centre development. This building has been built to a high environmental standard (BREEAM - very good rating).

## 8. Water

Water consumption is an essential element of Kirklees Councils continued operation, whether that may be ensuring the comfort of residents in care homes or cleaning the council's fleet of vehicles.

The environmental impact of water use does not just relate to the consumption of water and potential contamination or wasted water through misuse; a major impact of water consumption is the energy required to both supply and treat the water. Using information provided by Yorkshire Water Plc

it is possible to calculate the amount of CO<sub>2</sub> emitted in the supply and treatment of the water consumed by Kirklees Council. In this reporting period water consumption has decreased in Kirklees Council services under EMAS by 6.5%. This has also resulted in the cost of the water to the council reducing by approximately 8% (£27,282).

**Table 4: Water used in Council operations**

	2004	2005	2006
Water (m3)	180,016	174,402	163,037
Energy Use (Million kWh)	0.25	0.24	0.23
Total Cost	£335,713	£333,259	£305,977
CO <sub>2</sub> Emissions (tonnes)	107	104	100

Notes

- The data covers all council services under the EMAS scope; therefore Schools; Kirklees Active Leisure and Kirklees Neighbourhood Housing are excluded.
- Calculation of energy use for water processing based on Kelda Group Plc (Yorkshire Water) Sustainability Indicators.
- CO<sub>2</sub> emission co-efficient supplied by DEFRA
- All tonnages rounded to nearest whole number

## 9. Waste

### Council Generated Waste

The council continues to try to establish cost effective recycling / reuse schemes for council generated waste. It also tries to ensure that the amounts recycled and reused can be monitored. This has been possible for the schemes detailed below in Table 3.

**Table 5: Waste Destinations**

Cardboard	18.3 tonnes of cardboard was collected by Environmental Services and then sent for recycling with M&B haulage based in Dewsbury.
Scrap Metal	All scrap metal collected across the council was sent to Morley Waste Traders in Huddersfield for recycling.

Plastic Cups	Plastic cups from water dispensers are collected by Bronte Water and are then forwarded for recycling. At present there is no means of recording the amount of plastic cups returned from Kirklees Council. All water dispensing bottles are returned to Bronte Water for reuse.
Office paper	<p>The office paper recycling scheme is at present the only recycling collection available to every council building. Paper from council offices sent for recycling through office paper scheme 2006/07 was 99 tonnes.</p> <p>The total tonnage sent for recycling by all council services under EMAS and Arms Length Organisations for 2006/7 was 234 tonnes. In the previous reporting period (2005/06) the total tonnage of paper sent for recycling was 241 tonnes.</p>
Mobile phones & toner cartridges	2865 printer cartridges and 25 mobile phones were sent for recycling during 2006/07. The Kirkwood Hospice receives a small payment for each item sent for recycling.
Fluorescent tubes	25,600 light bulbs were sent for recycling at Mercury Recycling Ltd. from Building Services and Street Lighting and Signage (Highways & Transportation Service).
IT equipment	Kirklees Council continued its arrangement with Extended Life Computers Ltd (Halifax) to resell and reuse council computers, which have reached the end of their life within the council. Due to the Waste Electrical and Electronic Equipment (WEEE) Regulations 2006, Kirklees Council is in the process of developing a new system of disposing all IT and electronic equipment through an approved company. During 2006/07 Kirklees Council sent 229 PC base units, 47 Laptops and numerous other items for reuse and resale.

A new scheme to collect dry recyclables from council buildings was trialled during 2007 at Civic Centre I in Huddersfield. The aim is to roll out this scheme to a number of other major council buildings in Huddersfield during 2008.

The council has set itself a target to recycle 50% of all waste from council offices by 2010/11; to achieve this target the council needed to introduce mixed dry recyclable collections from office buildings to complement the existing recycling schemes, and the trial is the first stage of this. (Table 5)

A waste composition analysis of the general waste from 5 major council office buildings in Huddersfield was undertaken in February 2007. It is estimated that approximately 20% of the general waste consisted of paper that could be recycled through the Office Paper Recycling Scheme. Promotion of the Office Paper Recycling Scheme has now increased and by providing mixed dry recyclable collections to all these offices the aim is to increase the proportion of waste that is recycled.

## Household Waste and Street Cleanliness

### Household Waste Collection and Street Cleanliness

Following the success in 2006 of a pilot scheme to increase the recycling and composting of household waste, Cabinet approved in 2007 the roll-out of the scheme, now named the Recycling Plan for Kirklees, across the whole district.

The Recycling Plan is being implemented over a three year period and comprises of:

- An increased frequency of dry recyclable collections (from monthly to two weekly alternating with residual waste collections) and the provision of dry recyclable collections to non-wheeled bin properties.
- Kerbside glass collections for the majority of properties in Kirklees.
- An enhanced garden waste collection service across the whole district to increase composting (free and on demand), the promotion of home composting including reduced price mail order home composters and a ban on garden waste in all bins.

In 2007 an additional 39,000 households were brought onto alternate week collections and 22,000 onto glass collections. There are now 45,000 households with alternate week collections and 70,000 households with glass collections.

Approval was also given to provide green bins for recycling to all schools alongside the roll-out of the Recycling Plan. 16 schools were supplied with green bins in 2007. In 2008 green bins will also start to be offered to council offices.

The council's Environmental Enforcement Team served 67 fixed penalty notices for littering in 2007 and continued to investigate incidences of fly tipping and accumulations of waste on land, taking prosecutions where appropriate. For the year 2006/7 the council was in the top quartile (all England and Metropolitan areas) for the Best Value Performance Indicator for street cleanliness.

## 10. Transport

### Fleet Transport

CO<sub>2</sub> emissions from the councils fleet transport increased by 6% in 2006-2007 to 5,659 tonnes. This increase can be mainly attributed to the inclusion (during this reporting period) of the emissions from all vehicles hired by Kirklees Council services for fleet transportation. Fleet vehicle emissions account for 31% of Kirklees Councils total CO<sub>2</sub> emissions and as such it is important that continued efforts are made to reduce the fuel consumption and consequently the emissions from its fleet.

	2004/05	2005/06	2006/07
Diesel (Litres)	1,832,762	1,790,316	1,919,726
Petrol (Litres)	71,937	74,222	76,834
Gas Oil (Litres)	198,397	204,939	203,139
LPG (Litres)	46,136	34,471	28,462
Total Cost (£)	£1,756,607	£1,742,579	£1,688,049
CO <sub>2</sub> Emissions (Tonnes)	5,679	5,339	5,6593

Kirklees Council continues to use a 5% biodiesel mix in the fuel for all fleet diesel vehicles; this reduces the emissions by a potential 3% or 146 tonnes of CO<sub>2</sub>.

### Employee Travel

Despite the total employee travel mileage (claimed) slightly decreasing, the total CO<sub>2</sub> emissions have increased by 15% during 2006-07. This is due to new guidance from DEFRA providing a more accurate calculation method for vehicle emissions in private ownership.

	2004/05	2005/06	2006/07
Mileage	4,670,613	5,570,688	5,515,284
Cost	£2,011,176	£2,453,114	£2,530,349
CO <sub>2</sub> Emissions (Tonnes)	1,438	1,593	1,839

Emissions from mileage claimed by Kirklees Council employees have been increasing year on year. Whilst it is important for the council to be effective in its delivery of services, often through the use of private vehicles, council services need to identify where journeys may have been avoidable, could have been made by public transport or could have been achieved through car-sharing in order to reduce both the financial cost and the emissions emitted within the journey.

Under the councils present system it is not possible to record journeys that are made on public transport when delivering council services. Therefore CO<sub>2</sub> emissions from public transport have not been included in the employee mileage figure.

### Council Wide Initiative: Transport & Cycling Fund

Grants are provided to council services for projects which encourage the reduction of car travel or reduce CO<sub>2</sub> emissions from transportation. Last year £10,943 was granted for the continuation of the environmental driver training course, promotion of the Kirklees Car share Scheme, and cycling insurance.

### Transport Planning - Kirklees Region

On a sub-regional level the transport strategy covering all modes of transport - buses, trains, roads, cycling and walking is the West Yorkshire Local Transport Plan (LTP). This is produced through the partnership of the 5 West Yorkshire (WY) districts of Kirklees, Bradford, Wakefield, Calderdale & Leeds, plus the WY Public Transport Executive, Metro.

The current LTP covers the period 2006 - 2011, and its core objectives are:

- DELIVERING ACCESSIBILITY - To improve access to jobs, education and other key services for everyone.
- TACKLING CONGESTION - To reduce delays to the movement of people and goods.
- SAFER ROADS - To improve safety for all highway users.
- BETTER AIR QUALITY - To limit transport emissions of air pollutants, greenhouse gases and noise.
- EFFECTIVE ASSET MANAGEMENT - To improve the condition of the transport infrastructure.

In the LTP there are various action plans and strategies to guide the projects to

meet these objectives, either on a district or core objective basis. In Kirklees, the projects aimed at achieving the LTP objectives and general increase in sustainable travel includes:

- Proposed new and extensions to off-highway routes for cycling & walking. In this reporting period the council opened Spa Bottom Path at Fenay Bridge and the Mirfield section of the Calder Valley Greenway.
- Proposed new on-highway cycle routes on major corridors, e.g. A62 Manchester Road and Leeds Road, A629 Penistone Road, A651 Oxford Road Gomersal, A58 Whitehall Road Birkenshaw. In this reporting period typically cycling facilities were completed along the A62 Manchester Road at Slaithwaite.
- Launch and promotion of car share scheme for Kirklees - [www.carsharekirklees.com](http://www.carsharekirklees.com) - and link up and joint promotion with other

West Yorkshire local authority's schemes – [www.wycarshare.com](http://www.wycarshare.com). There are now 300 Kirklees users registered. This year the Highways Agency car share lane on the M62/M606 junction will be promoted through the web site.

- Work with car club operators and Carplus (Yorkshire Forward-funded charity) to investigate implementation of car club in Huddersfield.
- Roll out of 'West Yorkshire Travel Plan Network,' and associated website – [www.wytravelplan.com](http://www.wytravelplan.com), in Kirklees. These provide information, assistance and best practice sharing for companies looking to implement travel-planning measures. The first promotional campaign is due to start in February 2008.
- Free town bus in Huddersfield, operating every ten minutes, 6 days a week, linking the bus and rail station, the indoor and outdoor markets, the university and Kingsgate. This facility now carries around 5000 passengers a week.
- Work with Metro and bus operators to implement corridor improvement schemes as part of Yorkshire Bus Initiative. Includes bus priority at signals and bus lanes, improved bus stops, modern accessible buses, and improved security and accessibility.
- Holmfirth Connection provides bus/rail through ticketing from the Holme Valley into St Georges Square and the train station, an extension to peak frequencies and later night-time buses.
- Kirklees Council have secured Department for Transport "access for all" funding for accessibility improvements at railway stations. Passenger lifts will

be installed at Huddersfield station to provide step free access to the island platform.

- Kirklees Council Urban Traffic Control (UTC) is currently undertaking work to trial bus priority at signalised junctions.
- The Huddersfield Bus Study (HUBS)- to assess whether bus service network in and around Huddersfield could be improved.
- A Performance Improvement Partnership (PIP) Agreement has been signed with the bus operator First and is being pursued with Stagecoach and Arriva. Schemes are currently being worked up to improve the reliability of bus journeys and the bus companies are examining real time information running data to improve bus scheduling.

Addressing transport connectivity is one of the key challenges within the increasingly important city region agenda. The Leeds City Region partnership have developed a Transport Vision which articulates how connectivity needs to be improved across the city region over the next 25 years to deliver a transport system which enables national, regional and local aspirations for economic growth, sustainable development, the environment and social inclusion.

In the Vision, the key theme is accessibility through connectivity and high quality transport that will:

- Connect all our core centres within the city region to each other;
- Connect our population to core centres, to employment sites, to training provision, and to leisure facilities within the city region;
- Connect our core centres to other city regions in the UK, most importantly Sheffield, Manchester and London connect our core centres to international airports and ports serving the city region;
- Provide choice and ensure that the growth in demand for car travel is minimised.

At a Kirklees level the council has adopted the 2025 Kirklees Transport Vision. At its core it has three main objectives:

- A top class public transport system for everyone providing a first choice for travel for many more new customers and a real alternative to using the car.
- A sustainable transport system that encourages healthy citizens, promotes social inclusion and preserves and enhances the local environment.

- A transport network that promotes a sustainable thriving economy for business to invest in.

## 11. Green Network

The council is committed to developing a plan for a comprehensive green network for the whole of the borough.

**What is a Green Network?** - A green network for Kirklees will provide an important amenity, recreational and wildlife resources as well as serving a transport utility function. It will be a contiguous network of green corridors; green routes and open spaces, building upon that which already exists across the district and serving multiple land use functions (e.g. flood alleviation).

It will encompass existing and proposed multiuse cycle ways, footpaths, horse-riding routes, canal routes, public rights of way, public access areas, wildlife sites, green spaces and greenway linkages such as river corridors and flood plains.

The following statement outlines what the council has achieved in this reporting period in delivering the Green Network in Kirklees.

### The council has:

- Produced a booklet, "Developing a Green Network in Kirklees" to publicise and explain the Green Network concept to a wider audience.
- Drafted an evidence base for the Green Network to be incorporated into the Local Development Framework process.
- The Green Network concept has been integrated into several large regeneration programmes (including the North Kirklees Strategic Development Framework and projects within the Kirklees Strategic Economic Zone).
- Additional funding of £30,000 has been ring-fenced for this financial year (07/08) and £45,000 for the next two years to fund Council Green Network voluntary sector projects. This will supplement the existing Environment Grant Scheme. External sources of funding are also being investigated.
- The council has used information from the borough-wide assessment of open space provision, carried out as part of the Local Development Framework programme, and undertaken further surveying to identify additional strategic 'aspirational' routes to add to the Green Network across Kirklees. These routes are currently being evaluated.

### The council has continued to deliver the following:

- Extended the area of Council owned land under management for wildlife conservation, for example through the SITA funded work across the district.
- Helped others in managing their land for wildlife including local community groups and organisations. An example of this is through the Coalfield Heathland Project.
- Improved access to open spaces including building more of the Green Network, including sites at Lady Wood, Kilner Bank and Honley Wood.
- Continued to improve the quality of open spaces in parks, allotments, along rivers and in school grounds to promote health and well-being in local communities.
- Continued to manage existing nature reserves and engage with the community to manage these.

### Future plans

The council's plans for the future include: finalising the plans and extent of the Green Network, identifying sources of funding and writing funding bids to develop the network further.

## 12. Built Environment

The council's Green Ambition and Environment Vision focus on the need to improve the environmental standards of buildings in Kirklees. In 2007, as part of the Green Ambition programme, work commenced on the development of a "Low Carbon" Development Framework (LDF) for Kirklees. This will ensure that the carbon footprint of development is significantly reduced, will support the development of the green network, and will help users of the planning system to build more sustainably. Work also began in 2007 on planning policies to be introduced ahead of the LDF to improve the sustainability of buildings and reduce carbon emissions in the district.

From 2007, the council introduced a Planning Waiver for renewable energy installations. Applicants that are submitting planning applications for proposals that will result in the generation of renewable energy can now have up to a maximum of £300 paid by the council. This will cover the fee for most small-scale renewable energy proposals, including 'householder' development.

In 2007 inter-service work begun on major development and regeneration projects that will include progressive sustainable design principles. These projects include

Excellent Homes for Life, Building Schools for the Future and Queensgate Revival. Sustainability Appraisals were undertaken on the Stadium Way Development proposal, the Kirklees Strategic Economic Zone, Queensgate Revival Scheme and the North Kirklees Strategic Development Framework.

To help manage the Green Ambition programme, an Energy and Building Standards Board was established. This board deals specifically with the built environment and will enable a more sustainable approach to corporate building standards.

Work began in 2007 on bringing together the policies and guidance relating to the built environment from different service areas. The Guide to Sustainable Buildings restates the council's commitment to achieving at least a Very Good BREEAM or Code 3 Sustainable Homes rating on key building elements for all new building and major refurbishment projects with a value greater than £500,000. All building projects with a value less than £500,000 are not required to undergo a BREEAM evaluation unless requested. However, these projects shall follow the same design philosophy, apply the new Building Regulations (2006) and specify highly sustainable (category A) materials in order to achieve the highest ecological and energy standards. Officers have also developed a new design policy which is "to improve the CO<sub>2</sub> Emission rate by 30% over the requirements of Building Regulations (2006) Part L2A" when constructing or procuring corporate buildings. It is hoped that Cabinet will approve this policy in March 2008.

2007 also saw the start of a major new programme to retrofit biomass boilers (both pellet and woodchip) into suitable corporate buildings as part of the council's rolling boiler replacement programme. This will reduce corporate CO<sub>2</sub> emissions significantly and help the council in its goal to reduce overall emissions by 30% by 2020 from a 2005 baseline.

## 13. Air Quality

Work began in June of 2006 to develop an air quality strategy with a steering group being formed of relevant council officers from Highways, Planning, Transport, Environment Unit, Economic Regeneration and Environmental Services. Subsequent discussions with each service area have resulted in the development of an air quality strategy, which was presented to Cabinet in April 2007 and approved.

Work took place in 2007 to develop a policy framework for air quality particularly in relation to the Local Development Framework (LDF) and development control. The LDF is yet to be finalised.

Every application on the planning list is examined to determine if air quality might

be a material consideration in its determination. In some cases an "Air Quality Impact Assessment" has been required as part of the application.

In order to advise developers about air quality as a consideration in the planning process an "Advice Note for Developers" has been produced and is available on the Kirklees Council website.

Review and assessment of air quality continued in 2007. However a detailed assessment of air quality has not been submitted to DEFRA as yet: a report is expected to be submitted early 2008.

A further three air quality continuous monitoring stations were acquired in 2006, two being placed along the M62 and one on the A644 in Ravensthorpe. This brings the total of continuous monitoring stations operating in Kirklees to nine

## 14. Contractors and Suppliers

The council has taken on the challenge of integrating sustainable procurement principles into its purchasing process. With a procurement budget of approximately £190 million per annum and with most procurement decisions devolved to council services it is a difficult issue to tackle.

A Sustainable Procurement Policy and Guide were approved by cabinet in March 2007 which includes integrating environmental, social and economic aspects into procurement decisions. Internal consultation was undertaken with Heads of Service and specific services engaged in procurement activities, to ensure that technical guidance was correct and appropriate to their needs. This Policy and Guide has now been rolled out to officers engaged in procurement activities across the council through training sessions and briefings.

The council aims to commence working with key suppliers and contractors and buy environmentally less damaging goods stipulating minimum recycled content in its specifications.

The council is also engaged in delivering road shows and seminars with SMEs and Voluntary Community Sector organisations in the area, in order to try to make it easier for firms to do business with the council. The seminars provide firms with information on the council's procurement processes and new developments, such as the Sustainable Procurement initiative. The council also works with partner organisations including Voluntary Action Kirklees, Business Link and Social Enterprise Support Centre to build social enterprise capacity and the local supply base.

The council has also continued to implement its Environmental Purchasing Policy

(2002), which stipulates the procurement of recycled paper, and Forest Stewardship Council (FSC) certified wood ensuring it is sustainability sourced.

The council Highways department has also continued to perform well in this area including environmental aspects in its specifications such as the use of recycled aggregate.

The council has continued to appraise its potential suppliers and contractors with regards their environmental credentials looking at aspects such as environmental policies and environmental management systems. Work is however in progress to review this procedure to make it more meaningful and robust in the future.

## 15. EMS Corporate Objectives, Targets and Performance Indicators

In 2005 the council introduced a set of environmental management system (EMS) performance indicators to help report on achievements against corporate environmental objectives and targets. Table 8 shows the indicators related to the specific areas of Kirklees Environmental Policy that are captured each year. The table also illustrates in which 'direction' the council wishes to see the indicator move (increasing, decreasing or static). A number of new performance indicators have also been introduced for this reporting period. The indicators also include Best Value Performance Indicators and Local Area Agreements that are related to environmental issues.

Policy Area	Corporate objectives	Corporate targets	Desired direction	Performance indicator	Performance in 2004-2005 reporting period	Performance in 2005-2006 reporting period	Performance in 2006-2007 reporting period
<b>Environmental Management</b>	<b>EM1</b> Maintain an environmental management system to identify and manage the council's environmental impacts.	To maintain EMAS in all council services	↔	Registration to EMAS maintained.	Kirklees Council entered a three year verification cycle and successfully passed the first phase in March 2005.	EMAS registration maintained.	EMAS registration maintained.
	<b>EM2</b> Carry out a regular evaluation of the council's environmental performance	Produce full statement every 3 years and interim statement every year.	↔	Environmental Statement produced on annual basis either interim or full.	Full Environmental Statement was produced and verified in 2005 which covered performance from April 2003 - Dec 2004.	Environmental Statement produced.	Environmental Statement produced.
	<b>EM3</b> Ensure compliance with all relevant environmental legislation and other requirements to which the council subscribes	For all council services to comply with environmental legislation.	↓	Number of prohibition/warning notices or prosecutions from environmental regulatory bodies per annum.	No prohibition/warning or prosecutions from regulatory bodies in 2005.	There were no prohibition or warning notices or prosecutions from environmental regulatory bodies during 2006.	Two Non-Compliance Notices were served on Kirklees Council in 2007, both relate to the Lower Spen Landfill Site. See page 7 for further details.

Policy Area	Corporate objectives	Corporate targets	Desired direction	Performance indicator	Performance in 2004-2005 reporting period	Performance in 2005-2006 reporting period	Performance in 2006-2007 reporting period
				Number of legal non conformance raised per annum.	There were 10 legal non conformance raised from carrying out legal audits. Most of these were due to minor waste related breaches and all of them have been corrected and preventative measures put in place.	There was one legal non conformance during 2006. This was a breach of the discharge consent to river from a Highways depot in Honley. The suspended solids limit was breached; measures have been put in place to ensure this does not happen again.	There were five legal non-conformances during 2007. Two were attributed to Building Services.
		3806	↓	Number of 'sites of potential concern' within the local authority area, with respect to land contamination.		3876 sites (2005-2006)	3806 sites (2006-2007)
	<b>EM4</b> Carry out a regular review of the council's environmental policy to ensure its ongoing effectiveness	To review policy at least every 3 years.	↔	Policy reviewed every 3 years.	The policy was revised in Nov 2004 and reported to the Senior Management Group.	The environmental policy was revised in December 2006 and approved by cabinet in January 2007.	No changes during this reporting period, however minor amendments to include climate change mitigation and adaptation and sustainable procurement are expected to be approved by cabinet in March 2008.
	<b>EM5</b> Minimise the risk of possible environmental damage from incidents and emergencies	No target	↓	Number of environmental incidents reported per annum.	No information available.	None reported during 2006.	None reported during 2007.

Policy Area	Corporate objectives	Corporate targets	Desired direction	Performance indicator	Performance in 2004-2005 reporting period	Performance in 2005-2006 reporting period	Performance in 2006-2007 reporting period
Environmental Awareness	EM6 Conduct sustainability appraisals on significant new policies and projects	No target		No performance indicator.	In 2005 two SA scoping reports have been undertaken for: <ul style="list-style-type: none"> <li>• LDF Core strategy and Thornton Lodge.</li> <li>• One scoping and SA completed for Kirklees Strategic Economic Zone</li> </ul>	In 2005 two SA scoping reports have been undertaken for: <ul style="list-style-type: none"> <li>• LDF Core strategy and Thornton Lodge.</li> <li>• One scoping and SA completed for Kirklees Strategic Economic Zone</li> </ul>	Performance indicator discontinued
	EA1 Educate, train and motivate staff to conduct their activities in an environmentally responsible manner.	No target	↑	Number and type of training or awareness raising sessions delivered to council staff covering environmental issues per annum.	A total of 28 sessions: <ul style="list-style-type: none"> <li>• 21 sessions by the Environment Unit;</li> <li>• 7 sessions on environmental driver training course by Highways.</li> </ul>	A total of 37 sessions were conducted during 2006, these are broken down into the following areas: <ul style="list-style-type: none"> <li>• Sustainability Assessments: 22 sessions;</li> <li>• Environment Unit: 7 sessions;</li> <li>• Highways: 8 sessions on environmental driver training course.</li> </ul>	A total of 18 sessions were conducted during 2007, these are broken down into the following areas: <ul style="list-style-type: none"> <li>• Highways: 10 sessions on environmental driver training course</li> <li>• Environment Unit: 8 sessions.</li> </ul>
		Six environmental theme months developed per year.	↔	Number of Environmental theme months developed by the Environment unit per annum.	Six theme months delivered in 2005.	Six environmental theme months were developed by the Environment Unit and delivered during 2006.	Six environmental theme months were developed by the Environment Unit and delivered during 2007.
	EA2 Raise the environmental awareness of the people of Kirklees, particularly children and young people	No Target	↑	Number of schools in Kirklees with Eco school status (green flag).	Fairfield School in Heckmondwike gained 2nd Green Flag award in July 2004.	6 schools have maintained green flag Eco-school status in 2005-2006.	Four schools have maintained Eco-school status (green flag) and one school has gained Eco-school status (green flag) in 2006-2007.

Policy Area	Corporate objectives	Corporate targets	Desired direction	Performance indicator	Performance in 2004-2005 reporting period	Performance in 2005-2006 reporting period	Performance in 2006-2007 reporting period
		10 schools per year	↔	Number of schools that have worked on energy efficiency projects as part of the CREATE project.	10 schools in 2004-2005.	12 schools took part in the CREATE project during the academic year 2005-2006.	10 schools took part in the CREATE project during the academic year 2006-2007.
		No target	↑	Number of schools and pupils participating in the Environmental Services Environmental Education Programme.	32 schools in 2005.	39 schools with 6,238 pupils took part between September 2005 and July 2006.	32 schools with 4,380 pupils took part in the academic year 2006-2007.
		No target	↑	Number of environmental projects commissioned by public area committees.		New Performance indicator - 45 in 2006.	96 in 2007.
		No target	↑	Number of environmental awareness raising events for the public delivered, contributed to and organised by the Environment Unit.		New Performance indicator - 30 in 2006.	45 in 2007.

Policy Area	Corporate objectives	Corporate targets	Desired direction	Performance indicator	Performance in 2004-2005 reporting period	Performance in 2005-2006 reporting period	Performance in 2006-2007 reporting period
		No Target		Number of environmental articles released to the local press and council media.		New Performance indicator - 45 in 2006.	32 in 2007.
	<b>EA3</b> Encourage and actively support local communities to undertake environmental projects	No Target	↑	Number of community environmental projects managed or supported by the council.	75 projects were supported by the council: <ul style="list-style-type: none"> <li>• 28 Environment Unit grants were awarded in 2005;</li> <li>• Community workers have supported 7 environmental projects via Community Support Service;</li> <li>• Community Support Service has funded 14 groups that where awarded money to fund environmental projects which totalled £38,458;</li> <li>• 14 biodiversity projects were supported;</li> <li>• Culture and Leisure have supported 12 projects.</li> </ul>	74 projects have been supported by the council: <ul style="list-style-type: none"> <li>• 32 Environment Unit grants awarded in 2006;</li> <li>• 3 biodiversity projects supported;</li> <li>• Culture &amp; Leisure: Countryside Unit supported or managed 16 projects;</li> <li>• Culture &amp; Leisure: Oakwell Hall developed 5 projects;</li> <li>• Culture &amp; Leisure: Countryside Project Officer worked with 8 projects;</li> <li>• Community Support Service have supported 9 projects;</li> <li>• Economic Development Service supported 1 scheme with £25,000 of landfill tax funding.</li> </ul>	96 projects have been supported by the council: <ul style="list-style-type: none"> <li>• 21 Environment Unit grants awarded in 2007</li> <li>• 4 biodiversity projects supported</li> <li>• Culture &amp; Leisure: Countryside Unit supported or managed 42 projects</li> <li>• Culture &amp; Leisure: Oakwell Hall managed or supported 9 projects</li> <li>• Culture &amp; Leisure: Castle Hill supported 2 projects</li> <li>• Community Support Service supported 12 projects</li> <li>• Economic Development Service supported or managed 6 projects</li> </ul>
<b>Energy and Greenhouse Gas Emissions</b>	<b>EG1</b> Implement actions to achieve reductions in greenhouse gas emissions within Council operations	To reduce the councils CO emissions by 30% below 2005 levels by 2020. (Buildings and transport and street lighting).	↑	% reduction in CO <sub>2</sub> emissions from a 2005 baseline from Council buildings, transport and street lighting.	By 2005 the council had achieved its target of reducing CO <sub>2</sub> emissions to 30% below a 1990 baseline.	Baseline set for 2005 of 22, 180 tonnes CO <sub>2</sub> .	24,176 tonnes CO <sub>2</sub> . There has been an increase above the 2005 baseline figure due to new guidance being published by DEFRA improving the accuracy of CO <sub>2</sub> Monitoring. This has resulted in an increase in the CO <sub>2</sub> attributed to the GQCHP electricity purchased for Street lighting as well as an increase in the CO <sub>2</sub> attributed to employee mileage.

Policy Area	Corporate objectives	Corporate targets	Desired direction	Performance indicator	Performance in 2004-2005 reporting period	Performance in 2005-2006 reporting period	Performance in 2006-2007 reporting period
		No target set	↑	Number of CWI projects which incorporate energy saving improvements		New performance indicator - 7 projects in financial year 2005-2006	11 projects in financial year 2006-2007.
	<b>EG2</b> Facilitate the reduction of greenhouse gas emissions (such as CO <sub>2</sub> ) within the Kirklees area	2,500 grant aided home energy conservation scheme installations per annum in private sector homes via Local and national grants as per 2004-7 Housing strategy action plan.	↑	Number of properties that receive grant aided home energy conservation scheme installations in the private sector per annum.	7,290 (2004-2005 HECA report) total households.	3,998 (financial year 2005-2006 HECA report) total households.	6,006 (financial year 2006-2007 HECA report) total households.
	<b>EG3</b> Increase the amount of renewable energy generated by the council and its arms-length organisations	Incorporate renewable energy sources into the design of all new developments procured by the council to achieve by 2010/11 a target of 30% of the estimated total energy consumption.	↑	% of renewable energy generated by the council.	0.13% of electricity generated by Kirklees Council. 0.05% of gas and electricity generated by Kirklees Council. These figures are currently based on the expected performance of the various renewable systems as per the manufacturer's specification. The majority of the systems are being monitored; but data is only available for part-year at the present time. Once a full year's data is available for each of the systems the actual generation	0.13% of the councils total energy consumption including gas, electricity, solid fuel and fuel oil are produced through renewable energy generation, including Solar Photovoltaic, Solar Thermal water heating and Wind Energy generation. The figure is based upon monitoring data combined with manufacturers expected performance for new installations. A total of 73,593 kWh of energy was generated during 2005. 0.29% of the council's electricity	0.07% of the councils total energy consumption including gas, electricity, solid fuel and fuel oil are produced through renewable energy generation, including Solar Photovoltaic, Solar Thermal water heating and Wind Energy generation. The figure is based upon monitoring data combined with manufacturers expected performance for new installations. A total of 35,148 kWh of energy was generated during 2006.

Policy Area	Corporate objectives	Corporate targets	Desired direction	Performance indicator	Performance in 2004-2005 reporting period	Performance in 2005-2006 reporting period	Performance in 2006-2007 reporting period
		Starting 06/07-10%  2010/11-30% Increasing by 5% every year.			figures will be used in the calculations, making these figures more accurate.	consumption and 0.05% of the councils heating demand were generated by renewable energy during 2005.	0.2% of the council's electricity consumption and 0.01% of the councils heating demand were generated by renewable energy during 2006.
	<b>EG4</b> Increase the proportion of energy from renewable sources purchased for Council managed buildings and street lighting		↑	% of energy for council managed buildings and street lighting from renewable sources.	15.2% energy sourced from renewable energy during 2004.	11.6% energy sourced from renewable energy during 2005.	12.5% of energy was sourced from renewable sources during 2006.
	<b>EG5</b> Encourage and support the greater use of renewable energy within the Kirklees District	Local Area Agreement Target over next 3 years	↑	Increase local production of renewable energy in the district (LAA target).		New Performance indicator - A baseline has been set during 2005-2006 of 769 MWh generated through solar electric, solar water heating and wind energy.	599MWh generated through solar electric, solar water heating and wind energy during 2006-2007.
<b>Water</b>	<b>WT1</b> Implement actions to reduce, reuse and recycle water within the council and arms-length organisations.	No target	↑	% reduction in water use in Council operations. Potential annual water savings through initiatives implemented via the CWI fund (cubic metres).	4.4% reduction during 2004 (180,016m <sup>3</sup> consumed).  None during 2005.	3.1% reduction during 2005 (174,402m <sup>3</sup> consumed).  None during 2006.	6.5% reduction during 2006 (163,037m <sup>3</sup> consumed).  122m <sup>3</sup> during financial year 2006-2007

Policy Area	Corporate objectives	Corporate targets	Desired direction	Performance indicator	Performance in 2004-2005 reporting period	Performance in 2005-2006 reporting period	Performance in 2006-2007 reporting period
	<b>WT2</b> Encourage and support actions to reduce, reuse and recycle water within the Kirklees District.	No target	↑	Potential annual water savings through initiatives implemented by arms length organisations via the CWI fund e.g. Kirklees Neighbourhood Housing, Kirklees Active Leisure and schools (in cubic meters)	4 schemes - installing push taps and urinal controls to 3 schools and 1 sports centre. <ul style="list-style-type: none"> <li>• Estimated cost: £6,500</li> <li>• Estimated annual water saving: 430m<sup>3</sup></li> <li>• Estimated annual financial saving: £780</li> </ul>	3 schemes resulting in savings of 363m <sup>3</sup> during financial year 2005-2006.	322m <sup>3</sup> during financial year 2006-2007.
<b>Waste</b>	<b>WA1</b> Implement actions to reduce, re-use, recycle and recover value from waste within Council operations	No target	↑	Number of corporate recycling/reuse initiatives in implementation	No new recycling initiatives were established in 2005. However improvements were made to 1 existing scheme. There are currently 9 schemes in operation. <ul style="list-style-type: none"> <li>• Recycling of office waste paper</li> <li>• Redundant IT reuse and resale</li> <li>• Recycling of mobile phones, printer and toner cartridges (improved)</li> <li>• Envelope use and recycling</li> <li>• Recycling of fluorescent tubes</li> <li>• Reuse of redundant furniture</li> <li>• Vending cup recycling</li> <li>• Cardboard at a number of premises</li> <li>• Scrap metal at transport depots</li> </ul>	The 9 existing recycling or reuse initiatives previously established continued to be successfully implemented during 2006. <ul style="list-style-type: none"> <li>• Recycling of office waste paper</li> <li>• Redundant IT reuse and resale</li> <li>• Recycling of mobile phones, printer and toner cartridges (improved)</li> <li>• Envelope use and recycling</li> <li>• Recycling of fluorescent tubes</li> <li>• Reuse of redundant furniture</li> <li>• Vending cup recycling</li> <li>• Cardboard at a number of premises</li> <li>• Scrap metal at transport depots</li> <li>• The council has also extended its fluorescent tube recycling contract to schools in Kirklees.</li> </ul>	During 2007 a trial programme for Green Bin recycling collections was started at Civic Centre 1. This programme is expected to extend to a further four major council premises in Huddersfield during 2008. There are now 9 schemes in operation as the furniture reuse scheme ceased to operate due to logistical issues. <ul style="list-style-type: none"> <li>• Green bin scheme - pilot</li> <li>• Recycling of office waste paper</li> <li>• Redundant IT reuse and resale</li> <li>• Recycling of mobile phones, printer and toner cartridges</li> <li>• Envelope use and recycling</li> <li>• Recycling of fluorescent tubes (contract is now split between Mercury Recycling Ltd. and</li> </ul>

Policy Area	Corporate objectives	Corporate targets	Desired direction	Performance indicator	Performance in 2004-2005 reporting period	Performance in 2005-2006 reporting period	Performance in 2006-2007 reporting period
							Lampcare Ltd.) includes schools. <ul style="list-style-type: none"> <li>• Vending cup recycling</li> <li>• Cardboard at a number of premises</li> <li>• Scrap metal at transport depots</li> </ul>
			↑	Amounts of waste recycled/reused by selected services  Service specific recycling or reuse initiatives established per annum	Highways construction 2004-2005: <ul style="list-style-type: none"> <li>• % materials purchased from secondary and recycled sources is 59% (total purchased 39,000 tonnes);</li> <li>• % material excavated sent for recycling is 62% (total excavated 50,000 tonnes).</li> </ul> Information not collected in 2005 as there is no monitoring system in place.	Highways construction 2005-2006: <ul style="list-style-type: none"> <li>• % materials purchased from secondary and recycled sources is 62% (total purchased 24,712 tonnes);</li> <li>• % material excavated sent for recycling is 65% (total excavated 58,436 tonnes).</li> </ul> Information not collected in 2006 as there is no monitoring system in place.	Highways construction 2006-2007: <ul style="list-style-type: none"> <li>• % materials purchased from secondary and recycled sources is 55% (total purchased 23,618 tonnes);</li> <li>• % material excavated sent for recycling is 62% (total excavated 31,823 tonnes).</li> </ul> Information not collected in 2007 as there is no monitoring system in place.
	<b>WA2</b> Progress towards greater waste reduction and higher re-use, recycling, composting and recovery of value from waste within the Kirklees District, thus reducing dependence on landfilling	15.97%	↑	BVPI82a(i) – Percentage of household waste arising which have been sent by the Authority for recycling (calculated using cumulative data).	11.82%	15.84% (2005-2006 Financial Year).	16.27% (2006 – 2007 Financial Year)
		5.87%		BVPI82b(i) – Percentage of household waste sent by the Authority for composting or	4.41%	5.22% (2005-2006 Financial Year).	5.31% (2006-2007 Financial Year). The target was not reached despite increased performance in this Performance indicator.

Policy Area	Corporate objectives	Corporate targets	Desired direction	Performance indicator	Performance in 2004-2005 reporting period	Performance in 2005-2006 reporting period	Performance in 2006-2007 reporting period
	<b>WA2</b> (continued)		↑	treatment by anaerobic digestion (cumulative data)			
		56.28%	↓	BVPI82c(i) – Percentage of the total tonnage of household waste arisings which have been used to recover heat, power and other energy sources (calculated using cumulative data).	57 %	51.47% (2005-2006 Financial Year) Target performance not achieved due to high downtime on the waste and energy plant.	40.93% (2006-2007 Financial Year) Target performance not achieved due to an extended period of downtime on the waste and energy plant.
		21.88%	↓	BVPI82d(i) – Percentage of household waste arising which have been landfilled (cumulative data).	26.78%	27.47% (2005-2006 Financial Year).	37.49% (2006-2007 Financial Year). Target was not reached to an extended period of downtime at the Waste to Energy plant.
		471kg	↓	BVPI84a – Number of kilograms of household waste collected per head (cumulative data).	460kg	463.6kg (2005-2006 Financial Year).	469.9 kg 2006-2007 (Financial Year). The target for this PI was reached despite a small decrease in performance.

Policy Area	Corporate objectives	Corporate targets	Desired direction	Performance indicator	Performance in 2004-2005 reporting period	Performance in 2005-2006 reporting period	Performance in 2006-2007 reporting period
Transport		89.30%	↑	BVPI91a - Percentage of households resident in the authority's area served by kerbside collection of recyclables (one recyclable).	88.32%	88.72% (2005-2006 Financial Year).	90.9% (2006-2007 Financial Year).
	<b>WA3</b> Improve street cleanliness by reducing litter, graffiti and fly-tipping in the Kirklees District	10%	↓	BVPI199a - Percentage of relevant land and highways assessed as having combined deposits of litter and detritus that fall below an acceptable level.	5%	8.8% (2005-2006 Financial Year).	5.2% (2006-2007 Financial Year).
	<b>TP1</b> Implement actions which seek to minimise the environmental impact of the council's fleet vehicles and staff journeys to, from and at work		↓	<p>Number of new Council Travel Plans developed per annum</p> <p>Number of miles travelled by Kirklees Council employees per annum in the provision of council services.</p>	<p>No travel plans were developed during the reporting period</p> <p>Total = 27,670,140 miles. Breakdown is: • Employee mileage (actual) = 5,154,160 (2004-2005 data); • Travel to work (est.) = 16,733,532 (2004 data); • Fleet = 5,782,448 (2004-2005 data).</p>	<p>No plans were developed in 2006. However there have been a number of initiatives undertaken to reduce business travel and commuting in Culture and Leisure services. Performance indicator under review.</p> <p>Total = 28,251,361 miles. Breakdown: • Employee mileage (actual) = 5,570,688 (2005-2006 data); • Travel to work (est.) = 17,442,915 (2006 data); • Fleet = 5,237,758 (2006 data - amended).</p>	<p>No travel plans were developed in 2007.</p> <p>Total = 27,335,885 miles. Breakdown: • Employee mileage (actual) = 5,515,284 (2006-2007 data) • Travel to work (est.) = 16,579,141 (2007 Data) • Fleet = 5,241,460 (2007 data).</p>

Policy Area	Corporate objectives	Corporate targets	Desired direction	Performance indicator	Performance in 2004-2005 reporting period	Performance in 2005-2006 reporting period	Performance in 2006-2007 reporting period
Green Network			↓	CO <sub>2</sub> emissions from fleet vehicles	5679 tonnes CO <sub>2</sub> during financial year 2004-2005	5339 tonnes CO <sub>2</sub> during financial year 2005-2006.	5659 tonnes CO <sub>2</sub> during financial year 2005-2006. Figure now includes emissions from vehicles hired by all services (257 tonnes CO <sub>2</sub> ).
	TP2 Encourage cycling, walking and other objectives within the regional and district Transport Plans	45	↑	Number of new green travel plans developed for schools	A guide produced on how to develop a school travel plan "10 simple steps to your school travel plan". 3 plans were completed during 2004-2005 financial year.	32 travel plans were developed for Kirklees schools during financial year 2005-2006.	50 green travel plans were developed for schools in Kirklees during the financial year 2006-2007. (Includes one independent school)
		No target	↑	Length of designated off-road and on-road cycle ways in Kirklees	Over 60km	Data not presently available due to limited resources available to accurately map the cycle-network within the district.	There is no data available at present for on road cycle routes, however the off road routes are available Off road routes: 59.6km Greenways 36.87km Canal side 22.76km
	GN1 Manage land under Council control within the Kirklees District for the benefit of wildlife, especially the Bio-diversity	No target	↑	Area of priority habitats managed as part of BAP by the council	197ha (2004-2005)	257ha (2005-2006)	318ha (2006-2007)
	Action Plan priority species and habitats			% of council-owned farmland managed under agri-environment schemes	Information not available.	11% (2006 Calendar Year)	11% (2007 Calendar Year) No new applications to agri-environment schemes were made during the reporting period.

Policy Area	Corporate objectives	Corporate targets	Desired direction	Performance indicator	Performance in 2004-2005 reporting period	Performance in 2005-2006 reporting period	Performance in 2006-2007 reporting period
	<b>GN2</b> Actively protect and enhance the natural environment and support others in doing so	No target	↑	Area of priority habitats managed as part of BAP by other groups	3146ha (2004-2005).	2894ha (2005-2006). This figure has reduced over the previous year due to an improved reporting system, which provides a more representative figure. Previously reported figures have been based upon information provided by English Nature.	
		142	↑	Increase in number of sites designated for nature conservation /or areas of land under management	129 sites (21 sites with structured management plans)	147 (40 sites with structured management plans in implementation, written or in development in 2006).	147 (48 sites with structured management plans in implementation, written or in development in 2007).
	<b>GN3</b> Work with land managers to effectively manage and improve accessibility to open country and the public rights of way network (footpaths, bridleways and byways)	60%	↑	BVPI 178 - The percentage of total length of footpaths and other rights of way which were easy to use by members of the public	37.1% (2004-2005)	51% (2005-2006 Financial Year)	61.28% (2006-2007 Financial Year)

Policy Area	Corporate objectives	Corporate targets	Desired direction	Performance indicator	Performance in 2004-2005 reporting period	Performance in 2005-2006 reporting period	Performance in 2006-2007 reporting period
	<b>GN4</b> Improve the quality & accessibility of parks, open spaces, greenways and green corridors across the Kirklees District	No target	↑	The number of environmental and community projects supported financially and/ or through a minimum of one full day of officers time by Kirklees Council that improves the extent of the Green Network	15 projects supported in 2005 <ul style="list-style-type: none"> <li>• 6 Environment Unit grants</li> <li>• 6 New Opportunities Fund projects</li> <li>• 3 landfill funded projects</li> </ul>	40 projects supported during 2006: <ul style="list-style-type: none"> <li>• 21 big lottery Projects (formerly New Opportunities Fund);</li> <li>• 11 Environmental Grants;</li> <li>• 8 Biodiversity Groups.</li> </ul>	104 projects supported during 2007 <ul style="list-style-type: none"> <li>• 14 Environmental Grants</li> <li>• 67 Biodiversity Projects</li> <li>• 22 Projects by Culture &amp; Leisure Countryside Unit</li> <li>• 1 Project by Culture &amp; Leisure: Castle Hill</li> </ul>
		43%	↑	% of residents satisfied with cleanliness of parks and play areas		43% of residents were satisfied with the cleanliness of parks and play areas during 2005-2006.	44% of residents were satisfied with the cleanliness of parks and play areas during 2006-2007.
				% of residents who are satisfied with how their local parks are used (including the activities available, festivals and events)		45% of residents were satisfied with how their local parks were used during 2005-2006.	44% of residents were satisfied with how their local parks were used during 2006-2007. Performance indicator discontinued in 2007-2008.
<b>Built Environment</b>	<b>BN1</b> Encourage sustainable design and management practices in	No target		Number of schemes where the council has worked in partnership to	8 schemes were implemented during 2005.	9 schemes were implemented during 2006.	2 schemes were implemented during 2007; <ul style="list-style-type: none"> <li>• Moorlands J&amp;I New School – Biomass Boiler &amp; Rainwater Recovery system</li> </ul>

Policy Area	Corporate objectives	Corporate targets	Desired direction	Performance indicator	Performance in 2004-2005 reporting period	Performance in 2005-2006 reporting period	Performance in 2006-2007 reporting period
	council and district-wide new builds, renovations and conversions		↑	implement sustainable design and management practices in new developments per annum			<ul style="list-style-type: none"> <li>St Peg Lane New School - Biomass Boiler, Rainwater Recovery system, Wind Turbine &amp; Solar Thermal Panels</li> </ul>
			↑	% of homes built in partnership that gained the EcoHomes VERY GOOD or EXCELLENT rating per year.	Information not available	No homes were built that gained the EcoHomes good or excellent rating during financial year 2005-2006. New legislation adopted during this time period will significantly increase this figure during the next reporting period.	68% of all properties handed over during the 2006-2007 financial year were of the EcoHomes Very Good or Excellent rating. This included 31 homes in the Primrose Hill development receiving the Excellent rating.
<b>Air Quality</b>	<b>AQ1</b> Develop a Kirklees Air Quality Strategy. This will include air quality related actions, targets and good practices including those promoted by other Kirklees policies and initiatives, in order to maintain air quality where it is good and improve air quality where it is poor	No target		Air Quality Strategy developed.		New Performance indicator - Air Quality Strategy under development.	The Air Quality Strategy was adopted by cabinet in April 2007.
			↓	Number of days per annum where air quality exceed air quality objectives	A system has been set up to record the number of planning applications that are assessed for potential air quality impacts in 2006. This will be reported in the next statement. There were 57 days in 2005 where air quality exceeded air quality objectives.	79 days were recorded during 2006 when the short term air quality objectives were exceeded at one or more continuous pollution monitoring stations, averaging at 19 days per station	160 days were recorded during 2007 when the short term air quality objectives were exceeded at one or more continuous pollution monitoring stations, averaging at 20 days per station.

Policy Area	Corporate objectives	Corporate targets	Desired direction	Performance indicator	Performance in 2004-2005 reporting period	Performance in 2005-2006 reporting period	Performance in 2006-2007 reporting period
	<b>AQ2</b> Work in partnership with other services to produce a policy framework as part of the Air Quality Strategy which will inform decision making in the areas of development control and regeneration	No target	↑	Air Quality Policy framework developed		Air Quality policy framework has been developed during 2006.	The Air Quality Policy Framework was developed during 2006. Consultation for the Air Quality in the Local Development Framework is ongoing.
				Percentage of planning applications that have been assessed for potential air quality impacts in 2006		100% were assessed during 2006.	100% were assessed during 2007, nine applications were required to conduct an air quality impact assessment.
	<b>Contractors and Suppliers</b>	<b>CS1</b> Implement initiatives which seek to minimise the environmental impacts of all Council purchases of goods and services	No target		Number of initiatives implemented per annum	One Initiative: a green procurement working group was set up who produced draft product procurement guidance policy notes during 2005	2 initiatives; a sustainable procurement policy and a Sustainable procurement guide were developed during 2006.
	<b>CS2</b> Work in partnership with our suppliers and contractors to minimise the environmental impacts of their goods and services	No target	↑	Number of suppliers and contractors appraised by the Environment Unit per annum.	74 contractors in 2005	212 contractors in 2006	123 contractors in 2007

## 15. EMAS Declaration

Based on site visits, interviews, documentation, data and information examined, Lloyd's Register Quality Assurance has conducted that:

- The Environmental Statement complies with the requirements of the EC Eco-Management and Audit Scheme Regulations (EC) No.76/2001 (EMAS).
- Data and Information in this Environmental Statement is reliable and adequately covers all significant environmental aspects and impacts of relevance to the organisation.

Date of verification: 14th March 2008

Date of Validation: 31st March 2008

Validation expiry: 31st March 2008

Signed



Ted Rosser  
EMAS Lead Verifier

Lloyd's Register Quality Assurance Ltd  
71 Fenchurch Street,  
London,  
EC3M 4BS  
United Kingdom

Registration Number: 1879370

## Glossary

**ALMO** - Arms Length Management Organisation; a not-for-profit organisation run by an unpaid board of directors that includes councillors and tenant representatives. The council continues to own the homes; tenants stay as council tenants and keep all their legal rights.

**Best Value Performance Indicator (BVPI)** - a statutory set of 90 indicators developed by Government Departments to measure the performance of local authorities.

Biodiesel - a diesel-equivalent, processed fuel made from biological sources such as vegetable oils, which can be used in unmodified diesel-engined vehicles.

**Biomass** - Biomass is a collective term for all plant and animal material. A number of different forms of biomass can be burned or digested to produce energy. Examples include wood, straw, poultry litter and energy crops such as willow and poplar grown on short rotation coppice and miscanthus

**BREEAM** - Building Research Establishment: Environmental Assessment Method; designed to help construction professionals understand and mitigate the environmental impacts of the developments they design and build.

**Carbon Dioxide Emissions (CO<sub>2</sub>)** - CO<sub>2</sub> is the main attributing gases to climate change. The amount CO<sub>2</sub> emitted is calculated each year as this is a key measurement of the environmental performance of an organisation.

**Good Quality Combined Heat and Power (GQCHP)** - a fuel-efficient energy technology that, unlike conventional forms of power generation it puts to use the by-product heat that is normally wasted to the environment as such CHP is a very efficient technology for generating electricity and heat together. Good Quality Combined Heat and Power is accepted as being a very efficient form of CHP, often utilising Biomass as fuel.

**DEFRA** - Department for Environment, Food and Rural Affairs

**EMAS** - Eco Management Audit Scheme; An Environmental Management System provides an organisation's management with a structured framework for identifying, evaluating, managing and improving its environmental performance. It helps to ensure the organisation's overall environmental goals, as set out in its environmental policy, are implemented throughout the organisation and that employees, contractors and suppliers know their roles and responsibilities in helping the organisation to achieve them.

**ECO Homes** - A building standard by developed by BREEAM which is designed to ensure the environmental sustainability of a newly built home, the highest rating available is Excellent.

**FSC** - Forest Stewardship Council; an international organisation that brings people together to find solutions which promote responsible stewardship of the world's forests. It sets international standards for responsible forest management and provides certification to those who are doing so.

**Greenhouse Gases** - are gases known to be an attributing factor to Climate Change, including Methane (CH<sub>4</sub>), Carbon Dioxide (CO<sub>2</sub>), Nitrous Oxide (N<sub>2</sub>O) and Water Vapour.

**Green Network** - Kirklees aspires to create a green network to link wildlife sites, river corridors and other cultural facilities to maximise their potential for biodiversity and community uses.

**Green Tariffs** - Electricity purchased from renewable energy sources such as solar, wind and wave power.

**Green Bins** - The waste bins in which dry recyclable material is collected by Kirklees Council Environmental Waste Services.

**Heat Pumps** - Methods of heating a home either by air-sourced and ground-sourced heat pumps. Each work by moving the difference in heat between the indoor air and either the outdoor air (air-sourced) or the ground (ground-sourced).

**LAA** - Local Area Agreements; set out the priorities for a local area agreed between central government and the local authority and Local Strategic Partnership plus other key partners at the local level

**LDF** - Local Development Framework; a folder of local development documents that outlines how planning will be managed in an area.

**Renewable Energy** - is energy derived from resources that are regenerative or for all practical purposes cannot be depleted e.g. energy generated from solar, water and wind sources.

**Solar PV (Photovoltaic) Panels** - Solar PV panels uses energy from the sun to create electricity to run appliances and lighting. PV requires only daylight, not direct sunlight, to generate electricity.

**Solar Thermal Water Heating Panels** - Solar water heating systems use heat from the sun to work alongside a conventional water heater.

**SUDS** – Sustainable Urban Drainage Systems use techniques to effectively manage drainage at source including dry ditches (swales), detention/attenuation ponds, and integrated constructed wetlands, all of which aim to detain run-off and release it slowly into watercourses or to ground.

**Code for Sustainable Homes** - a national standard for sustainable design and construction of new homes launched in 2006. Since April 2007 the developer of any new home in England can choose to be assessed against the Code.

**Supplementary Planning Documents** - are used to provide further detail to policies and proposals contained in a Development Plan Document the SPD will form part of the Local Development Framework, and will be an important consideration in determining planning applications.

**Sustainable Building Code** – outlines a national standard for the sustainable design and construction of new homes.

**UK Emissions Trading Scheme** – was the world's first economy-wide greenhouse gas emissions trading scheme. The scheme was launched in March 2002, and ran until December 2006.

**Warm Zone** – A Warm Zone is an area based programme that delivers effective, targeted help to provide energy efficiency improvements, decent homes, improved wellbeing and income maximisation.

**Yorkshire Forward** - Yorkshire and Humber Regional Development Agency



# Environmental Statement



## Produced by:

Kirklees Council Environment Unit  
23 Estate Buildings  
Railway Street  
Huddersfield  
HD1 1JY

Telephone: 01484 223568  
Fax: 01484 223576  
Email: [environment.unit@kirklees.gov.uk](mailto:environment.unit@kirklees.gov.uk)

March 2008



INVESTOR IN PEOPLE