

City Build

Cityworks Directorate



First Environmental Public Statement for Financial Year 2001/2002
An environmental public statement for the Eco Management & Audit Scheme (EMAS)



Newcastle upon Tyne is the regional capital of the North East of England and a major cultural centre. It is home to around 259,600 people and is visited by many more who come to work, study, shop and relax.

Newcastle City Council

Newcastle City Council employs approximately 15,000 staff, and had a gross expenditure on services in 2001/02 of £598 million (Newcastle City Council Budget 2001/02).

The Chief Executive heads the Council's officer structure and leads the Corporate Team. This comprises the Chief Executive and Directors together with the Head of Policy and Research and the Head of Financial Services.

The Council has six directorates, each providing vital services and support to the various stakeholders of Newcastle upon Tyne.



Cityworks

Cityworks, is one of the six Directorates, and is responsible for maintaining and improving the infrastructure of an attractive and functional city.

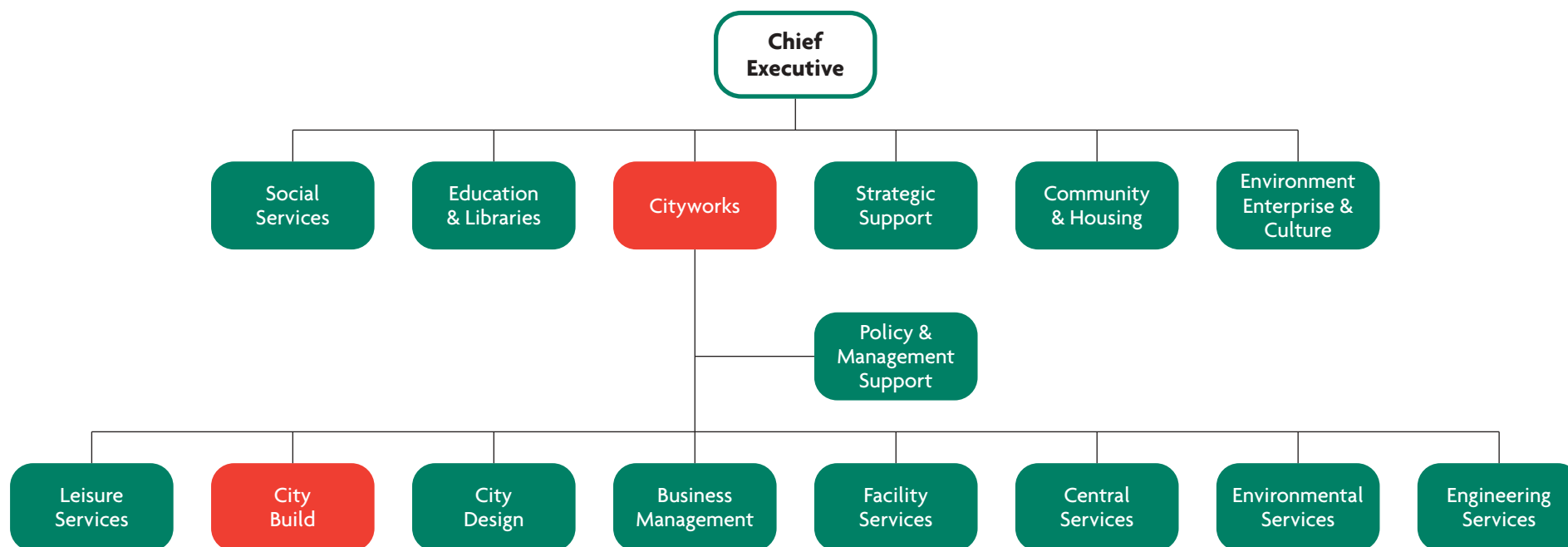
Cityworks plays a vital role in the Council's priority of creating a safe, clean, healthy and sustainable environment that meets the needs of residents, businesses and visitors alike. Cityworks employs approximately 5,000 people, over 3,500 of whom live in Newcastle.

Cityworks has a strong, proactive commitment to continuously modernise the services it provides, both through the standards achieved 'on the ground'

and also through the efficiency of their operations. This ensures that the best possible value for money is achieved from the human and financial resources. In doing this Cityworks embraces the government's agenda for modernisation, seeking to take full advantage of technological advances to improve the services and to make them more accessible to all customers of the Council.

This environmental statement contains details about a division of Cityworks

– City Build, this section fits into the structure of the council as shown:



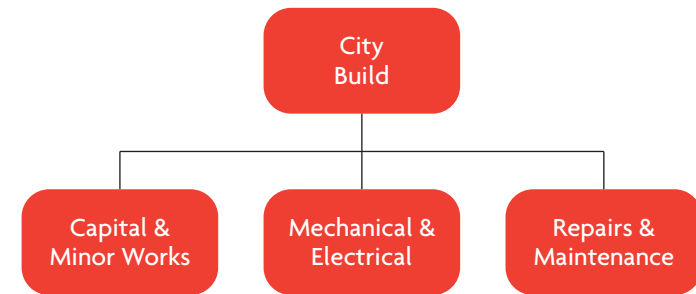
Who City Build are and what they do

City Build is Newcastle City Council's own building company offering a comprehensive service to both public and private organisations. They have expertise built up over many years through building, repairing and maintaining properties ranging in scale from houses to large commercial premises.

City Build has three main operational units as can be seen from the structure.

City Build offer a number of trades including:

- Joinery
- Brick Laying
- Plastering
- Ground working
- Painting
- Glazing
- Roofing
- Hard landscaping
- Drain work
- Plumbing
- Electrical work
- Gas Fitting/Services
- Void Cleaning



City Build is based in two depots, one in the West of the City, at Condercum Road and one in the East of the City, Allendale Road.

City Build employ approximately 945 staff, this includes both operational staff and management. There is also administrative and support personnel throughout the Cityworks Directorate that enable City Build to provide the level of service that they do.

City Build had an annual expenditure of £46.58 million and undertakes work that is passed through the City's architectural services section City Design for some capital projects. City Build offers a full maintenance and repair service for the lifetime of council buildings.

Protection and enhancement of the environment by Newcastle City Council



The City Council's vision for Newcastle is outlined through the Corporate Strategic Plan. This contains three general areas through which policy and direction is adopted and driven. The three areas set out the council's long-term strategic objectives and all integrate the environment as part of the council's objectives.

- The **Council's Vision For Newcastle** has five specific aims, one being *"A City which provides a safe, clean, healthy and sustainable environment."*
- The **Council's Corporate Policy Priorities (CPPs)** has six aims, one being *"Improving the Local Environment – Working to create a clean, healthy and attractive environment which will improve the quality of life in Newcastle."*
- The **Council's Values and Management Principles** has six fundamental procedures, one being *"Local Agenda 21 – The commitment to minimise the use of non-renewable resources and promote recycling of waste whilst working towards building sustainable communities."*

Within these strategies there are specific targets which feed into the environmental management system (EMS).

Each CPP has a cross-directorate working group and additional action groups that feed into these working groups, thus enabling all stakeholders to have an input into the council's policies, visions and strategies. The strategies have also been taken into account when developing the 'Charter for the Environment' – Newcastle City Council's Environmental Policy.

General Managers Statement

City Build, as part of Cityworks, acquired ISO14001 certification in November 1997. At City Build we are committed to managing our activities in a responsible manner, while promoting environmental best practices. EMAS provides a framework for continual improvement. EMAS will also assist us to develop our aims and aspirations to modernise the service we provide and will enable us to contribute to the national agenda of improving the image and performance of the construction industry.



Nigel Hails, General Manager, City Build

Background

EMAS is the European Eco-Management and Audit Scheme for voluntary participation, which helps organisations to improve their environmental performance. A revised EMAS was introduced in March 2001 that incorporates ISO14001 as the EMS. By adopting this system we can manage our environmental risks and reduce our environmental impacts. A key feature of EMAS is communicating environmental information; this is done by producing

an environmental statement, which outlines environmental performance to stakeholders. It is a transparent, robust and credible way of showing others our environmental improvement. EMAS is also seen as way of demonstrating compliance with environmental legislation, as this is an integral part of the accreditation process.

City Build's EMS is part of an overall system that covers the entire Directorate of Cityworks. The EMS ensures that Cityworks activities and services conform to the Council's Charter for the Environment and associated objectives and targets. The EMS offers the effective identification of all Cityworks environmental impacts so that they can be tackled and reduced. The EMS helps to contribute to the council-wide objectives and targets.

Requirements

The EMS has been written in accordance with ISO 14001 (see diagram overleaf) and by progressing this to EMAS, Cityworks aims to involve all personnel in the Council's vision of a more sustainable city.

Environmental Policy & Planning

In order to develop the aims of Newcastle City Council's Charter for the Environment, and to contribute to the City Council's strategies, a thorough environmental review has been carried out. During the environmental review, the legal obligations of City Build have been identified and taken into account. A register of legislation has been produced that outlines the requirements of City Build. This register is reviewed on a regular basis to keep up to date with new legislation.

Implementation

City Build's management have nominated EMAS representatives to work alongside EMS support officers to drive the EMS forward for the individual operational units. These staff then identify training requirements and operational control procedures to address the environmental impacts that have been identified.

Checking/Corrective Action

The environmental impacts that have been identified within the EMS are regularly monitored – this has enabled the data that follows to be retrieved from the data collection system. To ensure that this monitoring is effective, the EMS is subject to internal audit. An internal audit team conduct a programme of audits to check that the EMS complies with the standard and that the EMS is effective. The findings of these audits are reported to City Build's management who take necessary action where required.

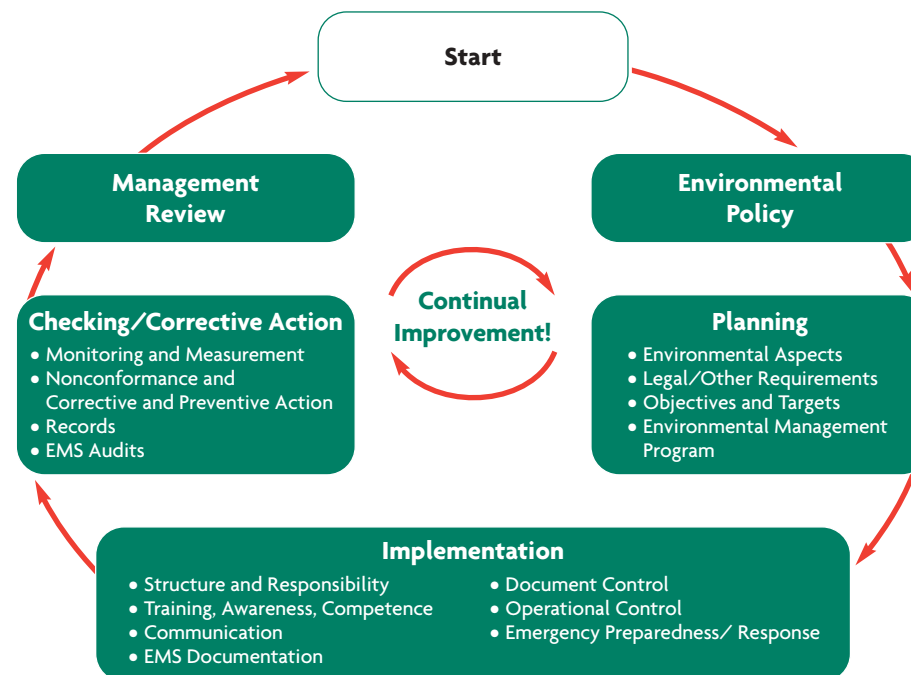
Management Review

City Build's Environmental Working Group meetings (EWG) take place regularly and offer opportunities to raise environmental issues. The outcome of these meetings are then acted upon or if there are wider issues, they are raised through the formal management review process. These management review meetings are conducted biannually and provide a health check of the entire EMS. Senior managers, EMAS representatives and EMS support officers attend these reviews and discuss the adequacy of the EMS. These meetings feedback into the planning stage and thus deliver continual improvement.

Through the above EMS, City Build has identified that the significant aspects they need to address are:

- the use of fuel for their fleet,
- the use of electricity, gas and water,
- the waste streams that they produce,
- the impacts associated with the materials that they purchase,
- the performance of the contractors and sub-contractors, and
- the amount of noise pollution they produce.

This is City Build's first environmental statement and the data that follows shall be used as baseline data for future reports.



Transport

City Build has approximately 310 vehicles that used 465,583 litres of various fuels during the financial year of 2001-2002. By burning these fossil fuels, City Build contributes to the pollution of the atmosphere and the depletion of finite resources. City Transport which provides a comprehensive fleet service and maintenance, have adopted an objective to replace all vehicles up to 3.5 tonne and registered before 1997, with dual fuel vehicles (a petrol driven engine with an Liquid Petroleum Gas (LPG) tank). Compared to petrol, LPG

emits around 12% less CO₂ and around 30% less oxides of Nitrogen (NO_x), Hydrocarbons (HCs) and Carbon Monoxide (CO). Compared to diesel there is around 90% less NO_x, 1/50th of particulates and only 1/500th of the ultra fine particles. The remaining heavier vehicles use Ultra Low Sulphur Diesel (ULSD) and are also fitted with an exhaust emissions reducing component. LPG was introduced in May 2000 as a pilot scheme; as a result of its success, City Build are now converting the majority of their fleet to LPG.

Vehicle filling up with liquid petroleum gas (LPG) from the tanks in the depot.



The impacts of City Build and how they are tackled *continued*

City Build have also begun a scheme whereby they allow staff to take their work vehicles home which has the double benefits of staff travelling to work in a less polluting vehicle and reducing traffic congestion by travelling straight to site.

The council also actively encourages staff to use more environmental friendly modes of transport by providing facilities and offers loans for bicycles.

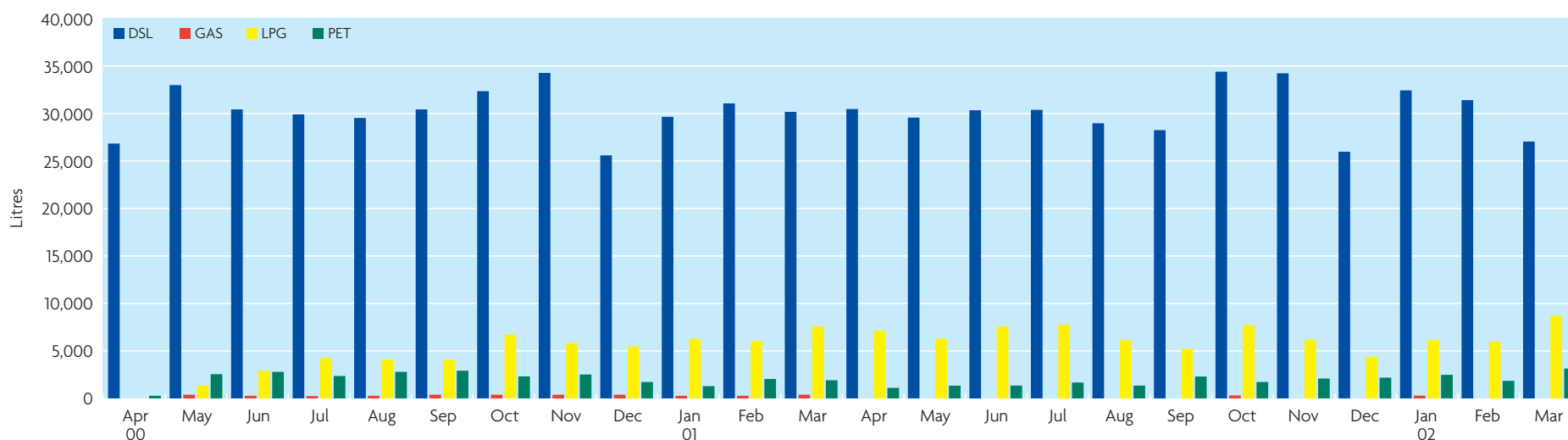
Future objective for 2002/03: to increase the use of LPG fuel, while reducing the use of Diesel.

Future objective for 2002/03:

To increase the use of LPG fuel, while reducing the use of diesel.

As the fleet conversion programme is extended it is anticipated that diesel consumption (DSL) will go down while LPG and petrol (PET) will increase.

Quantities of different fuels used by City Build 2000/2001 - 2001/2002

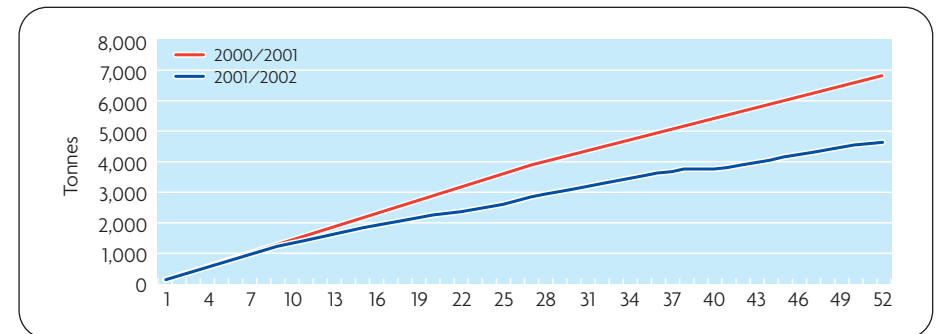


Waste

City Build produce an estimated 12,000 tonnes of building waste per year and, like most premises, also produces general office waste. Traditionally, most of this waste would be sent to landfill or incinerated which contaminates land and prevents potentially useful resources from being reused. City Build is committed to reducing the environmental impact of this waste, by following the four Rs, (Reduce, Reuse, Recover & Recycle), but primarily, what they have direct control over and therefore, their aim, is to reduce the amount of waste going to Landfill. They have a target of increasing their recycling percentage to 50% by the year 2010 . The challenge that City Build face is to deal with the diverse range of waste streams that are generated from the nature of the work they conduct. The key to this is segregation; some building waste streams can be recycled, and others have to be segregated for environmentally friendly, disposal. City Build segregate paints, wood, metal, glass, cardboard, brick/concrete, bituminous waste and hazardous waste from building activities. Office waste streams that can be segregated and recycled include paper, printer cartridges, cardboard and plastic cups.

The graph helps to show some of the progress City Build has made over recent years in reducing the tonnage of waste going to landfill. Further to these figures City Build used to carry their own waste directly to landfill sites. Over recent years they have adopted new methods of segregation, both on site and at the depots, to increase their overall recycling rate.

Waste to landfill via the Byker Transfer Station – City Build 2000/2001 - 2001/2002



Through diverting waste from the Byker Transfer Station, City Build has been able to increase the amount of waste recycled.



Yardman using the compactor to prepare cardboard for collection by recycling company.

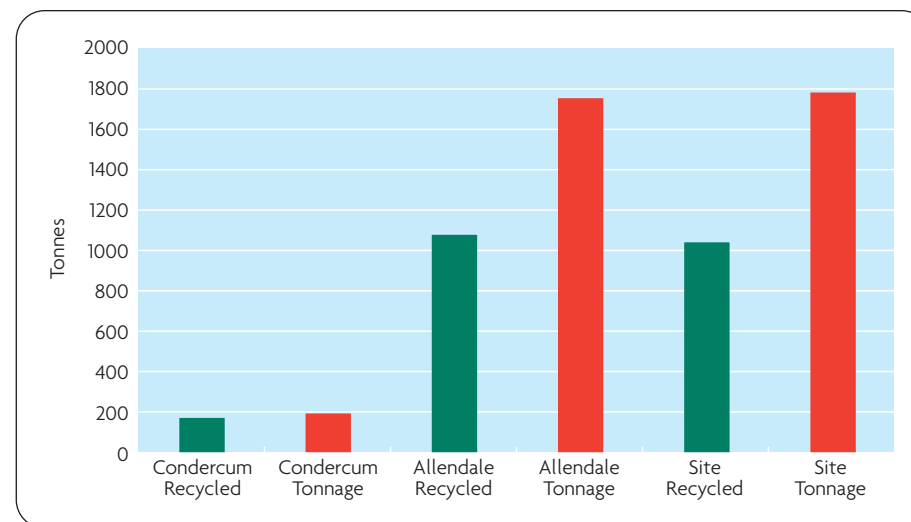
The impacts of City Build and how they are tackled *continued*

The graph opposite shows how much waste licensed contractors collect from the City Build depots and construction sites, against the amount of this waste that has been recycled.

City Build are keen to know what is actually done with their waste once they have sent it for recycling and have conducted a review of the major companies that collect their waste:

- Bricks, concrete and rubble are crushed to create a graded hardcore which City Build is able to purchase back and reuse,
- Timber is recycled to manufacture timber particleboard products,
- Metal is reprocessed in different ways, depending on the type of metal,
- Paper & cardboard are recycled to make a range of paper products,
- Glass is recycled to manufacture other glass products.

Tonnes of measured waste recycled from Condercum Road, Allendale Road and direct from sites, April 2002 - September 2002



Waste segregation at a City Build depot.

Future objective for 2002/03:

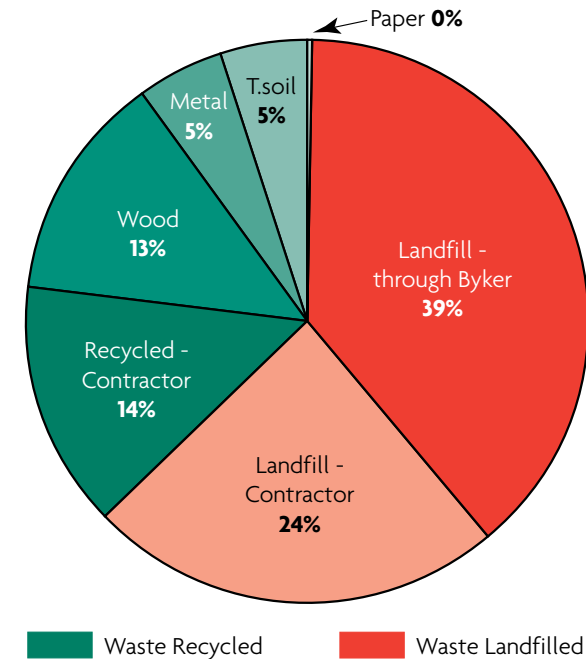
They have a target of increasing their recycling percentage to 50% by the year 2010.

The pie chart opposite shows the types of waste that City Build has been segregating and recycling and what they are unable to recycle. Over the last 6 months City Build have managed a recycling rate of around 37%, although this figure only takes into account those waste streams that can be measured. This acts as an account of the waste City Build measures.

Further to this, waste from plastic cups, printer cartridges and glass are all recycled, but are not quantified.

Waste streams not recycled and not measured include liquid paint, empty paint tins, all other office and any other hazardous waste that City Build may handle. Licensed contractors dispose of all waste streams.

Types of disposal by City Build (April 2002 - September 2002)



The impacts of City Build and how they are tackled *continued*

Energy

Newcastle City Council, like any large organisation, is a massive consumer of energy. The generation of this electricity can produce pollution and hazardous waste; the use of gas also causes pollution and uses limited fossil fuels and use of water uses energy and chemicals in the cleaning processes. The council, as a whole, consumed:

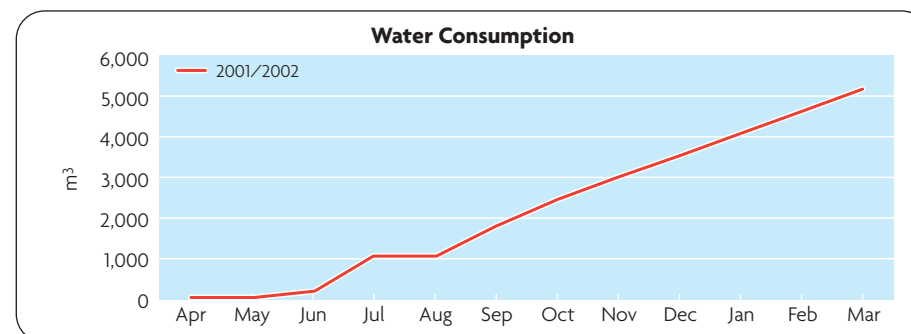
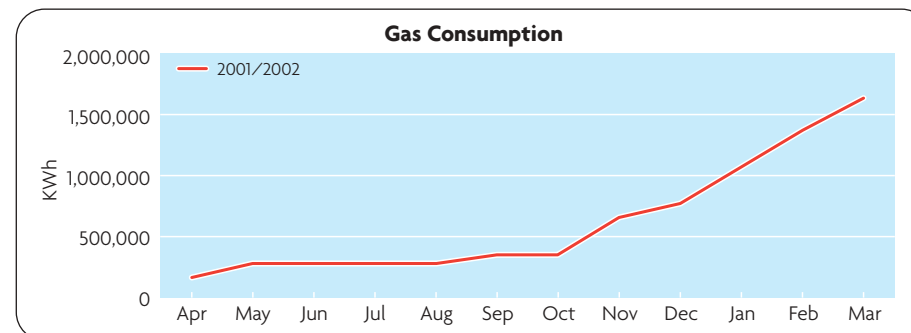
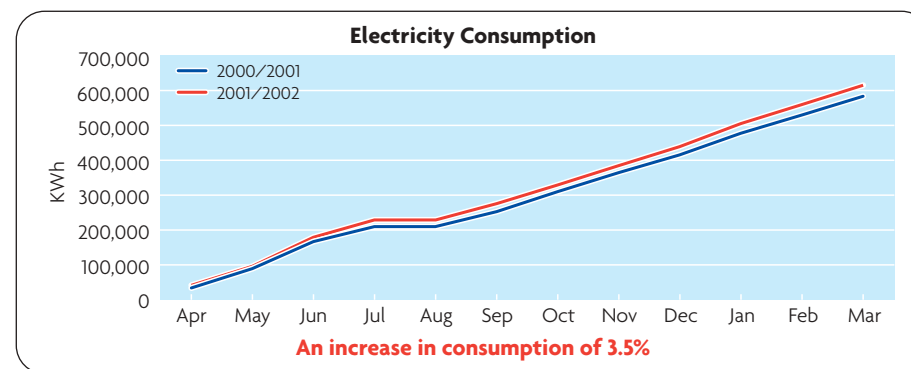
- £2,750,000 worth of electricity (47 GWh) – equivalent to the weekly electricity bill for 407,147 households (EEBPP, 2002),
- £3,100,000 worth of gas (235 GWh) – equivalent to the annual cooking requirements for 443,396 households (EEBPP, 2002),
- £800,000 of water (520,000m³).

The Council has set an overall target of 30% reduction of water, gas and electricity in all council occupied buildings from 2000 to 2010. City Build, as part of Cityworks, has adopted this target and set a target of 5% per year in the initial years. Much of the work in this field is co-ordinated by the Council's own Energy Centre, who monitor energy use in all council buildings through the use of Stark software, and have been able to provide the above council-wide consumption figures. The following gives an account of the two depots from which City Build operate.

Allendale Road

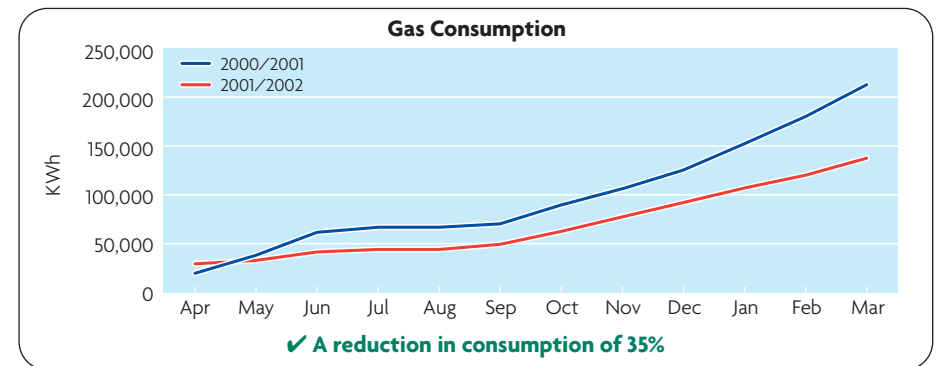
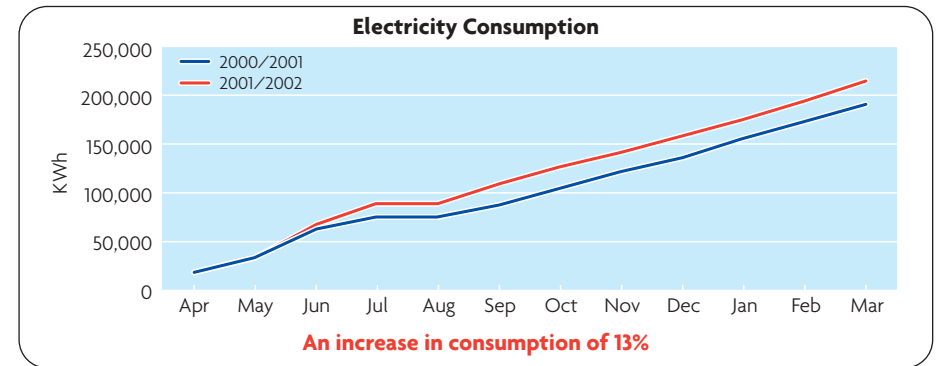
Allendale Road depot was occupied as a result of closing 9 satellite depots from across the city; overall this has reduced the amount of energy consumed, but has not been measurable. Due to the recent occupation of Allendale Road, full, accurate, historic data is not available for this site;

however, City Build have begun monitoring energy consumption and have presented the available baseline data below.

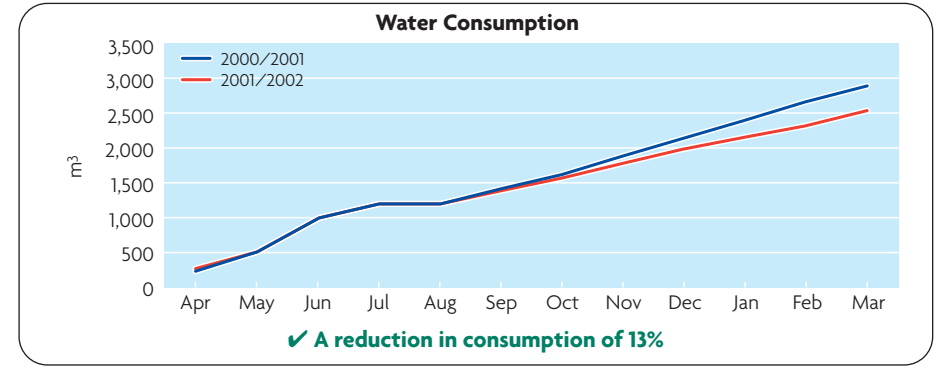


Condercum Road

Condercum Road has been occupied by the council since 1942 and has been monitoring energy consumption for some time. Due to the increased number of staff operating from this depot and the increased use of electrical equipment, electricity consumption has slightly increased. However, through close monitoring, the use of technology and carefully controlling consumption, Condercum Road have managed to reduce gas and water consumption to meet and exceed the 5% reduction target City Build set.



Future objective: To reduce electricity, gas and water consumption, at both sites, by 5% over the next financial year.



EEBPP (2002) Energy Efficiency Best Practice Programme
www.energy-efficiency.gov.uk

Purchasing and Contractors

The City Council can play an important role in driving the sustainability agenda by improving its own performance and translating that into its demands on suppliers. To this end Citybuy, the councils central purchasing unit, are seeking to reduce the environmental impact of goods and services consumed by the Council through influencing companies, bodies or groups with whom the Council deals.

Such influence can be brought to bear by a number of means such as environmental questionnaires, specifications or possibly within conditions of contract. Newcastle City Council's LA21 team holds a database on the performance of the Council's suppliers. 1519 of the largest suppliers have been issued with an environmental questionnaire; 1219 companies have completed and returned the questionnaire.

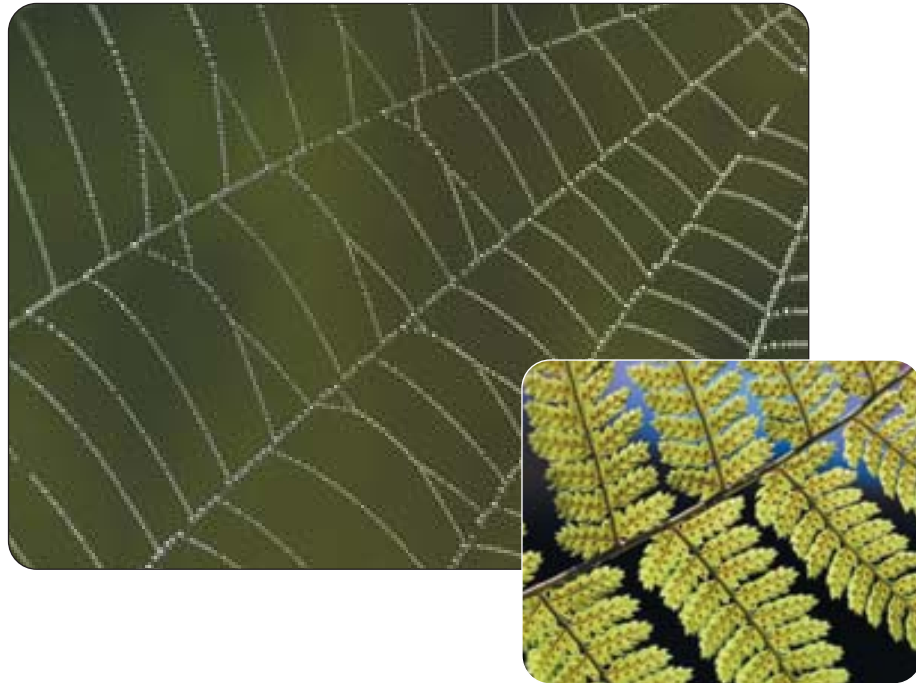
Results

1. Those who have an EMS	219
2. Those who have an externally validated EMS	92
3. Those who are seeking certification	100
4. Those who have an environmental policy	701
5. Those who have already signed the "Charter for the Environment"	130
6. Those who are willing to sign our "Charter for the Environment"	689

Out of the companies that hold contracts to supply City Build, 58% have an environmental policy and 19% have an EMS. These figures were correct as at October 2002.

Presently, all contracted suppliers are being reviewed against their environmental questionnaires submitted. From such an exercise it will be established how many of the current suppliers are able to adopt the City Council's environmental standards. Those companies that do not meet the Council's standards will be encouraged to do so. With regard to specifications, there is a need to educate Council staff who specify the goods that the Council procures, raising awareness that it is permissible to include environmental content. With regard to procurement, value for money remains the prime factor in awarding contracts; however, procurement staff will be trained to encourage awareness of such issues and in conjunction with appropriate specifications, environmental matters will become a more significant consideration when awarding supply contracts in the future.

City Build have minimal control over the specification of products and services that they use and in most cases are dependant on City Design, or even other directorates who award projects to City Build for completion. In many cases the goods and services they must use have already been specified; where clients specify green products, City Build are more than capable to deliver.



Biodiversity

Your Wildlife: The Newcastle Biodiversity Action Plan

Through providing the services, City Build can have a detrimental effect on the wildlife of Newcastle by disturbing habitats and species. Newcastle City Council has approved **Your Wildlife: Newcastle Biodiversity Action Plan**. The aim of this plan is to provide a framework with which the community and all organisations can work to protect and enhance our wildlife within the city. City Build uses Cityworks own Codes of Practice to ensure species and their habitats are protected.

Trees Newcastle (A tree strategy for Newcastle upon Tyne) has also been approved by the City Council. The Council needs to protect and care for our trees, as they play an important role in improving our quality of life. The Council also needs to make sure that when trees are removed, where possible, new trees are planted, so that future generations can derive the same enjoyment throughout the City.

Both of these will contribute to the sustainable development of our city.



The impacts of City Build and how they are tackled *continued*

Noise Management

City Build, being a construction organisation, create noise due to the very nature of the work they conduct; this can be both created onsite and from the depots. This noise can impact on the comfort of local residents and in extreme cases can lead to local residents logging an official complaint through Envirocall, (Citywork's 'first stop' call centre for environmental issues). The City Council also operates Repair Call, a service for tenants to report repairs and other complaints.

City Build aims to provide the best possible level of service at all times, but recognises that occasionally things can go wrong. **Their aim is to prevent any complaints from residents regarding noise from sites and the depots.**

When complaints are received, Cityworks do everything possible to sort out the problem quickly and efficiently. Under such circumstances there is a formal complaints procedure, which enable residents to lodge a complaint and for this to be dealt with as swiftly as is feasibly possible.

As part of City Build's strategy to reduce the impact of noise upon local residents, they take complaints very seriously and when a complaint was received relating to the noise from their Allendale Road depot, they asked residents if they would assist City Build in identifying exactly what the source of the disturbance was. Through this process, City Build has been able to identify the source of the disturbance and have now constructed a rubber platform to act as a noise suppression and thus reduce the disturbance to local residents. City Build have also changed their process of waste management to reduce this impact and have adopted technology and methods that are more environmentally friendly to their local residents.

City Build have also been able to reduce the noise from their Allendale Road depot by restricting locally supplied deliveries and preventing these from being made before 9.30a.m. Furthermore, they have limited access to the part of the depot that is most disturbing to local residents, by controlling the time that the most disturbing vehicles can operate. Staff are also asked to reduce the level of noise they make, by keeping radios to a minimum and not leaving their vehicles running.



This statement identifies the range of activities undertaken by City Build and sets out the ways in which their work impacts on the environment, with the opportunities available for improving their performance. City Build encourages the people of Newcastle upon Tyne to protect their local environment by open consultation on all schemes prior to start, and throughout the duration of the contract. The Environmental Policy ‘**Charter for the Environment**’ is available from the Civic Centre, displayed in council buildings and accessible at the website below.

Legal Compliance – There have been no occasions during 2001/02 whilst carrying out their activities that City Build have operated outside the law.

City Build management programmes, which show objectives and targets for 2002/03 are available on our website. The documents are also available in paper copy, upon request. The objectives and targets for 2002/03 will be reported upon in the interim update.

Who verified the statement

“Further to consideration of the documentation, data and information resulting from the company’s internal procedures examined during the verification process, it is evident that the environmental policy, program, management review (or audit procedure) and environmental statement meet the requirements of Regulation 761/01 (The EMAS Regulation)”

SGS United Kingdom

UK-V-0007

NACE Code: 75.2 – Provision of services to the community as a whole

Next environmental statement

The next full environmental statement will be published in 2005; however, City Build will be publishing an interim statement every year until the next full statement.

Contacts and further information

If you would like any further information or documentation regarding the EMS or any of the issues covered in this statement, please contact City Build’s EMAS representative:

Keith Pratt (City Build’s Environmental Representative)

Cityworks

Allendale Road

Newcastle upon Tyne

NE6 2SZ

Tel: 0191 278 3320

keith.pratt@newcastle.gov.uk

If you would like to speak to Newcastle City Council, Cityworks staff about the technical side of implementing EMAS, then contact them at

cityworksemas@newcastle.gov.uk

Or try Newcastle City Council’s website at

www.newcastle.gov.uk/envcharter

