



---

# Environmental Statement 2002/03

annual update to the 2001 Report



We have written this as an **update** to the 2001 Environmental Statement report, with which this document should always be presented so that readers can find further explanations of the environmental effects of the Council.

If you do not have a copy of the 2001 Statement please phone 020 8770 6380.

## **Contents**

	Page
<b>Corporate Goal</b>	2
<b>Sutton Council's Environmental Policy</b>	3
<b>Reducing the Council's Impact on the Environment</b>	4
<b>Improving Sutton's Environment</b>	11
<b>EMAS System</b>	23
<b>Verifiers Statement</b>	24

# Corporate Goal

During 2002/03 we reviewed the Council's Corporate Goals. From 2003/04 we have five corporate goals, which help us realise our Vision ***'to build a community in which all can take part and all can take pride.'***

One of these goals is to **'Promote Environmental Sustainability'**, which has three objectives.

1. We will reduce the environmental impact of transport and improve the Borough's streets and public spaces.
2. We will develop policies that protect and improve the Borough's built and natural environment.
3. We will reduce the environmental impact of the Council's use of materials and resources and promote greener alternatives in the community.

This annual Environmental Statement update is produced in accordance with the Council's Eco-Management and Audit Scheme (EMAS) Registration. It sets out the progress in achieving our environmental objectives.

**Sutton Council's Website – [www.sutton.gov.uk](http://www.sutton.gov.uk)**

For local environmental information, A-Z recycling guide,  
events and projects see the  
**Sutton Future Network website – [www.thecei.org.uk](http://www.thecei.org.uk)**

# Sutton Council's Environmental Policy

Sutton Council has adopted a set of policies which reflects its concern for the quality of the local environment and the need to conserve the finite resources of our planet. These policies also establish a proper balance between short-term economic and the longer term environmental needs of our community.

Sutton Council is committed to operating a management system called Eco-Management and Audit Scheme (EMAS) throughout all Council Groups.

This means that the Council implements policies aimed at continuous improvement of environmental performance in all areas and complies with all relevant environmental requirements including the partnership Local Agenda 21 goals. These policies also ensure that all suppliers to the Council recognise and address environmental matters relating to their products and services.

The Council aims to prevent, or limit, environmental accidents where possible and contingency procedures are in place to minimise the effects of these if they do happen.

As part of EMAS, staff and councillors receive training on environmental issues to help foster a sense of responsibility for the environment at all levels. In this way, we can make a significant contribution to a sustainable, healthy and balanced environment.

## **Sutton Council has a responsibility and will...**

- a) protect and enhance the open spaces, waters, trees and hedges under its control to maintain and enhance their biodiversity value.
- b) encourage a positive attitude to the local environment from individual residents, groups and organisations and encourage the expansion of environmental education;
- c) act and campaign against pollution, e.g. of air, water and land
- d) act and campaign against anti-social levels of noise;
- e) aim to reduce and discourage litter as part of "the Greener, Cleaner Borough" ethos;
- f) discourage waste and encourage the recycling of materials and use recycled materials wherever practicable;
- g) improve energy and water conservation in Council buildings and encourage this elsewhere;
- h) promote the development and implementation of renewable energy sources;
- i) encourage a responsible and informed attitude to the use of artificial fertilisers, pesticides and herbicides on Council-owned land and elsewhere, and aim to reduce the use of harmful fertilisers, pesticides and herbicides;
- j) aim to protect the public from the dangers incurred through the use, transport and storage of dangerous and toxic substances, e.g. asbestos and radioactive materials;
- k) encourage healthy eating and provide the widest circulation of information on the subject and discourage the use of unnecessary additives, particularly within the Council's services;
- l) encourage the use and improvement of public transport and provide improved facilities for disabled people, pedestrians and cyclists;
- m) consider favourably employment which enhances the Borough's environment;
- n) promote allotments and horticulture;
- o) where necessary, introduce new planning policies to support these aims;
- p) encourage community participation in this programme and work with other organisations committed to the same goals;
- q) monitor the rate at which green areas are diminishing in the Borough and endeavour to compensate for this;
- r) produce an annual report on the state of the environment so that the implementation of these policies can be monitored;
- s) seek to minimise the impact on the environment in terms of materials used by the Council in all its operations.

# Reducing the Council's Impacts on the Environment

## Travel

**Target: Implement the Green Travel Plan to:**

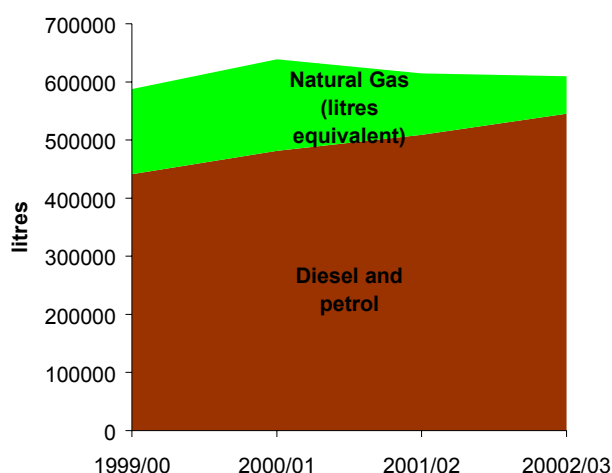
- a. increase the percentage of staff (non-school) not driving to work from a baseline of 26% in 1999 to 35% by March 2005**
- b. minimise mileage covered on Council business balanced with the need for visiting and outreach activities**
- c. use more sustainable methods and fuels for our fleet vehicles (always replacing vehicles with the best practicable environmental fuel option).**

**change to target:** This target has been improved since last year by quantifying the target for travel to work.

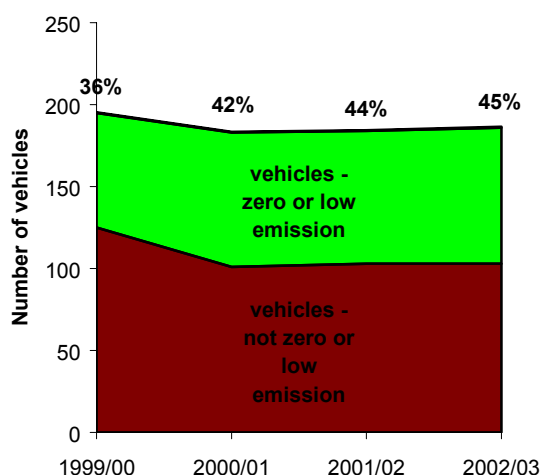
We carried out a further Staff Travel Questionnaire in March 2003 as planned. However, at the time of writing the analysis of the data is not yet complete.

We have established a Car Share Club based in Sutton, in partnership with a national car hire company. Total membership in 2002/03 was 54, of which 41 were Sutton Council staff or Councillor users.

### Fleet fuel use



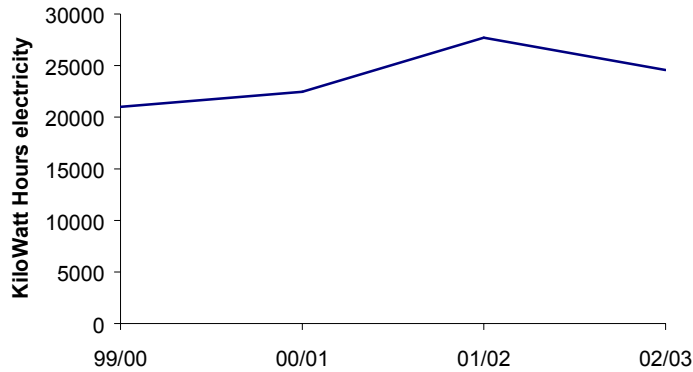
### Fleet using low or zero emission or low emission fuel



Whilst the percentage of our fleet capable of running on natural gas or electricity has remained at around 45%, there have been some problems which have caused the reduction in the use of natural gas. The natural gas powered refuse freighters and welfare buses have had some technical problems, so we have had to hire in diesel powered vehicles to cover times

when our own fleet is out of service. The gas re-fuelling station site has suffered from vandalism, and had to be closed several times. This has meant that staff using gas/petrol dual fuelled vans have had to fill up with petrol.

### Fleet electricity consumption



We have had some problems with loss of charging capacity in the batteries of our electric vehicles. This has meant they have spent considerable time 'off' the road whilst undergoing repair, and so the total electricity used by this fleet has declined.

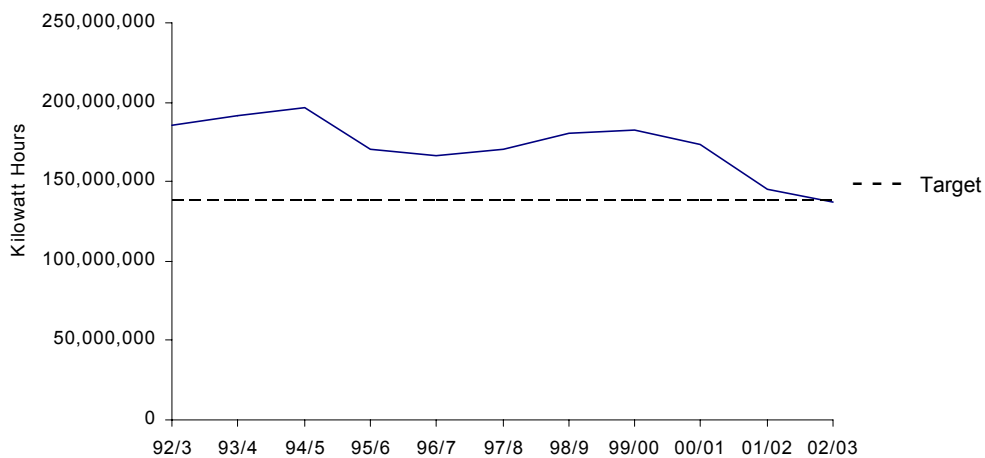
### Staff Private Car Mileage

Due to a change over in the contractor running the Council's payroll service it has not been possible to obtain the total staff car mileage data for 2001/02 or 2002/03.

### Energy

**Target: Reduce Council energy consumption by 25% by March 2005 compared to 1992/93 levels**

#### Council Premises Energy Use (weather adjusted)



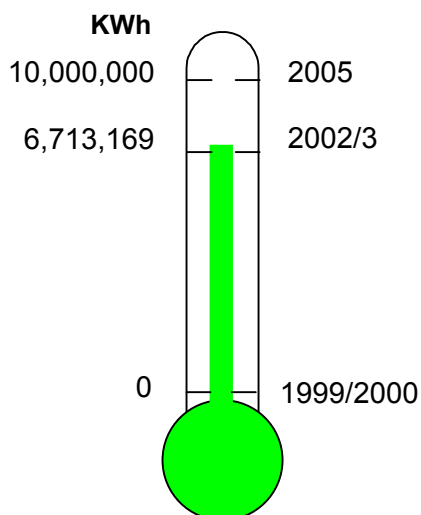
This graph suggests the target has been met early. However the trend may be exacerbated by a change in which premises are included in the data. The above target relates to Council premises such as offices, care homes and libraries where we have direct control of our energy consumption. We do not have this control over schools which manage their own finances. However, energy data from some schools has been unavoidably included in the data collection process over the years. In recent years more schools have 'opted out' of the Council's financial systems, which also means that their energy data is not processed through the Council's system. This will cause an apparent reduction in total energy consumption.

During the past two years we have replaced the old oil powered boiler at the Council's main headquarters building, Civic Offices, with a more efficient gas boiler, giving us a 15% energy saving. Other improvements include: replacement boiler at Stonecourt offices, increased loft insulation, installation of external door closers and a new heating time switch at the Ecology Centre, and a new control panel for heating pumps and the air handling unit at the Denmark Road offices.

From 2003/04 we will be able to present data which is based on actual gas and electricity meter readings. We will consider using this more reliable data to set a new base line and target.

**Target: Increase by 10,000,000KWh the amount of 'green energy' purchased by the Council (including schools) by March 2005 compared to 1999/2000 levels**

**Green energy purchased**

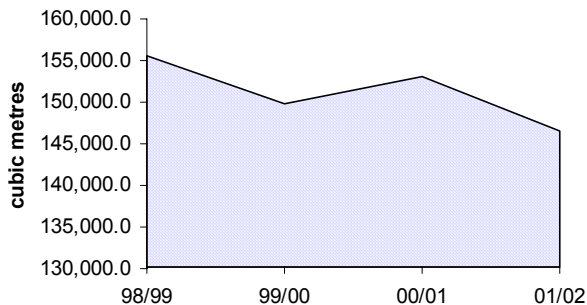


There has been no further increase in the amount of electricity purchased from renewable resources in the past two years.

## Water

**Target: Reduce water consumption in Council owned properties by 15% by 2005 compared to 2000/01 levels.**

### Water consumption



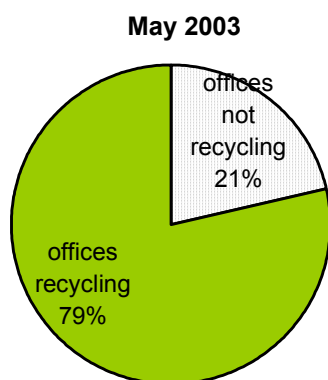
We have been unable to present data for 2002/03. The water supply company used to provide us with our water consumption data on the internet, but they withdrew this service last year. We hope to be able to source this data from the water treatment company in the future.

We made a major improvement to water use efficiency during 2002/03 by replacing pipework at Westmead Allotments and refurbishing water troughs at Spencer Road Allotments. Without the 2002/03 data we do not know what effect this work has had on our total water consumption.

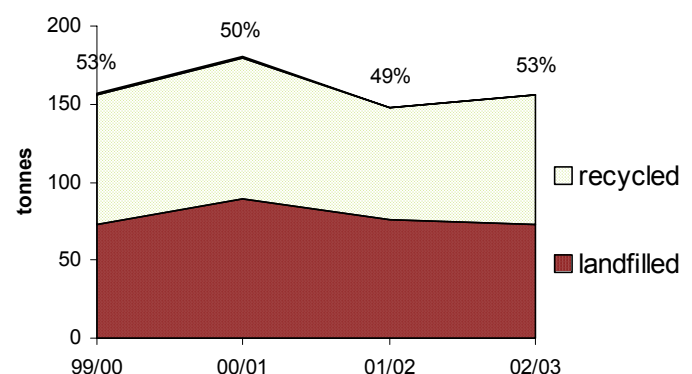
## Waste

**Target: Reduce the total amount of waste produced in Council buildings by 20% by March 2005.**

### Percentage of offices recycling



### Waste at the Council headquarters office



Of our 56 office locations, 44 are known to be recycling their waste to some extent. This is an 11% increase on the numbers presented in the last Environmental Statement.

The graph on the right above is based on the paper and cardboard recycled from the Civic Offices. In addition, some staff voluntarily take their cans, glass and plastic bottles to the public recycling banks outside the office. So the actual percentage of waste diverted from landfill is higher than illustrated here. This shows that a consistently high level of recycling can be achieved from a normal office. We have used some European funding to purchase equipment to weigh waste from our other offices. This will give us a better idea of the amounts of waste being landfilled and recycled from Council buildings other than Civic Offices.

## Purchasing

**Target: Add a minimum of one new purchasing policy each year to the Environmental Purchasing Policy.**

We have drafted a new component to our environmental purchasing policy. This is to:

*'... use water-based paints wherever possible. Where paints containing solvents are used then these should contain a low\* percentage of Volatile Organic Compounds.'*

\*by 'low' percentage we mean the industry standard of 'less than 8%'.

This is in addition to our purchasing policies on ozone depleting chemicals, sustainable timber, paper, pesticides and asbestos.

**Target: Increase the percentage of materials purchased that satisfy the Environmental Purchasing Policy**

Since the last Environmental Statement was published we have reviewed Council purchasing procedures and have closed the 'Central Purchasing Unit' which used to buy paper, stationary and cleaning chemicals for the majority of Council services. This means it is not possible to gather the data which was presented in the last Statement, regarding how much we spent on materials purchased through the 'Central Purchasing Unit' in line with the Environmental Purchasing Policy.

To improve the way the Council purchases, we plan to employ a Centralised Procurement Co-ordinator. Their role will be much larger than the old 'Central Purchasing Unit'. Implementation and monitoring of the Environmental Purchasing Policy will be integral to this.

During 2002 we used European funding to commission an independent review of our sustainable timber purchasing policy [to purchase Forest Stewardship Council (FSC), or similar, trademarked timber] and to investigate the extent to which this Council policy is being respected and carried out.

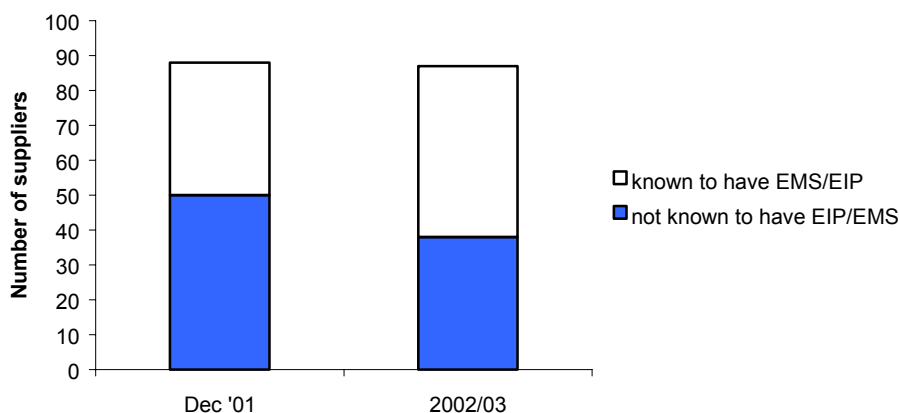
The following is a summary of the findings:

*The Council is sending out documentation to its contractors to request evidence that FSC (or similar) timber be used. Contractors are trying to request evidence from their timber suppliers that FSC timber is being supplied. However they are "...receiving irrelevant or semi-relevant certificates from suppliers.." which when forwarded to the Council do not appear to preclude the contractor from being awarded the contract. Only one local timber supplier holds the FSC 'Chain of Custody' certificate. The Construction and Property section do not have the staff time to effectively monitor whether FSC timber is actually purchased by the contractors.*

We have agreed that we need a new system involving 'environmental staff' working with Construction and Property to monitor whether FSC timber has been used. There may be value in promoting the FSC Chain of Custody certification for timber suppliers who supply our contractors. It is also likely that a future 'partnering' approach to working with construction contractors will give more scope for us gain contractors' compliance with our policies.

**Target: Ensure all relevant suppliers who provide over £100,000 of services in a year have an Environmental Management System (EMS) or Environmental Improve plan (EIP)**

#### Suppliers who met our environmental standard requirements



The above graph shows that 56% of our suppliers in 2002/3 complied with our requirements for them to be running their business in an environmentally responsible manner. An additional 54 companies who used to supply the Council before 2002/03 have also met our requirements.

In addition to these requirements, we expect our staff letting contracts worth over £100,000 to assess the environmental impacts relating to the contract and to write appropriate environmental specifications into the contract documentation. Our internal auditors investigated how well Council services were complying with this. Their findings were as follows:

*...Whilst contract specific consideration to environmental methods and materials is typical, contractors' environmental standards are not comprehensively pursued..... Methods adopted to monitor supplier compliance with contract environmental requirements are informal.*

*Whilst there is general awareness of this initiative throughout the Council and identification within EMAS .... The inconsistent application of requirements would suggest that regular re-training and a central scheme monitoring function is necessary.*

Annual training on the Council's environmental purchasing and contracting policies has been in place since 2000. This will continue, but it will also be re-offered to staff who have been on the training once before. As an interim measure, a checklist has been issued to all staff known to be responsible for letting contracts.

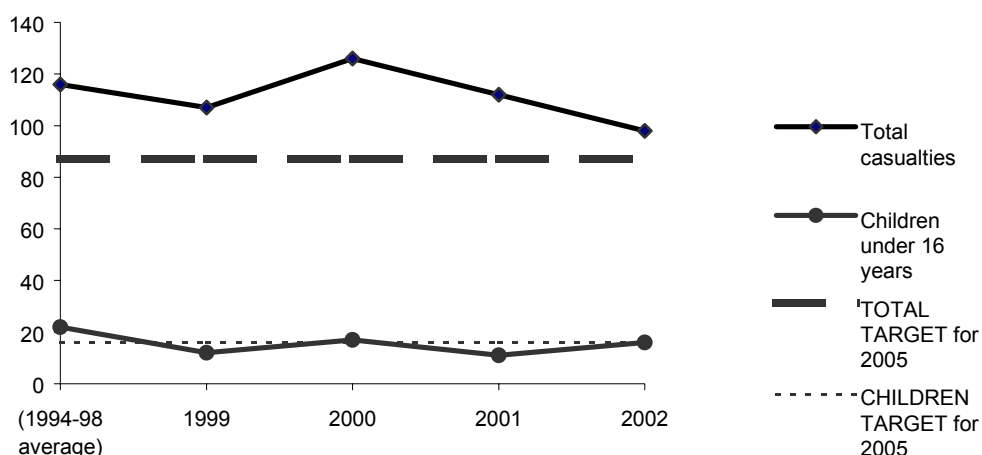
The internal auditors suggested the new 'Centralised Procurement Co-ordinator', when in post, should develop a central record of procurement by which compliance with environmental contracting policies may be monitored.

# Improving Sutton's Environment

## Transport

**Target: Reduce the number of people and the number of children killed or seriously injured (KSI) in road accidents by 25% by 2005, compared to 1994-98 average. National targets are to reduce the number of people KSI by 40% and children KSI by 50% by 2010.**

### Road traffic casualties – killed or seriously injured



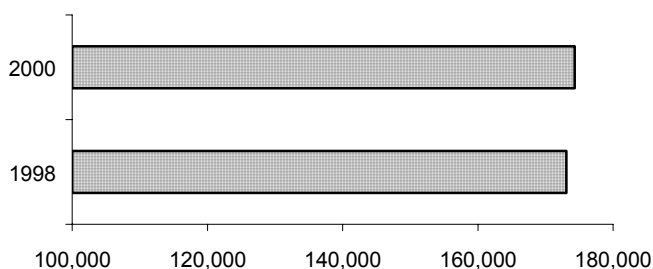
In addition to a range of traffic calming measures which we have implemented, we have one 20mph zone in the Worcestor Park area.

Sutton Council provides on-road cycle training for 10-11 year olds. This is a course of 5 two hour sessions which are geared towards today's road environment. During Summer 2002, 482 children were trained.

**Target: Produce a road traffic reduction plan aimed at reducing road traffic growth in Sutton by one third, and achieving zero growth in town centres by 2011 based on 2001 growth levels.**

*change of target:* This target has been amended to bring it in line with the Mayor of London's Transport Strategy.

### Amount of Road Traffic (excluding buses and bicycles) in Sutton



We carried out a 'snap shot' survey of traffic volumes in October 2001 but the data has not yet been analysed.

The most recent local transport plan produced by the Council was the Interim Local Implementation Plan 2002-03, which builds upon the aims and objectives of our 1999 Borough Sustainable Transport Strategy. Following publication of the Mayor's Transport Strategy for London 2001, we are still awaiting guidance from Transport for London on the format that future Borough transport plans should take.

<b>Target: Increase the percentage of urban area within 400m of access to frequent public transport</b>
---

*change of target: this has been amended slightly to ensure it is measurable*

When we have measured the baseline we will be able to set the target.

- ★ The former Council subsidised 'hoppa' bus route S5 was incorporated into the London Bus route 463 which has been extended significantly.
- ★ The S7 'hoppa' bus route started in November 2002, and serves an area of the Borough previously deficient in access to public transport.
- ★ We have been working with Transport for London to look at the feasibility of Tramlink being extended to serve St. Helier and Sutton.

We also aim to make other transport improvements.

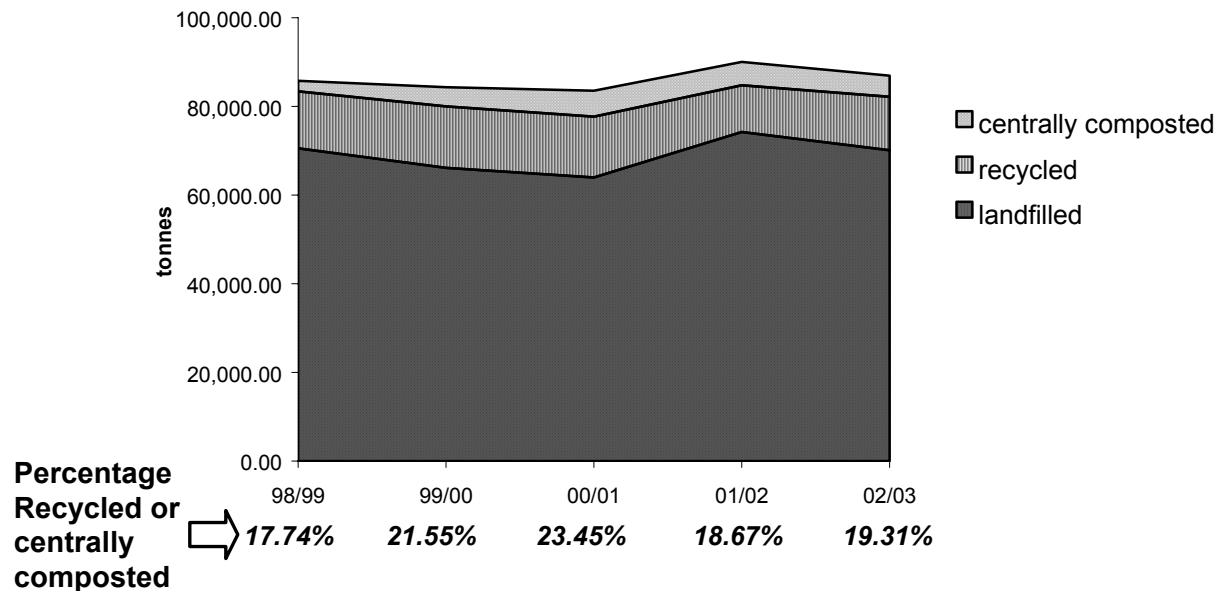
Contributions from developers in the Borough have been used in 2002/03 in the following projects:

- ★ Sutton railway station improvements
- ★ Cycleways
- ★ Pelican crossing on Stanley Park Road
- ★ Beddington Lane Link Road

## Waste

**Target: Increase the percentage of household waste recycled or composted centrally to 36% by 31/03/2006.**

**Amounts of household waste landfilled, recycled, and composted**



There are two main reasons for the decline in the percentage of household waste which is recycled since 2000/01.

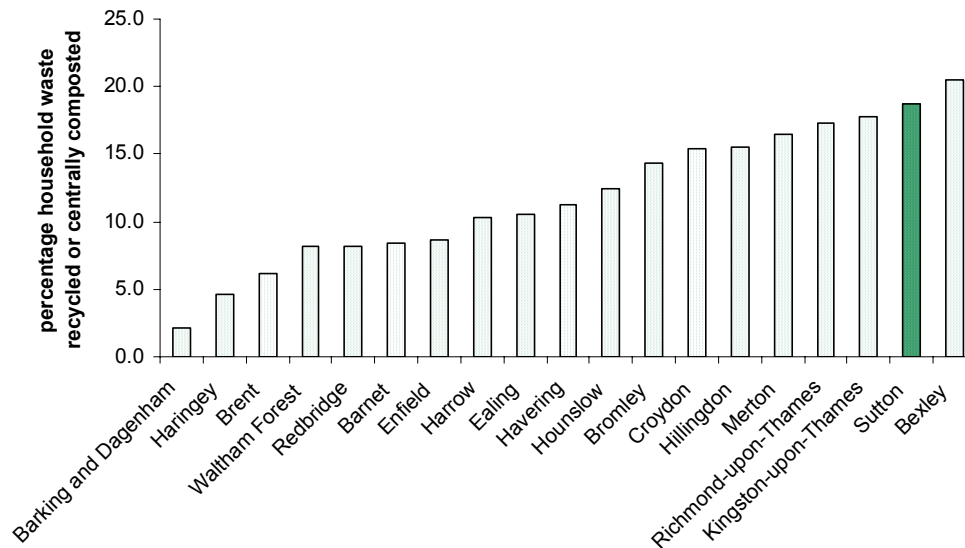
There is a lack of understanding and misuse of the dual wheeled bin system by some residents. The green wheeled bin should be used for paper, cardboard, food and drinks cans and plastic bottles only. These different materials are sent to a special sorting centre. Residents are:

- putting items such as car batteries or large metal objects in their green bin. These can be recycled if residents take them to the public 'amenity site' but cannot be processed by the machinery at the recycling sorting centre.
- contaminating their green bin with food waste, nappies or other dirty items. These ruin the recyclable materials and mean that they cannot be sorted without causing health problems for workers at the sorting centre.

The contractor at the sorting centre has been rejecting up to 50% of the green bin materials they receive due to the above types of contamination. We do not consider that the contamination levels are high enough to warrant this level of rejection.

We are investigating changing the contract to give incentive to the contractor to process a maximum amount of recyclable material. The Council is also employing a public relations consultant to run a three year recycling promotions campaign. By December 2003 we will have a Municipal Waste Management plan in place.

## Comparison of Sutton's recycling rate with other Outer London Boroughs for 2001/02



Data source: [www.capitalwastefacts.com](http://www.capitalwastefacts.com)

## Land

**Target: Ensure 80% homes built each year from 2001/02 are on brownfield sites (i.e. previously developed land, including conversions)**

In 2002/03 **100%** of developments were on brownfield sites.

**Target: Reduce the total area of open space deficiency in the Borough ....**

We have negotiated making 12 hectares of open space accessible to the public by applying our planning policies to a housing development on the old Queen Mary's Hospital site and a further 8 hectares as part of a planned housing development on old sewage works in Worcestor Park. Part of the Worcestor Park development is within an area of the Borough defined as deficient in open space.

However, until the Worcestor Park open space has been made available to the public, the total area of **open space deficiency** in the Borough remains at **675 hectares**.

**.... and seek to improve the quality of existing provision through partnerships with the private sector....**

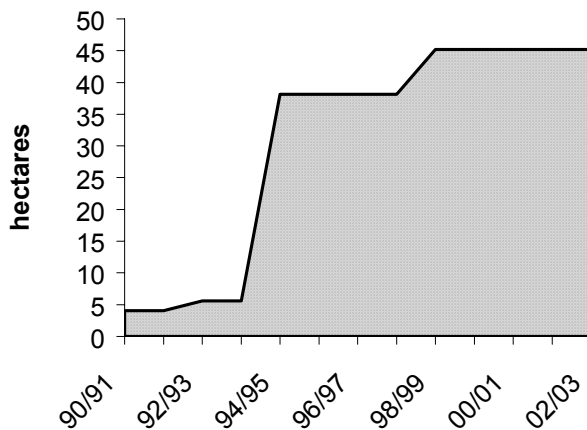
The **total area of open space** in the Borough is **1249 hectares** (not including allotments). The higher figure quoted in the previous Statement is thought to be incorrect, there have not been any changes to the total area of open space.

Where appropriate the Council seeks to secure contributions from developers that will benefit the environment or community. In 2002/03 these contributions were used to improve the **quality of open space** in the following areas:

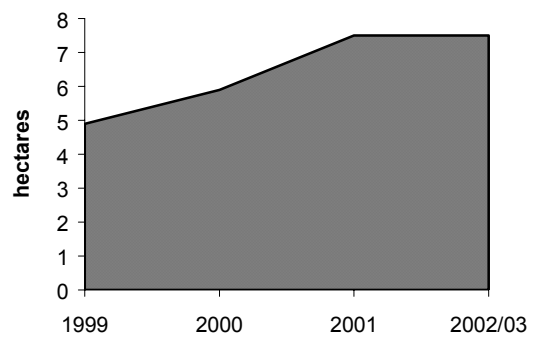
- ★ Elm Ponds
- ★ Duke Street and Benhill allotments
- ★ Watercress Park
- ★ Manor Park

..... and aim to provide 1 hectare of Statutory Local Nature Reserve per 1000 of the population.

**Area of designated Statutory Local Nature Reserve**



**Area of meadows in Parks**



The area of 'Statutory Designated' nature reserve per 1000 of the population in Sutton remains at **0.26hectares**.

With the lack of an Ecology Officer in post, work has been focussed on the Chalk Habitat Action Plan. During 2002/03 the Council brought in the following funding into the Borough for improving nature conservation:

- ★ Heritage Lottery funding – to develop two new nature reserves
- ★ English Nature funding – will be used to develop four new nature reserves over the next three years
- ★ Aggregate Levy Sustainability Fund – was used to build a Sand Martin nesting bank and will be used to create a reed bed in summer 2003.

## Built Environment

There is no real change to the data presented in the 2001 Environmental Statement on 'built environment'. Two of the 'Areas of Special Local Character' were slightly expanded in 2002.

The Unitary Development Plan, which set out the planning policies for the future development of the Borough, was approved in March for formal adoption in April 2003. This contains a new chapter on 'Built Environment' with policies to promote a high quality of design, respecting local character and enhancing landscape quality.

We have introduced a new target for built environment:-

**Target: Produce planning guidance on Good Design in Sutton by March 2005**

Work has yet to start on this target. We also plan to write planning guidance on 'Designing out Crime' and 'Sustainable Design and Renewable Energy'.

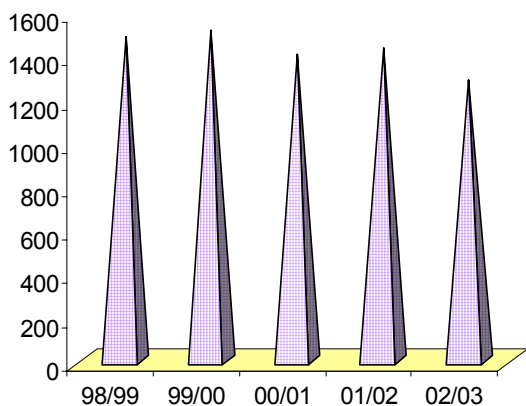
## Noise

**The target is under review.** The ultimate aim is to reduce the amount of noise in the Borough which has a negative effect on people's well being.

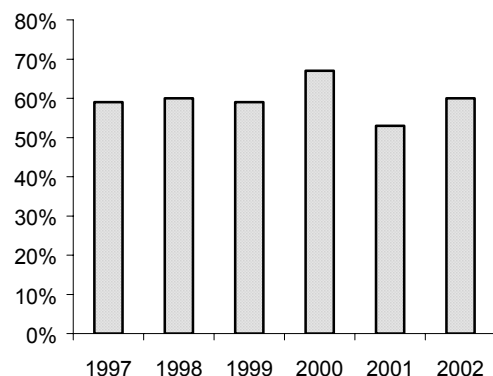
We would hope that our promotional work to help prevent noise problems arising would result in less noise complaints. However we recognise that if we promote our noise complaints services, then we would expect to receive more complaints. It is also important to be successful at solving the noise problems which our 'customers' report to us.

A target, or targets, which help us measure our success at acting and campaigning against anti-social noise will be set for 2003/04.

### Number of Noise Complaints



### Percentage of customers satisfied with the outcome of our noise investigations.



## Land contamination

**Target: By 2007 to have reviewed the Borough to identify and prioritise contaminated sites for remediation by the 'appropriate person'.**

Progress with the initial evaluation of the Borough has been slowed by staff shortages.

**Number of sites identified for inspection: None**

## Air Pollution

**Target: To improve local air quality by meeting national air quality targets for particulates (PM10s) and Nitrogen Dioxide (NO2)**

PM10s (or 'particulates') are very small particles less than 10 microns in size. NO2 is a gas.

Action on this target will focus on the Air Quality Management Areas of the Borough along parts of the A232 and A237, as illustrated in the 2001 Environmental Statement. These areas are where 'particulates' and nitrogen dioxide levels are likely to exceed government targets. We will write an Air Quality action plan for these areas by December 2003. We will continue to review and assess air quality across the Borough and will write further air quality action plans as necessary.

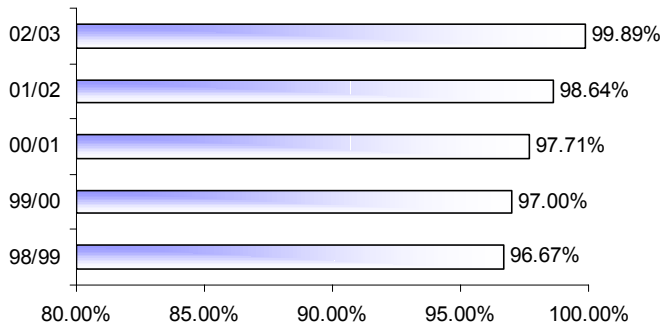
We started monitoring levels of 'particulate' and nitrogen dioxide pollutants on the A237 in Wallington in August 2002. This means it is not possible to present annual data for 2002/03 because the Wallington monitoring station has not been running for a full year.

We are no longer carrying out continuous monitoring of air pollution levels in Sutton Town Centre, graphs for which were presented in the 2001 Environmental Statement, because it is not defined as an Air Quality Management Area.

## Litter

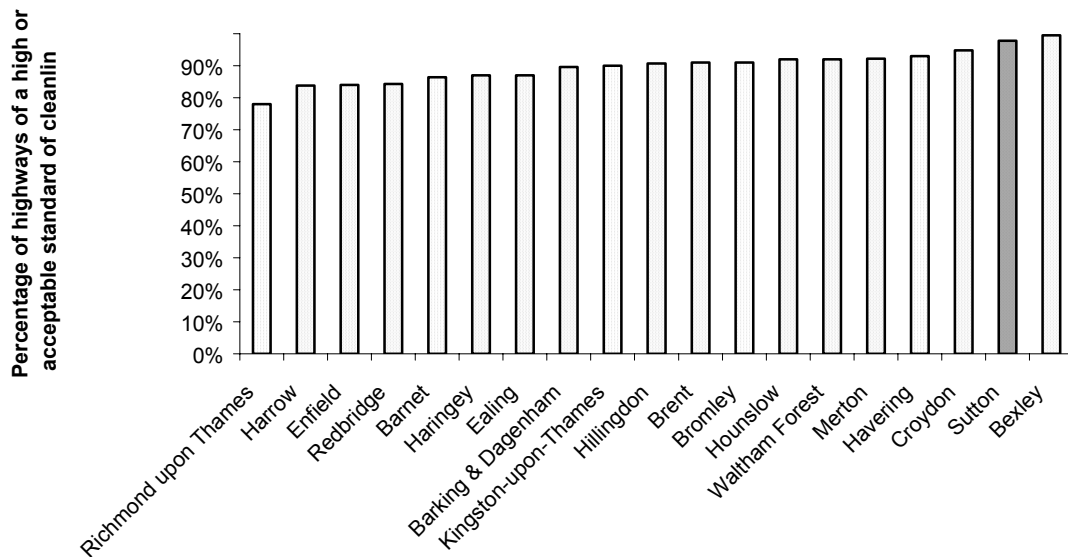
**Target: Increase the percentage of highways that are either of high or acceptable levels of cleanliness to 99% by 2005, from 97.5% in 2000/01.**

### Percentage of streets with high or acceptable levels of cleanliness



The target has already been exceeded. The Council has achieved this by targeting resources at roads which historically were scored at a lower cleanliness grade.

### Comparison of street cleanliness with other 'Outer London' Boroughs for 2000/01



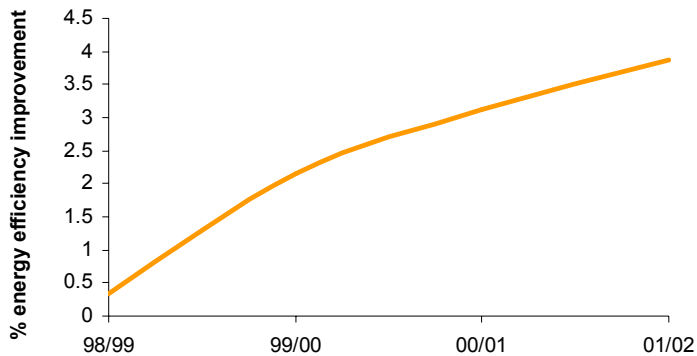
Data source: [www.audit-commission.gov.uk](http://www.audit-commission.gov.uk)

## Energy

**Target: Continue to reduce emissions of greenhouse gases by improving energy efficiency of domestic properties by 1% each year against a 1996 baseline.**

**target change:** The previous target referred to 1% reduction in Carbon Dioxide emissions. We have amended this so that it more accurately reflects the data we are required to collect by the Government's Home Energy Conservation Act.

### Cumulative energy efficiency improvements of domestic properties on 1996 levels

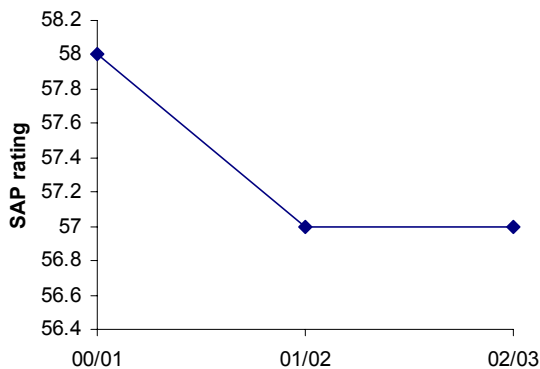


We refer households to a government organisation to receive 'Warm Front' grants for energy efficiency. Our target is to make 3000 referrals between 2003/04 and 2004/05.

In 2002 we sent a 'Home Energy Survey' questionnaire to all households with the electoral registration form. 30,000 surveys were returned. From these we identified 1700 households which would qualify for a Warm Front grant for home energy improvements. We will contact these households to promote this grant opportunity to them.

**Target: Increase the average energy efficiency of the Council's dwellings to 60 SAP(Standard Assessment Procedure) rating points by 2005**

### Council Housing SAP rating



This rating has declined because we demolished some very large blocks of 1960s flats on the Roundshaw housing estate, which were no longer an acceptable quality of housing. However, despite their faults, they were very energy efficient homes, so the loss of these means that the **average** energy efficiency of the remaining Council owned housing is now lower. In fact we have made significant energy efficiency improvements to this housing, funded by money from energy supply companies.

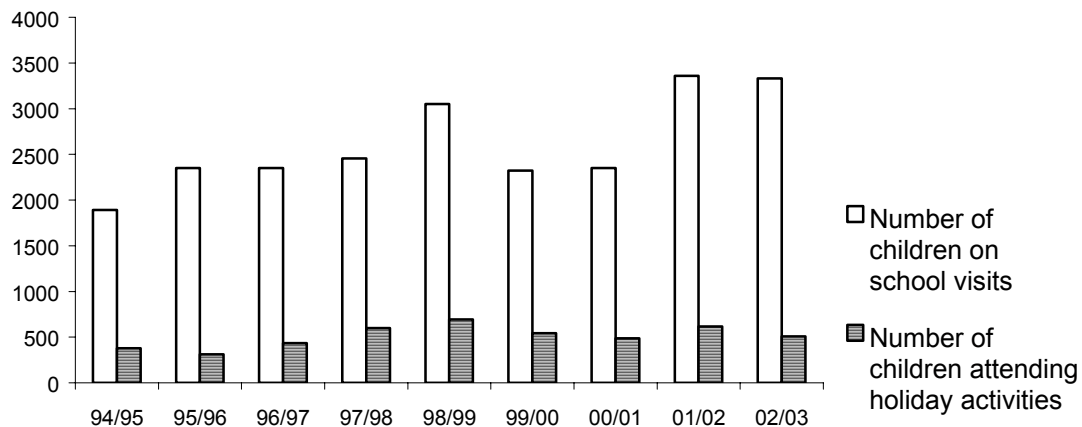
## **Environmental Awareness and Involvement**

**Target: Promote environmental sustainability in the community through education and involvement to increase understanding of sustainability issues and the Council's aims and vision.**

### **Environmental awareness and education:**

- ★ Youth services ran a recycled sculpture competition which culminated in a shop front display of the entries in the Sutton Town Centre.
- ★ Sutton Central Library have a permanent environmental leaflets display. In addition they presented monthly exhibitions featuring environmentally friendly gardens, the Environmental Fair, and 'green Christmas'. Children's library activities included a focus on re-using materials and wildlife.
- ★ The Heritage Service ran three events related to the environment of the River Wandle.
- ★ Council office receptions and other buildings open to the public are expected to display environmental leaflets. An internal audit found this was not as good as it could be. Improvements will be made to the system for providing these buildings with examples of what leaflets are available for display.
- ★ Environment Team had stalls at the Environmental Fair and Family Learning Weekend.
- ★ Environment Team ran the Walking to School campaign in Autumn 2002.
- ★ Environment Team provided exhibitions for Civic Offices reception.

## Environmental Education at Sutton Ecology Centre



In 2001/02 and 2002/03 a record number of school classes visited the Ecology Centre. This is due to the promotion of 'DIY' teaching opportunities for school classes at the Centre. These are days when teachers can bring their classes to the Centre and run their own classes with minimum input from Ecology Centre staff, and for a low charge. Later in 2003 we will expand services by taking Ecology centre lessons out to schools.

## Community Environmental Work

In Sutton the community engagement aspect of Local Agenda 21 is branded as Sutton Future Network. Sutton Council has continued to help fund and take part in this network which is facilitated by a local charity, the Centre for Environmental Initiatives (CEI).

**Raising awareness and understanding. CEI annual targets:** 3 Sutton Future Network events, 2 editions of an environmental newsletter, up to date Sutton Future Network website, 12 local newspaper articles, 1 leaflet, 1 exhibition

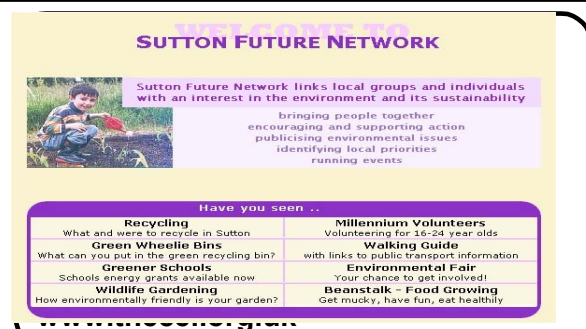
Events during 2001/02 and '02/03

- ★ Global Warming lecture
- ★ Environmental Fair 'Buy Green' theme information zone
- ★ Government Green Paper on Planning – consultation seminar
- ★ Recycling v. Incineration debate
- ★ Johannesburg Earth Summit & 10 years celebration
- ★ Home Energy Efficiency & Solar Heating event

7000 copies of 'Future News!' circulated

Composting leaflet produced –2002

Set of exhibition panels on 'Buy Green' and 'Recycling'.



Sutton Future Network website launched in 2002 – for local events, information and projects.

Sutton Future Network monthly column established in local Guardian newspaper – 2002.

**Community involvement projects. CEI annual targets:** bring in funding and manage projects, assist with and support other projects and groups.

Developments in 2001/02 and '02/03.

- ★ Sutton Future Network development. Brought in 3 year funding – to increase environmental awareness and community involvement.
- ★ Millennium Volunteers. Managed 2000-02 and 2002-04 Government funded projects. Over 120 16-24 year olds participating in local community activity including ecology and environmental projects.
- ★ Beanstalk Project. Carried out National Lottery funded research of this CEI food growing project to enable future project development.
- ★ Supported: Environmental Fair, Greener Schools Support Network, Farmers market, Local Exchange and Trade System, Sutton Rail Users Forum, Walking Map, Solar Club



[www.thecel.org.uk/recycling](http://www.thecel.org.uk/recycling)

A-Z Recycling Directory  
created on-line in 2002



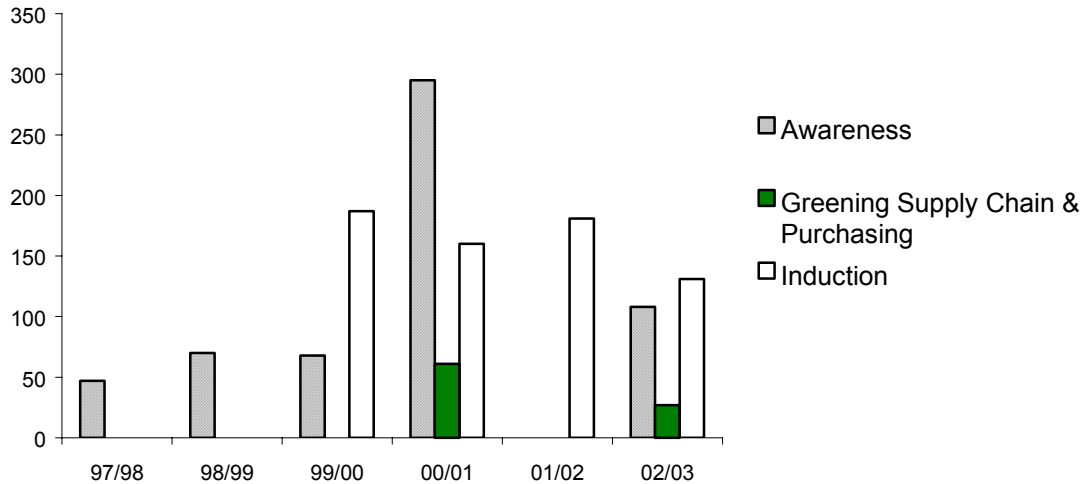
Recycling sticker competition  
for primary schools - 2002

Other partnership projects which are managed by other organisations, and which contribute to the goals of Sutton Future Network, are highlighted below.

- ★ The BioRegional Development Group have been working with the Council and 'Smart Moves' to establish a car share club as part of a new housing development in Melbourne Road. This builds on BioRegional's existing car share club membership at their Zero Energy Development in Beddington (BedZED).
- ★ Tree Wardens scheme - volunteers working with Sutton Council Parks. Established a new programme of work.
- ★ Sutton Furniture Project – a local charity, was re-established in 2002 to provide second hand furniture to families in need.
- ★ Sutton Nature Conservation Volunteers – working with Sutton Council on practical conservation tasks has continued.

# EMAS System

## Number of staff receiving environmental training.



### System Improvements

- ★ At the suggestion of the EMAS Verifiers we have started 6 monthly Corporate EMAS System review meetings. These meetings pick up issues which were not being reviewed by the Environmental Co-ordination Group.
- ★ We have changed our style of internal EMAS audits, so that instead of focussing audits on individual Council Services, we audit an environmental 'theme' for which the auditors will investigate one or more services. This system has delivered more useful findings.
- ★ A new corporate EMAS procedure has been devised with the Corporate Strategy Unit to ensure that the EMAS monitoring system is used to collect the data needed at the appropriate time for reporting on the Council's environmental objectives.

### Targets for further system improvement

- ★ Completion of documented definitions for calculating the data against each target in the Environmental Statement.
- ★ A brief explanation of EMAS on the Council's website and access to an electronic version of the Environmental Statement.
- ★ Expansion of the current 'EMAS Tips' in Council internal newsletters, to an environmental information cascade system to keep staff EMAS Representatives informed. This could include the publishing of the Intranet EMAS pages which have been drafted.

## Verifiers Statement

This Environmental Statement was verified by DNV Certification (Accreditation Number UK-V-0004) which is accredited by the United Kingdom Accreditation Service (UKAS).

Date of Validation: August 2003

