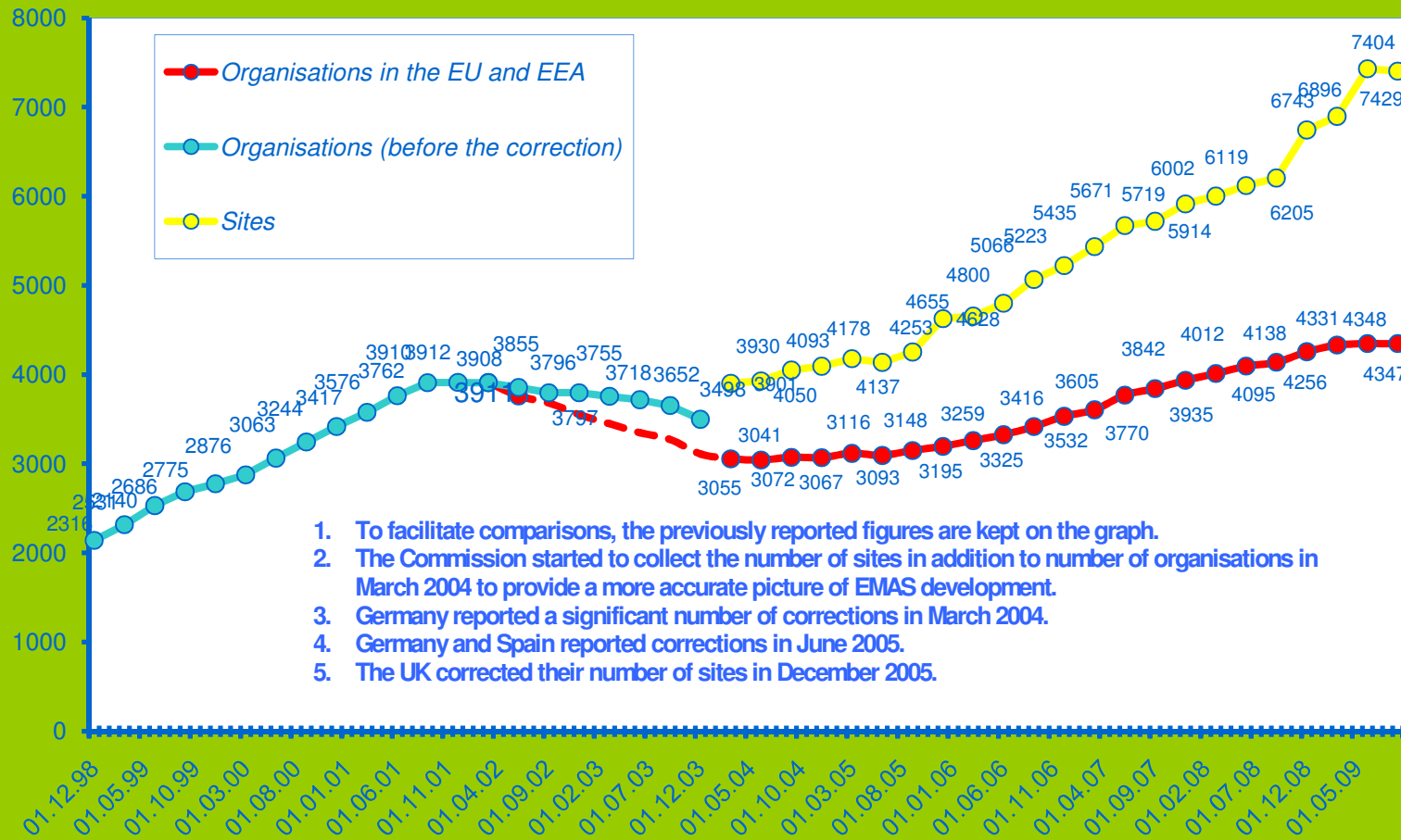




EMAS STATISTICS

EVOLUTION OF ORGANISATIONS AND SITES

Quarterly Data
28/10/2009



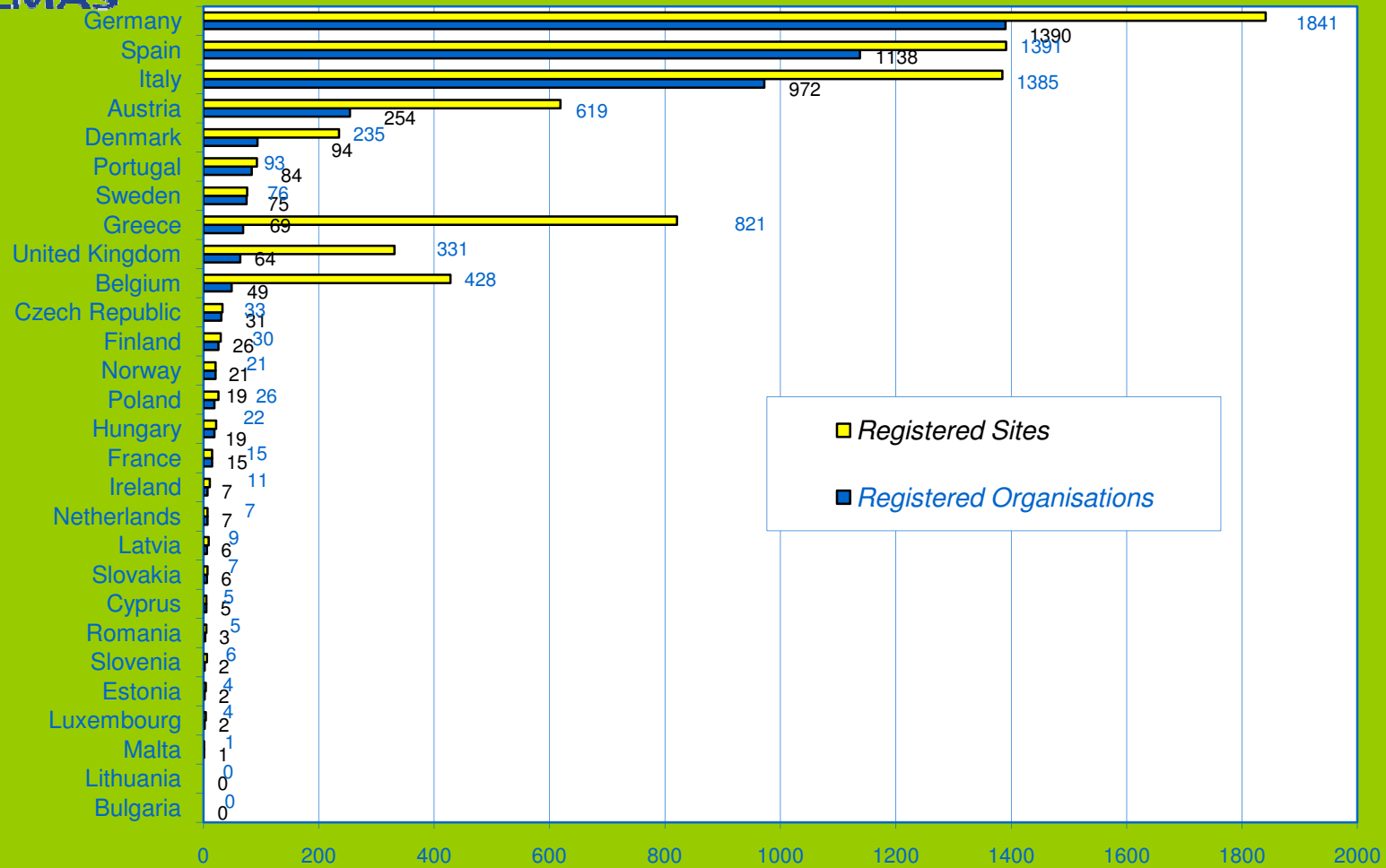
1. To facilitate comparisons, the previously reported figures are kept on the graph.
2. The Commission started to collect the number of sites in addition to number of organisations in March 2004 to provide a more accurate picture of EMAS development.
3. Germany reported a significant number of corrections in March 2004.
4. Germany and Spain reported corrections in June 2005.
5. The UK corrected their number of sites in December 2005.



EMAS

EMAS ORGANISATIONS AND SITES

28/10/2009





Organisations Per One Million Inhabitants

28/10/2009

