



GEOLAND

GMES products and services, integrating EO monitoring capacities to support the implementation of European directives and policies related to 'land cover and vegetation'

GEO-INFORMATION SERVICES FOR BETTER MANAGEMENT OF NATURAL RESOURCES

GEOLAND has been set-up to underpin the priorities of the Global Monitoring for Environment and Security (GMES): "Land Cover Change in Europe", "Environmental Stress in Europe" and "Global Vegetation Monitoring".

Within eight sub-projects (6 observatories and 2 core services), the 57 geoland partners developed products and services, utilising available earth observation resources in combination with in-situ measurements, and integrating them with existing models into preoperational geo-information services. These services support international, European, national and regional authorities and institutions in better management of natural resources and decision-making related to water quality, nature protection, Kyoto-process and food security issues.

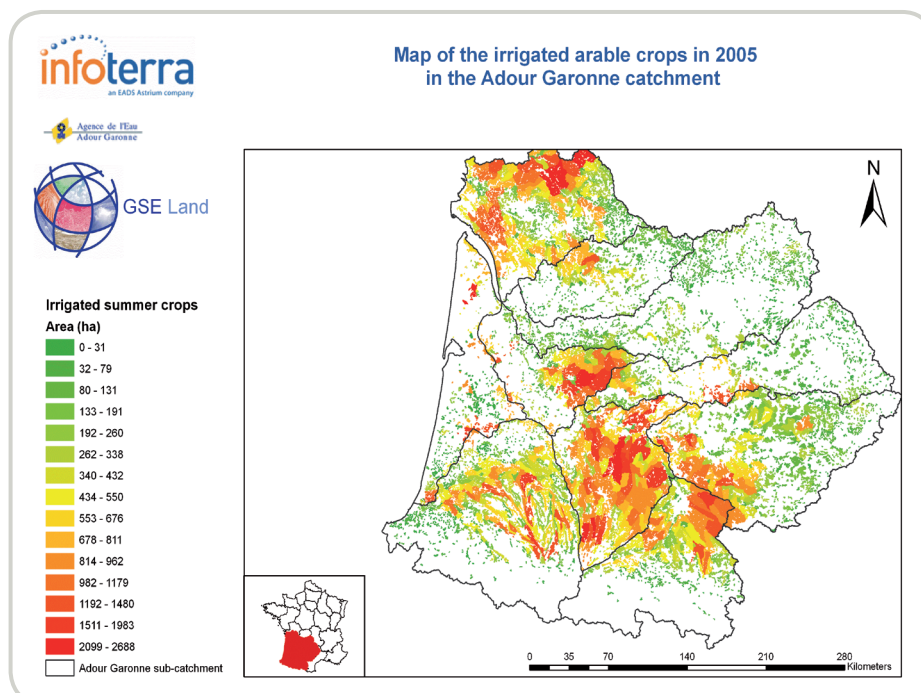
The project was structured into three regional and three global observatories, each of them supported by a core service providing basic geo-information inputs. An operational scenario was established to define the geo-information infrastructure and satellite technology requirements to achieve a fully operational service. The GEOLAND service development and demonstrations were closely linked to user organisations which were driving and reviewing each step and then accepting the results after integration into their own environment.

The user community involved more than 100 user organisations ranging from international to local coming from 24 EU Members States and candidate countries. 18 organisations even joined the consortium as full members.

SUCCESS OF GEOLAND PRODUCTS

A range of GEOLAND sub-tasks succeeded to attract additional funding to advance downstream service integration with user organisations (e.g. using local user funds); exploit synergies with other GMES services (e.g. Atmosphere, Ocean, Risk Management); and support large-area demonstrations in Europe (through the European Space Agency's GMES Service Elements programme), China (through the EuropeAid Asia Information Technology and Communications project) and at global scale (Global Daily Burnt Area project of the Joint Research Centre). A transition phase addressing both CORINE Land Cover and first high-resolution layers has been initiated by the European Environment Agency and its member states as "Fast Track Service Precursor" (2006 – 2007).

95 products for the six application fields and two core services have been developed and thoroughly assessed for their maturity. The final proof-of-concept was achieved during the GEOLAND life-time for approximately two thirds of the products.



GEOLAND

GMES products and services, integrating EO monitoring capacities to support the implementation of European directives and policies related to 'land cover and vegetation'



LIST OF PARTNERS

- Agenzia per la Protezione dell' ambiente e per i servizi tecnici, Italy
- Alterra bv, The Netherlands
- Amt der Vorarlberger Landesregierung, Austria
- Austrian Research Centers GmbH, Austria
- Commissariat à l'énergie atomique LSCE, France
- Consiglio Nazionale delle Ricerche, IREA, Italy
- County Administration Board of Dalarna, Sweden
- Delphi Informations-MusterManagement GmbH, Germany
- European Centre for Medium-Range Weather Forecasts, International Organisation
- European Topic Centre on Terrestrial Environment, International Organisation
- Geoville Informationssysteme und Datenverarbeitung GmbH, Austria
- German Aerospace Center DFD, Germany
- HG Geo Data Solutions, Germany
- Infoterra France SAS, France
- Infoterra GmbH, Germany
- Infoterra Ltd., UK
- Ingenieursbureau voor Environmental Analysis and Remote Sensing bv, The Netherlands
- Institut Cartogràfic de Catalunya, Spain
- Institut Français de l'Environnement, France
- Institut National de la Recherche Agronomique, France
- Institute of Geodesy and Cartography, Poland
- Inst. de Investigacao Científica Tropical, Portugal
- Instituto de Meteorología, Spain
- JOANNEUM RESEARCH Forschungsges. M. b. H., Austria
- Joint Research Centre of the European Community, International Organisation
- Landesamt für Natur und Umwelt Schleswig-Holstein, Germany
- Leeds Metropolitan University, UK
- MEDIAS-France, France
- Mediterranean Agronomic Institute of Chania, UK
- Météo-France Centre National de la Recherche Scientifique, France
- Metria, Sweden
- National Agricultural Research Foundation – Forest Research Institute, UK
- Natural Environment Research Council, UK
- Netherlands Geomatics & Earth Observation B.V., The Netherlands
- NOVELTIS, France
- Norsk Regnesentral, Norway
- Österreichisches Institut für Raumplanung, Austria
- PUMA Task Team (EUMETSAT), International Organisation
- Pöyry Environment, France
- Remote Sensing Solutions GmbH, Germany
- Royal Netherlands Meteorological Institute, The Netherlands
- Space Research Institute of Russian Academy of Science, Russia
- Spot Image SA, France
- Swedish Environmental Protection Agency, Sweden
- Swedish University of Agricultural Sciences, Sweden
- Thuringian State Institute for Wood, Hunting and Fishing, Germany
- Tragsatec Tecnologías y Servicios Agrarios S.A., Spain
- TU Vienna, Austria
- Umweltbundesamt (Fed. Env. Agency), Austria
- UN Environment Programme, Division of Early Warning and Assessment, International Organisation
- University of Bonn, Germany
- University catholique de Louvain, Belgium
- University of Trieste, Italy
- University of Freiburg, Germany
- University of Karlsruhe, Germany
- University of Vienna, Austria
- Vlaamse Instelling voor Technologisch Onderzoek VITO, Belgium

COORDINATOR

Infoterra GmbH
88039 Friedrichshafen
Germany
<http://www.gmes-geoland.info/>

CONTACT

Alexander Kaptein
Tel: +49 754 584 377
Fax: +49 754 581 337
E-mail:
alexander.kaptein@infoterra-global.com

PROJECT INFORMATION

GEOLAND: GMES products and services, integrating EO monitoring capacities to support the implementation of European directives and policies related to 'land cover and vegetation' Integrated Project
Contract no: SIP3-CT-2003-502871
Starting date: 01/01/2004
Duration: 39 months
EU contribution: € 9.993.340
Estimated total cost: € 16.800.000

