

"Science Enterprise Challenge: - changing the culture at UK universities"

Some perspectives from
Bob Handscombe,
University of Sheffield and
Chair, UKSEC

History of UK SEC



UKSEC established as informal network of 12 centres

Mid-2000

UKSEC gets first member of staff to support exchange of best practice

August 2003

Formalisation of UKSEC as a national organisation

March 2004

February 1999

DTI releases £25 million for 8 centres

July 2002

SEC round 2: a further £15 million. Now 13 centres and 65 universities



§ Gala celebration of
UKSEC national
business plan
competition, 2005

(working, national bpc)

port network for UK Higher Education staff
lating enterprise and entrepreneurship
e business community

§ Slide courtesy of
Scottish Institute
for Enterprise

edited courses, clubs, competitions,
)



The
University
Of
Sheffield.

Innovative Enterprise Education in the UK

§ The influences?

ü Some reflections from WRCE and Sheffield



The characteristics of entrepreneurship?

- § Innovative, flexible, dynamic, risk-taking, creative and growth orientated
 - § Be confident of ability to seize opportunities (Stevenson/Gumbert)
- § Expect surprises
- § Initiative to adjust to change, imaginative, flexible, creative, willing to think conceptually, capacity to see change as an opportunity. (Bygrave)



- § Research led, technology based
- § Self-reinforcing cycle
- § Student / faculty interaction

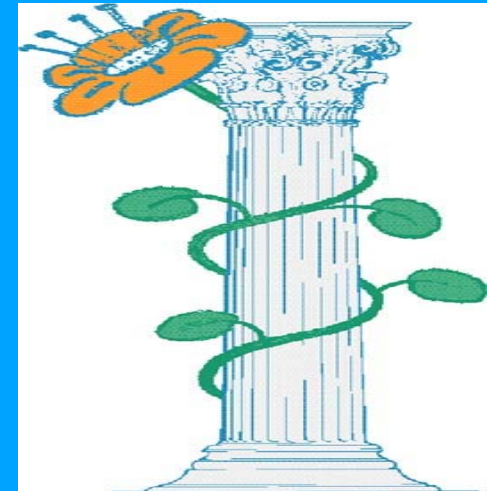


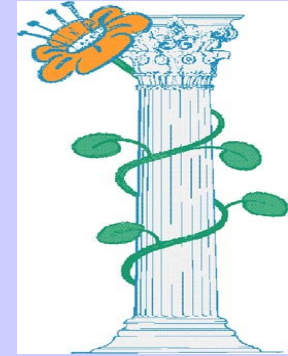
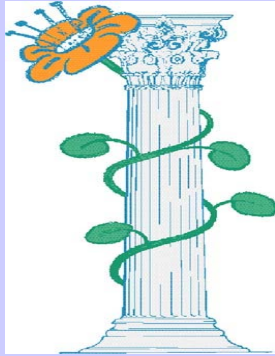
The
Cambridge-MIT
Institute



- § 'FEEL' (Allan Gibb, Univ of Durham)
- § a learning approach that gave students an immersion in an enterprise process.
- § successful enterprise learning?
 - ü organise knowledge around solving problems not around functional paradigms
 - ü practice learning from different sets of people
 - ü transfer the learning into reality of life

The Boyer Commission on Educating
Undergraduates in the Research University
REINVENTING UNDERGRADUATE
EDUCATION:
A Blueprint for America's Research
Universities
Publication Date: 1998





“Many students graduate having accumulated whatever number of course is required, but still lacking a coherent body of knowledge or any inkling as to how one sort of information might relate to others. And all too often they graduate without knowing how to think logically, write clearly or speak coherently. The University has given them

too little that will be of real value

beyond a credential that will help them get their first jobs.

And with larger and larger number of their peers holding the same paper in their hands even that credential has lost much of its potency”



The
University
Of
Sheffield.

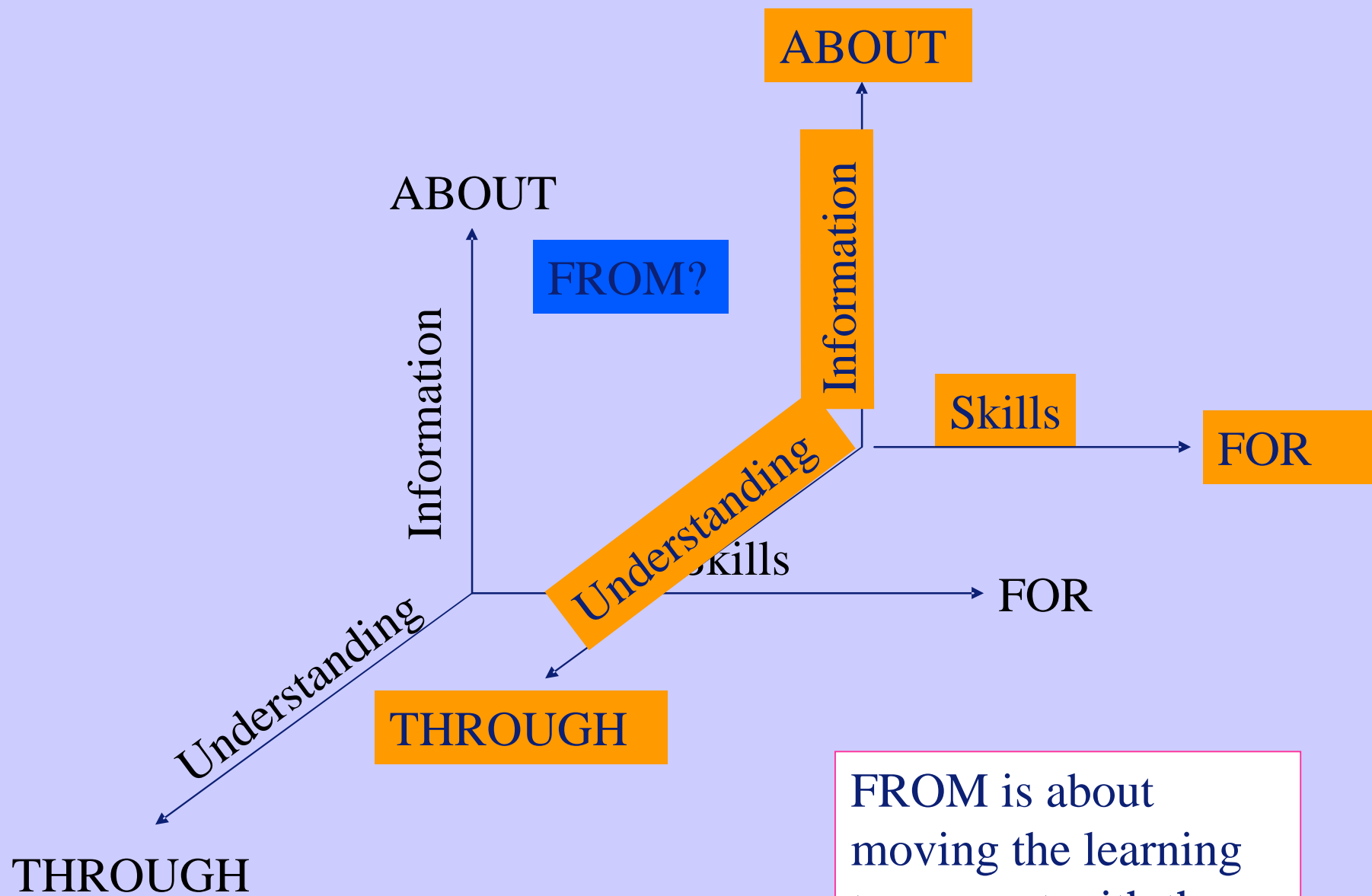
Innovative Enterprise Education in the UK

§ The results?

§ White Rose Centre for Enterprise as a case study

- ü *(Leeds, Sheffield and York, Science Enterprise Challenge, £2.9M grant, Contract secured Oct 1999, Enterprise in the SET curriculum - 70%, Growth in exploitation business - double, Bid expectation of sustainability)*
- ü *In curriculum modules, extra curricular support, spinout and start ups*
- ü *Embedding approach*





Changing the culture at UK universities – the trajectory challenges



Government offers additional funding, but there are consequences

Research more focused on its application

Teaching more focused on 'how to get' and 'how to use' rather than just the knowledge

What advice would we give to other universities trying to create an entrepreneurial culture amongst staff and students?

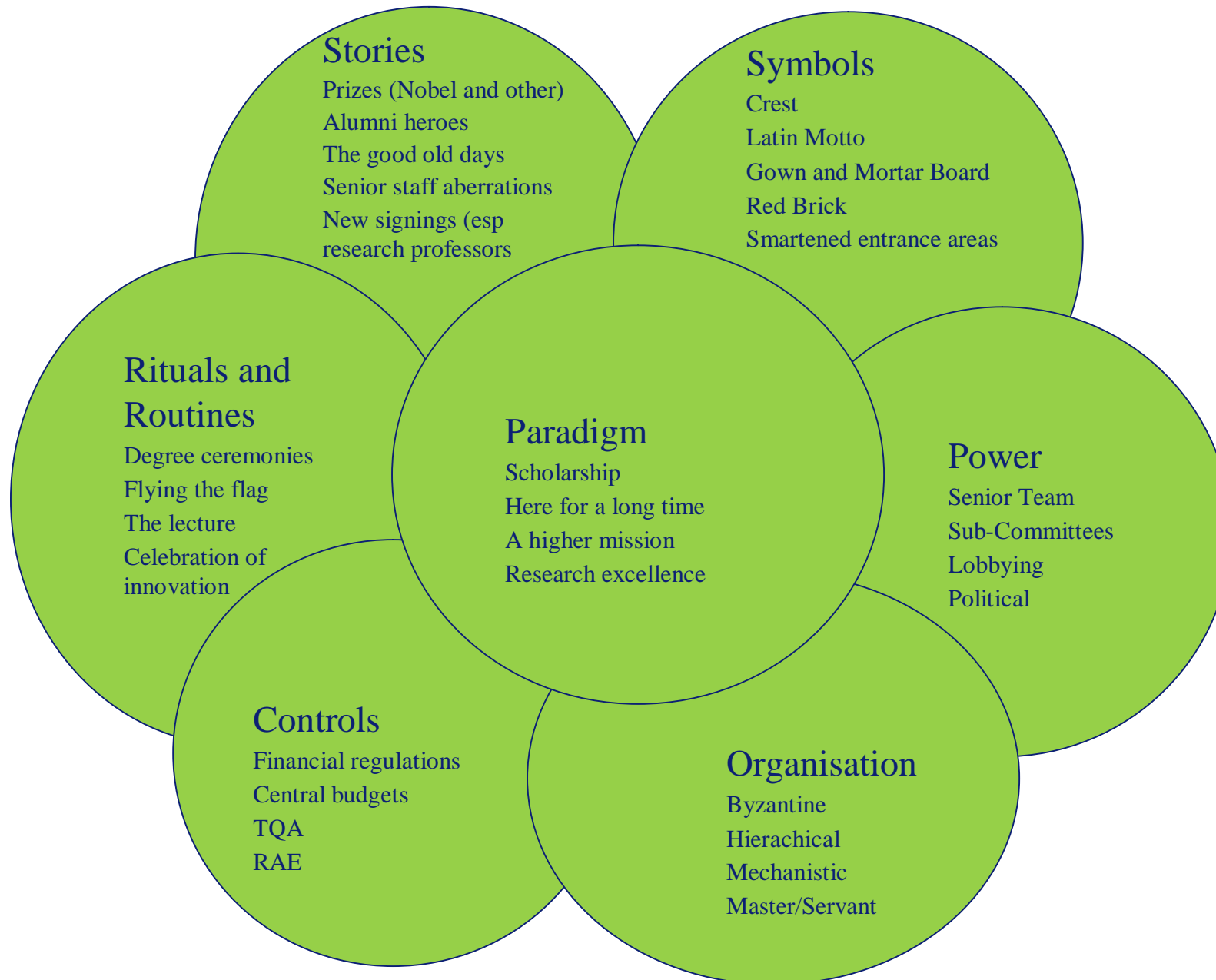
- § Be determined and patient
- § It is not a trivial task
- § Keep focused and keep the mission clear
- § Not just academics and students
- § The cultural web

Supporting the innovation culture in Britain's universities:

*SECs are **catalysts of cultural change** in UK universities to make them **more relevant to business** and to enhance the Universities' contribution to growth in the economy, **employment and productivity**. SECs are encouraging strategic changes in structures and processes that will help their universities to **change** more rapidly. They are seeking to embed **the spirit of enterprise**; a mindset that strives for 'can do solutions' rather than 'can't do excuses'.*

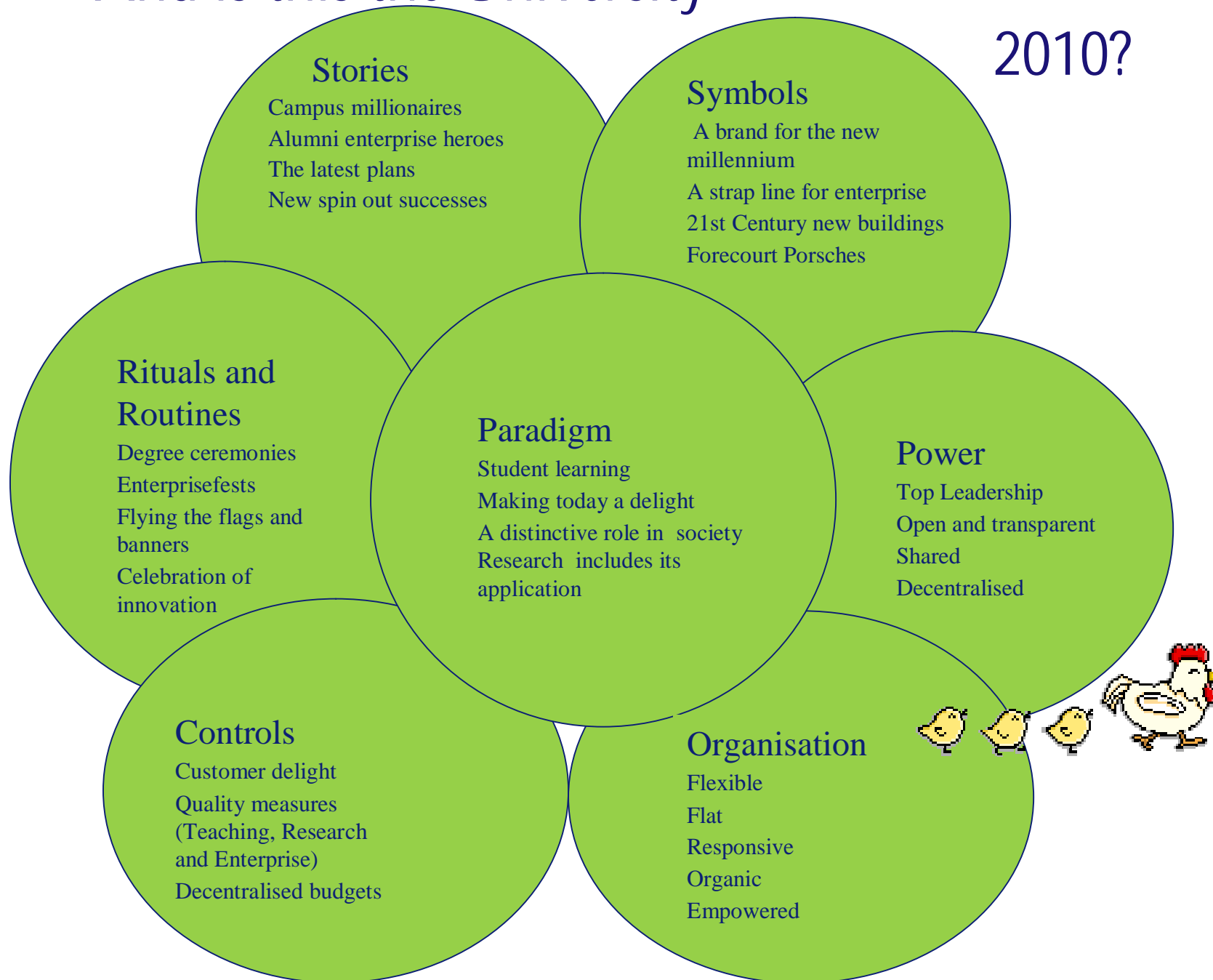
OST/DTI statement

The University - 1990s?



And is this the University -

2010?



Summary



§ Transferable?

- ü Winner of winners celebration
- ü Spirit and Heart
- ü Workshops

§ Challenges?

- ü Infiltration into teaching standards
- ü Get the e-word into university corporate objectives
- ü Walk the walk; not talk the talk. Adjunct professors

§ Pitfalls?

- ü Making it about start-up
- ü Making it an academic, business school activity