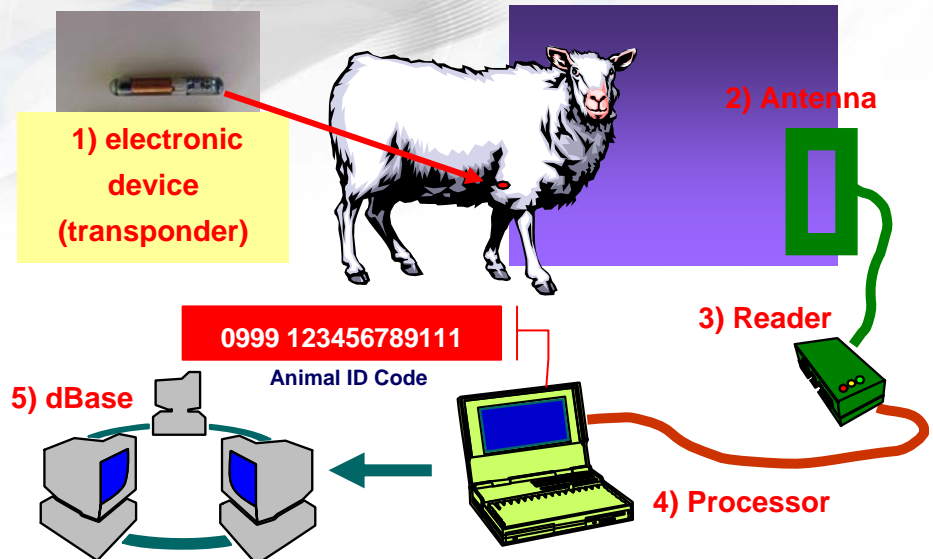


Electronic Identification of animals (EID)

PRINCIPLE OF OPERATION

- ✓ The electronic device (1) is “applied” in the animal as an ear tag, a ruminal bolus or injectable transponder;
- ✓ when the animal is close to an antenna (2), the signal of the electronic device is read through a reader (3);
- ✓ the reader sends the information through a processor (4) which retrieves the information and
- ✓ sends it to a database.



ELECTRONIC VS. CONVENTIONAL IDENTIFICATION

Electronic identification allows to:

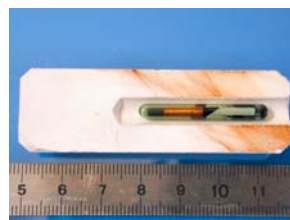
- ✓ reduce losses, breakages and alterations of the tagging devices;
- ✓ apply and read the tags more easily (with proper training);
- ✓ easier and faster transfer of data and information to other systems;
- ✓ have less errors in reading and transmitting the identification code;
- ✓ recover tags more easily.

PRACTICAL APPLICATIONS OF EID

- ✓ integration in farming and breeding management systems;
- ✓ production control (meat and milk processing);
- ✓ integration in animal health control / animal disease eradication programmes;
- ✓ quality labelling and origin of products;
- ✓ integration in subsidies controls;
- ✓ integration into national animal databases;
- ✓ provision of real-time information on location of animals (transport);
- ✓ data exchange between national animal databases in the Member States.

THE TOOLS: ELECTRONIC IDENTIFIERS AND READERS

Transponders



Injectable transponder:
small size, injected into the animal's body in biocompatible and porous material

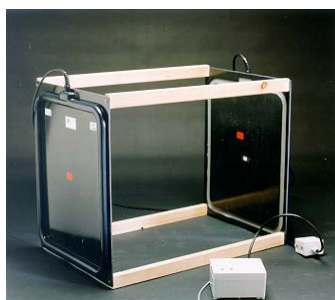
Electronic Ear Tag:
covered in plastic, fixed to the animal ear with a locking mechanism

Ruminal bolus:
The transponder is inside a high specific gravity container. Administered orally to a ruminant. Remains permanently in the fore stomach

Readers



Examples of **portable, handheld readers** used for first identification of restrained animals or small flocks. Characteristics: battery-powered, internal/external antenna, with/without memory, with/without link to PC/keyboard/...



Examples of **stationary readers**, used for dynamic reading and identification of groups of animals. They are usually connected to a PC.

CONTACTS

Gianluca Fiore
Tel.: +39 0332 78 6710
Fax: +39 0332 78 6280

e-mail: gianluca.fiore@jrc.it; eid@jrc.it;
animalwt@jrc.it
websites: <http://eid.jrc.ec.europa.eu>
<http://ipsc.jrc.ec.europa.eu/>