



Monitoring Central African forest resources

An activity of the ACP Observatory

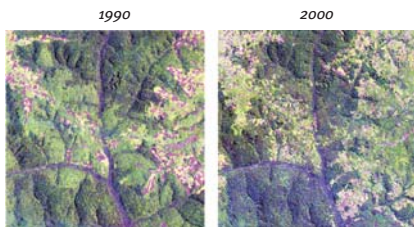
Central African Forests

Central Africa contains the second largest area of contiguous moist tropical forest of the world, covering about 2 millions km². This unique ecosystem support the livelihood for 40 million people, plays a major role in the main global cycles (carbon, energy, water) and is a fantastic reservoir of biodiversity. The lack of up-to-date and accurate information on the current state of forested areas in Central Africa has often been cited as a limitation in the design of efficient forest management policies.

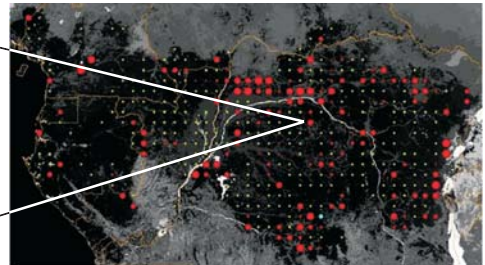
Deforestation and forest logging surveillance give precious information in the Climate Change debate (Reduction Emissions by Deforestation) and in sustainable management of natural resources (FLEGT).

Monitoring Deforestation

The first detailed estimates of deforestation in the Congo Basin, carried out by JRC and UCL, was based on a fine sampling of satellite images from 1990 and 2000. It shows (size of red dot) a concentration of deforestation on the fringes of the forest block and a relative low deforestation in the center of the Basin.

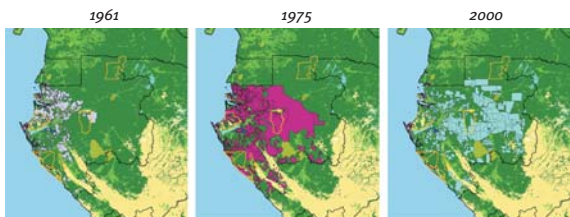


Map of deforestation

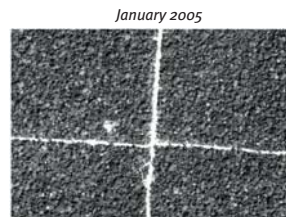


Controlling Forest Logging

Forest exploitation provides revenue for the African governments and salaries for many workers in the region. The verification of the the exploitation legality allows for maximising the revenue at long-term generated by the forests.



Evolution of logging concessions in Gabon



January 2005



March 2005

Clearings

Contact



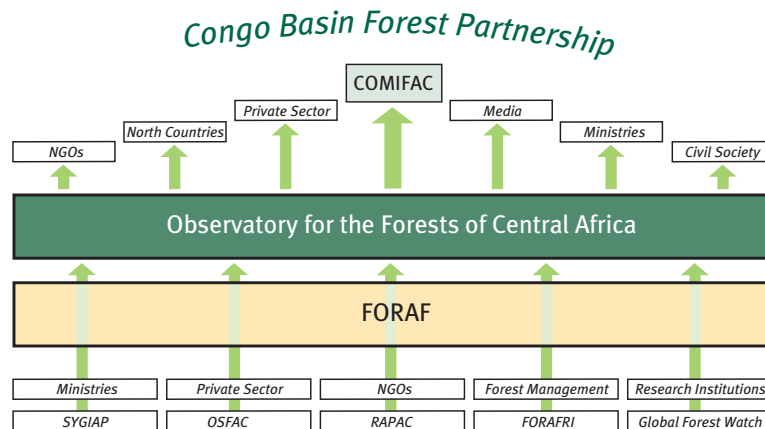
Observatory for the Forests of Central Africa

From Information Gathering to Decision Making

OFAC

The Observatory for the Forests of Central Africa (OFAC), an initiative of multiple members of the Congo Basin Forests Partnership (CBFP), aims to pool the knowledge and available data necessary to monitor the ecological, environmental, and social aspects of Central Africa's forests.

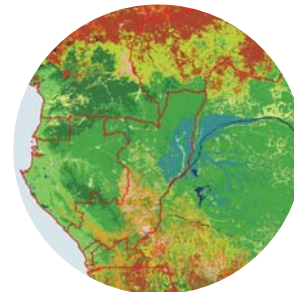
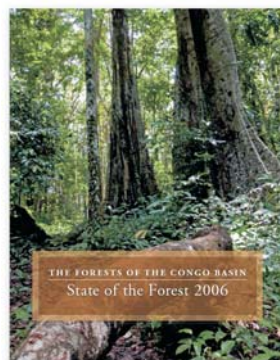
The approach adopted for the creation of OFAC, which relies on human resources in the region, makes the development of OFAC a true exercise in capacity building at both the national and regional level. The principal data providers are the ministries responsible for forest management and the environment, the private sector, protected areas management, forest management, NGOs, international projects, research institutions, universities, etc.



FORAF Project

As a European contribution to the Observatory for the Forests of Central Africa initiative, JRC is building the FORAF project, with a consortium of scientific institutions led by CIRAD (FRANCE) and comprised of the Center for International Forestry Research / CIFOR (Indonesia), Forêt Ressources Management / FRM (France), and the Université Catholique de Louvain / UCL (Belgium).

The Observatory will present its results and analyses in reports, indicator tables, and maps. All of which will all be available through a website scheduled to be launched at the end of 2007. Several outreach and training workshops will be held in the region to support the production of quality data and facilitate the use of such data in the decision making process.



Contacts