



Introducing the  
JRC Institute for Prospective Technological Studies  
to  
EU Science Journalists Association

Sevilla, 20<sup>th</sup> January 2010  
R. Compañó, Programme Manager

*Reduce the number of Europeans living below national poverty lines by 25%, lifting 20 million people out of poverty.*

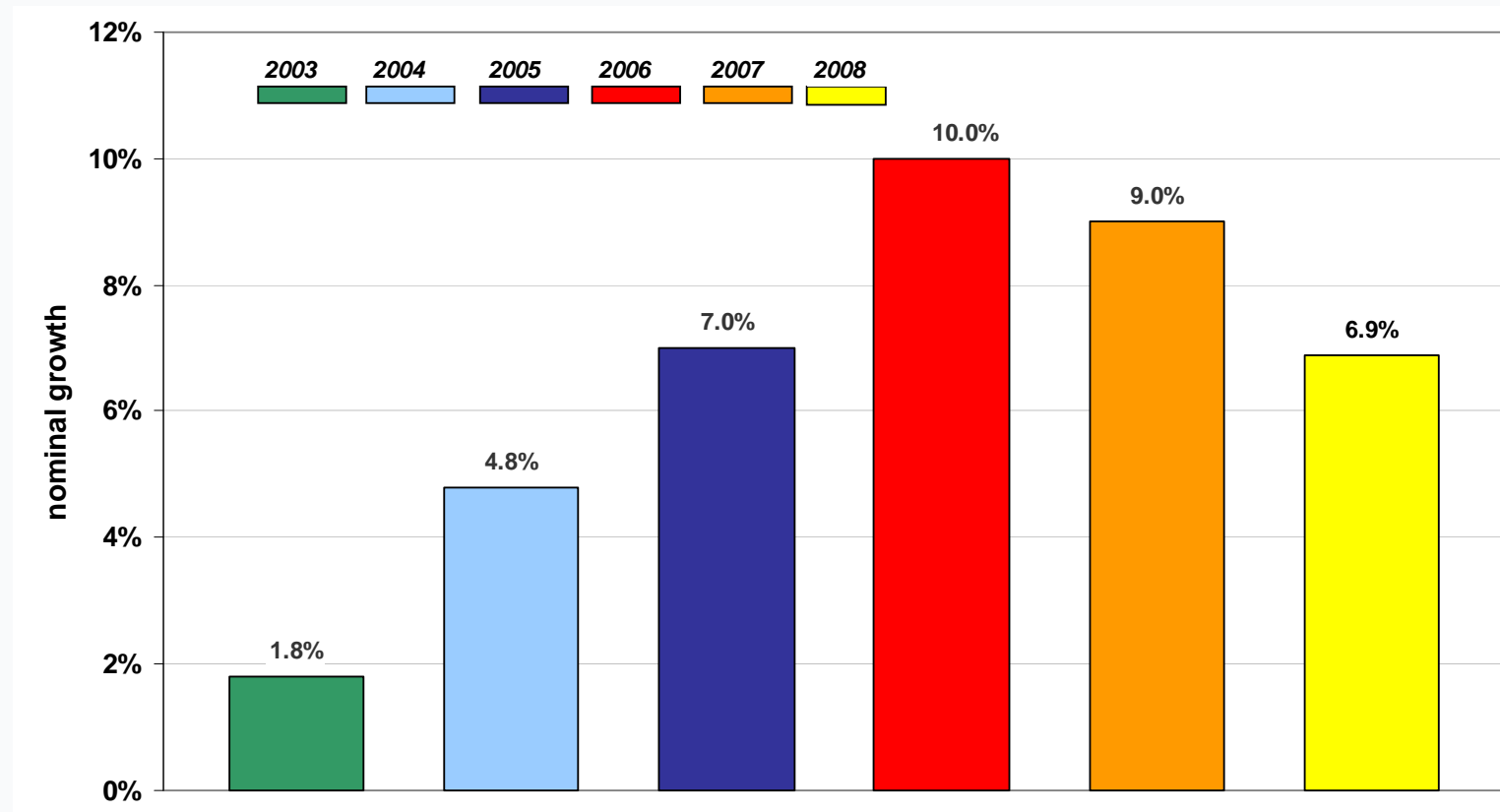
*Reduce the share of early school leavers to 10% from the current 15% and increase the share of the population aged 30-34 having completed tertiary education from 31% to at least 40%.*

**Reduce greenhouse gas emissions by at least 20% compared to 1990 levels or by 30% if the conditions are right. increase the share of renewable energy in our final energy consumption to 20%. and achieve a 20% increase in energy efficiency.**

*Raise the employment rate of the population aged 20-64 from the current 69% to at least 75%.*

**ACHIEVE THE TARGET OF INVESTING 3% OF GDP IN R&D IN PARTICULAR BY IMPROVING THE CONDITIONS FOR THE INVESTMENT BY THE PRIVATE SECTOR, AND DEVELOP A NEW INDICATOR TO TRACK INNOVATION.**

## R&D investment growth of the *Scoreboard* companies



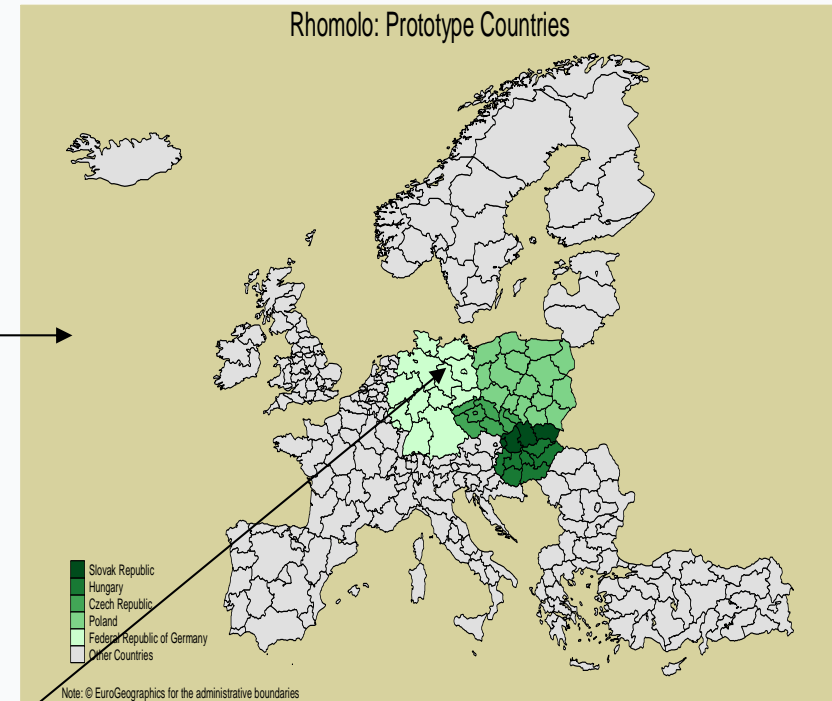
Note: The different *Scoreboards* are not directly comparable because of changes in the sample composition. Source: *The EU Industrial R&D Investment Scoreboards (of 2004, 2005, 2006, 2007, 2008, 2009)* European Commission, JRC/DG RTD.

RHOMOLO is a spatial general equilibrium model for the evaluation of impacts of knowledge and infrastructure investments

Its coverage will be extended to all **regions of the EU-27** in the next two years

The main linkages between the regions are **transport, capital, knowledge** and **migration** flows

**Human capital** build-up and **R&D** are major sources of regional productivity gains and spillovers

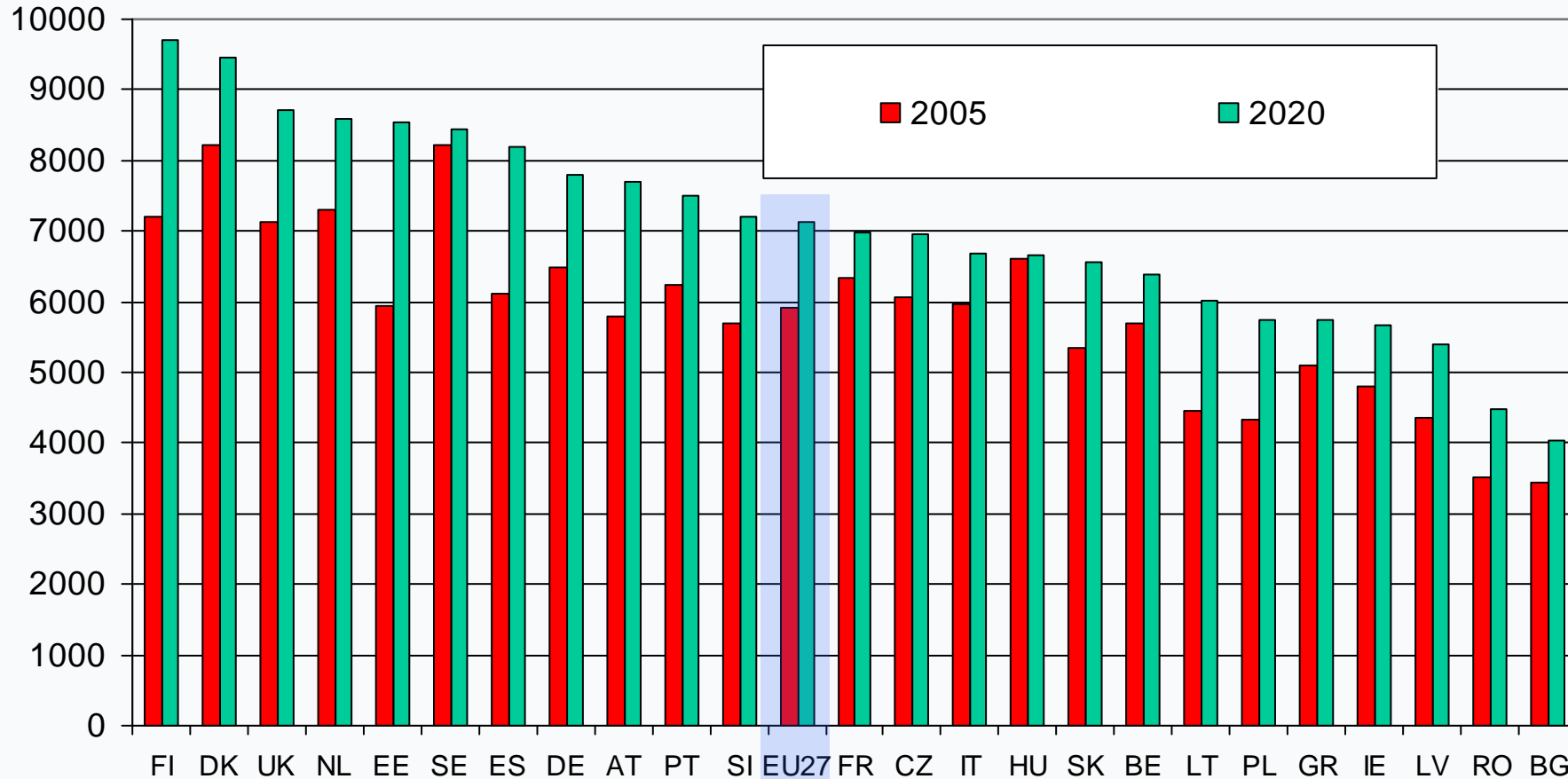


First scenarios to be developed for DG REGIO:

- The impact of cohesion policy support to, human capital development, R&D, innovation and infrastructure in a particular region
- The impact of establishing a direct link between two regions

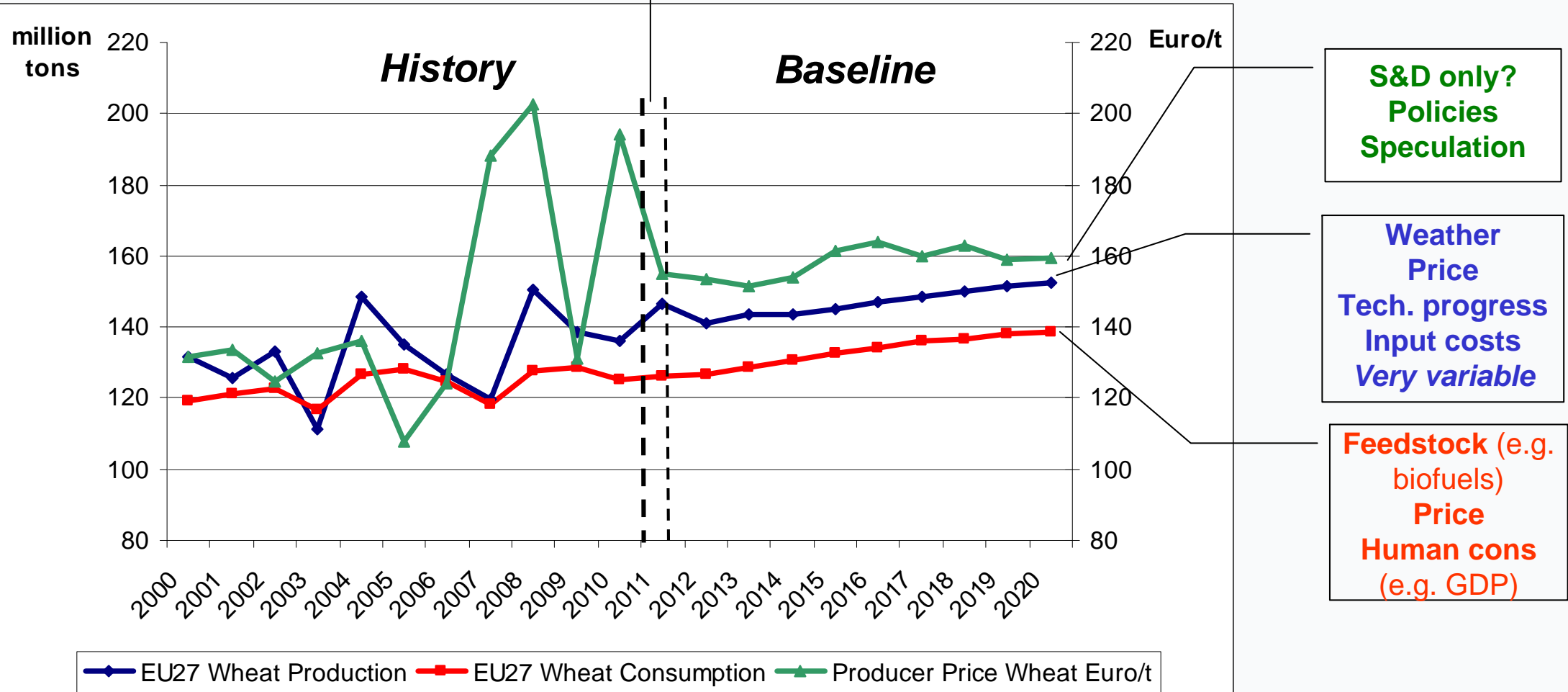
kg of milk  
per cow

## Milk yields in selected Member States: Comparison of 2020 projection with 2005

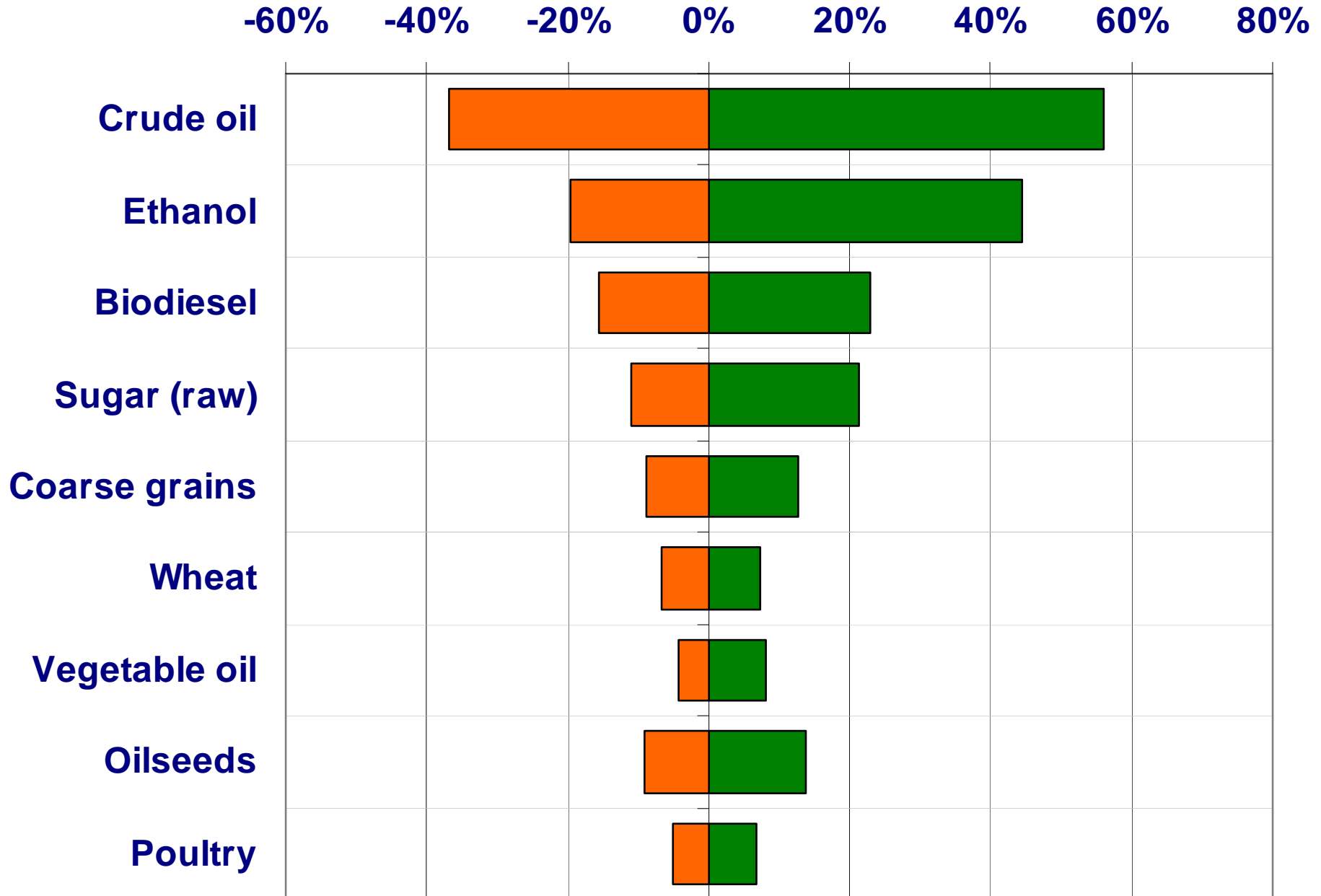


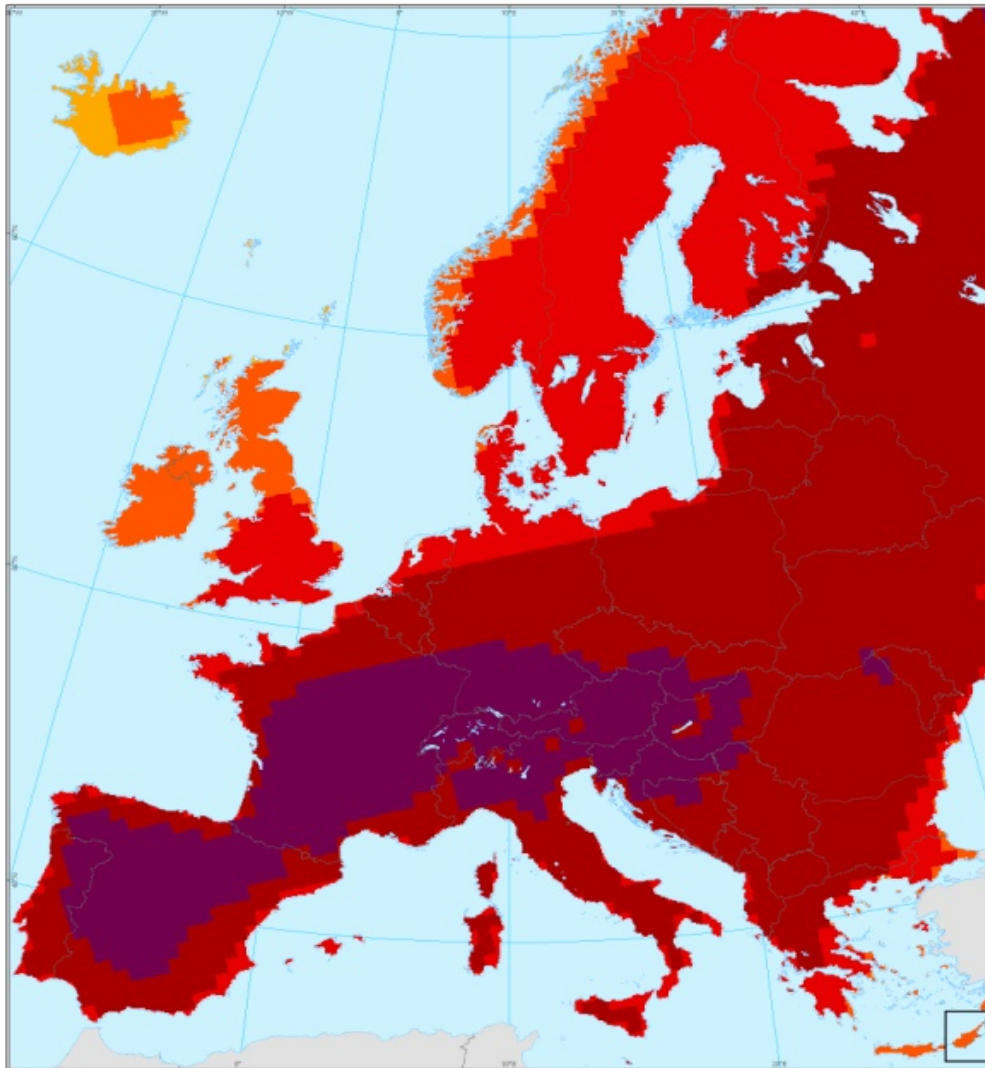
Short-term  
forecast

Research Challenge how to deal with uncertainties

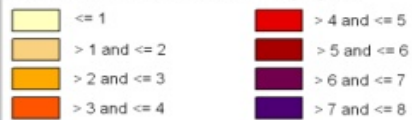


Source: AGLINK baseline Oct 2010; JRC-IPTS



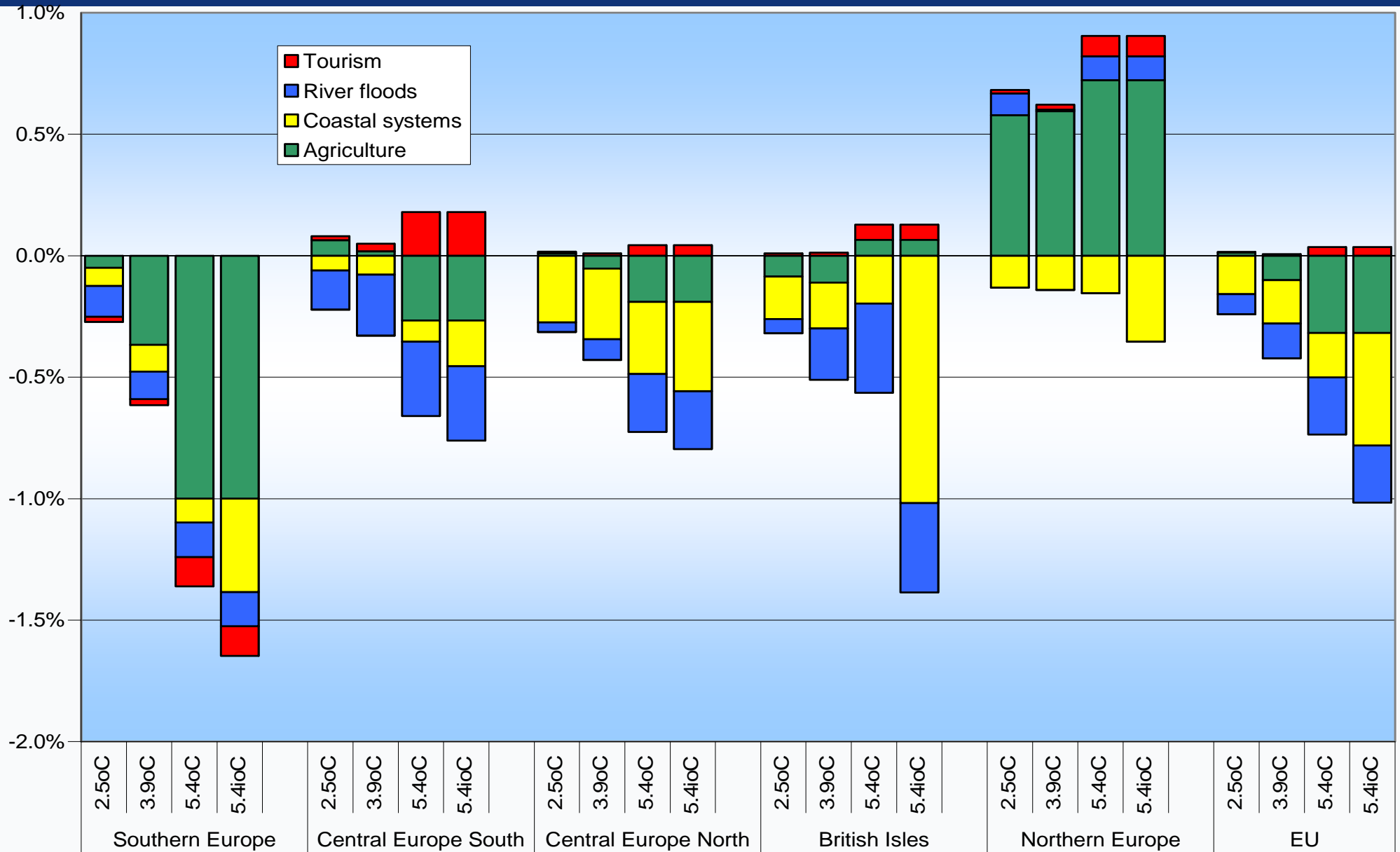


**TEMPERATURE (change in mean annual temperature, C°)**  
A2 ECHAM scenario  
Source: DMI/PRUDENCE, PESETA project



0 250 500 1 000 KM  
Coordinate Reference System: ETRS89 Lambert  
Azimuthal Equal Area  
© EuroGeographics for the administrative boundaries  
© GAUL - dataset (FAO)  
© 2008 Copyright, JRC, European Commission





# Thank you for your attention!

