



The Joint Research Centre (JRC): Opportunities offered to the research community of Bosnia and Herzegovina

*Giancarlo Caratti, Milena Raykovska
Joint Research Centre, European Commission*

23 April 2009

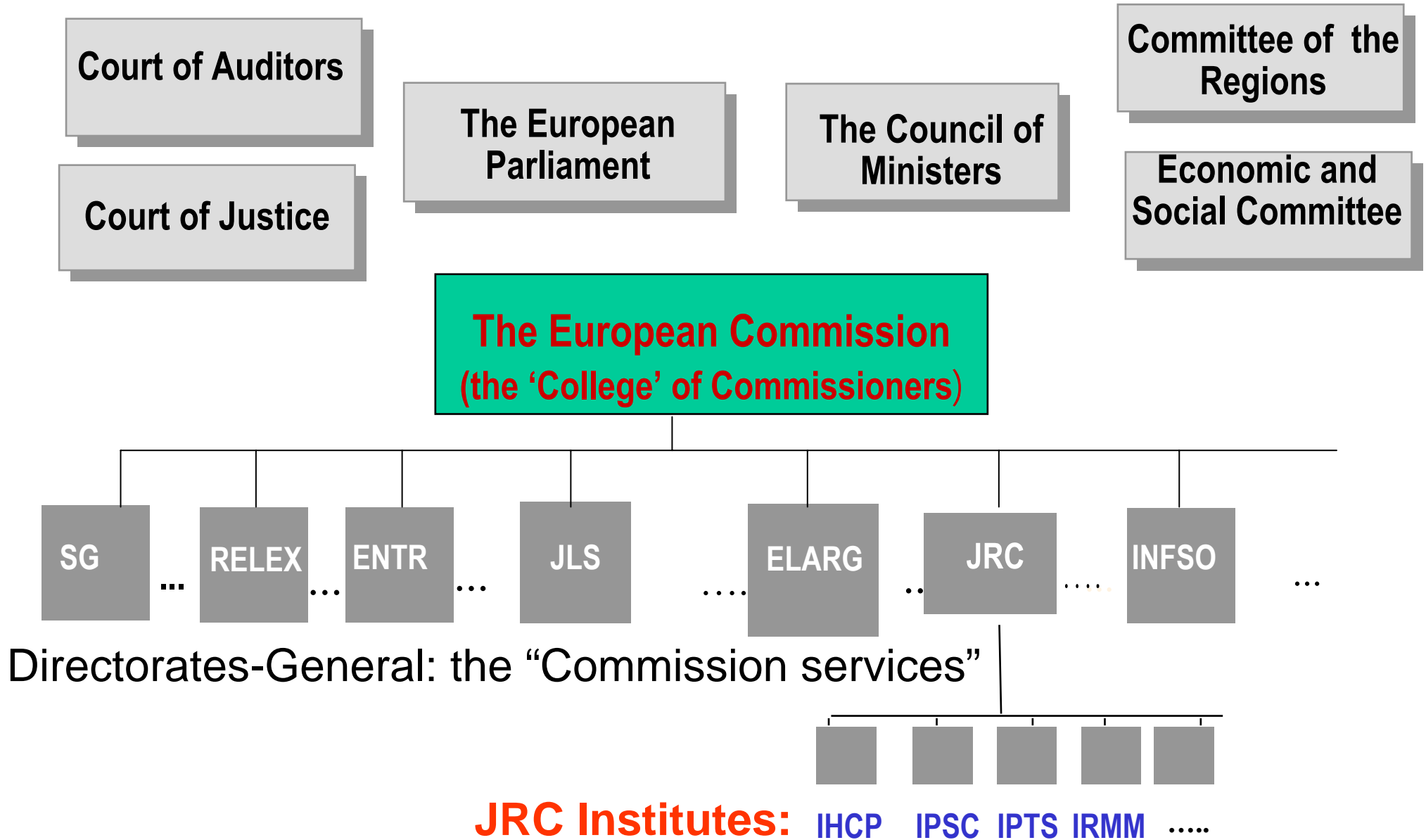
<http://www.jrc.ec.europa.eu>

... to provide customer-driven scientific and technical support for the conception, development, implementation and monitoring of EU policies.

As a service of the European Commission, the JRC functions as a reference centre of science and technology for the Union.

Close to the policy-making process, it serves the common interest of the Member States, while being independent of special interests, whether private or national.





IRMM - *Geel, Belgium*

Institute for Reference Materials and Measurements

ITU - *Karlsruhe, Germany*

Institute for Transuranium Elements

IE - *Petten, The Netherlands and Ispra, Italy*

Institute for Energy

IPSC - *Ispra, Italy*

Institute for the Protection and Security of the Citizen

IES - *Ispra, Italy*

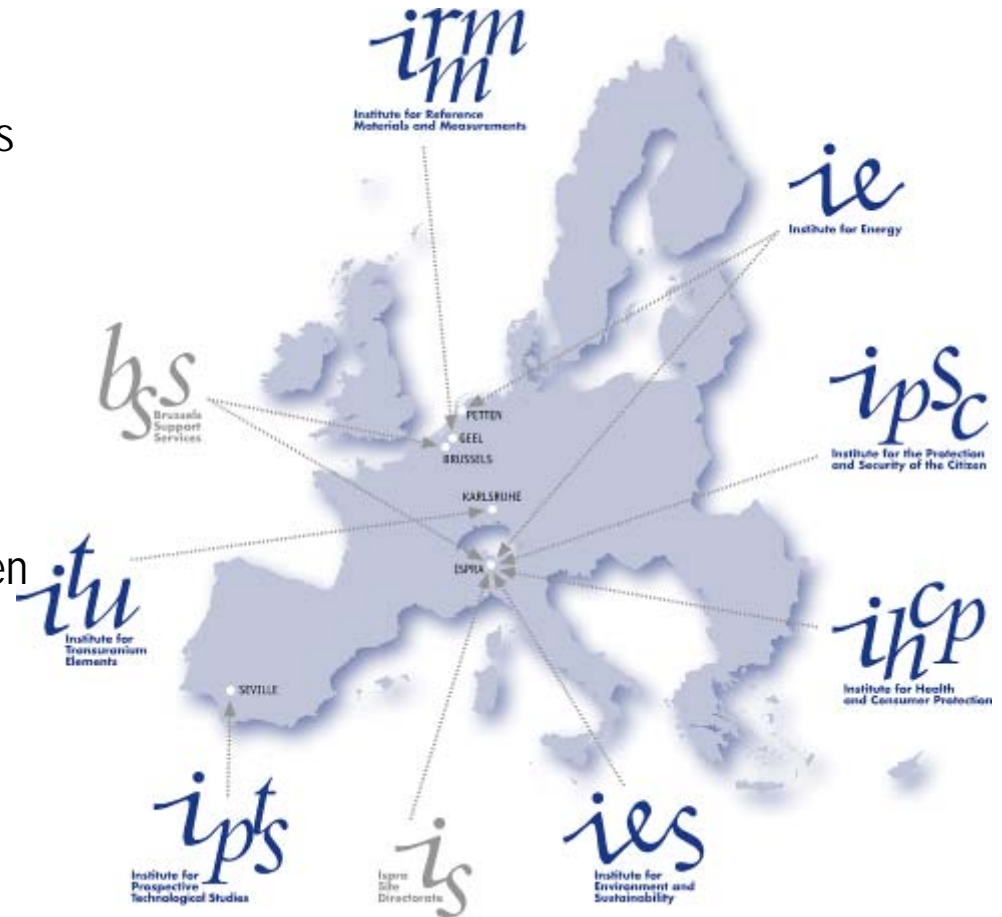
Institute for Environment and Sustainability

IHCP - *Ispra, Italy*

Institute for Health and Consumer Protection

IPTS - *Seville, Spain*

Institute for Prospective Technological Studies



~ 2700 staff + 250 competitive

~ 340 M€/y budget (+ ~ 50 M€/y competitive income)

JRC in FP7: Indicative Budget Breakdown

683 M€ 'Prosperity'

- Chemicals
- Biotechnology
- Energy and Transport
- Information Society

517 M€* 'Nuclear'

- Nuclear Energy, Safety and Security

88 M€ 'World Partner'

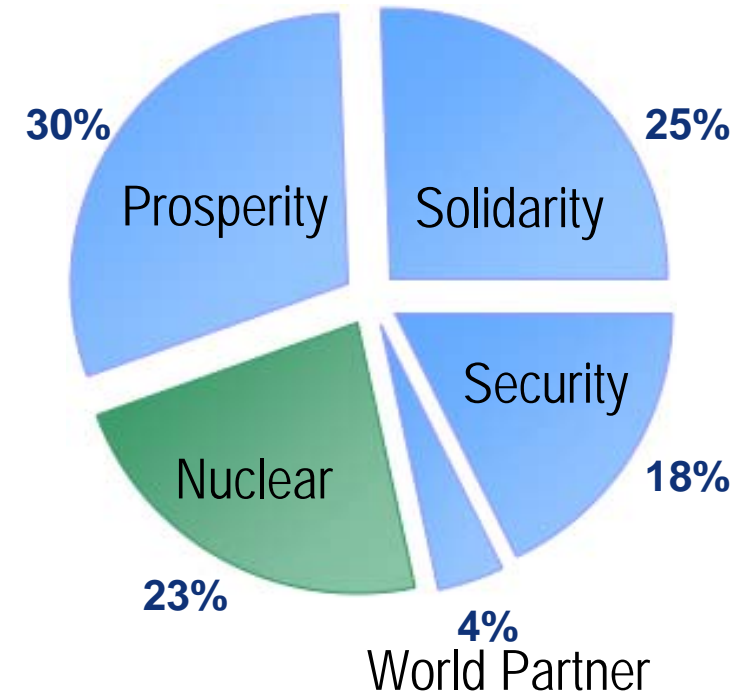
- Global Security

578 M€ 'Solidarity'

- Environment
- Health
- Climate Change
- Rural Development

403 M€ 'Security'

- Natural Disasters
- Internal/External Security
- Food Chain



■ Non-nuclear (5-year programme)
 ■ Nuclear

- **EU Policy support:** intensive interaction with policy DG's and relevant stakeholders: direct scientific/technical input into legislative process; operational support: alert/anticipation, quick response functions and monitoring of compliance (e.g. crop declarations under Common Agricultural Policy)
- **Scientific-technical reference systems:** establish standardised methodologies and measurement protocols (GMO, BSE/TSE, environmental quality, nuclear safety etc); reference materials and measurements
- **Research partnerships:** European Research Area, user laboratories, access to large facilities, networks, training and mobility, co-operations
- **Specific actions** towards New Member States and Candidate Countries



Long-standing experience in support to a range of Community policies requiring GMES related information, e.g. in the areas of:

- Natural Resources
- Agriculture
- Environment
- Development and Humanitarian Aid
- Global Change
- Civil Protection
- Security



Forest fire in South Asia
Using satellite topographic data a high-resolution data
Sultan of Selam
Lukole refugee camp in Tanzania
Images from a high-resolution satellite
showing a formation of fishing vessels

The Community Reference Laboratory for GM Food and Feed

- CRL runs European Network of GMO Laboratories (ENGL): 120 laboratories in 27 Member States+NO+CH
- So far, 74 cases received;
- 34 validation reports published (+ 17 validations completed for which reports will be published within 2008);
- 4 reports for emergencies / non-approved GMOs published (Maize (BT10, “event 32”), Rice (LL601,Bt63));
- The CRL is ISO 9001:2000 certified and ISO 17025 accredited;
- It carries out extensive training programs in co-operation with the WHO.



Validity Assessment of the Detection Method of Maize Event Bt10 through Investigation of Its Molecular Structure; *J. Agric. Food Chem.*, March 24, 2009 (web)



- Since 1993: 300 confirmed cases of illicit trafficking of radioactive and nuclear material, 215 of them in the past 5 years
- About 400 samples analyzed annually (including for ESO and IAEA, samples from Irak & Iran)
- A workshop on the application of mobile identification techniques to combat illicit trafficking was organised together with INRNE in Sofia on 6-9 December 2005

JRC support:

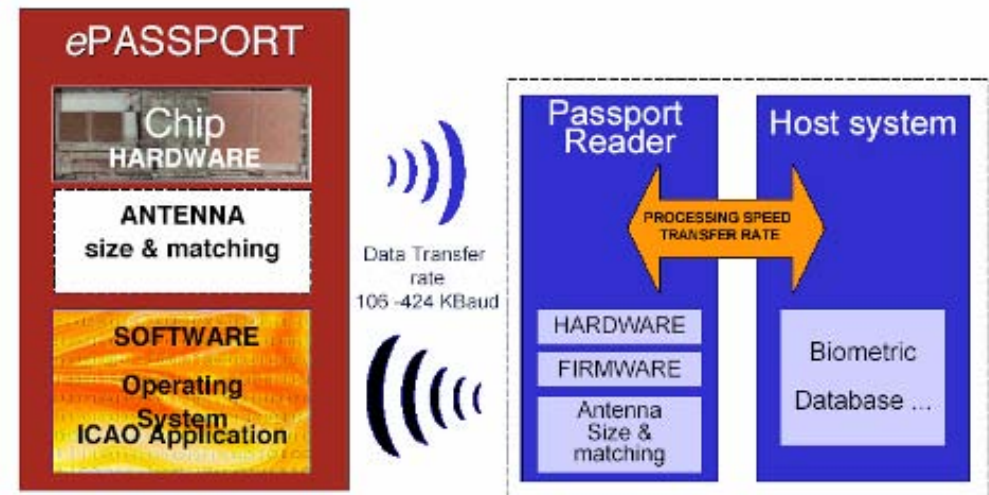
- ✓ Techniques for identifying nature of seized material, assess risk, locate origin
- ✓ Contacts with law enforcement agencies and nuclear forensics development
- ✓ Assistance to NMS and CC (advice, training, equipment supply)
- ✓ Maintain / update database on commercial nuclear materials



Hague Program 2005 Action Plan: Coherent approach and harmonized solutions in the EU on biometric identifiers and data

Integrate biometric identifiers in travel documents, visa, resident permits, EU citizens' passports & information system

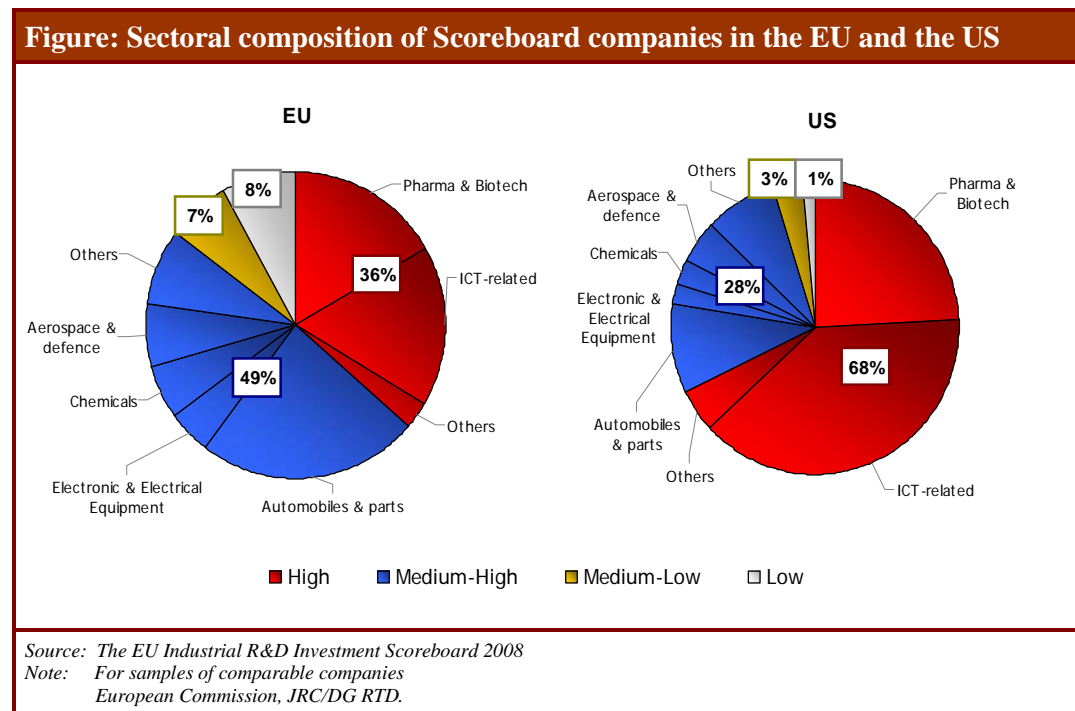
- Tests of conformity of passports issued by Member States
- Tests of interoperability of electronic passports and readers
- Evaluation of performance of biometric identification systems
- Technical support to the development of standards



Analysis of private R&D

The objective is to provide EU policy makers with a better understanding of investment in research and its relation to economic performance (thus helping to design policies to reach the Lisbon targets)

Examples of products: EU Industrial R&D Investment Scoreboard (annual); sector studies; relation between corporate R&D and productivity; Survey on R&D investment business trends (annual)



R&D investment gap is structural

JRC has many unique laboratories and research facilities open to co-operations, some with dedicated training programmes or run as user facilities, e.g.:

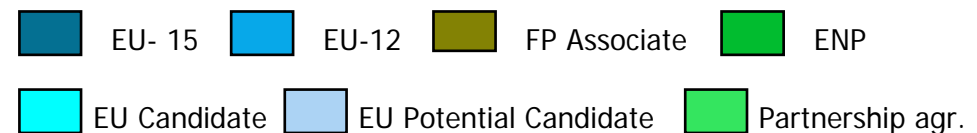
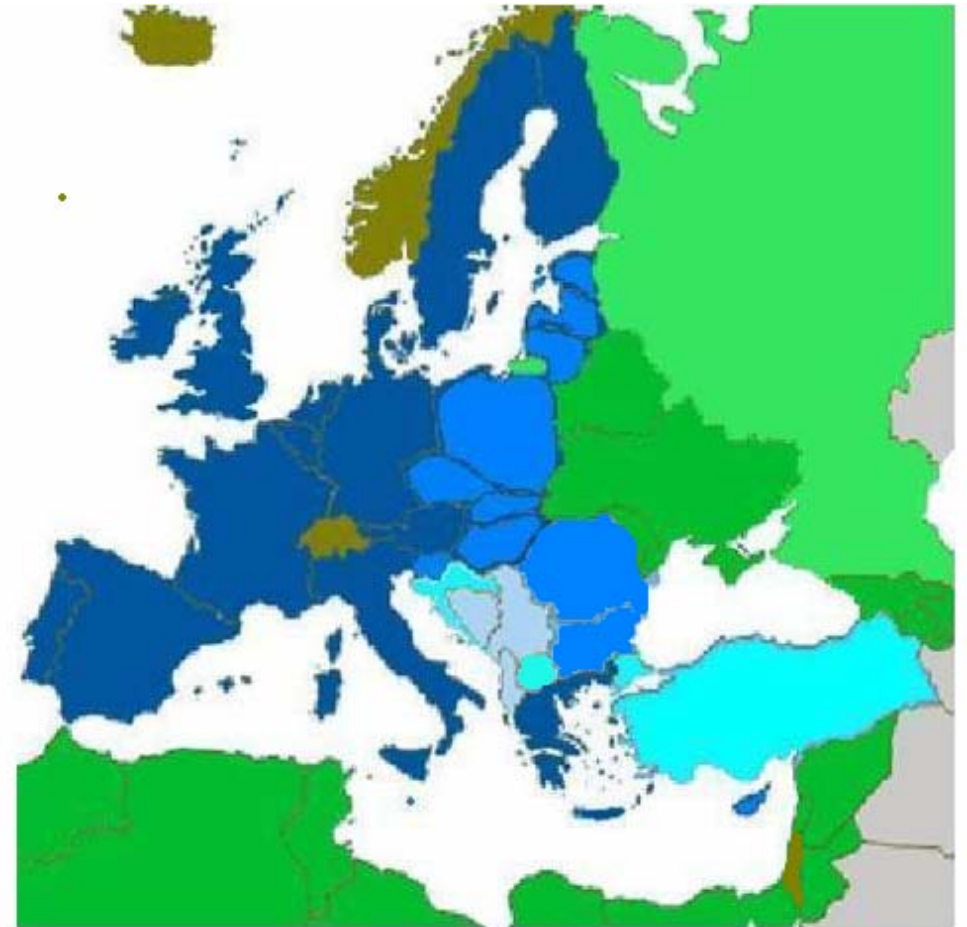
- Seven Community Reference Laboratories (CRLs)
 - CRL for GMOs in food and feed; CRL for feed additives; CRL for food contact materials; CRL for heavy metals in feed and food; CRL for mycotoxins in food and feed; CRL for polycyclic aromatic hydrocarbons
- The Vehicle Emissions Laboratory (VELA) – JRC-IES (Ispra)
- Geel Linear Accelerator (GELINA) – JRC-IRMM (Geel)
- High Flux Reactor (HFR) – JRC-IE (Petten)
- Hot Cell Laboratory – JRC-ITU (Karlsruhe)
- European Laboratory for Structural Assessment (ELSA) – JRC-IPSC (Ispra)

...and many others



Strategic Objectives:

- To help the New Member States, Candidate and Potential Candidate Countries in dealing faster with the “EU acquis” in areas of JRC competence
- To contribute to the development of the “European Research Area”



Through 4 intertwined instruments:

1. **Projects (Institutional Networks, Indirect Actions, Collaboration Agreements)**
2. **Job opportunities (hosting experts; exchange of staff)**
3. **Advanced training courses and workshops**
4. **Information and awareness actions**



Institutional Networks: for harmonisation and validation of methods and measurements, establishment of common standards, provision of scientific and technical support in the implementation of EU legislation

JRC collaborates with over 1000 partner organisations in some 100 institutional networks.

Indirect Actions: JRC participates on equal competitive basis in the EU Research Framework Programme

JRC is involved in 250 actions, collaborating with some 1000 partner organisations (FP6)

Collaboration Agreements: concern joint research, information sharing and sometimes the exchange of personnel

JRC has some 200 operational collaboration agreements with public and private research organisations, universities and national and international bodies

JRC applies to FP calls on “equal footing” and on “competitive basis” equal to all other organisations

Possible proposals for submission of joint proposals could be routed via either the JRC institutes, JRC Brussels or country National Contact Point (or vice-versa)

Offers for cooperation will be considered (based on mutual interest and added value)

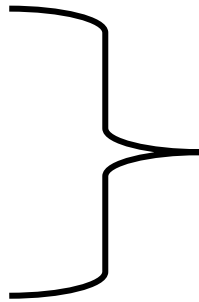


- Policy of attracting top scientists and professionals
- Working in multidisciplinary institutes in 5 different countries; wide range of scientific activities
- Multinational, multilingual teams
- Scientific and cultural diversity
- Supporting researcher's integration
- Welcoming staff from new Member States and Candidate Countries
- Visit:

www.jrc.ec.europa.eu
www.jrc.ec.europa.eu/jobs



- **Permanent Staff**
- **Temporary Agents**
- **Contract Agents**



Statutory Staff

**Through open competitions launched by the European Personnel Selection Office (EPSO), <http://europa.eu/epso/>
Guided by Staff Regulations.**



- **Grantholders**
- **Seconded National Experts**
- **“Enlargement & Integration Action” positions**
- **JRC Trainees**
- **Other working opportunities**



Non Statutory Staff

Also open to countries associated to FP and Candidate Countries

Goal: to disseminate the results of individual projects and studies and to support Member States and Candidate Countries in implementation of EU policies

Areas: Food, Chemicals, Environment, Metrology, Agriculture, Energy and Nuclear Safety, etc. areas of competence of the JRC

Statistics:

JRC	2005	2006	2007
Advanced courses and workshops	102	137	86
Experts attending	4 020	4 460	3 500

Link: <http://ec.europa.eu/dgs/jrc/index.cfm?id=3080&lang=en>

Recent examples

Information Events

- Slovenia, 26 May 2008

Round Tables

- Bulgaria, 18 November 2008

Technical visits

- JRC visit to TAEK, Istanbul, Ankara, 17-22 September 2008
- Visit of IGLO network to Ispra, 2-3 October 2008
- Visit of EP-ITRE delegation to Ispra, 28 October 2008

Specialised events

- Security Conference, Ankara, 17-18 April 2008
- GMO event, Sofia, 19 November 2008



- Some 30 experts from Bosnia and Herzegovina participated in the JRC Enlargement and Integration Workshops in 2009
- Collaboration and exchange of information:
 - WBC INCO NET
 - Metrology in chemistry
 - Land management & natural hazards (floods)
 - Soils
 - Air quality
- Association to FP7 opens up further opportunities

Contacts in the JRC institutes:

IPSC carmelo.addabbo@ec.europa.eu
anne-marie.morrissey@ec.europa.eu

IES arwyn.jones@ec.europa.eu
carla.dal-molin@ec.europa.eu

IHCP nicholas.nicholson@ec.europa.eu

IPTS vincenzo.cardarelli@ec.europa.eu

EI roger.hurst@ec.europa.eu

IRMM doris.florian@ec.europa.eu

ITU victor.esteban-gran@ec.europa.eu

Contacts in the JRC - Brussels:

giancarlo.caratti@ec.europa.eu
milena.raykovska@ec.europa.eu
jana.machajova@ec.europa.eu
ole-peter.ostermann@ec.europa.eu

Gateway: www.jrc.ec.europa.eu

Thank you for your attention

