



The Institute for Environment and Sustainability

Dr. Arwyn Jones

Enlargement and Integration Contact Point

Land Management & Natural Hazards Unit

rich, diverse but under pressure

Europe is

- one of the world's most desirable and healthy places to live.
- one of the most urbanized continents

80% of its population lives on

10% of the land area.

- exporting pressure on the environment by consumption of global resources.
- world's largest humanitarian donor.

Rapid changes are shaping landscapes as never before.

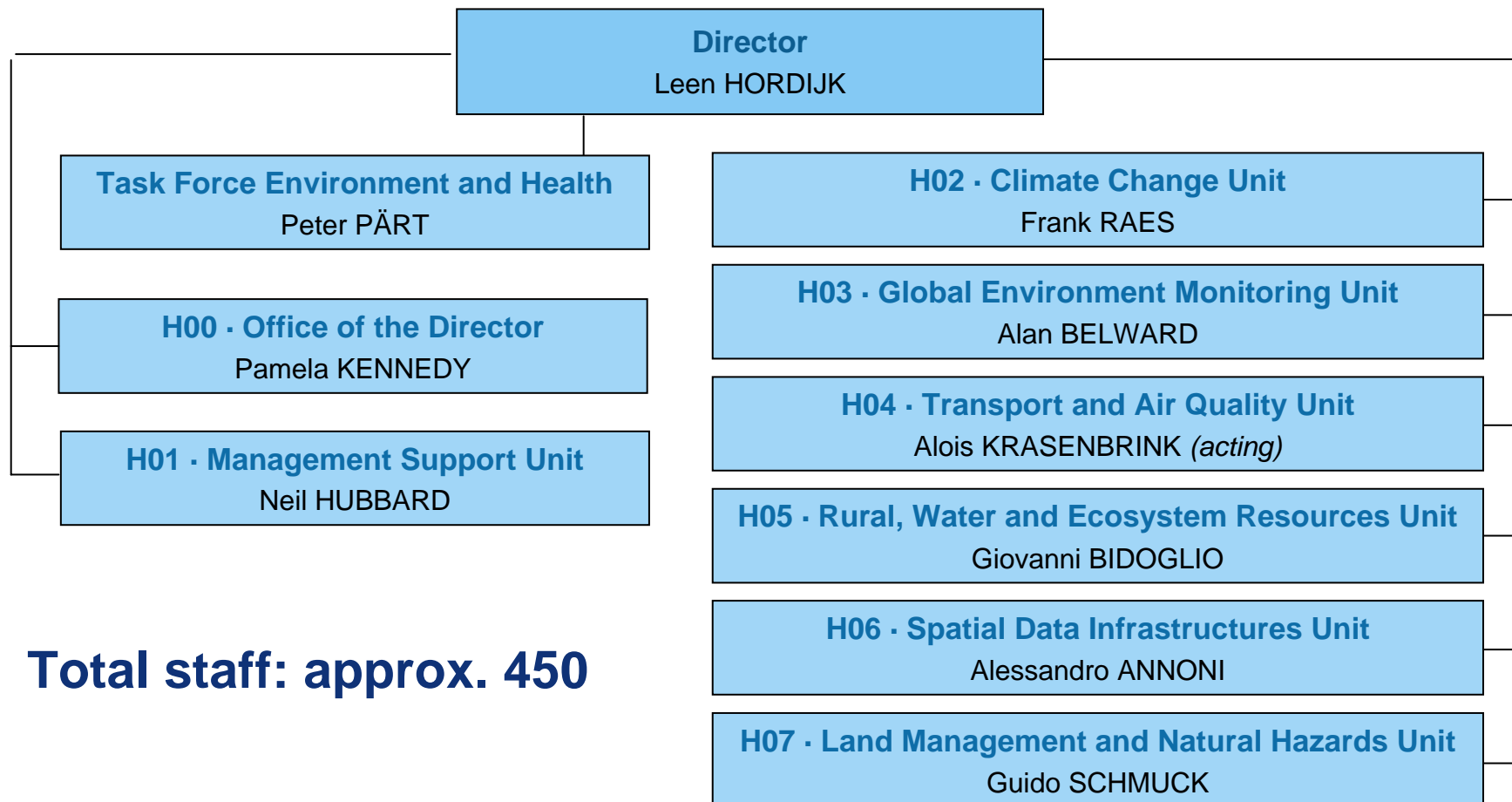
IES Mission Statement

The mission of the Institute for Environment and Sustainability is to provide scientific-technical support to the European Union's Policies for the protection and sustainable development of the European and global environment.



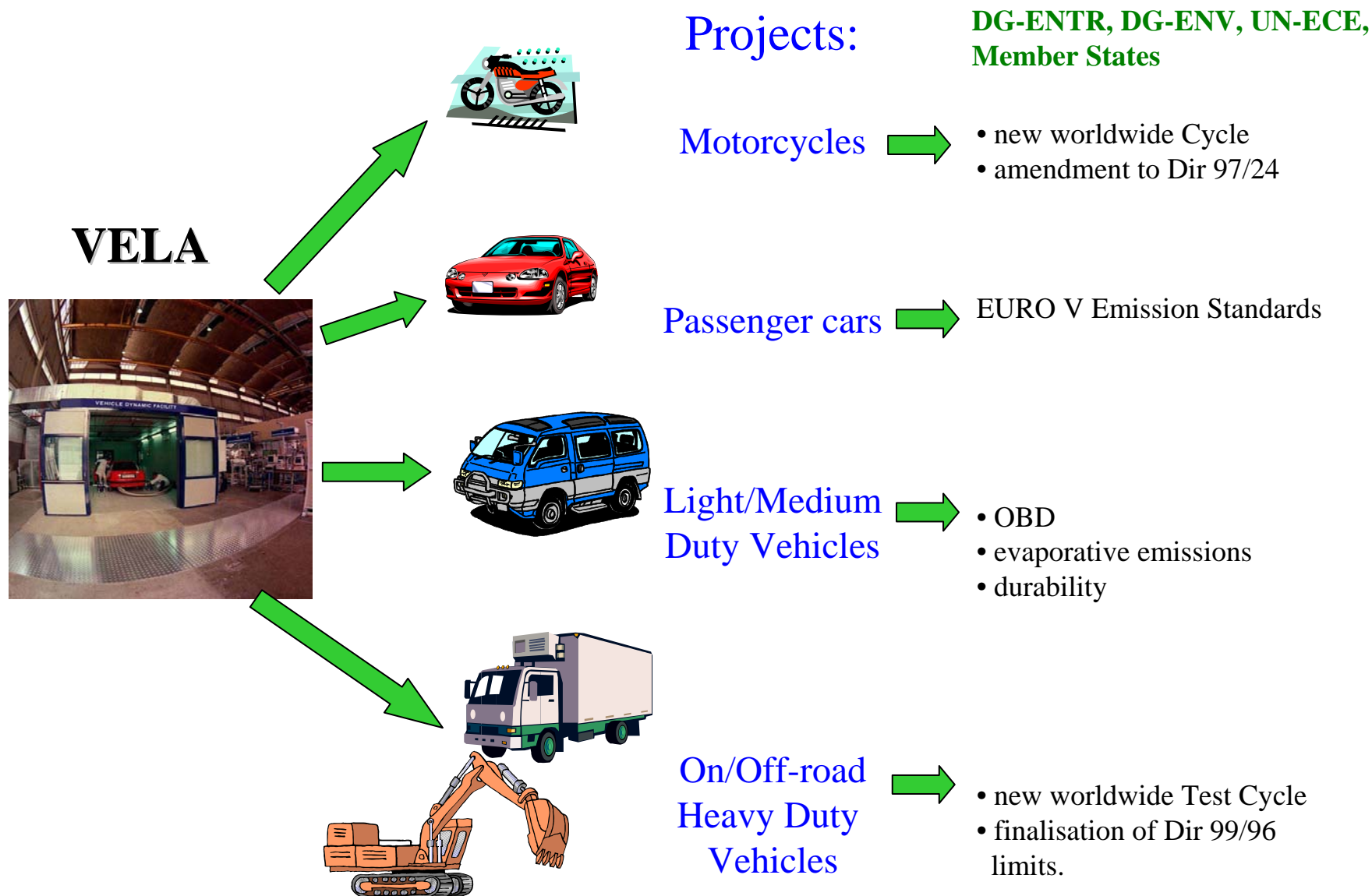
Customers: EC, EEA, EP, Member States, Global Organisations

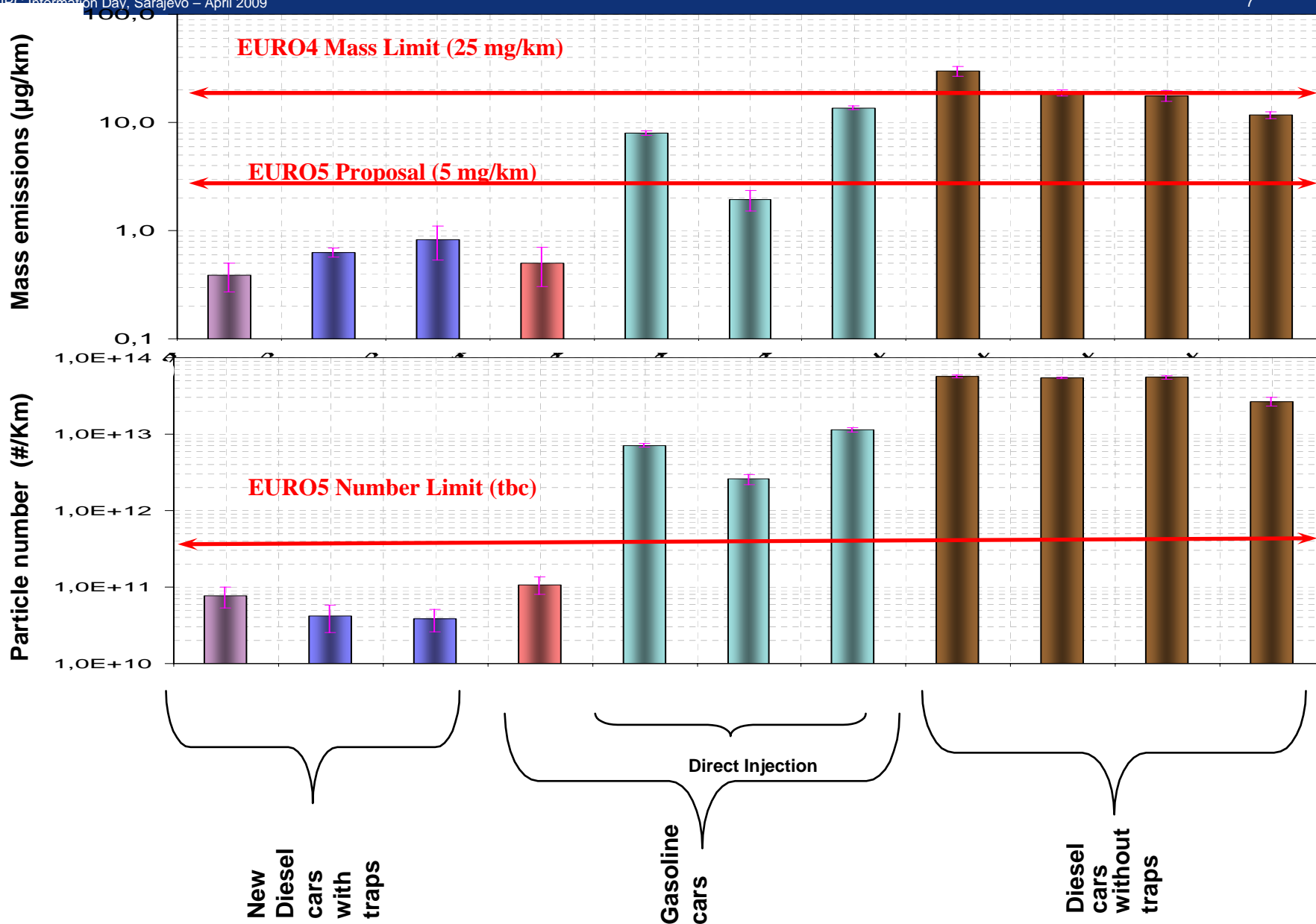
Organisational Chart IES, January 2009

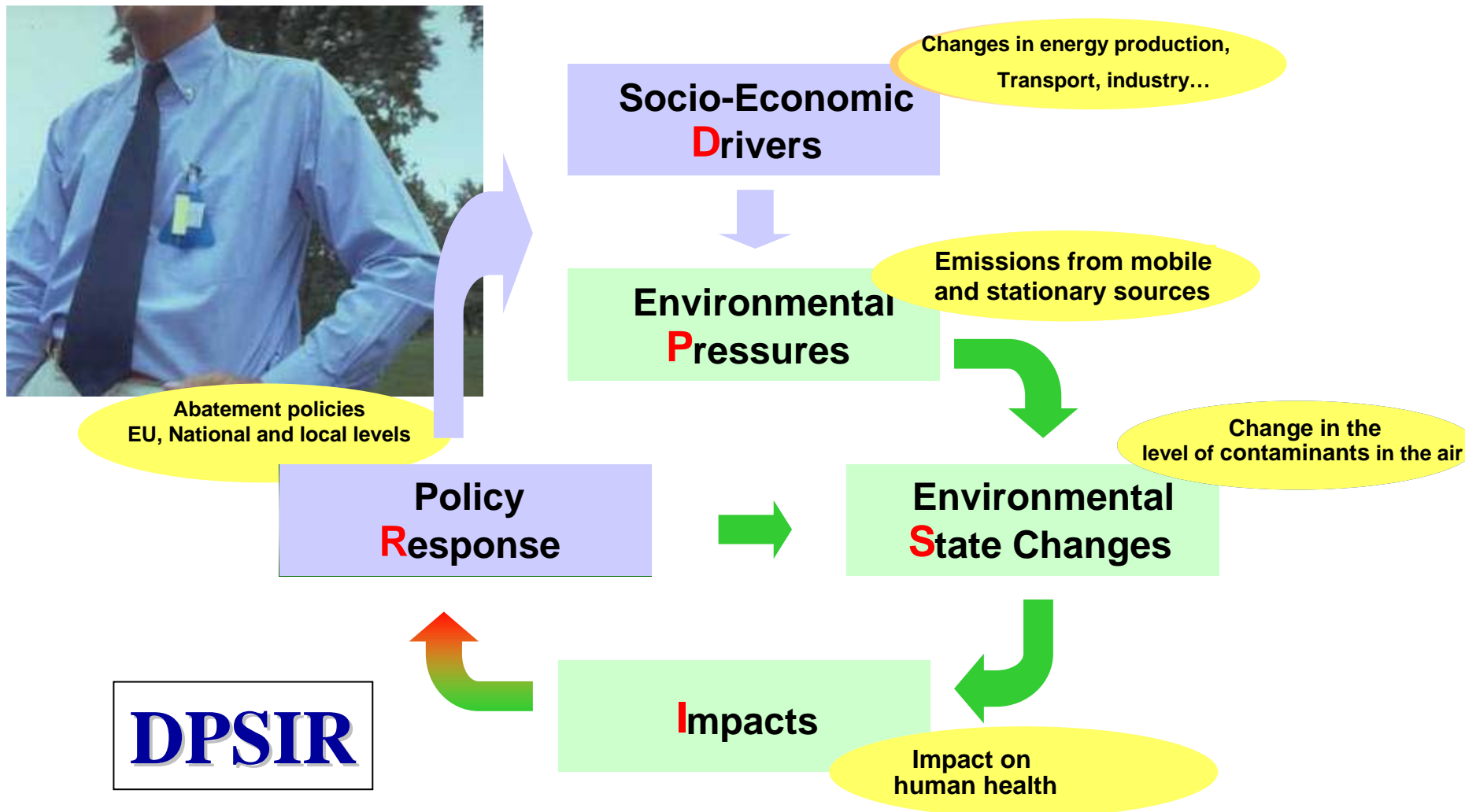



Total staff: approx. 450












EUROPEAN COMMISSION
MEMBERSHIP
Joint Research Centre



Institute for
Environment and
Sustainability

**Particle Measurement Programme (PMP)
Light-duty Inter-laboratory Correlation
Exercise (ILCE_LD) Final Report**

Jon Andersson, Barouch Giechaskiel, Rafael Muñoz-Buen
Emma Sandbach, Panagiota Dilara

Institute for Environment and Sustainability
2007
EUR 22775 E

29.6.2007
EN
Official Journal of the European Union
L 171/1

I

(Acts adopted under the EC Treaty/Euratom Treaty whose publication is obligatory)

REGULATIONS

REGULATION (EC) No 715/2007 OF THE EUROPEAN PARLIAMENT AND OF THE COUNCIL
of 20 June 2007
on type approval of motor vehicles with respect to emissions from light passenger and commercial vehicles (Euro 5 and Euro 6) and on access to vehicle repair and maintenance information
(Text with EEA relevance)

THE EUROPEAN PARLIAMENT AND THE COUNCIL OF THE EUROPEAN UNION,

Having regard to the Treaty establishing the European Community, and in particular Article 95 thereof,

Having regard to the proposal from the Commission,

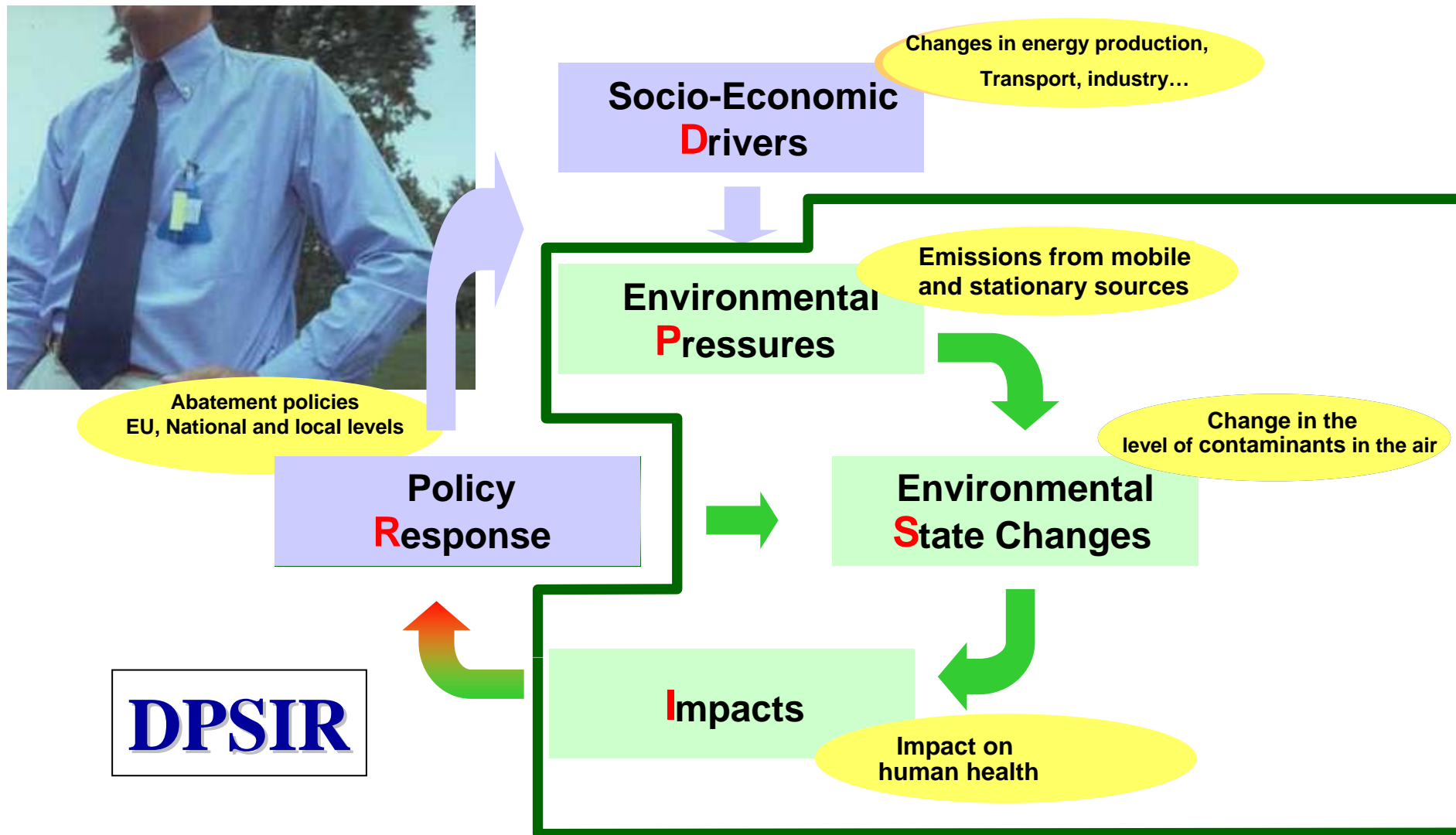
Having regard to the opinion of the European Economic and Social Committee ⁽¹⁾,

Acting in accordance with the procedure laid down in Article 251 of the Treaty ⁽²⁾,

Whereas:

(3) At the request of the European Parliament a new regulatory approach has been introduced in EU vehicle legislation. Thus, this Regulation lays down fundamental provisions on vehicle emissions, whereas the technical specifications will be laid down by implementing measures adopted following comitology procedures.

(4) In March 2001 the Commission launched the Clean Air For Europe (CAFE) programme, the major elements of which are outlined in a communication of 4 May 2005. This has led to the adoption of a thematic strategy on air pollution by a communication of 21 September 2005. One of the conclusions of the thematic strategy is that further reductions in emissions from the transport sector (air, maritime and land transport), from households and from the energy, agricultural and industrial sectors are needed



DPSIR

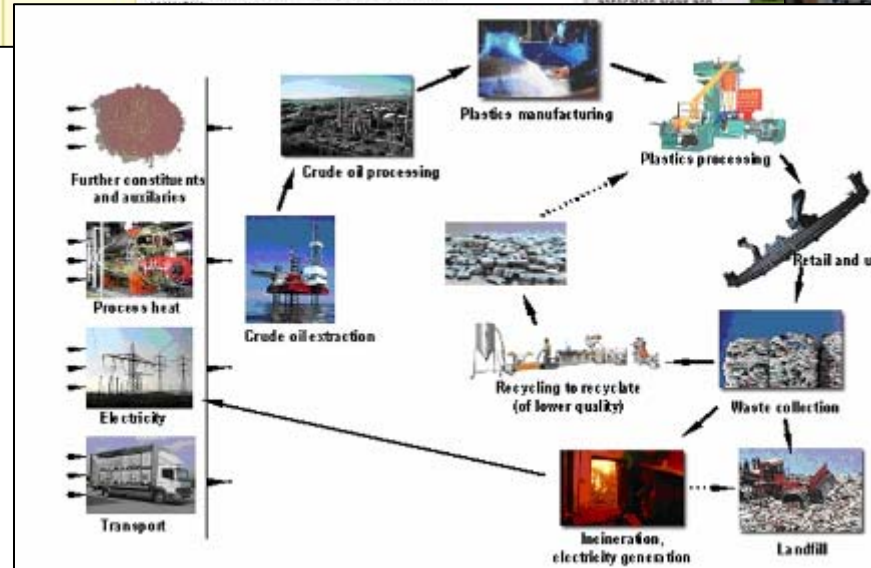
Core JRC Involvement

Environment and Prosperity

INSPIRE

*Sustainable
Transport*

*Life Cycle
Assessment*



Environment and Solidarity

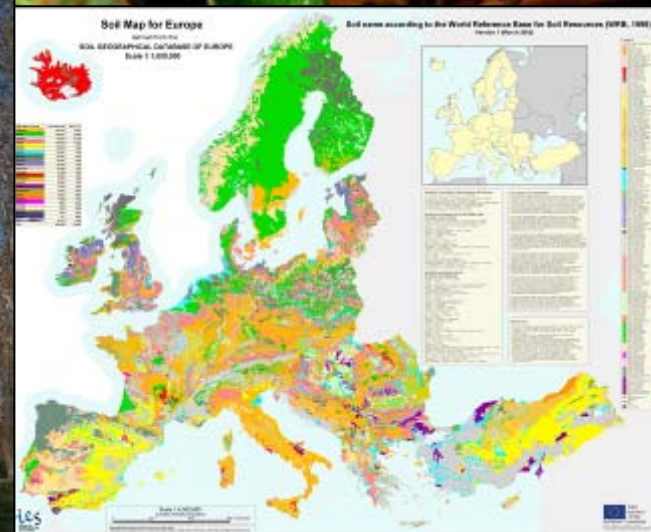
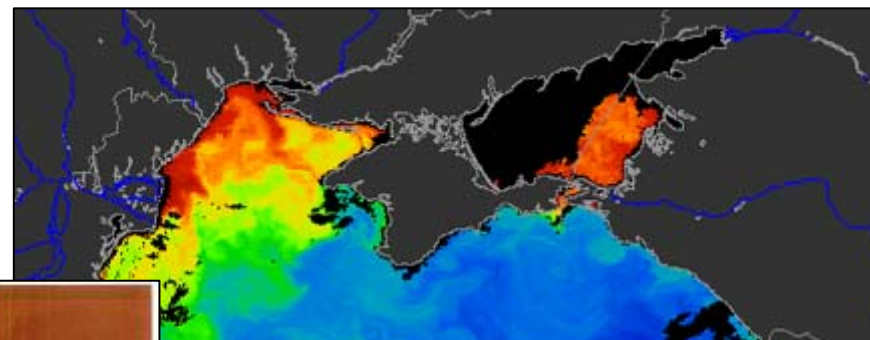
Marine Environment

Water Quality

Agri-environment

*Soil and Forest
Data Centres*

*Greenhouse Gas
Inventories*



Environment and Security

Environmental Pollution

Radioactivity Monitoring

Environment and Health

Floods & Droughts

Forest Fires



The Global perspective

Climate Change

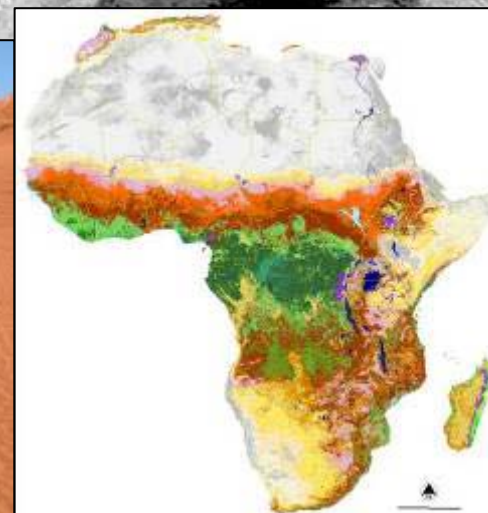
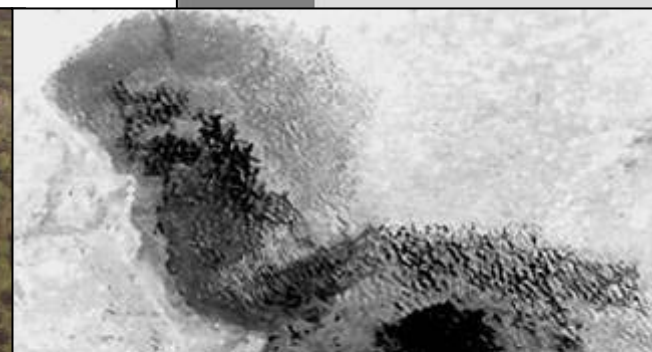
GMES

Deforestation

Desertification

Support to Africa

RESEARCH AT JRC
in support of EU
CLIMATE CHANGE
policy making



- **National Institutes**

**PEER Group (ALTERRA, CEH, CEMAGREF, NERI,
SYKE, UFZ, JRC-IES), European Soil Bureau Network,
Air Quality Reference Laboratories**

- **European Institutions**

EEA, ESA, ECMWF

- **Global Organisations**

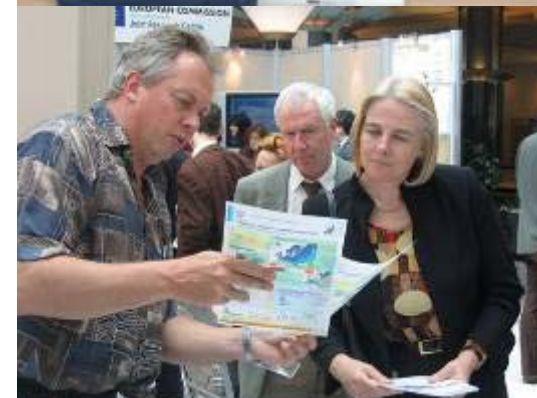
FAO, WHO, WMO, GEO, UNEP, IIASA

- Vehicle Emission Laboratories (VELA 1-7)
- European Reference Laboratory for Air Pollution (ERLAP)
- High Performance Analytical Laboratories, incl. 3 Mobile Labs
- EMEP/GAW Super Site (Climate Monitoring) at the JRC Ispra
- Greenhouse Gas Flux Measurement Towers San Rossore and Parco del Ticino
- Marine measurement stations in the Adriatic and Baltic Sea



- Technical Secretariat of INSPIRE / European Geoportal
- Water Information System for Europe (WISE)
- European Forest Fire Information System (EFFIS)
- European Flood Alert System (EFAS)
- WMO World Data Centre for Aerosols
- Radioactivity Environmental Monitoring Database (REM)
- European Soil Database
- Global Land Cover 2000 Database

- DG Environment
- DG Agriculture and Rural Development
- DG Transport and Energy
- DG External Relations,
DG Development, DG EuropeAid
- DG Regional Policy
- DG Eurostat
- DG Research
- DG Enterprise and Industry
- DG Health and Consumer Protection
- European Environment Agency
- UN Organizations (UNEP, WMO, FAO etc.)





Thank you!



arwyn.jones@ec.europa.eu

<http://ies.jrc.ec.europa.eu>