



The Enlargement & Integration Action: Progress and Plans for the Future

Enlargement Workshop 2007, Petten
Ole P. Ostermann



EU Policy Framework

- 2 New Member States (MS, Romania, Bulgaria) joined EU on 1.1.2006. DG ELARG support to implementation of Acquis continues.
- 3 Candidate Countries (Turkey, Croatia, FYR of Macedonia). Emphasis on other Western Balkan countries potential candidates.
- Negotiations are underway for the signature of MoU or association agreements with research bodies in Serbia, Turkey, FYR of Macedonia, Montenegro, Croatia, Israel and Switzerland.
- The European Neighbourhood Policy encourages cooperation with EU bordering countries with the creation of a single financial instrument (ENPI).



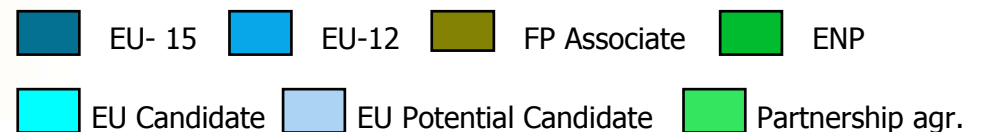
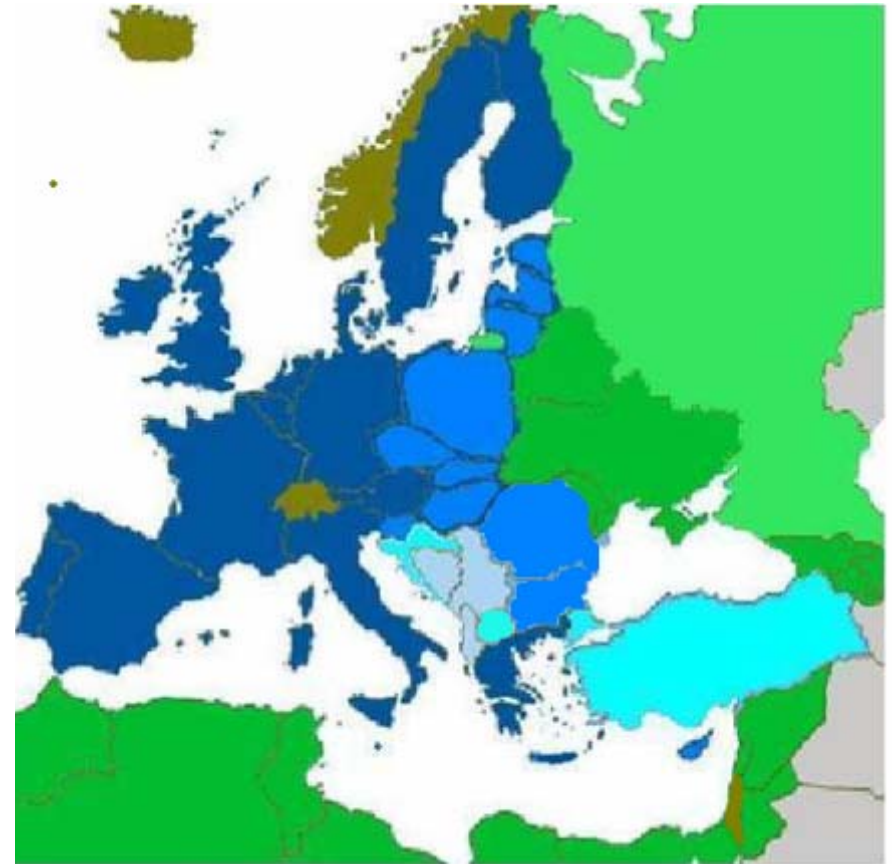
JRC support to EU Enlargement policy

Objectives:

- Assisting EU Candidate and Potential Candidate Countries in dealing faster with S&T bases of “EU acquis”
- Integration of S&T organisations and researchers from new Member States (EU-12) and FP Associated Countries in relevant JRC activities
- Promote selected S&T cooperation with European Neighbourhood Partner Countries (ENP) and support their efforts towards harmonising with complex EU legislation

Instruments:

- Various integrated instrument promoting R&D collaboration, staff exchanges, workshops and training courses





JRC Enlargement and Integration Action

Five Intertwined Instruments:

1. Focus JRC core projects on specific Enlargement needs
2. Networks and Indirect Actions
3. Host experts, research fellows
4. Advanced training courses and workshops
5. Information and awareness actions



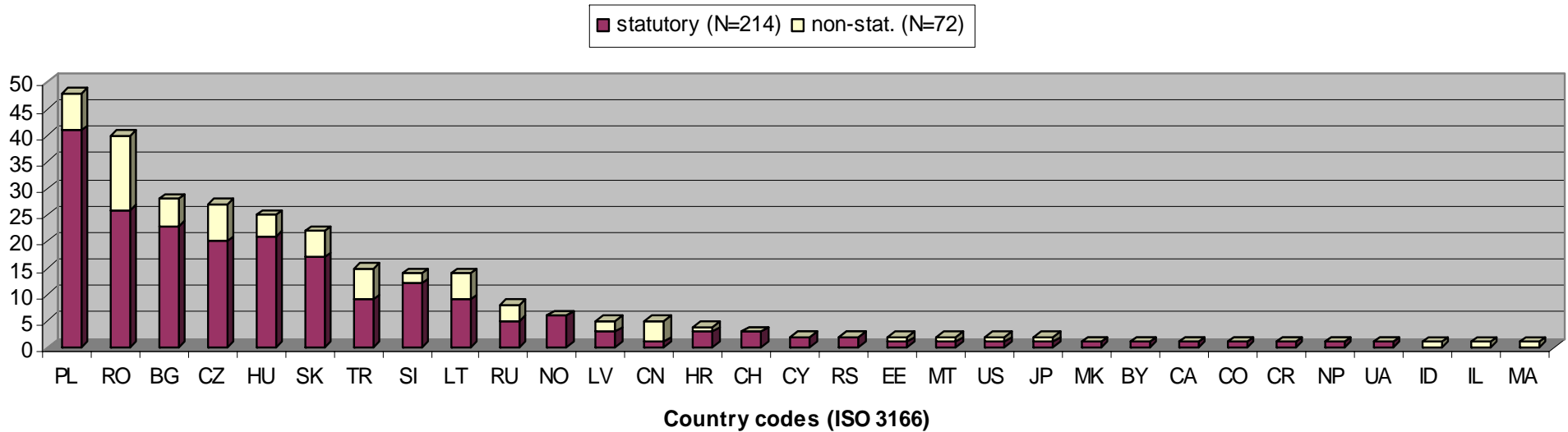
Several projects focused on specific needs of the target countries, including:

- Environment (Air Quality, Mining Waste, Water Quality, MAHB, etc.)
- Chemicals (REACH, exposure)
- Food (GMO, mycotoxins, PAHs)
- Agriculture (MARS, Sustainable Agriculture)
- Energy (Cogeneration, Renewables, Conservation)
- Metrology
- Nuclear Safety and Security
- Support to IS Policies
- Foresight



Non EU 15 staff at JRC in 2006 (data March 2007)

Non EU15 staff at JRC in March 2007



Total 286 (214 statutory + 72 non-statutory)
End 2005: total 154



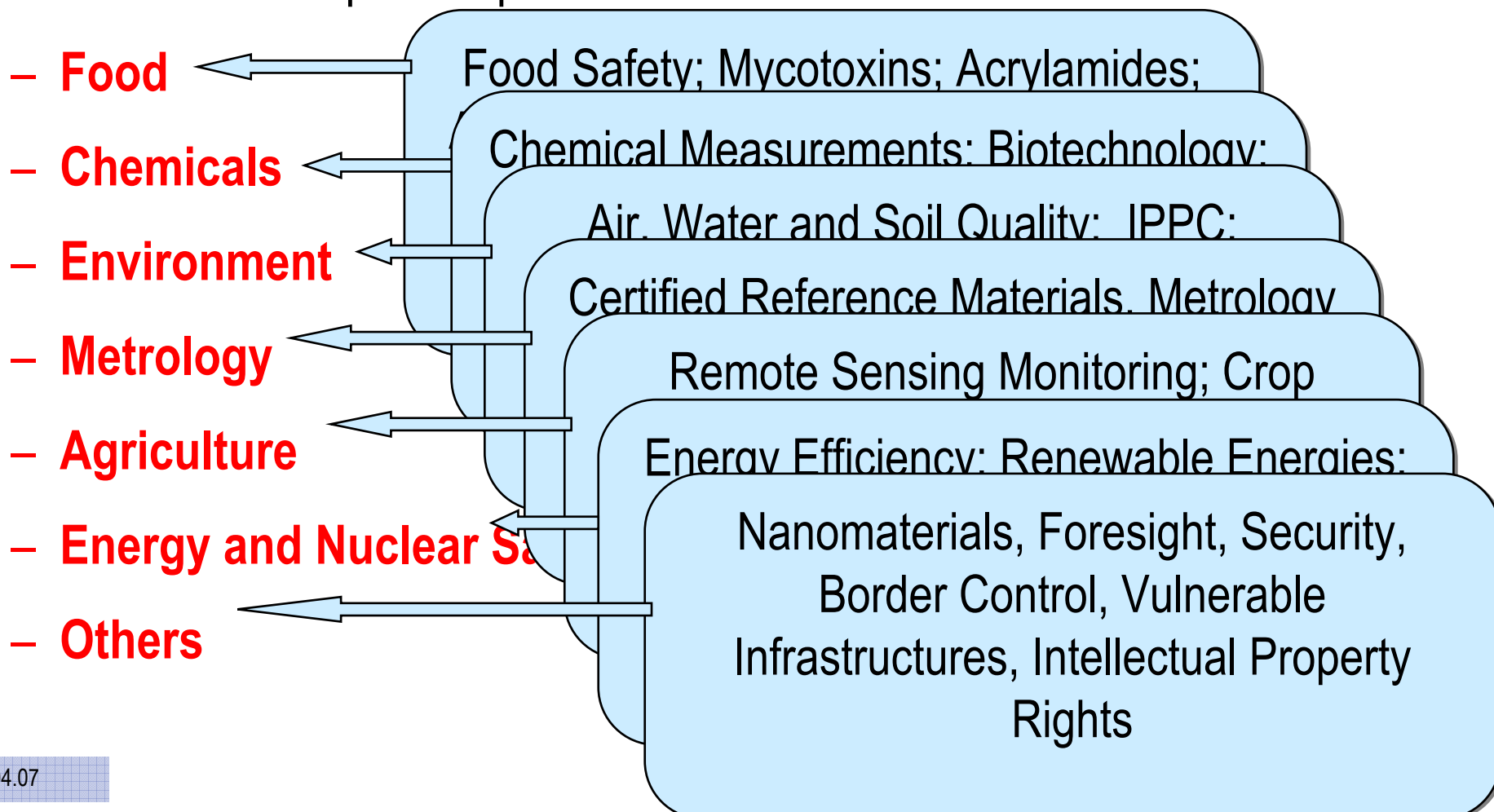
Enlargement workshops and training courses

JRC	2005	2006
Enlargement workshops and training courses	102	137
Experts total	4019	4458
Experts from Enlargement Countries	2328	2465



2. Workshops and advanced training courses

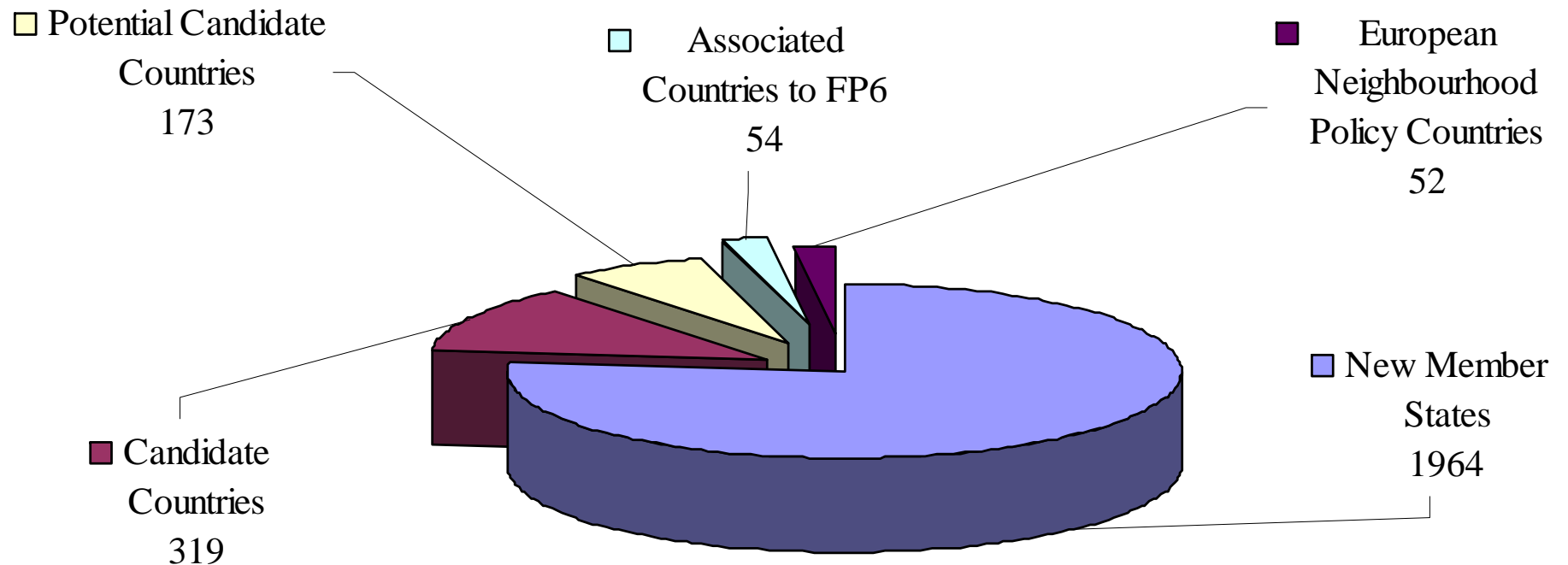
- Programme areas addressed in the scheme
- Connection to Acquis chapters





Number of experts trained in JRC workshops by group of countries

Enlargement and Integration Action 2006
Number of experts trained in JRC workshops by group of countries





Job opportunities

- JRC reserves 100 positions for SNEs from New Members States, Associated Countries and Candidate Countries
 - Extensions
 - Publications
- Open call
- Evaluation and information of candidates
- Establishment of reserve list of selected candidates
- 2007 call will be published in May, open to all MS and FP Associated Countries

www.jrc.cec.eu.int/enlargement
www.jrc.cec.eu.int/jobs

Director General

potential for further cooperation in the EU's 7th Framework Programme for Research identified

NOTICE OF VACANCY
SECONDED NATIONAL EXPERTS

Directorate general : DG-JRC
 - Directorate : Institute of Environment and Sustainability
 - Unit : HO7
 - Place : Ispra
 - Contact telephone number : 00390332785313
 - Suggested date of beginning : 1 April 2007

Main areas of responsibility :

The expert will work on the development and application of spatial analysis tools and dynamic land use models for the preparation of scenarios of evolutions of European areas. The objective of the work is to simulate current and future trends in regional (land use) development and their feed-back mechanisms with natural hazards. The main work of research focuses on the definition of scenarios, on the integration of the various data into the land use models, and on verification of model results. The work contributes to the preparation and definition of guidelines of adaptation to climate change at local and regional level through land use changes.

Main qualifications :

A University degree (or equivalent) plus relevant experience in the field of Earth Sciences, Geographical Sciences or Environmental Sciences and three years of working experience in related fields
 A PhD (or equivalent) in the field of Earth Sciences, GIS, remote sensing and/or spatial analysis will be positively considered
 Demonstrated experience in international research projects and relevant record of scientific publications
 Experience in spatial analysis techniques
 Experience in database development and management using Geographical Information Systems
 Experience in socio-economic analysis and/or modelling is considered as an asset
 Ability to work as part of a multicultural team with excellent communication skill

Languages:

Good command of English, oral and written
 Good command of at least one of the other EU languages

[New EU rules to crack down on sea pollution come into effect](#)
 29/03/2007

[Commission launches debate on further use of market-based instruments to support environment and energy related policy purposes](#)
 28/03/2007

[Environment: Commission welcomes final political agreement on LIFE+](#)
 28/03/2007

[Commission supports new freight transport services to fight road congestion and reduce environmental impact](#)
 27/03/2007

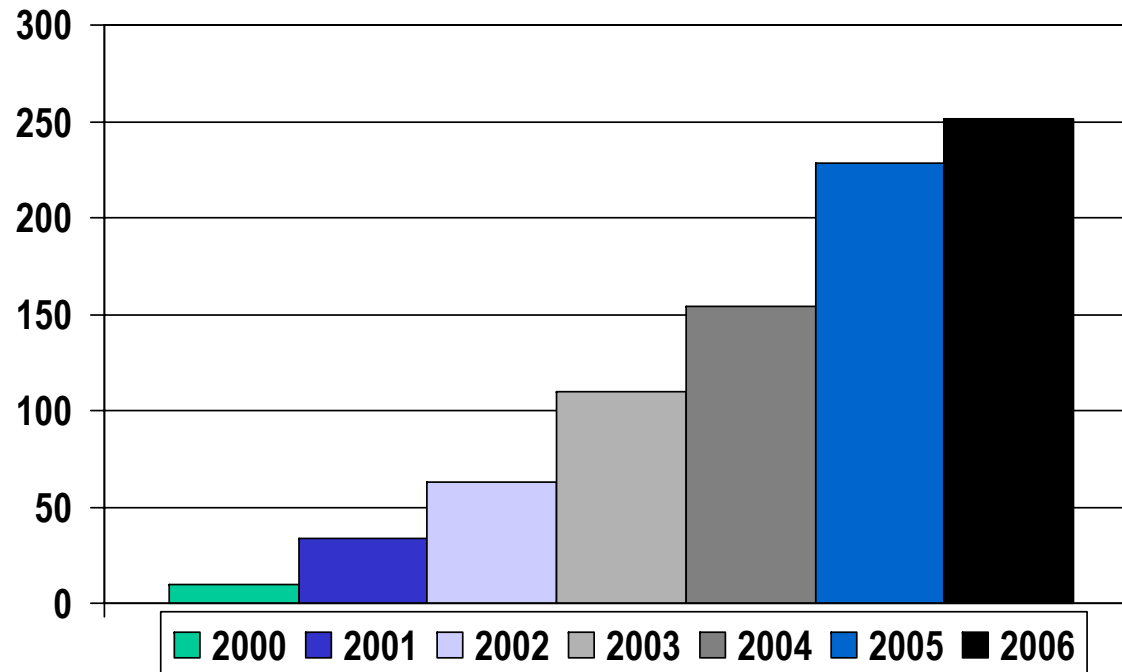
[Questions and Answers on the Regulation of GMOs in the European Union](#)
 26/03/2007

[Les 50 ans du Traité Euratom](#)





Visiting / Temporary Staff from NMS and CC working at JRC Institutes



Via Calls for Manifestation of Interest for SNE and VS and ELSA data base (CORDIS)



Round Tables in NMS in 2006

Round Table Place and date	Number of questionnaires received	Number of submitted proposals	
		Total	Within scope
Hungary 10.03.2006	37	55	53
Lithuania 16.06.2006	38	57	53
Malta 27 October 2006	8	11	11

**Presentation of Institutes, Follow-up of Round Tables:
detailed procedures, Focused events**



Information Days in CC in 2006

Place	Date	Type	Participants
Sofia, BG	28 April 2006	Information Day and S&T Workshops	242
Bucharest, RO	11 May 2006	JRC Information Day and S&T Workshops	238
Zagreb, HR	20 June 2006	JRC Information Day	214
Total for 2006			694

High level opening session, press, individual follow-up's

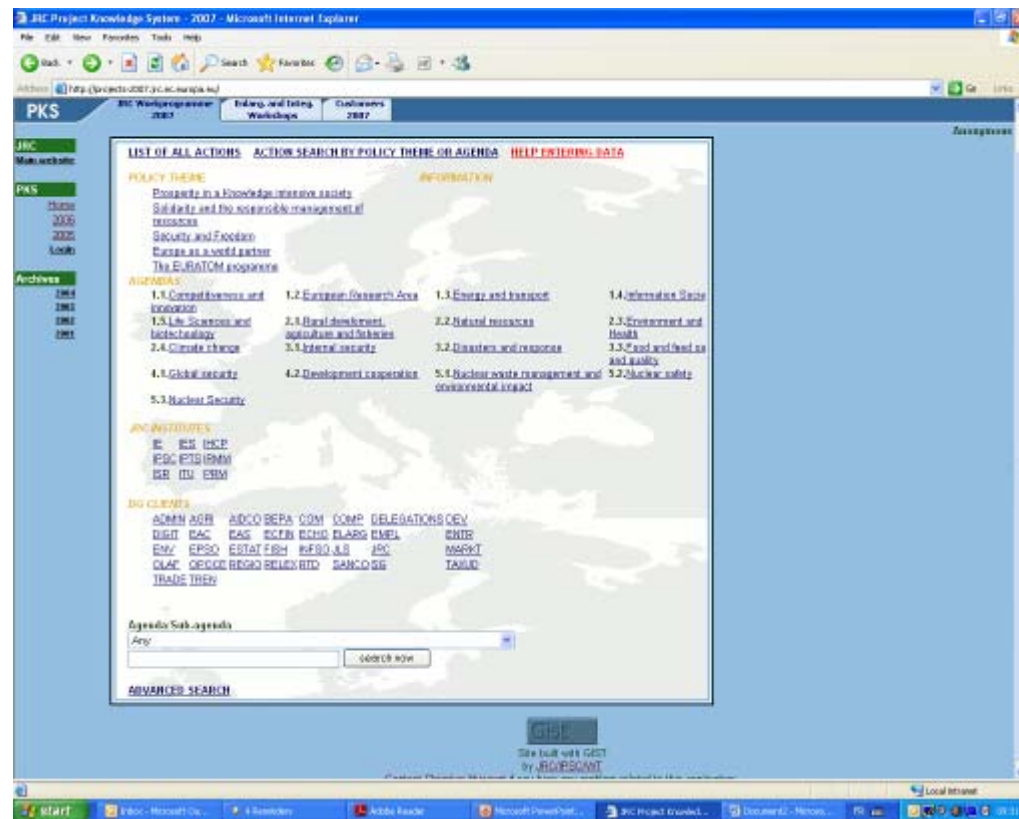


Joint proposals under FP7

How to establish a contact with JRC :

- check out project web-site with indications of areas and contact the there indicated project manager and /or :
- contact the Enlargement Contact Officer of the institute

JRC - Project Knowledge System
integrates
JRC+CORDIS
databases :



<http://projects-2007.jrc.ec.europa.eu/>



Planning of events and visits in 2007

Date	Place	Event
7-8 February 2007	JRC IRMM; Geel, BE	High-level officials and institute directors' visit to JRC institutes, 12 Turkish research directors
7-9 March 2007	JRC Ispra; IT	High-level officials and institute directors' visit to JRC institutes; 8 researchers directors
16 March 2007	Ewag Institute; Dubendorf, CH	JRC Information Day in Switzerland
22-23 March 2007	JRC IPTS, Seville, ES	High-level officials and institute directors' visit to JRC institutes; 14 Turkish research directors
19-20 April 2007	JRC IE, Petten; NL	-JRC National Contact Points Workshop 2007
26 April 2007	Skopje, MK	JRC Information Days in Potential Candidate Country FYROM
25 May 2007	Riga; LV	JRC Round Table in New Member State Latvia
12 June 2007	Belgrade; RS	JRC Information Days in Potential Candidate Country Serbia
June 2007	Tallinn; EE	JRC Round Table in New Member State Estonia



Further Information

- General information on the Seventh Framework Programme :
http://ec.europa.eu/research/fp7/index_en.cfm
- Information on research programmes and projects :
<http://www.cordis.lu>
- INCO infodesk and infopoint:
inco@cec.eu.int; http://cordis.europa.eu/inco/home_en.html
- International Scientific Cooperation Policy:
http://europa.eu.int/comm/research/iscp/index_en.html
- Information requests:
research@cec.eu.int



JRC contacts: whom to contact, where?

ECOs at the JRC institutes:

IPSC carmelo.addabbo@ec.europa.eu
IES arwyn.jones@jrc.it
IHCP nicholas.nicholson@ec.europa.eu
IPTS adriana.cristoiu@ec.europa.eu
EI roger.hurst@ec.europa.eu
IRMM doris.florian@ec.europa.eu
ITU victor.esteban-gran@ec.europa.eu

JRC, Brussels:

giancarlo.caratti@ec.europa.eu
milena.raykovska@ec.europa.eu
jana.machajova@ec.europa.eu
ole-peter.ostermann@ec.europa.eu

Gateway: <http://www.jrc.cec.eu.int/enlargement>



Thank You for Your Support !!!

www.jrc.ec.europa.eu/enlargement

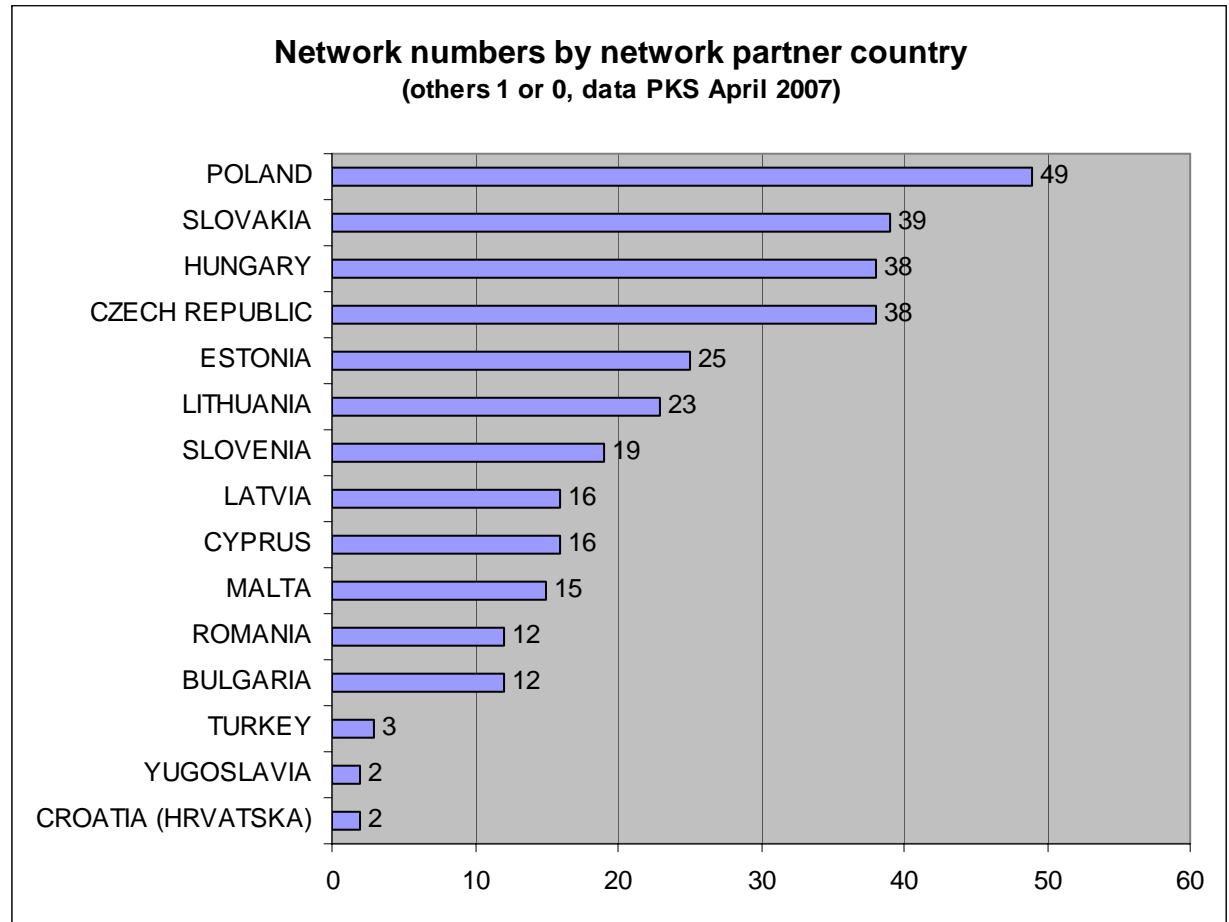




Collaborations with the JRC

The JRC is involved in 96 institutional networks accounting for 1.130 partners.

Memberships are relatively stable, although in time membership may be extended to new partners.





Indirect Actions

Since the beginning of FP 6:
some **2260 partnerships** in
around **90 indirect actions**,
but of which only 235 from
NMS and CC.

It is expected that
by the end of FP 6,
JRC institutes would
participate in some **150-250**
indirect actions.

INDIRECT ACTION PARTNER NUMBERS BY NMS/CC	FP 6 (13.1.06)	FP 6 (2007)
BULGARIA	15	
CROATIA	2	
CYPRUS	4	
CZECH REPUBLIC	49	
ESTONIA	9	
HUNGARY	38	
LATVIA	6	
LITHUANIA	7	
MALTA	2	
POLAND	49	
ROMANIA	10	
SLOVAKIA	24	
SLOVENIA	12	
TURKEY	8	
SHARE OF NMS/CC	10.4%	