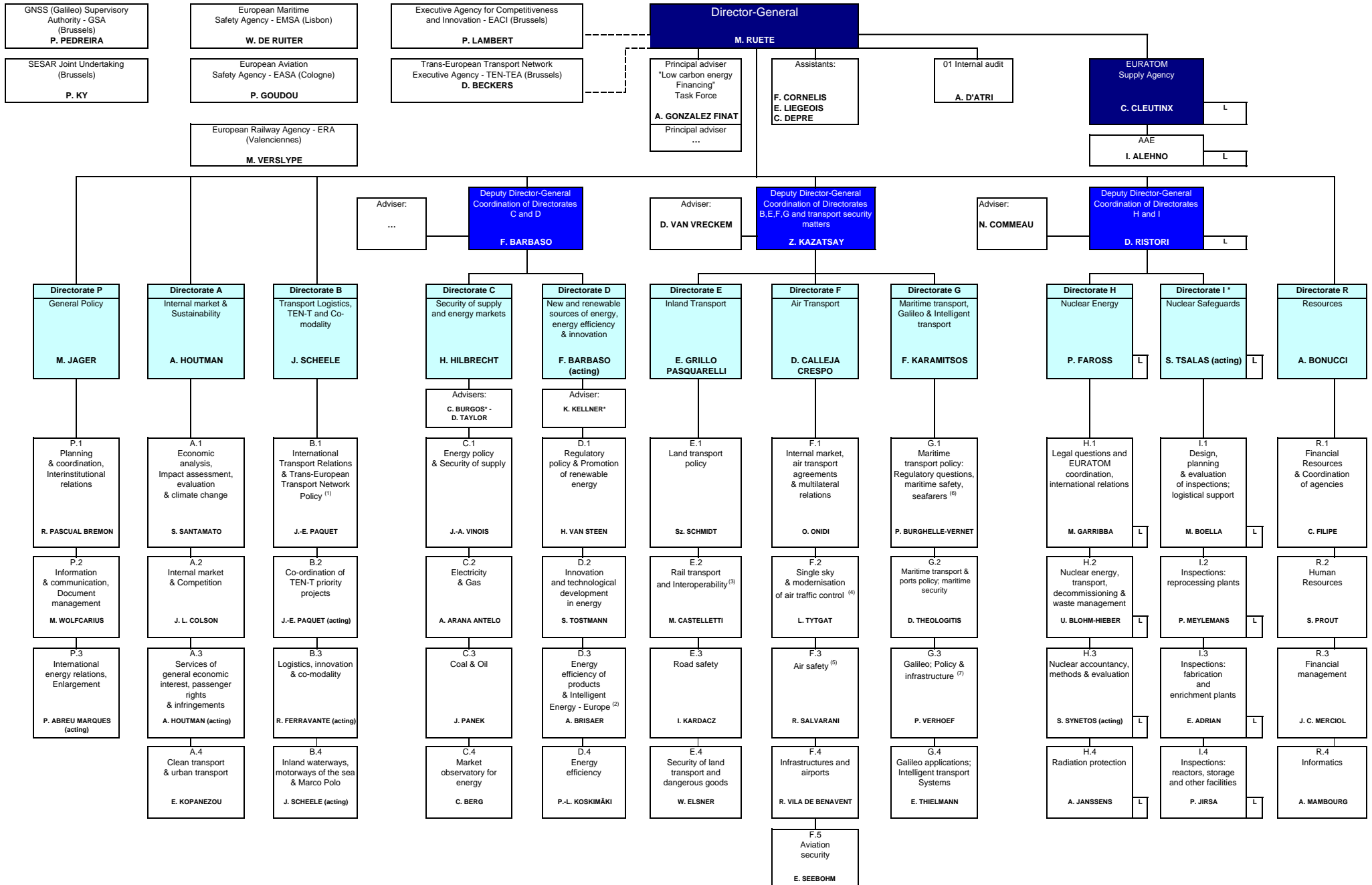


Directorate-General for Energy and Transport



(1) in charge of relations with TEN-TEA - (2) in charge of relations with EACI - (3) in charge of relations with ERA - (4) in charge of relations with the SESAR Joint Undertaking - (5) in charge of relations with EASA - (6) in charge of relations with EMSA - (7) in charge of relations with GSA
 (*) placed at the disposal of the "Task Force"

L Staff based in Luxembourg