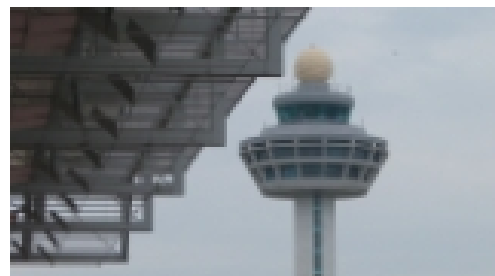


## EU: Singapore Trade Agreement 2013

Type: Stockshots [long] Référence: I080430 Durée: 45:00 Lieu: London - Lloyds Bank | Singapore | Paris | Murcia | Singapore - Port of Singapore | Beasain | Singapore - Changi Airport | Buñol | Madrid - La Paz Hospital | Madrid | Brussels | Paris - Paribas | London - Barclays Bank | Spain | Halifax | Budapest | London - HSBC | London - Swiss Re | Marseille - Port | Valencia

This stockshot presents footage of EU exports, Singapore Port and customs, European cars imports, European aircraft, European food and drinks imports and European luxury goods imports.



| HEURE                 | DESCRIPTION  | DUREE    |
|-----------------------|--|----------|
| 00:00:00              | Title  | 00:00:14 |
| 00:00:14              | Credits and title  | 00:00:06 |
| <b>1.1.EU Exports</b> |  |          |
| 00:00:20              | Title  | 00:00:05 |
| 00:00:25              | General views of a cargo leaving the Port of Marseille, France (2 shots) | 00:00:10 |
| 00:00:35              | Containers going on the cargo  | 00:00:05 |
| 00:00:40              | "Port autonome de Marseille" plate                                       | 00:00:05 |
| 00:00:45              | "Terminal de Méditerranée" plate   | 00:00:05 |
| 00:00:50              | General views of containers lying on the floor (3 shots)                 | 00:00:15 |
| 00:01:05              | "Marseille" plate  | 00:00:05 |
| 00:01:10              | French flag on a ship  | 00:00:05 |
| 00:01:15              | Containers going up the boat (3 shots)                                   | 00:00:14 |

|          |  |          |
|----------|--|----------|
| 00:01:29 | Worker on his cabin driving the crane (2 shots)  | 00:00:10 |
| 00:01:39 | Containers going up the ship (4 shots)   | 00:00:29 |
| 00:02:09 | General views of the cargo loaded with containers (4 shots)                                    | 00:00:20 |
| 00:02:28 | Containers on the floor (2 shots)  | 00:00:10 |
| 00:02:38 | Cargo leaving  | 00:00:05 |
| 00:02:43 | General view of the Avenue Montaigne in Paris, France, and Giorgio Armani, Italian luxury shop | 00:00:08 |
| 00:02:51 | Giorgio Armani's frontage  | 00:00:05 |
| 00:02:57 | Giorgio Armani's luxury shoes  | 00:00:05 |
| 00:03:02 | Prada, Italian luxury shop   | 00:00:05 |
| 00:03:07 | Prada's model with clothes, shoes and bags (2 shots)   | 00:00:09 |
| 00:03:15 | Louis Vuitton's frontage, French luxury shop (2 shots)   | 00:00:05 |
| 00:03:20 | Louis Vuitton's shop front with glasses, bags and clothes (4 shots)                            | 00:00:20 |
| 00:03:41 | Dior's frontage, French luxury shop  | 00:00:05 |
| 00:03:46 | Dior's clothes and bags (3 shots)  | 00:00:20 |
| 00:04:05 | Chanel front shop, French luxury shop  | 00:00:05 |
| 00:04:10 | Chanel's jewelry   | 00:00:05 |
| 00:04:15 | Versace's frontage, Italian luxury shop  | 00:00:05 |
| 00:04:20 | Versace's clothes  | 00:00:10 |

|          |  |          |
|----------|--|----------|
| 00:04:20 | Hackett's frontage, English luxury shop, in Brussels, Belgium  | 00:00:00 |
| 00:04:31 | Hackett's clothes inside the store (9 shots)   | 00:00:45 |
| 00:05:16 | Burberry's frontage  | 00:00:05 |
| 00:05:21 | Hugo Boss' frontage (2 shots)  | 00:00:10 |
| 00:05:31 | Perfumes and make-ups in a shop  | 00:00:05 |
| 00:05:36 | Perfumes and after shaves (6 shots)  | 00:00:30 |
| 00:06:06 | Various European make-ups (3 shots)  | 00:00:15 |
| 00:06:21 | Exterior view of a Belgian grocery, in Brussels, Belgium   | 00:00:05 |
| 00:06:26 | Interior views of the grocery with traditional European products wearing the Appellation d'origine contrôlée (AOC), (20 shots) | 00:01:39 |
| 00:08:05 | Exterior views of a Belgian bar (2 shots)  | 00:00:10 |
| 00:08:15 | Interior views of a Belgian bar (4 shots)  | 00:00:20 |
| 00:08:35 | Waitress serving beers (4 shots)   | 00:00:14 |
| 00:08:49 | Names of Belgian beers written on a chalkboard (2 shots)   | 00:00:10 |
| 00:08:59 | Various beers (3 shots)  | 00:00:15 |
| 00:09:14 | Belgian beers glasses  | 00:00:10 |
| 00:09:24 | Belgian beers on shelf (3 shots)   | 00:00:15 |
| 00:09:39 | Belgian beer barrel  | 00:00:05 |

|          |  |          |
|----------|--|----------|
| 00:09:44 | Exterior view of a specialised wines and spirit's shop in Budapest, Hungary  | 00:00:05 |
| 00:09:49 | Front shop with Veuve Clicquot champagne (3 shots)   | 00:00:15 |
| 00:10:04 | Interior view of the shop with wine bottles on shelf (2 shots)   | 00:00:09 |
| 00:10:14 | French wine  | 00:00:05 |
| 00:10:19 | European wines on shelf  | 00:00:09 |
| 00:10:28 | French wines (5 shots)   | 00:00:25 |
| 00:10:53 | General view of the shop   | 00:00:09 |
| 00:11:02 | Veuve Clicquot bottles (2 shots)   | 00:00:10 |
| 00:11:12 | Exterior view of the showroom Ferrari, in Budapest, Hungary  | 00:00:05 |
| 00:11:17 | 'Ferrari 458 Italia', exteriors and interiors, red model (10 shots)  | 00:00:50 |
| 00:12:08 | 'Ferrari 458 Italia', exteriors and interiors, black model (3 shots)   | 00:00:20 |
| 00:12:28 | Colors range   | 00:00:05 |
| 00:12:33 | Technical card of the car 'Ferrari 458' Italia (2 shots)   | 00:00:10 |
| 00:12:43 | Interior views of the Bentley showroom, a German owned British manufacturer of luxury automobiles (7 shots)                            | 00:00:35 |
| 00:13:18 | Interior views of the Lamborghini showroom, Italian manufacturer of luxury sportscars which is owned by the Volkswagen Group (6 shots) | 00:00:30 |

|          |   |          |
|----------|---|----------|
| 00:13:48 | Agriculture Fair for Agriculture Machinery, "Feria Agrícola del Mediterráneo" in Murcia, Spain  | 00:00:05 |
| 00:13:54 | Feria Agrícola del Mediterráneo banner  | 00:00:05 |
| 00:13:59 | General views of the fair (3 shots)   | 00:00:22 |
| 00:14:21 | JCB tractor loader backhoe, English brand   | 00:00:05 |
| 00:14:26 | Tractor, Italian brand (4 shots)  | 00:00:20 |
| 00:14:46 | Rotavator, grower and repairer of soils (5 shots)   | 00:00:29 |
| 00:15:15 | Tractor, English brand  | 00:00:05 |
| 00:15:20 | Cultivator, English Brand (2 shots)   | 00:00:10 |
| 00:15:30 | Duplex atomizer tornado (2 shots)   | 00:00:10 |
| 00:15:40 | Agriculture machinery (2 shots)   | 00:00:10 |
| 00:15:50 | Exterior views of La Paz Hospital in Madrid, Spain (2 shots)  | 00:00:10 |
| 00:16:00 | Hall of La Paz Hospital   | 00:00:05 |
| 00:16:05 | Surgery room of the infant cardiology service with cardiac catheterisation machine, German brand (15 shots)   | 00:01:14 |
| 00:17:19 | Radiology service with X-ray computed tomography machine, German brand. This is a medical imaging procedure that uses computer-processed X-rays to produce tomographic images or 'slices' of specific areas of the body. These cross-sectional images | 00:00:40 |

|          |  |          |
|----------|--|----------|
|          | cross-sectional images are used for diagnostic and therapeutic purposes in various medical disciplines (8 shots)   |          |
| 00:18:00 | Woman being analysed with German material in the mammography service (6 shots)   | 00:00:30 |
| 00:18:30 | Exterior view of a Pharmacy in Valencia, Spain   | 00:00:05 |
| 00:18:35 | Woman entering the pharmacy and looking at products (5 shots)  | 00:00:25 |
| 00:19:00 | Chemist taking a medicine on the shelf (2 shots)   | 00:00:08 |
| 00:19:08 | Generic medicines (4 shots)  | 00:00:23 |
| 00:19:32 | Chemist giving the medicine to her client and explaining that it is a generic one (4 shots)  | 00:00:30 |
| 00:20:01 | Medicines over the counter   | 00:00:05 |
| 00:20:06 | Five labels with the origins of the products (6 shots)   | 00:00:30 |
| 00:20:37 | General view of the pharmacy with chemist and clients (2 shots)  | 00:00:10 |
| 00:20:47 | General views of Fertiberia company, the leading chemical manufacturer in the Spanish fertilizer industry and one of the leading fertilizers producers in the European Union (6 shots) | 00:00:36 |
| 00:21:23 | Engineers controlling pressure (3 shots)   | 00:00:15 |

|          |  |          |
|----------|--|----------|
| 00:21:38 | Production process of chemical fertilizer made of ammonium nitrate (9 shots)   | 00:00:43 |
| 00:22:21 | Fertilizer prepared to be exported (9 shots)   | 00:00:49 |
| 00:23:10 | Woman entering a shop and choosing various European fertilizers (5 shots)  | 00:00:25 |
| 00:23:36 | Exterior view of the Construcciones y Auxiliar de Ferrocarriles (CAF) building, a railway construction company based in Beasain, Spain | 00:00:05 |
| 00:23:41 | Engineers working on designing (4 shots)   | 00:00:18 |
| 00:23:59 | Construction process of trams and metros (22 shots)  | 00:01:59 |
| 00:25:58 | Trams running on streets in Spain (2 shots)  | 00:00:13 |
| 00:26:11 | Trams running on streets in Belgium (3 shots)  | 00:00:22 |
| 00:26:33 | General view of the financial area of London, UK   | 00:00:05 |
| 00:26:38 | Barclay's, British bank, headquartered in London (2 shots)   | 00:00:10 |
| 00:26:48 | General views of the city-bankers walking (5 shots)  | 00:00:25 |
| 00:27:13 | 30 St Mary Axe building  | 00:00:07 |
| 00:27:20 | Exterior views of London Metal Exchange building (3 shots)   | 00:00:15 |
| 00:27:35 | Exterior views of Lloyds TSB, a British insurance and reinsurance market (4 shots)   | 00:00:20 |

|          |   |          |
|----------|---|----------|
| 00:27:55 | Exterior views of Barclay's (2 shots)   | 00:00:10 |
| 00:28:05 | Exterior views of HSBC, a British multinational banking and financial services organisation, headquartered in London (2 shots)  | 00:00:10 |
| 00:28:15 | Exterior views of Aviva, British multinational insurance company headquartered in London (3 shots)  | 00:00:15 |
| 00:28:30 | Exterior views of Halifax, a banking chain in UK and a division of Bank of Scotland, itself a wholly owned subsidiary of Lloyds Banking Group (3 shots)   | 00:00:14 |
| 00:28:44 | Exterior views of PricewaterhouseCoopers, trading as PwC, a multinational professional services firm, headquartered in London. It is the world's largest professional services firm and the largest of the "Big Four" accountancy firms measured by 2012 revenues (3 shots) | 00:00:14 |
| 00:28:58 | Exterior views of Caisse d'Epargne, a French semicooperative banking group, in Paris (4 shots)  | 00:00:23 |
| 00:29:21 | Exterior views of BNP Paribas, one of the world's largest global banking groups, headquartered in Paris (2 shots)   | 00:00:10 |
| 00:29:31 | General views of Electrabel's power station in Drogenbos, Belgium (11 shots)  | 00:00:58 |



|                             |   |          |
|-----------------------------|---|----------|
| 00:30:29                    | General views of Eon's power station in Spain (7 shots)   | 00:00:35 |
| 00:31:05                    | Electric wires (5 shots)  | 00:00:22 |
| 00:31:26                    | General views of the wind turbines of ACILOE in the Park de la Sierra Cabrera, in Buñol, Spain (15 shots) | 00:01:13 |
| <b>2.Singapore Port</b>     |   |          |
| 00:32:39                    | Title   | 00:00:05 |
| 00:32:44                    | General views of the Singapore Port (3 shots)   | 00:00:13 |
| 00:32:57                    | General views of the containers' terminal (2 shots)   | 00:00:09 |
| 00:33:06                    | "Hamburg Sud" container on truck (2 shots)  | 00:00:11 |
| 00:33:18                    | Container trucks leaving the terminal   | 00:00:06 |
| 00:33:24                    | Containers and cranes (5 shots)   | 00:00:25 |
| 00:33:48                    | General view of the port with cranes docked ships (2 shots)   | 00:00:11 |
| 00:33:59                    | Container moving on crane   | 00:00:07 |
| 00:34:06                    | General views of the port with cranes docked ships (5 shots)  | 00:00:26 |
| 00:34:33                    | General view of the containers' terminal  | 00:00:11 |
| <b>3.Public Procurement</b> |   |          |
| 00:34:43                    | Title   | 00:00:05 |
| 00:34:48                    | Sign of a metro station construction site   | 00:00:04 |
| 00:34:53                    | General views of a building under construction (2 shots)  | 00:00:11 |

|                               |  |          |
|-------------------------------|--|----------|
| 00:35:04                      | Worker welding   | 00:00:05 |
| 00:35:08                      | Sign by the Land Transport Authority                       | 00:00:05 |
| 00:35:14                      | Workers on construction site                               | 00:00:05 |
| 00:35:19                      | General view of a construction site                        | 00:00:05 |
| 00:35:24                      | Sign on a crane  | 00:00:05 |
| 00:35:29                      | Pit on construction site                                   | 00:00:05 |
| 00:35:34                      | Metro train passing (2 shots)                              | 00:00:11 |
| 00:35:46                      | City buses in traffic (4 shots)                            | 00:00:22 |
| 00:36:07                      | Volvo city bus   | 00:00:04 |
| 00:36:11                      | City bus   | 00:00:04 |
| 00:36:15                      | Mercedes city bus (2 shots)                                | 00:00:15 |
| 00:36:31                      | City bus taking passengers (2 shots)                       | 00:00:12 |
| <b>4.European Car Imports</b> |  |          |
| 00:36:43                      | Title  | 00:00:05 |
| 00:36:48                      | European cars waiting at traffic lights (2 shots)          | 00:00:06 |
| 00:36:54                      | Traffic in Singapore                                       | 00:00:06 |
| 00:37:00                      | European cars waiting at traffic lights                    | 00:00:05 |
| 00:37:04                      | Exterior view of the Rolls-Royce dealer building (2 shots) | 00:00:09 |
| 00:37:13                      | Rolls-Royce car in traffic                                 | 00:00:05 |
| 00:37:18                      | Exterior view of the Mini dealer building (3 shots)        | 00:00:14 |
| 00:37:32                      | Mini car in traffic  | 00:00:06 |
| 00:37:38                      | Exterior views of the Mercedes dealer building (2 shots)   | 00:00:12 |

|                             |  |          |
|-----------------------------|--|----------|
| 00:37:51                    | Mercedes car in traffic  | 00:00:05 |
| 00:37:56                    | Exterior view of the Porsche dealer building (2 shots)           | 00:00:12 |
| 00:38:08                    | Exterior view of the Audi dealer building (2 shots)              | 00:00:10 |
| 00:38:18                    | Audi car in traffic (2 shots)                                    | 00:00:11 |
| 00:38:29                    | Exterior view of the BMW dealer building (2 shots)               | 00:00:11 |
| 00:38:40                    | BMW car in traffic   | 00:00:05 |
| 00:38:45                    | Exterior view of the Volkswagen shop building (2 shots)          | 00:00:13 |
| <b>5. European Aircraft</b> |  |          |
| 00:38:58                    | Title  | 00:00:05 |
| 00:39:03                    | Exterior view of the departure area at Changi Airport, Singapore | 00:00:05 |
| 00:39:08                    | Control tower  | 00:00:06 |
| 00:39:14                    | Singapore Airlines Airbus A380 landing (2 shots)                 | 00:00:16 |
| 00:39:29                    | Interior view of the departure terminal                          | 00:00:08 |
| 00:39:37                    | Departure terminal with Dior commercial on a screen              | 00:00:07 |
| 00:39:44                    | Departure terminal with JCDecaux screen (2 shots)                | 00:00:13 |
| 00:39:57                    | Departure terminal with Chanel commercial on a screen (2 shots)  | 00:00:11 |
| 00:40:08                    | Tiger Airlines Airbus on runway (2 shots)                        | 00:00:09 |
| 00:40:18                    | Plane taking off   | 00:00:11 |
| 00:40:29                    | Singapore Airline Airbus on runway                               | 00:00:06 |

|   |   |          |
|---|---|----------|
| 00:40:34                                  | Silkair Airbus A320 docked (2 shots)          | 00:00:11 |
| 00:40:45                                  | Cebu Pacific Airbus on runway                 | 00:00:05 |
| 00:40:50                                  | Air Asia Airbus docked (2 shots)              | 00:00:11 |
| 00:41:01                                  | Valuair Airbus on runway (2 shots)            | 00:00:10 |
| <b>6. European Food and Drink Imports</b> |   |          |
| 00:41:11                                  | Title   | 00:00:05 |
| 00:41:16                                  | Exterior view of a French grocery (3 shots)   | 00:00:17 |
| 00:41:33                                  | Interior view of the shop (2 shots)           | 00:00:10 |
| 00:41:43                                  | French oil and vinegar bottles (2 shots)      | 00:00:10 |
| 00:41:53                                  | French seasoning                              | 00:00:10 |
| 00:42:03                                  | Asiatic women working in the shop (2 shots)   | 00:00:10 |
| 00:42:13                                  | Foie gras AOC                                 | 00:00:04 |
| 00:42:17                                  | Armagnac bottle                               | 00:00:04 |
| 00:42:21                                  | Various French products (2 shots)             | 00:00:10 |
| 00:42:31                                  | Italian coffee                                | 00:00:05 |
| 00:42:36                                  | French wines, cognac and champagne (10 shots) | 00:00:47 |
| 00:43:23                                  | Copyright                                     | 00:00:07 |
| 00:43:30                                  | END   | 00:00:00 |