

# Efficient monitoring and evaluation of the current RD programmes

Seminar 'Good management of RD  
programmes 2007-2013'  
28-29 September 2010  
Rob Peters, Head of Unit AGRI-G3



European Commission  
Agriculture and  
Rural Development

# Outline

- Why monitor
- Experience so far
- Some results
- Next steps



# Role of the CMEF

## STRATEGY

- Community Strategic Guidelines
- National Strategy Plan
- Rural Development Programme

*Objectives/targets*  
*Baseline indicators*

## REPORTING

- Commission summary report
- National summary report
- Annual progress report

*In/output indicators*  
*Result indicators*  
*Impact indicators*

CMEF



European Commission  
Agriculture and  
Rural Development

# Learning by doing

- First edition of APRs 2007
- Identification of most common issues and problems
- Clarification of certain indicators and tables (GVA, HNV)
- Updating of baselines, completion of targets
- Involvement of EN RD and EEN in screening and exchanging experience



# State of Play 2009 APRs

Reports: 67%

Tables: 63%

Final opinion given

18

Returned to MS

62

At COM level

12

**TOTAL**

**92**

Validated

25

Returned to MS

55

At COM level

8

**TOTAL**

**88**



European Commission  
Agriculture and  
Rural Development



# Main issues 2009 APRs

- Reports: insufficient analysis of (lack of) progress against targets using the monitoring data
- Tables:
  - Encoding errors
  - Missing values, wrong units
  - Inconsistencies between general and individual measure tables



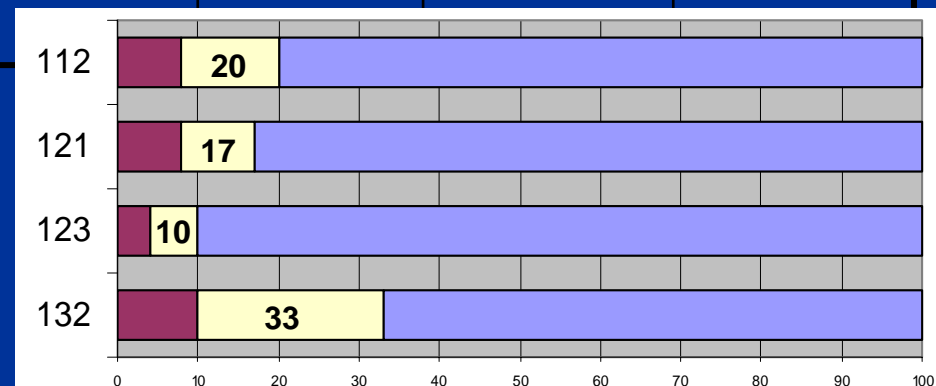
# Progress in implementation

## Axis 1: Monitoring indicators

Output indicator	2007-2008	2007-2009*	Target 2007-2013
Number of assisted young farmers (112)	18,400	37,659	189,000
<b>Number of modernisation projects on farms (121)</b>	46,780	105,800	615,000
Number of supported enterprises for adding value projects (123)	2,650	7,060	69,700
Number of farms participating in quality schemes (132)	37,700	128,750	393,000

\* provisional

%



European Commission  
Agriculture and  
Rural Development

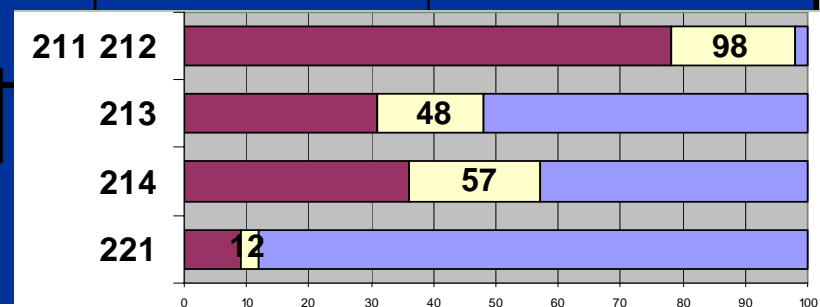
# Progress in implementation

## Axis 2: Monitoring indicators

Output indicator	2007-2008	2007-2009*	Target 2007-2013
Less Favoured areas (ha) (211 212)	42,900,000	54,000,000	55,000,000
Number of hectares supported by the NATURA 2000 measure (213)	346,288	536,500	1,110,00
Number of hectares under agri-environment committed since 2007 (214)	18,150,000	28,640,000	50,400,000
Number of hectares of afforested agricultural land since 2007 (221)	56,000	72,500	608,000

\* provisional

%



European Commission  
Agriculture and  
Rural Development

# Progress in implementation

## Axis 3 and 4: Monitoring indicators

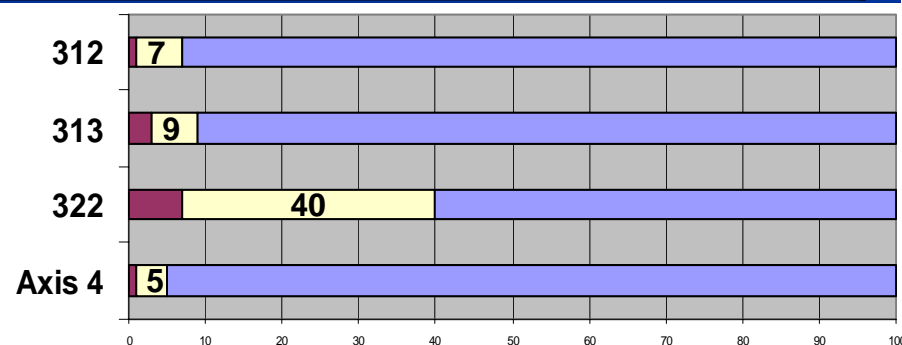
Output indicator	2007-2008	2007-2009*	Target 2007-2013
Number of micro-enterprises supported/created (312)	1,050	6,100	94,875
Number of new tourist actions (313)	1,510	3,700	44,000
Number of village renewals (322)	2,240	12,800	32,400
Number of projects financed by LAG (Axis 4)	1,280	8,760	170,000

\* provisional

%



European Commission  
Agriculture and  
Rural Development



# Next steps

- With 3 years of implementation strategic monitoring kicks in
- October 2010 MS strategic summary reports: assessment of NSPs
- Early 2011 Commission strategic summary report: assessment of progress in delivery of EU strategic objectives

