

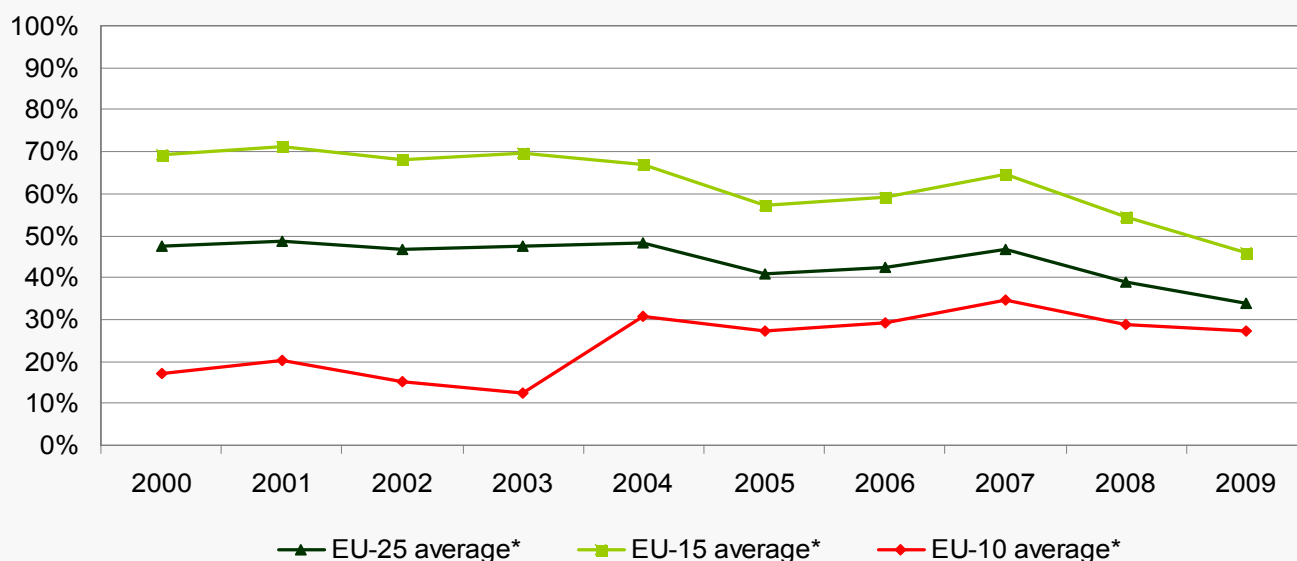
CAP post-2013: key graphs and figures

Graph 3

December 2010



Evolution of agricultural income as a share of average income in the economy



This graph shows the evolution of the agricultural income as a share of average income in the total economy¹.

Despite the limited information available, some conclusions could be highlighted:

- The level of agricultural income is generally lower than the level of income in the total economy.
- In the old Member States, the share of agricultural income in total economy income is either stable or declining.
- On the contrary, in the new Member States, there is a trend towards an increase in the share of agricultural income in the total economy income, but from a point of departure much slower than in the old Member States.
- The entrepreneurial agricultural income/AWU has been rather volatile in the EU-15 since 2000, whereas it has more than doubled in the EU-10 in the same period.
- At the same time, salary/AWU in the total economy has also grown stronger in the EU-10 than in the EU-15.

¹ Agricultural income = agricultural entrepreneurial income/AWU, average income in the total economy = wages and salaries/AWU, AWU = annual working units. Due to conceptual differences between the measurement of farmers's income from agricultural activities and average wages in the economy and the lack of reliable data on full-time equivalent statistics for the total economy for some Member States, only some countries have been considered to calculate the averages (EU-15*: EL, ES, FR, IT, NL, AT, PT; EU-10*: CZ, EE, HU, PL, SK; EU-25* = EU-15* + EU-10*).

Source: European Commission, DG Agriculture and Rural Development, based on Eurostat data on national and agricultural accounts.