



# Mineral Policy of Finland

12.6.2014

Riikka Aaltonen  
Senior Adviser, Mineral Policy



TYÖ- JA ELINKEINOMINISTERIÖ  
ARBETS- OCH NÄRINGSMINISTERIET  
MINISTRY OF EMPLOYMENT AND THE ECONOMY

# Agenda

- Mining in Finland
  - Minerals policy development during recent years
  - Minerals strategy 2010
  - Implementation
  - Action plan 2013
- 
- Mining Act 2011
  - Exploration and extraction permit



# Mining industry in Finland

## METALLIMALMIKAIIVOKSET 2013

### Fanerotsooisia kiviä



### Mesoproterotsooisia kiviä



Diabaasi



Hiekkakivi ja lietekivi



Rapakivigranitti

### Paleoproterotsooisia kiviä



Intrusiivisiä kiviä



Pintasentyisiä kiviä



### Arkeisia kiviä



Intrusiivisiä kiviä ja gneissejä



Pintasentyisiä kiviä

### Malminlouhinta (kt/a)



10 000

7 500

5 000

2 500

1 000

750

250

30

100

500

1 000

2 500

5 000

7 500

10 000

250

30

100

500

1 000

2 500

5 000

7 500

10 000

250

30

100

500

1 000

2 500

5 000

7 500

10 000

250

30

100

500

1 000

2 500

5 000

7 500

10 000

250

30

100

500

1 000

2 500

5 000

7 500

10 000

250

30

100

500

1 000

2 500

5 000

7 500

10 000

250

30

100

500

1 000

2 500

5 000

7 500

10 000

250

30

100

500

1 000

2 500

5 000

7 500

10 000

250

30

100

500

1 000

2 500

5 000

7 500

10 000

250

30

100

500

1 000

2 500

5 000

7 500

10 000

250

30

100

500

1 000

2 500

5 000

7 500

10 000

250

30

100

500

1 000

2 500

5 000

7 500

10 000

250

30

100

500

1 000

2 500

5 000

7 500

10 000

250

30

100

500

1 000

2 500

5 000

7 500

10 000

250

30

100

500

1 000

2 500

5 000

7 500

10 000

250

30

100

500

1 000

2 500

5 000

7 500

10 000

250

30

100

500

1 000

2 500

5 000

7 500

10 000

250

30

100

500

1 000

2 500

5 000

7 500

10 000

250

30

100

500

1 000

2 500

5 000

7 500

10 000

250

30

100

500

1 000

2 500

5 000

7 500

10 000

250

30

100

500

1 000

2 500

5 000

7 500

10 000

250

30

100

500

1 000

2 500

5 000

7 500

10 000

250

30

100

500

1 000

2 500

5 000

7 500

10 000

250

30

100

500

1 000

2 500

5 000

7 500

10 000

250

30

100

500

1 000

2 500

5 000

7 500

10 000

250

30

100

500

1 000

2 500

5 000

7 500

10 000

250

30

100

500

1 000

2 500

5 000

7 500

10 000

250

30

100

500

1 000

2 500

5 000

7 500

10 000

250

30

100

500

1 000

# Preconditions for exploration and mining

- Good geological potential over the whole country
- High quality data available
- Knowledge and skills in geology, mining, engineering
- Long tradition of mining, world class mining technology and machinery
- Good coverage of infrastructure
- Stable society with low risks
- Stable legislation and transparent administration, government support
- Local people positive towards mining industry



# Forms of government support

- Direct budget financing of infrastructure investments serving the opening of new mines
- Funding of mine investments by public financial institutes; loans and guarantees (Finnvera Plc) and capital financing (Finnish Industry Investment Ltd )
- Participation in the financing of transport infrastructure investments needed for starting of new mines (railroads, roads, harbors)
- Education and training of staff required for the mines



# Systematic measures developing sustainable mining sector

- 2010 Mineral strategy
- 2011 Mining Act
- 2011 Green Mining programme to enhance research and innovation, funded by Tekes – the Finnish Funding Agency for Innovation
- 2011 Development of mining industry included in the government programme
- 2012 In state budget allocation of 30 M€ for financing mining sector through Finnish Industry Investment Ltd
- 2013 Action plan for development of sustainable extractive industries
- 2014 ongoing implementation of the action plan



# Main targets for the Finnish mineral strategy

- To contribute to the increase of employment, economic growth and welfare through vital mineral sector
- To find solutions to global challenges of raw-material chains through Finnish innovations
- To decrease total environmental impacts of mining industry



# Government programme 2011

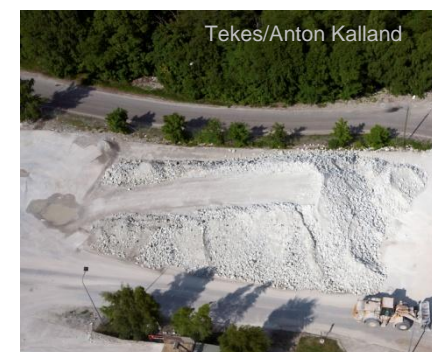
- The state will strengthen its involvement in the value chain of the domestic mining industry.
- A programme for investments in mining sector projects
- Investments in education and R&D
- Increase the processing of minerals in Finland and develop the metal industry.
- Mining sector expertise will be made a priority of the Finnish EU policy
- Co-operation between Nordic countries



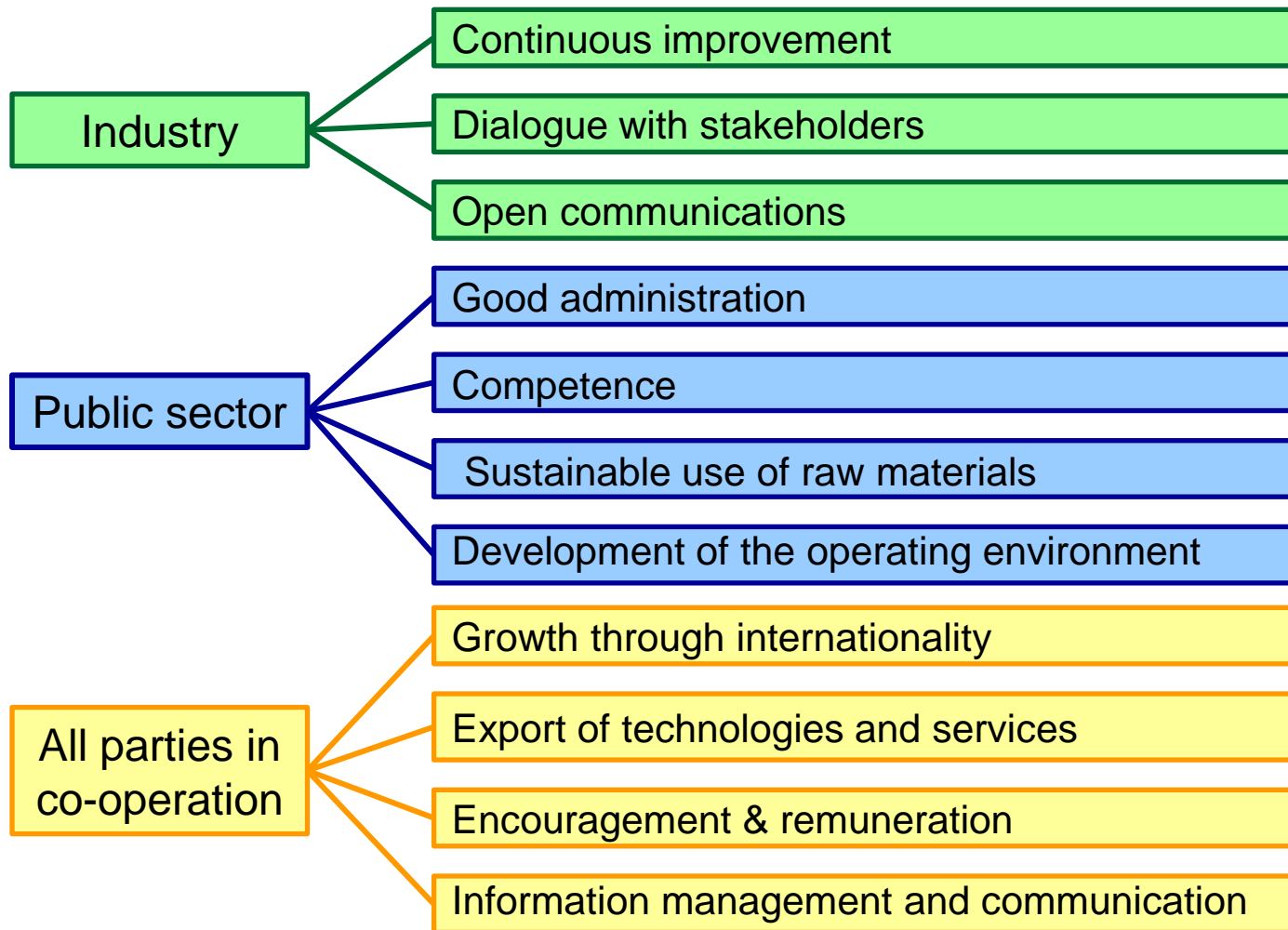


# Action plan for development of sustainable extractive industries

- Mining industry
  - Aggregates industry
  - Natural stone industry
  - Metal refining
  - Technology and service providers related to extractive industries
  - Public administration and development of the business environment
  - Development of research and training
  - Recycling and life cycle aspects
- [http://www.tem.fi/files/37130/TEMjul\\_22\\_2013\\_web\\_04072013.pdf](http://www.tem.fi/files/37130/TEMjul_22_2013_web_04072013.pdf)

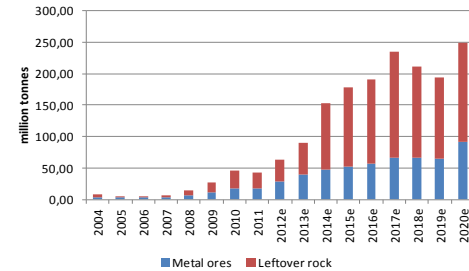


# Players and focus areas in the Finnish action plan for sustainable extractive industries



# From plan to implementation

- Proposed actions to be completed by 2019, all parties involved
- Long term objectives have been described to 2030
- Indicators to measure the general development of the sector and each activity
- Steering committee appointed for implementation and updating the action plan
- Annual Round table meetings, themes



# Mining Act 503/1965 >>> 621/2011

The aim of the renewal:

To ensure with modern legislation the preconditions for exploration and mining in a **socially**, **economically** and **ecologically** sustainable manner



# Factors

There has to be found a **balance between different interests** in the society, concerning

- good operational business environment for exploration and mining companies
- constitutional rights of various other stakeholders as well as private citizens
- rights of private land and property owners
- secure the influence of local communities
- take into account environmental protection and competing land use issues



# Mining Act 621/2011

- responsibilities of exploration and mining companies against other stakeholders are clarified
- landowners, local organisations and citizens have possibility to submit their opinions during the permitting process, before decisions
- local municipalities and environment authorities will during the process give their statements about the projects
- <http://www.finlex.fi/en/laki/kaannokset/2011/en20110621>



# Permits

The Mining Act and governmental decrees describe in details

- Contents of application
- Stakeholders
- Hearing process
  
- Hinders for permitting
- Mitigation of negative impacts by provisions
  
- Responsibilities of the mining authority
  - Supervision of the activity
  - Scheduled reviewing of the provisions
  - Management of guarantees
  - Permitting the life cycle of the mine, including closure





Thank You for Your attention!

[riikka.aaltonen@tem.fi](mailto:riikka.aaltonen@tem.fi)



TYÖ- JA ELINKEINOMINISTERIÖ  
ARBETS- OCH NÄRINGSMINISTERIET  
MINISTRY OF EMPLOYMENT AND THE ECONOMY